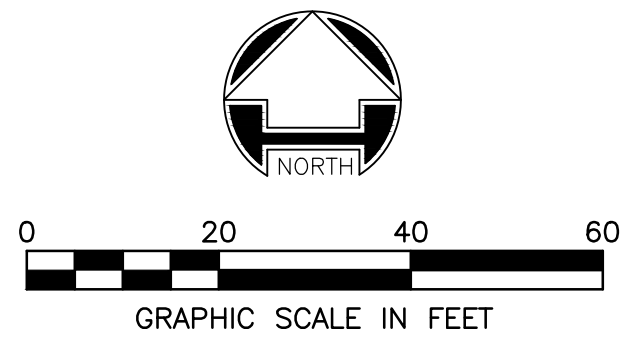
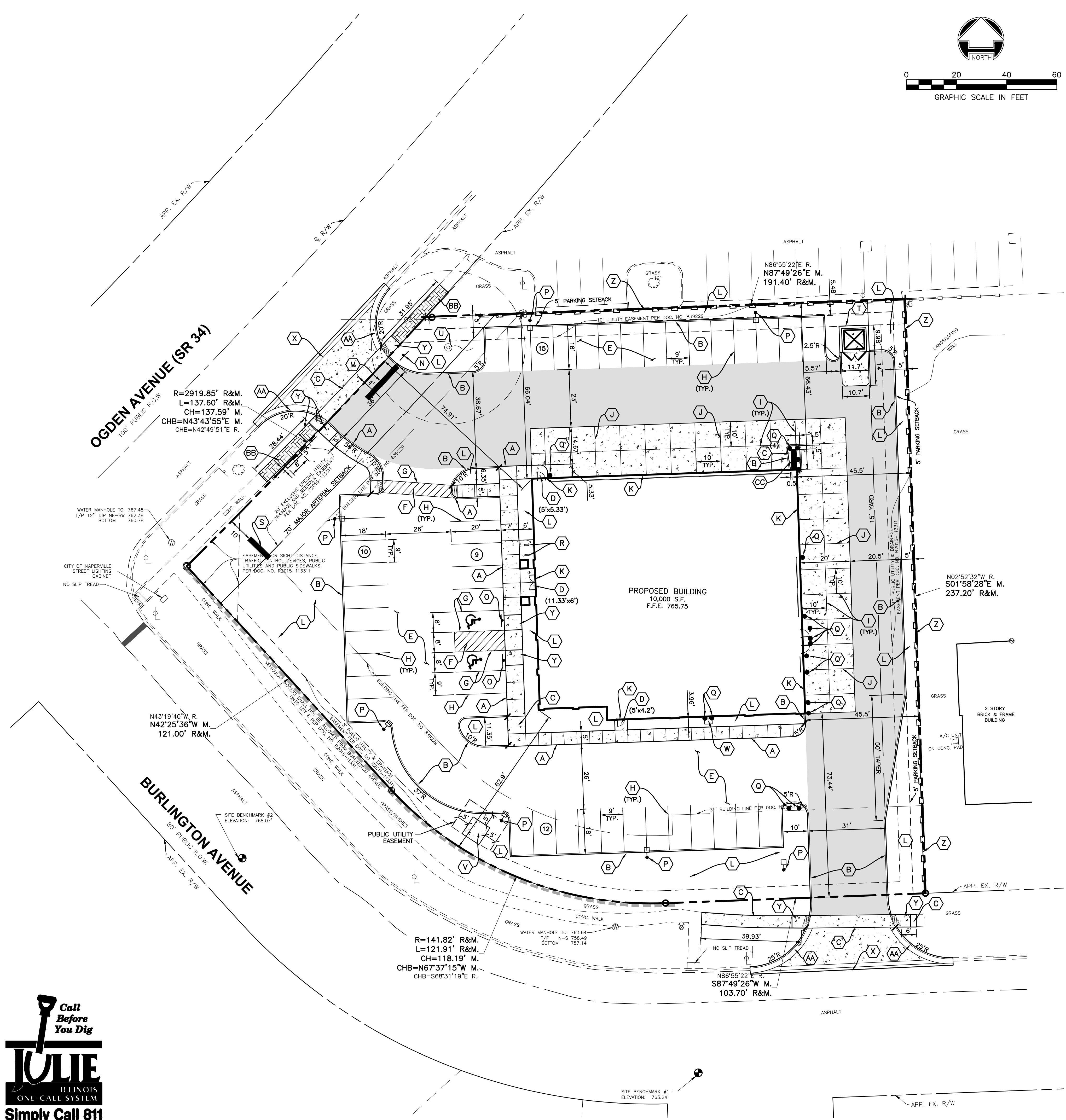


Layout Tab Name: C200_Images: CREE OSQ MEDIUM.PNG; Xrefs: 80835--p.dwg; 80835--x.dwg; 80835TLK.dwg; 80835LTG.dwg; 80835LTG.dwg; Bell Tire - Naperville.dwg
 Last Saved By: Smith, 9/22/2020 4:15:26 PM
 G:\DE\Clients\Enright_Architects\80835 - Belle Tire - Naperville\4.0 Disciplines\Civil\Cadd\Cad\8083555.dwg Plotted By: Smith, Angela Plotted: September 22, 2020, 4:21:15 PM



LEGEND

SYMBOL	DESCRIPTION	SYMBOL	DESCRIPTION
A	INTEGRAL WALK & CURB	R	BIKE RACK
B	TYPE B BARRIER CURB	S	BELLE TIRE SIGN (SEE ARCH. PLANS)
C	CONCRETE WALK	T	DUMPSTER ENCLOSURE
D	CONCRETE STOOP (5'x5' UNLESS OTHERWISE)	U	60' FLAG POLE WITH 30' X 20' FLAG
E	REGULAR DUTY ASPHALT PAVEMENT	V	TRANSFORMER PAD
F	4\" PAINTED YELLOW PAVEMENT STRIPE AT 45\" ANGLE, 2\" O.C.	W	\"FREE AIR\" STATION
G	4\" PAINTED YELLOW PAVEMENT STRIPE	X	CURB AT DRIVE ENTRANCE
H	4\" PAINTED WHITE PAVEMENT STRIPE	Y	ADA RAMP
I	CONTROL JOINT	Z	6\" HIGH SONAGUARD PERFORATED FIBERGLASS SOUND-ABSORPTIVE NOISE BARRIER SYSTEM MEETING STC 33 OR HIGHER, COLOR: DARK BRONZE, BY SOUND FIGHTER SYSTEMS (www.soundfighter.com)
J	EXPANSION JOINT	AA	B6.12 BARRIER CURB & GUTTER
K	EXPANSION JOINT AT BUILDING	BB	STAMPED CONCRETE
L	LANDSCAPED AREA	CC	20\" SOUND WALL, 8\" LONG X 14\" MIN. HIGH
M	24\" STOP BAR, WHITE		
N	STOP SIGN		
O	ADA SIGN		
P	LIGHT POLE (SEE LIGHTING PLAN)		
Q	GUARD POST		

PARKING DATA

PER ZONING ORDINANCE	
PARKING SPACES REQUIRED	45
1.5 SPACES PER 1,000 S.F. OF GROSS FLOOR AREA	
BICYCLE PARKING	3
PARKING SPACES PROVIDED	44
STANDARD PARKING SPACES	2
ADA PARKING SPACES	2
TOTAL PARKING SPACES =	46

SITE DATA

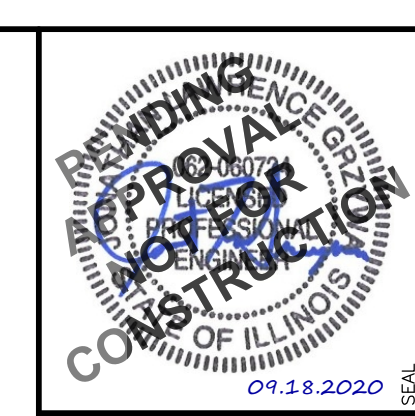
	ACREAGE	PERCENTAGE
GROSS BUILDING AREA (GFA)	10,000 SF	1.26 AC
EXISTING IMPERVIOUS AREA	1.11 AC (48,352 SF)	
PROPOSED IMPERVIOUS AREA	0.98 AC (42,605 SF)	
COVERAGE PERCENTAGE		77.6%

BID ALTERNATES

ALTERNATE BID ITEM 1: INSTALLATION OF CONCRETE PAVEMENT (PER DETAIL ON PLAN SHEET C600) SITE WIDE IN LIEU OF ASPHALT PAVEMENT.

SITE NOTES

- ALL DIMENSIONS IN CURBED AREAS SHALL BE BACK TO BACK OF CURB.
 - ALL DIMENSIONS IN AREAS WITHOUT CURB SHALL BE TO EDGE OF PAVEMENT.
 - ALL DIMENSIONS AT INTEGRAL CURB & WALK SHALL BE TO FACE OF CURB.
 - ALL DIMENSIONS FROM BUILDING SHALL BE FROM FACE OF BUILDING.
- ALL RADII IN PAVED AREAS & ON CURBS SHALL BE 3' UNLESS NOTED OTHERWISE.
- THE CONTRACTOR SHALL VERIFY ALL DIMENSIONS IN FIELD BEFORE STARTING CONSTRUCTION. THE CONTRACTOR SHALL BE RESPONSIBLE FOR ALL FIELD DIMENSIONS. IF ANY DISCREPANCIES ARE FOUND IN THESE PLANS FROM ACTUAL FIELD CONDITION, THE CONTRACTOR SHALL CONTACT A/E IMMEDIATELY.
- PROVIDE SMOOTH TRANSITION FROM NEW AREAS TO EXISTING FEATURES AS NECESSARY.
- ALL AREAS WHERE THE EXISTING PAVEMENT OR PAVEMENTS ARE DAMAGED DURING CONSTRUCTION FROM TRAFFIC BY THE GENERAL CONTRACTOR, SUBCONTRACTORS, OR SUPPLIERS SHALL BE RESURFACED OR RECONSTRUCTED AT LEAST TO THEIR ORIGINAL CONDITION AFTER CONSTRUCTION WORK IS COMPLETED.
- ALL RADII INDICATED SHALL BE FORMED AS CIRCULAR ARCS.
- ALL DIMENSIONS ARE PARALLEL AND PERPENDICULAR TO BASE LINES, PROPERTY LINES OR BUILDING LINES UNLESS OTHERWISE NOTED.
- ADA RAMP AND SIGNAGE SHALL BE IN ACCORDANCE WITH FEDERAL, STATE, COUNTY, CITY AND LOCAL CODE WHICHEVER HAS JURISDICTION. SEE SITE PLAN FOR LOCATION AND SITE DETAILS FOR SPECIFICATIONS.
- ALL STRIPES ARE TO BE 4\" PAINTED, WHITE, UNLESS OTHERWISE NOTED.
- THE CONTRACTOR SHALL BE RESPONSIBLE TO PROVIDE AT HIS EXPENSE ALL AUTOMOBILE AND PEDESTRIAN TRAFFIC CONTROL DEVICES REQUIRED BY FEDERAL, STATE, COUNTY, CITY OR LOCAL AGENCY. THE AMOUNT, LOCATION AND SIZE SHALL BE PER DIRECTION OF AGENCY.
- IT IS THE RESPONSIBILITY OF THE CONTRACTOR TO REMOVE ALL MUD, DIRT, GRAVEL AND ANY OTHER MATERIALS TRACKED ONTO ANY PUBLIC OR PRIVATE STREETS OR SIDEWALKS. THE CONTRACTOR MUST CLEAN THESE DAILY IF NECESSARY. THE CONTRACTOR MUST USE WATER OR OTHER METHODS TO KEEP AIRBORNE DUST TO A REQUIRED MINIMUM.
- DUE TO PROPOSED SITE CONDITIONS, WORK WILL BE REQUIRED WITHIN THE OGDEN AVENUE RIGHT-OF-WAY. CONTRACTOR SHALL OBTAIN A RIGHT-OF-WAY PERMIT FROM ILLINOIS DEPARTMENT OF TRANSPORTATION (IDOT) PRIOR TO STARTING CONSTRUCTION. CONTRACTOR TO FOLLOW IDOT MOT DETAIL ON SHEET C601.
- THE OWNER OR HIS/HER/THEIR REPRESENTATIVE IS RESPONSIBLE TO OBTAIN ANY AND ALL PERMITS REQUIRED BY APPLICABLE GOVERNMENTAL AGENCIES.
- ALL WORK SHALL BE PERFORMED IN ACCORDANCE WITH THE CITY OF NAPERVILLE DESIGN MANUAL AND STANDARD SPECIFICATIONS (CURRENT EDITION) AND WITH THE ILLINOIS DEPARTMENT OF TRANSPORTATION'S \"STANDARD SPECIFICATIONS FOR ROAD AND BRIDGE CONSTRUCTION\" (CURRENT EDITION).
- ALL CONTRACTORS DOING WORK IN THE PUBLIC RIGHT-OF-WAY MUST BE LICENSED (WHEN APPLICABLE) TO MAKE PUBLIC IMPROVEMENTS WITHIN THE NAPERVILLE CORPORATE LIMITS.
- THE CONTRACTOR/DEVELOPER ASSUMES ALL RESPONSIBILITY AND LIABILITY FOR ANY ACTION RESULTING FROM THEIR WORK WITHIN THE PUBLIC RIGHT-OF-WAY.
- THE CONTRACTOR/DEVELOPER SHALL INDEMNIFY AND HOLD HARMLESS THE CITY OF NAPERVILLE.
- PRIOR TO COMMENCEMENT OF ANY OFF-SITE CONSTRUCTION, THE CONTRACTOR SHALL SECURE WRITTEN AUTHORIZATION THAT ALL OFF-SITE EASEMENTS HAVE BEEN SECURED AND THAT PERMISSION HAS BEEN GRANTED TO ENTER ONTO PRIVATE PROPERTY.
- THE CONTRACTOR AND THEIR ON-SITE REPRESENTATIVES WILL BE REQUIRED TO ATTEND A PRE-CONSTRUCTION MEETING WITH THE CITY OF NAPERVILLE PRIOR TO ANY WORK BEING STARTED. A PRE-CONSTRUCTION MEETING WILL NOT BE SCHEDULED UNTIL THE PROJECT HAS BEEN APPROVED BY THE CITY OF NAPERVILLE DEVELOPMENT REVIEW TEAM AND THE REQUIRED SURETY HAS BEEN POSTED.
- A MINIMUM OF 48 HOURS NOTICE WILL BE GIVEN TO THE CITY OF NAPERVILLE TED BUSINESS GROUP (630-420-6082) PRIOR TO STARTING WORK OR RESTARTING WORK AFTER SOME ABSENCE OF WORK FOR ANY REASON.
- IT SHALL BE THE CONTRACTOR'S RESPONSIBILITY TO ADEQUATELY IDENTIFY AND LOCATE ALL EXISTING UTILITIES PRIOR TO EXCAVATION. BEFORE STARTING CONSTRUCTION, THE CONTRACTOR SHALL CONTACT JULIE FOR THE LOCATION OF ANY AND ALL UTILITIES. THE TOLL-FREE NUMBER IS 800-892-0123. IT IS THE RESPONSIBILITY OF THE CONTRACTOR TO LOCATE ANY PRIVATE FACILITIES OR NON-JULIE MEMBER FACILITIES.
- THE CONTRACTOR CAN SCHEDULE ALL NECESSARY SITE INSPECTIONS WITH THE CITY OF NAPERVILLE BY CALLING (630) 420-6082 BETWEEN THE HOURS OF 8:00AM AND 4:00PM (CLOSED 1:00PM TO 2:00PM DAILY) ON WEEKDAYS WHEN THE CITY IS OPEN FOR BUSINESS. THE CONTRACTOR WILL BE PROVIDED TO PROVIDE THE SITE PERMIT NUMBER FOR THE PROJECT IN ORDER TO SCHEDULE THE INSPECTION(S).
- RECORD DRAWINGS ARE REQUIRED TO BE SUBMITTED AND APPROVED BY THE CITY OF NAPERVILLE PRIOR TO FINAL OCCUPANCY BEING GRANTED.
- FINAL ACCEPTANCE OF PUBLIC IMPROVEMENTS SHALL BE GRANTED ONLY AFTER A FINAL INSPECTION HAS BEEN COMPLETED AND HAS REVEALED THAT ALL IMPROVEMENTS HAVE BEEN SATISFACTORILY COMPLETED IN ACCORDANCE WITH THE NAPERVILLE STANDARD SPECIFICATIONS. UTILITIES ARE NOT CONSIDERED ACCEPTED UNTIL THEY ARE FORMALLY ACCEPTED BY THE CITY COUNCIL AS REQUIRED IN ACCORDANCE WITH THE NAPERVILLE MUNICIPAL CODE.



REVISION	No.	DATE

PROJECT No: 80835
 DATE: 09/18/20
 DES. PJD
 DR. PJD
 CKD. ARS

1815 South Meyers Road
 Suite 950
 Oakbrook Terrace, IL 60181
WOOLPERT
 ARCHITECTURAL ENGINEERING (CORPORATE)

BELLE TIRE NAPERVILLE
 1126 EAST OGDEN AVENUE
 NAPERVILLE, ILLINOIS 60563

SITE PLAN

SHEET NO. **C200**