

Issue Dates:

DATE	DESCRIPTION
11.30.2023	INDIA PFA APPLICATION
12.06.2023	IFDA APPLICATION
03.26.2024	IFDA FULL APPLICATION
04.24.2024	IFDA REVISION 1
08.05.2024	IFDA REVISION 2
09.23.2024	IFDA REVISION 3

Project No. 21-NAPE-00-01

Plot Date: 04.24.2024

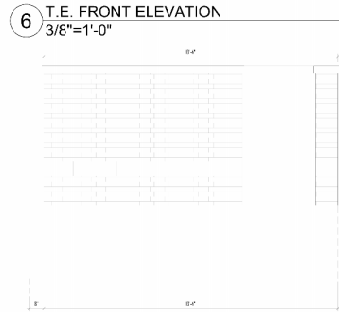
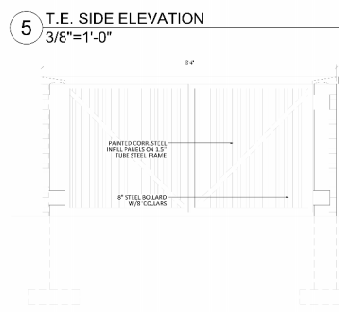
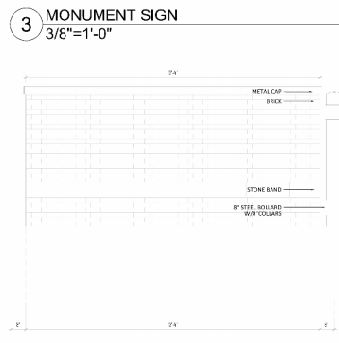
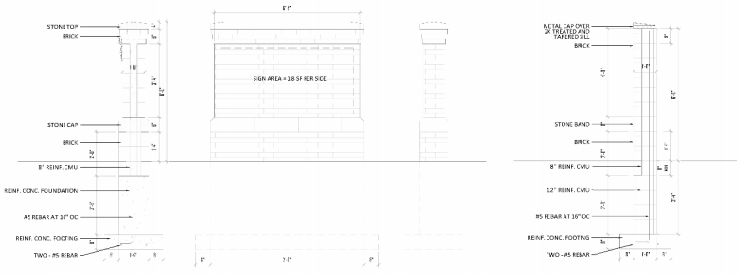
Drawn by: PDO

Checked by: PDO

Approved by: PDO

Sheet Title

AS100



UNIT MATRIX
3 bedroom unit - 1
2 bedroom units - 18
1 bedroom units - 52
Total Units - 71
Unit Type
Type B (Adaptable) - 60 units
Type A (Accessible) - 13 units
Total Units - 73 units
Unit Areas
3 bedroom unit - 1,073 sf
2 bedroom units - 13,608 sf
1 bedroom units - 28,194 sf
Total Unit Area - 41,444 sf
Common Space Area
Total Common Area - 19,918 sf
Total Building Area
Total Gross Building Area - 61,413 sf

SITE MATRIX
Project Size
174,359
4.04 acres
OPEN SPACE AREA
72,343
1.672 acres
41.87% of Property Area
Property Unit Density
Zoning - PUD, Guided R3
Maximum Density -
204185/2,600 = 79 units
71 units provided
15.15 Units/Acre Provided
PARKING COLUNT
Parking Required
Multi-family - 2.25 stalls per unit
71 x 2.25 = 160 stalls req'd
Parking Provided
Standard Stalls - 114 stalls
Accessible Stalls - 7 stalls
Total Parking - 121 stalls
Total Loading - 4 stalls

2 PROPERTY MATRIX
N.T.S.

