

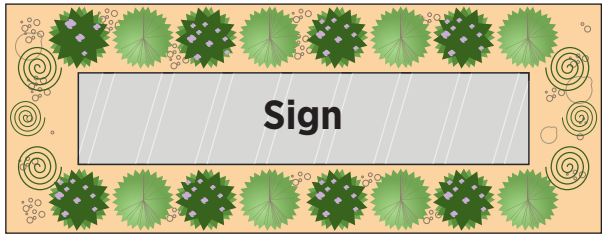
Illuminated Monument Sign

Square Footage: 70.47

Sign A



Landscape



Double Faced Illuminated Sign with EMC - 1 Required

Fabricate and install sign of aluminum and steel angle. Sign face to be aluminum routed with printed vinyl applied first surface. Backed with 3/16" white acrylic and vinyl for logos and text. Arch to have acrylic faces with vinyl applied. All exposed metal surfaces to be coated with acrylic polyurethane. Internal illumination to be white LEDs. **SIGN FACE TO BE SOLID ALUMINUM BACKGROUND. LOGO AND COPY ONLY TO BE ILLUMINATED** Masonry base provided by others.

- A Electrical Disconnect Switch
- B Aluminum Routed face with printed vinyl applied first surface. (Green gradient and yellow sash.)
- C Logos and Copy routed out of aluminum face, backed with acrylic and printed vinyl applied first surface.
- D Masonry Provided by client
- E 6" address in brushed aluminum (non-Illuminated)
- F EMC display shall change no more than once every ten (10) seconds and shall only contain static displays
- G Individually Illuminated topper with 1" trimcap lexan face and vinyl applied first surface.

SCALE 3/8"=1'		Drawn By: LH	
	Cabinet - Match 3630-76	Paint	
	Arch Topper - Match 3630-76	Paint	
	Trimcap = 1" Jewelite Solid Green	Trimcap	
	Vinyl - 3630-076	Vinyl	
	White - support pipes	Paint	
	Printed Vinyl	Vinyl	

Computer generated colors are not a true match to any PMS, vinyl or paint. Rendering shown is for concept only. Actual scale and placement shown are approximate.

All Signs Shall Be Installed In Accordance With N.E.C. Article 600

Engineering Specifications	Electrical Specifications
All Signs Fabricated as per A.S.A. Specifications & 2018 I.B.C.	All Signs Fabricated as per 2017 N.E.C. Specifications

NOTE: THIS DRAWING IS THE PROPERTY OF AURORA SIGN CO. IT IS NOT TO BE REPRODUCED, COPIED, OR EXHIBITED IN ANY FASHION WITHOUT WRITTEN CONSENT FROM AURORA SIGN CO. CHARGES OF UP TO \$2000.00 WILL BE ASSESSED FOR ANY MIS-USE OF THESE DRAWINGS.

AURORA

SIGN CO.

OFFICE: 630-898-5900 • AURORASIGN.COM

196 CALUMET AVENUE W • WARRENVILLE, IL 60555

Prepared For:

Jet Brite

Location Name:

Naperville - Rt 59

Address:

NE corner Rt 59 and 83rd St.

City/State:

Naperville, IL 60563

Drwg: 221445

Sheet: 1

Design Date: 11/1/2022

Rev A: 12/12/2022

Rev D:

Rev B:

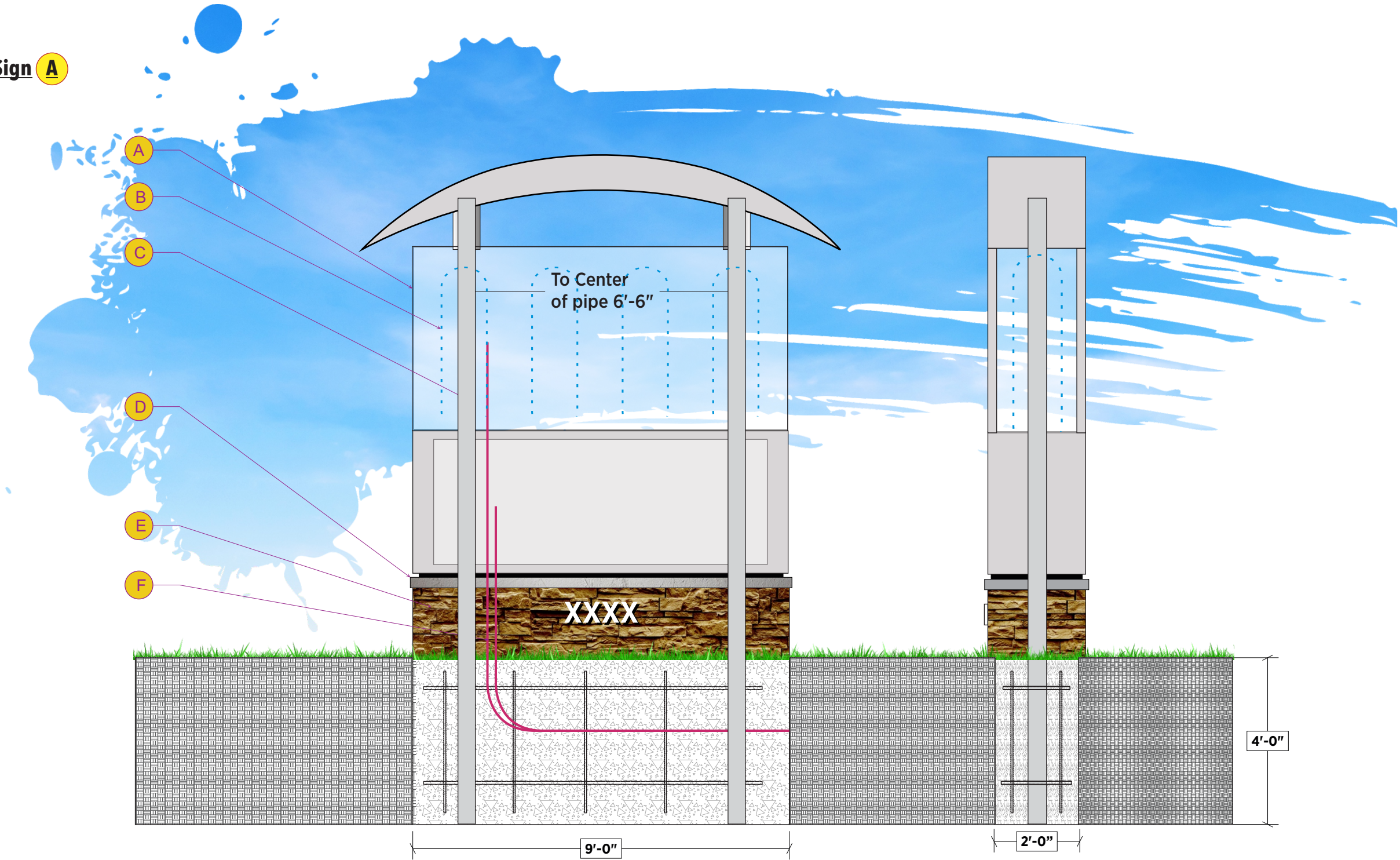
Rev E:

Rev C:

Rev F:

LANDLORD APPROVAL SIGNATURE

Sign **A**



**Installation and fabrication**

Set (2) 5" steel round pipes in concrete footing to be 9' x 2' by 4' deep. Connect to electrical service to be provided by others prior to install.

- A** Aluminum angle frame and 2" aluminum retainer
- B** Sloan US white led
- C** 5" round steel pipe
- D** 3" limestone cap provided by others
- E** Masonry provided by others
- F** Electrical service to be provided by others.

<b>SCALE 3/8"=1'</b>	<b>Drawn By:</b> LH
----------------------	------------------------

Computer generated colors are not a true match to any PMS, vinyl or paint. Rendering shown is for concept only. Actual scale and placement shown are approximate.

**All Signs Shall Be Installed In Accordance With N.E.C. Article 600**

<b>Engineering Specifications</b> All Signs Fabricated as per A.S.A. Specifications & 2018 I.B.C.	<b>Electrical Specifications</b> All Signs Fabricated as per 2017 N.E.C. Specifications
---	---

NOTE: THIS DRAWING IS THE PROPERTY OF AURORA SIGN CO. IT IS NOT TO BE REPRODUCED, COPIED, OR EXHIBITED IN ANY FASHION WITHOUT WRITTEN CONSENT FROM AURORA SIGN CO. CHARGES OF UP TO \$2000.00 WILL BE ASSESSED FOR ANY MIS-USE OF THESE DRAWINGS.

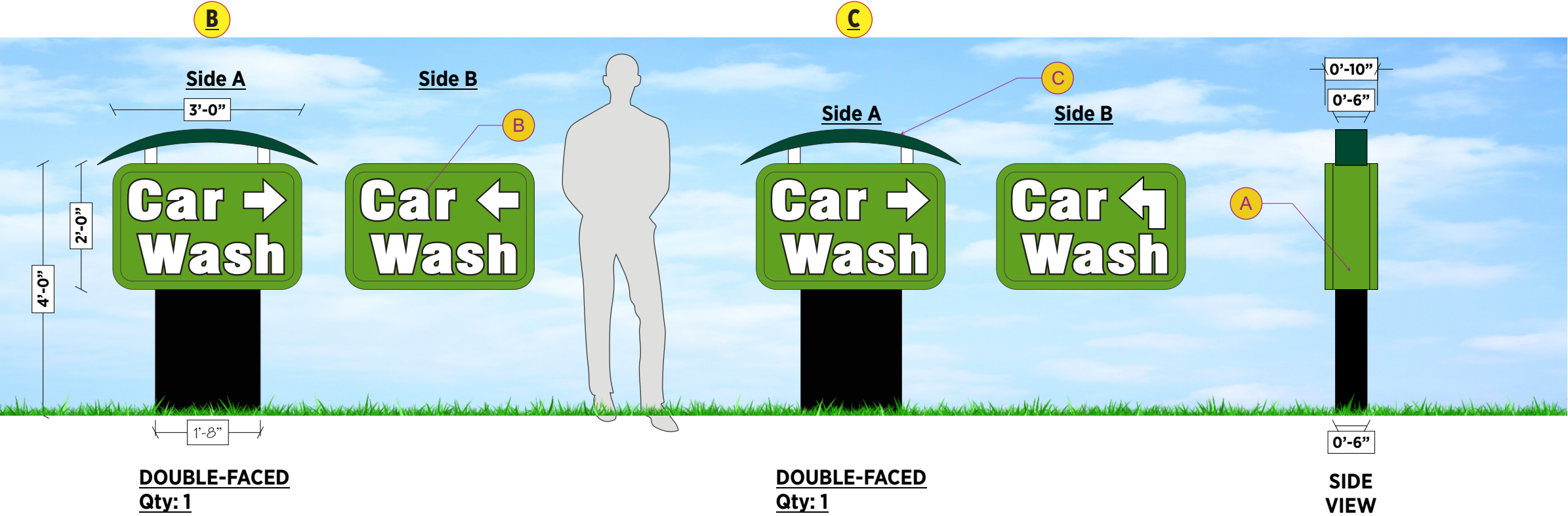
<b>AURORA SIGN CO.</b> <small>OFFICE: 630-898-5900 • AURORASIGN.COM 30W196 CALUMET AVENUE W • WARRENVILLE, IL 60555</small>	<b>Prepared For:</b> Jet Brite	<b>Address:</b> NE corner Rt 59 and 83rd St.	<b>Drwg:</b> 221445	<b>Sheet:</b> 1A	<b>Design Date:</b> 11/1/2022	<b>LANDLORD APPROVAL SIGNATURE</b>
	<b>Location Name:</b> Naperville - Rt 59	<b>City/State:</b> Naperville, IL 60563	Rev A:		Rev D:	
			Rev B:		Rev E:	
			Rev C:		Rev F:	



Directional Signs

Square Footage: 6.0 Each

Signs B C



Double Faced Illuminated Signs - 2 Required

Fabricate and install sign of aluminum and acrylic  
Sign face to be acrylic with printed vinyl applied first surface.  
All exposed metal surfaces to be coated with acrylic polyurethane. Internal illumination to be white LEDs.

- A Electrical Disconnect Switch
- B 3/16" acrylic faces with vinyl applied first surface.
- C Illuminated channel module top Arches with acrylic faces and vinyl applied first surface.

Installation and fabrication

Set 3" steel round pipes in concrete footing to be 42" deep  
Exact locations TBD

SCALE 1/2"=1'		Drawn By: LH	
	Cabinet - Match 3630-136		Paint/Vinyl
	Arch Topper - Match 3630-76		Paint
	Trimcap = Jewelite Solid Green		Trimcap
	Vinyl - 3630-076		Vinyl
	White - support pipes		Paint

Computer generated colors are not a true match to any PMS, vinyl or paint. Rendering shown is for concept only. Actual scale and placement shown are approximate.

All Signs Shall Be Installed In Accordance With N.E.C. Article 600

Engineering Specifications	Electrical Specifications
All Signs Fabricated as per A.S.A. Specifications & 2018 I.B.C.	All Signs Fabricated as per 2017 N.E.C. Specifications

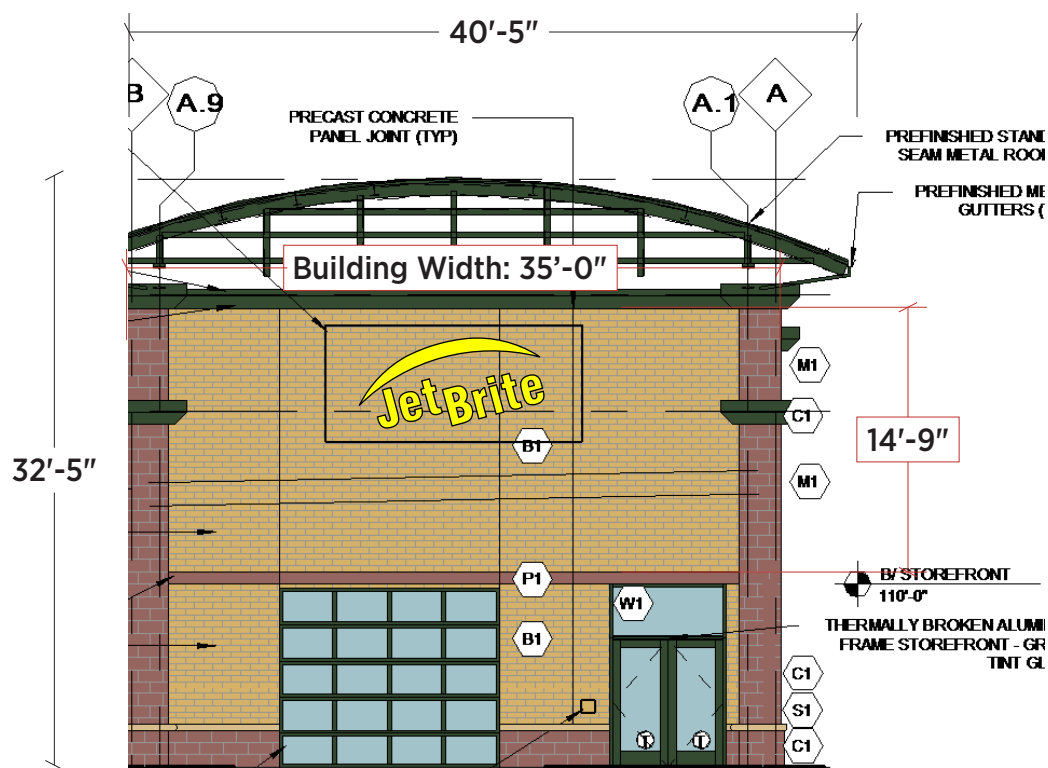
NOTE: THIS DRAWING IS THE PROPERTY OF AURORA SIGN CO. IT IS NOT TO BE REPRODUCED, COPIED, OR EXHIBITED IN ANY FASHION WITHOUT WRITTEN CONSENT FROM AURORA SIGN CO. CHARGES OF UP TO \$2000.00 WILL BE ASSESSED FOR ANY MIS-USE OF THESE DRAWINGS.

<div><div>AURORA SIGN CO.</div><div>OFFICE: 630-898-5900 • AURORASIGN.COM 30W196 CALUMET AVENUE W • WARRENVILLE, IL 60555</div></div>	<div>Prepared For: Jet Brite</div>	<div>Address: NE corner Rt 59 and 83rd St.</div>	<div>Drwg: 221445</div>	<div>Sheet: 2</div>	<div>Design Date: 11/1/2022</div>	<div>LANDLORD APPROVAL SIGNATURE</div>
	<div>Location Name: Naperville - Rt 59</div>	<div>City/State: Naperville, IL 60563</div>	<div>Rev A: 11/4/2022</div>		<div>Rev D:</div>	
			<div>Rev B: 12/12/2022</div>		<div>Rev E:</div>	
			<div>Rev C:</div>		<div>Rev F:</div>	

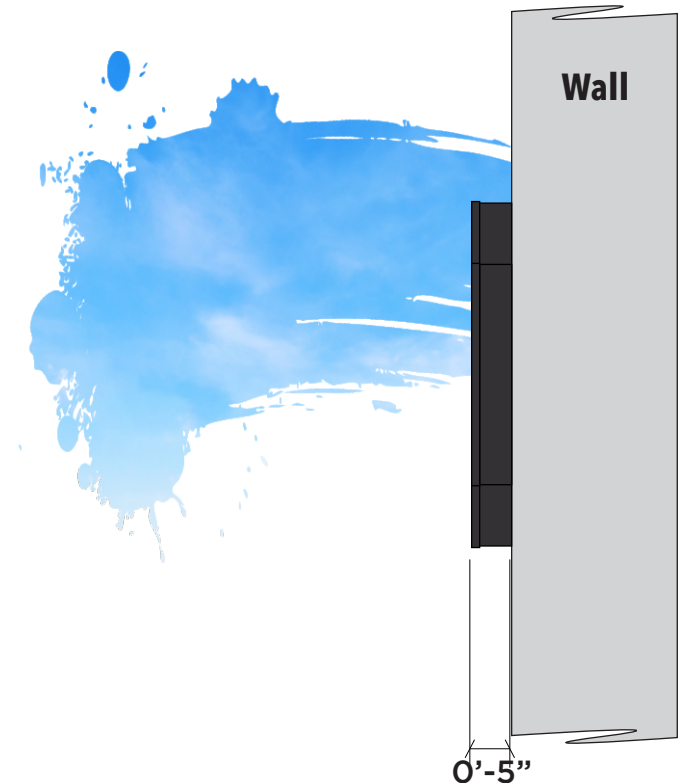
Square Footage: 51.25

Diagram illustrating the dimensions of a yellow curved sign:

- Overall width: 10'-3"
- Overall height: 5'-0"
- Height of the top section: 3'-9"
- Height of the bottom section: 3'-0"
- The sign features the text "Jet Brite" in a large, bold, yellow font.



**SOUTH ELEVATION SCALE 3/32"=1'**






Fabricate and install sign of aluminum and acrylic. Letter faces to be yellow acrylic . 5" letter-coil returns. Internal illumination to be white LEDs. All exposed metal surfaces to be coated with acrylic polyurethane.

- A** Yellow Acrylic faces with black trimcap and black returns.
- B** Electrical Disconnect Switch



**\* Survey Pending building completion.**

<b>SCALE 1/2"=1'</b>		<b>Drawn By:</b>	<b>LH</b>
	Acrylic Faces - Chemcast 2037	Acrylic Stock Paint	
	Trimcap - Black		
	Returns - Black		

Computer generated colors are not a true match to any PMS, vinyl or paint. Rendering shown is for concept only. Actual scale and placement shown are approximate.

**All Signs Shall Be Installed In Accordance With N.E.C. Article 600**

Engineering Specifications	Electrical Specifications
All Signs Fabricated as per A.S.A. Specifications & 2018 I.B.C.	All Signs Fabricated as per 2017 N.E.C. Specifications

NOTE: THIS DRAWING IS THE PROPERTY OF AURORA SIGN CO. IT IS NOT TO BE REPRODUCED, COPIED, OR EXHIBITED IN ANY FASHION WITHOUT WRITTEN CONSENT FROM AURORA SIGN CO. CHARGES OF UP TO \$2000.00 WILL BE ASSESSED FOR ANY MIS-USE OF THESE DRAWINGS.



<b>Prepared For:</b> Jet Brite	<b>Address:</b> NE corner Rt 59 and 83rd St.	<b>Drwg:</b> 221445	<b>Sheet:</b> 3	<b>Design Date:</b> 11/1/2022	<b><u>LANDLORD APPROVAL SIGNATURE</u></b>
		Rev A: 11/3/2022	Rev D:		
		Rev B: 11/4/2022	Rev E:		
		Rev C: 12/12/2022	Rev F:		
<b>Location Name:</b> Naperville - Rt 59	<b>City/State:</b> Naperville, IL 60563				



Sign E, F, G - West Elevation

Car Wash: 127.8  
Free Vacuums: 34.0  
\$3 Module: 21.1  
Square Footage total: 182.9



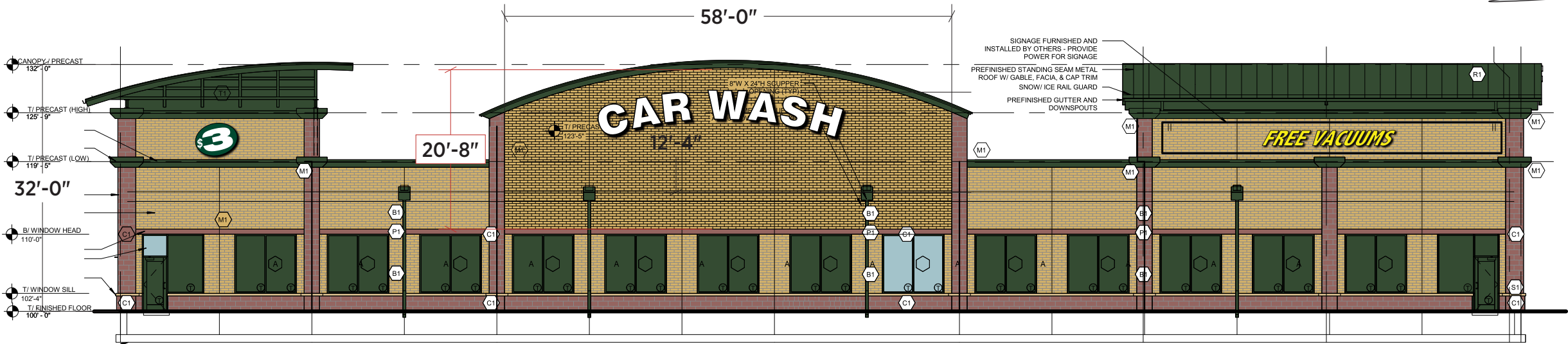
Illuminated Channel Letters  
Flush Mount - 1 Required

Fabricate and install sign of aluminum and acrylic. Letter faces to be acrylic. 5" letter-coil returns. Internal illumination to be white LEDs. All exposed metal surfaces to be coated with acrylic polyurethane.

- A White Acrylic faces with black trimcap and black returns.
- B Vinyl applied to white acrylic face.
- C Yellow Acrylic faces with black trimcap and black returns.
- D Electrical Disconnect Switch



\* Survey Pending building completion.



SCALE 1/4"=1' Drawn By: LH

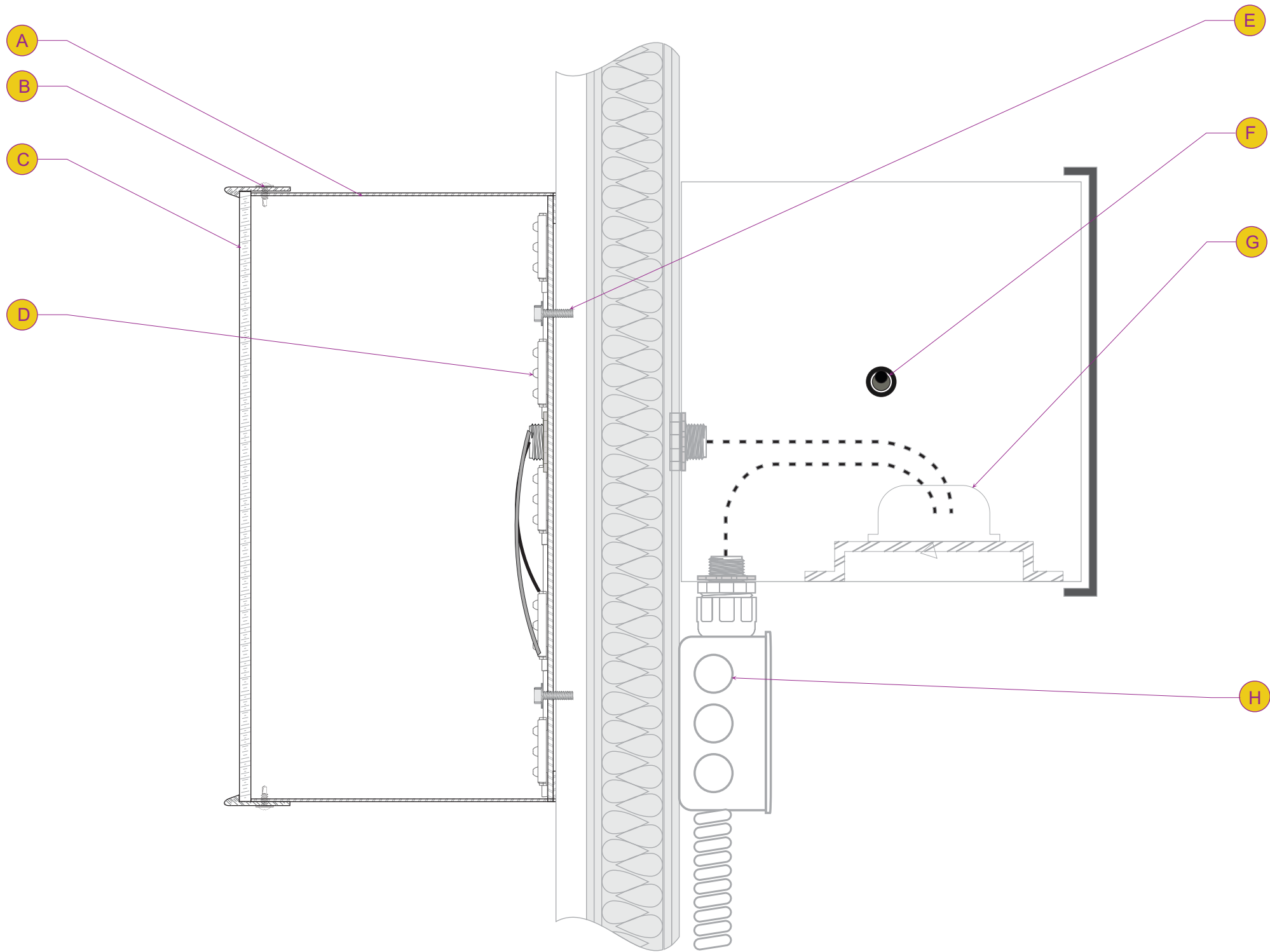
- \$3 Module - 3M 3630-76
- Acrylic Faces - Chemcast 2037
- Trimcap - Black
- Returns - Black

Computer generated colors are not a true match to any PMS, vinyl or paint. Rendering shown is for concept only. Actual scale and placement shown are approximate.

All Signs Shall Be Installed In Accordance With N.E.C. Article 600

Engineering Specifications  
All Signs Fabricated as per  
A.S.A. Specifications & 2018 I.B.C.

Electrical Specifications  
All Signs Fabricated as per  
2017 N.E.C. Specifications



**Illuminated Channel Letters**  
**Flush Mount**

- A 5" Letter coil
- B Standard Trim-cap
- C Acrylic Face
- D White LED
- E Wall Fastener
- F Disconnect Switch
- G Low Voltage Transformer
- H Electrical Service

**NOTES:**

	Drawn By:
	LH

Computer generated colors are not a true match to any PMS, vinyl or paint. Rendering shown is for concept only. Actual scale and placement shown are approximate.

**All Signs Shall Be Installed In Accordance With N.E.C. Article 600**

<b>Engineering Specifications</b> All Signs Fabricated as per A.S.A. Specifications & 2018 I.B.C.	<b>Electrical Specifications</b> All Signs Fabricated as per 2017 N.E.C. Specifications
---	---

NOTE: THIS DRAWING IS THE PROPERTY OF AURORA SIGN CO. IT IS NOT TO BE REPRODUCED, COPIED, OR EXHIBITED IN ANY FASHION WITHOUT WRITTEN CONSENT FROM AURORA SIGN CO. CHARGES OF UP TO \$2000.00 WILL BE ASSESSED FOR ANY MIS-USE OF THESE DRAWINGS.

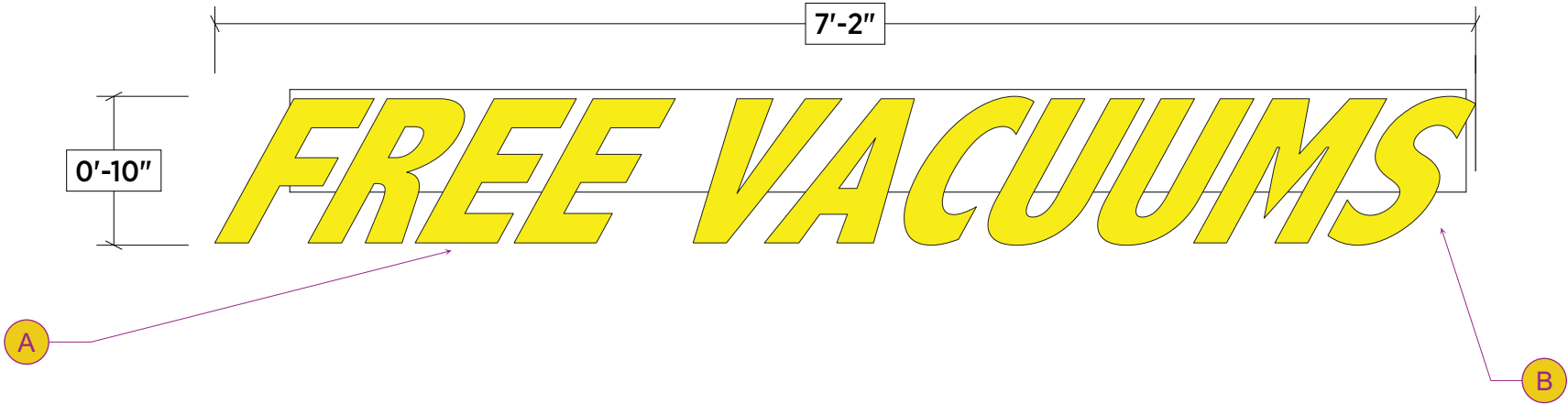
<b>AURORA</b> <b>SIGN CO.</b> <small>OFFICE: 630-898-5900 • AURORASIGN.COM 30W196 CALUMET AVENUE W • WARRENVILLE, IL 60555</small>	<b>Prepared For:</b> Jet Brite	<b>Address:</b> NE corner Rt 59 and 83rd St.	<b>Drwg:</b> 221445	<b>Sheet:</b> Detail 3A & 4A	<b>Design Date:</b> 11/1/2022	<b>LANDLORD APPROVAL SIGNATURE</b>
	<b>Location Name:</b> Naperville - Rt 59	<b>City/State:</b> Naperville, IL 60563	Rev A:		Rev D:	
			Rev B:		Rev E:	
			Rev C:		Rev F:	



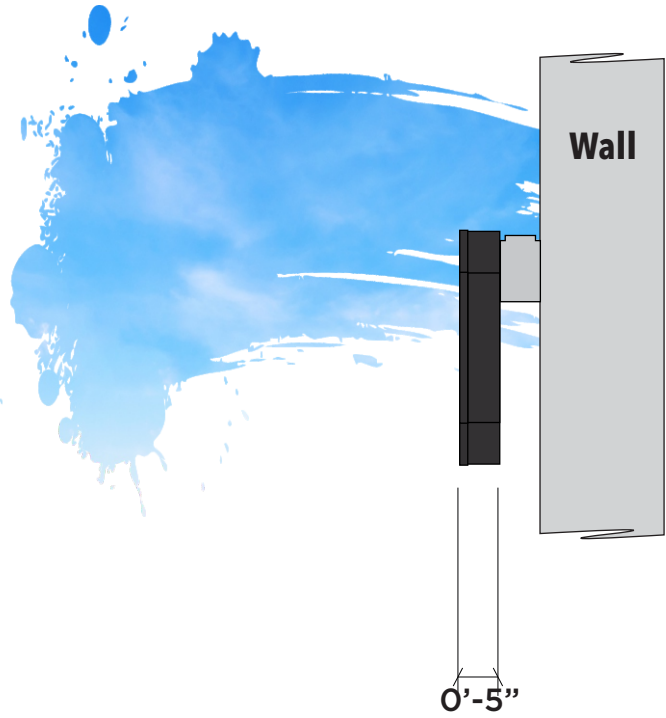
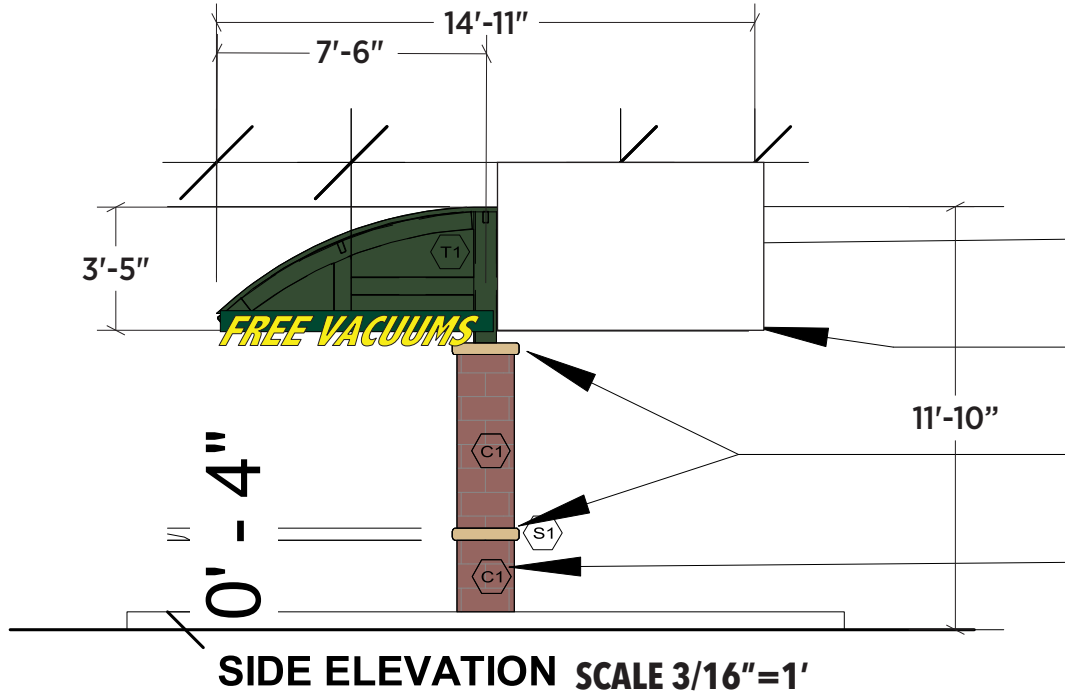
Sign H & I - West & South Elevation Canopy Sign

Square Footage: 5.94

Signs H I



\*located on only the canopy (the parking spaces along the west side of the building) on the north and south ends.\*



Illuminated Channel Letters  
on Raceway - 2 Required

Fabricate and install sign of aluminum and acrylic. Letter faces to be yellow acrylic. 5" letter-coil returns. Internal illumination to be white LEDs. All exposed metal surfaces to be coated with acrylic polyurethane. Raceway painted to match wall.

- A Yellow Acrylic faces with black trimcap and black returns.
- B Electrical Disconnect Switch



\* Survey Pending building completion.

SCALE 1"=1'		Drawn By: LH	
	Acrylic Faces - Chemcast 2037	<div>Acrylic</div> <div>Stock</div> <div>Paint</div> <div>Paint</div>	
	Trimcap - Black		
	Returns - Black		
	Raceway - PMS 446C		

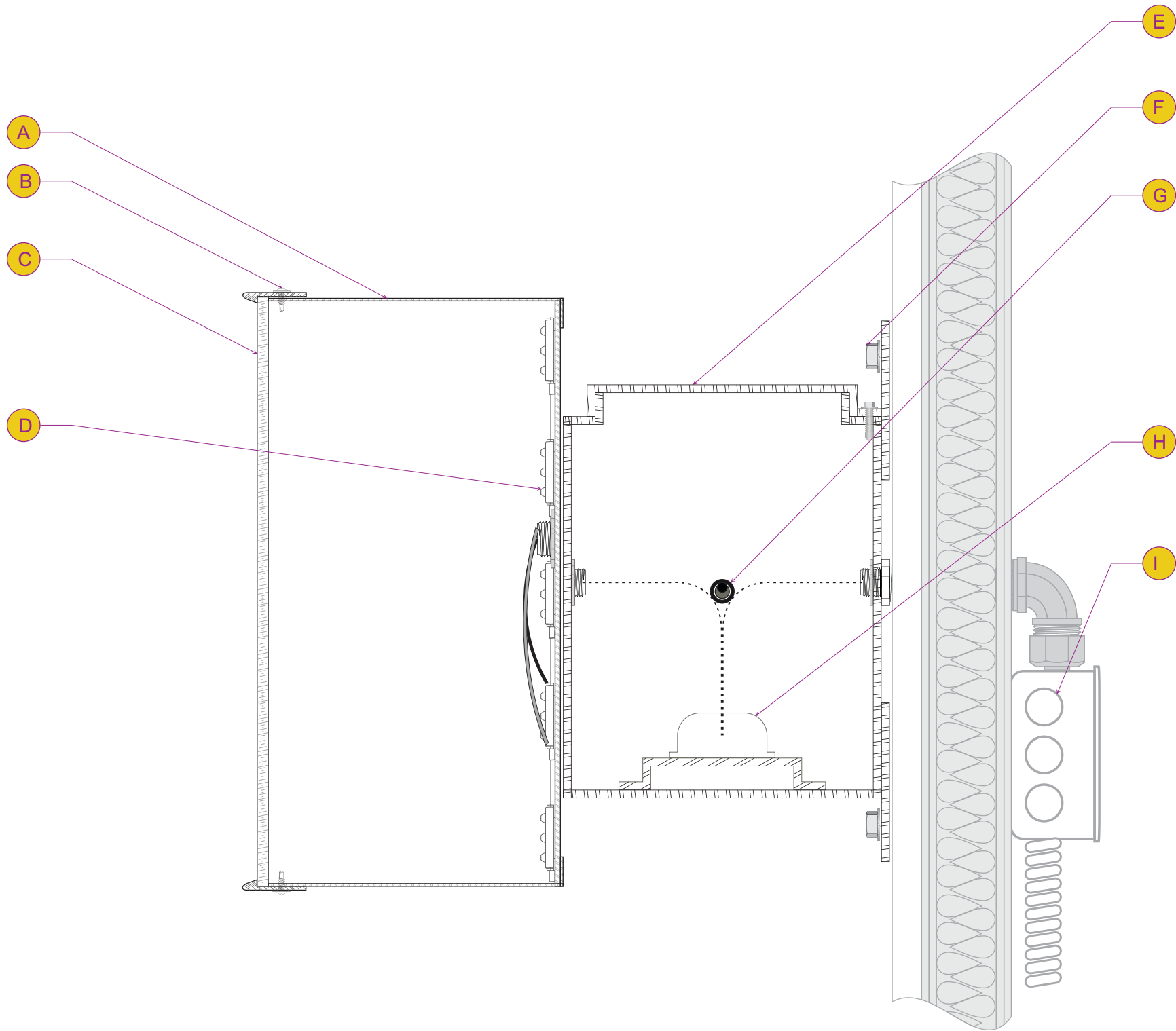
Computer generated colors are not a true match to any PMS, vinyl or paint. Rendering shown is for concept only. Actual scale and placement shown are approximate.

All Signs Shall Be Installed In Accordance With N.E.C. Article 600

Engineering Specifications	Electrical Specifications
All Signs Fabricated as per A.S.A. Specifications & 2018 I.B.C.	All Signs Fabricated as per 2017 N.E.C. Specifications

NOTE: THIS DRAWING IS THE PROPERTY OF AURORA SIGN CO. IT IS NOT TO BE REPRODUCED, COPIED, OR EXHIBITED IN ANY FASHION WITHOUT WRITTEN CONSENT FROM AURORA SIGN CO. CHARGES OF UP TO \$2000.00 WILL BE ASSESSED FOR ANY MIS-USE OF THESE DRAWINGS.

<b>Prepared For:</b>  Jet Brite	<b>Address:</b>  NE corner Rt 59 and 83rd St.	<b>Drwg:</b> 221445	<b>Sheet:</b> 5	<b>Design Date:</b> 11/1/2022	<b><u>LANDLORD APPROVAL SIGNATURE</u></b>
		Rev A: 11/3/2022		Rev D:	
		Rev B: 11/4/2022		Rev E:	
		Rev C: 12/12/2022		Rev F:	
<b>Location Name:</b>  Naperville - Rt 59	<b>City/State:</b>  Naperville, IL 60563				



**Illuminated Channel Letters  
on a Raceway**

- A** 5" Letter coil
- B** Standard Trim-cap
- C** Acrylic Face
- D** White LED
- E** Raceway 7" x 4 1/2"
- F** Wall Fastener
- G** Disconnect Switch
- H** Low Voltage Transformer
- I** Electrical Service

**NOTES:**


	<b>Drawn By:</b>
	<b>LH</b>

Computer generated colors are not a true match to any PMS, vinyl or paint. Rendering shown is for concept only. Actual scale and placement shown are approximate.

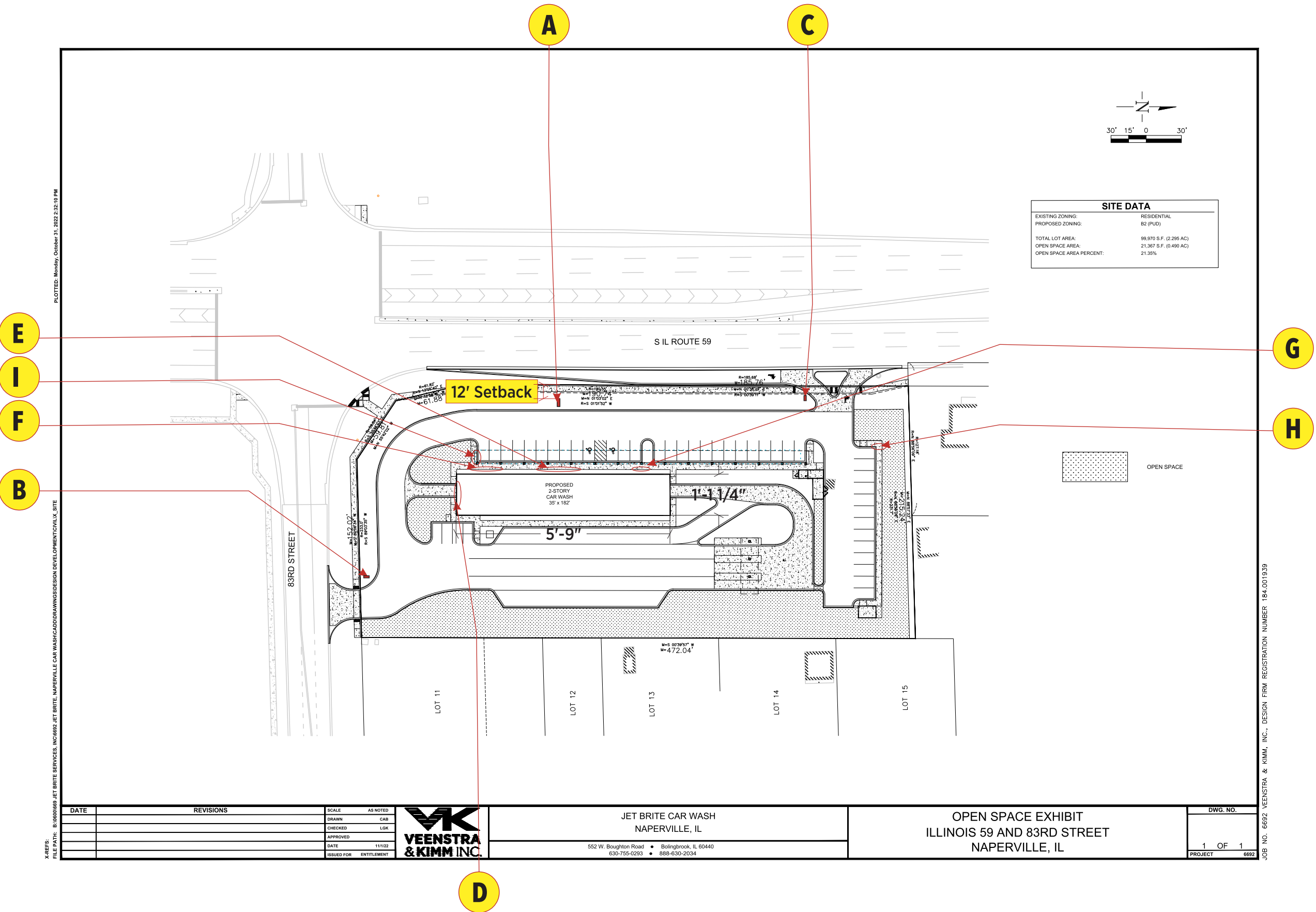
**All Signs Shall Be Installed In Accordance With N.E.C. Article 600**

<b>Engineering Specifications</b> All Signs Fabricated as per A.S.A. Specifications & 2018 I.B.C.	<b>Electrical Specifications</b> All Signs Fabricated as per 2017 N.E.C. Specifications
---	---

NOTE: THIS DRAWING IS THE PROPERTY OF AURORA SIGN CO. IT IS NOT TO BE REPRODUCED, COPIED, OR EXHIBITED IN ANY FASHION WITHOUT WRITTEN CONSENT FROM AURORA SIGN CO. CHARGES OF UP TO \$2000.00 WILL BE ASSESSED FOR ANY MIS-USE OF THESE DRAWINGS.

 <div>OFFICE: 630-898-5900 • AURORASIGN.COM 30W196 CALUMET AVENUE W • WARRENVILLE, IL 60555</div>	<b>Prepared For:</b> Jet Brite	<b>Address:</b> NE corner Rt 59 and 83rd St.	<b>Drwg:</b> 221445	<b>Sheet:</b> 5A	<b>Design Date:</b> 11/1/2022	<b>LANDLORD APPROVAL SIGNATURE</b>
	<b>Location Name:</b> Naperville - Rt 59	<b>City/State:</b> Naperville, IL 60563	Rev A:		Rev D:	
			Rev B:		Rev E:	
			Rev C:		Rev F:	





SITE DATA	
EXISTING ZONING:	RESIDENTIAL
PROPOSED ZONING:	B2 (PUD)
TOTAL LOT AREA:	99,970 S.F. (2.295 AC)
OPEN SPACE AREA:	21,367 S.F. (0.490 AC)
OPEN SPACE AREA PERCENT:	21.35%

DATE	REVISIONS	SCALE	AS NOTED	<div><div>JET BRITE CAR WASH NAPERVILLE, IL</div><div>552 W. Boughton Road • Bolingbrook, IL 60440 630-755-0293 • 888-630-2034</div></div>	OPEN SPACE EXHIBIT ILLINOIS 59 AND 83RD STREET NAPERVILLE, IL	DWG. NO.	
						1 OF 1	
						PROJECT	6692


	Drawn By:
	LH

Computer generated colors are not a true match to any PMS, vinyl or paint. Rendering shown is for concept only. Actual scale and placement shown are approximate.

All Signs Shall Be Installed In Accordance With N.E.C. Article 600

Engineering Specifications	Electrical Specifications
All Signs Fabricated as per A.S.A. Specifications & 2018 I.B.C.	All Signs Fabricated as per 2017 N.E.C. Specifications

NOTE: THIS DRAWING IS THE PROPERTY OF AURORA SIGN CO. IT IS NOT TO BE REPRODUCED, COPIED, OR EXHIBITED IN ANY FASHION WITHOUT WRITTEN CONSENT FROM AURORA SIGN CO. CHARGES OF UP TO \$2000.00 WILL BE ASSESSED FOR ANY MIS-USE OF THESE DRAWINGS.

 <div>OFFICE: 630-898-5900 • AURORASIGN.COM 30W196 CALUMET AVENUE W • WARRENVILLE, IL 60555</div>	Prepared For:	Address:	Drwg: 221445	Sheet:	Design Date:	LANDLORD APPROVAL SIGNATURE
	Jet Brite	NE corner Rt 59 and 83rd St.		SITE MAP	11/1/2022	
	Location Name:	City/State:	Rev A:		Rev D:	
	Naperville - Rt 59	Naperville, IL 60563	Rev B:		Rev E:	
			Rev C:		Rev F:	