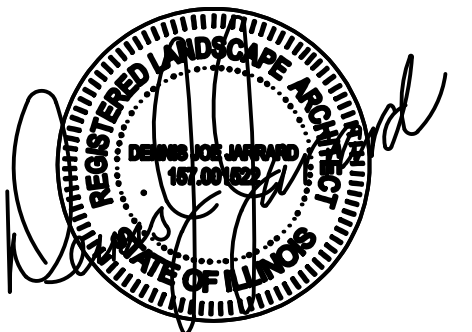


professional seal:



professional in charge:  
DENNIS JARRARD, P.L.A.  
checked by:  
DJJ  
drawn by:  
DJJ

project:

**MARKET MEADOWS**

**NAPERVILLE, ILLINOIS**

1227- 1309 S NAPER BLVD

#20200011.0

**shorewood**  
DEVELOPMENT GROUP

sheet title:

**LANDSCAPE PLANTING PLAN**

date:

08/23/20

revisions:

date	description
08/18/20	PERMIT SUBMITTAL
10/16/20	PERMIT RESPONSE
11/17/20	PERMIT RESPONSE

sheet:

**L1.0**

NOT ISSUED FOR CONSTRUCTION

**PLANT SCHEDULE**

TREES	CODE	QTY	BOTANICAL NAME	COMMON NAME	CONT	CAL	SIZE
	AAB	21	Acer freemanii 'Autumn Blaze' STRONG LEADER	Autumn Blaze Maple	2.5" Cal.	B&B	10' -12' Ht. Min.
	AGA	7	Amelanchier x grandiflora 'Autumn Brilliance' MULTI STEM (MIN. 3 CANES)	'Autumn Brilliance' Serviceberry	6' MIN. HT.	B&B	
	GD	11	Gymnocladus dioica 'Espresso' STRONG LEADER	Kentucky Coffeetree	2.5" Cal.	B&B	
	PGD	7	Picea glauca 'Densata' STRONG CENTRAL LEADER	Black Hills Spruce	B & B		6' -8' HT. MIN.
	TAR	3	Tilia americana 'Redmond'	Redmond American Linden	2.5" Cal.	B&B	
	UMG	6	Ulmus x 'Morton Glossy' TM	Triumph Elm	2.5" Cal.	B&B	
SHRUBS	CODE	QTY	BOTANICAL NAME	COMMON NAME	CONT	HEIGHT	SPREAD
	HAA	174	Hydrangea arborescens 'Annabelle'	Annabelle Hydrangea	5 gal	24" HT. MIN.	
	JCK	34	Juniperus chinensis 'Kallays Compact'	Kallay Compact Pfitzer Juniper	2' Ht.	B&B	
	RAG	748	Rhus aromatica 'Gro-Low'	Gro-Low Fragrant Sumac	3 gal	Container	24" Spr. Min.
	SMK	27	Syringa patula 'Miss Kim'	Miss Kim Lilac	30" Ht.	B&B	
	TMD	66	Taxus x media 'Densiformis'	Dense Yew	B & B	24" HT. MIN.	
	TOT	12	Thuja occidentalis 'Techny'	Techny Arborvitae	6' Ht.	B&B	
	VLJ	25	Viburnum dentatum 'KLMseventeen' TM	Little Joe	B & B	30"-36" Ht. Min.	
	VTB	26	Viburnum trilobum 'Bailey Compact'	Bailey's Compact American Cranberry Bush	30" Ht.	Container	
ANNUALS/PERENNIALS	CODE	QTY	BOTANICAL NAME	COMMON NAME	CONT	HEIGHT	SPREAD
	HHR	468	Hemerocallis x 'Happy Returns'	Happy Returns Daylily	1 gal	Container	
	RFG	73	Rudbeckia fulgida 'Goldsturm'	Goldsturm Coneflower	1 gal	Container	
	SAJ	24	Sedum x 'Autumn Joy'	Autumn Joy Sedum	1 gal	Container	
GRASSES	CODE	QTY	BOTANICAL NAME	COMMON NAME	CONT	HEIGHT	SPREAD
	CAK	287	Calamagrostis x acutiflora 'Karl Foerster'	Feather Reed Grass	1 gal	Container	
	MSM	12	Miscanthus sinensis 'Morning Light'	Eulalia Grass	3 gal	Container	
	PVS	61	Panicum virgatum 'Shenandoah'	Shenandoah Switch Grass	3 gal	Container	
	PAH	25	Pennisetum alopecuroides 'Hameln'	Hameln Dwarf Fountain Grass	1 gal	Container	
SHRUB AREAS	CODE	QTY	BOTANICAL NAME	COMMON NAME	CONT	HEIGHT	SPREAD
	EC	314	Euonymus fortunei 'Colorata' SPACING 18" O.C.	Purple-leaf Winter Creeper			
GROUND COVERS	CODE	QTY	BOTANICAL NAME	COMMON NAME	CONT	HEIGHT	SPREAD
	PP	14,130 sf	Lawn Grasses	Kentucky BluegrassBlend	seed		

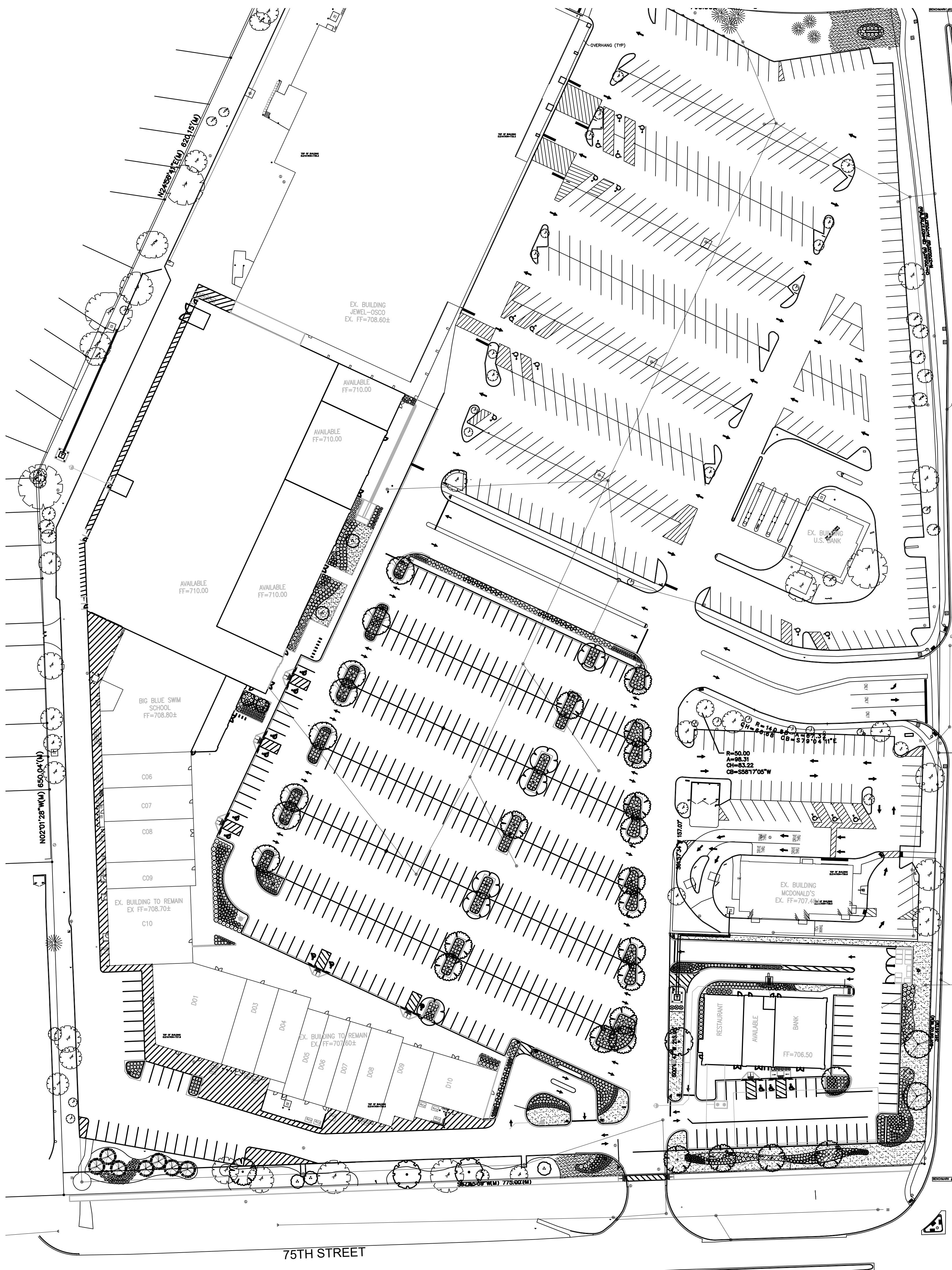
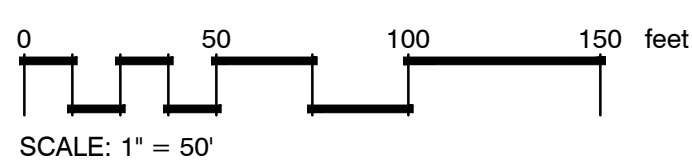
**GENERAL NOTES:**

- GRAPHIC SYMBOLS TAKE PRECEDENCE OVER WRITTEN QUANTITIES AND KEYS ON PLAN.
- CONTRACTOR TO REPAIR AND REPLACE ANY PLANT MATERIAL DAMAGED BY THIS CONSTRUCTION OUTSIDE PROJECT LIMITS. ANY EXISTING PLANT MATERIAL DAMAGED BY CONTRACTOR DURING CONSTRUCTION SHALL BE REPLACED WITH LIKE MATERIAL OF SIMILAR SPECIES AND SIZE AT THE CONTRACTOR'S EXPENSE WITH NO ADDITIONAL COST TO OWNER OR TENANT.
- TWO WEEKS PRIOR TO PLANTING, THE CONTRACTOR SHALL SUBMIT TO THE OWNER / OWNER'S REPRESENTATIVE A PLANT PHOTO SUBMITTAL FOR APPROVAL.
- EACH PHOTO SHALL CLEARLY SHOW THE SIZE, FORM, AND BRANCHING STRUCTURE AND QUALITY OF THE PLANT.
- EACH PHOTO SHALL HAVE THE PLANT NAME, SIZE AND SPECIFICATIONS LABELED ON THE PHOTO.
- ANY PHOTO SHOWING A GROUP OF PLANTS CLOSE TOGETHER WILL NOT BE ACCEPTED.
- NO PARTIAL OR INCOMPLETE SUBMITTAL WILL BE ACCEPTED FOR REVIEW. ANY REJECTED SPECIES WILL BE SUBJECT TO RESUBMITTAL.
- PRIOR TO SUBMITTING BID, THE CONTRACTOR IS TO REVIEW EXISTING SITE CONDITIONS AND PLANT MATERIAL TO BE PROTECTED. ANY TREES TO BE PRESERVED THAT ARE FOUND IN AN UNHEALTHY GROWING CONDITION ARE TO BE REMOVED FROM THE SITE AND DISPOSED OF PROPERLY. EXISTING TREES SHOULD BE PRUNED AS IF NECESSARY IN ACCORDANCE WITH GOOD HORTICULTURAL PRACTICE AND REQUIREMENTS OF THE CITY OF NAPERVILLE TO PRESERVE STRUCTURE AND LONG TERM SURVIVABILITY OF TREES. ANY EXISTING TREES THAT ARE DEEMED UNHEALTHY ARE TO BE BROUGHT TO THE ATTENTION OF THE LANDSCAPE ARCHITECT PRIOR TO REMOVAL, FOR FURTHER REVIEW.

**MAINTENANCE OF LANDSCAPING:**

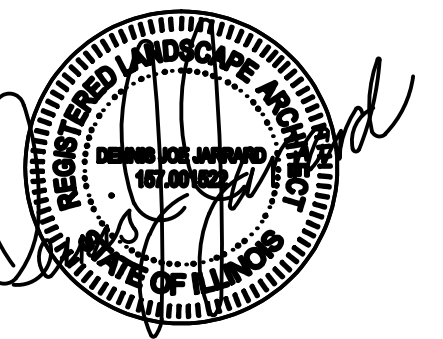
THE OWNER, TENANT, OR AGENT, IF ANY, SHALL BE RESPONSIBLE FOR PROVIDING, PROTECTING AND MAINTAINING ALL LANDSCAPING IN HEALTHY GROWING CONDITIONS, REPLACING IT WHEN NECESSARY TO ENSURE CONTINUOUS CONFORMANCE WITH THESE GUIDELINES AND KEEPING IT FREE FROM REFUSE AND DEBRIS. MAINTENANCE SHALL INCLUDE THE REPLACEMENT OF ALL DEAD PLANT MATERIAL WITHIN THE GUARANTEED CONTRACT PERIOD.

**OVERALL PLANTING PLAN**



#20-10000081

professional seal:



professional in charge:  
DENNIS JARRARD, P.L.A.  
checked by:  
D.J.J.  
drawn by:  
D.J.J.

project:

**MARKET MEADOWS**

**NAPERVILLE, ILLINOIS**

1227- 1309 S NAPER BLVD

#20200011.0

**shorewood**  
DEVELOPMENT GROUP

sheet title:

**PLANTING PLAN ENLARGEMENT**

date:  
08/23/20

revisions:

date	description
08/10/20	PERM SUBMITAL
10/14/20	PERM RESPONSE
11/17/20	PERM RESPONSE

sheet:

**L1.1**

NOT ISSUED FOR CONSTRUCTION

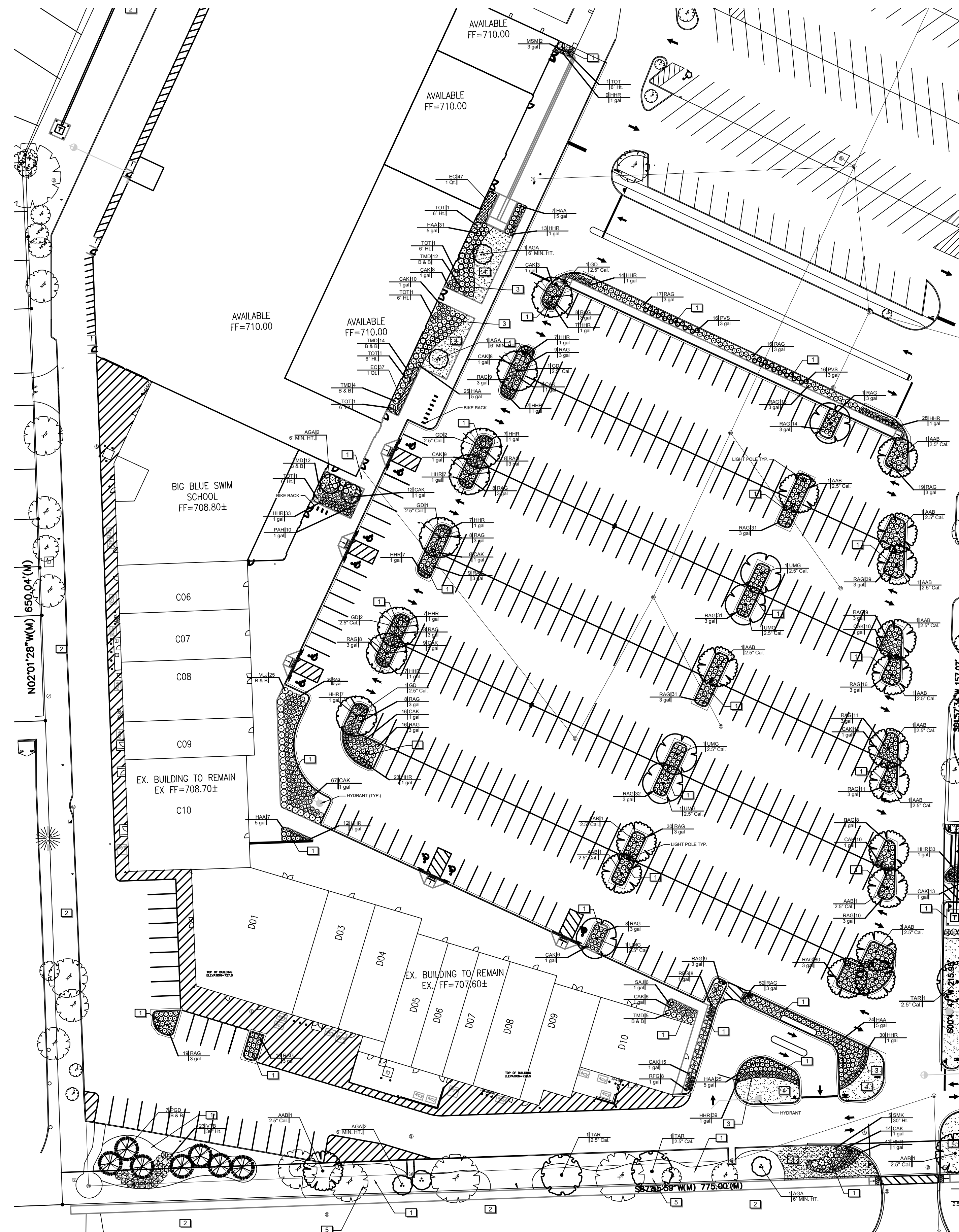
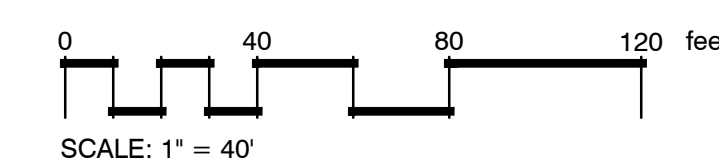
**PLANT SCHEDULE**

TREES	CODE	BOTANICAL NAME	COMMON NAME
	AAB	Acer freemanii 'Autumn Blaze' STRONG LEADER	Autumn Blaze Maple
	AGA	Amelanchier x grandiflora 'Autumn Brilliance' MULTI STEM (MIN. 3 CANES)	'Autumn Brilliance' Serviceberry
	GD	Gymnocladus dioica 'Espresso' STRONG LEADER	Kentucky Coffeetree
	PGD	Picea glauca 'Densata' STRONG CENTRAL LEADER	Black Hills Spruce
	TAR	Tilia americana 'Redmond'	Redmond American Linden
	UMG	Ulmus x 'Morton Glossy' TM	Triumph Elm
SHRUBS	CODE	BOTANICAL NAME	COMMON NAME
	HAA	Hydrangea arborescens 'Annabelle'	Annabelle Hydrangea
	JCK	Juniperus chinensis 'Kallays Compact'	Kallay Compact Pfitzer Juniper
	RAG	Rhus aromatica 'Gro-Low'	Gro-Low Fragrant Sumac
	SMK	Syringa patula 'Miss Kim'	Miss Kim Lilac
	TMD	Taxus x media 'Densiformis'	Dense Yew
	TOT	Thuja occidentalis 'Techny'	Techny Arborvitae
	VLJ	Viburnum dentatum 'KLMseventeen' TM	Little Joe
	VTB	Viburnum trilobum 'Bailey Compact'	Bailey's Compact American Cranberry Bush
ANNUALS/PERENNIALS	CODE	BOTANICAL NAME	COMMON NAME
	HHR	Hemerocallis x 'Happy Returns'	Happy Returns Daylily
	RFG	Rudbeckia fulgida 'Goldsturm'	Goldsturm Coneflower
	SAJ	Sedum x 'Autumn Joy'	Autumn Joy Sedum
GRASSES	CODE	BOTANICAL NAME	COMMON NAME
	CAK	Calamagrostis x acutiflora 'Karl Foerster'	Feather Reed Grass
	MSM	Miscanthus sinensis 'Morning Light'	Eulalia Grass
	PVS	Panicum virgatum 'Shenandoah'	Shenandoah Switch Grass
	PAH	Pennisetum alopecuroides 'Hameln'	Hameln Dwarf Fountain Grass
SHRUB AREAS	CODE	BOTANICAL NAME	COMMON NAME
	EC	Euonymus fortunei 'Colorata' SPACING 18" O.C.	Purple-leaf Winter Creeper
GROUND COVERS	CODE	BOTANICAL NAME	COMMON NAME
	PP	Lawn Grasses	Kentucky BluegrassBlend

**REFERENCE NOTES SCHEDULE**

SYMBOL	DESCRIPTION
1	3" DEPTH SHREDDED BARK MULCH IN ALL PLANT BEDS AND ISLANDS, TYPICAL, UNLESS OTHERWISE NOTED ON PLAN.
2	ANY DAMAGE TO ADJACENT PROPERTY OR AREAS OF WORK BY OTHERS IS TO BE REPAIRED TO ITS ORIGINAL CONDITION WITH NO ADDITIONAL COST TO OWNER.
3	CULTIVATED BEDLINE 4" DEPTH.
4	SEED LAWNS WITH KENTUCKY 31 TALL FESCUE AND BLUEGRASS BLEND COMMON TO LOCALITY. UPON COMPLETION OF SEED INSTALL EROSION CONTROL BLANKET.
5	CONTRACTOR TO REPAIR EXISTING BEDS ANY PLANT MATERIAL DAMAGE DURING CONSTRUCTION OF SIDEWALK IS TO BE REPLACED WITH LIKE TYPE AND KIND. PLANT MATERIAL INDICATED TO REMAIN PROTECTED AND IMPACTED BY CONSTRUCTION IS TO BE BROUGHT TO THE LANDSCAPE ARCHITECTS ATTENTION AS SOON AS POSSIBLE TO DETERMINE THE PROPER MITIGATION.

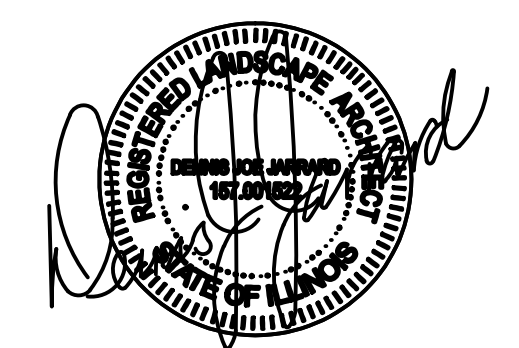
**PLANTING PLAN ENLARGEMENT**



#20-10000081

**COPYRIGHT NOTICE**  
This drawing is the property of the above referenced Professional and is not to be used for any purpose other than the specific project and site named herein, and cannot be reproduced in any manner without the express written permission from the Professional.

professional seal:



professional in charge:  
DENNIS JARRARD, PLA  
checked by:  
DJJ  
drawn by:  
DJJ

project:

**MARKET MEADOWS**

**NAPERVILLE, ILLINOIS**

1227- 1309 S NAPER BLVD

#20200011.0



sheet title:

**PLANTING PLAN ENLARGEMENT**

date:  
08/23/20

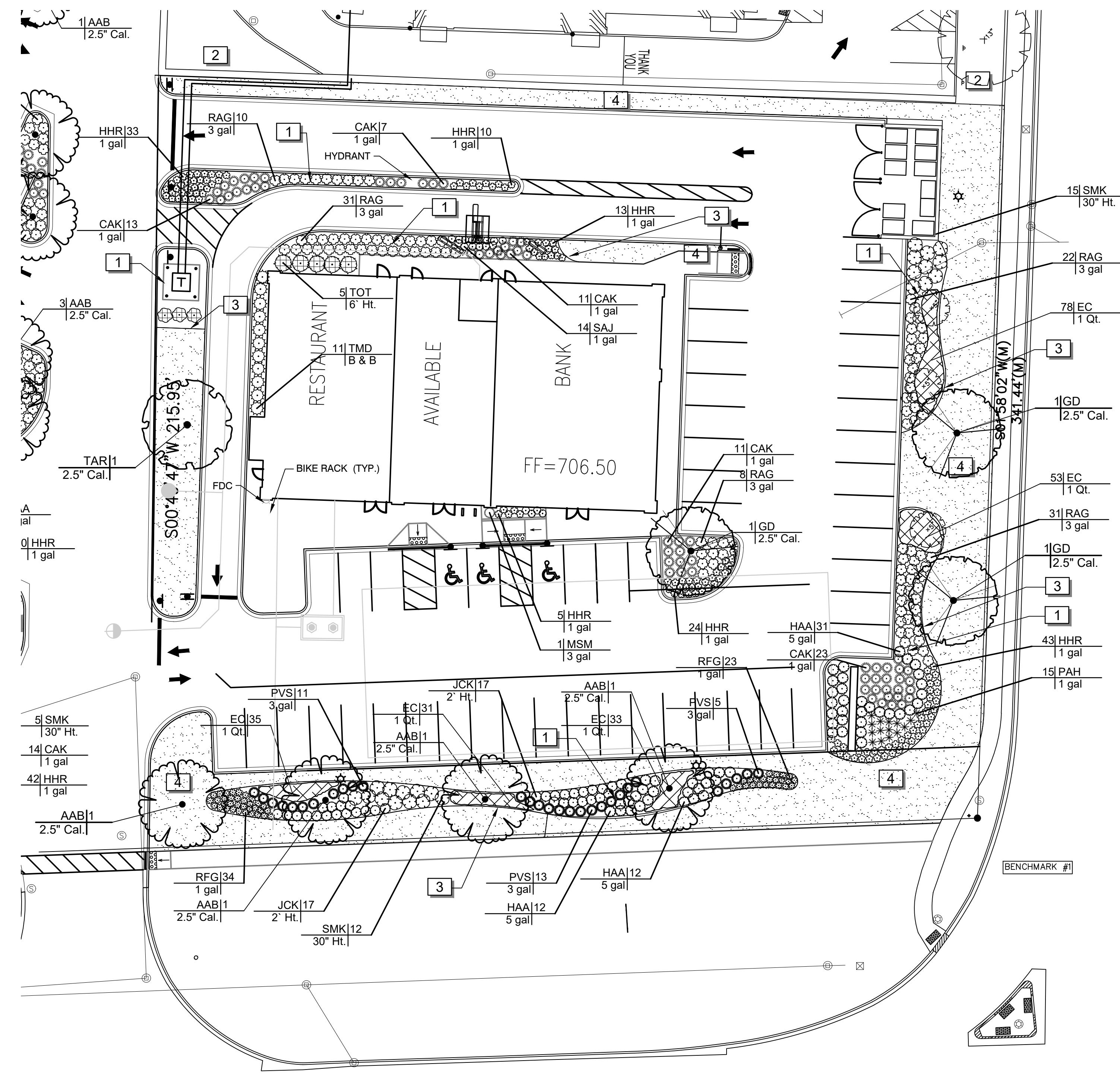
revisions:

date	description
08/18/20	PERMIT SUBMITAL
10/14/20	PERMIT RESPONSE
11/17/20	PERMIT RESPONSE

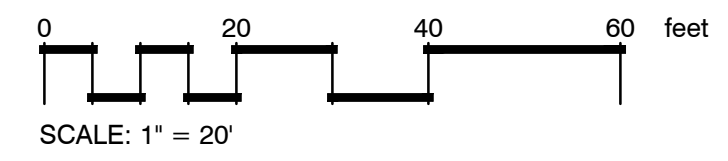
sheet:

**L1.2**

NOT ISSUED FOR CONSTRUCTION



**PLANTING PLAN ENLARGEMENT**



**PLANT SCHEDULE**

TREES	CODE	BOTANICAL NAME	COMMON NAME
	AAB	Acer freemanii 'Autumn Blaze' STRONG LEADER	Autumn Blaze Maple
	AGA	Amelanchier x grandiflora 'Autumn Brilliance' MULTI STEM (MIN. 3 CANES)	'Autumn Brilliance' Serviceberry
	GD	Gymnocladus dioica 'Espresso' STRONG LEADER	Kentucky Coffeetree
	PGD	Picea glauca 'Densata' STRONG CENTRAL LEADER	Black Hills Spruce
	TAR	Tilia americana 'Redmond'	Redmond American Linden
	UMG	Ulmus x 'Morton Glossy' TM	Triumph Elm
SHRUBS	CODE	BOTANICAL NAME	COMMON NAME
	HAA	Hydrangea arborescens 'Annabelle'	Annabelle Hydrangea
	JCK	Juniperus chinensis 'Kallays Compact'	Kallay Compact Pfitzer Juniper
	RAG	Rhus aromatica 'Gro-Low'	Gro-Low Fragrant Sumac
	SMK	Syringa patula 'Miss Kim'	Miss Kim Lilac
	TMD	Taxus x media 'Densiformis'	Dense Yew
	TOT	Thuja occidentalis 'Techny'	Techny Arborvitae
	VLJ	Viburnum dentatum 'KLMseventeen' TM	Little Joe
	VTB	Viburnum trilobum 'Bailey Compact'	Bailey's Compact American Cranberry Bush
ANNUALS/PERENNIALS	CODE	BOTANICAL NAME	COMMON NAME
	HHR	Hemerocallis x 'Happy Returns'	Happy Returns Daylily
	RFG	Rudbeckia fulgida 'Goldsturm'	Goldsturm Coneflower
	SAJ	Sedum x 'Autumn Joy'	Autumn Joy Sedum
GRASSES	CODE	BOTANICAL NAME	COMMON NAME
	CAK	Calamagrostis x acutiflora 'Karl Foerster'	Feather Reed Grass
	MSM	Miscanthus sinensis 'Morning Light'	Eulalia Grass
	PVS	Panicum virgatum 'Shenandoah'	Shenandoah Switch Grass
	PAH	Pennisetum alopecuroides 'Hameln'	Hameln Dwarf Fountain Grass
SHRUB AREAS	CODE	BOTANICAL NAME	COMMON NAME
	EC	Euonymus fortunei 'Colorata' SPACING 18" O.C.	Purple-leaf Winter Creeper
GROUND COVERS	CODE	BOTANICAL NAME	COMMON NAME
	PP	Lawn Grasses	Kentucky BluegrassBlend

**REFERENCE NOTES SCHEDULE**

SYMBOL	DESCRIPTION
	3" DEPTH SHREDDED BARK MULCH IN ALL PLANT BEDS AND ISLANDS, TYPICAL, UNLESS OTHERWISE NOTED ON PLAN.
	ANY DAMAGE TO ADJACENT PROPERTY OR AREAS OF WORK BY OTHERS IS TO BE REPAIRED TO ITS ORIGINAL CONDITION WITH NO ADDITIONAL COST TO OWNER.
	CULTIVATED BEDLINE 4" DEPTH.
	SEED LAWNS WITH KENTUCKY 31 TALL FESCUE AND BLUEGRASS BLEND COMMON TO LOCALITY. UPON COMPLETION OF SEED INSTALL EROSION CONTROL BLANKET.
	CONTRACTOR TO REPAIR EXISTING BEDS ANY PLANT MATERIAL DAMAGE DURING CONSTRUCTION OF SIDEWALK IS TO BE REPLACED WITH LIKE TYPE AND KIND. PLANT MATERIAL INDICATED TO REMAIN PROTECTED AND IMPACTED BY CONSTRUCTION IS TO BE BROUGHT TO THE LANDSCAPE ARCHITECTS ATTENTION AS SOON AS POSSIBLE TO DETERMINE THE PROPER MITIGATION.



#20-10000081

TECHNICAL LANDSCAPE SPECIFICATIONS

1.1 CONTRACTOR QUALIFICATIONS

The Landscape Contractor will be duly licensed by the appropriate authorities to handle plant materials. He will be covered by Public Liability and Property Insurance and his employee's covered by Workmen's Compensation Insurance.

1.2 SITE PREPARATION

A. Trees, brush or shrubs will not be pruned or removed from the site except as directed by the Landscape Architect. Competent personnel shall do all pruning and removal.

B. If the Contractor is responsible for furnishing fillsoil, the material will be clean and well draining, free of any organic matter, debris, trash and heavy clay.

C. If the Contractor is responsible for rough grading he will grade the subgrade to within a rough grading tolerance to two inches (2") and to be true to line and section.

D. The Contractor will be responsible for making himself familiar with all underground utilities, pipes and structures. Contractor shall take sole responsibility for cost incurred due to damage and replacement of said utilities.

E. The Contractor will verify all rights of way, easements, property lines and limits of work, etc. prior to commencing work.

F. The Contractor will coordinate all site layouts with Landscape Architect. Report any dimensional discrepancies to Landscape Architect prior to construction.

G. Any erosion and sedimentation from work on this site shall be contained on the site and not allowed to collect on any off-site areas or waterways.

H. The Contractor is responsible for replacement of any existing materials that are damaged during construction.

1.3 FINISH GRADING

A. Over the accepted subgrade, topsoil shall be spread over all lawn areas a minimum of six inches (6") unless otherwise specified.

B. Topsoil: Topsoil shall be clean, friable and representative of local productive soil capable of sustaining vigorous plant growth free of clay lumps, subsoil, noxious weeds or other foreign matter such as stones, roots, sticks and other deleterious material.

1.4 TREE PROTECTION

A. Prior to the initiation of any construction activity, approved tree protection shall be erected and will remain in place until construction is complete.

B. The following activities may not occur within the drip line of all protected trees on the site: 1. Storage of solvents, building materials, soil deposits, equipment, both idle and running, and vehicular parking

C. During construction, no wires, lines, etc. may be fastened in any form to any protected tree.

D. Care should be taken to prevent damage to any regulated trees located on adjacent properties that could be affected during construction.

E. When contracting utility services, notification must be given of the protected trees and all trenching is to be performed outside of the drip lines.

1.5 PLANT MATERIAL

A. All plant material called for in the plant list as shown on the drawing will be of minimum size specified or larger. The height and spread will be measured according to the horticultural standards of the American Association of Nurserymen.

B. No substitutions or changes of location, or plant types shall be made without the approval of the Landscape Architect.

C. The Landscape Architect will have the prerogative to request the source of supply for all plant material to be used, before delivery is started.

D. Only materials conforming to the requirements of these specifications or specimens approved by the Landscape Architect or authorized agents shall be used in the work.

E. The Bidder will not modify his bid because of his inability to find a source of supply of plant material specified.

1. The price to be paid the Landscape Contractor for furnishing, planting, and quarantining each substituted item will be the same proportion to the bid price as the catalog price determined above.

NOTE: A particular nursery catalog is stipulated only to set-up, before the opening of bids, a rigid procedure for negotiating unit prices on material substituted in place of the specified material.

F. Trees will be measured in trunk diameter six inches (6") above ground line if the trunk is four inches (4") or less in diameter. If over four inches (4") in diameter, it shall be measured twelve inches (12") above the normal ground line.

G. Small ornamental trees will be measured on an average from the ground line to the tops of previous year's growth on the vertical branches.

H. Multi-stemmed trees and shrubs will be measured at the average distance across the body of the plant from tip to tip of branches in their natural position, and at the average height.

I. Plants will be handled properly and protected during transportation to insure satisfactory condition at destination point.

J. Balled & burlapped plants will be carefully protected with wet straw, mulch, or other materials so that the plants will be stored with their roots in a moist and healthy condition.

K. Bare root stock is not permitted.

K. Trunks and branches of all trees will be carefully protected from injury of any kind during all operations of digging, loading and transporting.

L. All plants so specified, will be balled and burlapped previous to shipment. Such plants shall be lifted from the ground in such a manner as to retain a firm ball of earth.

M. All plant material shall be planted plumb and at the correct depth, and shall be staked, guyed and wrapped, as soon as possible after planting.

N. All pruning will be performed on the job site by a competent plantsman. All broken branches and roots will be removed in an approved manner providing a clean cut.

O. The Contractor will thin bare root plants by removing 1/3 of their branching. This will be done in an artful fashion so as not to destroy the natural character of the plant.

1.6 SOIL PREPARATION AND PLANTING

A. The Contractor shall prepare such quantities of planting soil as may be required to install plants in accordance with the accepted practice of the American Association of Nurserymen and to the satisfaction of the Landscape Architect.

Note: The contractor will acidify the ericaecious soil with peric sulfate to arrive at ph of 4.5

B. A general guideline for excavation of the plant pits follows:

Table with 4 columns: SIZE, PLANT, PIT SIZE \* (Each Side, Bottom\*\*), and PITCH. Rows include Deciduous Tree, Evergreen Tree, and Perennials.

Notes \* Soil conditions could modify these sizes \*\* After excavation, backfill with existing soil so that root ball sits at proper grade

C. Metal and tar paper containers shall be removed from all container grown plant materials. Biodegradable paper mache' containers may be left in place, but additional holes shall be punched through the sides to provide adequate drainage.

D. The Contractor is responsible for the proper placement, alignment and settling of all plants. Care shall be taken to place all plants at their proper depth.

1.7 SODDING

A. All lawn/turf areas to have six inches (6") of topsoil placed prior to sodding. Sod is to be a salt tolerant Kentucky Bluegrass blend.

B. Any area or amount of sod that dies shall be replaced at no additional expense to the Owner.

C. It is that intent of these specifications to obtain a finished lawn surface free of humps and depressions, and satisfactory for mowing with hand or mechanical mowers.

1.8 SEEDING AND SODDING MAINTENANCE

A. Maintenance shall begin immediately after a portion of turf is installed and shall be the responsibility of the contractor until substantial completion and approved by owner.

B. Maintenance shall also include, but not be limited to the watering, weeding, reseeding, resodding, rolling, trimming and other operations as necessary.

1.9 FERTILIZING AND WATERING OF PLANT MATERIAL

A. Fertilizing is left to the discretion of the Contractor. In no case should dry type commercial fertilizers be placed in the root zone, unless they are the pelletized slow-release type, designed for this purpose.

B. All plants will be thoroughly watered in by the Contractor immediately after planting. Watering will be the Contractors responsibility until the installation is accepted by the Owner.

1.10 EDGING

A. All beds to be edged with a spade cut edge to a depth of 4".

B. All pruning from the plan will not be allowed unless otherwise specified by the Landscape Architect.

1.11 STONE MULCH (If Specified)

A. All stone mulch specified on the plan will be of the type and size aggregate indicated and will be applied at the thickness specified on the plan.

B. The stone mulch material shall be consistent in size, shape, and color, will be of premium grade and washed clean prior to installation.

C. The stone mulch will be placed on top of Fabric Weed Barrier (Dupont Typar Style #3201 or equal) after the soil has been treated with an approved pre-emergent weed preventative.

1.12 SHREDDED BARK MULCH

A. All planting beds indicated on the plan shall contain a layer of Shredded Bark Mulch. Mulch shall be applied at the thickness specified on the plans.

B. The mulch material shall have a dark brown, fine shredded appearance with no large objectionable pieces. No wood chips will be allowed.

C. Approved pre-emergent weed preventative shall be applied to all mulched beds at a rate specified by the manufacturer.

D. All evergreen and deciduous trees in lawn areas will receive approximately ten (10) sq.ft. of Shredded Bark Mulch per tree at a four inch (4") minimum depth.

1.13 GUARANTEE

A. The Contractor will guarantee in writing all plant material to be true to name and in vigorous condition at time of planting. In addition, he will guarantee the life of all plant materials 100% for the period of one (1) year from the date of acceptance.

B. All construction will be guaranteed in writing against faulty workmanship and materials for the period of one (1) year.

1.16 MISCELLANEOUS NOTES

A. Care should be taken by Contractor not to plant under or over utility lines, and easements, or in any location where existing utilities will interfere with the growth of plant material.

B. Contractor shall be responsible for checking plant and material quantities to ensure quantities on drawings and plant list (if provided) are the same.

COPYRIGHT JARRARD DESIGN LLC., 2016

