

SIGN SPECIFICATIONS

[A] - ILLUMINATED LETTERS

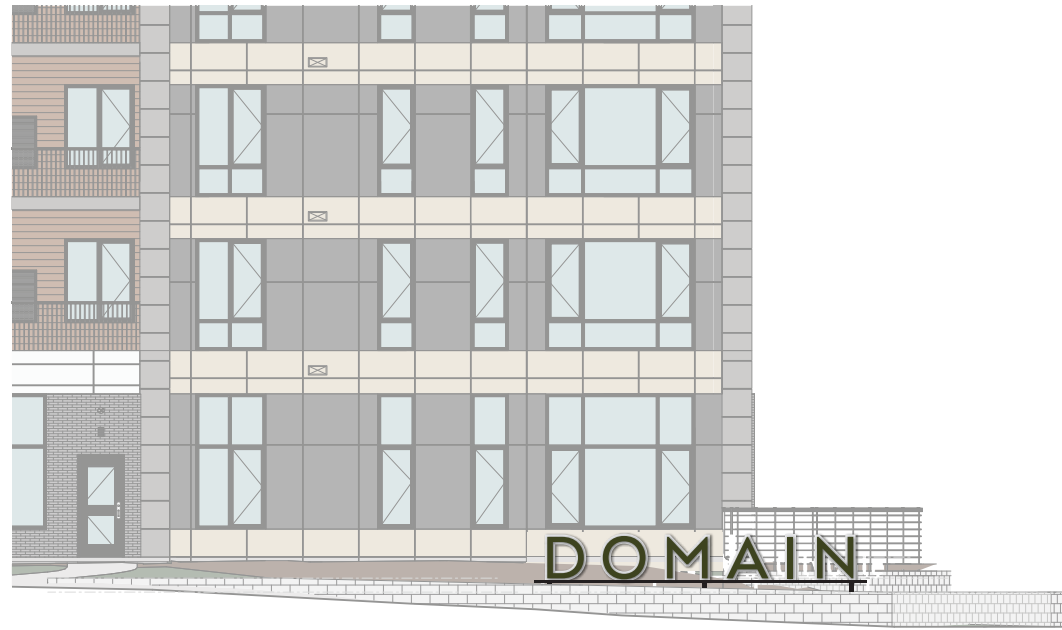
- Lighting: LED
- Voltage: [TBD]
- Description: Back-Lit [Remote]
- Face Color: Paint Dark Green [TBD]
- Return Color: Paint Dark Green [TBD]
- Installation: Stand-off 2 1/2" from Backer

[B] - BACKER PANEL

- Material: Aluminum
- Color: Paint Light Gray [TBD]
- Installation: Freestanding Base

[C] - BASE

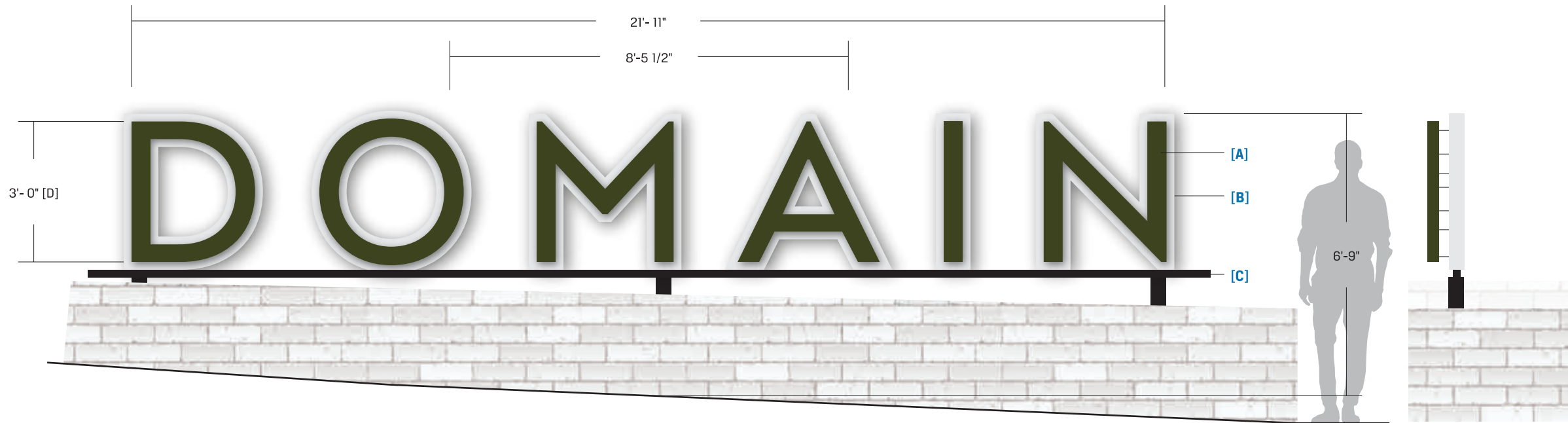
- Material: Steel Tube
- Color: Paint Black



Proposed Location [NTS]



Proposed Night View [NTS]



Side View

This document is owned by and the information contained in it is proprietary to Poblocki Sign Company, LLC. By receipt hereof, the holder agrees not to use the information, disclose it to any third party or reproduce this document without the prior written consent of Poblocki Sign Company, LLC. Holder also agrees to immediately return this document upon request by Poblocki Sign Company, LLC.

This document represents only an approximation of material colors specified. Actual product colors may vary from this print or digital image.

Project

Domain at CityGate

Naperville, IL

Scale: 3/8"=1'

Original Page Size: 11" x 17"

Notes

- SURVEY REQUIRED**
- VERIFY COLORS**

Revisions

REV	DESCRIPTION	BY	DATE
01	Remove logo	iH	3.18.22
02	Add CITYGATE dim	iH	7.1.22
03	Add middle dims	iH	7.12.22
04	Rmv CITYGATE	iH	7.20.22

Rep.: Katie Conroy

Drawn By: Israel Hill

Orig. Date: 03/02/22

Sign Loc. No.

MON-01

D/F Monument

Sign. Type

89143

OPP - Project - Job No.

C04

Design

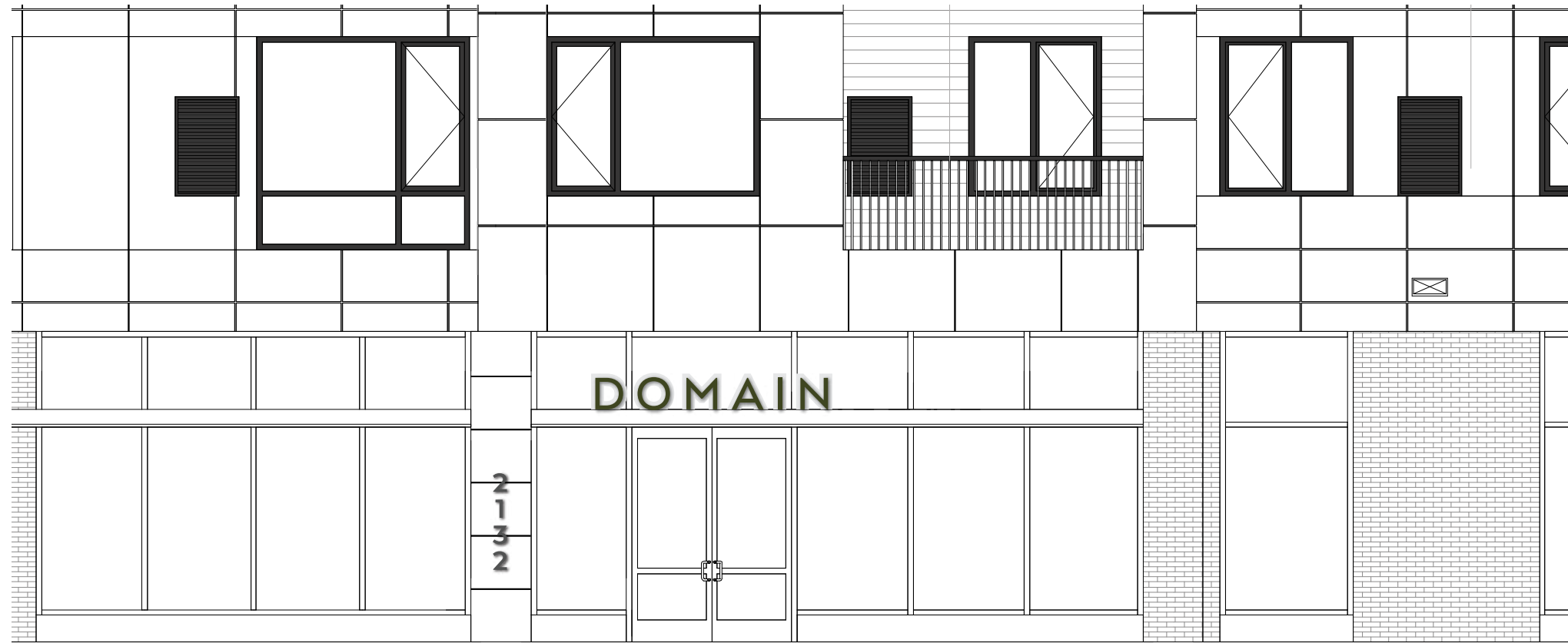
SIGN SPECIFICATIONS

[A] - ILLUMINATED LETTERS

Lighting: LED
 Voltage: [TBD]
 Description: Back-Lit [Remote]
 Face Color: Paint Dark Green [TBD]
 Return Color: Paint Dark Gren [TBD]
 Installation: Stand-off 2 1/2" from Backer

[B] - BACKER PANEL

Material: Aluminum
 Color: Paint Light Gray [TBD] - Suede Finish
 Installation: Mount to Top of Entrance
 Canopy



proposed west elevation [NTS]



EXHIBIT C

This document is owned by and the information contained in it is proprietary to Poblocki Sign Company, LLC. By receipt hereof, the holder agrees not to use the information, disclose it to any third party or reproduce this document without the prior written consent of Poblocki Sign Company, LLC. Holder also agrees to immediately return this document upon request by Poblocki Sign Company, LLC.

This document represents only an approximation of material colors specified. Actual product colors may vary from this print or digital image.

Project

Domain at CityGate
 Naperville, IL

Scale: 1/2"=1'

Original Page Size: 11" x 17"

Notes

.

SURVEY REQUIRED
VERIFY COLORS

Revisions

REV	DESCRIPTION	BY	DATE
.			

Rep.: Katie Conroy

Drawn By: Israel Hill

Orig. Date: 03/02/22

Sign Loc. No. .

LL-02

Lit Letters

Sign. Type

89143

OPP - Project - Job No.

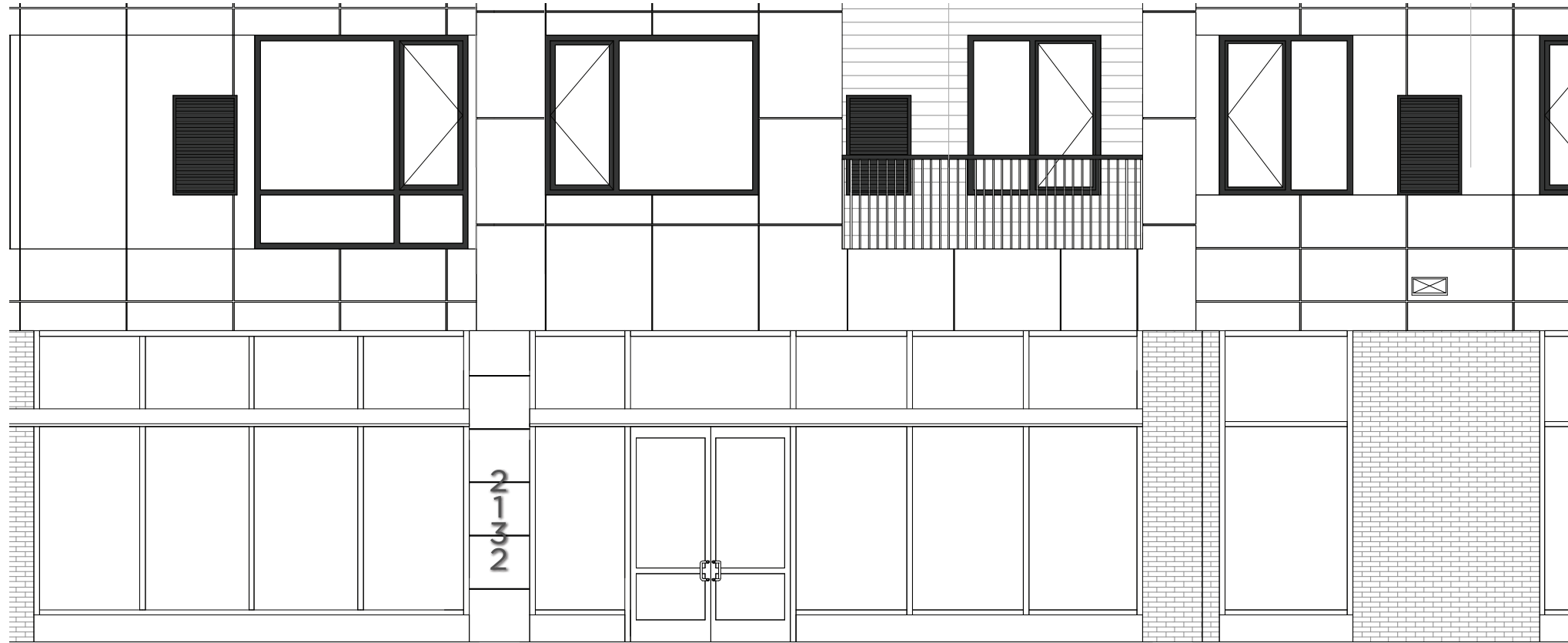
C02

Design

SIGN SPECIFICATIONS

[A] - NON-ILLUMINATED LETTERS

Description: FCO
Material: Aluminum
Depth: 1/4"
Color: Paint Dark Gray [TBD]
Installation: Stud Mount Flush



proposed west elevation [NTS]

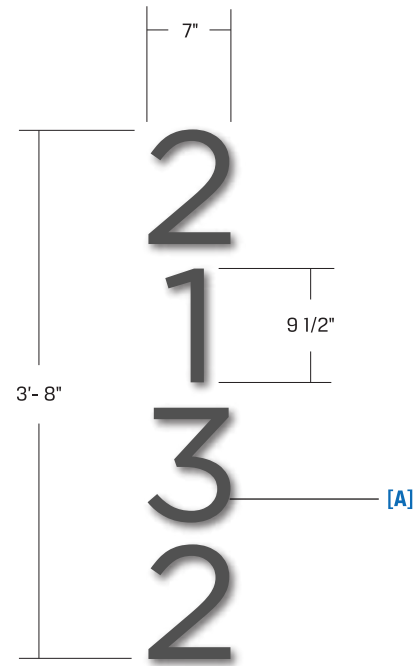


EXHIBIT C



922 S. 70th St., Milwaukee, WI 53214
 414.453.4010 • www.poblocki.com

This document is owned by and the information contained in it is proprietary to Poblocki Sign Company, LLC. By receipt hereof, the holder agrees not to use the information, disclose it to any third party or reproduce this document without the prior written consent of Poblocki Sign Company, LLC. Holder also agrees to immediately return this document upon request by Poblocki Sign Company, LLC.

This document represents only an approximation of material colors specified. Actual product colors may vary from this print or digital image.

Project

Domain at CityGate

Naperville, IL

Scale: 3/4"=1'

Original Page Size: 11" x 17"

Notes

.

SURVEY REQUIRED

VERIFY COLORS

Revisions

REV	DESCRIPTION	BY	DATE
01	fco	RJE	06.25.21

Rep.: Katie Conroy

Drawn By: Ron Erickson Orig. Date: 06/16/20

Sign Loc. No. .

NL-01

Non-Lit Letters

Sign. Type

89143

OPP - Project - Job No.

C01

Design

SIGN SPECIFICATIONS



922 S. 70th St., Milwaukee, WI 53214
414.453.4010 • www.poblocki.com

This document is owned by and the information contained in it is proprietary to Poblocki Sign Company, LLC. By receipt hereof, the holder agrees not to use the information, disclose it to any third party or reproduce this document without the prior written consent of Poblocki Sign Company, LLC. Holder also agrees to immediately return this document upon request by Poblocki Sign Company, LLC.

This document represents only an approximation of material colors specified. Actual product colors may vary from this print or digital image.

Project

Domain at CityGate

Naperville, IL

Scale: 1"=1'

Original Page Size: 11" x 17"

Notes

SURVEY REQUIRED

VERIFY COLORS

Revisions

REV	DESCRIPTION	BY	DATE
01	Update design	iH	3.30.22
02	Rmv CITYGATE	iH	7.20.22
03	Reduce to 8 sq.ft.	iH	8.11.22

Rep.: Katie Conroy

Drawn By: Israel Hill

Orig. Date: 03/02/22

Sign Loc. No. **various_north**

CAB-01

D/F Blade Cabinet

Sign. Type

89143

OPP - Project - Job No.

C03

Design



proposed North elevation locations [NTS]

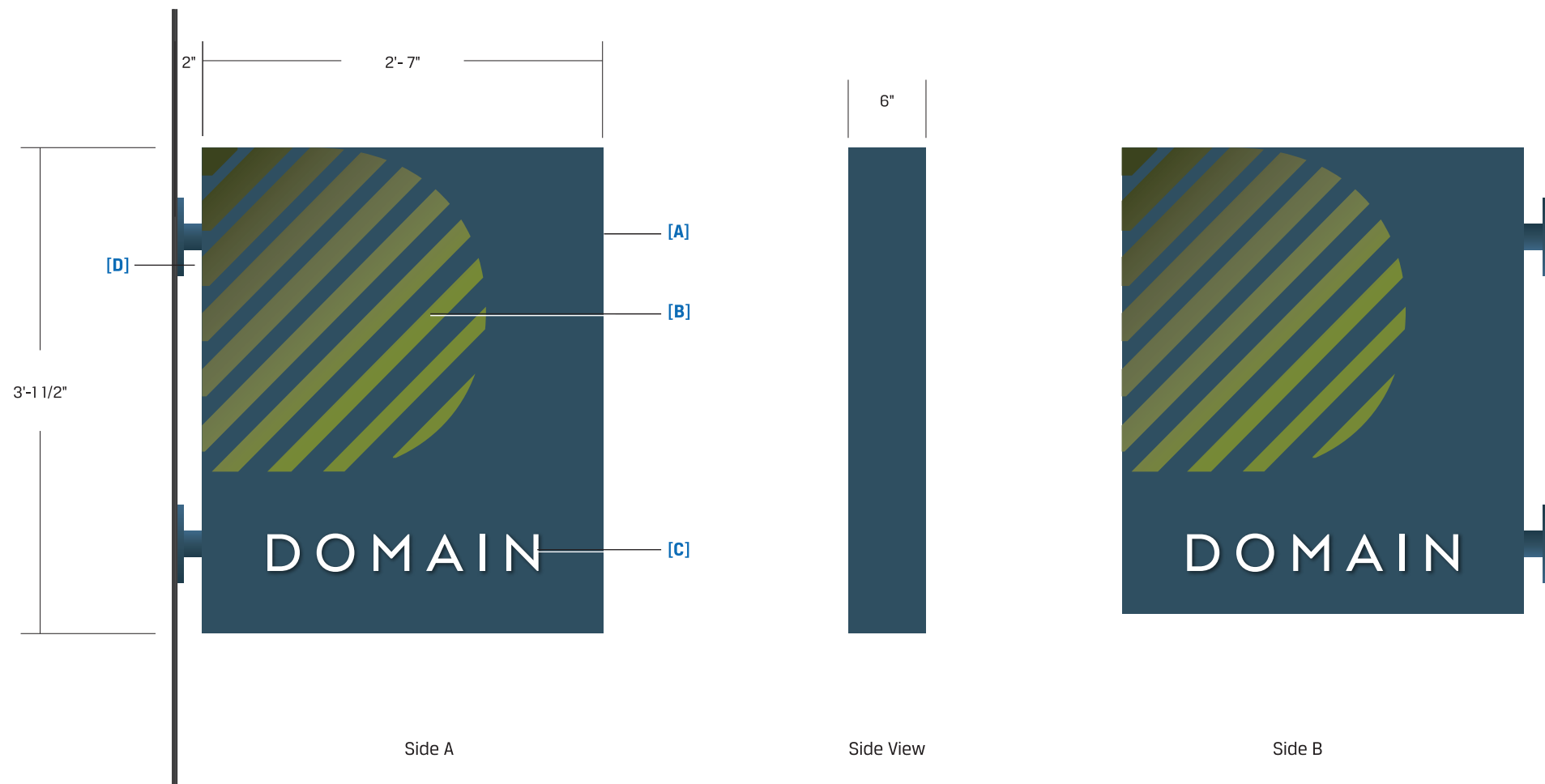


EXHIBIT C

[A] - CABINET

Lighting: Non-Lit

Material: Aluminum

Face Color: Paint Dark Blue [TBD]

Cabinet Color: Paint Dark Blue [TBD]

Installation: Projecting

[B] - GRAPHICS

Material: Vinyl

Color: Digital Print Gradient

[C] - GRAPHICS

Material: 1/4" Aluminum FCO

Color: Painted Green [TBD]

[D] - MOUNTING

Material: Aluminum Tube

Color: Paint Dark Blue [TBD]

SIGN SPECIFICATIONS

This document is owned by and the information contained in it is proprietary to Poblocki Sign Company, LLC. By receipt hereof, the holder agrees not to use the information, disclose it to any third party or reproduce this document without the prior written consent of Poblocki Sign Company, LLC. Holder also agrees to immediately return this document upon request by Poblocki Sign Company, LLC.

This document represents only an approximation of material colors specified. Actual product colors may vary from this print or digital image.

Project

Domain at CityGate

Naperville, IL

Scale: 1"=1'

Original Page Size: 11" x 17"

Notes

SURVEY REQUIRED

VERIFY COLORS

Revisions

REV	DESCRIPTION	BY	DATE
01	Update design	iH	3.30.22
02	Rmv CITYGATE	iH	7.20.22
03	Reduce to 8 sq.ft.	iH	8.11.22

Rep.: Katie Conroy

Drawn By: Israel Hill

Orig. Date: 03/02/22

Sign Loc. No. **various_west**

CAB-01

D/F Blade Cabinet

Sign. Type

89143

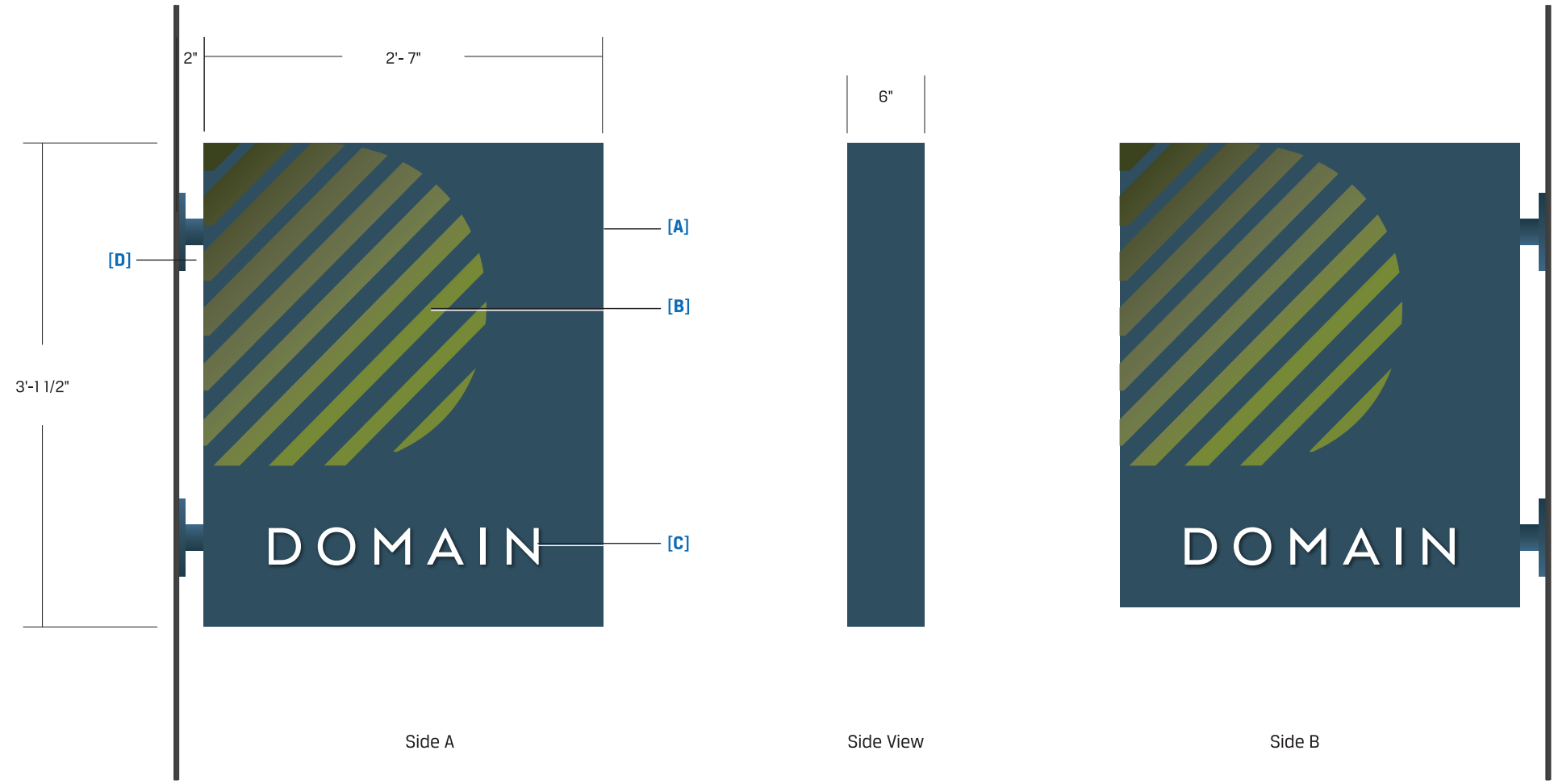
OPP - Project - Job No.

C03

Design



proposed West elevation locations [NTS]



Side A

Side View

Side B

EXHIBIT C

[A] - CABINET
Lighting: Non-Lit
Material: Aluminum
Face Color: Paint Dark Blue [TBD]
Cabinet Color: Paint Dark Blue [TBD]
Installation: Projecting

[B] - GRAPHICS
Material: Vinyl
Color: Digital Print Gradient

[C] - GRAPHICS
Material: 1/4" Aluminum FCO
Color: Painted Green [TBD]

[D] - MOUNTING
Material: Aluminum Tube
Color: Paint Dark Blue [TBD]

SIGN SPECIFICATIONS

This document is owned by and the information contained in it is proprietary to Poblocki Sign Company, LLC. By receipt hereof, the holder agrees not to use the information, disclose it to any third party or reproduce this document without the prior written consent of Poblocki Sign Company, LLC. Holder also agrees to immediately return this document upon request by Poblocki Sign Company, LLC.

This document represents only an approximation of material colors specified. Actual product colors may vary from this print or digital image.

Project

Domain at CityGate

Naperville, IL

Scale: 3/4"=1'

Original Page Size: 11" x 17"

Notes

.

SURVEY REQUIRED

VERIFY COLORS

Revisions

REV	DESCRIPTION	BY	DATE
01	Update F color	iH	3.18.22
02	Update colors	iH	3.30.22
03	Rmv CITYGATE	iH	7.20.22

Rep.: Katie Conroy

Drawn By: Israel Hill

Orig. Date: 03/02/22

Sign Loc. No. .

PP-01

D/F Post & Panel

Sign. Type

89143

OPP - Project - Job No.

C02

Design

[A] - PANEL

Material: Aluminum

Face Color: Paint Dark Blue [TBD] with GLOSSY striped logo watermark

Backside Color: Paint Dark Blue [TBD]

[B] - GRAPHICS

Material: Digital Print

Color: Gradient Greens

[C] - GRAPHICS

Material: Vinyl

Color: White

[D] - GRAPHICS

Material: Vinyl

Color: White

[E] - GRAPHICS

Material: Vinyl

Color: White

[F] - POST

Material: Aluminum

Shape: Square

Size: 6" x 12" and 6" x 6"

Color: Paint Slate Grey PMS 424c

Installation: Direct Bury

[G] - BASE

Material: Aluminum

Color: Paint Dark Blue [TBD]



Plan View



Side B

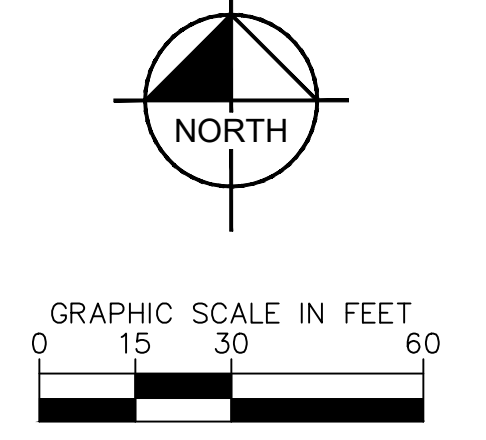
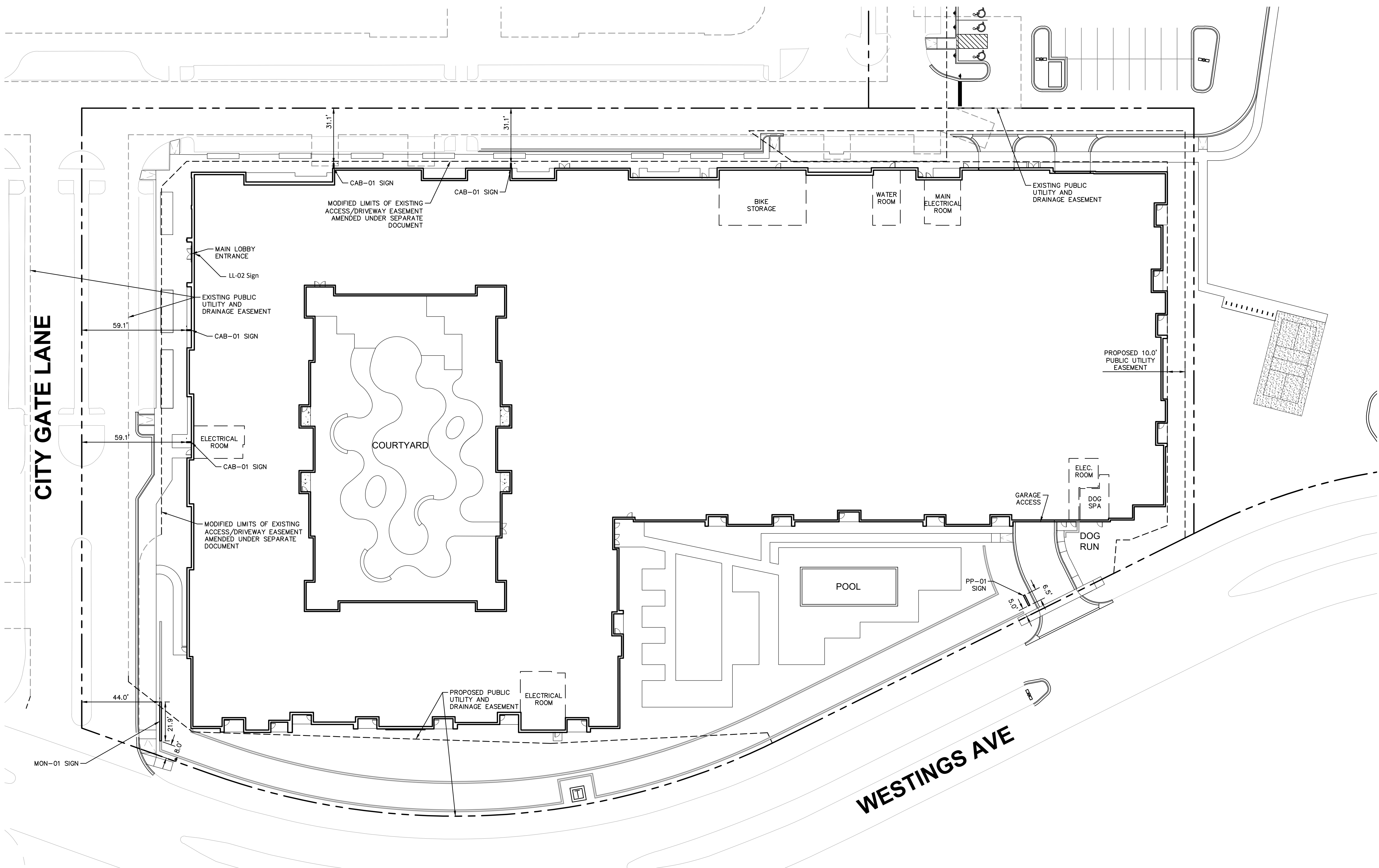


Side A



Side View

Drawing name: K:\GIS_DETA\168709000_Lincoln_Proj_Citygate_Centre_Nogerville_IL\2_Design\CAD_Exhibits\2022-0627_Sign_Exhibit.dwg Layout1 Aug 11, 2022 3:15pm by: TaylorEichboch
 This document, together with the concepts and designs presented herein, as an instrument of service, is intended only for the specific purpose and client for which it was prepared. Reuse of and improper reliance on this document without written authorization and adoption by Kimley-Horn and Associates, Inc. shall be without liability to Kimley-Horn and Associates, Inc.



No.	REVISIONS	DATE	BY

Kimley»Horn
© 2022 KIMLEY-HORN AND ASSOCIATES, INC.
 4201 WINFIELD ROAD, SUITE 600
 NAPERVILLE, IL 60563
 PHONE: 630-487-5500
 WWW.KIMLEY-HORN.COM
 SCALE: AS NOTED
 DESIGNED BY: TRE
 DRAWN BY: RM
 CHECKED BY: WAW

SIGNAGE EXHIBIT

CITYGATE CENTRE III
 NE CORNER OF CITY GATE LANE AND WESTINGS AVENUE

ORIGINAL ISSUE: 08/11/2022
 KHA PROJECT NO. 168709000
 SHEET NUMBER

EX