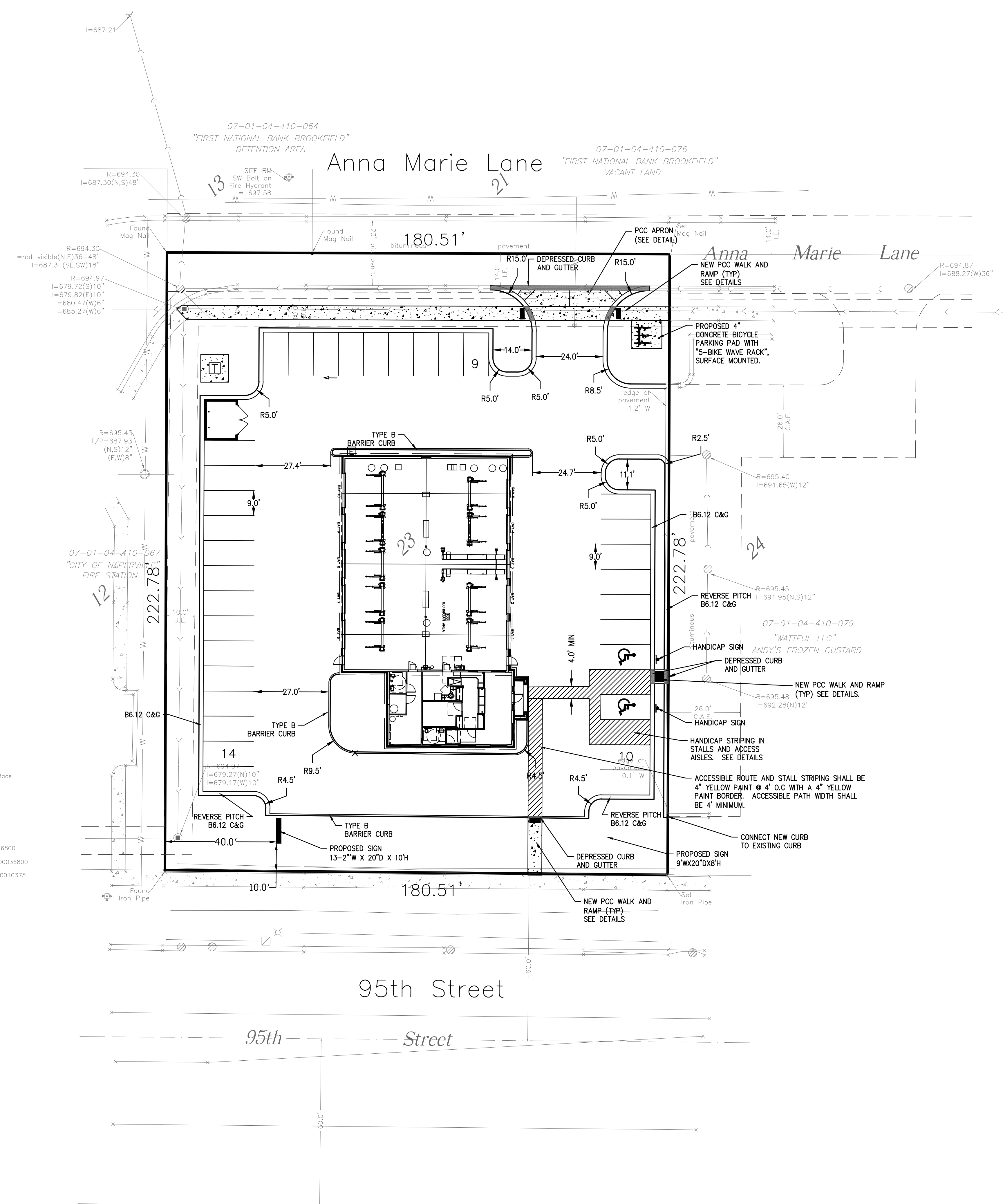


- LEGEND**
- Right-of-Way line
 - Found Survey Marker
 - Set Iron Pipe
 - Tree and Size
 - Water Valve
 - Water Valve Vault
 - Fire Hydrant
 - Storm Sewer Inlet
 - Manhole
 - Utility Pedestal
 - Sign Post
 - Electric Transformer Pad
 - Light Pole
 - Irrigation Control Valve
 - Gas Meter
 - Electric Meter
 - Air Conditioning Unit
 - △ Telecommunication Network Interface
 - Water Buffalo Box
 - Silt Fence
 - Underground Sanitary
 - Underground Water
 - Underground Storm
 - B.L. Building Line per Doc. 200600036800
 - V.E. Village Easement per Doc. 200600036800
 - U.E. Utility Easement per Doc. 200900010375



PARKING SUMMARY
 CODE REQUIREMENT (ORD 80-5, 1-21-1980)
 AUTOMOTIVE SERVICE USE
 4.5 SPACES PER 1,000 SQFT OF GROSS BUILDING AREA
 GROSS SQUARE FOOTAGE=6,034 SQFT
 PARKING REQUIRED = (6,034/1,000) *4.5 = 27.15
 PARKING REQUIRED = 27 SPACES

HANDICAPPED PARKING REQUIRED
 26-50 STANDARD SPACES REQUIRES 2 HANDICAPPED SPACES

PARKING PROVIDED
 33 STANDARD SPACES PROVIDED
 2 HANDICAPPED SPACES PROVIDED

REVISIONS:

01-26-18	PER CITY COMMENTS
07-26-18	PER CITY COMMENTS

JOB NO. 076-xxx
 FIELD WORK
 DRAWN BY: ERO
 CHECKED BY: REK
 COMPLETED: 10/17/17

PREPARED FOR:
CHRISTIAN BROTHERS AUTOMOTIVE CORP.
 17725 KATY FREEWAY, STE. 200
 HOUSTON, TEXAS 77094
 PH: (281) 675-6105

Bollinger, Iach & Associates, Inc.
 CONSULTING ENGINEERS
 333 PIERCE ROAD SUITE 200 TASCALA, IL 60143
 P: (630) 438-6400 F: (630) 438-6444 www.bollingerlach.com
 ILLINOIS • INDIANA • WISCONSIN

SITE LAYOUT PLAN
 CHRISTIAN BROTHERS AUTOMOTIVE CORP.
 CITY OF NAPERVILLE