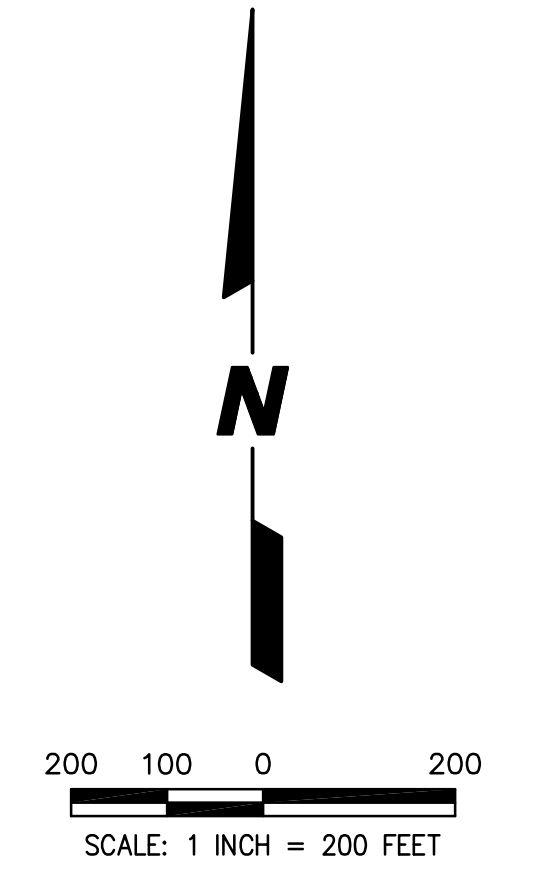
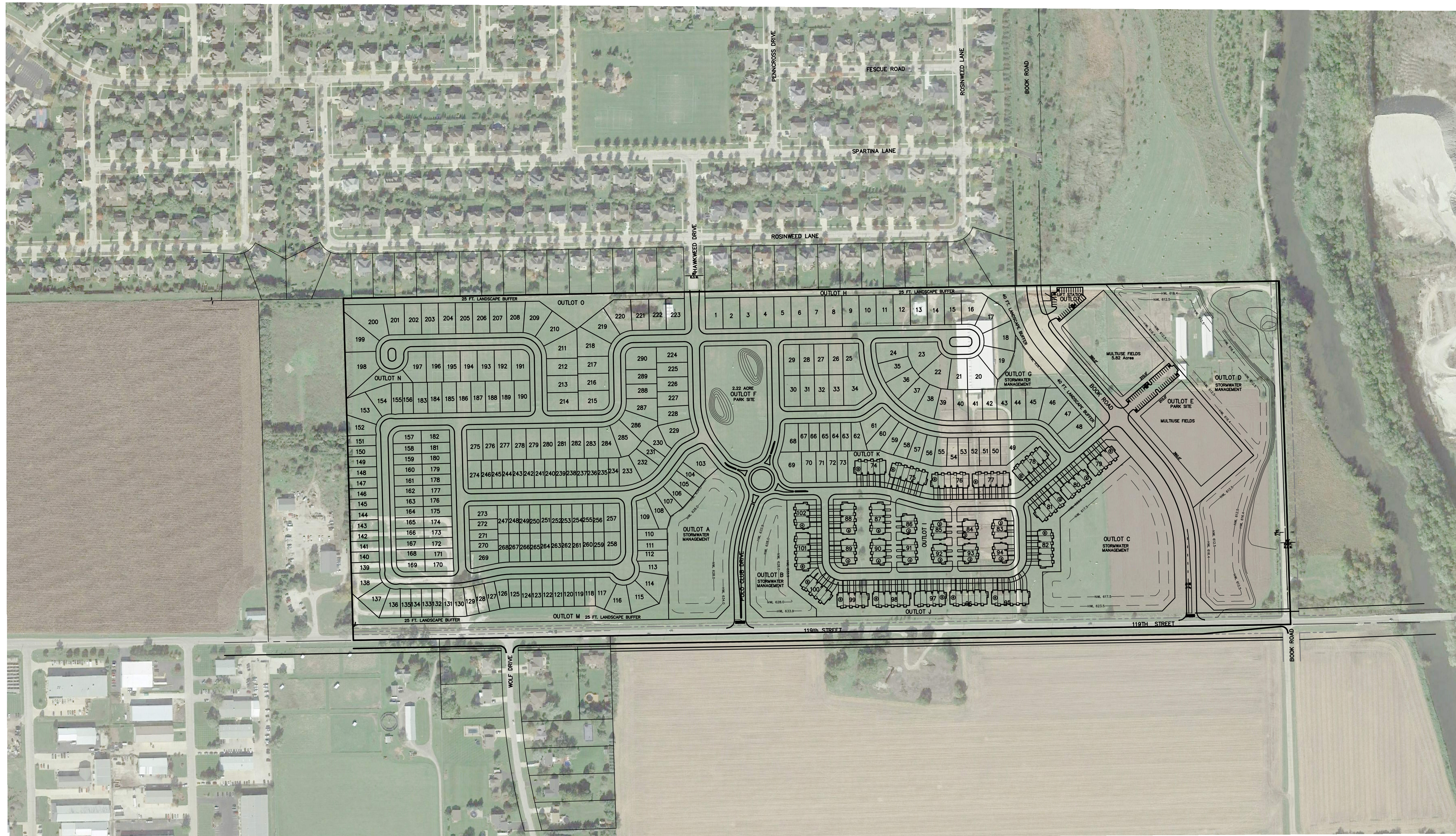


SITE PLAN FOR **POLO CLUB**

NAPERVILLE, ILLINOIS



SITE DATA	
A. TOTAL AREA	110.57 AC. ±
B. UNITS	
ESTATES (66' x 120') LOTS	57 UNITS
MEADOWS (56' x 120') LOTS	56 UNITS
SPRINGS (41' x 110') LOTS	148 UNITS
TOWNHOMES	136 UNITS
TOTAL	397 UNITS
C. GROSS DENSITY	3.89

PREPARED FOR:
PULTE HOME COMPANY, LLC
 1900 E. GOLF ROAD, SUITE 300
 SCHAUMBURG, IL 60173
 (847) 230-5400

PREPARED BY:
CEMCON, Ltd.
 Consulting Engineers, Land Surveyors & Planners
 2280 White Oak Circle, Suite 100
 Aurora, Illinois 60502-9675
 PH: 630.862.2100 FAX: 630.862.2199
 E-Mail: cadd@cemcon.com Website: www.cemcon.com

DISC NO.: 402151 FILE NAME: SITE PLAN
 DRAWN BY: PRP/LAL FLD. BK. / PG. NO.: BK./PG.
 COMPLETION DATE: 01-16-23 JOB NO.: 402.151
 XREF : PROJECT MANAGER : CRM

PLOT FILE CREATED: 1/20/2023 BY: LESLIE LUNDGREN; DRAWING PATH: P:\402151\DWG\402151\PRELIMINARY\SITEPLAN.DWG