

NORTH

BASIS OF BEARINGS:  
NSRS (2011)  
ILLINOIS STATE PLANE  
- EAST ZONE

### AERIAL EXHIBITS 525 EAST HILLSIDE ROAD

LEGAL DESCRIPTION:

LOT 13 IN BLOCK 2 IN MOSER HIGHLANDS, BEING A SUBDIVISION OF PART OF SECTION 19, TOWNSHIP 38 NORTH, RANGE 10, EAST OF THE THIRD PRINCIPAL MERIDIAN, ACCORDING TO THE PLAT THEREOF RECORDED AUGUST 27, 1954 AS DOCUMENT 728128, IN DUPAGE COUNTY, ILLINOIS.

NO	DATE	DESCRIPTION

**CEC**  
**Civil & Environmental Consultants, Inc.**  
1230 East Diehl Road, Suite 200 - Naperville, IL 60563  
630-963-6026 • 877-963-6026  
www.cecinc.com

**525 EAST HILLSIDE ROAD  
NAPERVILLE, ILLINOIS 60540**

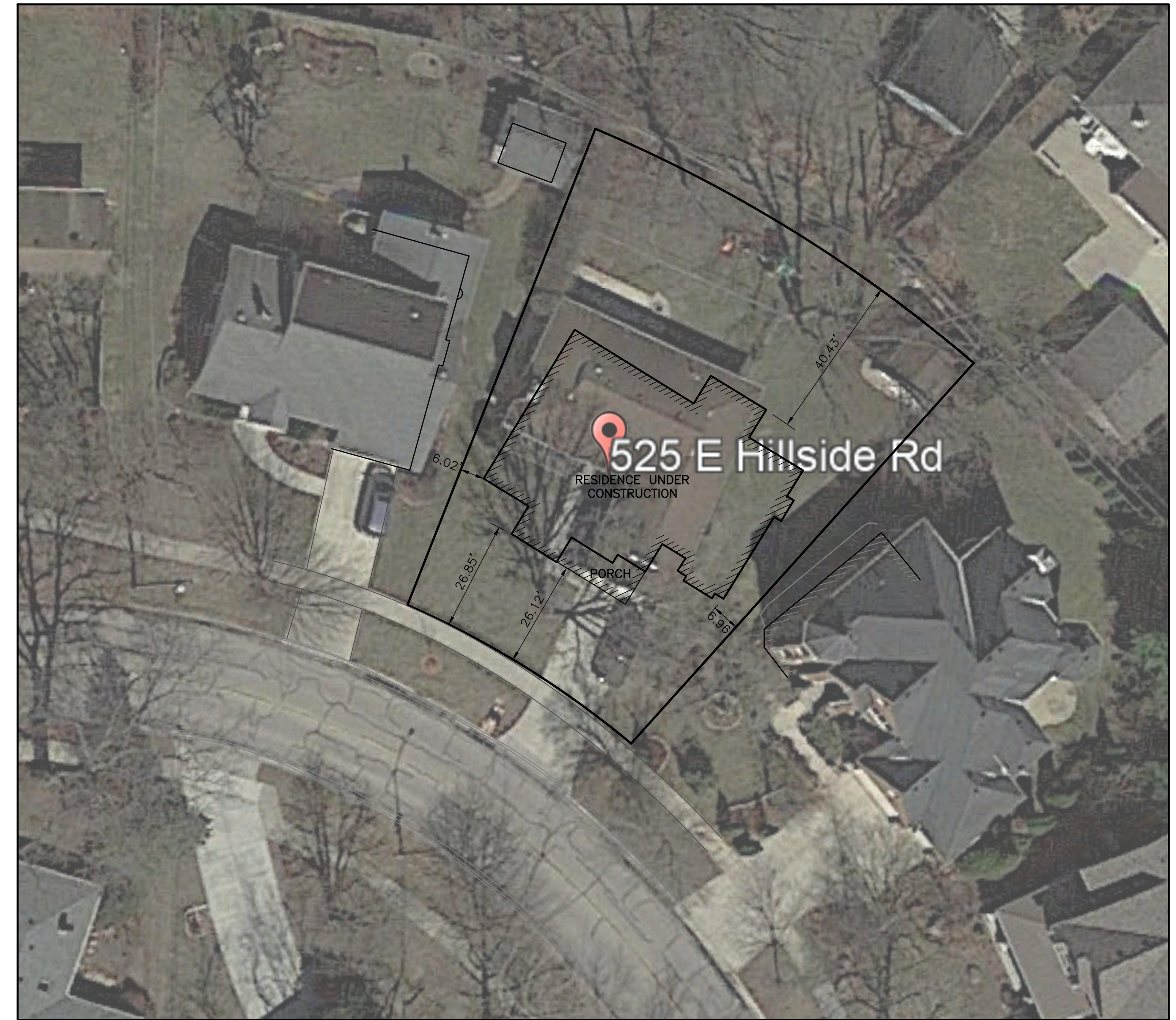
**AERIAL EXHIBITS**

DRAWING NO.:  
**SV-01**  
SHEET 1 OF 1

DATE: DECEMBER 13, 2022  
DRAWN BY: MAJ  
DATE SCALE: AS NOTED  
CHECKED BY: JGC  
PROJECT NO: 323-897  
APPROVED BY: JGC



**AERIAL EXHIBIT - 30 SCALE**



**AERIAL EXHIBIT - 20 SCALE**

