

WEST FACADE:	3012 S.F.	100%
STONE:	1068 S.F.	35.5%
ALUM STOREFRONT	1034 S.F.	34%
BRICK MSRY:	910 S.F.	30.5%
NORTH FACADE:	1394 S.F.	100%
STONE:	698 S.F.	50%
ALUM STOREFRONT	236 S.F.	17%
STEEL DOORS:	21 S.F.	1.5%
BRICK MSRY:	439 S.F.	31.5%
CANOPY:	53 S.F.	3.8%
SOUTH FACADE:	1575 S.F.	100%
STONE:	771 S.F.	49%
ALUM STOREFRONT	201 S.F.	12.5%
BRICK MSRY:	603 S.F.	38.5%
CANOPY:	83 S.F.	5.2%
EAST FACADE:	2505 S.F.	100%
STONE:	589 S.F.	23%
ALUM STOREFRONT	65 S.F.	3%
STEEL DOORS:	105 S.F.	4%
BRICK MSRY:	1746 S.F.	70%
CANOPY:	219 S.F.	8.7%

COLOR SCHEDULE
 BRICK MSRY = LIGHT BUFF TAN
 STONE MEDIUM BROWN
 STOREFRONT MEDIUM BRONZE
 ALUM CANOPY MEDIUM BRONZE
 NOTE: CANOPY IS INSTALLED OVER VISABLE BRICK >100%

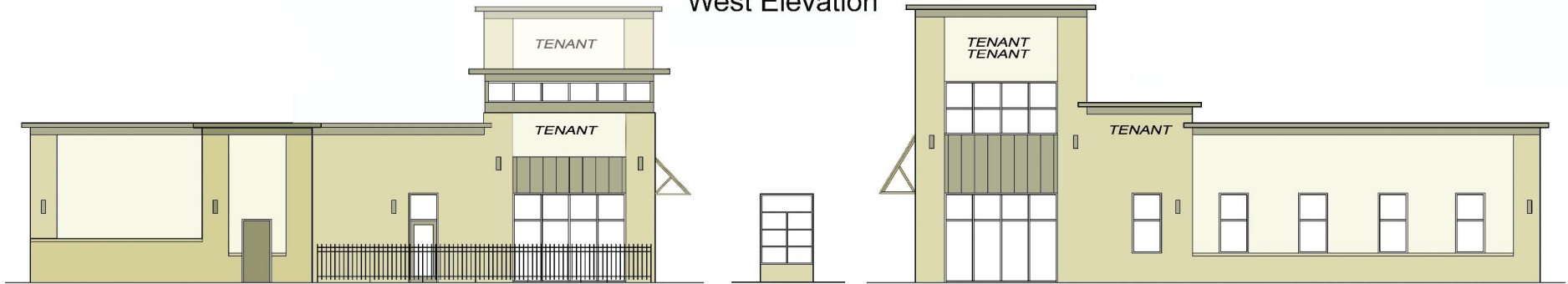
Project:
 Design Point
 1336 No. Rt 59
 Naperville, Illinois

Sheet:
 Building Elevations

JOB NUMBER	22106
DATE	.
REVISIONS	.
	11.07.22
	12.01.22
	12.19.22



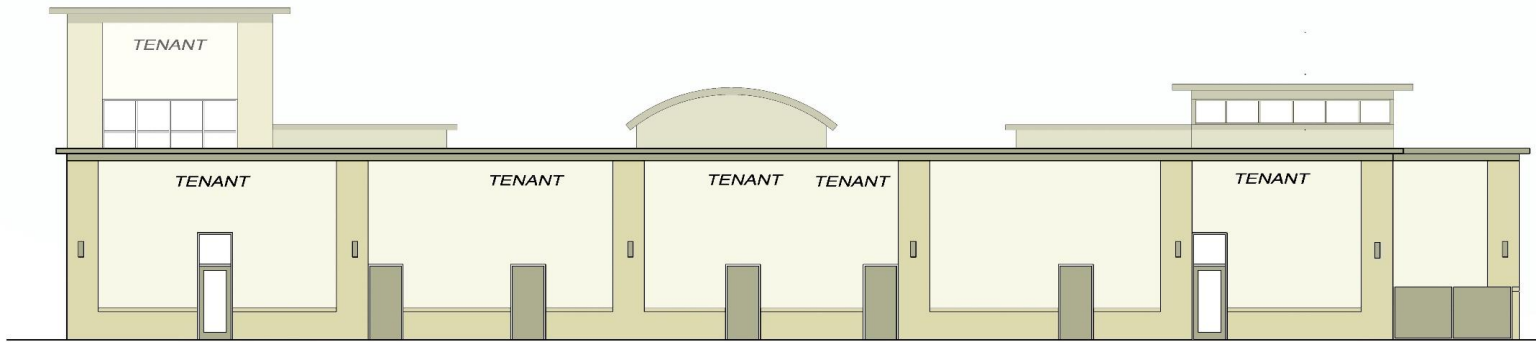
West Elevation



North Elevation

Sign Elevation

South Elevation



East Elevation

WEST FACADE:	3012 S.F.	100%
STONE:	1068 S.F.	35.5%
ALUM STOREFRONT:	1034 S.F.	34%
BRICK MSRY:	910 S.F.	30.5%
NORTH FACADE:	1394 S.F.	100%
STONE:	698 S.F.	50%
ALUM STOREFRONT:	236 S.F.	17%
STEEL DOORS:	21 S.F.	1.5%
BRICK MSRY:	439 S.F.	31.5%
CANOPY:	53 S.F.	3.8%
SOUTH FACADE:	1575 S.F.	100%
STONE:	771 S.F.	49%
ALUM STOREFRONT:	201 S.F.	12.5%
BRICK MSRY:	603 S.F.	38.5%
CANOPY:	83 S.F.	5.2%
EAST FACADE:	2905 S.F.	100%
STONE:	589 S.F.	23%
ALUM STOREFRONT:	65 S.F.	3%
STEEL DOORS:	109 S.F.	4%
BRICK MSRY:	1746 S.F.	70%
CANOPY:	219 S.F.	8.7%
COLOR SCHEDULE		
BRICK MSRY = LIGHT BUFF TAN		
STONE MEDIUM BROWN		
STOREFRONT MEDIUM BRONZE		
ALUM CANOPY MEDIUM BRONZE		
NOTE: CANOPY IS INSTALLED OVER VISIBLE BRICK >100%		

DESIGN POINTE
1336 North Rt 59 N aperville, Illinois