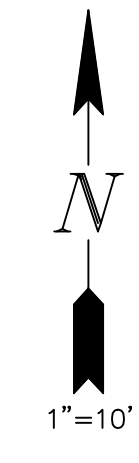
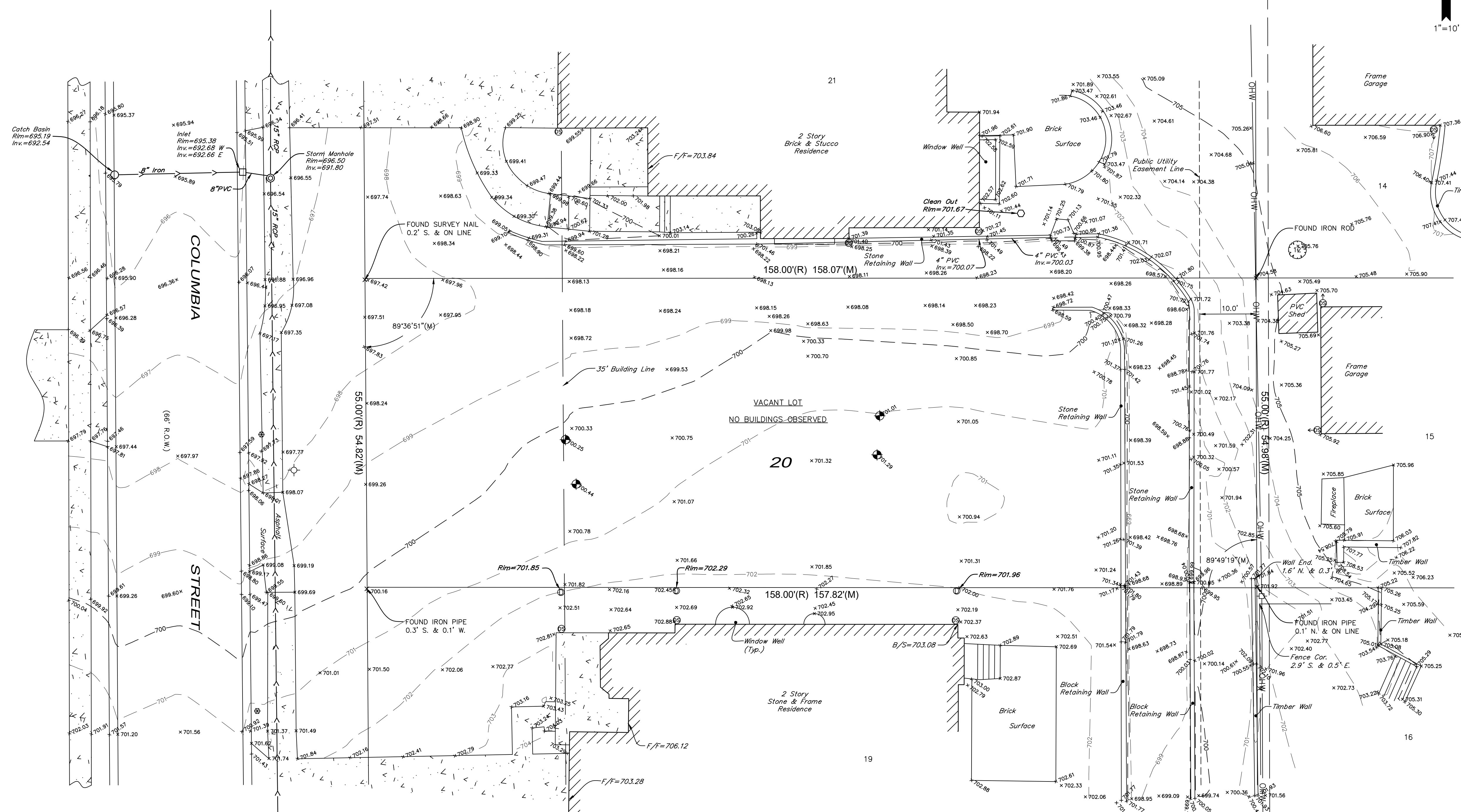


EXISTING CONDITIONS & DEMOLITION PLAN

OF
 LOT 12 IN EAST ADDITION, BEING A SUBDIVISION OF PART OF THE SOUTHWEST 1/4 OF SECTION 7
 AND OF THE NORTH 1/2 OF SECTION 18, TOWNSHIP 38 NORTH, RANGE 10, EAST OF THE THIRD
 PRINCIPAL MERIDIAN, ACCORDING TO THE PLAT THEREOF RECORDED OCTOBER 16, 1950 AS
 DOCUMENT 607307, IN DU PAGE COUNTY, ILLINOIS.



- LEGEND**
- 689 — EXISTING GRADE
 - 689 — PROPOSED GRADE
 - — — — — STORM SEWER
 - — — — — SANITARY SEWER
 - — — — — WATER MAIN
 - 734 26 EXISTING SPOT GRADE
 - ⊗ 689.0 PROPOSED SPOT GRADE
 - — — — — SILT / CONSTRUCTION FENCE
 - DS DOWNSPOUT
 - STORM SEWER MANHOLE
 - INLET
 - SANITARY SEWER MANHOLE
 - ELECTRIC METER
 - GAS METER
 - FIRE HYDRANT
 - UTILITY POLE
 - CONIFEROUS TREE
 - DECIDUOUS TREE
 - WATER VALVE
 - CORRUGATED METAL PIPE
 - UTILITY POLE
 - B-BOX
 - LIGHT ON GROUND OR WALL
 - WOOD FENCE



X EXISTING TREES TO BE REMOVED

	KOZIOL ENGINEERING SERVICES Professional Engineers 1621 OGDEN AVE. Lisle, IL 60532 630/435-8686 CIVIL / CONSULTING ENGINEERS			
	SCALE	REV	DATE	PREPARER
	1"=10'	0	02/01/20	JEK
	20101			
476 S. COLUMBIA NAPERVILLE, IL		PAGE		
		2 of 3		