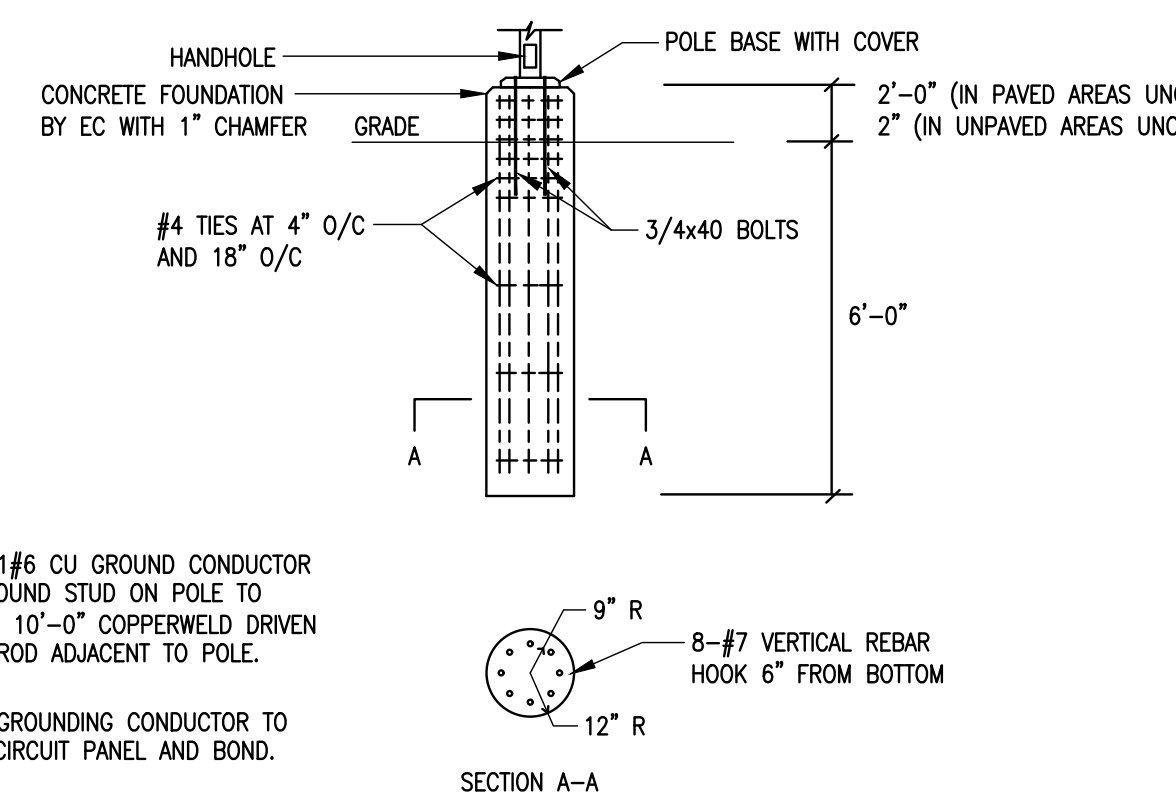


1 SITE ELECTRICAL PLAN
1" = 20'-0"



PROVIDE 1#6 CU GROUND CONDUCTOR FROM GROUND STUD ON POLE TO A 3/4" x 10'-0" COPPERWELD DRIVEN GROUND ROD ADJACENT TO POLE.

PROVIDE GROUNDING CONDUCTOR TO BRANCH CIRCUIT PANEL AND BOND.

Symbol	Tag	Qty	Manufacturer	Description	Mounting Height	Arrangement	Luminaire Lumens	Luminaire Watts	Total Watts	Light Loss Factor
P1	P1	2	EXO	RAR1-160L-70-4K7-4W-U	20'-0"	Single	9335	68.4	136.8	0.800
W1	W1	20	BEACON	TRP1-24L-25-4K7-4F	11'-6"	Single	2721	24.4	488	0.800
W2	W2	17	BEACON	TRP1-24L-25-4K7-2	11'-6"	Single	2757	24.4	414.8	0.800
WS	WS	162	KIM LIGHTING	CY1-15-4K7-1-1-R (DOWNLIGHT ONLY)	7'-9", 11'-6", 18'-4"	Single	1927	17.25	2794.5	0.800

- PLAN NOTES:**
- EXTERIOR LIGHTING SHALL BE FULLY SHIELDED, FACE DIRECTLY DOWN AT 90 DEGREE ANGLE, INCLUDE GLARE CONTROLS, AND OTHERWISE DESIGNED SO AS TO AVOID GLARE ONTO NEIGHBORING RESIDENTIAL PROPERTIES. SHIELDED MEANS THAT ALL BULB/LIGHT SOURCE AND COVER PORTION OF A FIXTURE THAT TRANSMIT LIGHT SHALL NOT EXTEND BEYOND BELOW THE OPAQUE PORTION OF SUCH FIXTURE SO THE BULB/LIGHT SOURCE IS NOT VISIBLE FROM GENERAL SIDE VIEW.
 - IN GENERAL, THE HEIGHT OF EXTERIOR LIGHTING FIXTURES SHALL NOT EXCEED THE PREDOMINANT HEIGHT OF THE PRINCIPAL BUILDING TO WHICH IT RELATES.
 - MOUNTING HEIGHT OF POLE MOUNTED LIGHTS SHALL BE 20'-0" ABOVE GRADE. CONTRACTOR TO VERIFY EXACT LOCATION OF POLE LIGHTS WITH OWNER AND APPROVED SITE LIGHTING PLAN PRIOR TO INSTALLATION.

2 LIGHTING FIXTURE BASE DETAILS
NTS

PROJECT
NEW MULTIFAMILY DEVELOPMENT
NEW BUILDINGS
433-435 W SPRING AVE
NAPERVILLE, IL 60540
FOR

PROJECT NUMBER | 924073

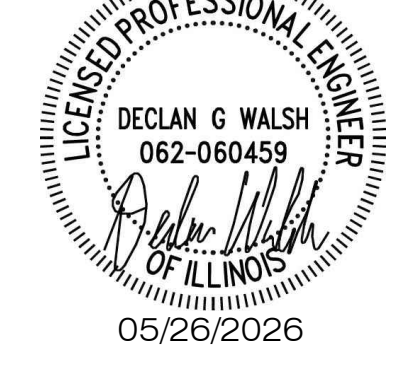
ISSUE
05/26/2026 ISSUED FOR ZONING

RE-ISSUE
09/23/2025 REVISION 1

DESCRIPTION
SITE ELECTRICAL PLAN



EXPIRES: 11/30/2027



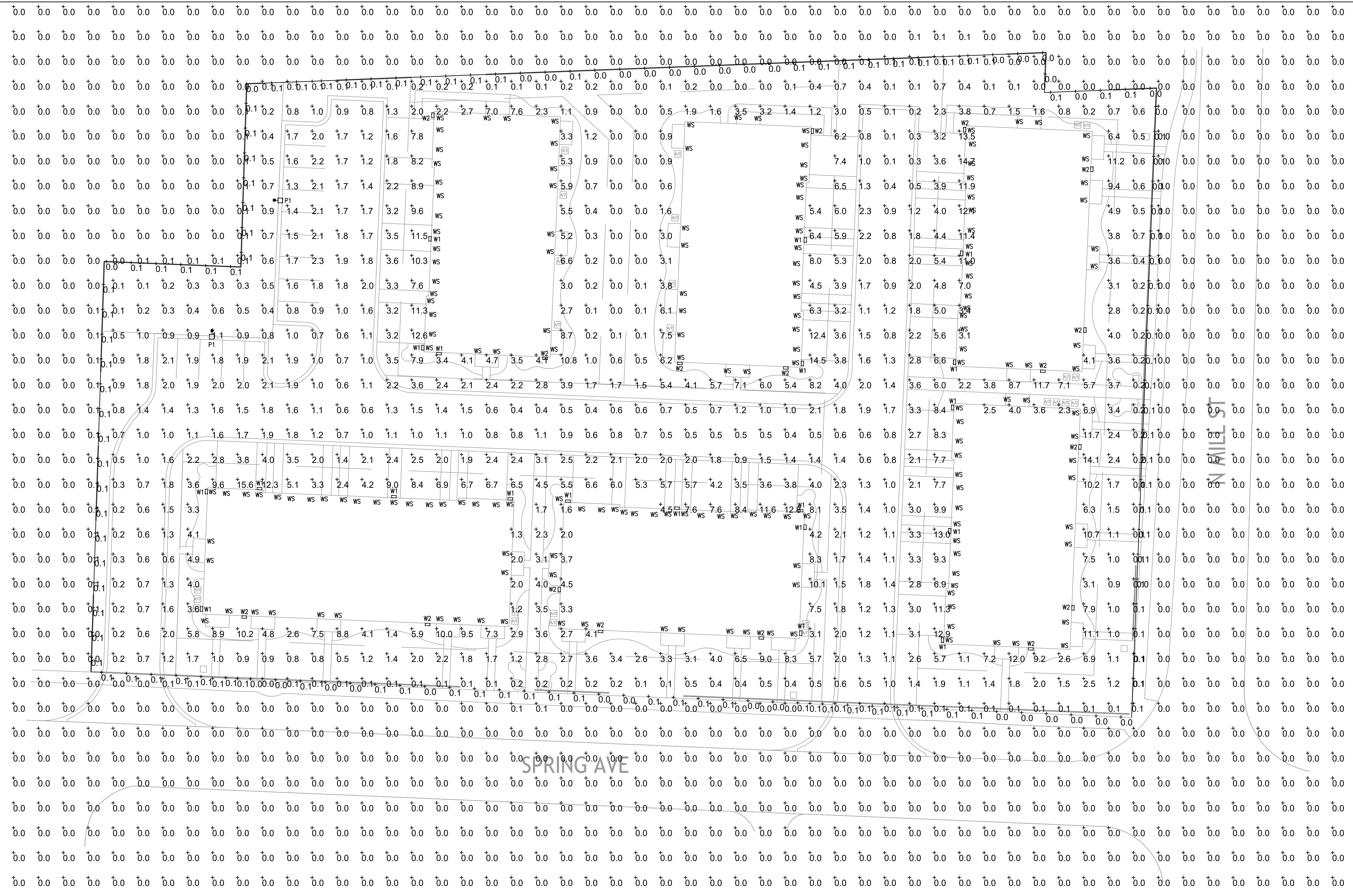
PROJECT
NEW MULTIFAMILY DEVELOPMENT
NEW BUILDINGS
433-435 W SPRING AVE
NAPERVILLE, IL 60540
FOR

PROJECT NUMBER | 924073

ISSUE
05/26/2026 ISSUED FOR ZONING

RE-ISSUE
09/23/2025 REVISION 1

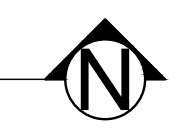
DESCRIPTION
SITE PHOTOMETRIC PLAN



1 SITE PHOTOMETRIC PLAN
1" = 20'-0"

Calculation Summary	Label	CalcType	Units	Avg	Max	Min	Avg/Min	Max/Min
Full Area Calc. Planar	Full Area Calc. Planar	ILLUMINANCE	Fc	0.96	15.6	0.0	N.A.	N.A.
PROPERTY LINE CALC	PROPERTY LINE CALC	ILLUMINANCE	Fc	0.16	0.1	0.0	N.A.	N.A.
DRIVE AREA CALC	DRIVE AREA CALC	ILLUMINANCE	Fc	2.70	15.6	0.1	N.A.	N.A.
PARKING AREA CALC	PARKING AREA CALC	ILLUMINANCE	Fc	1.70	2.3	0.7	2.43	3.29

OWNER AND PREPARER OF PLAN (WALSH MEP DESIGN) CERTIFICATION:
THE EXTERIOR LIGHTING AND PHOTOMETRIC VALUES DEPICTED ON THIS PLAN COMPLY WITH THE REQUIREMENTS OF THE NAPERVILLE MUNICIPAL CODE REGARDING OUTDOOR LIGHTING DESIGN REQUIREMENTS. ONCE THE PLAN IS APPROVED, THE EXTERIOR LIGHTING SYSTEMS OF THE PROPERTY SHALL CONFORM TO THE INFORMATION DEPICTED ON THIS PLAN.



EXO
OUTDOOR LIGHTING
SLING Micro Strike
AREA/SITE/ROAD LIGHTER

FEATURES

- Compact sleek design with multiple LED configurations and simple installation
- The SLING includes a square mounting block for easy pole installation or mast arm option for 2-3/8" OD roadway brackets
- Capable of replacing up to 1000w HID luminaires
- Micro Strike optical distributions of Type 2, 3, 4F, 4W or 5GW
- Tool-less entry option for easy installation and maintenance
- 3G rated for high vibration applications including bridges and overpasses



CONTROL TECHNOLOGY



SPECIFICATIONS

CONSTRUCTION

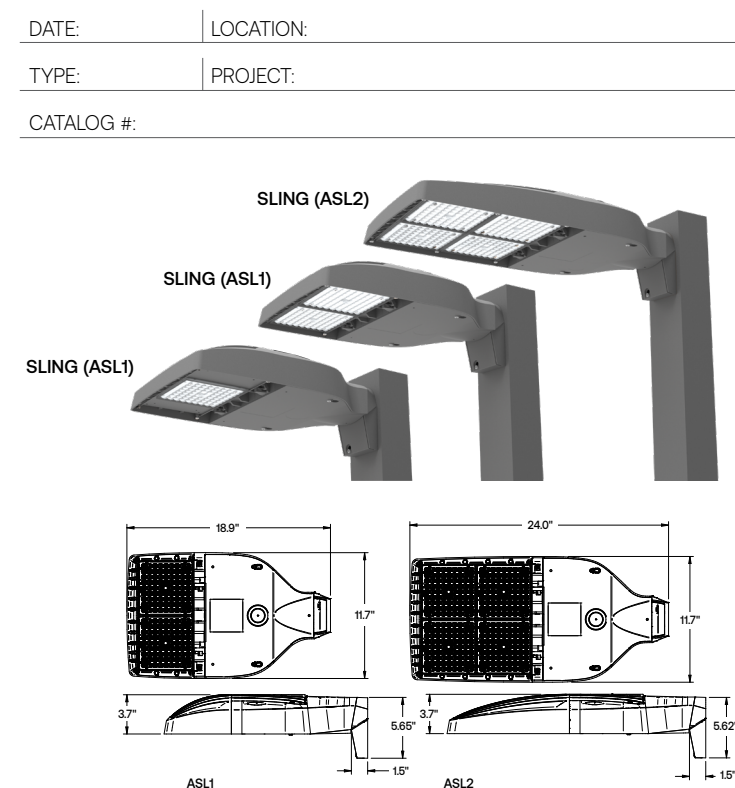
- Die-cast housing with hidden vertical heat fins that are optimal for heat dissipation while keeping a clean smooth outer surface
- Corrosion resistant, die-cast aluminum housing with powder coat paint finish
- Separate optical and electrical compartment for improved thermal management and optimum component operation
- TGIC thermostat polyester powder paint finish applied at nominal 2.5 mil thickness

OPTICS

- Entire optical aperture illuminates to create a larger luminous surface area resulting in a low glare appearance without sacrificing optical performance
- Premium engineered individual acrylic lenses deliver ES Type 2, 3, 4F, 4W and 5GW distributions
- Lens distributions are field rotatable (in 90° increments) or exchangeable for job site fine-tuning
- 3000K-4000K or 5000K (70 CRI) CCT
- 80, 160 or 320 mcd/power LEDs
- 3000K-4000K or 5000K (70 CRI) CCT
- Zero uplight at 0 degrees of tilt
- Field rotatable optics

INSTALLATION

- Tool-less entry to wiring/driver compartment optional
- Arm-mounting works with 52 shell pattern
- Fixture ships with square mounting block for ease of installation
- Mast arm fixture accessory or option available for 2-3/8" OD brackets with vertical tilt of +3° or -3°



	Weight lbs. (kg)	EPA
ASL1	14.47 (6.56)	46R ¹ 0.43m ²
ASL2	17.47 (7.92)	56R ¹ 0.52m ²

ELECTRICAL

- Universal 120-277 VAC or 347-480 VAC input voltage, 50/60 Hz
- Ambient operating temperature -40° C to 40° C
- Drivers have greater than 90% power factor and less than 20% THD
- LED drivers have output power over-voltage, over-current protection and short circuit protection with auto recovery
- Standard 6kV surge protection with optional field replaceable surge protection device provides 20kA and 10kV protection meeting ANSI/IEEE C62.41.2 Category C High and Surge Location Category C3. Automatically takes future off-line for protection when device is consumed

CERTIFICATIONS

- Listed to UL1598 and CSA C22.2#250-24 for wet locations and 40°C ambient temperatures with some Premium Qualified configurations. Not all product variations on this page are DLC Qualified. Refer to <http://www.designlights.org> for the most up-to-date list.
- 3G rated for ANSI C136.31 high vibration applications
- IP65 optical assembly
- Meets IEC recommendations using 3K CCT configuration at 0 degrees of tilt
- This product meets federal procurement law requirements under the Buy American Act (FAR 52.225-9) and Trade Agreements Act (FAR 52.225-11). See Buy America(s) Solutions (link to <https://www.currentlighting.com/resources/america-solutions>)

WARRANTY

- 5 Year warranty

Current

currentlighting.com/exo
© 2024 Current Lighting Solutions, LLC. All rights reserved. Information and specifications subject to change without notice. All values are design or typical values when measured under laboratory conditions.
Page 1 of 12
Rev 12/16/24
EXO_EXO_SLING MicroStrike V2_R10

BEACON
OUTDOOR LIGHTING
GEOPAK SERIES 1
SIZE 1 - TRP1/QSP1/RD1

FEATURES

- GeoPak Series consists of three compact Geometric wall-pack shapes in four popular finishes
- 24 mid-power LEDs create 3115 lumens in AC and 1628 lumens in emergency mode
- Environmentally friendly, long-life Lithium Iron Phosphate battery
- Standard Battery Temperature Range: 0°C to 40°C, Optional Heater: -30°C to 40°C
- Zero uplight distributions



SPECIFICATIONS

CONSTRUCTION

- Housing is made from die-cast aluminum with a hinged back-plate for ease of installation and maintenance
- Powder paint finish provides durability in outdoor environments. Tested to meet 1000 hour salt spray rating
- Wet Location Listed to UL524 and UL1598 Standard
- 24 mid-power LEDs delivering up to 3,000 lumens
- Up to 118 lumens per watt
- Type III and IV distributions for a wide variety of applications
- Zero uplight (UO), dark sky, neighbor friendly

INSTALLATION

- Universal plate for mounting to standard 3 1/2" and 4" square electrical boxes. All connections are made from connections at the rear of the unit.
- Optional back-box accessory available for surface conduit application.

DATE: LOCATION:
TYPE: PROJECT:
CATALOG #:

ORDERING GUIDE

Example: TRP1-24L-25-4K7-3-UNV-50-277V

CATALOG #

Series	# LEDs	Wattage	CCT/CRI	Distribution	Voltage
TRP1	24L	24 LEDs	3K 3000K, 70 CRI	2 TYPE II	UNV 120-277V
RD1	Radius	20	4K7 4000K, 70 CRI	3 TYPE II	120 120V
QSP1	Qtr-sphere	25	5K 5000K, 70 CRI	4F TYPE IV Wide	208 208V
			3K8 3000K, 80 CRI	4F TYPE IV Forward	240 240V
			4K8 4000K, 80 CRI		277 277V
			5K8 5000K, 80 CRI		347 347V
					480 480V

Color	Control Options Network	Options
BLT Black Matte Textured	PC Button Photocell	F ¹ Fusing (only available with STD fixture configuration, 120-277V only)
BLS Black Gloss Smooth	SCP ² Programmable occupancy sensor; factory default is 10% light output	E ¹ Battery pack (6°C)
DBT Dark Bronze Matte Textured	Spec SCP/SCCO & SWPM Mount Height	EH ³ Battery pack (-30°C) with heater
DBS Dark Bronze Gloss Smooth	8F ⁴ Up to 8ft mount height	
GTT Graphite Matte Textured	20F ⁴ Up to 20ft mount height	
LGS Light Grey Gloss Smooth		
PSS Platinum Silver Smooth		
WHT White Matte Textured		
WHS White Gloss Smooth		
WET Verde Green Textured		
CC Custom Color		

ACCESSORIES (ORDERED SEPARATELY)

- SCP-REMOTE² Remote control for SCP option. Order at least one per
- WP-BB-XXX Accessory for conduit entry, replace "xxx" with color option

Notes:
1 Voltage specific (120 or 277V only)
2 Must order minimum of one remote control to program dimming settings, 0-10V fully adjustable dimming with automatic daylight calibration and different time delay settings, 120-277V only
3 PCU option not applicable, included in 20F
4 Must specify mount voltage (20, 24, 240, 240, 240, 240)
5 PCU and EH cannot be combined in the QSP1 because of space constraints

WB-BB Wetback Back Box

KEY DATA	
Lumen Range	1720-2896
Wattage Range	15-25
Efficacy Range (LPW)	107-131
Weights lbs. (kg)	10.5-11.5 (4.8-5.2)

Current

currentlighting.com/beacon
© 2024 Current Lighting Solutions, LLC. All rights reserved. Information and specifications subject to change without notice. All values are design or typical values when measured under laboratory conditions.
Page 1 of 8
Rev 02/23/25
GeoPak TRP1 QSP1 RD1 SpecSheet_R04

EXO
OUTDOOR LIGHTING
SLING Micro Strike
AREA/SITE/ROAD LIGHTER

ORDERING GUIDE

Example: ASL1-80L-50-3K7-2-UNV-ASQU-BLT-7PRMD-40F

CATALOG #

ORDERING INFORMATION

Series	# LEDs	CCT/CRI	Distribution	Voltage	Mounting
ASL1 ASL MicroStrike Series	80L-25 3000 Im 80L-39 4500 Im 80L-50 6000 Im 80L-70 9000 Im 80L-100 12000 Im 80L-165 18000 Im 80L-195 18000 Im	3K7 3000K, 70 CRI 4K7 4000K, 70 CRI 5K7 5000K, 70 CRI	2 Type I 3 Type II 4F Type 4F 4W Type 4W 5GW Type 5GW	UNV Universal 120-277V 120 120V 208 208V 240 240V 277 277V 347 347V 480 480V	A Arm for Square poles with 52 shell pattern A3 Square Arm with 1.25"-3.75" OD RPAS Adapter A4 Square Arm with 3.875"-4.5" OD RPAS Adapter A5 Square Arm with 6" OD RPAS Adapter MAF Mast Arm Fitter for 2-3/8" OD
ASL2 ASL MicroStrike Series	300K-145 30,000 Im 300K-170 24,000 Im 300K-185 27,000 Im 300K-210 30,000 Im 300K-235 32,000 Im 300K-255 35,000 Im				

Network Control Options

- NXWS5E** NX Networked Wireless Enabled Integral NXSP4-LMD PR Occupancy Sensor with Automatic Dimming Protocol and Bluetooth Programming **
- NXWS40F** NX Networked Wireless Enabled Higgs NXSP4-HMD PR Occupancy Sensor with Automatic Dimming Protocol and Bluetooth Programming **
- NXW** NX Networked Wireless Radio Module NXRM and Bluetooth Programming, without Sensor **

Stand Alone Sensors

- 7PR** 7 Pin Photocell
- 7PR-SC** 7 Pin Photocell with shunting cap
- 7PR-MDSF** 7 pin receptacle with low voltage sensor at 8' mounting for external control accessory
- 7PR-MD40F** 7 pin receptacle with low voltage sensor at 40' mounting for external control accessory
- 7PR-L** 7 Pin Photocell with Photocell

Sensors

- BTS,F** Bluetooth Programmable PR Occupancy/Daylight Sensor, 300' line **
- BTS,O,F** Bluetooth Programmable PR Occupancy/Daylight Sensor, 300' line, up to 12' mounting height **

Options

- F** Fusing
- BC** Backlight Control
- SP** 20KA & 10kV Surge Protector

Color

- BLT Black Matte Textured
- BLS Black Gloss Smooth
- DBT Dark Bronze Matte Textured
- DBS Dark Bronze Gloss Smooth
- GTT Graphite Matte Textured
- LGS Light Grey Gloss Smooth
- PSS Platinum Silver Smooth
- WHT White Gloss Smooth
- WHS White Green Textured
- CC Custom Color

Notes

- 1 Must specify Voltage
- 2 Replace " " with "M" for up to 14' mounting height, "40" for 8-42' mounting height
- 3 Replace " " with "12" for up to 12' mounting height
- 4 Available at 50W or higher only

Color Option

Color	Control Options Network	Options
BLT Black Matte Textured	PC Button Photocell	F ¹ Fusing (only available with STD fixture configuration, 120-277V only)
BLS Black Gloss Smooth	SCP ² Programmable occupancy sensor; factory default is 10% light output	E ¹ Battery pack (6°C)
DBT Dark Bronze Matte Textured	Spec SCP/SCCO & SWPM Mount Height	EH ³ Battery pack (-30°C) with heater
DBS Dark Bronze Gloss Smooth	8F ⁴ Up to 8ft mount height	
GTT Graphite Matte Textured	20F ⁴ Up to 20ft mount height	
LGS Light Grey Gloss Smooth		
PSS Platinum Silver Smooth		
WHT White Gloss Smooth		
WHS White Green Textured		
CC Custom Color		

ACCESSORIES (ORDERED SEPARATELY)

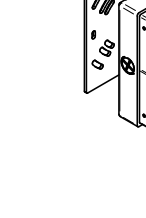
- SCP-REMOTE² Remote control for SCP option. Order at least one per
- WP-BB-XXX Accessory for conduit entry, replace "xxx" with color option

Notes:
1 Voltage specific (120 or 277V only)
2 Must order minimum of one remote control to program dimming settings, 0-10V fully adjustable dimming with automatic daylight calibration and different time delay settings, 120-277V only
3 PCU option not applicable, included in 20F
4 Must specify mount voltage (20, 24, 240, 240, 240, 240)
5 PCU and EH cannot be combined in the QSP1 because of space constraints

WB-BB Wetback Back Box

Color Option

- BLT Black Gloss Smooth
- BLS Black Matte Textured
- DBT Dark Bronze Gloss Smooth
- DBS Dark Bronze Matte Textured
- GTT Graphite Matte Textured
- LGS Light Grey Gloss Smooth
- PSS Platinum Silver Smooth
- WHT White Gloss Smooth
- WHS White Green Textured
- CC Custom Color



Current

currentlighting.com/beacon
© 2024 Current Lighting Solutions, LLC. All rights reserved. Information and specifications subject to change without notice. All values are design or typical values when measured under laboratory conditions.
Page 2 of 8
Rev 02/23/25
GeoPak TRP1 QSP1 RD1 SpecSheet_R04

KIMLIGHTING
ARCHITECTURAL AREA/SITE

FEATURES

- Integral Battery Backup Option
- 360° Light Distribution
- RGBW or Static White Luminous Front Option
- Multiple Fascia Options and Finishes
- 4G Vibration Tested



CONTROL TECHNOLOGY



SPECIFICATIONS

CONSTRUCTION

- Main housing shroud is made of fabricated 5052-H32 aluminum alloy
- Housing mounting interface has a stamped silicone gasket
- Luminaires housing is free of any visible heat fins, hardware or fasteners
- Bracketry and hardware is stainless steel
- Luminaires finish consist of a five stage pretreatment regimen with a polymer primer sealer, oven dry off, and top coated with a thermostat super TGIC polyester powder coat finish
- Luminaires finish meets the AAMA 605.2 performance specification which includes passing a 3000 hour salt spray test for corrosion resistance

LEDOPTICS

- LEDs are mounted to a metal printed circuit board assembly (MCPCB) with a uniform conformal coating over the panel surface and electrical features
- Optical lenses is clear injection molded PMMA acrylic
- Each LED is recessed in order to shield each LED optic across the length of the aperture
- Optical array is sealed for IP66 rating
- Secondary lens is impact resistant 5/32" tempered glass

INSTALLATION

- JUNCTION BOX: Standard with zinc-plated, quick-mount junction box plate that mounts directly to 4" J-Box
- Mounting plate features a one-piece EPDM gasket on back side of plate to firmly seal fixture to wall surface, forbidding entry of moisture and particulates

Current

currentlighting.com/kimlighting
© 2024 Current Lighting Solutions, LLC. All rights reserved. Information and specifications subject to change without notice. All values are design or typical values when measured under laboratory conditions.
Page 1 of 7
Rev 07/11/24
KL_Cy1_Spec_R02

KIMLIGHTING
ARCHITECTURAL AREA/SITE

ORDERING GUIDE

Example: CY1-15-3K7-1-2D-UNV-BLS-F-RGBW-FPP-PCU-SF

CATALOG #

Series Output (Base)	CCT/CRI	Model (Light Engine)	Main Distribution (Down)	Secondary Distribution (Up, Side)	Voltage
CY1-15 15W, 1500 nominal lumens	27K8 2700K, 80CRI	1 Downlight Only	1 ES Type I	1 ES Type I	UNV 120-277V
CY1-25 25W, 2500 nominal lumens	3K7 3000K, 70CRI	2 50/50 Down/Up, Down/Up distributions must match	2 ES Type II	2 ES Type II	
	3K8 3000K, 80CRI	3 90/90 Down/Up, Down/Up distributions must match	3 ES Type IV	3 ES Type IV	
	4K7 4000K, 70CRI	4 25/25/25/25 Split, Down/Up, Side Distributions must match	4 ES Type IV	4 ES Type IV	
	4K8 4000K, 80CRI	5 70/10/10/10 Split, Top/Side Distributions must match	5 ES Type IV	5 ES Type IV	
	5K7 5000K, 70CRI				

Base Housing Finish	Fascia Form ¹	Luminous Front ²	Fascia Panel ³	Control Options	Options
BLT Black Gloss Smooth	F Flat	Blank Standard None	FPP Full Panel Painted	PCU Universal (Button Photocell)	EM ¹ Battery Backup Unit -20° C
BLS Black Matte Textured	R Radius/Curved	RGBW RGBW Luminous	FPS Full Panel Stainless Steel	DDO-277V	SF Single Fuse (220, 277)
DBT Dark Bronze Gloss Smooth	T Triangle/Wedge	LFWS ⁴ Static White Luminous Front	FPC Full Panel Copper		DF Double Fuse (208, 240)
DBS Dark Bronze Matte Textured	E Rounded Edge		OP ⁵ Open Panel Stainless Steel		SCB Surface Conduit Box
GTT Graphite Matte Textured	C Circle/Curved		OP ⁵ Open Panel Stainless Steel		
LGS Light Grey Gloss Smooth	CB Cylinder/Balanced		OP ⁵ Open Panel Copper		
PSS Platinum Silver Smooth	CT Cylinder Tall		4PP ⁶ 4-Square Panel Painted		
WHT White Matte Textured	CM ⁷ Custom Blending Material Mount Groove Fascia		4PS ⁶ 4-Square Panel Stainless Steel		
WHS White Gloss Smooth			4PC 4-Square Panel Copper		
WET Verde Green Textured			PPS Perforated Panel Painted		
CC Custom Color			PPS Perforated Panel Stainless Steel		
			PPC Perforated Panel Copper		

Notes:
1 Consult factory for custom distributions. See Distribution Matrix on page 4 restraints.
2 PB distribution is available for 90/90 and 70/10/10/10 models only. Not all combinations are recommended. See Distribution Matrix on page 2 for restraints.
3 Consult factory for custom color, name and corrosion finish.
4 RGBW and LFWS luminous fronts are only available with open, four square and perforated fascia panels.
5 Flat and Radius Fascia forms only. Painted panels by default match base Housing Finish color. Consult factory for custom panel finishes.
6 Luminous fronts require to select the Open Panel and 4-Square Panel Fascia panels.
7 Battery Backup not available with Triangle and Rounded Edge Fascia Forms.
8 Custom Blending Material Mount Groove Fascia option allows the Cypher to blend seamlessly into the building structure by matching the finish of architectural backgrounds. See page 6 for dimensions and contact factory for additional information. Custom material provided by others.

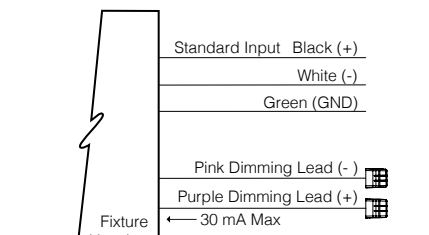
© 2024 Current Lighting Solutions, LLC. All rights reserved. Information and specifications subject to change without notice. All values are design or typical values when measured under laboratory conditions.
Page 5 of 7
Rev 07/11/24
KL_Cy1_Spec_R02

torch
ARCHITECTURE

MPEFP CONSULTANT



EXPIRES: 11/30/2027



- Integral battery backup provides emergency path of egress lighting for the required 90 minutes for -20°C ambient environments
- Luminaires are capable of operating at 100% brightness in a 40°C environment. Both driver and optical array shall have integral thermal protection that will dim the luminaire upon detection of temperatures in excess of 85°C

CONTROLS

- Button photocell for dusk to dawn energy savings
- Photocell is factory installed inside the housing with a fully gasketed sensor on the side wall. For multiple fixture mountings, one fixture is supplied with a photocell to operate the others. Photocell controller shall include an internal twist lock receptacle. Photocell by others.

continued on page 3

KEY DATA	
LUMEN RANGE	1,353-2,