

SPECIFICATIONS

ONE (1) DOUBLE FACE NON-ILLUMINATED LOGO WITH APPLIED VINYL

FLAG MOUNTED TO BRICK FASCIA ON CUSTOM FABRICATED BRACKET

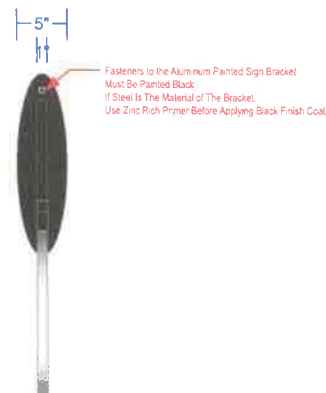
A. SIGN PANEL:
1" Deep - Painted

B. GRAPHICS:
3M Surface Applied Vinyl

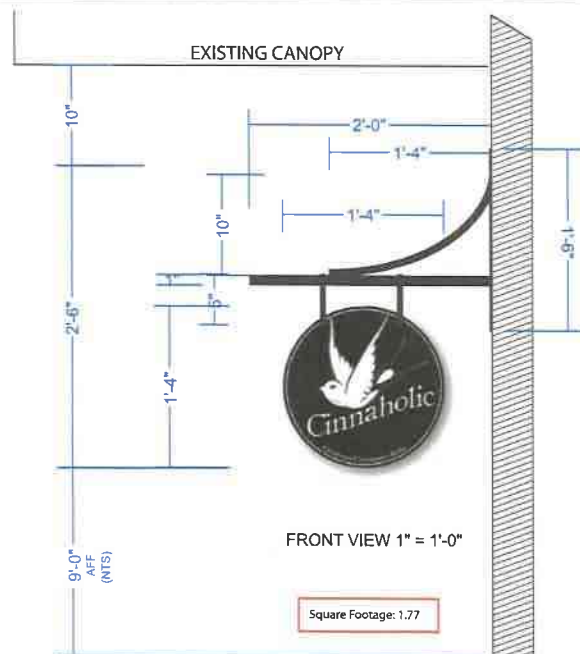
C. SIGN BRACKET:
Custom Fabricated Aluminum or Steel - Painted
**Fasteners to the Aluminum Painted Sign Bracket Must Be Painted Black. If Steel Is the Material of The Bracket, Use Zinc Rich Primer Before Applying Black Finish Coat.



Example Provided by Client



SIDE VIEW 1" = 1'-0"



Vector Art is Required to create art that is clean, and can be scaled infinitely, without any loss of quality or fidelity.

DEVELOPMENT SERVICES TEAM

INSTALLATION METHOD:

Mounted Flush To Brick Fascia into Masonry Grout Joints Only

NOV 01 2019

19-2221

Color / Finish Key:

** All Matthews (MP) Paint Specified to be Satin Finish, Unless Specified otherwise

- 1. MP Black
- 2. 3M 7725-10 White Vinyl
- 3. MP White

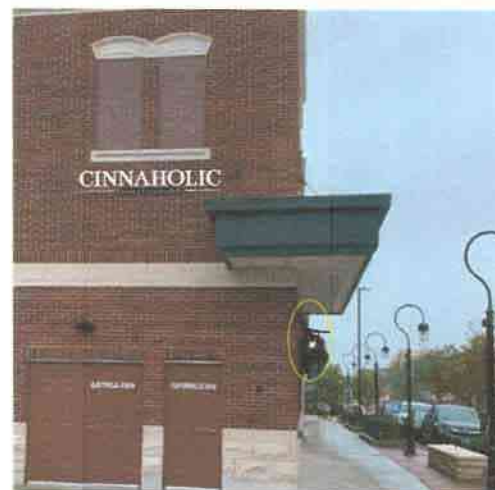
LATEST VERSION DATE: 10.21.19



Proposed West Elevation Views - NTS



Proposed North Elevation View - NTS



693 Heartland Drive - Sugar Grove, IL 60554
630.466.0372 P - 630.466.0564 F
www.quantumsigncorp.com

Customer:
Job Name: Cinnaholic
Address: 49 W. Jefferson, Suite 1021
City: Naperville State: IL 60540

Scale: 1" = 1'-0"
File Name: Cinnaholic - Naperville - REV E - page 3
Salesperson: Tom Campana

NOTE: FIELD VERIFICATION SURVEY REQUIRED TO DETERMINE ACTUAL SIZES, CONDITIONS, MATERIALS, ETC. BEFORE PROCEEDING. MANUFACTURE AND INSTALLATION OF THIS SIGN.

This original drawing was specifically created for your project and is property of Quantum Sign Corporation. It is not intended for replication or distribution to anyone outside of your organization and it shall not be reproduced or copied in any fashion.

Drawn By: JM

Page 3 of 3