


Schedule

Symbol	Label	QTY	Manufacturer	Catalog	Description	Number Lamps	Lamp Output	LLF	Input Power
	A	11	American Electric Lighting	ATBX P30 XXXXX R2 3K	ATBX with P30 Performance Package, Type 2 Distribution, 3000K	1	3102	0.9	23

Statistics

Description	Symbol	Avg	Max	Min	Max/Min	Avg/Min
East Property Line	+	0.0 fc	0.0 fc	0.0 fc	N/A	N/A
North Property Line	+	0.0 fc	0.0 fc	0.0 fc	N/A	N/A
South Exception Boundary	+	0.0 fc	0.0 fc	0.0 fc	N/A	N/A
South Lot Boundary	+	0.1 fc	7.8 fc	0.0 fc	N/A	N/A
West Property Line	+	0.0 fc	0.0 fc	0.0 fc	N/A	N/A
Drive Lanes	+	0.6 fc	8.3 fc	0.0 fc	N/A	N/A

Note

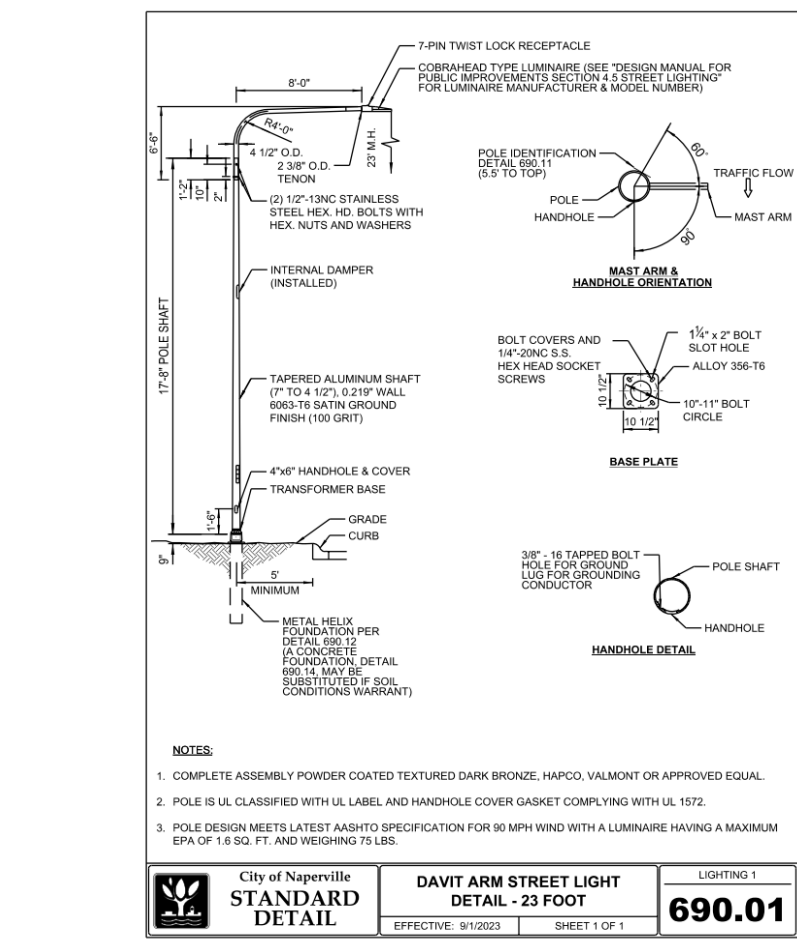
1. Luminaires depreciated to 0.9 LLF
2. See Location Schedule for aiming and orientation.
3. Visit acuitybrands.com for full spec information.

Luminaire Locations

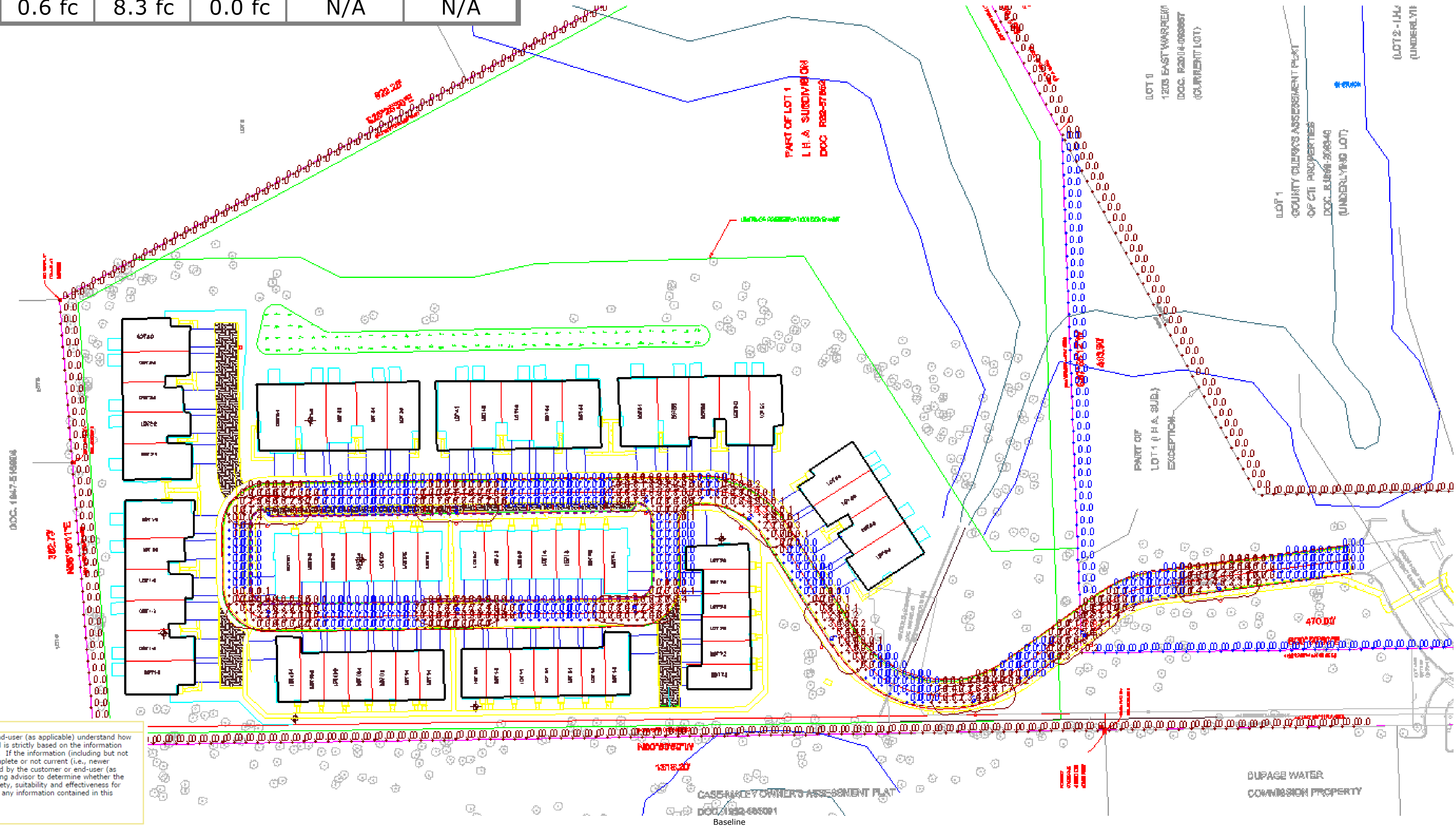
Location									Aim		
No.	Label	X	Y	Z	MH	Orientation	Tilt	X	Y	Z	
13	A	1039742.00	1873119.00	10.00	10.00	321.67	0.00	1039736.00	1873127.00	0.00	
14	A	1039643.00	1873061.00	10.00	10.00	353.62	0.00	1039642.00	1873071.00	0.00	
15	A	1039512.00	1873118.00	10.00	10.00	55.29	0.00	1039520.00	1873123.00	0.00	
16	A	1039443.00	1873219.00	10.00	10.00	38.77	0.00	1039449.00	1873226.00	0.00	
17	A	1039361.00	1873232.00	10.00	10.00	0.00	0.00	1039361.00	1873242.00	0.00	
18	A	1039198.00	1873223.00	10.00	10.00	0.00	0.00	1039198.00	1873233.00	0.00	
19	A	1039037.00	1873221.00	10.00	10.00	0.00	0.00	1039037.00	1873231.00	0.00	
20	A	1039037.00	1873156.00	10.00	10.00	180.00	0.00	1039037.00	1873147.00	0.00	
21	A	1039199.00	1873158.00	10.00	10.00	180.00	0.00	1039199.00	1873149.00	0.00	
22	A	1039351.00	1873160.00	10.00	10.00	180.00	0.00	1039351.00	1873151.00	0.00	
12	A	1039853.00	1873157.00	10.00	10.00	353.56	0.00	1039852.00	1873167.00	0.00	



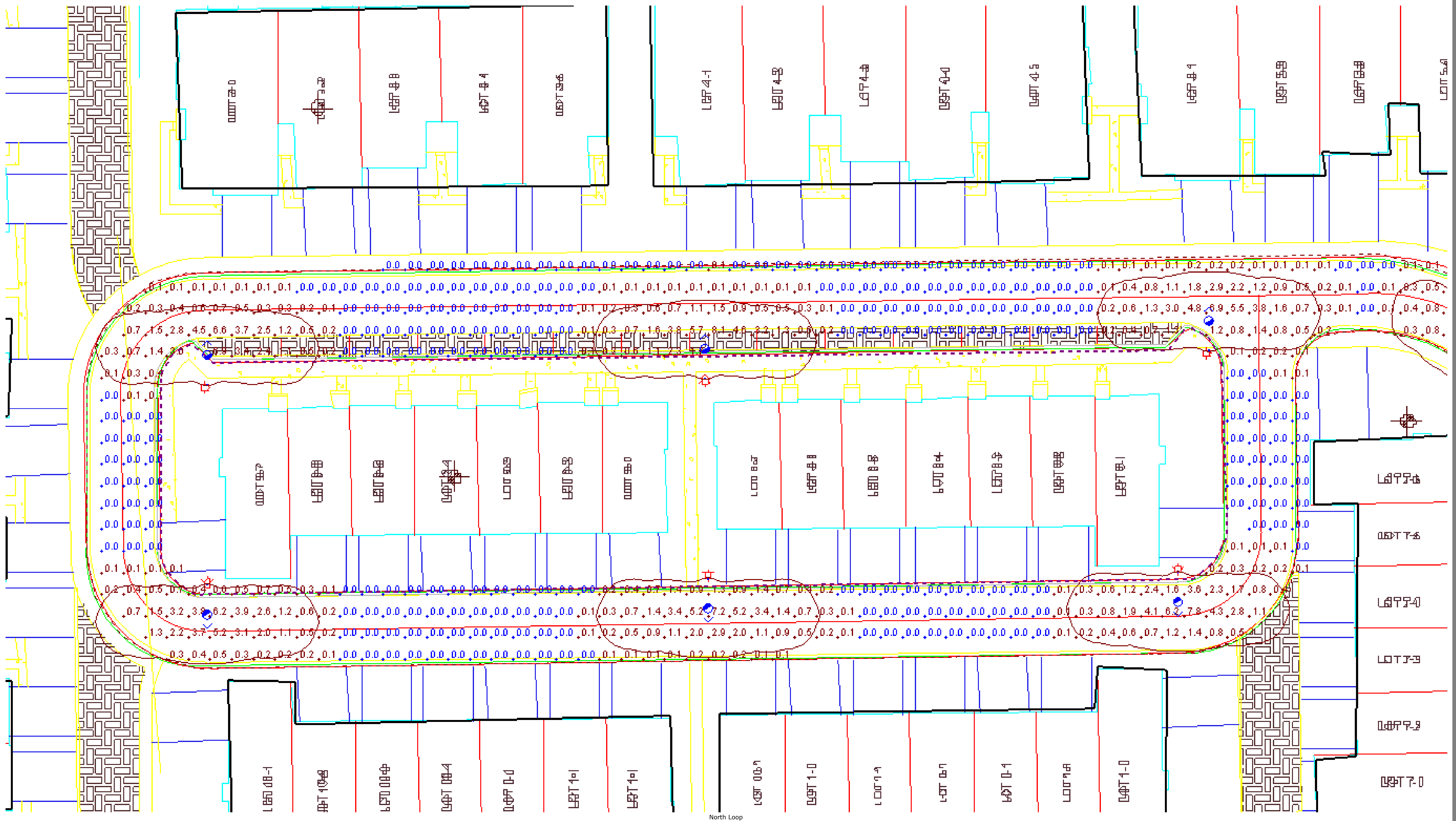
Northwoods of Naperville, IL, 2392-A1

[illegible]

D1 This architectural lighting submittal is provided only for informational purposes and to the help the customer or end-user (as applicable) understand how various sections of linear fixtures connect to each other and how they mount to the ceiling. This lighting submittal is strictly based on the information provided to Acuity Brands, and is provided without warranty as to accuracy, completeness, reliability or otherwise. If the information (including but not limited to reflected ceiling plans, electrical plans and specifications) provided to Acuity Brands is incomplete or incorrect (i.e., never existed or is no longer accurate), the accuracy of the proposed design may be adversely affected. Once this lighting submittal is received by the customer or end-user (as applicable), it is the obligation of the customer or end-user (as applicable) to consult with a professional engineering advisor to determine whether the proposed design meets the applicable project requirements for lighting system performance, code compliance, safety, suitability and effectiveness for use in a particular application. In no event will Acuity Brands be responsible for any loss resulting from any use of any information contained in this lighting submittal.



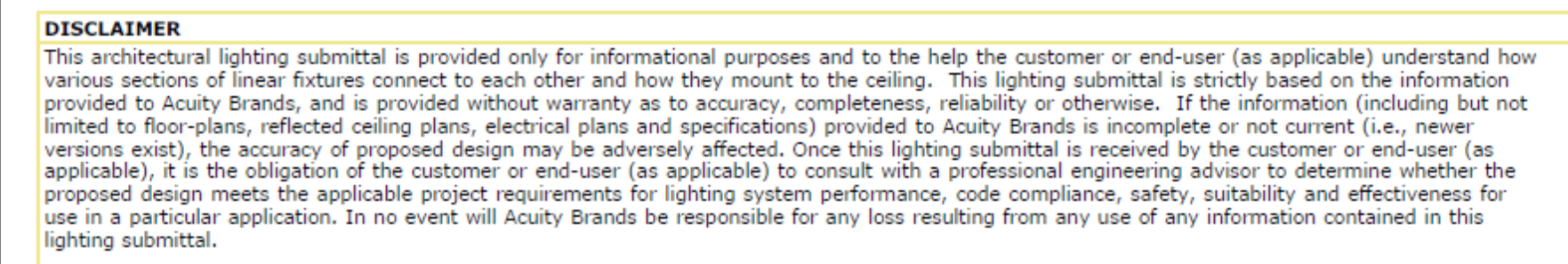
Designer
RMorgan
Date
06/25/2025
Scale
Not to Scale
Drawing No.
A1
Summary



DISCLAIMER
This architectural lighting submittal is provided only for informational purposes and to the help the customer or end-user (as applicable) understand how various sections of linear fixtures connect to each other and how they mount to the ceiling. This lighting submittal is strictly based on the information provided to Acuity Brands, and is provided without warranty as to accuracy, completeness, reliability or otherwise. If the information (including but not limited to floor-plans, reflected ceiling plans, electrical plans and specifications) provided to Acuity Brands is incomplete or not current (i.e., newer versions exist), the accuracy of proposed design may be adversely affected. Once this lighting submittal is received by the customer or end-user (as applicable), it is the obligation of the customer or end-user (as applicable) to consult with a professional engineering advisor to determine whether the proposed design meets the applicable project requirements for lighting system performance, code compliance, safety, suitability and effectiveness for use in a particular application. In no event will Acuity Brands be responsible for any loss resulting from any use of any information contained in this lighting submittal.

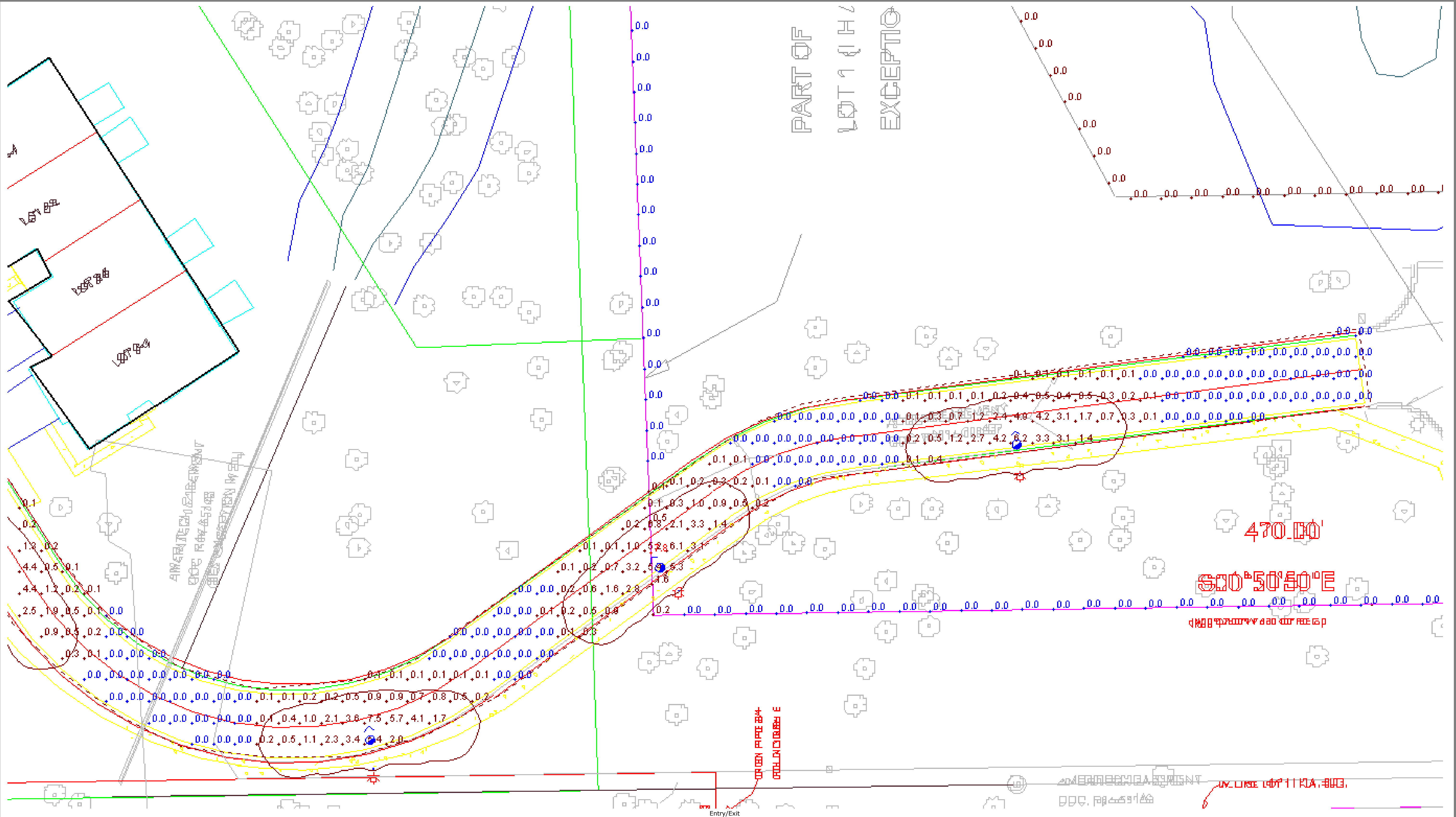


3 of 4





4 of 4



DISCLAIMER

This architectural lighting submittal is provided only for informational purposes and to the help the customer or end-user. This architectural lighting submittal is strictly based on the information provided to Acuity Brands, and is provided without warranty as to accuracy, completeness, reliability or otherwise. If the information (including but not limited to, color, material, finish, dimensions, and specifications) provided to Acuity Brands is incomplete or not current (i.e., newer versions exist), the accuracy of proposed design may be adversely affected. Once this lighting submittal is received by the customer or end-user (as applicable), it is the obligation of the customer or end-user (as applicable) to consult with a professional engineering advisor to determine whether the proposed design meets the applicable project requirements for lighting system performance, code compliance, safety, suitability and effectiveness for use in a particular application. In no event will Acuity Brands be responsible for any loss resulting from any use of any information contained in this lighting submittal.



Consistent with LEED® goals
& Green Globes® criteria
for light pollution reduction



Autobahn Series ATBX

Roadway & Security Lighting

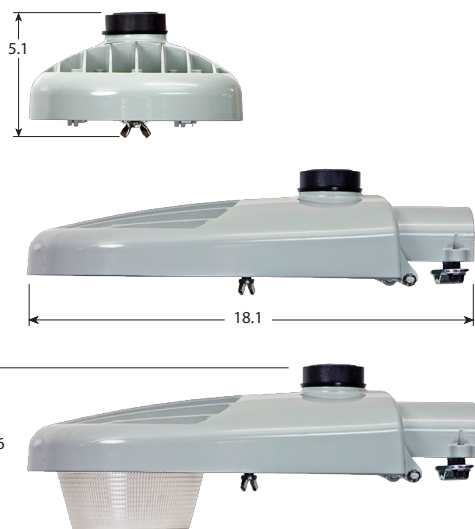
PRODUCT OVERVIEW



Applications:

Residential streets
Parking lots
General security lighting

DIMENSIONS



Effective Projected Area (EPA) The EPA for the ATBX is .26 sq. ft.
Approx. Wt. = 8lbs.

STANDARDS

DesignLights Consortium® (DLC) qualified product. Not all versions of this product may be DLC qualified. Please check the DLC Qualified Products List at www.designlights.org/QPL to confirm which versions are qualified.

Color temperatures of $\leq 3000\text{K}$ must be specified for International Dark-Sky Association certification.

Rated for -40°C to 40°C ambient

CSA Certified to U.S. and Canadian standards

Complies with ANSI: C136.2, C136.10, C136.14, C136.31, C136.15, C136.37

GOVERNMENT PROCUREMENT — BAA — Buy America(n) Act: Product with the BAA option qualifies as a domestic end product under the Buy American Act as implemented in the FAR and DFARS. Product with the BAA option also qualifies as manufactured in the United States under DOT Buy America regulations.

BABA — Build America Buy America: Product with the BAA option also qualifies as produced in the United States under the definitions of the Build America, Buy America Act.

Please refer to www.acuitybrands.com/buy-american for additional information.

Note: Actual performance may differ as a result of end-user environment and application. Specifications subject to change without notice.

Features:

OPTICAL

Same Light: Performance is comparable to 50W – 150W HPS and up to 175W Mercury Vapor roadway and security lighting luminaires.

White Light: Correlated color temperature - 4000K, 70 CRI minimum, 3000K, 70 CRI minimum.

IP66 rated borosilicate glass optics ensure longevity and minimize dirt depreciation. Unique IP66 rated LED light engines provide 0% uplight and restrict backlight to within sidewalk depth, providing optimal application coverage and optimal pole spacing.

Available distributions are Type II, III, IV, and V roadway distributions. When used with the optional acrylic refractor the unit provides approximately 10% uplight and increased vertical foot-candles

ELECTRICAL

Expected Life: LED light engines are rated $>100,000$ hours at 25°C , L70. Electronic driver has an expected life of 100,000 hours at a 25°C ambient.

Lower Energy: Saves an expected 40–60% over comparable HID luminaires.

Standard surge protection is 20kV/10kA “Extreme Level” per ANSI C136.2. An optional MOV pack provides 10kV/5kA “Enhanced Level.”

Luminaire ships with a 0–10v dimmable driver. Luminaire is continuous and step dimming capable via AO option or controls installed on P7 photocontrol receptacle option.

MECHANICAL

Includes standard AEL lineman-friendly features such as tool-less entry, 3 station terminal block and quick disconnects. Bubble level located inside the electrical compartment for easy leveling at installation.

Rugged die-cast aluminum housing and door are polyester powder-coated for durability and corrosion resistance. Rigorous five-stage pre-treating and painting process yields a finish that achieves a scribe creepage rating of 8 (per ASTM D1654) after over 5000 hours exposure to salt fog chamber (operated per ASTM B117).

Mast arm mount is adjustable for arms from 1-1/4” to 2” (1-5/8” to 2-3/8” O.D.) diameter. The 2 – bolt clamping mechanism provides 3G vibration rating per ANSI C136.31.

CONTROLS

NEMA 3 pin photocontrol receptacle is standard, with the Acuity designed ANSI standard 7 pin receptacle optionally available.

Premium solid state locking-style photocontrol – PCSS (10 year rated life) Extreme long life solid state locking-style photocontrol – PCL1 (20 year rated life)

Optional onboard Adjustable Output module allows the light output and input wattage to be modified to meet site specific requirements, and also can allow a single fixture to be flexibly applied in many different applications.

Autobahn Series ATBX

Roadway & Security Lighting

ORDERING INFORMATION

Series	Performance Packages	Voltage	Optics
ATBX Autobahn LED Roadway & Security	P10 2,000 lumens P20 2,500 lumens P30 3,200 lumens P40 3,900 lumens P50 5,600 lumens P60 6,600 lumens P70 7,400 lumens	MVOLT Multi-volt, 120-277V	R2 Roadway Type II R3 Roadway Type III R4 Roadway Type IV R5 Roadway Type V D3^{3,4} Type III, Drop Refractor included D5^{3,4} Type V, Drop Refractor included

Options		
<u>Color Temperature (CCT)</u> (Blank) 4000K CCT, 70 CRI Min. 3K 3000K CCT, 70 CRI Min. <u>Paint</u> Blank Gray (Standard) BK Black WH White BZ Bronze <u>Surge Protection</u> Blank Standard 20kV/10kA SPD MP MOV Pack <u>Misc.</u> VR Visual Comfort Refractor HSS House Side Shield NL NEMA Label XL Not CSA Certified BAA Buy America(n) Act and/or Build America Buy America Qualified	<u>Controls</u> (Blank) 3 Pin NEMA Photocontrol Receptacle NR¹ No Photocontrol Receptacle DM² 0V-10V Dimmable Driver P7 7 Pin Photocontrol Receptacle (dimmable driver included) PCSS¹ DTL DSS Photocontrol PCLL¹ DTL DLL Photocontrol 120-277V AO Field Adjustable Output SH Shorting Cap <u>Packages</u> (Blank) Standard Pack JP Job Pack <u>Install Packages</u> PKGS DTL DSS Photocontrol PKGL DTL DLL Photocontrol Packages ship with selected photocontrol, 24", 1 1/4" diameter arm, 5' of prewire and mounting hardware	<u>Accessories</u> ATBXREF Drop Refractor for field installation ATBXHSS House Side Shield for field installation ATBXLTS Light Trespass Shield for field installation ATBXVR-XX Comfort Refractor & Uplight Skirt, Select Paint (XX) to Match Fixture

Notes

1. Not available with Install Packages.
2. Not available with AO option.
3. Not IDA Compliant
4. Not compatible with HSS or LTS shields.



AEL Headquarters, One Lithonia Way, Conyers Georgia 30012
 www.americanelectriclighting.com Phone: 1-866-HOLOPHANE
 Email: TechSupport-Lighting@AcuityBrands.com

© 2014-2024 Acuity Brands Lighting, Inc. All Rights Reserved. Rev. 12/31/24 ATBX

Warranty Five-year limited warranty. This is the only warranty provided and no other statements in this specification sheet create any warranty of any kind. All other express and implied warranties are disclaimed. Complete warranty terms located at:

www.acuitybrands.com/support/warranty/terms-and-conditions

Note: Actual performance may differ as a result of end-user environment and application. All values are design or typical values, measured under laboratory conditions at 25 °C. Specifications subject to change without notice.

Please contact your sales representative for the latest product information.

Autobahn Series ATBX

Roadway & Security Lighting

PERFORMANCE PACKAGE															
Performance Package	Distribution	Input Watts	3000K CCT, 70 CRI					4000K CCT, 70 CRI					LLD @ 25C		
			Lumens	LPW	B	U	G	Lumens	LPW	B	U	G	50K Hours	75K Hours	100K Hours
P10	R2	14	1,956	140	1	0	1	2,030	145	1	0	1	0.92	0.89	0.85
	R3		1,955	140	0	0	1	2,011	144	0	0	1			
	R4		1,982	142	1	0	1	1,974	141	1	0	1			
	R5		2,145	153	1	0	0	2,160	154	1	0	0			
	D3		1,908	136	1	2	1	1,963	140	1	2	1			
	D5		2,077	148	1	2	1	2,092	149	1	2	1			
P20	R2	18	2,455	136	1	0	1	2,575	143	1	0	1	0.92	0.89	0.85
	R3		2,473	137	1	0	1	2,547	142	1	0	1			
	R4		2,505	139	1	0	1	2,497	139	1	0	1			
	R5		2,715	151	2	0	0	2,735	152	2	0	0			
	D3		2,414	134	1	2	1	2,486	138	1	2	1			
	D5		2,629	146	1	2	1	2,648	147	1	2	1			
P30	R2	23	3,102	135	1	0	1	3,243	141	1	0	1	0.92	0.89	0.85
	R3		3,125	136	1	0	1	3,232	141	1	0	1			
	R4		3,153	137	1	0	1	3,150	137	1	0	1			
	R5		3,422	149	2	0	1	3,431	149	2	0	1			
	D3		3,050	133	1	2	1	3,155	137	1	2	1			
	D5		3,314	144	1	2	1	3,322	144	1	2	1			
P40	R2	28	3,603	129	1	0	1	3,790	135	1	0	1	0.92	0.89	0.85
	R3		3,705	132	1	0	1	3,890	139	1	0	1			
	R4		3,640	130	1	0	2	3,817	136	1	0	2			
	R5		3,971	142	2	0	1	4,167	149	2	0	1			
	D3		3,617	129	1	2	2	3,797	136	1	2	2			
	D5		3,845	137	2	2	1	4,035	144	2	2	1			
P50	R2	41	5,426	132	2	0	2	5,425	132	2	0	2	0.92	0.89	0.85
	R3		5,248	128	1	0	2	5,615	137	1	0	2			
	R4		5,300	129	1	0	2	5,462	133	1	0	2			
	R5		5,647	138	3	0	1	6,033	147	3	0	1			
	D3		5,123	125	1	3	2	5,481	134	1	3	2			
	D5		5,468	133	2	3	2	5,842	142	2	3	2			
P60	R2	51	6,392	125	2	0	2	6,416	126	2	0	2	0.92	0.88	0.84
	R3		6,208	122	1	0	2	6,635	130	1	0	2			
	R4		6,207	122	1	0	2	6,432	126	1	0	2			
	R5		6,690	131	3	0	1	7,127	140	3	0	1			
	D3		6,059	119	1	3	2	6,477	127	1	3	2			
	D5		6,478	127	2	3	2	6,901	135	3	3	2			
P70	R2	60	7,133	140	2	0	2	7,246	142	2	0	2	0.92	0.88	0.84
	R3		6,967	137	1	0	2	7,449	146	1	0	2			
	R4		6,957	136	1	0	2	7,235	142	1	0	2			
	R5		7,492	147	3	0	1	7,939	156	3	0	1			
	D3		6,800	133	2	3	2	7,271	143	2	3	2			
	D5		7,255	142	3	3	2	7,688	151	3	3	2			



AEL Headquarters, One Lithonia Way, Conyers Georgia 30012
 www.americanelectriclighting.com Phone: 1-866-HOLOPHANE
 Email: TechSupportNF@AcuityBrands.com

© 2014-2024 Acuity Brands Lighting, Inc. All Rights Reserved. Rev. 12/31/24 ATBX

Warranty Five-year limited warranty. This is the only warranty provided and no other statements in this specification sheet create any warranty of any kind. All other express and implied warranties are disclaimed. Complete warranty terms located at:
www.acuitybrands.com/support/warranty/terms-and-conditions

Note: Actual performance may differ as a result of end-user environment and application. All values are design or typical values, measured under laboratory conditions at 25 °C. Specifications subject to change without notice.
Please contact your sales representative for the latest product information.

Autobahn Series ATBX

Roadway & Security Lighting

PERFORMANCE DATA with VISUAL COMFORT REFRACTOR

Performance Package	Distribution	Input Watts	3000K CCT, 70 CRI					4000K CCT, 70 CRI					LLD @ 25C		
			Lumens	LPW	B	U	G	Lumens	LPW	B	U	G	50K Hours	75K Hours	100K Hours
P10	R2 with VR	14	1,686	120	1	0	1	1,747	125	1	0	1	0.92	0.89	0.85
	R3 with VR		1,669	119	1	0	1	1,698	121	1	0	1			
	R4 with VR		1,602	114	1	0	1	1,626	116	1	0	1			
	R5 with VR		1,814	130	1	0	1	1,862	133	1	0	1			
P20	R2 with VR	18	2,124	118	1	0	1	2,205	123	1	0	1	0.92	0.89	0.85
	R3 with VR		2,104	117	1	0	1	2,138	119	1	0	1			
	R4 with VR		2,019	112	1	0	1	2,053	114	1	0	1			
	R5 with VR		2,290	127	1	0	1	2,346	130	1	0	1			
P30	R2 with VR	23	2,684	117	1	0	1	2,788	121	1	0	1	0.92	0.89	0.85
	R3 with VR		2,659	116	1	0	1	2,699	117	1	0	1			
	R4 with VR		2,553	111	1	0	1	2,594	113	1	0	1			
	R5 with VR		2,892	126	2	0	1	2,969	129	2	0	1			
P40	R2 with VR	28	3,240	116	1	0	1	3,369	120	1	0	1	0.92	0.89	0.85
	R3 with VR		3,204	114	1	0	1	3,261	116	1	0	1			
	R4 with VR		3,081	110	1	0	2	3,124	112	1	0	2			
	R5 with VR		3,495	125	2	0	1	3,584	128	2	0	1			
P50	R2 with VR	41	4,633	113	1	0	2	4,818	118	1	0	2	0.92	0.89	0.85
	R3 with VR		4,499	110	1	0	2	4,617	113	1	0	2			
	R4 with VR		4,343	106	1	0	2	4,504	110	1	0	2			
	R5 with VR		4,869	119	2	0	1	5,117	125	2	0	1			
P60	R2 with VR	51	5,495	108	2	0	2	5,710	112	2	0	2	0.92	0.88	0.84
	R3 with VR		5,330	105	1	0	2	5,490	108	1	0	2			
	R4 with VR		5,145	101	1	0	2	5,328	104	1	0	2			
	R5 with VR		5,771	113	3	0	1	6,061	119	3	0	1			
P70	R2 with VR	60	6,167	121	2	0	2	6,396	125	2	0	2	0.92	0.88	0.84
	R3 with VR		5,978	117	1	0	2	6,110	120	1	0	2			
	R4 with VR		5,772	113	1	0	2	5,962	117	1	0	2			
	R5 with VR		6,482	127	3	0	1	6,799	133	3	0	2			



AEL Headquarters, One Lithonia Way, Conyers Georgia 30012
 www.americanelectriclighting.com Phone: 1-866-HOLOPHANE
 Email: TechSupport1NF@AcuityBrands.com

© 2014-2024 Acuity Brands Lighting, Inc. All Rights Reserved. Rev. 12/31/24 ATBX

Warranty Five-year limited warranty. This is the only warranty provided and no other statements in this specification sheet create any warranty of any kind. All other express and implied warranties are disclaimed. Complete warranty terms located at:

www.acuitybrands.com/support/warranty/terms-and-conditions

Note: Actual performance may differ as a result of end-user environment and application. All values are design or typical values, measured under laboratory conditions at 25 °C. Specifications subject to change without notice.

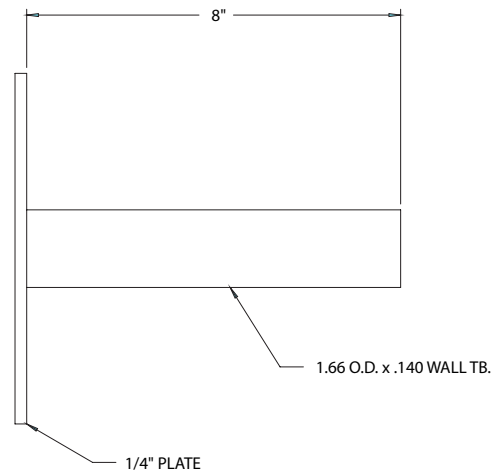
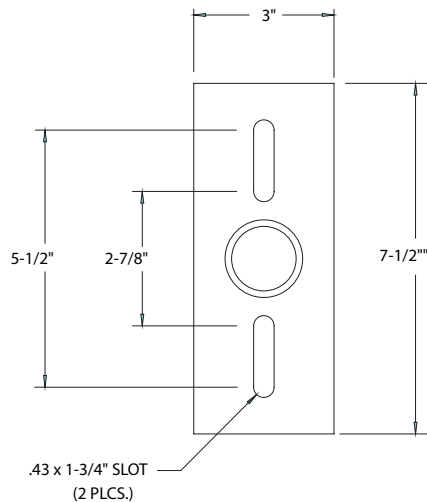
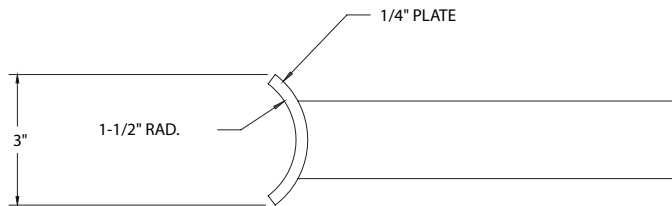
Please contact your sales representative for the latest product information.

Autobahn Series ATBX

Roadway & Security Lighting

UMR POLE ADAPTOR

RECOMMENDED FOR USE WITH POLES OF 4" DIAMETER OR SMALLER



UMS POLE ADAPTOR



AEL Headquarters, One Lithonia Way, Conyers Georgia 30012
www.americanelectriclighting.com Phone: 1-866-HOLOPHANE
Email: TechSupport-Lighting@AcuityBrands.com

© 2014-2024 Acuity Brands Lighting, Inc. All Rights Reserved. Rev. 12/31/24 ATBX

Warranty Five-year limited warranty. This is the only warranty provided and no other statements in this specification sheet create any warranty of any kind. All other express and implied warranties are disclaimed. Complete warranty terms located at:

www.acuitybrands.com/support/warranty/terms-and-conditions

Note: Actual performance may differ as a result of end-user environment and application. All values are design or typical values, measured under laboratory conditions at 25 °C. Specifications subject to change without notice.

Please contact your sales representative for the latest product information.



PRODUCT DESCRIPTION

The Granville collection updates the industrial farmhouse look with cleaner and minimalist textured Black arms with Glossy Black or Gloss White shades. Design elements like knurled sockets and black painted edges highlight the attention to detail and relate authenticity. Perfectly suited for both indoor and outdoor applications, these aluminum constructed shades are an instant classic.

MEASUREMENTS

DIMENSION : 12" W x 11.25" H x 15.5" Ext
 BACK PLATE : 5" W x 5" H x 2.75" HCO
 HANGING WEIGHT : 1.48 lb

LAMPING

INPUT VOLTAGE : 120V
 BULB : 1 x 60W Incandescent E26 Medium , 60W Total
 BULB INCLUDED : (Not Included)
 DIMMABLE :
 LIGHTING_DIRECTION : Down

FINISHES OPTION

 Gloss Black / Black (GBBK)
 White / Black (WTBK)

MATERIAL

Aluminum

RATINGS

cETLus
 Wet Location



ADDITIONAL

INSTALL UP/DOWN: Down
 OPERATING TEMPERATURE:
 -20°C (-4°F), 40°C (104°F)

Always consult a qualified electrician before installing any lighting product.



WESTERN DISTRIBUTION CENTER (HEADQUARTER)
 253 NORTH VINELAND AVE | CITY OF INDUSTRY, CA 91746

EASTERN DISTRIBUTION CENTER
 101 GARDNER PARK | PEACHTREE CITY, GA 30269

P. 626.956.4200 | F. 626.956.4225 | maximlighting.com

**PRODUCT DESCRIPTION**

This very compact LED flush mount directly installs on any 4" junction box and gives the look of a recessed trim. Constructed of Die Cast Aluminum, the Diverse luminaire is dimmable and approved for wet or damp locations so it can be used in virtually any ceiling application, including showers.

MEASUREMENTS

DIMENSION : 7.5" L x 7.5" W x 1.2" H
HANGING WEIGHT : 0.35 lb

LAMPING

INPUT VOLTAGE : 120V
LUMENS : 1,250 Rated (1,000 Del.)
BULB : 1 x 11W LED PCB Integrated , 11W Total
DIMMABLE : Triac/ELV
CRI : 90 CRI
COLOR_TEMP : 3000K
LIGHTING_DIRECTION : Down

FINISHES OPTION

 White (WT)

GLASS

White WT

MATERIAL

Aluminum & Polycarbonate

RATINGS

cETLus
Wet Location
CA Title 24

**ADDITIONAL**

INSTALL UP/DOWN: Up
RATED LIFE 50000 Hours
OPERATING TEMPERATURE:
-20°C (-4°F), 40°C (104°F)

Always consult a qualified electrician before installing any lighting product.



WESTERN DISTRIBUTION CENTER (HEADQUARTER)
253 NORTH VINELAND AVE | CITY OF INDUSTRY, CA 91746

EASTERN DISTRIBUTION CENTER
101 GARDNER PARK | PEACHTREE CITY, GA 30269

P. 626.956.4200 | F. 626.956.4225 | maximlighting.com



BUILDERS LIGHTING AND DESIGN LED OUTDOOR WALL SCONCE

► **DESIGN** - LED OUTDOOR WALL SCONCE has a modern, multipurpose design and a stylish look with efficient lighting. Durable housing resistant to rust and impact provides many years of service. The UV resistant PMMA lens with a 125° beam angle grants you even light distribution. It is designed to operate on 120V circuits.

► **PHOTOCELL** - The built-in Dusk to Dawn Photocell will automatically turn the fixture on/off depending on the time of day.

► **COLOR SELECTABLE** - You can choose either a 3,000K warm white, 4,000K cool white or 5,000K daylight color temperature.

► **APPLICATION** - The fixture is rated for Wet Locations, making it perfect for indoor and outdoor projects such as decks, front doors, porches, patios, corridors, walkways, or any other common areas.

► **ADVANTAGES** - With a lifespan of 50,000 hours, these fixtures are made to last decades under normal operation! ASD provides a 5-year limited warranty along with ETL certification to guarantee top quality products and safety!

Catalog number	
Notes	
Type	



Finish: ☐ White ☐ Bronze ☐ Black

Model	Size	Watts	Voitage	Dimmable	Lumens	CCT	Finish	Dimensions (LxWxH)	Option
ASD-OLWS-23-8D12CC-WH	8 inch	12W	120 V	TRIAC	up to 909 lm	3CCT (3,000/4,000/5,000 K)	White	6" x 3-1/8" x 8"	-
ASD-OLWS-23-8D12CC-BZ	8 inch	12W	120 V	TRIAC	up to 909 lm	3CCT (3,000/4,000/5,000 K)	Oil rubbed bronze	6" x 3-1/8" x 8"	-
ASD-OLWS-23-8D12CC-BK	8 inch	12W	120 V	TRIAC	up to 909 lm	3CCT (3,000/4,000/5,000 K)	Black	6" x 3-1/8" x 8"	-
ASD-OLWS-23-14D20CC-WH	14 inch	20W	120 V	TRIAC	up to 1,909 lm	3CCT (3,000/4,000/5,000 K)	White	6" x 3-1/8" x 14"	-
ASD-OLWS-23-14D20CC-BZ	14 inch	20W	120 V	TRIAC	up to 1,909 lm	3CCT (3,000/4,000/5,000 K)	Oil rubbed bronze	6" x 3-1/8" x 14"	-
ASD-OLWS-23-14D20CC-BK	14 inch	20W	120 V	TRIAC	up to 1,909 lm	3CCT (3,000/4,000/5,000 K)	Black	6" x 3-1/8" x 14"	-
OLWS-23-PC WITH PHOTOCELL									
ASD-OLWS-23-14N20CC-PC-BZ	14 inch	20W	120 V	-	up to 1,909 lm	3CCT (3,000/4,000/5,000 K)	Oil rubbed bronze	6" x 3-1/8" x 14-5/8"	Photocell
ASD-OLWS-23-14N20CC-PC-BK	14 inch	20W	120 V	-	up to 1,909 lm	3CCT (3,000/4,000/5,000 K)	Black	6" x 3-1/8" x 14-5/8"	Photocell

For detailed luminous flux information please refer to Annex, page 3.

ORDERING INFORMATION

Model	UPC	Pcs. per carton	Carton size	Carton weight	GTIN 14
ASD-OLWS-23-8D12CC-WH	810050737784	4	13.2" x 7.3" x 9.1"	10.6 lbs	10810050737781
ASD-OLWS-23-8D12CC-BZ	810050737777	4	13.2" x 7.3" x 9.1"	10.6 lbs	10810050737774
ASD-OLWS-23-8D12CC-BK	810050738842	4	13.2" x 7.3" x 9.1"	10.6 lbs	10810050738849
ASD-OLWS-23-14D20CC-WH	810050737791	4	13.2" x 7.3" x 15"	13.2 lbs	10810050737798
ASD-OLWS-23-14D20CC-BZ	810050736442	4	13.2" x 7.3" x 15"	13.2 lbs	30810050736443
ASD-OLWS-23-14D20CC-BK	810050738859	4	13.2" x 7.3" x 15"	13.2 lbs	10810050738856
OLWS-23-PC WITH PHOTOCELL					
ASD-OLWS-23-14N20CC-PC-BZ	810050736756	4	13.2" x 7.3" x 15.8"	13.6 lbs	30810050736757
ASD-OLWS-23-14N20CC-PC-BK	810128110532	4	13.2" x 7.3" x 15.8"	13.6 lbs	10810128110539

For most up-to-date spec sheets please refer to asd-lighting.com

ASD LIGHTING CORP

E-mail: orders@asd-lighting.com | Web site: www.asd-lighting.com





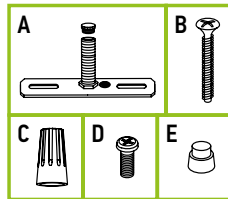
LED OUTDOOR WALL SCONCE

PRODUCT SPECIFICATIONS:

Construction & Materials		Electrical system				
Housing	Aluminium	Input voltage	120 V			
Lens	Acrylic	Max input current	0.185 A	for 8 inch models: 0.11 A		
Finish	White, Oil rubbed bronze, Black	Inrush current (Action time)	0.16 A (0.1 S)	for 8 inch models: 0.1 A (0.1 S)		
Weight	for 8" models: 1.9 lbs (0.9 kg)	Off state power	0W			
	for 14" models: 2.7 lbs (1.2 kg)	Power consumption	20W	for 8 inch models: 12W		
	for PC models: 2.8 lbs (1.3 kg)	Power factor	> 0.9			
Environmental system		Output voltage	30 V	for 8 inch models: 33 V		
Work environment	Suitable for Wet Locations	Max output current	0.58 A	for 8 inch models: 0.3 A		
Operating temperature	-40°F to 113°F (-40°C to 45°C)	Surge protection DM/CM	1.25 kV / 1.25 kV			
	for PC models: -4°F to 113°F (-20°C to 45°C)					
L-70 Life	> 50,000 hrs	Dimming compatible controls				
Optical system		Brand	Lutron		Leviton	
Color temperature	3CCT switch (3,000/4,000/5,000 K), 3,000 K by default	Models	MACL-153MLH-WH	DVCL-153PR	R02-DW6HD-2RW	DSL06
			STCL-153PH-WH	P-PKG1W	R00-RNL06-0TW	
			PD-6WCL-WH-R		R68-06674-P0T	
Regular and voluntary certifications						
5-year limited warranty	cETLus certified 4001256					

PACKAGE CONTENTS:

Description	Q-ty
LED Outdoor Wall Sconce	1
Crossbar (A)	1
Mounting screw (B)	2
Wire nut (C)	3
Black screw (D)	4
Photocell cap (E) only for PC models	1
Box	1



BUILT-IN PHOTOCELL INFORMATION

Specifications	
Light level to turn ON	30 ~ 150 lux (2.8 - 14 fc)
Light level to turn OFF	200 ~ 800 lux (18.6 - 74.4 fc)
Operating temperature	-4°F to 122°F (-20°C to 50°C)

The dusk-to-dawn sensor automatically turns the fixture off during daylight hours.

INSTALLATION GUIDE

IMPORTANT SAFETY INFORMATION:

Please read all the instructions below before installation.

- ▶ Make sure that the supply voltage corresponds to the rated product voltage.
- ▶ The product must be installed by a qualified electrician in accordance with the National Electrical Code and corresponding local codes.
- ▶ If the product is damaged, do not use it.

⚠ WARNING

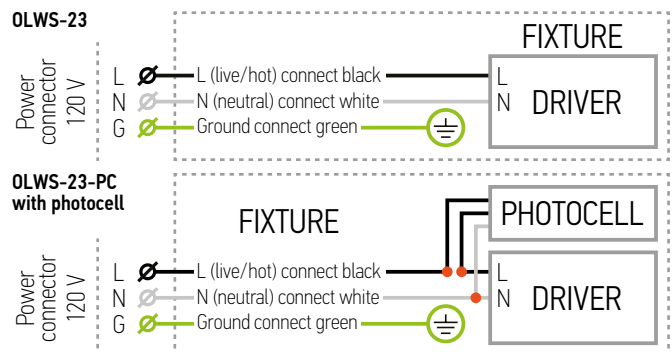
RISK OF PERSONAL INJURY – READ and follow all WARNINGS and installation instructions. Keep or give to the owner for future reference.
Risk of cuts: Wear gloves to prevent cuts or abrasions when removing from carton, handling, installing, and maintaining this product.

Risk of electric shock: This product must be installed in accordance with the applicable installation code by a person familiar with the construction and operation of the product and the hazards involved.

Risk of Fire: Minimum 194°F supply conductors. Consult a qualified electrician to ensure correct branch circuit conductor.

ASD® assumes no responsibility for claims arising out of improper or careless installation or handling of this product.

ELECTRICAL SCHEMATIC DIAGRAM:



For most up-to-date spec sheets please refer to asd-lighting.com

ASD LIGHTING CORP

E-mail: orders@asd-lighting.com | Web site: www.asd-lighting.com

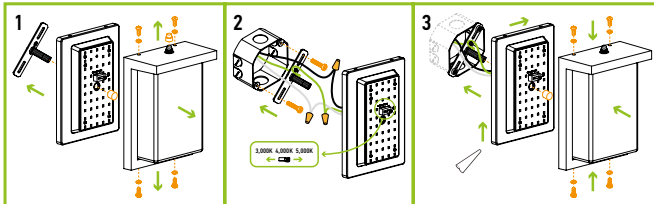




LED OUTDOOR WALL SCONCE

INSTALLATION STEPS:

1. Remove the lens from the fixture body. In models with photocell option remove the photocell cap to make the dusk-to-dawn sensor operate.
2. Attach the crossbar to the outlet box using mounting screws. Place the fixture body over the outlet box onto the mounting nipple and adjust it by tightening inward or out from the mounting bracket. Secure the fixture body position with cap nut. Connect the wires: Black to Black, White to White, Green to Green. Secure the connection with wire nuts. Choose needed color temperature by adjusting the switch position.
3. Reattach the lens to the fixture body using 4 screws. For outdoor locations please use silicone (not included) shown in the picture below.



* This fixture is not rated for heavy salt water exposure or high salt content in the air. It may cause parts of the fixture to Rust. Will void the warranty of the fixture if installed in a coastal area.

ANNEX 1

Model	Watts	3,000 K	4,000 K	5,000 K
ASD-OLWS-23-8D12CC-WH ASD-OLWS-23-8D12CC-BZ ASD-OLWS-23-8D12CC-BK	12W	805 lm	909 lm	842 lm
ASD-OLWS-23-14D20CC-WH ASD-OLWS-23-14D20CC-BZ ASD-OLWS-23-14D20CC-BK ASD-OLWS-23-14N20CC-PC-BZ ASD-OLWS-23-14N20CC-PC-BK	20W	1,703 lm	1,909 lm	1,758 lm

For most up-to-date spec sheets please refer to asd-lighting.com

ASD LIGHTING CORP

E-mail: orders@asd-lighting.com | Web site: www.asd-lighting.com

