

Preliminary Landscape Plan

Polo Club

Naperville, Illinois

June 4, 2018

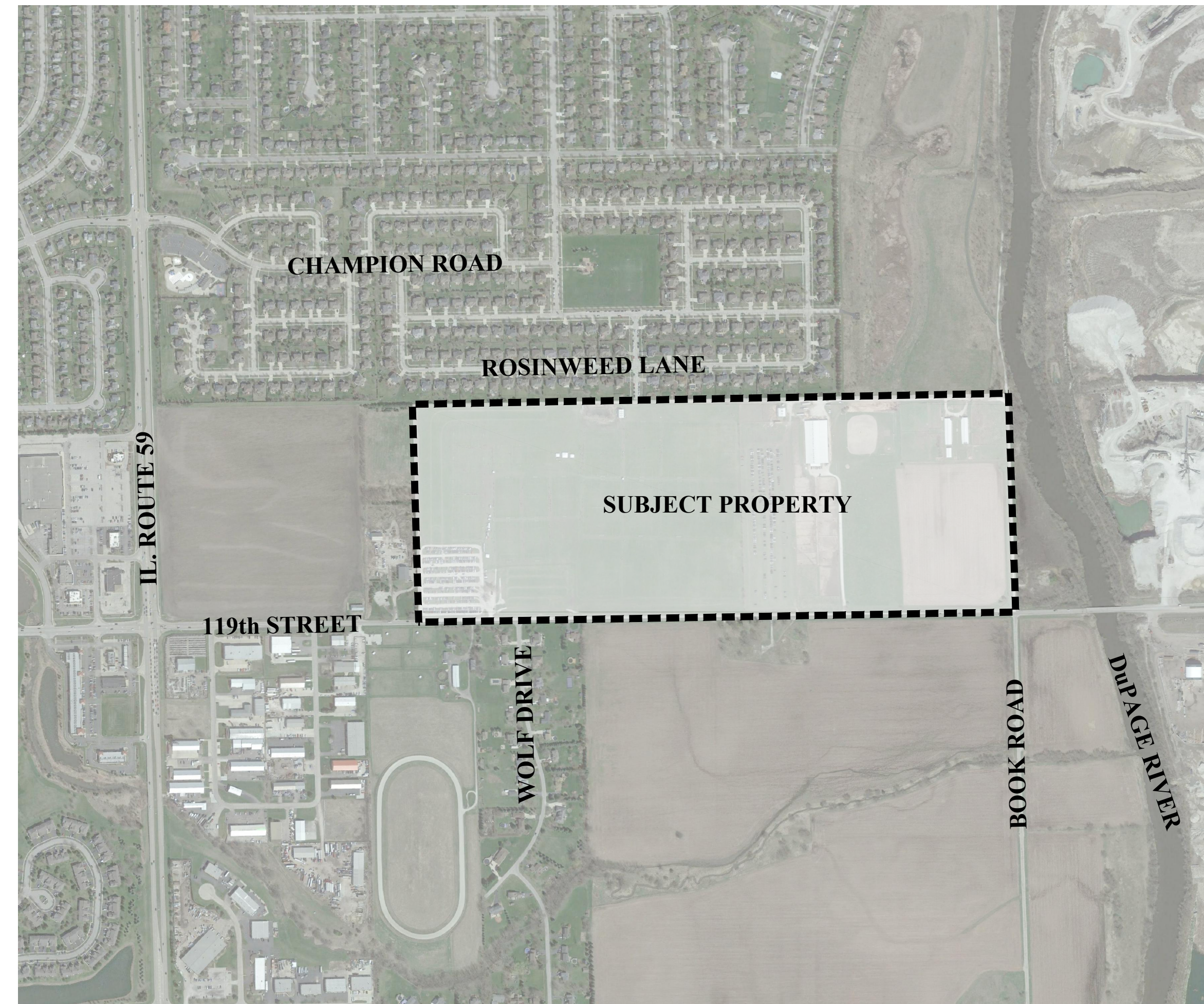
CONSULTANTS:



LANDSCAPE ARCHITECT:
GARY R. WEBER ASSOCIATES, INC
212 SOUTH MAIN STREET
WHEATON, ILLINOIS 60187



CIVIL ENGINEER:
CEMCON, LTD.
2280 WHITE OAK CIRCLE, SUITE 100
AURORA, ILLINOIS 60502



LOCATION MAP

SCALE: 1"=600'

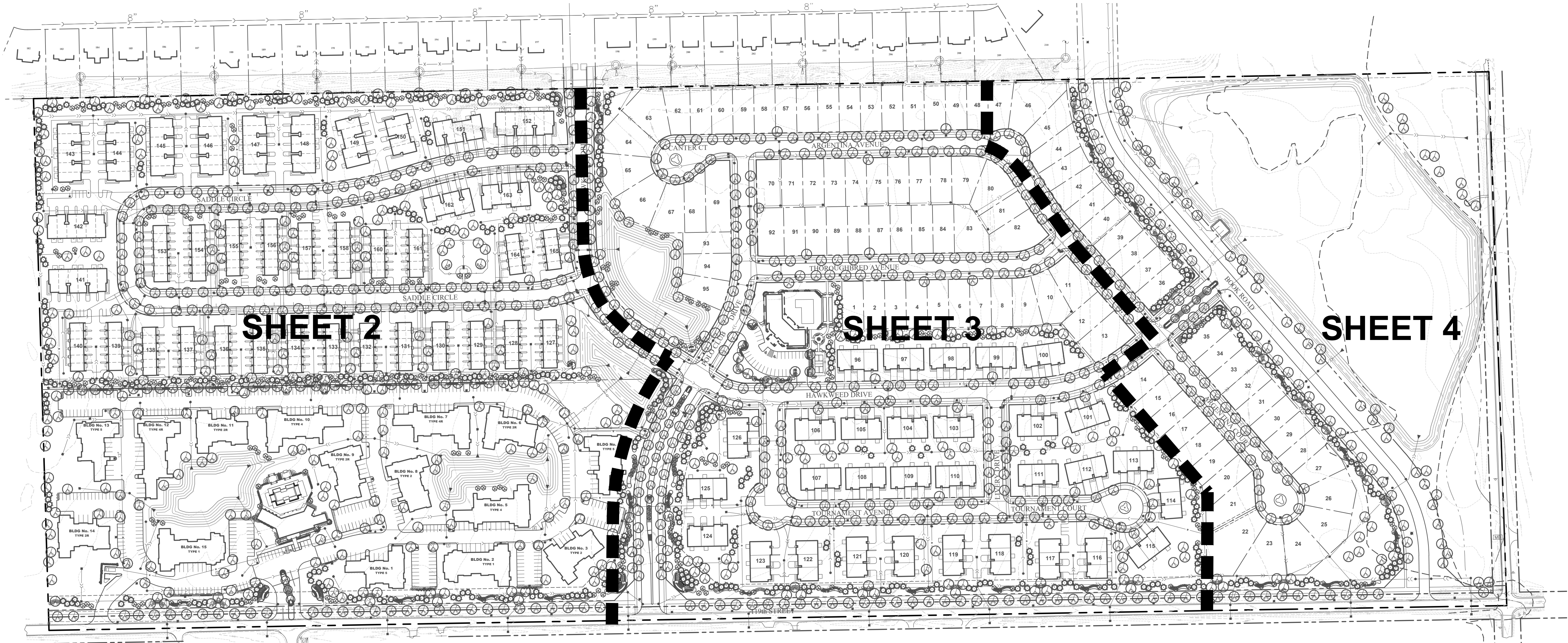
INDEX OF SHEETS

<u>SHEET NO.</u>	<u>DESCRIPTION</u>
0	COVER SHEET
1	OVERALL LANDSCAPE PLAN
2	PRELIMINARY LANDSCAPE PLAN
3	PRELIMINARY LANDSCAPE PLAN
4	PRELIMINARY LANDSCAPE PLAN
5	LANDSCAPE DETAILS
6	LANDSCAPE DETAILS
7	TYPICAL FOUNDATION LANDSCAPE PLANS
8	TREE PRESERVATION PLAN



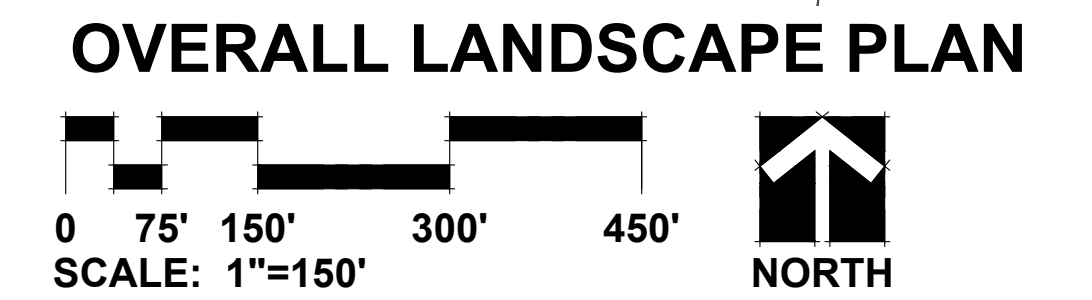
GENERAL NOTES

- TREES SHALL BE INSTALLED A MINIMUM OF FIVE (5) FEET HORIZONTALLY FROM UNDERGROUND ELECTRICAL FEEDERS, SANITARY SEWERS, SANITARY SERVICES, WATER MAINS, AND WATER SERVICES. TREES SHALL BE INSTALLED A MINIMUM OF TEN (10) FEET HORIZONTALLY FROM UTILITY STRUCTURES AND APPURTENANCES, INCLUDING, BUT NOT LIMITED TO, MANHOLES, VALVE VAULTS, VALVE BOXES AND FIRE HYDRANTS. NO TREES, SHRUBS OR OBSTACLES WILL BE ALLOWED 10' IN FRONT OF, 5' ON THE SIDES, AND 7' TO THE REAR OF THE ELECTRICAL TRANSFORMER.
- LOCATION OF TREES MAY REQUIRE ADJUSTMENT BASED ON FINAL ENGINEERING PLANS.
- CONTRACTOR SHALL VERIFY UNDERGROUND UTILITY LINES AND IS RESPONSIBLE FOR ANY DAMAGE.
- CONTRACTOR SHALL VERIFY ALL EXISTING CONDITIONS IN THE FIELD PRIOR TO CONSTRUCTION AND SHALL NOTIFY LANDSCAPE ARCHITECT OF ANY VARIANCE.
- MATERIAL QUANTITIES SHOWN ARE FOR CONTRACTOR'S CONVENIENCE ONLY. THE CONTRACTOR MUST VERIFY ALL MATERIAL AND SUPPLY SUFFICIENT MATERIALS TO COMPLETE THE JOB PER PLAN.
- THE LANDSCAPE ARCHITECT RESERVES THE RIGHT TO INSPECT TREES AND SHRUBS EITHER AT PLACE OF GROWTH OR AT SITE BEFORE PLANTING, FOR COMPLIANCE WITH REQUIREMENTS OF VARIETY, SIZE AND QUALITY.
- WORK SHALL CONFORM TO AMERICAN STANDARD FOR NURSERY STOCK, STATE OF ILLINOIS HORTICULTURAL STANDARDS, AND LOCAL MUNICIPAL REQUIREMENTS.
- CONTRACTOR SHALL SECURE AND PAY FOR ALL PERMITS, FEES, AND INSPECTIONS NECESSARY FOR THE PROPER EXECUTION OF THIS WORK AND COMPLY WITH ALL CODES APPLICABLE TO THIS WORK.
- SEE GENERAL CONDITIONS AND SPECIFICATIONS FOR LANDSCAPE WORK FOR ADDITIONAL REQUIREMENTS.



REPRESENTATIVE PLANT LIST

Key	Botanical/Common Name	Size	Remarks	Key	Botanical/Common Name	Size	Remarks	Key	Botanical/Common Name	Size	Remarks
	SHADE TREES				EVERGREEN TREES				PERENNIALS AND ORNAMENTAL GRASSES		
	Acer x freemanii AUTUMN BLAZE MAPLE	2 1/2" Cal.			Abies concolor WHITE FIR	6' Tall			Coreopsis verticillata 'Zagreb' ZAGREB COREOPSIS	#1	18" O.C.
	Acer saccharum 'Green Mountain' GREEN MOUNTAIN SUGAR MAPLE	2 1/2" Cal.			Picea glauca 'Densata' BLACK HILLS SPRUCE	6' Tall			Hosta sieboldiana 'Frances Williams' FRANCES WILLIAMS HOSTA	#1	24" O.C.
	Celtis occidentalis COMMON HACKBERRY	2 1/2" Cal.			Picea pungens GREEN COLORADO SPRUCE	6' Tall			Hemerocallis 'Happy Returns' HAPPY RETURNS DAYLILY	#1	18" O.C.
	Gleditsia triacanthos var. inermis 'Skycole' SKYLINE HONEYLOCUST	2 1/2" Cal.			Pinus strobus WHITE PINE	6' Tall			Liatris spicata 'Kobold' BLAZING STAR	#1	18" O.C.
	Platanus x acerifolia 'Exclamation' EXCLAMATION! LONDON PLANETREE	2 1/2" Cal.			Pseudotsuga menziesii DOUGLAS FIR	6' Tall			Miscanthus sinensis 'Gracillimus' MAIDEN GRASS	#3	36" O.C.
	Quercus bicolor SWAMP WHITE OAK	2 1/2" Cal.			DECIDUOUS SHRUBS				Pennisetum alopecuroides 'Hamelin' DWARF FOUNTAIN GRASS	#2	24" O.C.
	Quercus imbricaria SHINGLE OAK	2 1/2" Cal.			Cornus sericea 'Farrow' ARCTIC FIRE REDTWIG DOGWOOD	24" Tall	3' O.C.		Rudbeckia fulgida 'Goldsturm' BLACK-EYED SUSAN	#1	18" O.C.
	Tilia americana 'Redmond' REDMOND AMERICAN LINDEN	2 1/2" Cal.			Cotoneaster acutifolia PEKING COTONEASTER	30" Tall	4' O.C.		Salvia nemorosa 'East Friesland' EAST FRIESLAND SALVIA	#1	18" O.C.
	Ulmus carpinifolia 'New Horizon' NEW HORIZON SMOOTHLEAF ELM	2 1/2" Cal.			Itea virginica 'Sprich' LITTLE HENRY VIRGINIA SWEETSPIRE	24" Tall	3' O.C.		Sporobolus heterolepis PRAIRIE DROPSEED	#1	18" O.C.
	Ulmus 'Morton Glossy' TRIUMPH ELM	2 1/2" Cal.			Hydrangea macrophylla 'Bailmer' ENDLESS SUMMER HYDRANGEA	24" Tall	3' O.C.		GROUNDCOVERS		
	ORNAMENTAL TREES				Rosa 'Radcon' PINK KNOCKOUT ROSE	24" Tall	3' O.C.		Euonymus fortunei var. 'Coloratus' PURPLELEAF WINTERCREEPER	#SP4	12" O.C.
	Amelanchier grandiflora APPLE SERVICEBERRY	6' Tall	Multi-Stem		Syringa meyeri 'Palibin' DWARF KOREAN LILAC	24" Tall	4' O.C.		Vinca minor 'Dart's Blue' DART'S BLUE PERIWINKLE	#SP4	12" O.C.
	Betula nigra RIVER BIRCH	6' Tall	Multi-Stem		Viburnum dentatum ARROWWOOD VIBURNUM	30" Tall	5' O.C.				
	Cercis canadensis EASTERN REDBUD	6' Tall	Multi-Stem		Viburnum trilobum 'Hah's' HAH'S CRANBERRYBUSH VIBURNUM	30" Tall	4' O.C.				
	Cornus mas CORNELIANCHERRY DOGWOOD	6' Tall	Multi-Stem		EVERGREEN SHRUBS						
	Crataegus crus-galli inermis THORNLESS COCKSPUR HAWTHORN	6' Tall	Multi-Stem		Juniperus chinensis v. sargentii 'Viridis' GREEN SARGENT JUNIPER	24" Wide	5' O.C.				
	Malus 'Prairifire' PRAIRIFIRE CRABAPPLE	6' Tall	Multi-Stem		Juniperus chinensis 'Seagreen' SEA GREEN JUNIPER	30" Wide	4' O.C.				
	Syringa reticulata 'Ivory Silk' IVORY SILK JAPANESE TREE LILAC	6' Tall	Multi-Stem		Juniperus chinensis 'Kallays Compact' KALLAY COMPACT PFITZER JUNIPER	24" Wide	4' O.C.				



GRWA
GARY R. WEBER ASSOCIATES, INC.
 LAND PLANNING
 ECOLOGICAL CONSULTING
 LANDSCAPE ARCHITECTURE
 212 SOUTH MAIN STREET
 WHEATON, ILLINOIS 60187
 PHONE: 630-668-7197

CLIENTS
D.R. HORTON
America's Builder
 750 E. BUNKER COURT, SUITE 500
 VERNON HILLS, IL 60061
OCULUS DEVELOPMENT
 1202 W. MONROE STREET
 CHICAGO, IL 60607
 ENGINEER:
CEMCON, LTD.
 2280 WHITE OAK CIR, SUITE 100
 AURORA, ILLINOIS 60502

POLO CLUB
 NAPERVILLE, ILLINOIS
OVERALL LANDSCAPE PLAN

2	6.4.2018
1	5.15.18
REVISIONS	
DATE	03.26.18
PROJECT NO.	DR1705
DRAWN	MGM
CHECKED	JCT
SHEET NO.	



CITY PROJECT NUMBER: #18-1000022



GARY R. WEBER
ASSOCIATES, INC.
LAND PLANNING
ECOLOGICAL CONSULTING
LANDSCAPE ARCHITECTURE
212 SOUTH MAIN STREET
WHEATON, ILLINOIS 60187
PHONE: 630-668-7197

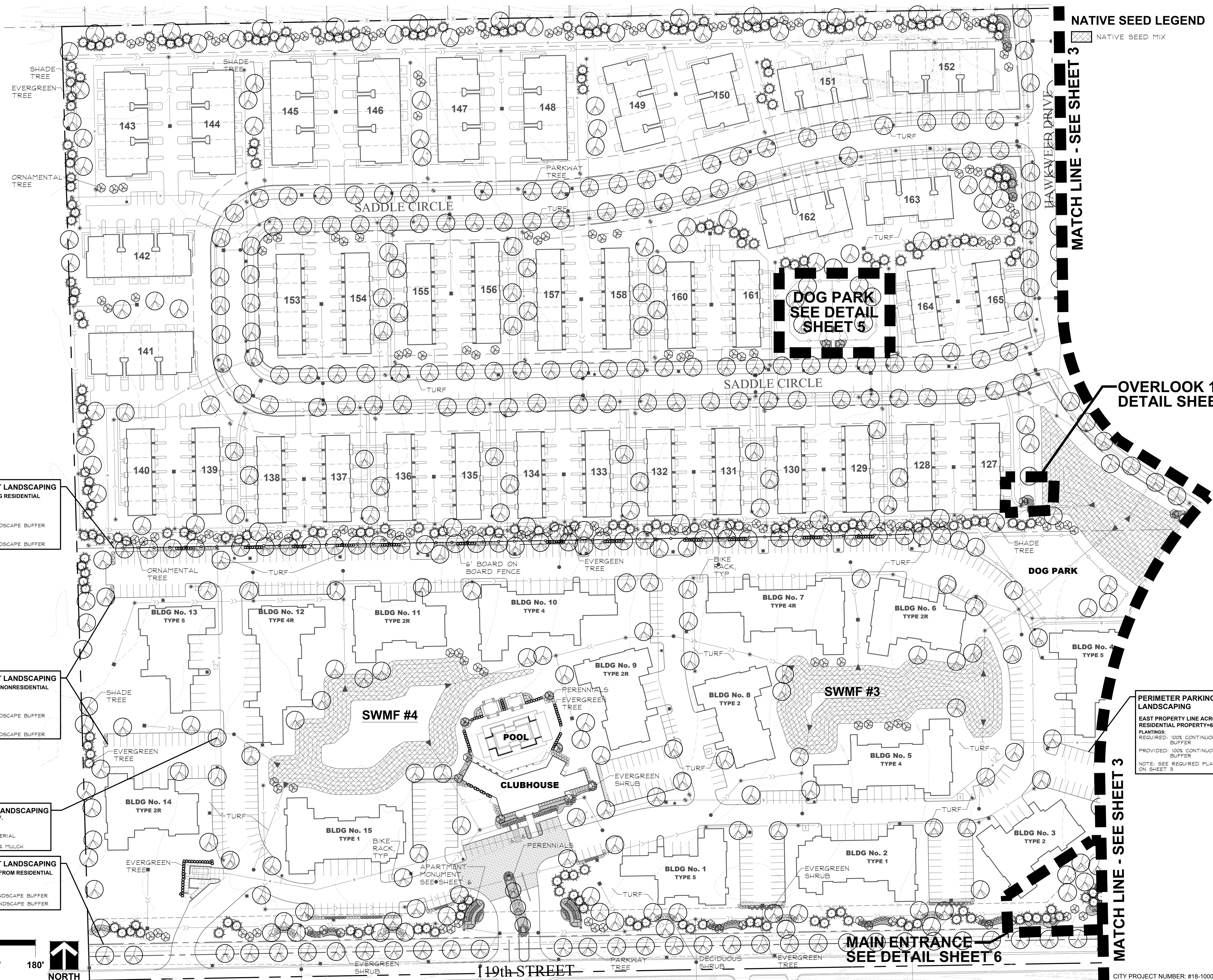
CLIENTS
D.R. HORTON
America's Builder
750 E. BUNKER COURT, SUITE 500
VERNON HILLS, IL 60061
OCULUS DEVELOPMENT
1202 W. MONROE STREET
CHICAGO, IL 60607
ENGINEER:
CEMCON, LTD.
2280 WHITE OAK CIR, SUITE 100
AURORA, ILLINOIS 60502

POLO CLUB
NAPERVILLE, ILLINOIS

PRELIMINARY LANDSCAPE PLAN

NATIVE SEED LEGEND

☒ NATIVE SEED MIX



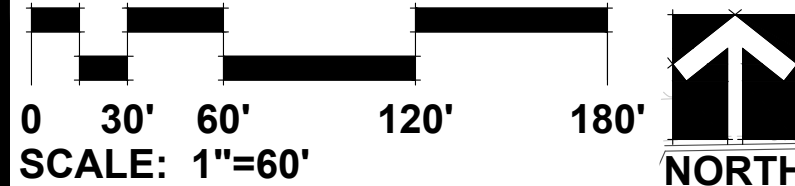
PERIMETER PARKING LOT LANDSCAPING
NORTH PROPERTY LINE ABUTTING RESIDENTIAL
PROPERTY=1203' OF PARKING
PLANTINGS:
REQUIRED: SOLID WOOD FENCE
34 SHADE TREES
50% CONTINUOUS LANDSCAPE BUFFER
PROVIDED: SOLID WOOD FENCE
34 SHADE TREES
50% CONTINUOUS LANDSCAPE BUFFER

PERIMETER PARKING LOT LANDSCAPING
WEST PROPERTY LINE ABUTTING NONRESIDENTIAL
PROPERTY=109' OF PARKING
PLANTINGS:
REQUIRED: 2 SHADE TREES
50% CONTINUOUS LANDSCAPE BUFFER
PROVIDED: 2 SHADE TREES
9 EVERGREEN TREES
50% CONTINUOUS LANDSCAPE BUFFER

INTERIOR PARKING LOT LANDSCAPING
PARKING ISLAND AREA = 8,320 S.F.
PLANTINGS:
REQUIRED: 64 SHADE TREES
50% LIVE PLANT MATERIAL
PROVIDED: 64 SHADE TREES
75% TURF GRASS, 25% MULCH

PERIMETER PARKING LOT LANDSCAPING
SOUTH PROPERTY LINE ACROSS FROM RESIDENTIAL
PROPERTY=578' OF PARKING
PLANTINGS:
REQUIRED: 100% CONTINUOUS LANDSCAPE BUFFER
PROVIDED: 100% CONTINUOUS LANDSCAPE BUFFER

PERIMETER PARKING LOT LANDSCAPING
EAST PROPERTY LINE ACROSS FROM
RESIDENTIAL PROPERTY=60' OF PARKING
PLANTINGS:
REQUIRED: 100% CONTINUOUS LANDSCAPE
BUFFER
PROVIDED: 100% CONTINUOUS LANDSCAPE
BUFFER
NOTE: SEE REQUIRED PLANTINGS
ON SHEET 3



2	6.4.2018
1	5.15.18
REVISIONS	

DATE	03.26.18
PROJECT NO.	DR1705
DRAWN	MGH
CHECKED	JCT
SHEET NO.	

2 OF 8

CITY PROJECT NUMBER: #18-10000022

NATIVE SEED LEGEND

☒ NATIVE SEED MIX

MATCH LINE - SEE SHEET 2

MATCH LINE - SEE SHEET 4

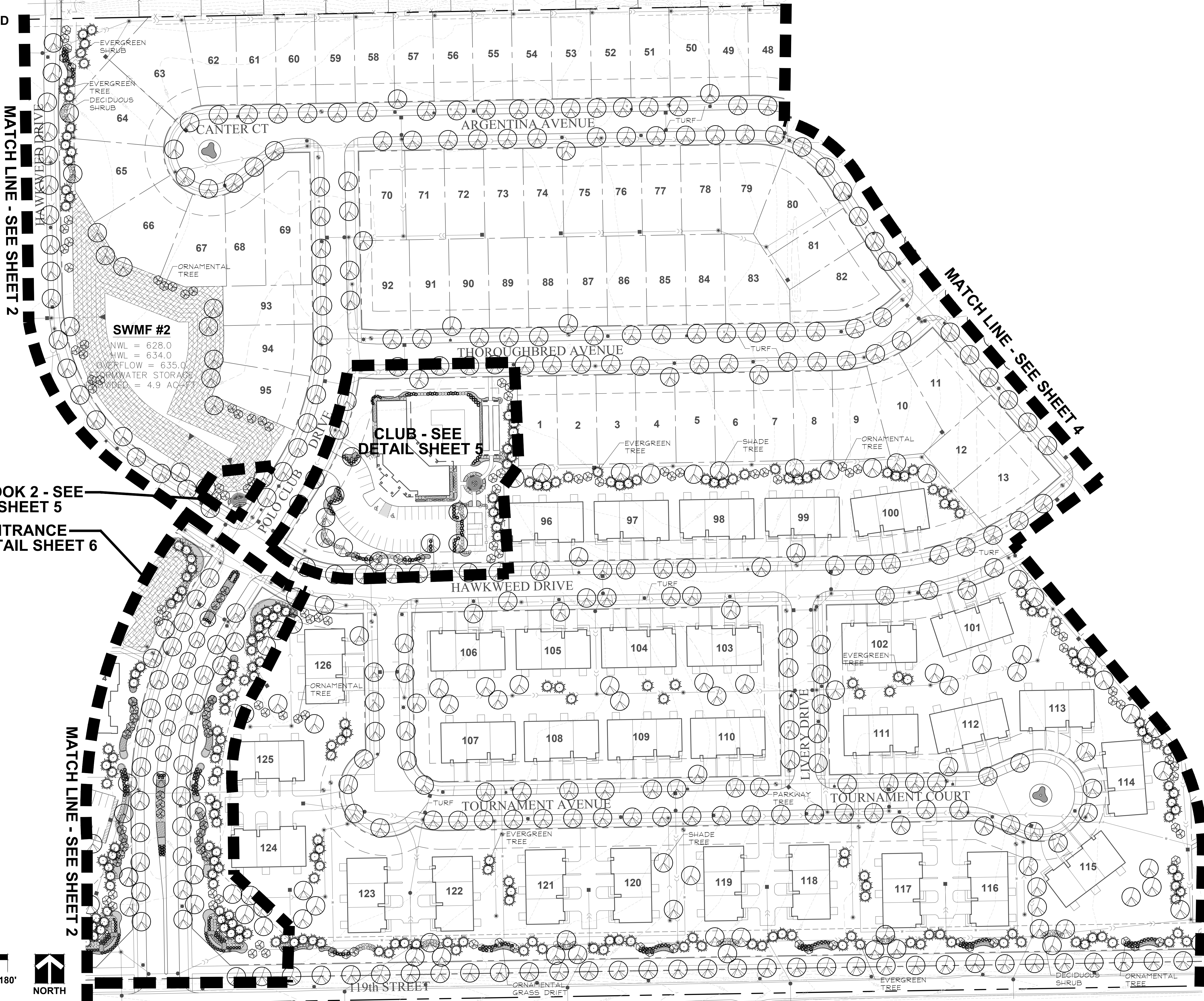
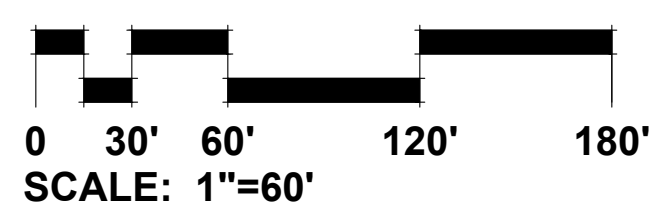
MATCH LINE - SEE SHEET 2

MATCH LINE - SEE SHEET 4

OVERLOOK 2 - SEE
DETAIL SHEET 5
MAIN ENTRANCE
SEE DETAIL SHEET 6

SWMF #2
NWL = 628.0
HWL = 634.0
OVERFLOW = 635.0
STORAGE STORAGE
AREA = 4.9 AC-FT

**CLUB - SEE
DETAIL SHEET 5**



**GARY R. WEBER
ASSOCIATES, INC.**
LAND PLANNING
ECOLOGICAL CONSULTING
LANDSCAPE ARCHITECTURE
212 SOUTH MAIN STREET
WHEATON, ILLINOIS 60187
PHONE: 630-668-7197

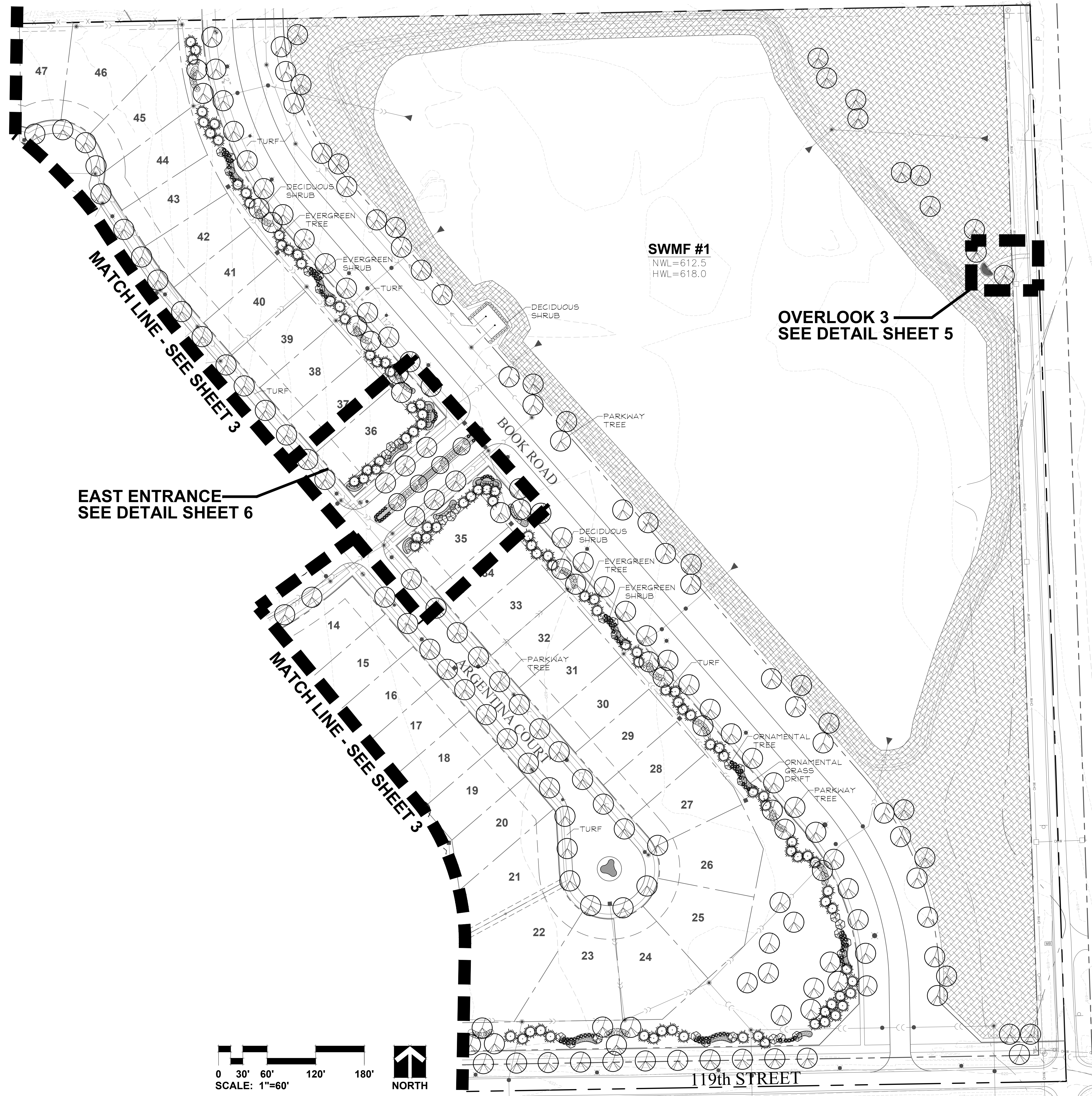
CLIENTS
D.R. HORTON
America's Builder
750 E. BUNKER COURT, SUITE 500
VERNON HILLS, IL 60061
OCULUS DEVELOPMENT
1202 W. MONROE STREET
CHICAGO, IL 60607
ENGINEER:
CEMCON, LTD.
2280 WHITE OAK CIR, SUITE 100
AURORA, ILLINOIS 60502

POLO CLUB
NAPERVILLE, ILLINOIS
PRELIMINARY LANDSCAPE PLAN

2	6.4.2018
1	5.15.18
REVISIONS	
DATE	03.26.18
PROJECT NO.	DR1705
DRAWN	MGM
CHECKED	JCT
SHEET NO.	
3 OF 8	

NATIVE SEED LEGEND

☒ NATIVE SEED MIX



GARY R. WEBER ASSOCIATES, INC.
 LAND PLANNING
 ECOLOGICAL CONSULTING
 LANDSCAPE ARCHITECTURE
 212 SOUTH MAIN STREET
 WHEATON, ILLINOIS 60187
 PHONE: 630-668-7197

CLIENTS
D.R. HORTON
America's Builder
 750 E. BUNKER COURT, SUITE 500
 VERNON HILLS, IL 60061
OCULUS DEVELOPMENT
 1202 W. MONROE STREET
 CHICAGO, IL 60607
 ENGINEER
CEMCON, LTD.
 2280 WHITE OAK CIR, SUITE 100
 AURORA, ILLINOIS 60502

POLO CLUB
 NAPERVILLE, ILLINOIS
PRELIMINARY LANDSCAPE PLAN

NO.	DATE	REVISIONS
2	6.4.2018	
1	5.15.18	

DATE 03.26.18
 PROJECT NO. DR1705
 DRAWN MGM
 CHECKED JCT
 SHEET NO.

4 OF 8



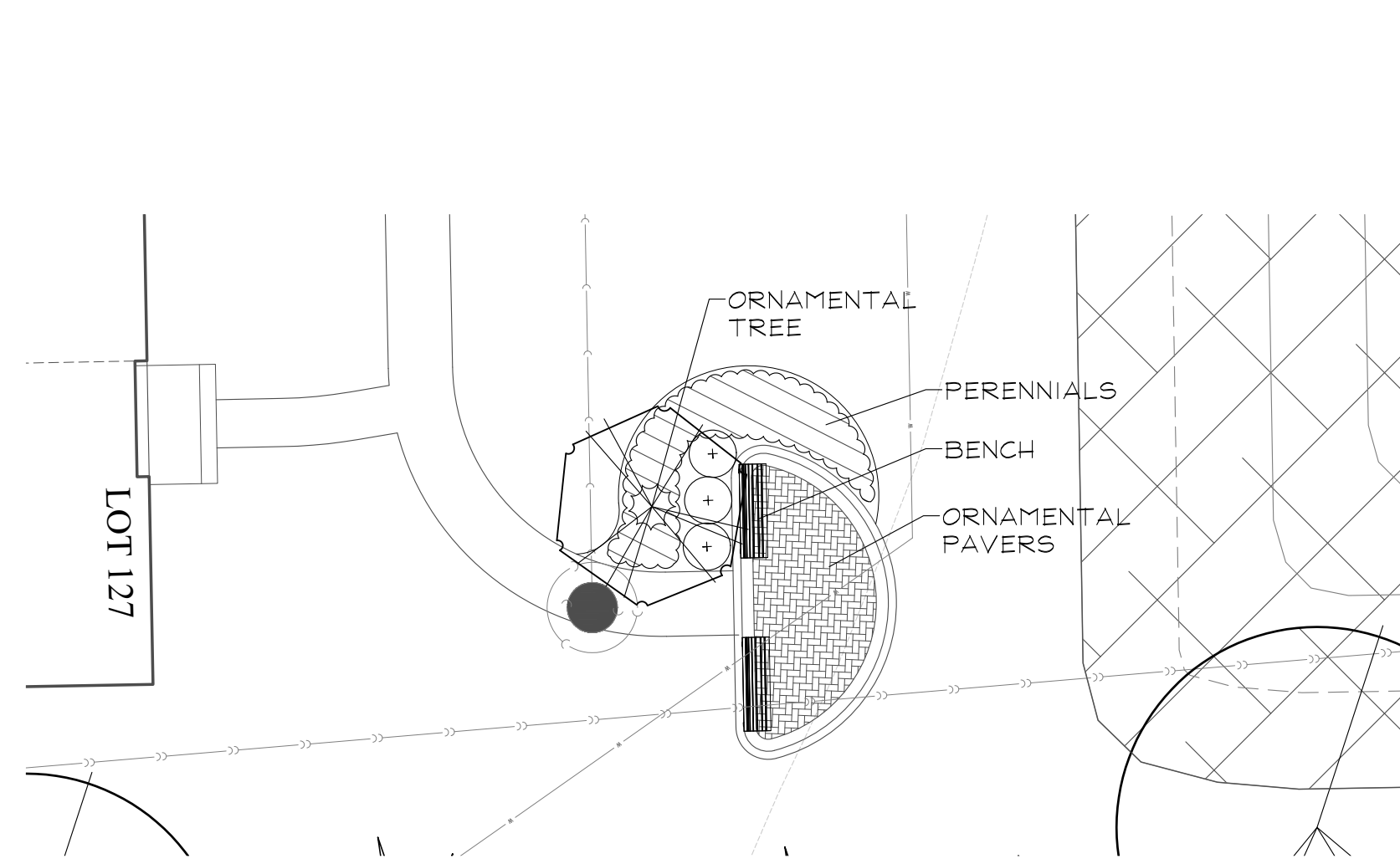
CITY PROJECT NUMBER: #18-1000022



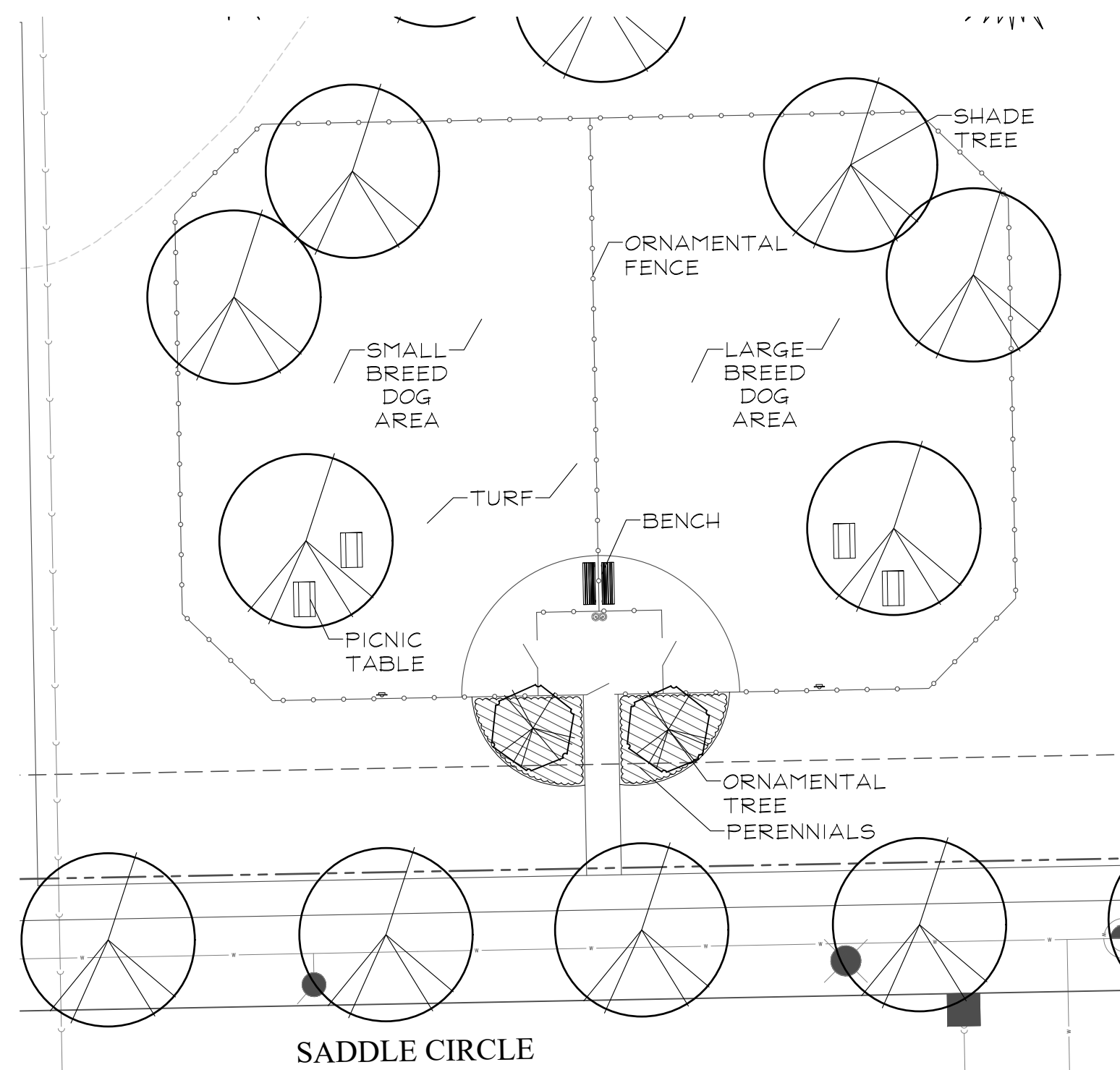
GARY R. WEBER
ASSOCIATES, INC.
LAND PLANNING
ECOLOGICAL CONSULTING
LANDSCAPE ARCHITECTURE
212 SOUTH MAIN STREET
WHEATON, ILLINOIS 60187
PHONE: 630-668-7197

CLIENTS
D·R·HORTON
America's Builder
750 E. BUNKER COURT, SUITE 500
VERNON HILLS, IL 60061
OCULUS DEVELOPMENT
1202 W. MONROE STREET
CHICAGO, IL 60607
ENGINEER: **CEMCON, LTD.**
2280 WHITE OAK CIR, SUITE 100
AURORA, ILLINOIS 60502

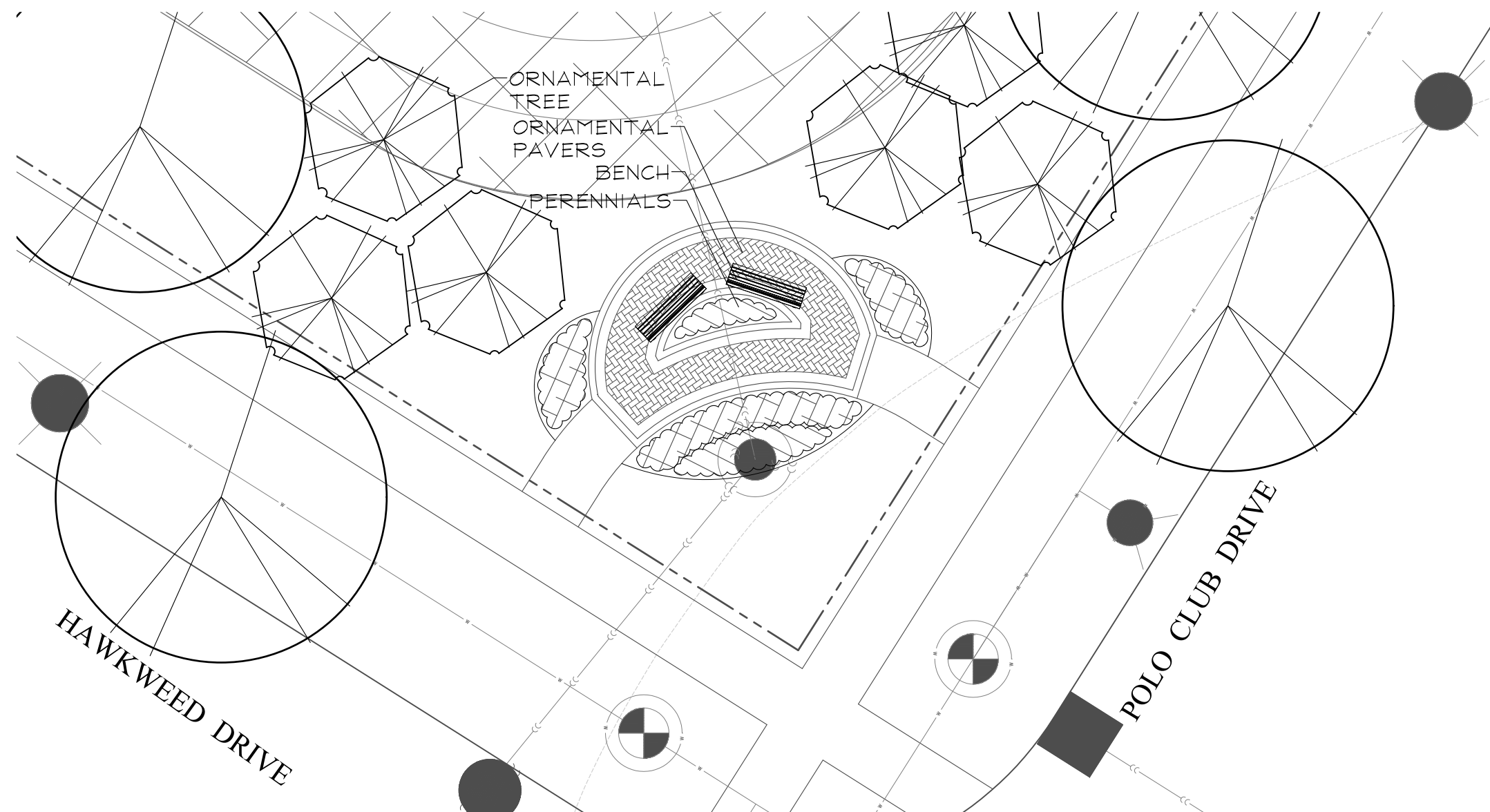
POLO CLUB
NAPERVILLE, ILLINOIS
LANDSCAPE DETAILS



OVERLOOK 1 LANDSCAPE DETAIL
SCALE: 1"=10'



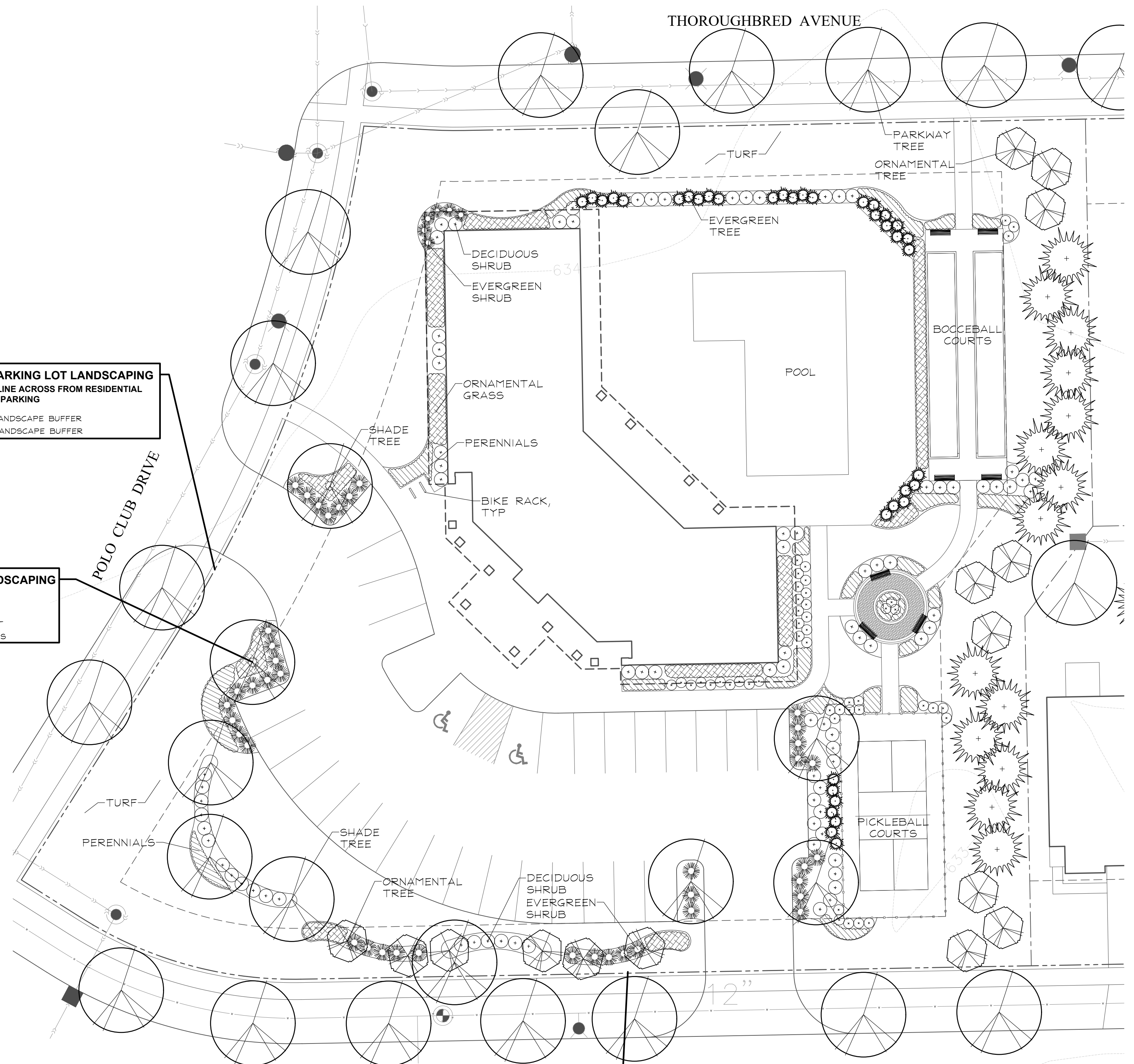
DOG PARK LANDSCAPE DETAIL
SCALE: 1"=20'



OVERLOOK 2 LANDSCAPE DETAIL
SCALE: 1"=10'

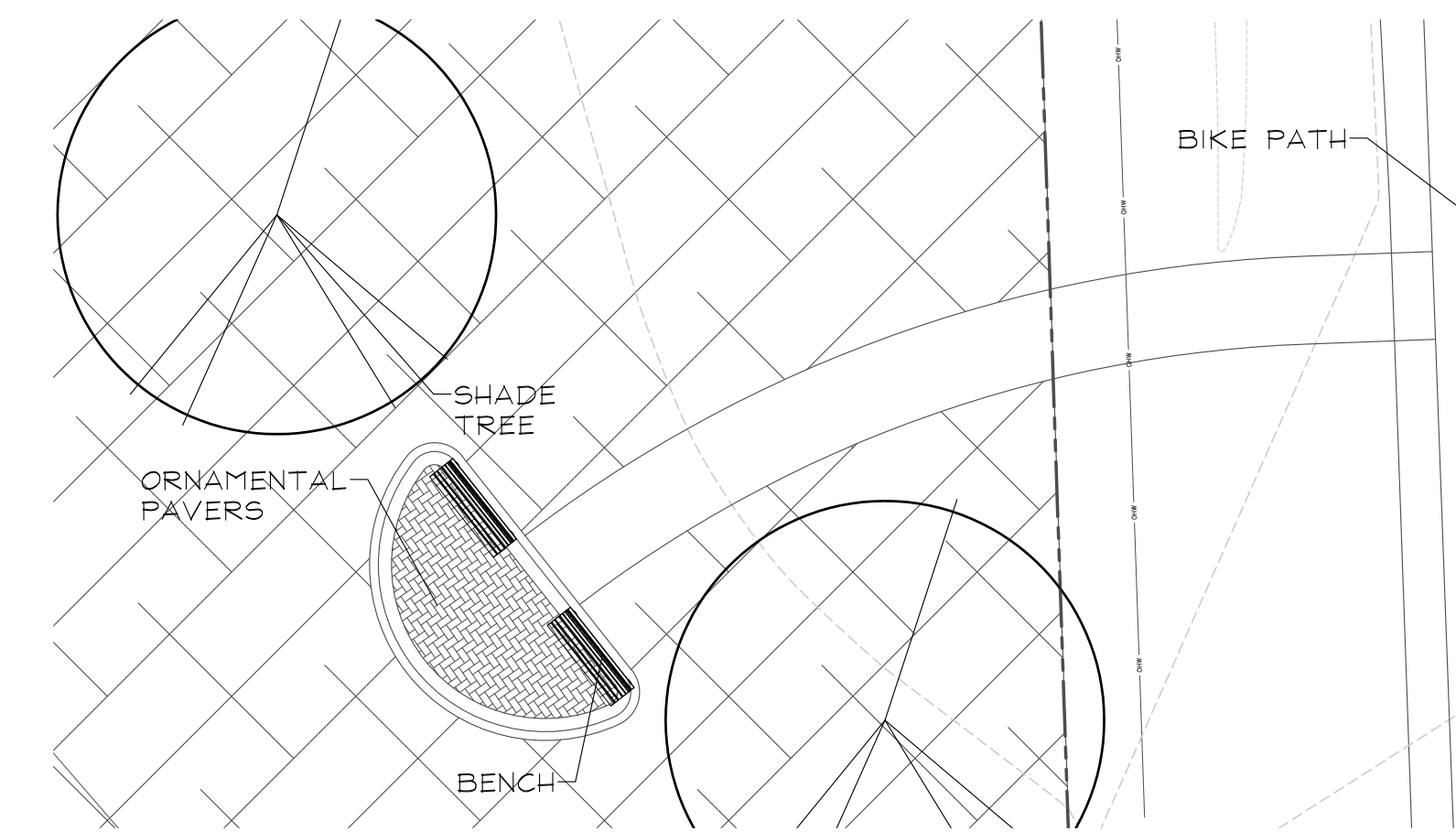
PERIMETER PARKING LOT LANDSCAPING
WEST PROPERTY LINE ACROSS FROM RESIDENTIAL
PROPERTY=63' OF PARKING
PLANTINGS:
REQUIRED: 100% LANDSCAPE BUFFER
PROVIDED: 100% LANDSCAPE BUFFER

INTERIOR PARKING LOT LANDSCAPING
PARKING ISLAND AREA = 650 S.F.
PLANTINGS:
REQUIRED: 5 SHADE TREES
50% LIVE PLANT MATERIAL
PROVIDED: 5 SHADE TREES
100% SHRUBS & PERENNIALS



CLUB LANDSCAPE DETAIL
0 10' 20' 40' 60'
SCALE: 1"=20'
NORTH

PERIMETER PARKING LOT LANDSCAPING
SOUTH PROPERTY LINE ACROSS FROM RESIDENTIAL
PROPERTY=206' OF PARKING
PLANTINGS:
REQUIRED: 100% LANDSCAPE BUFFER
PROVIDED: 100% LANDSCAPE BUFFER



OVERLOOK 3 LANDSCAPE DETAIL
SCALE: 1"=10'

2	6.4.2018
1	5.15.18

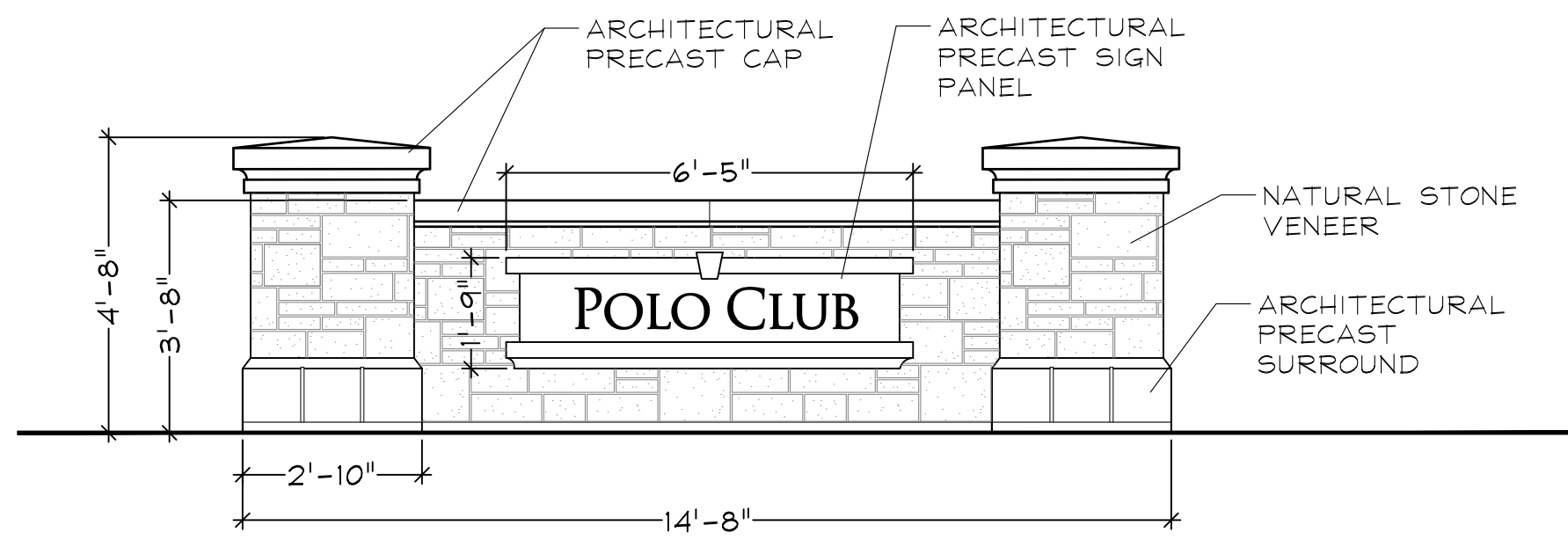
DATE	03.26.18
PROJECT NO.	DR1705
DRAWN	MGM
CHECKED	JCT
SHEET NO.	



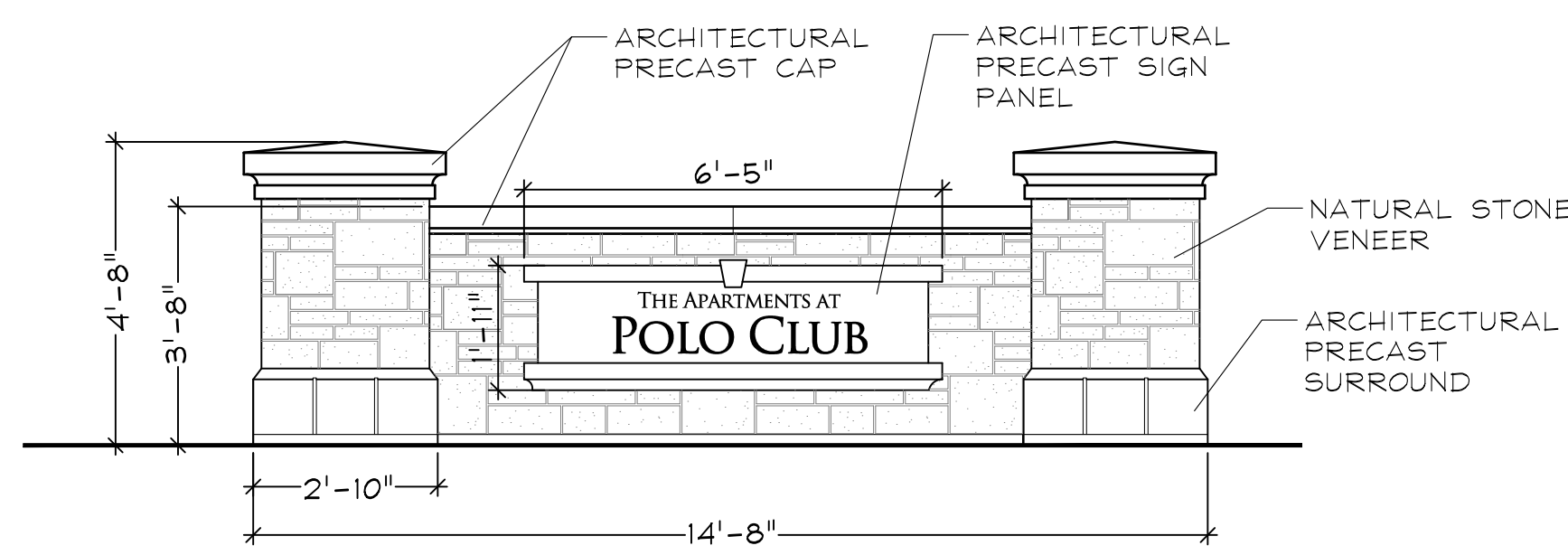


GARY R. WEBER ASSOCIATES, INC.
 LAND PLANNING
 ECOLOGICAL CONSULTING
 LANDSCAPE ARCHITECTURE
 212 SOUTH MAIN STREET
 WHEATON, ILLINOIS 60187
 PHONE: 630-668-7197

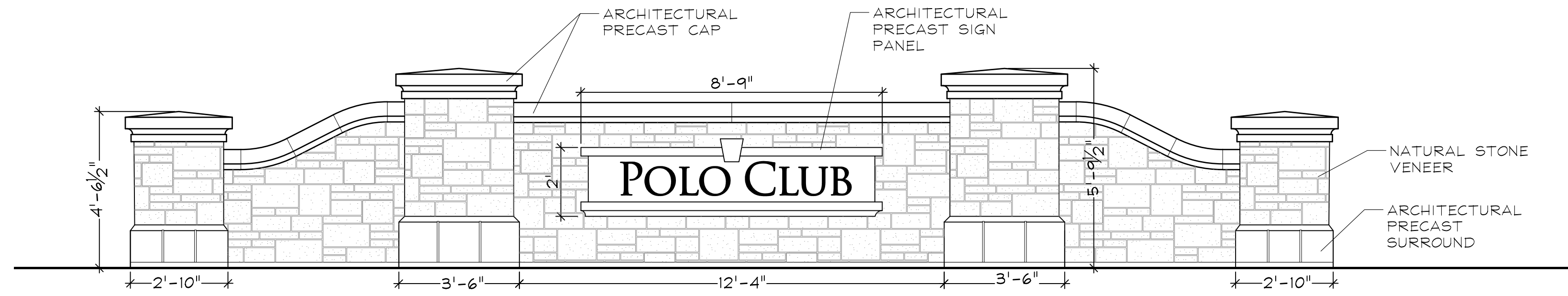
CLIENTS
D.R. HORTON
America's Builder
 750 E. BUNKER COURT, SUITE 500
 VERNON HILLS, IL 60061
OCULUS DEVELOPMENT
 1202 W. MONROE STREET
 CHICAGO, IL 60607
 ENGINEER:
CEMCON, LTD.
 2280 WHITE OAK CIR, SUITE 100
 AURORA, ILLINOIS 60502



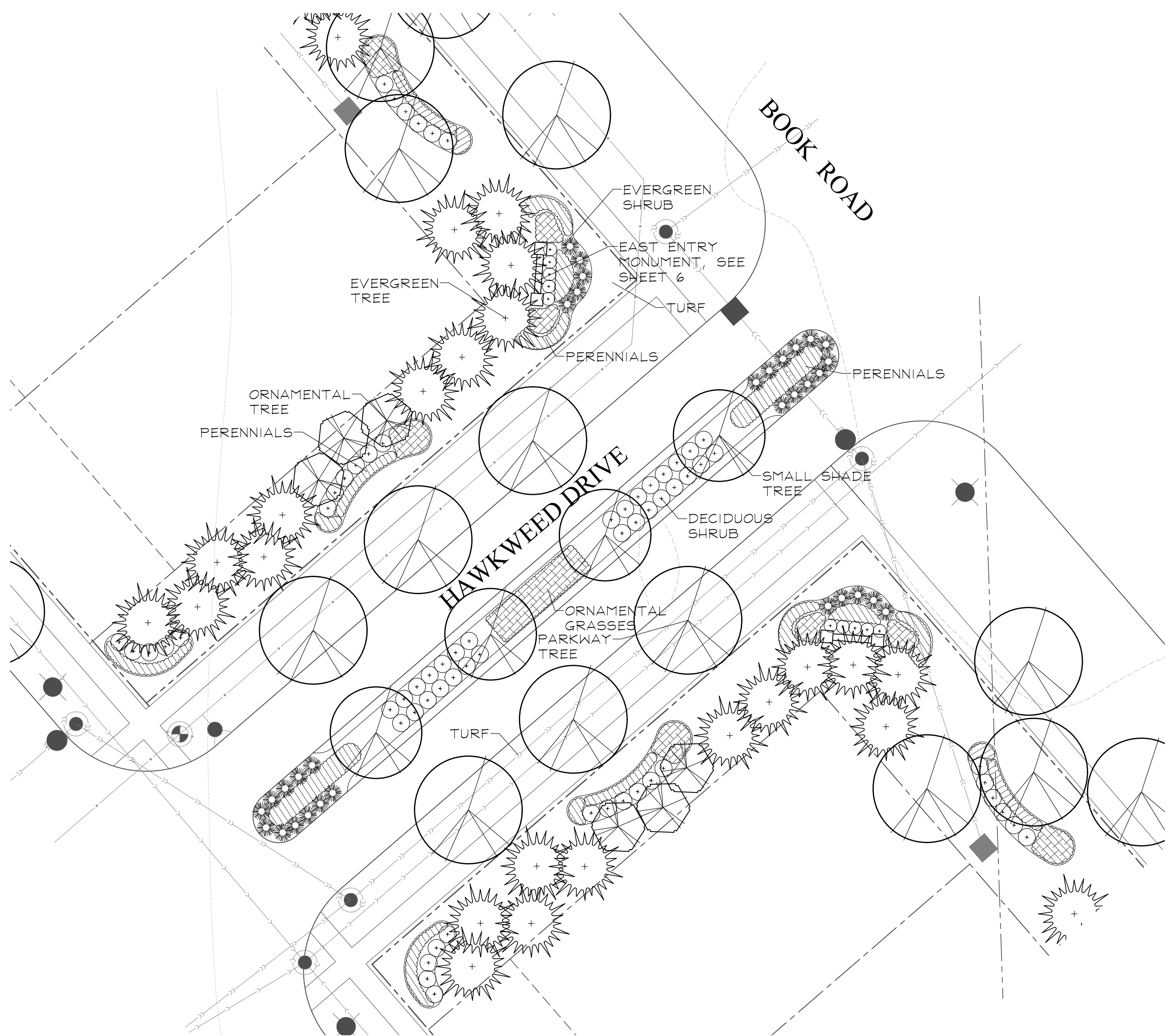
EAST ENTRY MONUMENT ELEVATION
 SCALE: 3/8"=1'



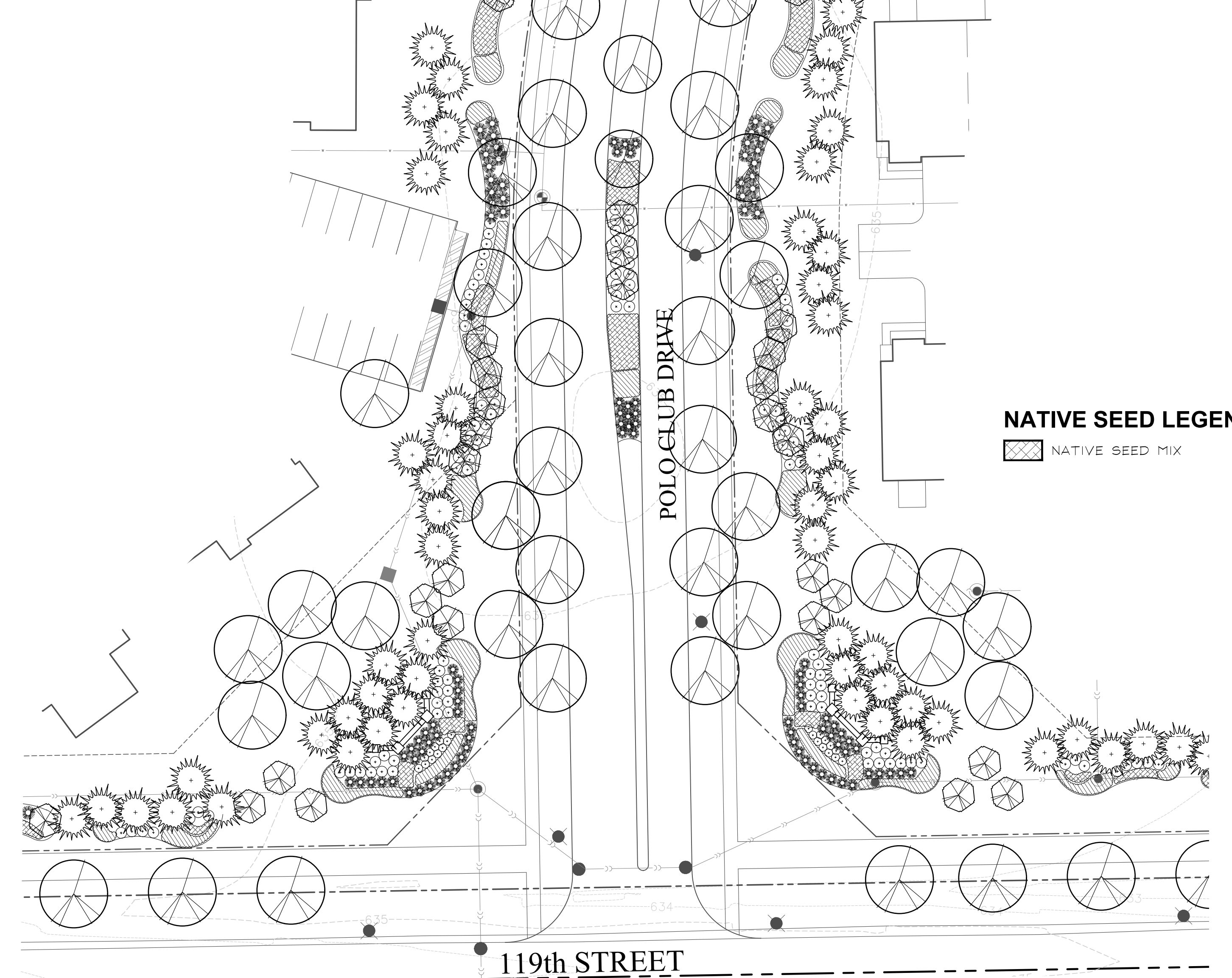
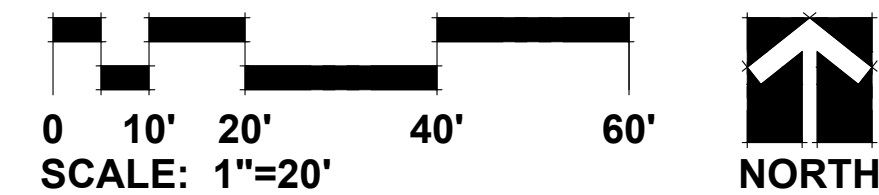
APARTMENT MONUMENT ELEVATION
 SCALE: 3/8"=1'



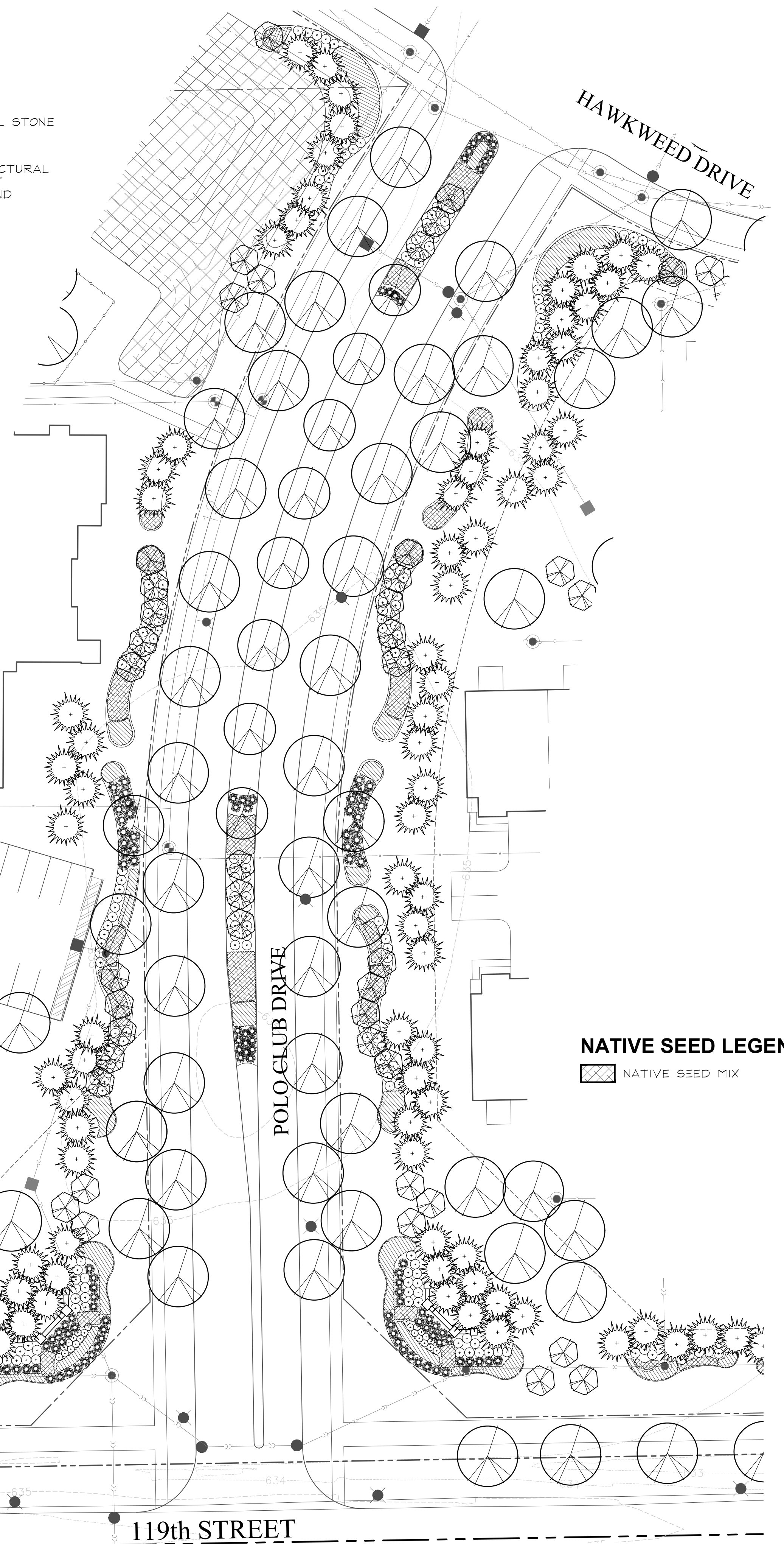
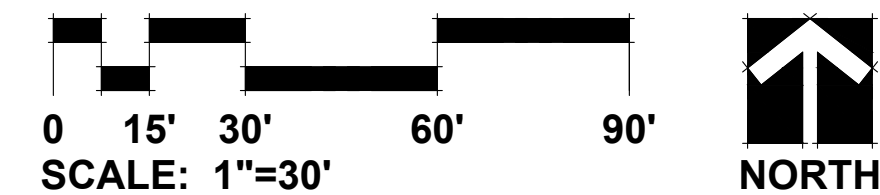
MAIN ENTRY MONUMENT ELEVATION
 SCALE: 3/8"=1'



EAST ENTRANCE LANDSCAPE DETAIL



MAIN ENTRANCE LANDSCAPE DETAIL



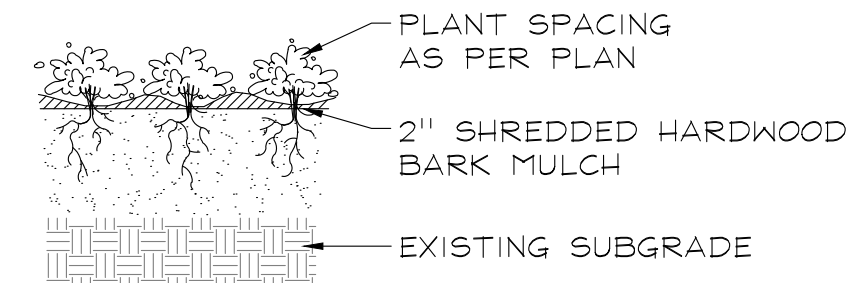
POLO CLUB
 NAPERVILLE, ILLINOIS
LANDSCAPE DETAILS

REVISIONS	DATE
2	6.4.2018
1	5.15.18

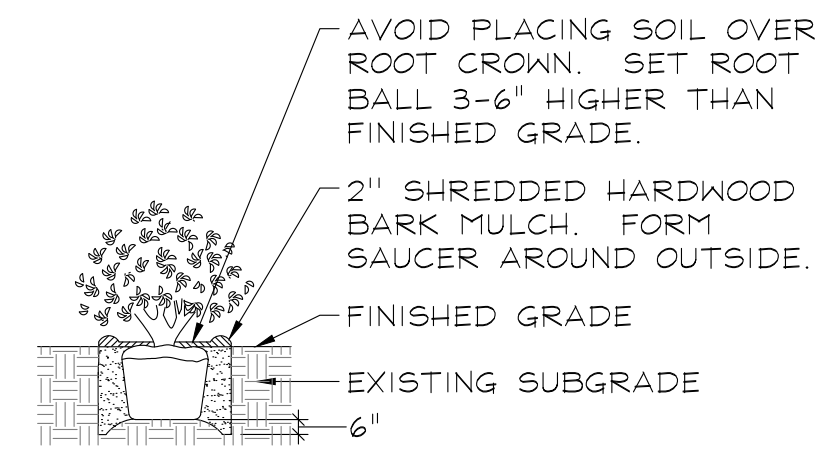
DATE: 03.26.18
 PROJECT NO.: DR1705
 DRAWN: MGM
 CHECKED: JCT
 SHEET NO.



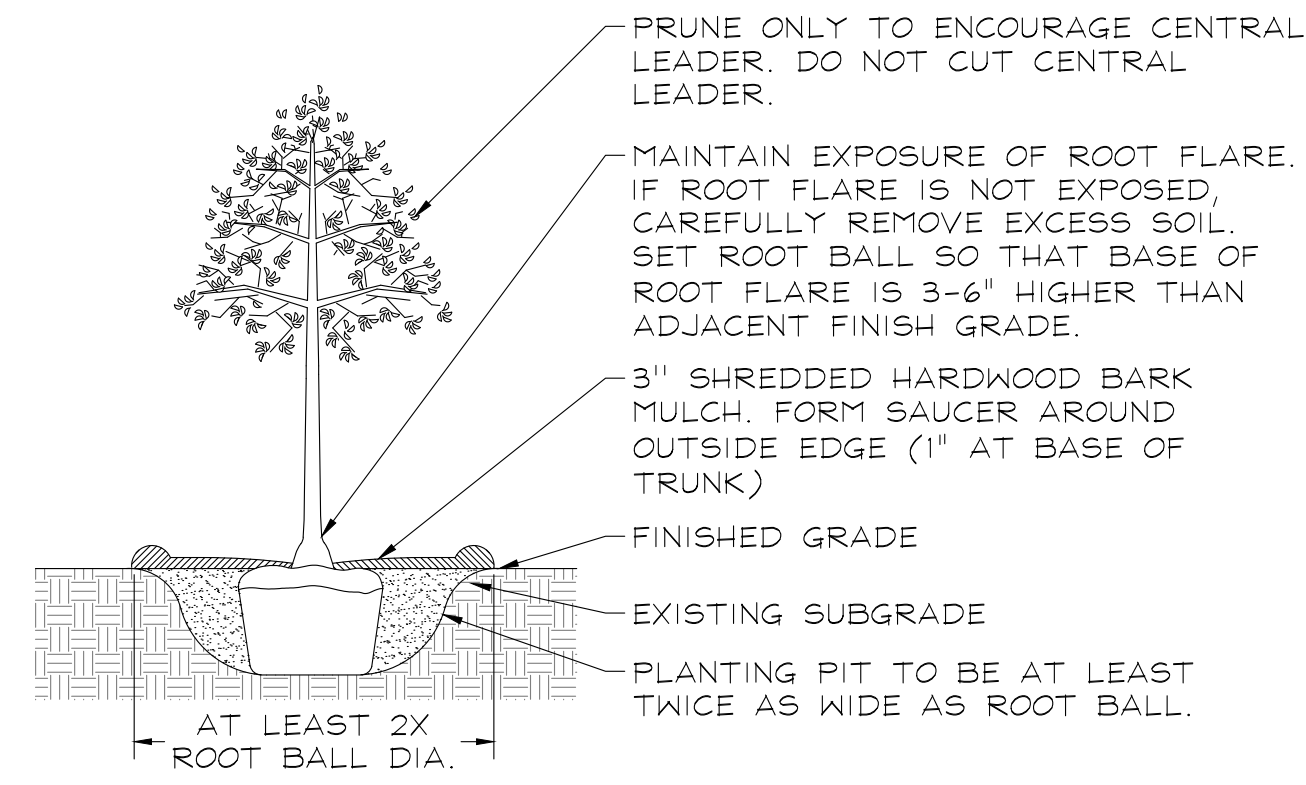
PLANTING DETAILS



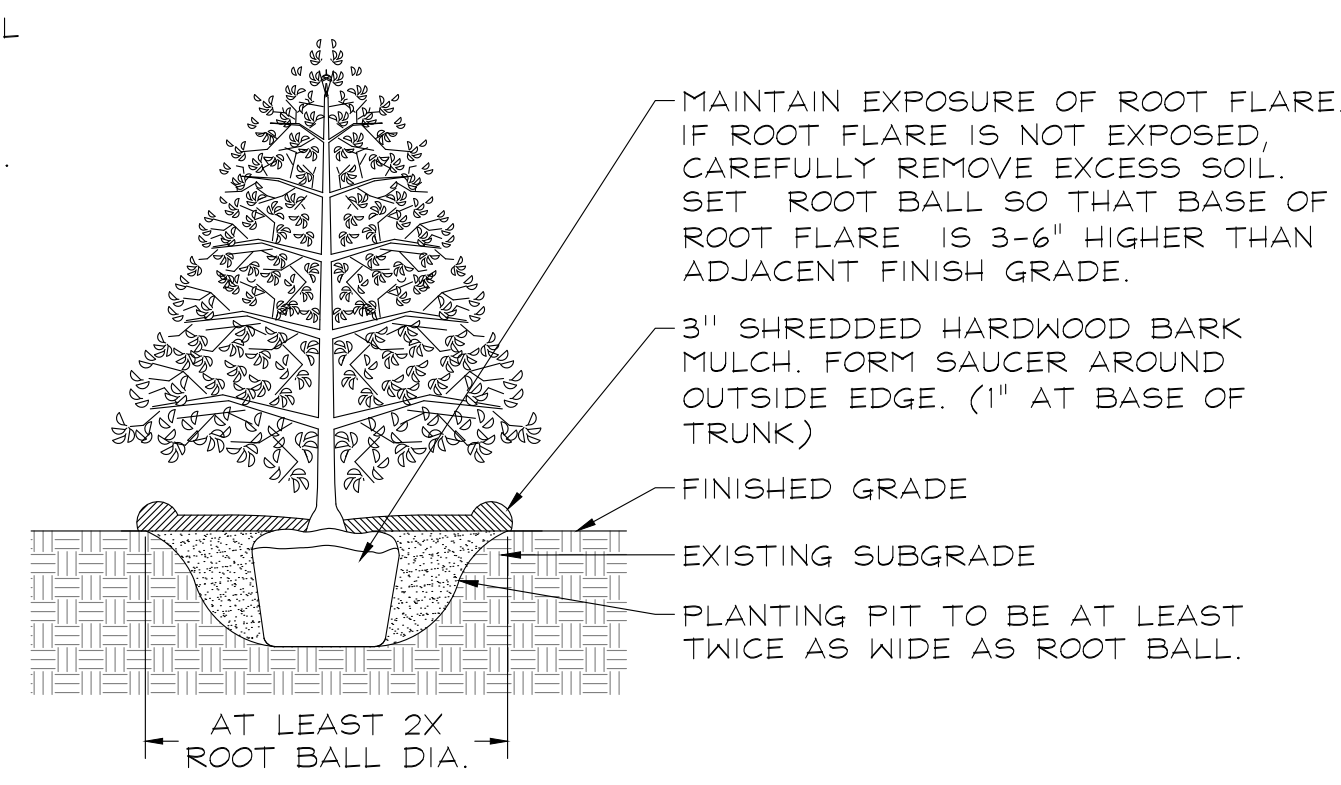
PERENNIALS AND GROUNDCOVERS NOT TO SCALE



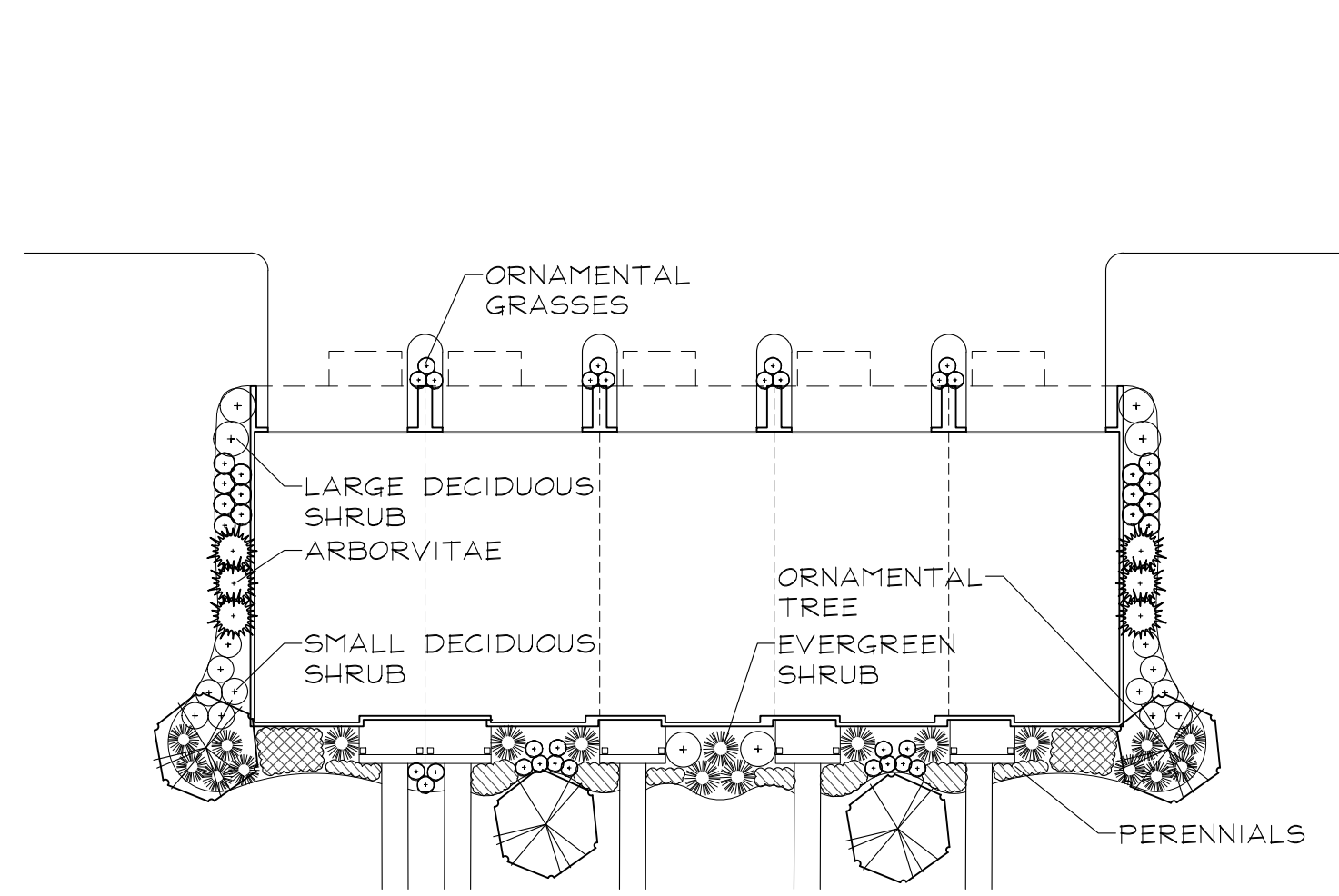
DECIDUOUS AND EVERGREEN SHRUBS NOT TO SCALE



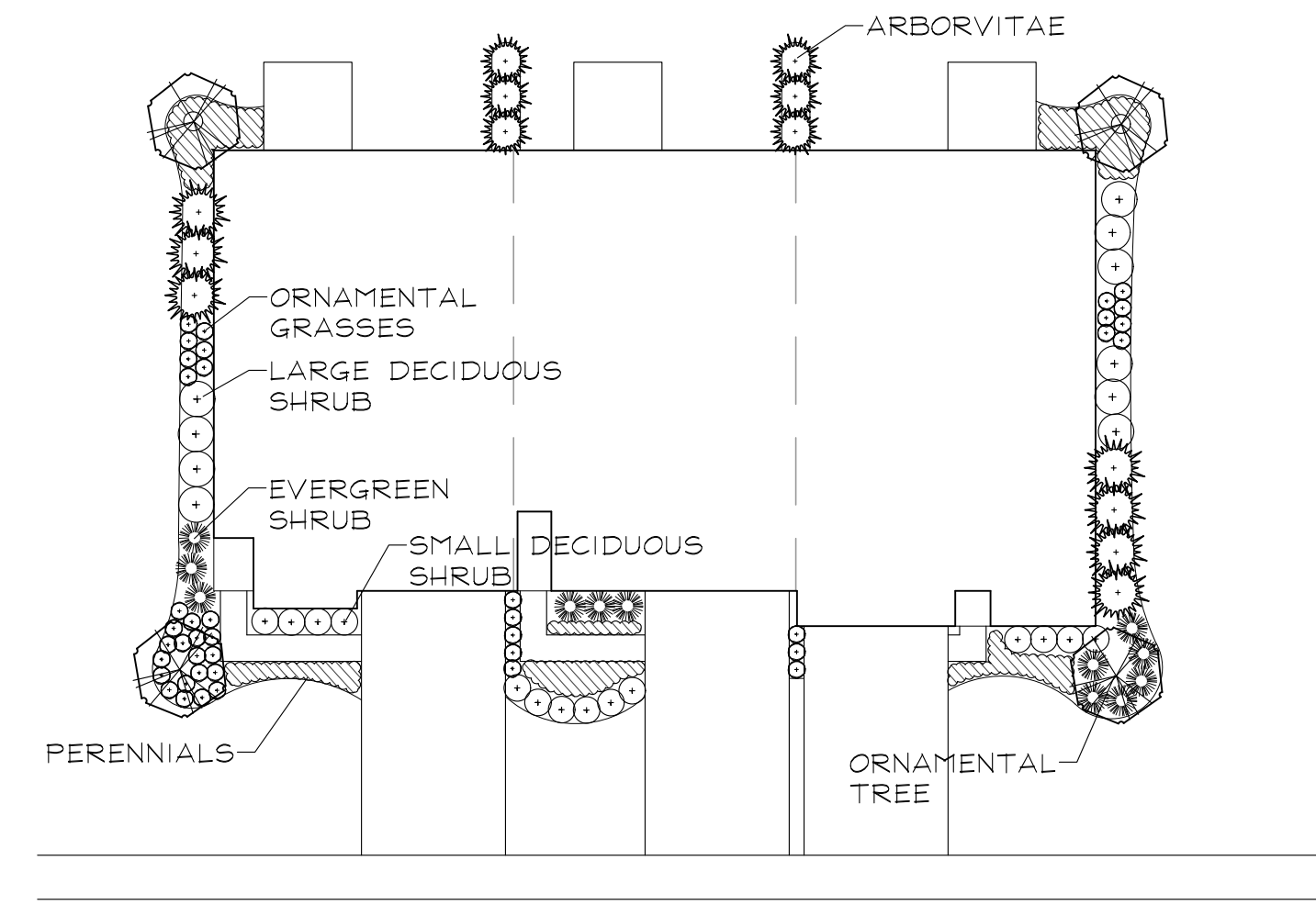
DECIDUOUS TREES NOT TO SCALE



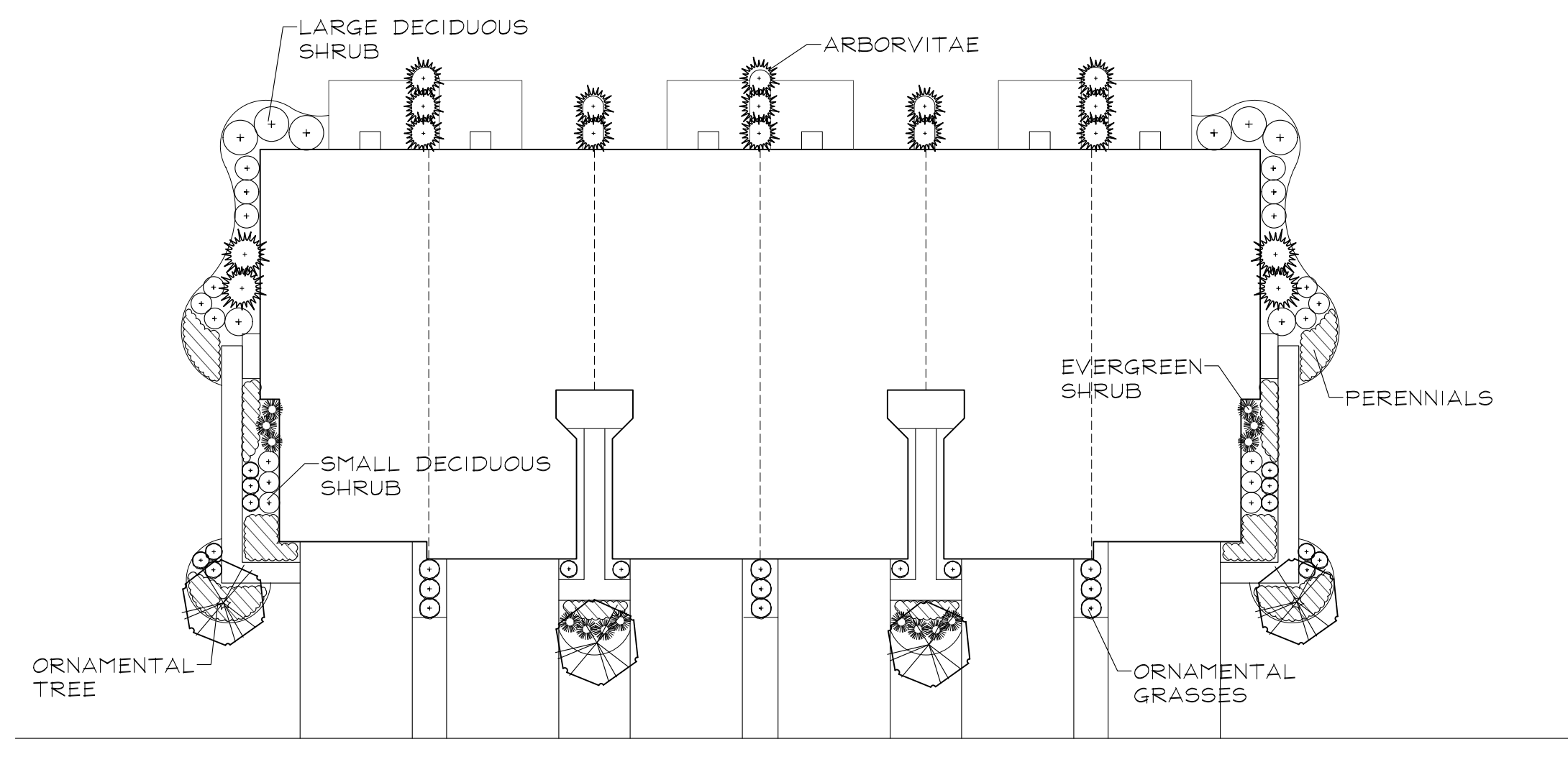
EVERGREEN TREES NOT TO SCALE



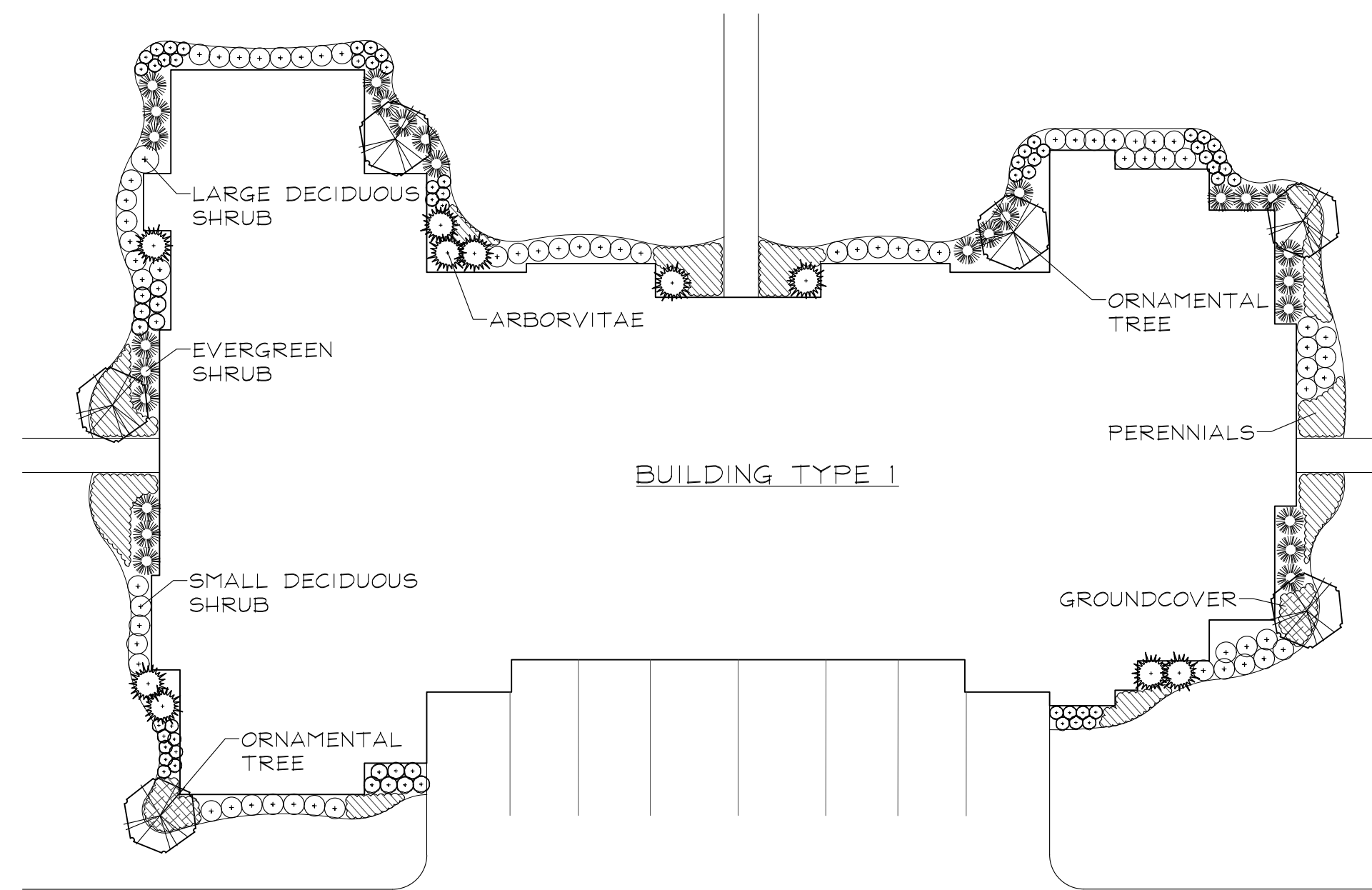
TYPICAL SEABOARD TOWNHOME FOUNDATION LANDSCAPE PLAN
SCALE: 1"=20'



TYPICAL AGE-TARGETED TOWNHOME FOUNDATION LANDSCAPE PLAN
SCALE: 1"=20'



TYPICAL BUCKINGHAM TOWNHOME FOUNDATION LANDSCAPE PLAN
SCALE: 1"=20'



TYPICAL APARTMENT FOUNDATION LANDSCAPE PLAN
SCALE: 1"=20'

FOUNDATION PLAN REPRESENTATIVE PLANT LIST

Key	Botanical/Common Name	Size	Remarks
	ORNAMENTAL TREES		
	Amelanchier grandiflora 'Apple Serviceberry'	8' Tall	Multi-Stem
	Cornus mas CORNELIANCHERRY DOGWOOD	8' Tall	Multi-Stem
	Magnolia stellata 'Royal Star' ROYAL STAR MAGNOLIA	8' Tall	Multi-Stem
	Syringa pectinensis 'Morton' CHINA SNOW PEKING LILAC	8' Tall	Multi-Stem
	DECIDUOUS SHRUBS		
	Hydrangea macrophylla 'Bailmer' ENDLESS SUMMER HYDRANGEA	24" Wide	3' O.C.
	Rhus aromatica 'Gro-low' GRO-LOW FRAGRANT SUMAC	24" Wide	3' O.C.
	Spiraea betulifolia 'Tor' BIRCHLEAF SPIREA	24" Tall	3' O.C.
	Spiraea nipponica 'Snowmound' SNOWMOUND SPIREA	30" Wide	4' O.C.
	Syringa patula 'Miss Kim' MISS KIM LILAC	30" Tall	4' O.C.
	Viburnum x juddii JUDD VIBURNUM	36" Tall	4' O.C.
	Viburnum trilobum 'Redwing' Highbush Cranberry VIBURNUM	36" Tall	4' O.C.
	Weigela florida 'Verweil-4' SONIC BOOM RED WEIGELA	24" Tall	4' O.C.
	EVERGREEN SHRUBS		
	Juniperus chinensis var. sargentii 'Glauc' BLUE SARGENT JUNIPER	24" Wide 6" Tall	4' O.C.
	Taxus x media 'Densiflora' DENSE YEW	24" Wide	3' O.C.
	Thuja occidentalis 'Smaragd' EMERALD GREEN ARBORVITAE	4' Tall	3' O.C.
	ORNAMENTAL GRASSES & PERENNIALS		
	Calamagrostis x acutiflora 'Overdam' WHITE FEATHER REED GRASS	#1	30" O.C.
	Coreopsis 'Jethro Tull' JETHRO TULL COREOPSIS	#1	18" O.C.
	Echinacea purpurea PURPLE CONEFLOWER	#1	18" O.C.
	Hemerocallis 'Pardon Me' PARDON ME DAYLILY	#1	18" O.C.
	Hosta 'Patriot' PATRIOT HOSTA	#1	24" O.C.
	Pennisetum alopecuroides 'Hamel' DWARF FOUNTAIN GRASS	#1	24" O.C.
	GROUNDCOVERS		
	Geranium sanguineum var. striatum STRIATUM BLOODY CRANESBILL	#SP4	12" O.C.
	Vinca minor 'Dart's Blue' DART'S BLUE PERIWINKLE	#SP4	12" O.C.

REVISIONS	DATE
2	6.4.2018
1	5.15.18

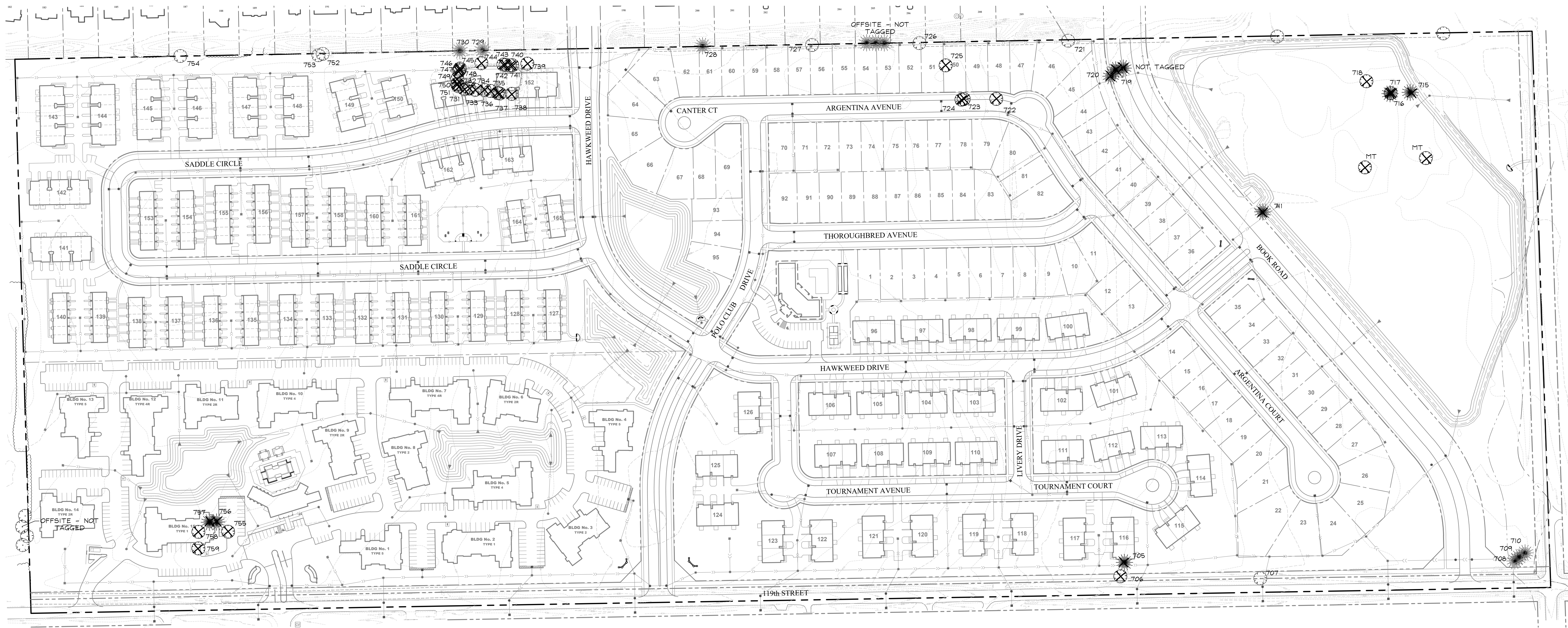
DATE	03.26.18
PROJECT NO.	DR1705
DRAWN	MGM
CHECKED	JCT
SHEET NO.	



GARY R. WEBER
ASSOCIATES, INC.
LAND PLANNING
ECOLOGICAL CONSULTING
LANDSCAPE ARCHITECTURE
212 SOUTH MAIN STREET
WHEATON, ILLINOIS 60187
PHONE: 630-668-7197

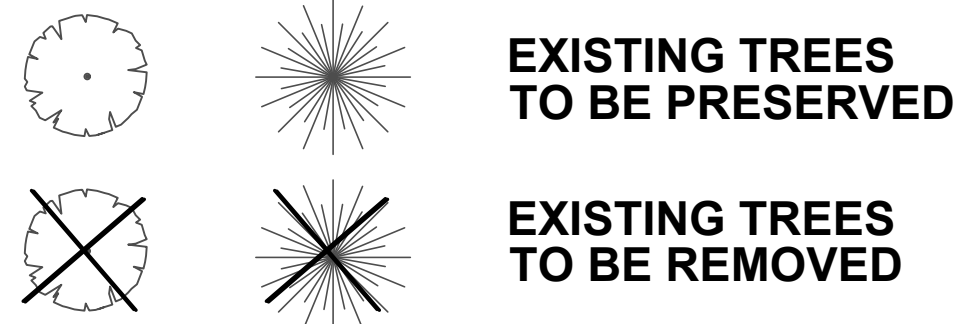
CLIENTS
D-R-HORTON
America's Builder
750 E. BUNKER COURT, SUITE 500
VERNON HILLS, IL 60061
OCULUS DEVELOPMENT
1202 W. MONROE STREET
CHICAGO, IL 60607
ENGINEER: **CEMCON, LTD.**
2280 WHITE OAK CIR, SUITE 100
AURORA, ILLINOIS 60502

POLO CLUB
NAPERVILLE, ILLINOIS
TREE PRESERVATION PLAN



LEGEND

DECIDUOUS EVERGREEN



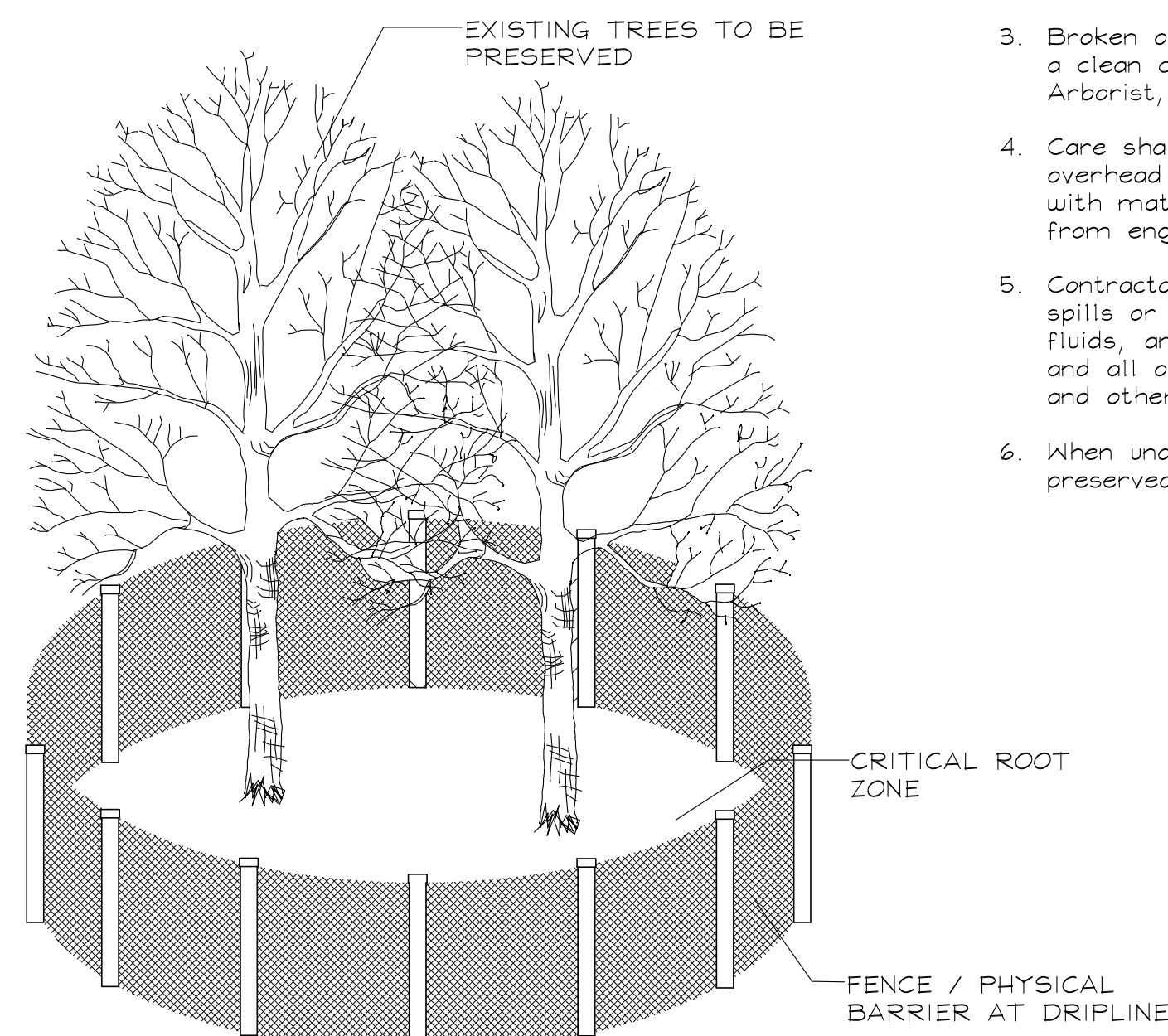
TREE PRESERVATION NOTES

- 48" high snow fence or wood barriers shall extend to the dripline of the tree or tree mass whenever possible, shall be installed before construction begins, and should not be removed until the completion of construction.
- All accidental damage to existing trees that are to be preserved shall be promptly treated as required in accordance with recognized horticultural practices and the instructions of the professional Arborist, Landscape Architect or Horticulturist.
- Broken or badly bruised branches shall be removed with a clean cut, if recommended by the professional Arborist, Landscape Architect or Horticulturist.
- Care shall be exercised by the contractors to protect all overhead limbs and branches from damage by contact with material, machinery or equipment and by damage from engine exhaust.
- Contractors shall protect trees and vegetation against spills or discharge of fuels, lubricating oils, hydraulic fluids, anti-freeze and coolants, calcium chloride, lime and all other similar hydrocarbons, organic chemicals, and other materials which can be harmful.
- When underground utilities are proposed within 5' of a preserved tree trunk, they must be augered if possible.

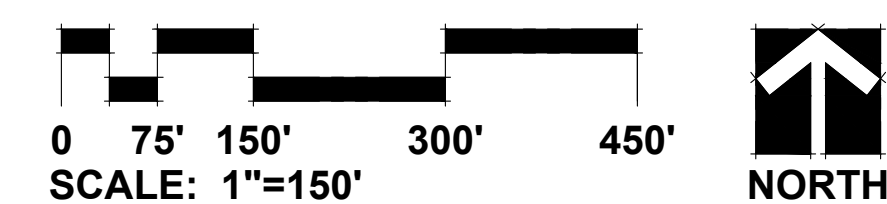
TREE INVENTORY

TAG NO.	BOTANICAL NAME	COMMON NAME	SIZE	HEALTH/STRUCTURE	PROPOSED ACTION
705	<i>Picea abies</i>	Norway Spruce	8"	Good	Remove
706	<i>Acer rubra</i>	Red Maple	10"	Good	Remove
707	<i>Morus rubra</i>	Mulberry	14"	Poor; Missing/Dead Limbs	Preserve
708	<i>Picea abies</i>	Norway Spruce	10"	Fair; Crowded	Preserve
709	<i>Picea abies</i>	Norway Spruce	7"	Fair; Crowded	Preserve
710	<i>Picea abies</i>	Norway Spruce	14"	Fair; Crowded	Preserve
711	<i>Pinus nigra</i>	Austrian Pine	10"	Poor; Leaning	Remove
712	<i>Malus</i>	Apple/Crab	12"	Poor; Missing/Dead Limbs	Remove
713	<i>Pinus nigra</i>	Austrian Pine	6"	Poor; Crowded	Remove
714	<i>Salix nigra</i>	Black Willow	14", 10", 12"	Poor; Missing/Dead Limbs	Remove
715	<i>Pinus nigra</i>	Austrian Pine	10"	Poor; Missing/Dead Limbs	Remove
716	<i>Morus rubra</i>	Mulberry	14"	Poor; Missing/Dead Limbs	Remove
717	<i>Pinus nigra</i>	Austrian Pine	10"	Poor; Missing/Dead Limbs	Remove
718	<i>Salix nigra</i>	Black Willow	20"	Poor; Missing/Dead Limbs	Remove
719	<i>Picea abies</i>	Norway Spruce	10"	Fair	Remove
720	<i>Picea abies</i>	Norway Spruce	14"	Fair	Remove
721	<i>Malus</i>	Apple/Crab	14"	Poor; Missing/Dead Limbs	Preserve
722	<i>Morus rubra</i>	Mulberry	10"	Poor; Missing/Dead Limbs	Remove
723	<i>Salix nigra</i>	Black Willow	10", 6"	Poor; Leaning	Remove
724	<i>Salix nigra</i>	Black Willow	10"	Poor; Crowded	Remove
725	<i>Acer rubra</i>	Red Maple	10", 14"	Poor; Split Risk	Remove
726	<i>Acer rubra</i>	Red Maple	50", 34"	Fair; Split Risk	Preserve
727	<i>Acer rubra</i>	Red Maple	24", 20", 27"	Good	Preserve
728	<i>Pinus nigra</i>	Austrian Pine	9"	Fair; Missing/Dead Limbs	Preserve
729	<i>Pinus strobus</i>	White Pine	7"	Good	Preserve
730	<i>Pinus strobus</i>	White Pine	9"	Good	Preserve
731	<i>Populus deltoides</i>	Eastern Cottonwood	16"	Poor; Leaning	Remove
732	<i>Populus deltoides</i>	Eastern Cottonwood	16"	Poor; Leaning	Remove
733	<i>Populus deltoides</i>	Eastern Cottonwood	14", 10"	Poor; Split Risk	Remove
734	<i>Populus deltoides</i>	Eastern Cottonwood	10", 12", 6"	Poor; Split Risk	Remove
735	<i>Populus deltoides</i>	Eastern Cottonwood	12"	Poor; Leaning	Remove
736	<i>Populus deltoides</i>	Eastern Cottonwood	16"	Fair	Remove
737	<i>Populus deltoides</i>	Eastern Cottonwood	18"	Poor; Leaning	Remove
738	<i>Salix nigra</i>	Black Willow	6", 8", 12"	Poor; Split Risk	Remove

TAG NO.	BOTANICAL NAME	COMMON NAME	SIZE	HEALTH/STRUCTURE	PROPOSED ACTION
739	<i>Populus deltoides</i>	Eastern Cottonwood	6", 8"	Poor; Split Risk	Remove
740	<i>Populus deltoides</i>	Eastern Cottonwood	6", 12", 10"	Poor; Split Risk	Remove
741	<i>Populus deltoides</i>	Eastern Cottonwood	32"	Poor; Leaning	Remove
742	<i>Populus deltoides</i>	Eastern Cottonwood	12", 12"	Poor; Split Risk	Remove
743	<i>Morus rubra</i>	Mulberry	4", 4", 4"	Poor; Missing/Dead Limbs	Remove
744	<i>Malus</i>	Apple/Crab	5"	Good	Remove
745	<i>Populus deltoides</i>	Eastern Cottonwood	16"	Poor; Leaning	Remove
746	<i>Populus deltoides</i>	Eastern Cottonwood	18"	Poor; Leaning	Remove
747	<i>Populus deltoides</i>	Eastern Cottonwood	6"	Poor; Leaning	Remove
748	<i>Populus deltoides</i>	Eastern Cottonwood	14"	Poor; Leaning	Remove
749	<i>Populus deltoides</i>	Eastern Cottonwood	12"	Poor; Leaning	Remove
750	<i>Populus deltoides</i>	Eastern Cottonwood	16"	Poor; Leaning	Remove
751	<i>Populus deltoides</i>	Eastern Cottonwood	30"	Poor; Leaning	Remove
752	<i>Acer negundo</i>	Box Elder	6", 7", 6"	Poor; Crowded	Preserve
753	<i>Acer negundo</i>	Box Elder	9", 4", 6"	Poor; Crowded	Preserve
754	<i>Celtis occidentalis</i>	Common Hackberry	16", 14", 12"	Good	Preserve
755	<i>Gleditsia triacanthos</i>	Honey Locust	32"	Fair; Missing/Dead Limbs	Remove
756	<i>Pinus nigra</i>	Austrian Pine	26"	Poor; Missing/Dead Limbs	Remove
757	<i>Pinus nigra</i>	Austrian Pine	24"	Poor; Leaning	Remove
758	<i>Gleditsia triacanthos</i>	Honey Locust	28"	Fair; Missing/Dead Limbs	Remove
759	<i>Gleditsia triacanthos</i>	Honey Locust	44"	Fair; Missing/Dead Limbs	Remove



TREE PRESERVATION DETAIL



REVISIONS	DATE
2	6.4.2018
1	5.15.18

DATE 03.26.18
PROJECT NO. DR1705
DRAWN MGM
CHECKED JCT
SHEET NO.