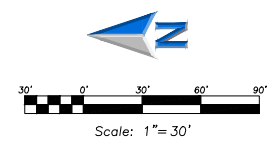
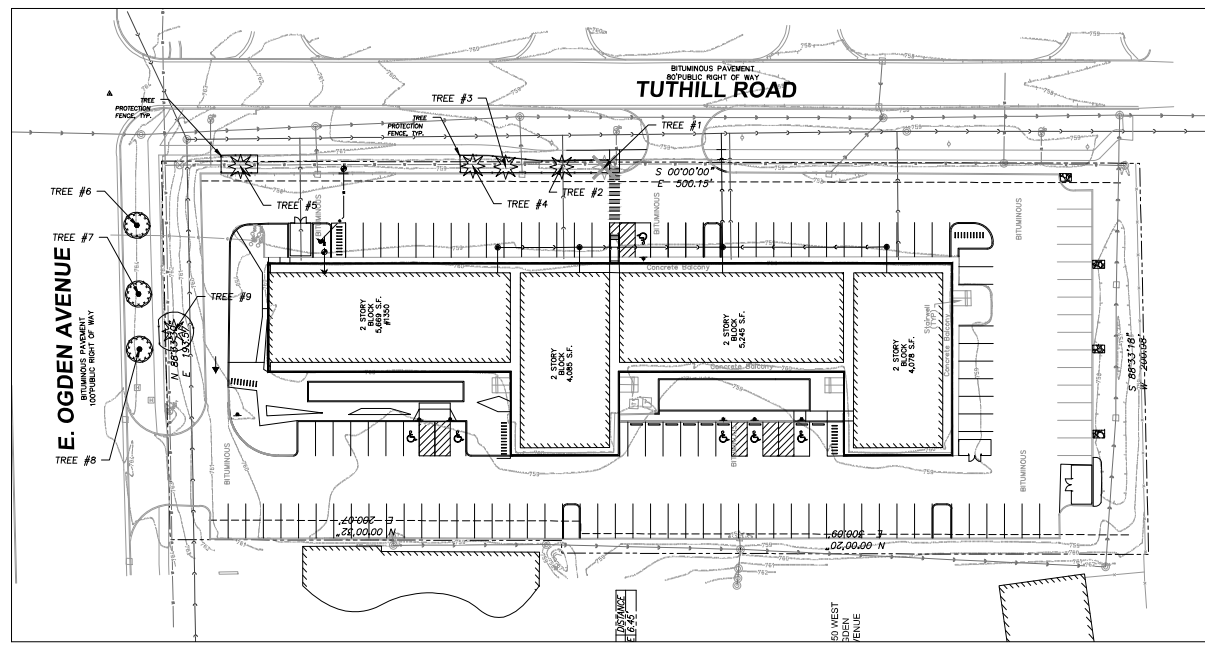


EA - X:\M\LB - 1350 E. Ogden Ave - Naperville Drawings Landscape_Plan.dwg
 Plotted: 11/14/19 @ 12:11pm By: asprey

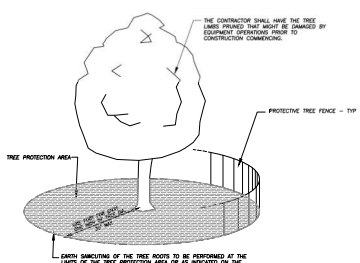


TREE PRESERVATION NOTES

1. ANY EXISTING TREES TO BE RETAINED SHALL BE PROTECTED FROM SOIL COMPACTION AND OTHER DAMAGES THAT MAY OCCUR DURING CONSTRUCTION ACTIVITIES BY ERECTING FENCING AROUND SUCH MATERIALS AT A DISTANCE OF 8.5' FROM THE TRUNK.
2. THE CONTRACTOR SHALL VERIFY THE LOCATIONS OF ALL UNDERGROUND UTILITIES PRIOR TO INITIATING PLANTING OPERATIONS. THE CONTRACTOR SHALL REPAIR, REPLACE AND UTILITY, PAVING, CURBING, ETC., WHICH IS DAMAGED DURING PLANTING AND TREE REMOVAL OPERATIONS.
3. REFER TO PLAN OF SURVEY FOR LEGAL DESCRIPTION, BOUNDARY DIMENSIONS AND EXISTING CONDITIONS.
4. CONTRACTORS MUST VERIFY ALL QUANTITIES AND OBTAIN ALL PROPER PERMITS AND LICENSES FROM THE PROPER AUTHORITIES.
5. LANDSCAPE ARCHITECT IS NOT RESPONSIBLE FOR UNSEEN SITE CONDITIONS.
6. REMOVE ALL DEAD AND DISEASED PLANT MATERIAL FROM SITE AND DISPOSE OF PROPERLY.
7. PRUNE AND FERTILIZE ALL EXISTING VEGETATION TO REMAIN ON SITE.
8. TREE SYMBOL WITH NUMBER INDICATES EXISTING TREE TO REMAIN.
9. TREE SYMBOL WITH NUMBER AND AN "X" INDICATES EXISTING TREE TO BE REMOVED.

EXISTING TREE INVENTORY

TREE #	BOTANICAL NAME	COMMON NAME	TREE SIZE	CONDITION	COMMENTS
1	Thuja occidentalis	Arborvitae	12' H	Good	
2	Picea pungens glauca	Blue Spruce	12' Cal	Fair	Curved Trunk
3	Picea pungens glauca	Blue Spruce	10' Cal	Good	
4	Thuja occidentalis	Arborvitae	12' H	Good	
5	Picea pungens glauca	Blue Spruce	9' Cal	Good	
6	Gymnocladia dioica (spresso)	Kentucky Coffee Tree	6' Cal	Good	Parkway Tree
7	Gymnocladia dioica (spresso)	Kentucky Coffee Tree	6' Cal	Good	Parkway Tree
8	Gymnocladia dioica (spresso)	Kentucky Coffee Tree	6' Cal	Good	Parkway Tree
9	Picea pungens glauca	Blue Spruce	10' Cal	Good	



- NOTES:**
1. A TREE PROTECTION AREA SHALL BE ESTABLISHED AROUND A TREE A DISTANCE OF ONE FOOT FOR EACH ONE INCH OF TREE DIAMETER UP TO A MAXIMUM OF 30 FEET.
 2. PROTECTIVE TREE FENCE SHALL BE INSTALLED AT THE LIMITS OF THE TREE PROTECTION AREA. THE FENCE SHALL BE HIGH ENOUGH SO AS TO BE VISIBLE TO ALL CONSTRUCTION PERSONNEL.
 3. EXISTING UNDERGROUND UTILITIES, STORAGE OF CONSTRUCTION MATERIAL, DUMPING OF WASTE, OR OPERATION OR STORAGE OF ANY EQUIPMENT SHALL NOT BE ALLOWED WITHIN THE TREE PROTECTION AREA.
 4. AUGURING OR REQUIRED BY A LICENSE MUST BE PERFORMED WITHIN THE TREE PROTECTION AREA. AUGURED UTILITIES MUST BE A MINIMUM OF 24 INCHES FROM TREE TRUNK.
 5. ALL TREES TO BE SAVED SHOULD HAVE BEEN SUBMITTED TO CONSTRUCTION ACTIVITY WITHIN THE TREE PROTECTION AREA SHOULD BE SELECTIVELY PRUNED BY AN ARBORIST QUALIFIED AT THE SELECTIVE TRAINING PROGRAM. NONE OF THE TREES SHALL BE TOPPED, HEADED BACK, BRANCHED, OR REMOVED OF THE INTERIOR BRANCHES OR CLIMBED WITH SHOVELS. ALL DEAD WOOD SHOULD BE REMOVED TO AVOID INJURY.
 6. IT IS RECOMMENDED THAT FOLLOWING CONSTRUCTION, TREES BE MAINTAINED BY THEIR OWNERS. NO LAWN SHOULD BE PLACED OR SOIL SHOULD BE LAYED. RECOMMENDING THAT THE AREA BE REGRADED TO AROUND OF DISMOUNTED LINES AND 3'.

City of Naperville LANDSCAPE 10
STANDARD TREE PROTECTION
 DETAIL REVISED: 06/01/2016 SHEET 1 OF 1 **790.10**

1 CITY OF NAPERVILLE TREE PROTECTION DETAIL
 Not To Scale 329383-03

DATE: 07/12/19
 DESIGNER: SSG
 APPROVED BY: SSG PROJECT NO.: 0000.00

J.U.L.I.E.
 Note: The exact location of all utilities shall be verified by the contractor prior to construction activities. For utility locations call: J.U.L.I.E. 1 (800) 892-0123

ERIKSSON ENGINEERING ASSOCIATES, LTD.
 135 S. JEFFERSON ST., SUITE 135
 CHICAGO, ILLINOIS 60601
 PHONE: (312) 453-0551
 FAX: (847) 522-4854
 EMAIL: INFO@EEA-LTD.COM
 PROFESSIONAL DESIGN FIRM
 LICENSE NO. 18-000352-D
 EXPIRES: 04/30/2021

NAPERVILLE MICRO-UNIT APARTMENT
 1350 E. Ogden Ave.
 Naperville, Illinois

Reserved for Seal:

 Expiration Date: 08/31/2021

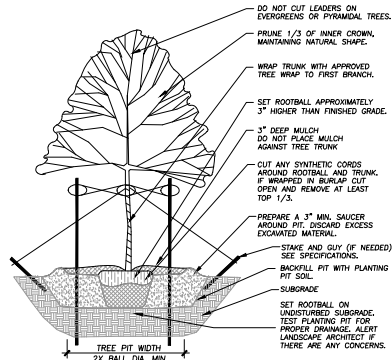
No.	Date	Description
1	07/16/19	Issued For Zoning
2	09/20/19	Issued For Zoning Revisions
	10/11/19	Issued For Zoning Revisions #2
	10/21/19	Issued For Zoning Revisions #3
	11/14/19	Issued For Zoning Revisions #4

DESIGNER: SSG DATE: 07/12/19
 APPROVED BY: SSG PROJECT NO.: 0000.00

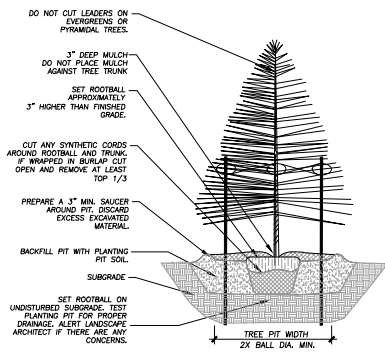
Sheet Title:
TREE PRESERVATION PLAN

Sheet No.:
TP100

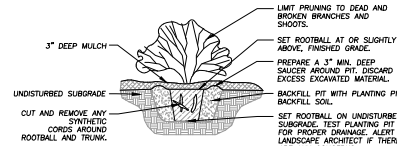
E:\A - \JULIE\LBK - 1350 E. Ogden Ave - Naperville \Drawings \Landscape_Plan.dwg
 Plotted: 11/14/19 @ 12:12pm By: agregory



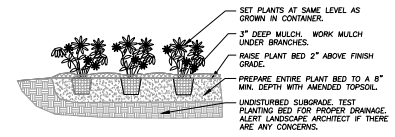
1 TREE PLANTING DETAIL
 Not To Scale 329343-01



2 EVERGREEN TREE PLANTING DETAIL
 NOT TO SCALE 329343-02



3 SHRUB PLANTING DETAIL
 Not To Scale 329333-01



4 ANNUAL, PERENNIAL, & GROUNDCOVER DETAIL
 Not To Scale 329301-03



135 S. JEFFERSON ST. SUITE 135
 CHICAGO, ILLINOIS 60601
 PHONE (312) 453-0551
 FAX (847) 522-4854
 EMAIL INFO@EEA-LTD.COM
 PROFESSIONAL DESIGN FIRM
 LICENSE NO. 18-H005520
 EXPIRES: 04/30/2021

**NAPERVILLE
 MICRO-UNIT APARTMENT**
 1350 E. Ogden Ave.
 Naperville, Illinois

Reserved for Seal:

Expiration Date: 08/31/2021

No.	Date	Description
1	07/16/19	Issued For Zoning
2	09/20/19	Issued For Zoning Revisions
	10/11/19	Issued For Zoning Revisions #2
	10/21/19	Issued For Zoning Revisions #3
	11/14/19	Issued For Zoning Revisions #4

© Eriksson Engineering Associates, LLC. All rights reserved. No part of this drawing may be reproduced or transmitted in any form or by any means, electronic or mechanical, including photocopying, recording, or by any information storage and retrieval system, without the prior written permission of Eriksson Engineering Associates, LLC.

Design By: SSG Date: 07/12/19
 Approval By: SSG Project No.: 0000.00

Sheet Title:
**LANDSCAPE
 DETAILS**

Sheet No:
L200

J.U.L.I.E.
 Note: The exact location of all utilities shall be verified by the contractor prior to construction activities. For utility locations call: J.U.L.I.E. 1 (800) 892-0123