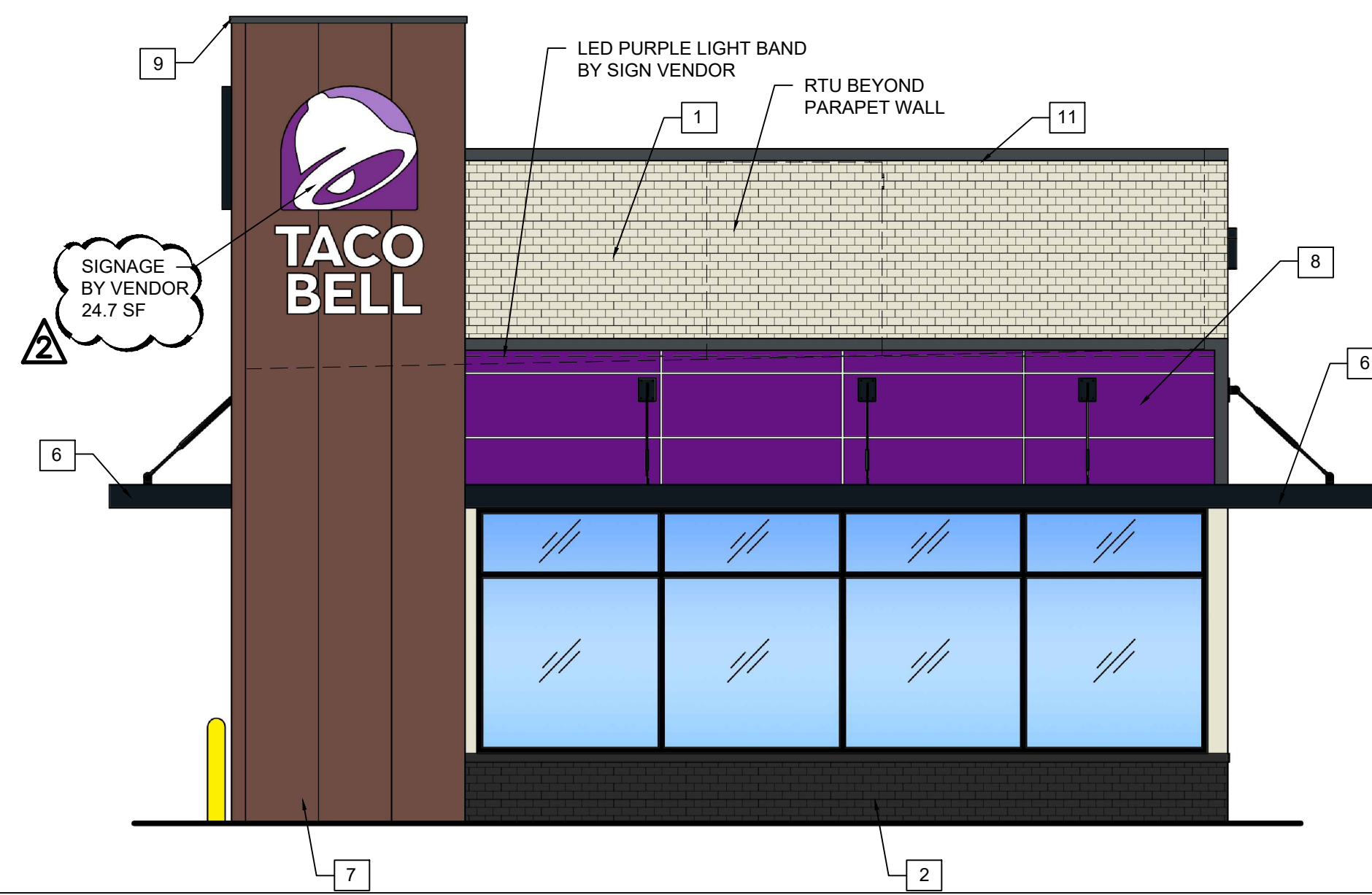


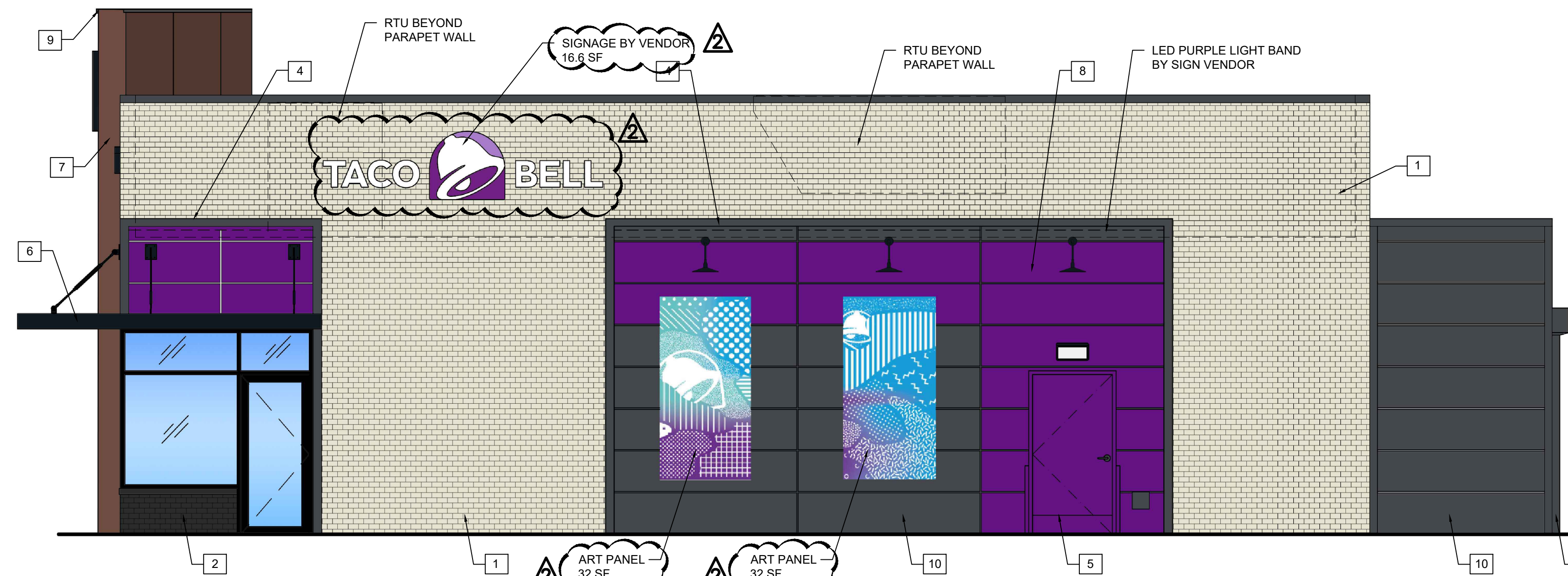
NORTH ELEVATION 1/4" = 1'-0" **1**



SOUTH ELEVATION 1/4" = 1'-0" **2**

KEY NOTES

A



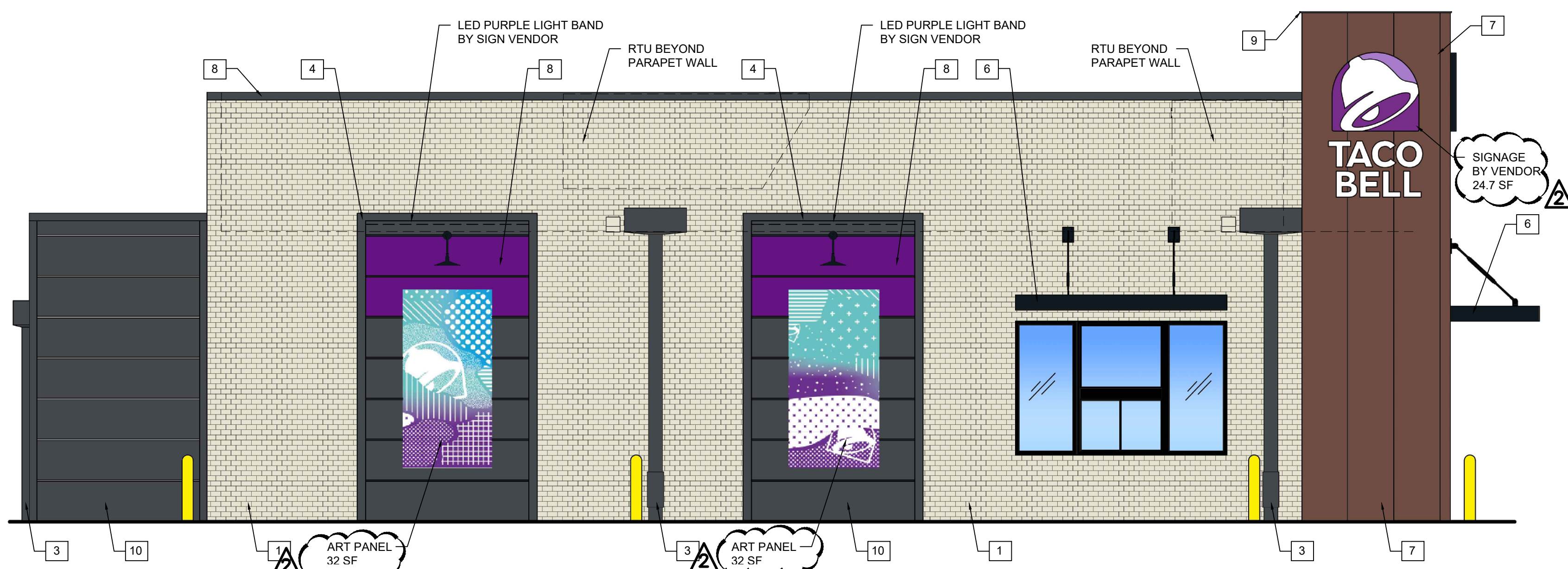
EAST ELEVATION 1/4" = 1'-0" **3**

SYMBOL	ITEM/MATERIAL	MANUFACTURER	MATERIAL SPEC	COLOR
1	MAIN BUILDING	INTERSTATE BRICK	THIN BRICK - MODULAR	ARTIC WHITE
2	UNDER WINDOWS	INTERSTATE BRICK	THIN BRICK - MODULAR	MIDNIGHT BLACK
3	DOWN SPOUTS / SCUPPERS	-	-	CYBERSPACE (SW7076), SEMI-GLOSS
4	HARDIE BOARD (FIBER CEMENT TRIM)	-	HARDIE TRIM 5/4 SMOOTH 1'x5.5'	CYBERSPACE (SW7076), SEMI-GLOSS
5	HOLLOW METAL DOOR	-	-	SW PURPLE TB2603C, SEMI-GLOSS
6	AWNINGS	SIGNAGE VENDOR	-	BLACK BY THE SIGNAGE VENDOR
7	CORNER TOWER (METAL PANELS)	WESTERN STATE	T-GROOVE 24GA PAINTED 18" PANEL	WEATHERED RUSTIC
8	HARDIE BOARD (FIBER CEMENT PANELS)	JAMES HARDIE	PANEL SYSTEM	SW PURPLE TB2603C, SEMI-GLOSS
9	METAL PARAPET CAP	-	24GA GALVANIZED	CYBERSPACE (SW7076) KYNAR 500 COATING
10	HARDIE BOARD (FIBER CEMENT PANELS)	JAMES HARDIE	PANEL SYSTEM	CYBERSPACE (SW7076), SEMI GLOSS

- △ 03-05-24 ZONING COMMENTS
- △ 01-29-24 ZONING COMMENTS

EXTERIOR FINISH SCHEDULE

B



WEST ELEVATION 1/4" = 1'-0" **4**

NORTH:	TOTAL	=	537 SQ. FT.
	BRICK	=	234 SQ. FT. (44%)
	HARDIE PANEL	=	299 SQ. FT. (56%)
SOUTH:	TOTAL	=	572 SQ. FT.
	BRICK	=	154 SQ. FT. (40%)
	HARDIE PANEL	=	91 SQ. FT. (22%)
	METAL PANEL	=	152 SQ. FT. (13%)
	ACCENT (PURPLE)	=	82 SQ. FT. (14%)
EAST:	TOTAL	=	1,166 SQ. FT.
	BRICK	=	599 SQ. FT. (51%)
	HARDIE PANEL	=	461 SQ. FT. (40%)
	ACCENT (PURPLE)	=	208 SQ. FT. (18%)
WEST:	TOTAL	=	1,211 SQ. FT.
	BRICK	=	657 SQ. FT. (54%)
	HARDIE PANEL	=	322 SQ. FT. (27%)
	METAL PANEL	=	152 SQ. FT. (13%)
	ACCENT (PURPLE)	=	63 SQ. FT. (5%)

FINISH CALCULATIONS

C

CONTRACT DATE:
BUILDING TYPE: ENDEAVOR
PLAN VERSION:
SITE NUMBER:
STORE NUMBER:

TACO BELL

1019 E. OGDEN AVE.
NAPERVILLE, IL

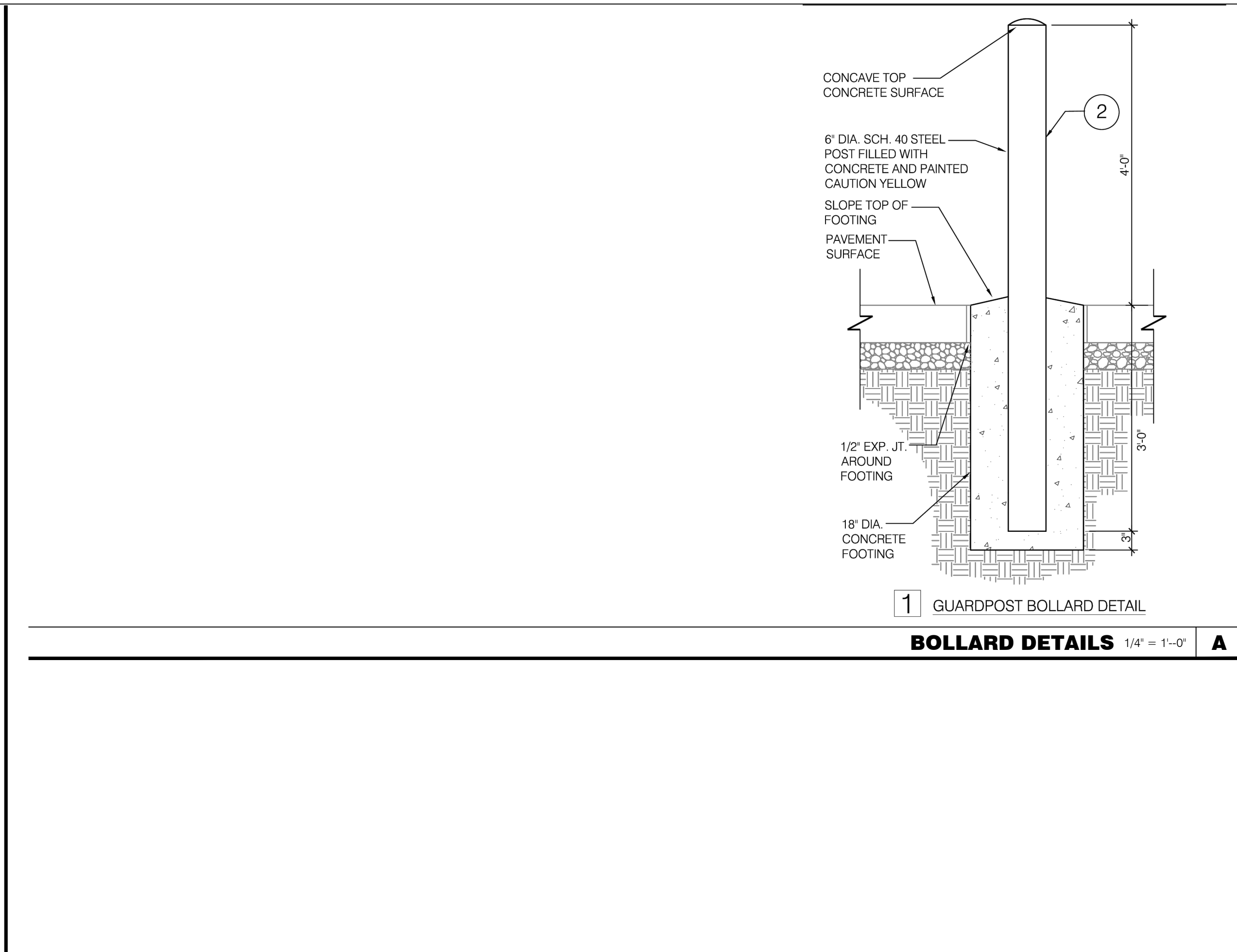
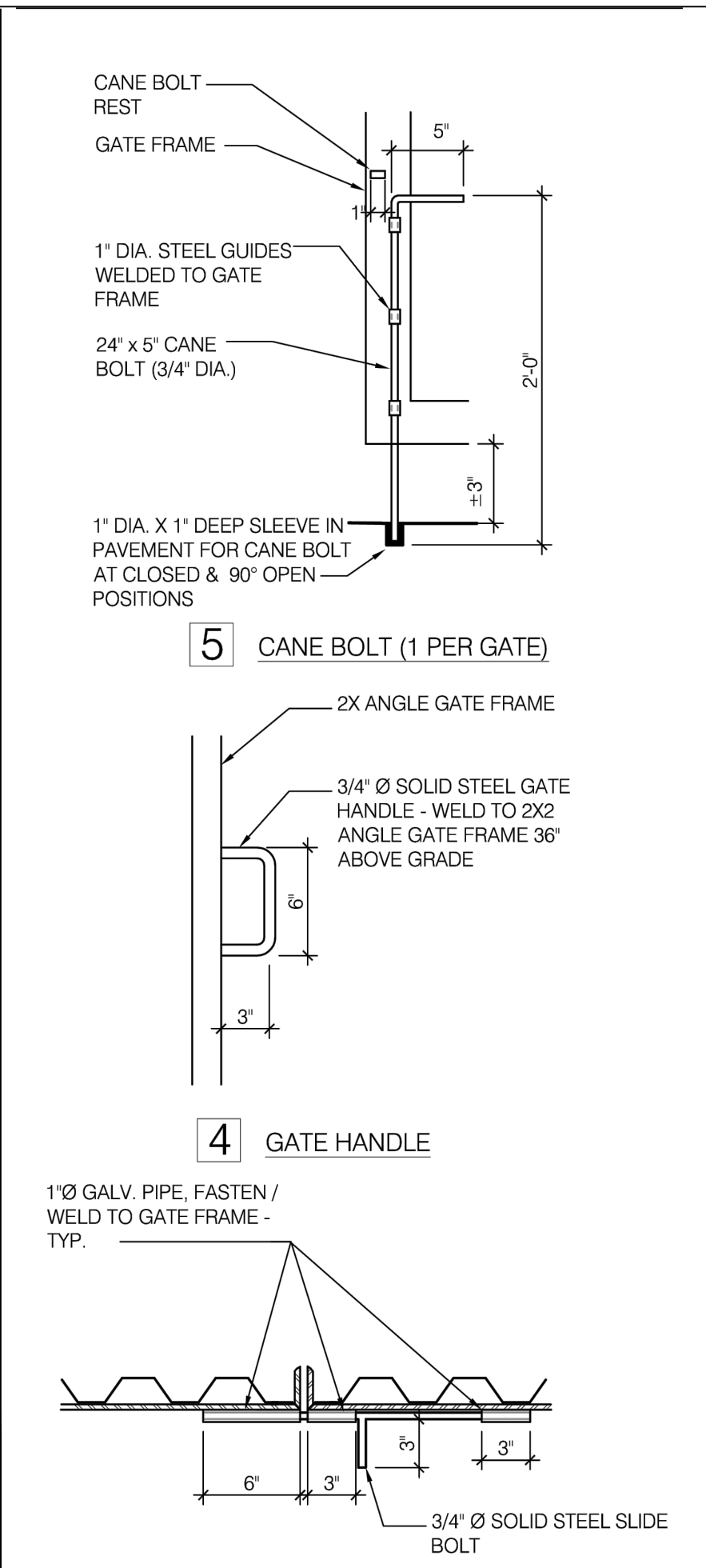
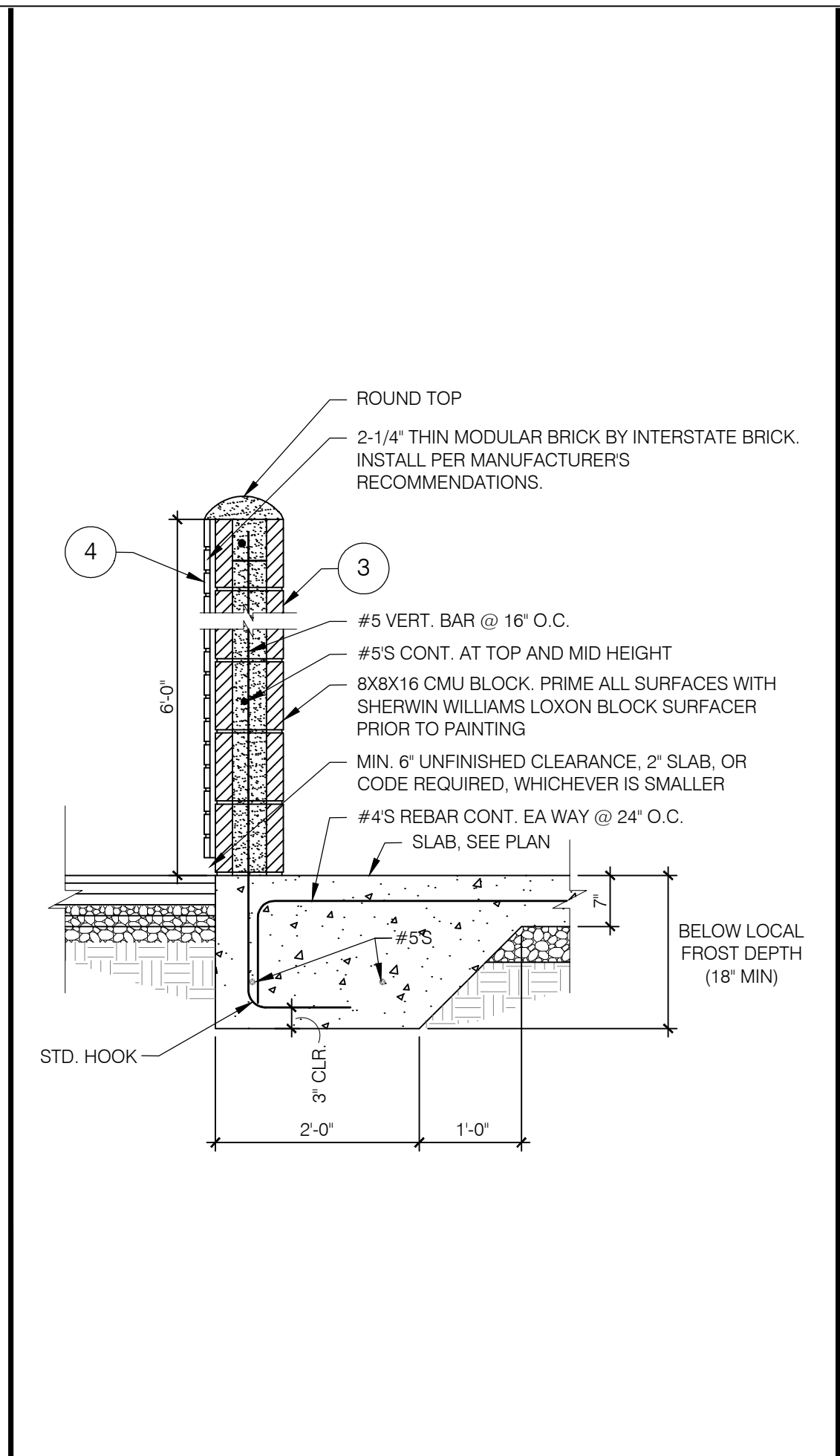
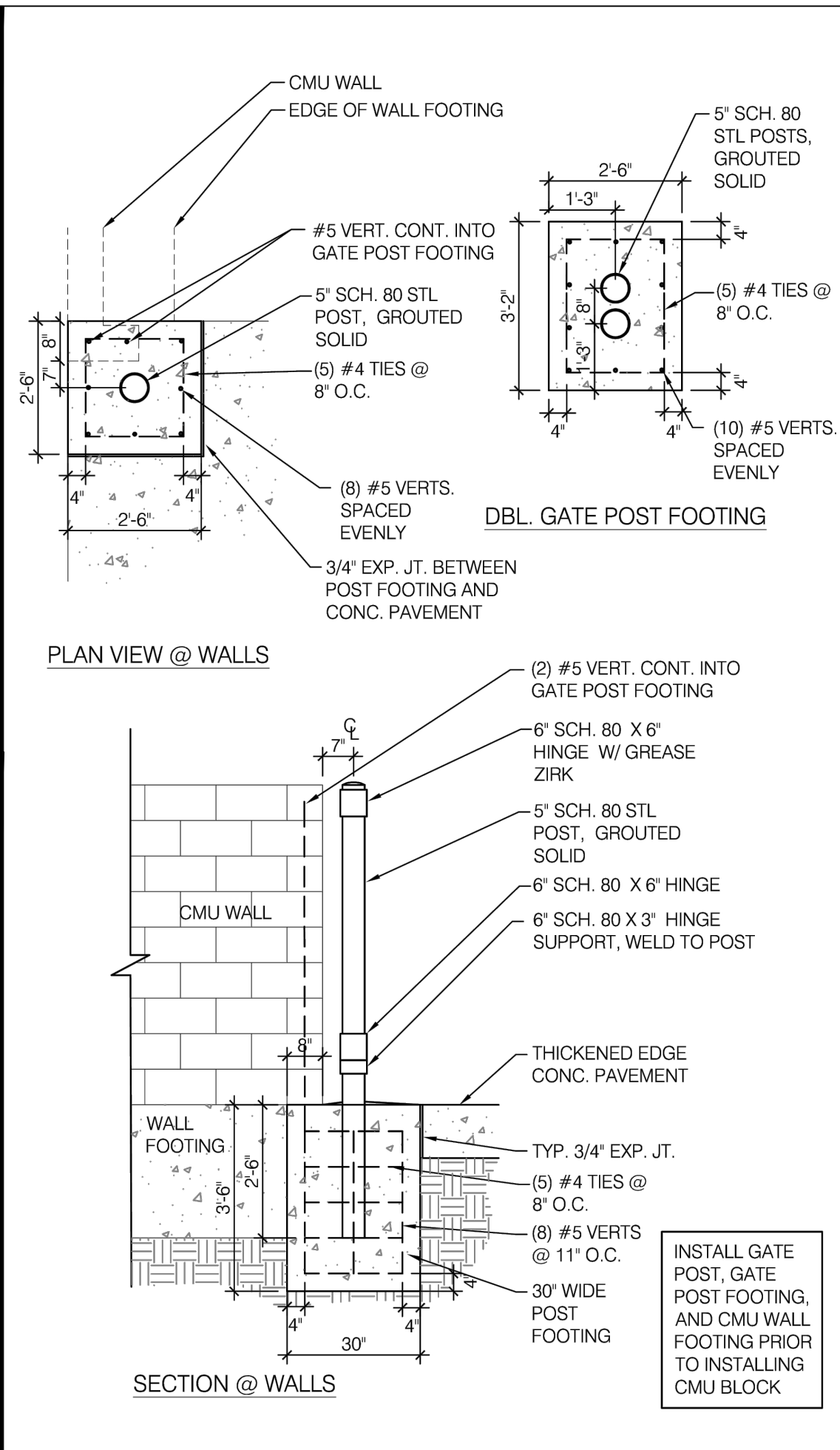


ENDEAVOR

**COLORED
EXTERIOR
ELEVATIONS**

A4.2

PLOT DATE:



ENCLOSURE NOTES N.T.S. **I**

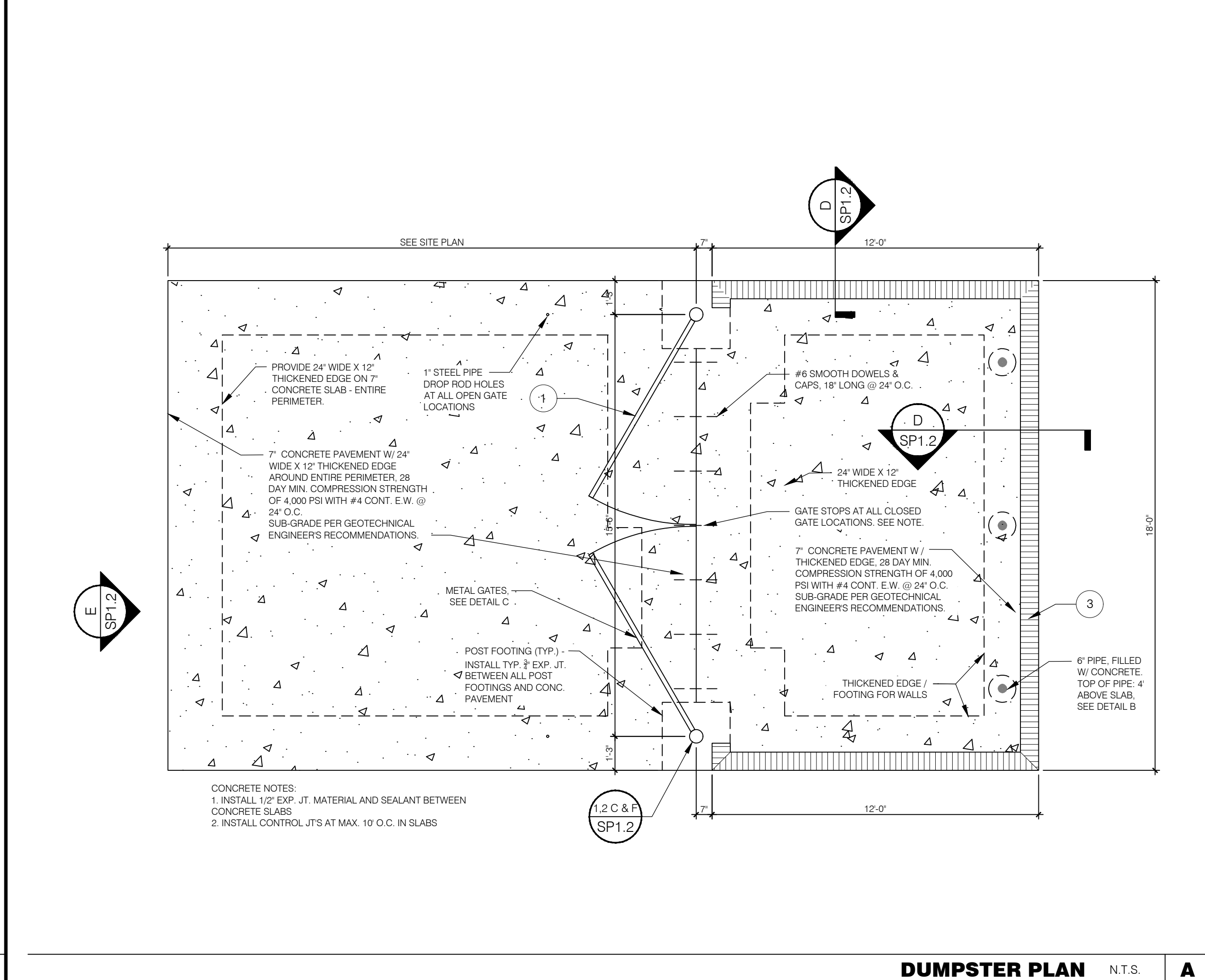
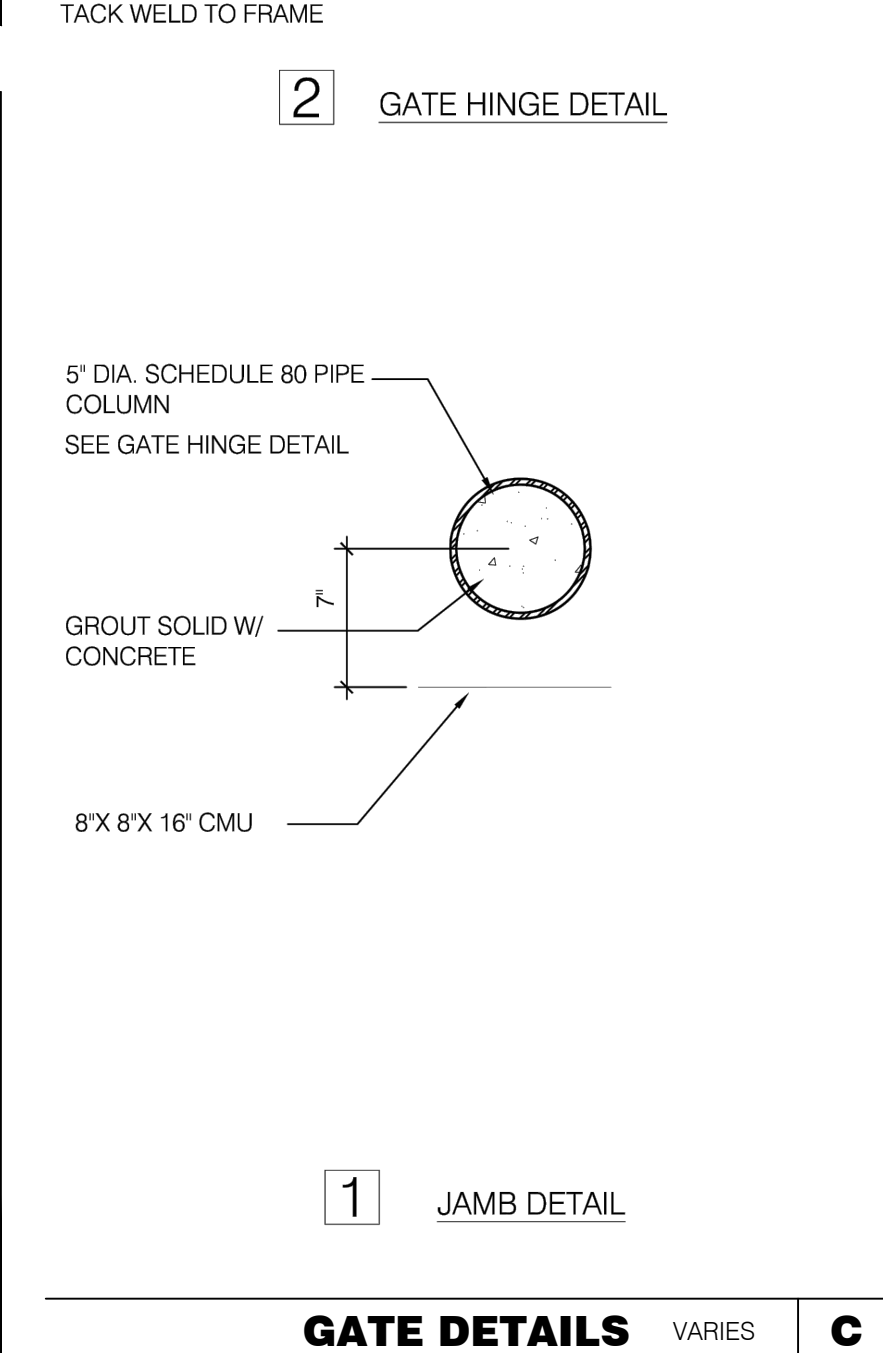
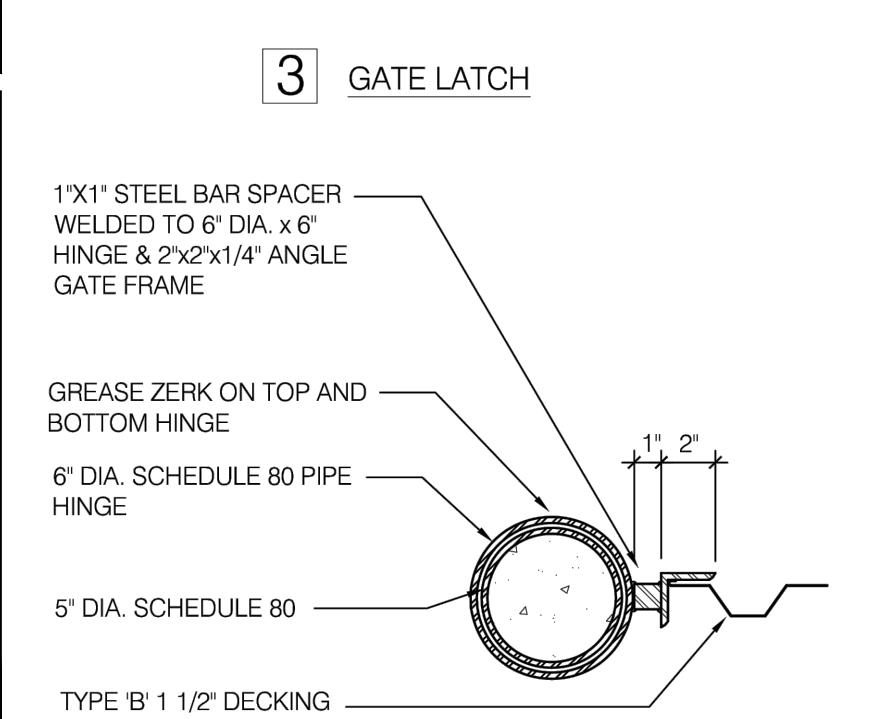
GATE HARDWARE: ALL HARDWARE AND ACCESSORIES SHALL BE HEAVY GALVANIZED.

GATE STOP: MUSHROOM TYPE OR FLUSH PLATE WITH ANCHORS SET IN CONCRETE TO ENGAGE THE CENTER DROP ROD OR PLUNGER BAR.

GATE NOTES: (4) EQUAL WIDE X 6'-0" HIGH MTL. GATES, TYPE 'B' 1 1/2" DECKING, 22GA. W/ T.S. 1 X .1875 BAR CROSS BRACING WELD AND GRIND SMOOTH ALL CONNECTIONS, TYP. PRIME AND PAINT ALL STEEL COMPONENTS.

FRONT ELEVATION N.T.S. **E**

SYMBOL	AREA	MANUFACTURER	COLOR
①	GATE FRAME COLOR	SHERWIN WILLIAMS	SW 7076 CYBER SPACE
②	PIPE BOLLARDS	SHERWIN WILLIAMS	CAUTION YELLOW
③	CMU	TBD	
④	THIN BRICK	INTERSTATE BRICK	ARCTIC WHITE



MRV ARCHITECTS, INC.

5105 TOLLVIEW DR., SUITE 201
ROLLING MEADOWS, IL 60008
TEL: 224-318-2140

MRV ARCHITECTS, INC. 2024

ALL DRAWINGS, SPECIFICATIONS, PLANS AND CONCEPTS ARE INSTRUMENTS OF SERVICE AND THEREFORE ARE PROPERTY OF MRV ARCHITECTS, INC. THEY MAY NOT BE REUSED, COPIED OR REPRODUCED WITHOUT PERMISSION AND EXPRESS WRITTEN CONSENT FROM MRV ARCHITECTS, INC.

△ 03-05-24 ZONING COMMENTS
△ 01-29-24 ZONING COMMENTS

CONTRACT DATE: ENDEAVOR
BUILDING TYPE: ENDEAVOR
PLAN VERSION:
SITE NUMBER:
STORE NUMBER:

TACO BELL

1019 E. OGDEN AVE.
NAPERVILLE, IL

TACO BELL ENDEAVOR

TRASH ENCLOSURE DETAILS

SP1.2

POST DATE