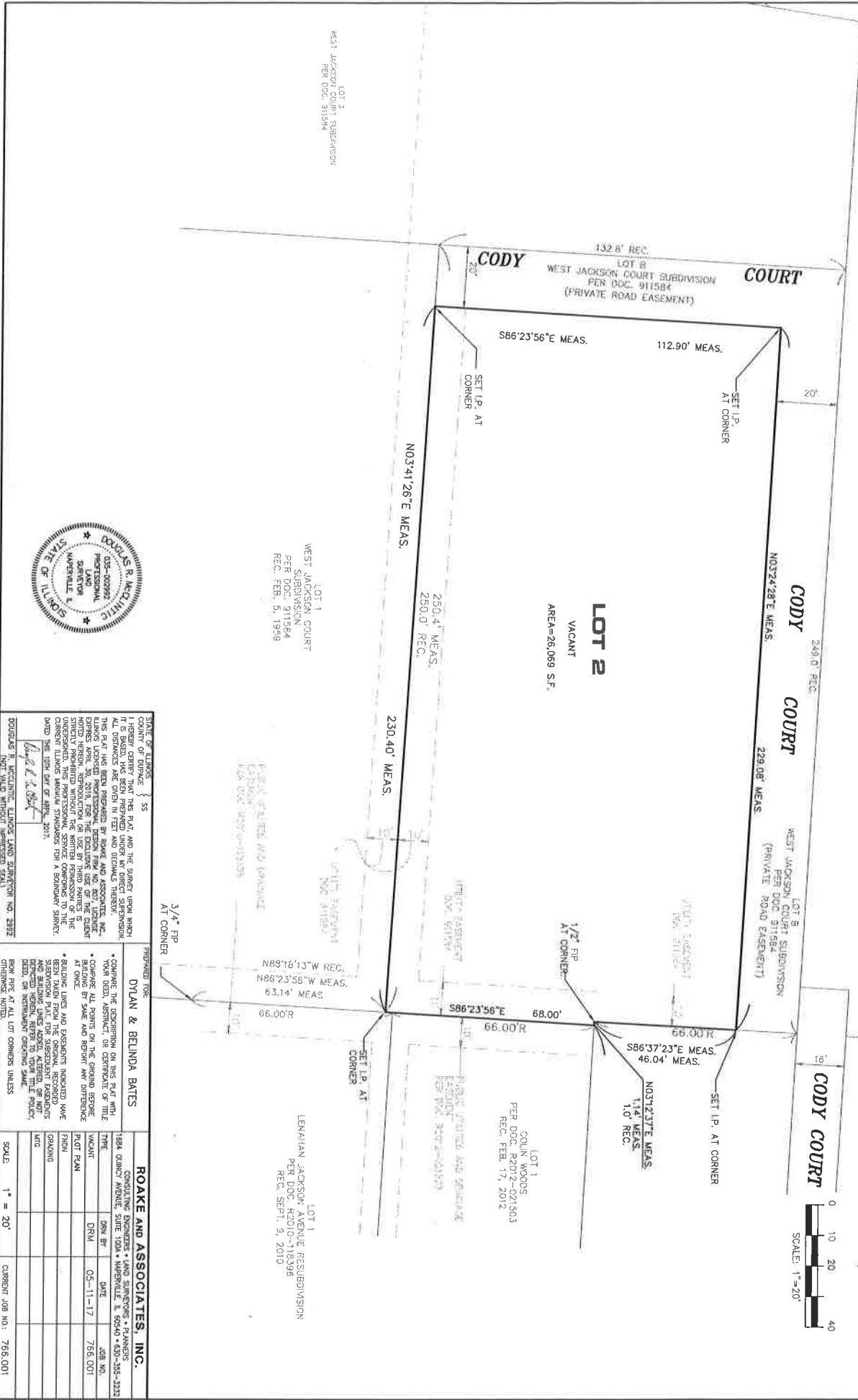
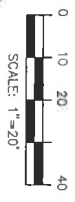


PLAT OF SURVEY

LOT 2 IN WEST JACKSON COURT SUBDIVISION, BEING A SUBDIVISION OF PART OF THE SOUTH-WEST QUARTER OF SECTION 13, TOWNSHIP 38 NORTH, RANGE 9 EAST OF THE THIRD PRINCIPAL MERIDIAN, ACCORDING TO THE PLAT THEREOF RECORDED FEBRUARY 5, 1959 AS DOCUMENT 911584, IN DUPAGE COUNTY, ILLINOIS.

308 CODY COURT



LOT 3
WEST JACKSON COURT SUBDIVISION
PER DOC. 911584

LOT 1
WEST JACKSON COURT
SUBDIVISION
PER DOC. 911584
REC. FEB. 5, 1959

LOT 2
VACANT
AREA=28,069 S.F.

LOT 1
LENAHAN JACOBSON AVENUE RESUBDIVISION
PER DOC. R2010-118396
REC. SEP. 3, 2010

LOT 1
CODY WOODS
PER DOC. R2012-021503
REC. FEB. 17, 2012



STATE OF ILLINOIS } SS
COUNTY OF DUPAGE }

DOUGLAS R. MCCLINTIC, LICENSED LAND SURVEYOR NO. 23932
NORTH WIND, WITHOUT REVISION 2011

3/4" FIP
AT CORNER

1/2" FIP
AT CORNER

SET I.P. AT
CORNER

SET I.P. AT
CORNER

SET I.P. AT
CORNER

SET I.P. AT
CORNER

SET I.P. AT
CORNER

SET I.P. AT
CORNER

SET I.P. AT
CORNER

SET I.P. AT
CORNER

SET I.P. AT
CORNER

SET I.P. AT
CORNER

SET I.P. AT
CORNER

PREPARED FOR:
DYLAN & BELINDA BATES

ROAKE AND ASSOCIATES, INC.

DATE	BY	DATE	JOB NO.
1884 QUANT AVENUE, SUITE 1004 • MERRIVILLE, IL 60440 • 630-358-2228	DRW BY	DATE	JOB NO.
VACANT	DRW	05-11-17	766.001
FROM			
TO			
REVISIONS			
NO.	DESCRIPTION	DATE	BY
1	ISSUED FOR PERMITS		
2	REVISIONS TO PERMITS		
3	REVISIONS TO PERMITS		
4	REVISIONS TO PERMITS		
5	REVISIONS TO PERMITS		
6	REVISIONS TO PERMITS		
7	REVISIONS TO PERMITS		
8	REVISIONS TO PERMITS		
9	REVISIONS TO PERMITS		
10	REVISIONS TO PERMITS		
11	REVISIONS TO PERMITS		
12	REVISIONS TO PERMITS		
13	REVISIONS TO PERMITS		
14	REVISIONS TO PERMITS		
15	REVISIONS TO PERMITS		
16	REVISIONS TO PERMITS		
17	REVISIONS TO PERMITS		
18	REVISIONS TO PERMITS		
19	REVISIONS TO PERMITS		
20	REVISIONS TO PERMITS		
21	REVISIONS TO PERMITS		
22	REVISIONS TO PERMITS		
23	REVISIONS TO PERMITS		
24	REVISIONS TO PERMITS		
25	REVISIONS TO PERMITS		
26	REVISIONS TO PERMITS		
27	REVISIONS TO PERMITS		
28	REVISIONS TO PERMITS		
29	REVISIONS TO PERMITS		
30	REVISIONS TO PERMITS		
31	REVISIONS TO PERMITS		
32	REVISIONS TO PERMITS		
33	REVISIONS TO PERMITS		
34	REVISIONS TO PERMITS		
35	REVISIONS TO PERMITS		
36	REVISIONS TO PERMITS		
37	REVISIONS TO PERMITS		
38	REVISIONS TO PERMITS		
39	REVISIONS TO PERMITS		
40	REVISIONS TO PERMITS		
41	REVISIONS TO PERMITS		
42	REVISIONS TO PERMITS		
43	REVISIONS TO PERMITS		
44	REVISIONS TO PERMITS		
45	REVISIONS TO PERMITS		
46	REVISIONS TO PERMITS		
47	REVISIONS TO PERMITS		
48	REVISIONS TO PERMITS		
49	REVISIONS TO PERMITS		
50	REVISIONS TO PERMITS		
51	REVISIONS TO PERMITS		
52	REVISIONS TO PERMITS		
53	REVISIONS TO PERMITS		
54	REVISIONS TO PERMITS		
55	REVISIONS TO PERMITS		
56	REVISIONS TO PERMITS		
57	REVISIONS TO PERMITS		
58	REVISIONS TO PERMITS		
59	REVISIONS TO PERMITS		
60	REVISIONS TO PERMITS		
61	REVISIONS TO PERMITS		
62	REVISIONS TO PERMITS		
63	REVISIONS TO PERMITS		
64	REVISIONS TO PERMITS		
65	REVISIONS TO PERMITS		
66	REVISIONS TO PERMITS		
67	REVISIONS TO PERMITS		
68	REVISIONS TO PERMITS		
69	REVISIONS TO PERMITS		
70	REVISIONS TO PERMITS		
71	REVISIONS TO PERMITS		
72	REVISIONS TO PERMITS		
73	REVISIONS TO PERMITS		
74	REVISIONS TO PERMITS		
75	REVISIONS TO PERMITS		
76	REVISIONS TO PERMITS		
77	REVISIONS TO PERMITS		
78	REVISIONS TO PERMITS		
79	REVISIONS TO PERMITS		
80	REVISIONS TO PERMITS		
81	REVISIONS TO PERMITS		
82	REVISIONS TO PERMITS		
83	REVISIONS TO PERMITS		
84	REVISIONS TO PERMITS		
85	REVISIONS TO PERMITS		
86	REVISIONS TO PERMITS		
87	REVISIONS TO PERMITS		
88	REVISIONS TO PERMITS		
89	REVISIONS TO PERMITS		
90	REVISIONS TO PERMITS		
91	REVISIONS TO PERMITS		
92	REVISIONS TO PERMITS		
93	REVISIONS TO PERMITS		
94	REVISIONS TO PERMITS		
95	REVISIONS TO PERMITS		
96	REVISIONS TO PERMITS		
97	REVISIONS TO PERMITS		
98	REVISIONS TO PERMITS		
99	REVISIONS TO PERMITS		
100	REVISIONS TO PERMITS		

SCALE: 1" = 20'
CURRENT JOB NO.: 766.001