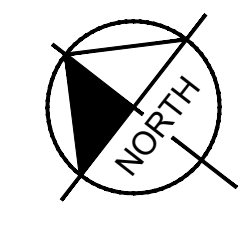
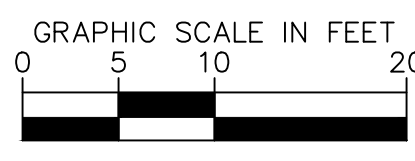
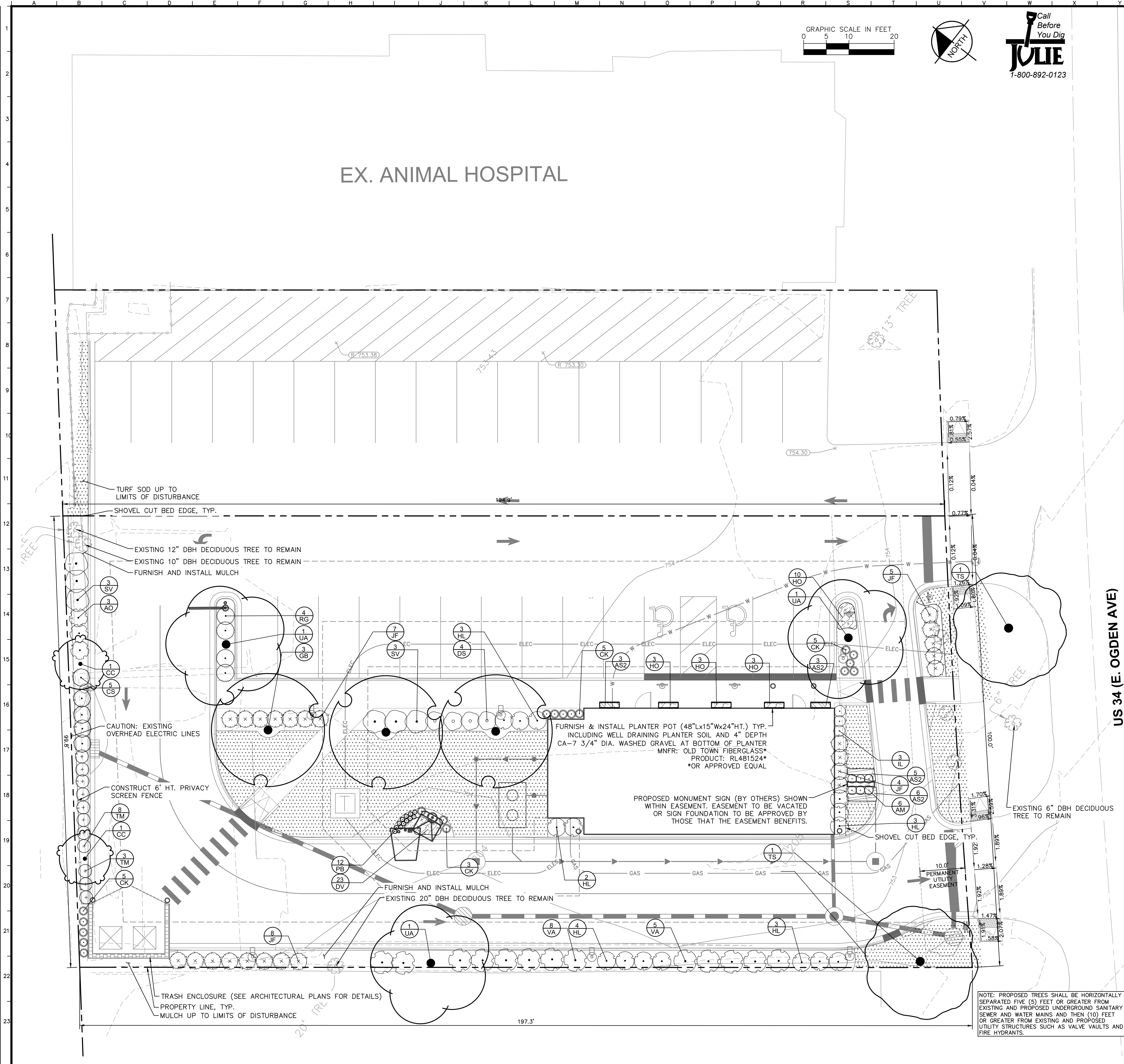


Drawing name: \\kimley-horn\work\01\LEVEY\268581000_MRV\02\Design\CAD\Plan\Sheets\L1.0 Mar 07, 2024 5:02pm by: jascognell
 This document, together with the concepts and designs presented herein, is intended only for the specific purpose and client for which it was prepared. Reuse of and improper reliance on this document without written authorization and adaptation by Kimley-Horn and Associates, Inc. shall be without liability to Kimley-Horn and Associates, Inc.



Call Before You Dig
1-800-892-0123

PLANT SCHEDULE

| SYMBOL | CODE | QTY | BOTANICAL NAME |
|--|------|-----|--|
| TREES | | | |
| | GB | 3 | GINKGO BILOBA |
| | TS | 2 | TILIA TOMENTOSA 'STERLING' |
| | UA | 3 | ULMUS X 'ACCOLADE' |
| ORNAMENTAL TREES | | | |
| | CC | 2 | CERCIS CANADENSIS |
| SHRUBS | | | |
| | AO | 3 | AMELANCHIER ALNIFOLIA 'OBELISK' |
| | AM | 6 | ARONIA MELANOCARPA X 'UCONNAM165' |
| | CS | 5 | CORNUS SERICEA 'CARDINAL' |
| | DS | 4 | DIERVILLA RIVULARIS 'SMDNDRSF' |
| | HL | 15 | HYDRANGEA PANICULATA 'LITTLE LIME' |
| | IL | 3 | ITEA VIRGINICA 'LITTLE HENRY' TM |
| | JF | 24 | JUNIPERUS CHINENSIS 'KALLY'S COMPACT' |
| | RG | 4 | RHUS AROMATICA 'GRO-LOW' |
| | SV | 6 | SYRINGA VULGARIS 'CHARLES JOLY' |
| | TM | 11 | TAXUS X MEDIA 'HICKSII' |
| | VA | 13 | VIBURNUM DENTATUM 'CHRISTOM' |
| GRASSES | | | |
| | CK | 18 | CALAMAGROSTIS X ACUTIFLORA 'KARL FOERSTER' |
| | PB | 12 | PENNISETUM ALOPECUROIDES 'BURGUNDY BUNNY' |
| SYMBOL CODE BOTANICAL NAME PERENNIALS AND GRASSES | | | |
| | AS2 | | ALLIUM X 'SUMMER BEAUTY' |
| | HO | | HEMEROCALLIS X 'STELLA DE ORO' |
| | DV | | THYMUS X 'DOONE VALLEY' |
| GROUND COVERS | | | |
| | SOD | | TURF SOD UP TO LIMITS OF DISTURBANCE |

NOTE: SEE SHEET L2.0 FOR FULL PLANT SCHEDULE, NOTES, & DETAILS.

| Naperville, IL Landscape Ordinances | | |
|---|--|---|
| Required | Provided | |
| Section 5-10-3.3 Parkway Landscaping | | |
| Parkway Landscape | 2.5" Caliper tree requirement, evenly spaced not more than 40 feet apart 2 Trees Required | 1 Tree Proposed & 1 Tree Existing along E. Ogden Ave. |
| Section 5-10-3.4 Perimeter Landscaping | | |
| Perimeter landscape | 2.5" Caliper trees and/or 6 FT HT min evergreen trees shall be spaced not more than 70 feet apart along all property lines North- 2 trees required West- 3 trees required South- 2 trees required East- 3 trees required | North- 2 Canopy trees existing West- 2 Canopy trees proposed & 1 canopy tree existing South- 0 Canopy trees proposed due to permanent utility easement conflict. East- 3 Canopy trees proposed along the sidewalk at the nose of the new parking stalls. |
| Section 5-10-3.4.2.1 Foundation Landscaping | | |
| Foundation Landscape | Foundation planting required to all sides of building which face a public ROW. 1 plant required per 3 linear feet of building length 28' LF of Bldg. along Ogden / 3 LF = 9.4 10 Shrubs required | 10 foundation plants provided |
| Section 5-10-3.4.3 Nonresidential Adjacent to Residential | | |
| Rear Yard | A continuous landscape buffer is required min. 6' Ht. fence along rear yard adjacent to residential. | A new continuous 6' Ht. privacy screen fence is proposed along rear side yard. |
| Section 5-10-3.5.1 Interior Parking Lot Landscape | | |
| Interior parking lot landscape | No more than twenty adjacent parking spaces are to be located in any length of a single parking row without landscape area. 19 spaces in a row = 1 parking island at end of row 1 shade tree 2.5" CAL for each 130 SF of landscape island. 50% of every landscape island shall be planted with live material, remaining can be covered with mulch. 158 SF of Landscape Island/130= 1.2 Tree | 1 island provided at end of row 2 Trees provided |
| Section 5-10-3.5.2.1 Perimeter Parking Lot Landscaping | | |
| Perimeter parking lot landscape | 5 ft wide landscape area shall be provided around that park of the perimeter of all parking lots. | Variance requested |
| Section 5-10-3.5.2.4.1 Perimeter Parking Lot Landscaping Abutting Residential Property | | |
| Perimeter parking lot landscape required abutting Residential Property | Solid wood fence required along 100% of the parking lot. Continuous landscape required across 50% of the parking lot to a min. height of 6'. (1) Shade tree required per every 35 linear feet. | Solid wood fence is provided. Landscape material is provided along > 50% of the parking lot length. (2) Existing Shade Trees are to Remain and (2) Ornamental Trees are proposed < 35' O.C. due to existing overhead electrical line conflicts. |
| Section 5-10-3.5.2.3 Front and Corner Side Yards | | |
| Front yard landscape | Across from nonresidential property landscaping shall be provided across 50% of parking lot 3 FT height. | Landscaping provided across 50% of parking lot. |
| Section 5-10-3.5.2.4 Perimeter Parking Lot Landscaping | | |
| Rear and interior side yards | Abutting nonresidential property landscaping shall be provided across 50% of parking lot 3 FT height. Shade trees 2.5" Caliper shall be spaced not more than 70 feet East- 2 shade trees required West- 2 shade trees required | East- Side yard landscaping not provided due to shared driveway access West- 2 Canopy trees proposed, a combination of the existing 6' ht. board on board fence and new landscaping provided across 50% of parking lot |

| | | | |
|---|------------------|---------------|-----------------|
| SCALE: AS NOTED | DESIGNED BY: BMH | DRAWN BY: CAE | CHECKED BY: JPM |
| <p>Kimley»Horn ARCHITECTS, INC. 111 WEST JACKSON BLVD., SUITE 1300 PHOENIX, AZ 85003 WWW.KIMLEY-HORN.COM</p> | | | |
| <p>MRV ARCHITECTS, INC. 1019 E. OGDEN AVE. NAPERVILLE, IL</p> | | | |
| <p>LANDSCAPE PLAN</p> | | | |
| <p>TACO BELL 1019 E. OGDEN AVE. NAPERVILLE, IL</p> | | | |
| <p>ORIGINAL ISSUE: 12/15/2023 KHA PROJECT NO. 268581000</p> | | | |
| <p>SHEET NUMBER L1.0</p> | | | |

PLANT SCHEDULE

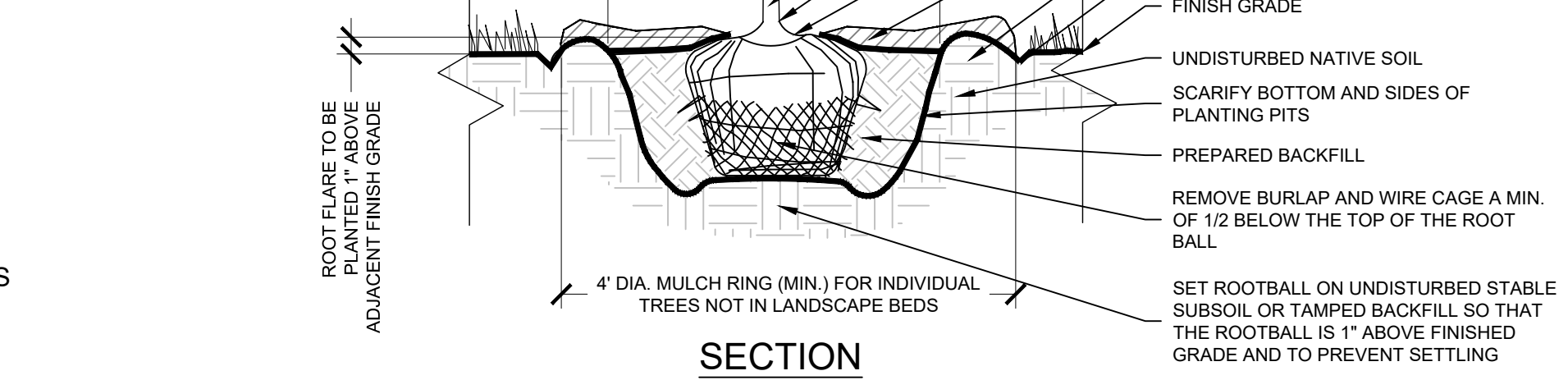
| SYMBOL | CODE | QTY | BOTANICAL / COMMON NAME | CONT | CAL |
|-------------------------------|------|-----|---|--------|--------------|
| TREES | | | | | |
| | GB | 3 | GINKGO BILOBA / MAIDENHAIR TREE | B & B | 2.5" CAL MIN |
| | TS | 2 | TILIA TOMENTOSA 'STERLING' / STERLING SILVER LINDEN | B & B | 2.5" CAL MIN |
| | UA | 3 | ULMUS X 'ACCOLADE' / ACCOLADE ELM | B & B | 2.5" CAL MIN |
| ORNAMENTAL TREES | | | | | |
| | CC | 2 | CERCIS CANADENSIS / EASTERN REDBUD | B & B | 2.5" CAL MIN |
| SHRUBS | | | | | |
| | AO | 3 | AMELANCHIER ALNIFOLIA 'OBELISK' / STANDING OVATION™ SERVICEBERRY | - | SEE PLAN |
| | AM | 6 | ARONIA MELANOCARPA X 'UCONNAM165' / LOW SCAPE MOUND BLACK CHOKEBERRY | - | SEE PLAN |
| | CS | 5 | CORNUS SERICEA 'CARDINAL' / CARDINAL RED TWIG DOGWOOD | - | SEE PLAN |
| | DS | 4 | DIERVILLA RIVULARIS 'SMDNDRSF' / KODIAK BLACK BUSH HONEYSUCKLE | - | SEE PLAN |
| | HL | 15 | HYDRANGEA PANICULATA 'LITTLE LIME' / LITTLE LIME HYDRANGEA | - | SEE PLAN |
| | IL | 3 | ITEA VIRGINICA 'LITTLE HENRY' TM / VIRGINIA SWEETSPICE | - | SEE PLAN |
| | JF | 24 | JUNIPERUS CHINENSIS 'KALLAY'S COMPACT' / KALLAY'S COMPACT PFITZER JUNIPER | - | SEE PLAN |
| | RG | 4 | RHUS AROMATICA 'GRO-LOW' / GRO-LOW FRAGRANT SUMAC | - | SEE PLAN |
| | SV | 6 | SYRINGA VULGARIS 'CHARLES JOLY' / CHARLES JOY LILAC | - | SEE PLAN |
| | TM | 11 | TAXUS X MEDIA 'HICKSI' / HICKS YEW | - | SEE PLAN |
| | VA | 13 | VIBURNUM DENTATUM 'CHRISTOM' / BLUE MUFFIN® ARROWWOOD VIBURNUM | 1 GAL. | SEE PLAN |
| GRASSES | | | | | |
| | CK | 18 | CALAMAGROSTIS X ACUTIFLORA 'KARL FOERSTER' / FEATHER REED GRASS | 1 GAL. | SEE PLAN |
| | PB | 12 | PENNISETUM ALOPECUROIDES 'BURGUNDY BUNNY' / BURGUNDY BUNNY DWARF FOUNTAIN GRASS | 1 GAL. | SEE PLAN |
| PERENNIALS AND GRASSES | | | | | |
| | AS2 | 17 | ALLIUM X 'SUMMER BEAUTY' / SUMMER BEAUTY ALLIUM | 1 GAL. | 18" O.C. |
| | HO | 19 | HEMEROCALLIS X 'STELLA DE ORO' / STELLA DE ORO DAYLILY | 1 GAL. | 18" O.C. |
| | DV | 23 | THYMUS X 'DOONE VALLEY' / DOONE VALLEY THYME | 1 GAL. | 12" O.C. |
| GROUND COVERS | | | | | |
| | SOD | | TURF SOD / TURF SOD UP TO LIMITS OF DISTURBANCE | SOD | |

LANDSCAPE NOTES

- THE LANDSCAPE CONTRACTOR SHALL BE RESPONSIBLE FOR INSTALLING MATERIALS AND PLANTS SHOWN ON THE LANDSCAPE PLAN. THE CONTRACTOR IS RESPONSIBLE FOR THE COST TO REPAIR UTILITIES, ADJACENT LANDSCAPE, PUBLIC AND PRIVATE PROPERTY THAT IS DAMAGED BY THE CONTRACTOR OR THEIR SUBCONTRACTOR'S OPERATIONS DURING INSTALLATION OR DURING THE SPECIFIED MAINTENANCE PERIOD. CALL FOR UTILITY LOCATIONS PRIOR TO ANY EXCAVATION.
- THE CONTRACTOR SHALL REPORT ANY DISCREPANCY IN PLAN VS. FIELD CONDITIONS IMMEDIATELY TO THE LANDSCAPE ARCHITECT, PRIOR TO CONTINUING WITH THAT PORTION OF WORK.
- NO PLANTING WILL BE INSTALLED UNTIL ALL GRADING AND CONSTRUCTION HAS BEEN COMPLETED IN THE IMMEDIATE AREA.
- THE CONTRACTOR SHALL BE RESPONSIBLE FOR THE REPAIR OF ANY OF THEIR TRENCHES OR EXCAVATIONS THAT SETTLE.
- ALL PLANTS TO BE SPECIMEN GRADE, WELL BRANCHED, HEALTHY, FULL, PRE-INOCULATED AND FERTILIZED. PLANTS SHALL BE FREE FROM DISEASE, PESTS, WOUNDS, AND SCARS. PLANTS SHALL BE FREE FROM NOTICEABLE GAPS, HOLES, OR DEFORMITIES. PLANTS SHALL BE FREE FROM BROKEN OR DEAD BRANCHES. TRUNKS WILL BE WRAPPED IF NECESSARY TO PREVENT SUN SCALD AND INSECT DAMAGE. THE LANDSCAPE CONTRACTOR SHALL REMOVE POOR BRANCHING OF EXISTING AND PROPOSED TREES.
- PRUNE PLANTS AS NECESSARY - PER STANDARD NURSERY PRACTICE AND TO CORRECT TOPSOIL SHALL BE PROVIDED AND GRADED BY THE GENERAL CONTRACTOR UP TO 6 INCHES BELOW FINISHED GRADE IN TURF AREAS AND 18 INCHES IN PLANTING AREAS.
- SEED/SOD LIMIT LINES ARE APPROXIMATE. CONTRACTOR SHALL SEED/SOD ALL AREAS WHICH ARE DISTURBED BY GRADING WITH THE SPECIFIED SEED/SOD MIXES.
- EDGING TO BE A SPADED EDGE UNLESS INDICATED OTHERWISE ON THE PLANS. SPADED EDGE TO PROVIDE V-SHAPED DEPTH AND WIDTH TO CREATE SEPARATION BETWEEN MULCH AND GRASS. A SPADED BED EDGE SHALL SEPARATE MULCH BEDS FROM TURF OR SEEDED AREAS. A SPADED EDGE IS NOT REQUIRED ALONG CURBED EDGES.
- CONTRACTOR SHALL INSTALL SHREDDED HARDWOOD MULCH AT A 3" DEPTH TO ALL TREES, SHRUB, PERENNIAL, AND GROUND COVER AREAS. TREES PLACED IN AREA COVERED BY TURF SHALL RECEIVE A 4 FT WIDE MAXIMUM TREE RING WITH 3" DEPTH SHREDDED HARDWOOD MULCH.
- INSTALLATION OF TREES WITHIN PARKWAYS SHALL BE COORDINATED IN THE FIELD WITH LOCATIONS OF UNDERGROUND UTILITIES. TREES SHALL NOT BE LOCATED CLOSER THAN 5' FROM UNDERGROUND UTILITY LINES AND NO CLOSER THAN 10' FROM UTILITY STRUCTURES. DO NOT DISTURB THE EXISTING PAVING, LIGHTING, OR LANDSCAPING THAT EXISTS ADJACENT TO THE SITE UNLESS OTHERWISE NOTED ON PLAN.
- ALL DISTURBED AREAS TO BE SODDED OR SEEDED, UNLESS OTHERWISE NOTED. SOD/SEED SHALL BE LOCAL HARDY TURF GRASS MIX UNLESS, OTHERWISE NOTED.
- PLANT QUANTITIES SHOWN ARE FOR THE CONVENIENCE OF THE OWNER AND JURISDICTIONAL REVIEW AGENCIES. THE CONTRACTOR IS RESPONSIBLE FOR VERIFYING ALL PLANT QUANTITIES AS DRAWN.
- THE CONTINUED MAINTENANCE OF ALL REQUIRED LANDSCAPING SHALL BE THE RESPONSIBILITY OF THE OWNER OF THE PROPERTY ON WHICH SAID MATERIALS ARE REQUIRED. ALL PLANT MATERIALS REQUIRED BY THIS SECTION SHALL BE MAINTAINED AS LIVING VEGETATION AND SHALL BE PROMPTLY REPLACED IF THE PLANT MATERIAL HAS DIED PRIOR TO FINAL ACCEPTANCE. PLANTING AREAS SHALL BE KEPT FREE OF TRASH, LITTER, AND WEEDS AT ALL TIMES.

NOTES:

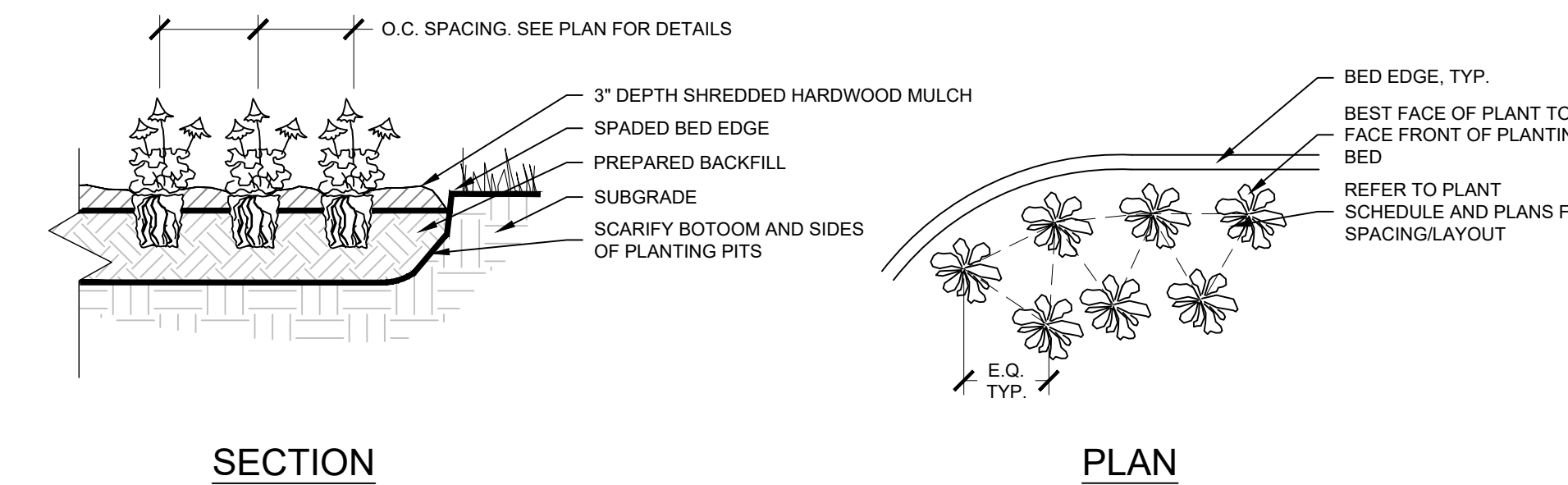
- INSPECT TREE FOR DAMAGED BRANCHES, APPLY CORRECTIVE PRUNING.
- SET ROOT BALL ON UNEXCAVATED OR TAMPED SOIL. TOP OF ROOTBALL SHALL BE TWO INCHES ABOVE SURROUNDING GRADE WITH BURLAP AND WIRE BASKET INTACT.
- REMOVE WIRE BASKET AND BURLAP DOWN 1/2 OF ROOT BALL. REMOVE ANY TWINE, SYNTHETIC MATERIAL, WIRES, STRAPS, BURLAP, ETC. THAT COULD GIRDLE THE TREE OR RESTRICT TREE GROWTH. REMOVE OR CORRECT GIRDLING ROOTS.
- TAMP EXCAVATED SOIL AROUND BASE OF ROOTBALL.
- BACKFILL REMAINDER EXCAVATED SOIL TAMPED LIGHTLY.
- WATER THOROUGHLY WITHIN TWO HOURS USING 10 TO 15 GALLONS OF WATER.
- APPLY MULCH IN EVEN LAYER, KEEPING 6" AWAY FROM ROOT FLARE.
- FINAL LOCATION OF TREE TO BE APPROVED BY OWNER.
- PERFORM PERCOLATION TEST PER PLANTING SPECIFICATIONS. IF SUBSURFACE DRAINAGE PROBLEMS ARE ENCOUNTERED, NOTIFY PROJECT LANDSCAPE ARCHITECT.



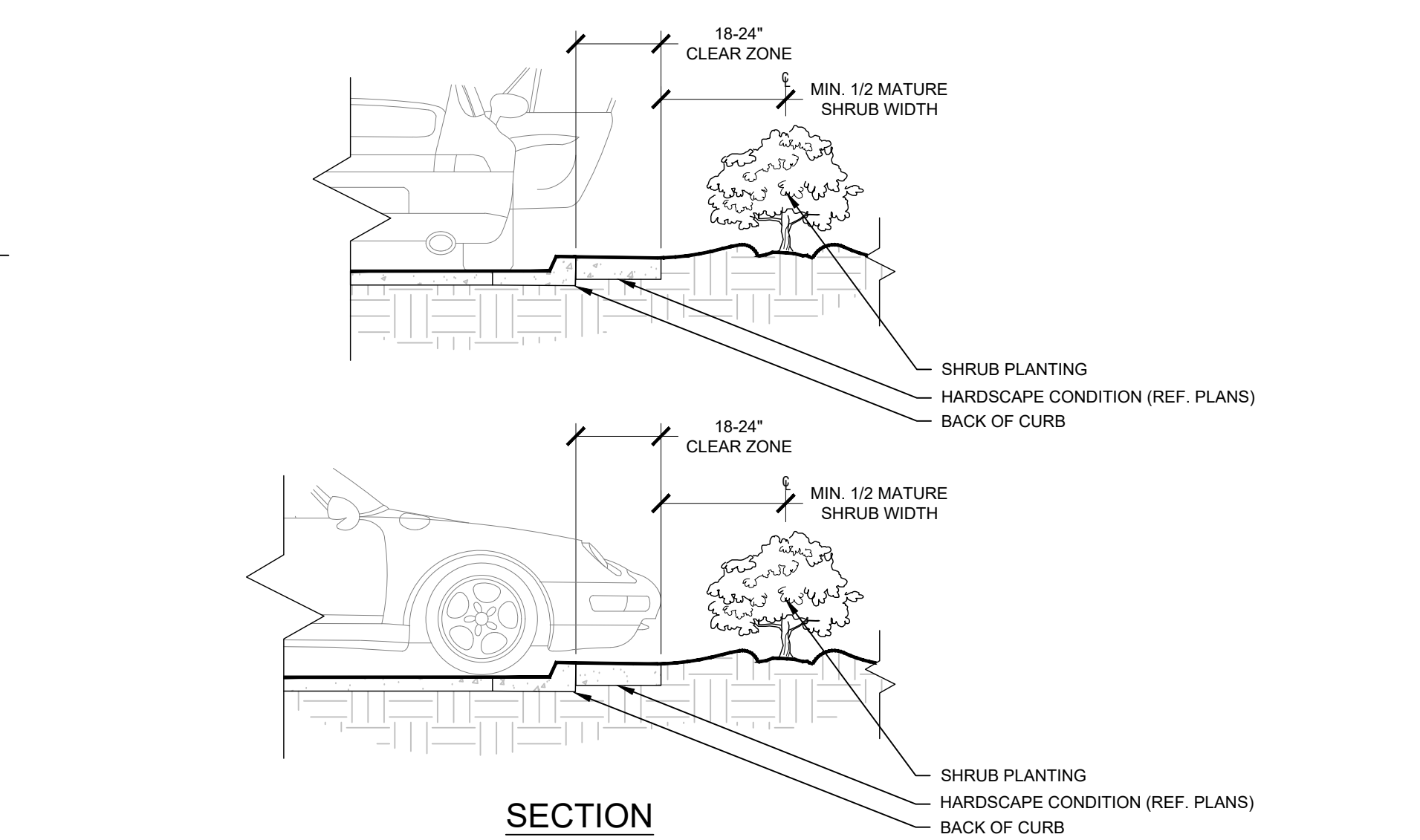
1 TYPICAL TREE PLANTING

NOTES:

- EXCAVATE PLANTING BED.
- BED HEIGHT IS TO BE 2" ABOVE FINISH GRADE AND WELL DRAINED.
- REMOVE CONTAINER, SCORE SOIL MASS TO REDIRECT AND PREVENT CIRCLING ROOTS. CORRECT GIRDLING ROOTS.
- PLANT MATERIAL SHALL BE LAID OUT BY FOLLOWING THE BED EDGE, WORKING TOWARDS THE CENTER OF THE BED USING TRIANGULAR (TAGGERED) SPACING AS PLausible.
- PLUMB AND BACKFILL WITH PLANTING MIX AS SPECIFIED IN LANDSCAPE NOTES.
- APPLY MULCH IN EVEN LAYER, KEEPING AWAY FROM ROOT FLARE. MULCH LIMITS FOR PERENNIALS/GROUND COVER EXTEND TO ALL LIMITS OF PLANTING BED, SEE PLANS FOR BED LAYOUTS.
- SPACING TO BE AS SPECIFIED IN THE PLANT LIST OR AS SHOWN ON DRAWINGS. PERENNIALS SHALL BE PLACED WITH THEIR CENTER 24" FROM EDGE OF BED.



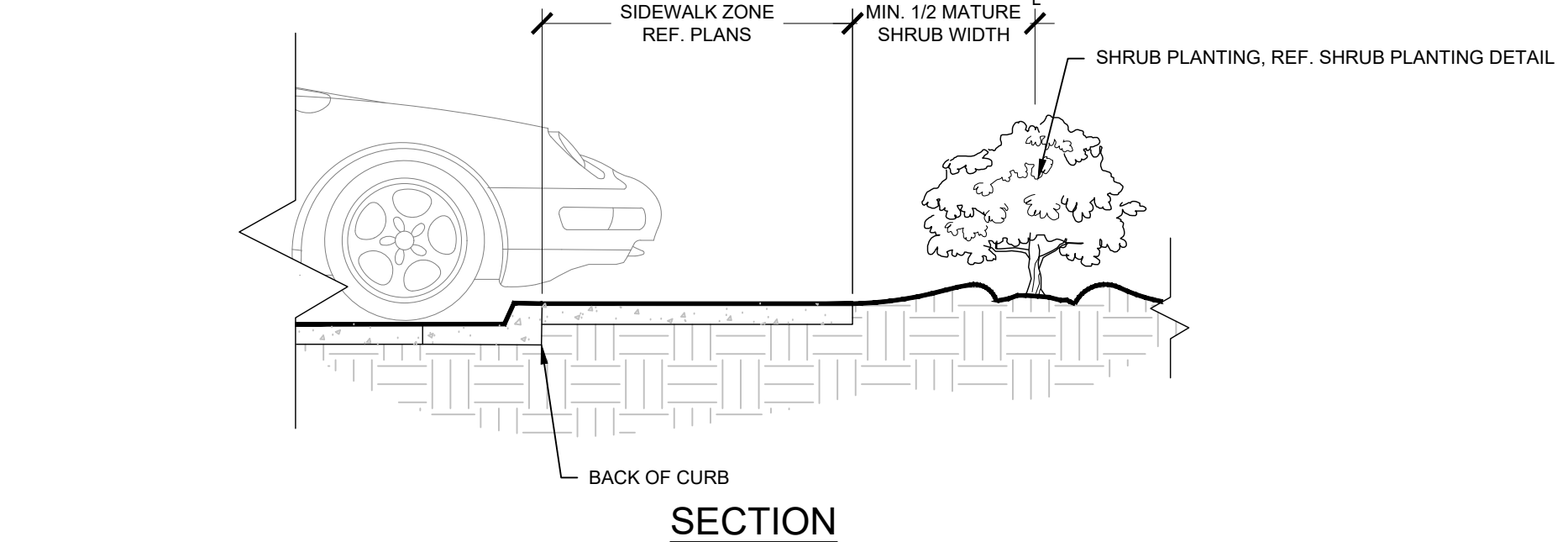
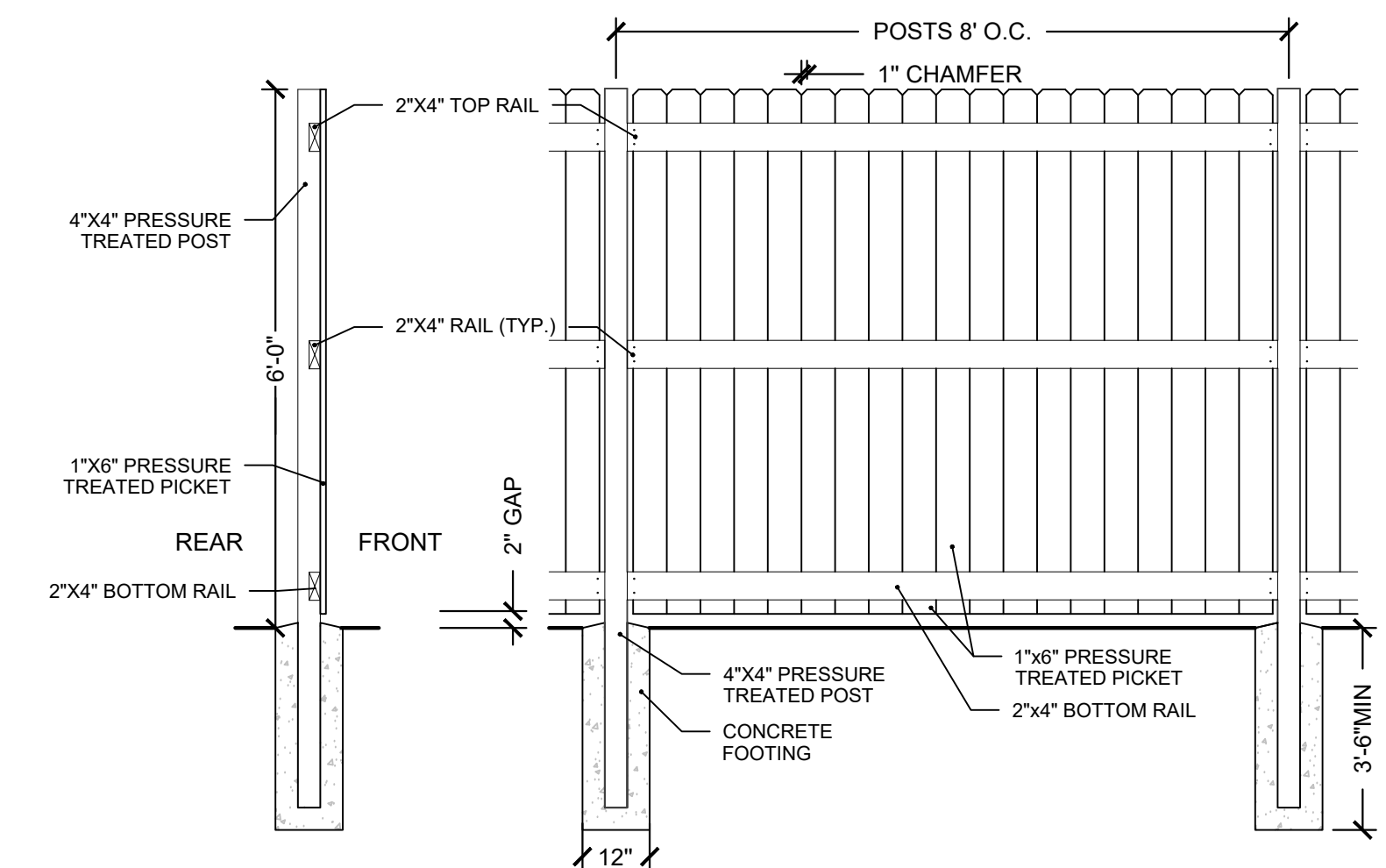
2 PERENNIAL PLANTING



3 SHRUB PLANTING AT CURB

N.T.S.

4 6' PRIVACY SCREEN FENCE

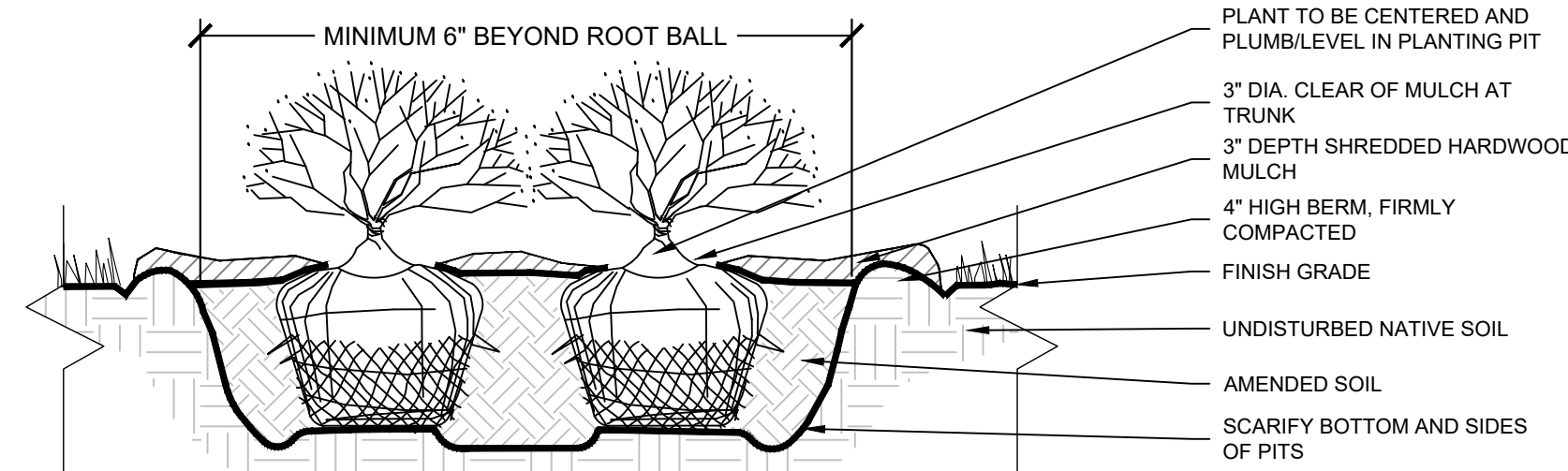


5 SHRUB PLANTING AT SIDEWALK

N.T.S.

NOTES:

- APPLY CORRECTIVE PRUNING.
- SET ROOT BALL OR CONTAINER ON UNEXCAVATED OR TAMPED SOIL. TOP OF ROOTBALL (CONTAINER) SHALL BE ONE INCH ABOVE SURROUNDING GRADE. FOR LARGER SHRUBS WITHIN PLANTING BED DIG A DEEPER PIT ONLY FOR THOSE SHRUBS.
- REMOVE BURLAP FROM TOP HALF THE LENGTH OF ROOTBALL. TWINE AND (IF USED) SYNTHETIC MATERIAL SHALL BE REMOVED FROM PLANTING BED. FOR CONTAINER GROWN SHRUBS, REMOVE CONTAINER AND LOOSEN ROOTS PRIOR TO INSTALLATION.
- REMOVE OR CORRECT GIRDLING ROOTS.
- PLUMB AND BACKFILL WITH AMENDED SOIL PER LANDSCAPE NOTES. WATER THOROUGHLY WITHIN TWO HOURS.
- APPLY MULCH IN EVEN LAYER, KEEPING AWAY FROM ROOT FLARE. MULCH LIMITS FOR SHRUBS EXTEND TO ALL LIMITS OF PLANTING BED, SEE PLANS FOR BED LAYOUTS.



6 SHRUB PLANTING

N.T.S.



| | |
|----------|-----|
| DATE | BY |
| 12/15/23 | BH |
| 01/29/24 | JPM |
| 03/05/24 | JPM |

Kimley»Horn
 © 2024 KIMLEY-HORN AND ASSOCIATES, INC.
 111 WEST JACKSON BLVD., SUITE 1300
 PHOENIX, AZ 85003-4445
 WWW.KIMLEY-HORN.COM

| | |
|--------------|----------|
| SCALE: | AS NOTED |
| DESIGNED BY: | BMH |
| DRAWN BY: | CAE |
| CHECKED BY: | JPM |



LANDSCAPE NOTES & DETAILS

TACO BELL
 1019 E. OGDEN AVE.
 NAPERVILLE, IL

ORIGINAL ISSUE:
 12/15/2023
 KHA PROJECT NO.
 268581000

SHEET NUMBER
L2.0

Drawing name: \\Kimley-Horn\WML\CH\LD\LEV\268581000_MRV_TacoBell_Naperville_IL_V2 Design\CAD\Plan\Sheets\L2.0 - LANDSCAPE PLAN.dwg L2.0 Mar 07, 2024 5:02pm by: jee.cogswell
 This document, together with the concepts and designs presented herein, is intended only for the specific purpose and client for which it was prepared. Reuse of and improper reliance on this document without written authorization and adaptation by Kimley-Horn and Associates, Inc. shall be without liability to Kimley-Horn and Associates, Inc.