



22 E. Chicago Avenue  
Suite 200A  
Naperville, IL 60540  
T 630.961.1787

hitchcockdesigngroup.com

PREPARED FOR  
Inter Continental  
Real Estate & Development  
Corporation  
2221 Camden Court, Suite 200  
Oak Brook, IL 60523

PROJECT  
**City Gate  
West**  
Naperville, IL

ISSUED  
July 20, 2020  
REVISIONS

No	Date	Issue
1	05-13-2020	PUD 1st Review
2	12-23-2020	Revised for City and City Review (Date: 08/11/2020)
3	01-14-2021	Revised for City Council
4	01-25-2021	Per City Council Comments
5	03-10-2021	Revised for City Council
6	03-25-2021	Revised for City Council

CHECKED BY  
GBR

DRAWN BY  
NAA

SHEET TITLE  
**PRELIMINARY  
PUD LANDSCAPE  
PLAN**

SCALE IN FEET  
1" = 150'

0' 75' 150' 450'

NORTH SHEET NUMBER



©2020 Hitchcock Design Group

**PLANTING LEGEND**

	PARKING LOT TREES	172
	PERIMETER TREES	124
	PARKWAY TREES	85
	ORNAMENTAL TREES	14
	ADDITIONAL SHADE TREES	16
	TURF SEED	597,392 SF
	REQUIRED SIGN PLANTING 1 SF OF PLANTING / 1 SF OF SIGN	3,565 SF
	REQUIRED FOUNDATION PLANTING SHRUBS, ORNAMENTAL GRASSES, PERENNIAL MIX	46,518 SF
	REQUIRED PARKING LOT BUFFER 30" MIN. HEIGHT, SHRUBS AT 4" O.C. MAX.	8,418 SF

**NOTE:**

1. Keep all trees and large bushes 5' away from underground electric facilities and 10' away from all above ground electric facilities.
2. Keep all trees and large bushes 10' away from any storm structure and 5' away from any storm sewer line.
3. Keep all FDC locations clear of landscape material.

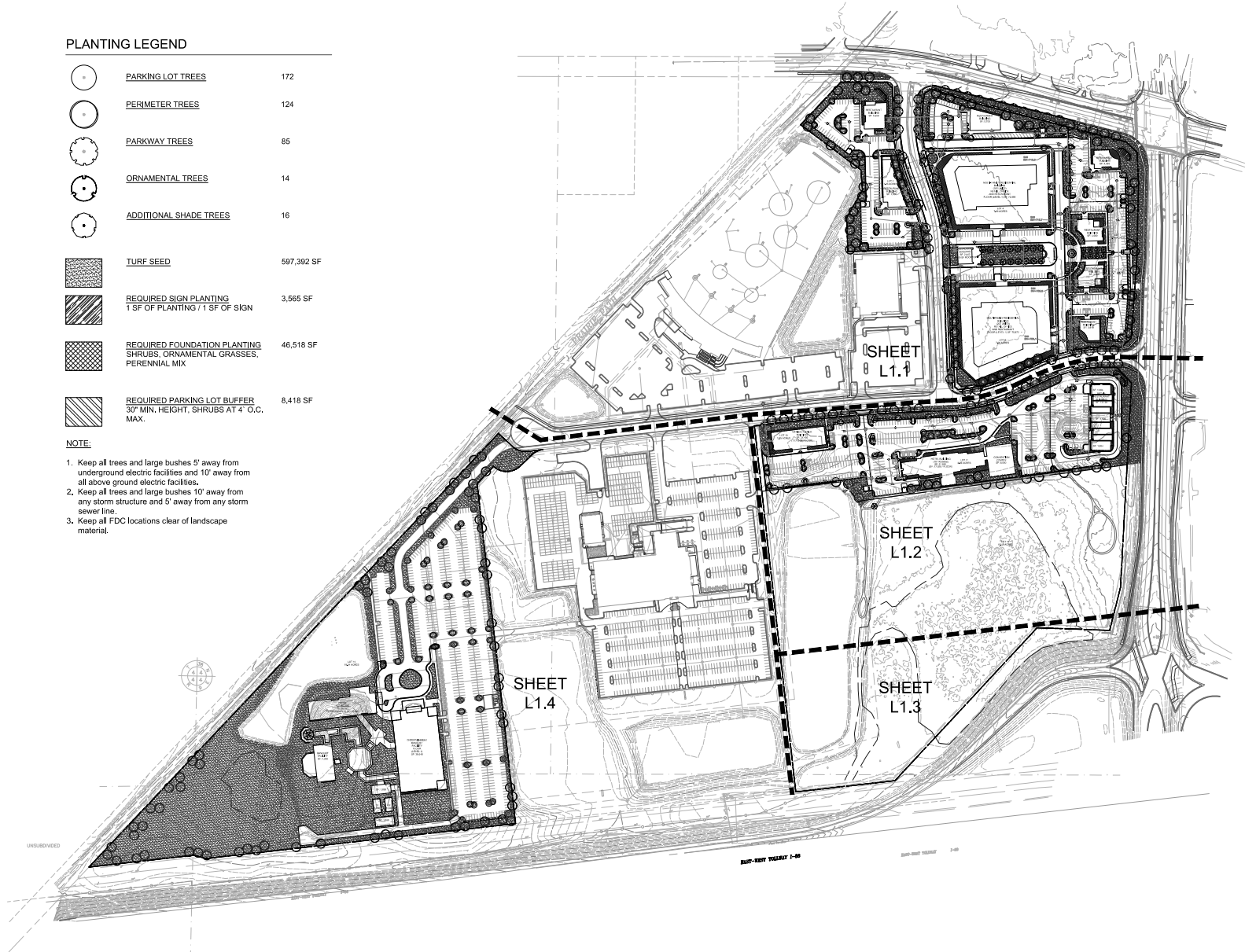
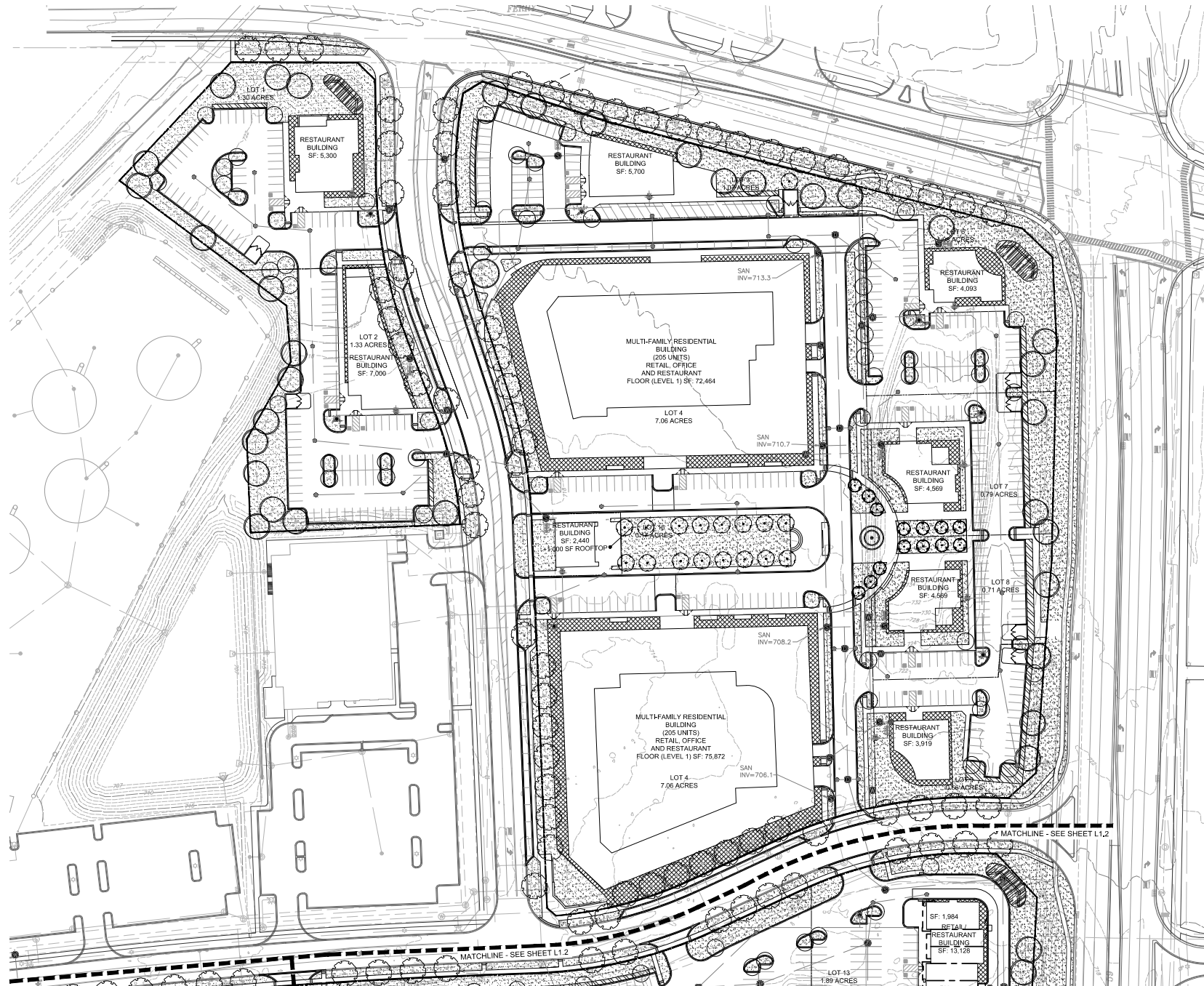


EXHIBIT H



22 E. Chicago Avenue  
Suite 200A  
Naperville, IL 60540  
T 630.961.1787

hitchcockdesigngroup.com

PREPARED FOR  
Inter Continental  
Real Estate & Development  
Corporation  
2221 Camden Court, Suite 200  
Oak Brook, IL 60523

PROJECT  
**City Gate  
West**  
Naperville, IL

ISSUED  
July 20, 2020  
REVISIONS

No	Date	Issue
1	05-13-2020	PUD 1st Review
2	12-23-2020	Revised for City Council
3	01-14-2021	Revised for City Council
4	01-25-2021	Per City Council Comments
5	03-10-2021	Revised for City Council
6	03-25-2021	Revised for City Council

CHECKED BY: GBR  
DRAWN BY: NAA

SHEET TITLE  
**PRELIMINARY  
PUD LANDSCAPE  
PLAN**

SCALE IN FEET  
1" = 50'

0' 25' 50' 150'

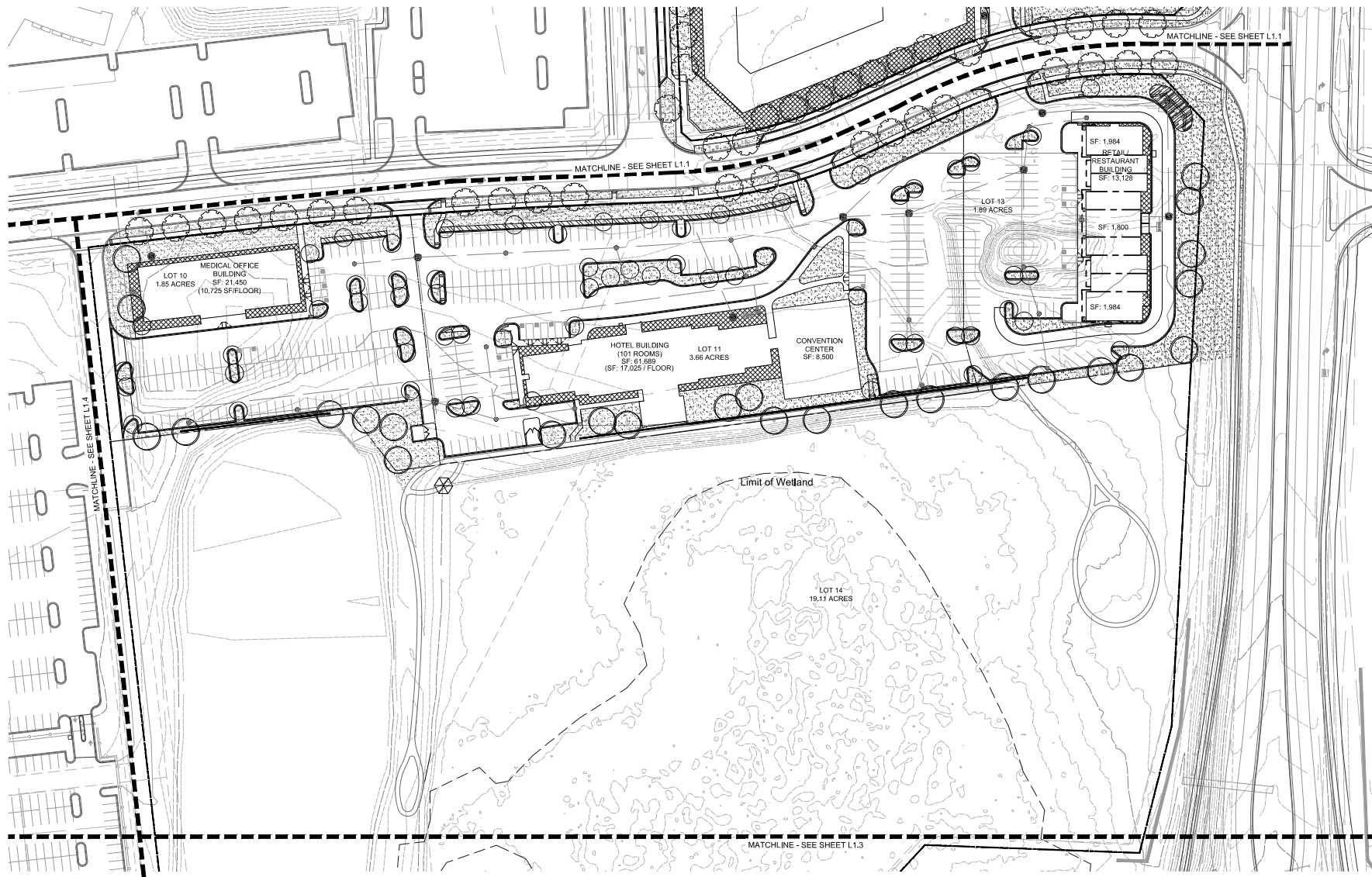
NORTH SHEET NUMBER



©2020 Hitchcock Design Group

P:\Projects\150720 City Gate West\03 Landscape\150720 Landscape Plan.dwg

EXHIBIT H



22 E. Chicago Avenue  
Suite 200A  
Naperville, IL 60540  
T 630.961.1787

hitchcockdesigngroup.com

PREPARED FOR  
Inter Continental  
Real Estate & Development  
Corporation  
2221 Camden Court, Suite 200  
Oak Brook, IL 60523

PROJECT  
**City Gate  
West**  
Naperville, IL

ISSUED  
July 20, 2020  
REVISIONS

No	Date	Issue
1	05-13-2020	PUD 1st Review
2	12-23-2020	Revised for Dept and City Review (Date: 08/11/2020)
3	01-14-2021	Revised for City Council
4	01-25-2021	Per City Council Comments
5	03-10-2021	Revised for City Council
6	03-25-2021	Revised for City Council

CHECKED BY  
GBR

DRAWN BY  
NAA

SHEET TITLE  
**PRELIMINARY  
PUD LANDSCAPE  
PLAN**

SCALE IN FEET  
1" = 50'

0' 25' 50' 150'

NORTH SHEET NUMBER

**L1.2**

©2020 Hitchcock Design Group

#P:\proj\15170\City Gate West\15170.dwg (15170) - Landscape Plan

EXHIBIT H



22 E. Chicago Avenue  
Suite 200A  
Naperville, IL 60540  
T 630.961.1787

hitchcockdesigngroup.com

PREPARED FOR  
Inter Continental  
Real Estate & Development  
Corporation

2221 Camden Court, Suite 200  
Oak Brook, IL 60523

PROJECT  
**City Gate  
West**  
Naperville, IL

ISSUED  
July 20, 2020  
REVISIONS

No	Date	Issue
1	05-13-2020	PUD 1st Review
2	12-23-2020	Revised for City and City Review (Date: 08/11/2021)
3	01-14-2021	Revised for City Council
4	01-25-2021	Per City Council Comments
5	03-10-2021	Revised for City Council
6	03-25-2021	Revised for City Council

CHECKED BY  
GBR

DRAWN BY  
NAA

SHEET TITLE  
**PRELIMINARY  
PUD LANDSCAPE  
PLAN**

SCALE IN FEET  
1" = 50'

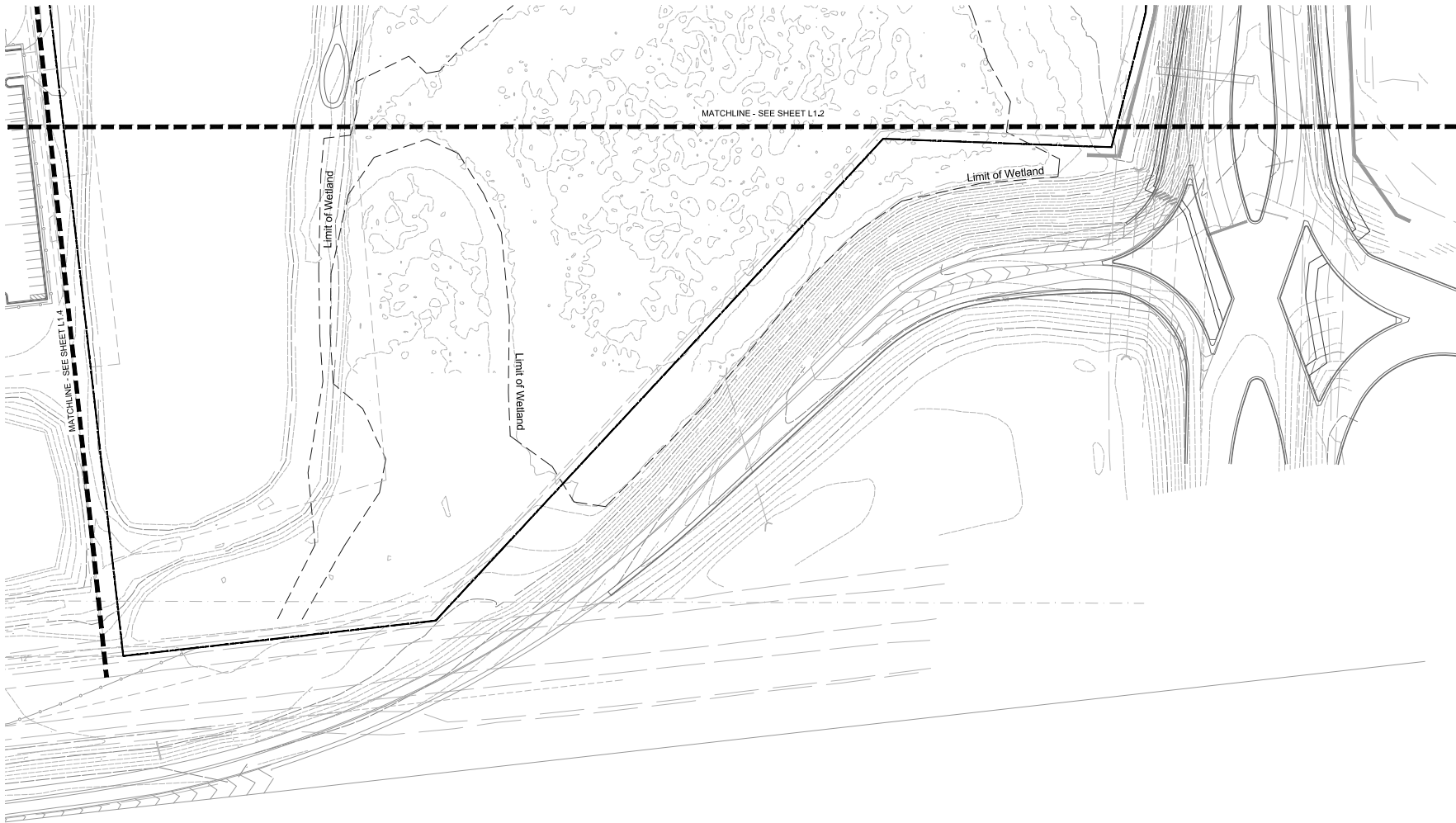
0' 25' 50' 150'

NORTH SHEET NUMBER



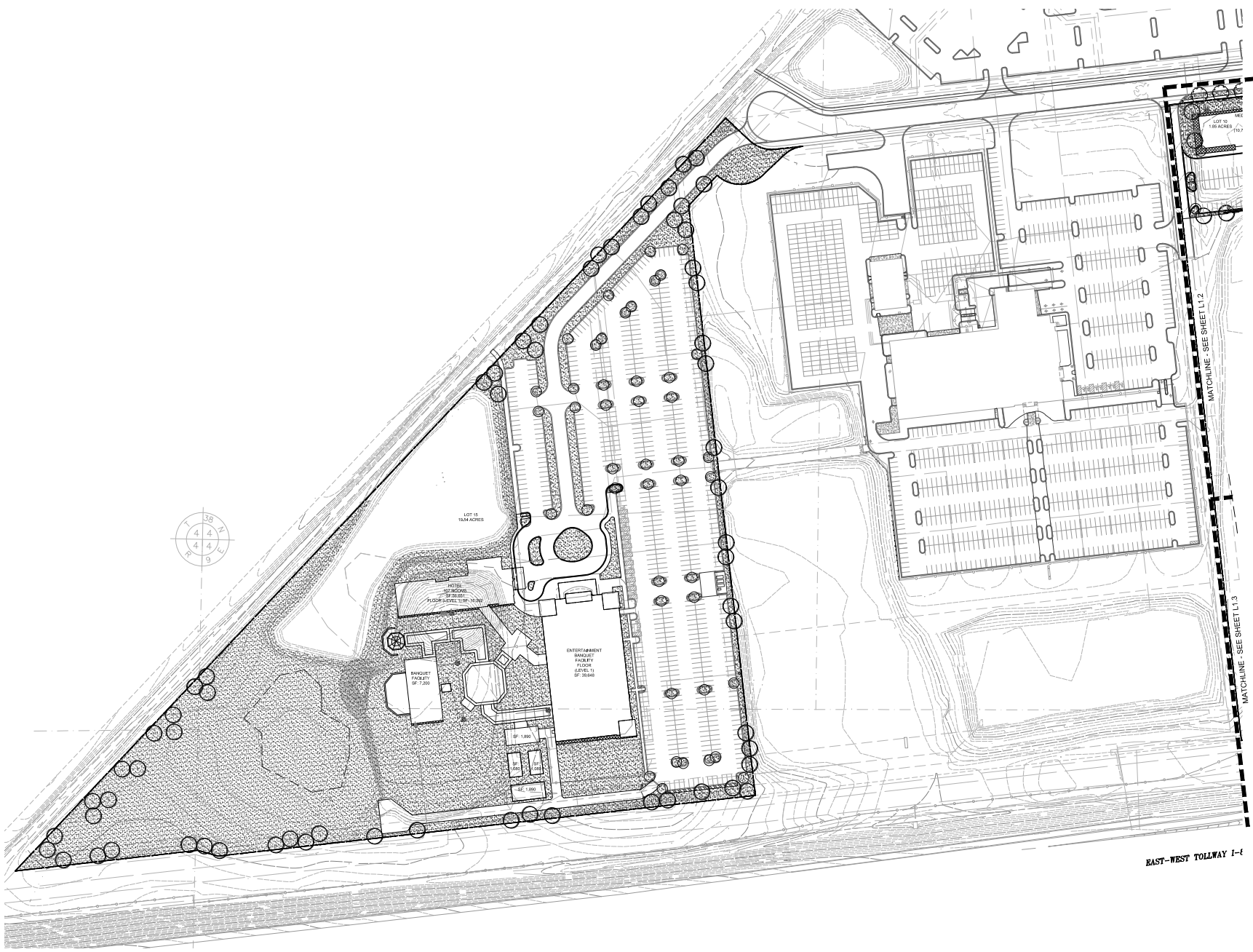
**L1.3**

©2020 Hitchcock Design Group



#P:\proj\15175\15175 City Gate West\15175 Landscape Plan.dwg

EXHIBIT H



EAST-WEST TOLLWAY I-4

LOT 10  
14.4 ACRES

LOT 11  
14.4 ACRES

BANQUET FACILITY  
SF 1,200

ENTERTAINMENT  
BANQUET FACILITY  
SF 30,048

HOTEL  
SF 22,000  
11000' x 100' x 100' x 100'

MATCHLINE - SEE SHEET L1.2

MATCHLINE - SEE SHEET L1.3



22 E. Chicago Avenue  
Suite 200A  
Naperville, IL 60540  
T 630.961.1787

hitchcockdesigngroup.com

PREPARED FOR  
Inter Continental  
Real Estate & Development  
Corporation

2221 Camden Court, Suite 200  
Oak Brook, IL 60523

PROJECT  
**City Gate  
West**  
Naperville, IL

ISSUED  
July 20, 2020

No	Date	Issue
1	05-13-2020	PUD 1st Review
2	12-23-2020	Revised for City and City Review (Date: 08/11/2020)
3	01-14-2021	Revised for City Council
4	01-25-2021	Per City Council Comments
5	03-10-2021	Revised for City Council
6	03-25-2021	Revised for City Council

CHECKED BY: GBR  
DRAWN BY: NAA

SHEET TITLE  
**PRELIMINARY  
PUD LANDSCAPE  
PLAN**

SCALE IN FEET  
1" = 50'



NORTH SHEET NUMBER

**L1.4**

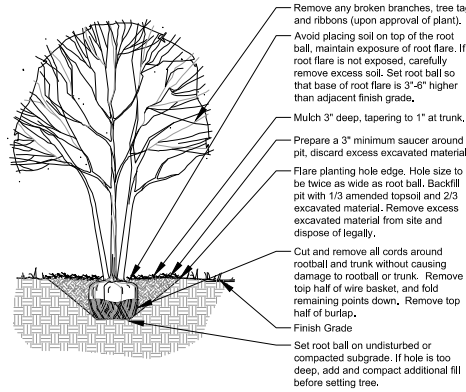
©2020 Hitchcock Design Group

EXHIBIT H

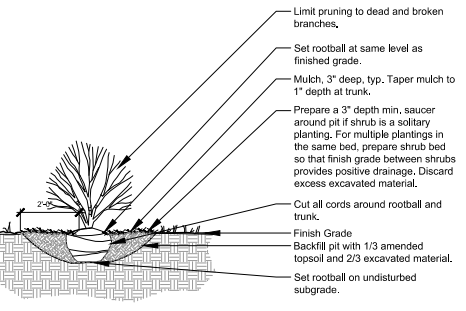
#P:\Project\Hitchcock\City Gate West\Design\03-2021\03-2021-Landscape-Review

## PLANT REQUIREMENT TABLE

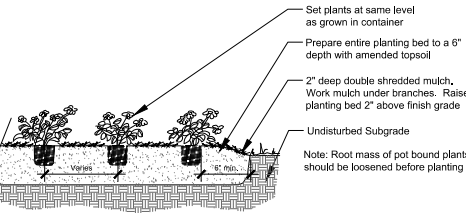
Item	Description	Quantity
1	Deciduous Tree	1
2	Evergreen Tree	1
3	Shrub	1
4	Annual/Perennial	1



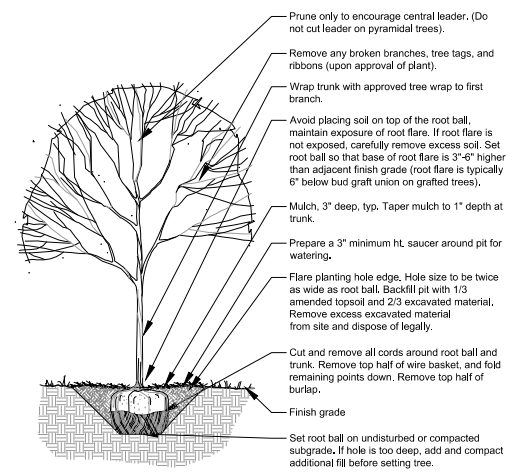
**3 Ornamental Tree Planting**  
Scale: 1/2" = 1'-0"



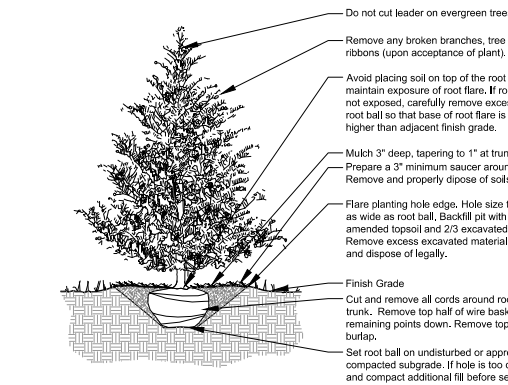
**4 Shrub Planting**  
Scale: 1/2" = 1'-0"



**5 Annual and Perennial Planting**  
Scale: 1/2" = 1'-0"



**1 Deciduous Tree Planting**  
Scale: 1/2" = 1'-0"



**2 Evergreen Tree Planting**  
Scale: 1/2" = 1'-0"



22 E. Chicago Avenue  
Suite 200A  
Naperville, IL 60540  
T 630.961.1787

hitchcockdesigngroup.com

PREPARED FOR  
Inter Continental  
Real Estate & Development  
Corporation  
2221 Camden Court, Suite 200  
Oak Brook, IL 60523

PROJECT  
**City Gate West**  
Naperville, IL

ISSUED  
July 20, 2020  
REVISIONS

No	Date	Issue
1	05-13-2020	PUD 1st Review
2	12-23-2020	Revised for City Council
3	01-14-2021	Revised for City Council
4	01-23-2021	Per City Council Comments
5	03-10-2021	Revised for City Council
6	03-25-2021	Revised for City Council

CHECKED BY: GBR  
DRAWN BY: NAA

SHEET TITLE  
**DETAILS**

SCALE IN FEET  
as noted

NORTH SHEET NUMBER



©2020 Hitchcock Design Group

#P:\Project\152107\City Gate West\152107.dwg (152107.dwg) (152107.dwg) (152107.dwg) (152107.dwg)