



URSULINE AVENUE

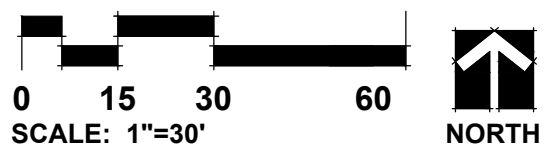
BOARD ON BOARD FENCE

BOARD ON BOARD FENCE

INFILTRATION TRENCH

NAPER BOULEVARD

INFILTRATION BASIN



ILLUSTRATIVE SITE PLAN
 AUBURN MANOR
 NAPERVILLE, ILLINOIS

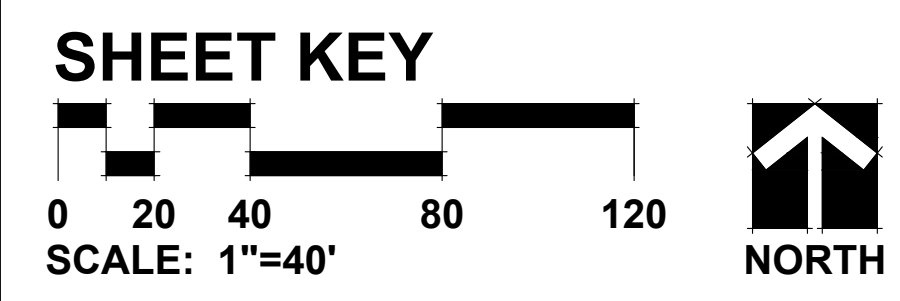
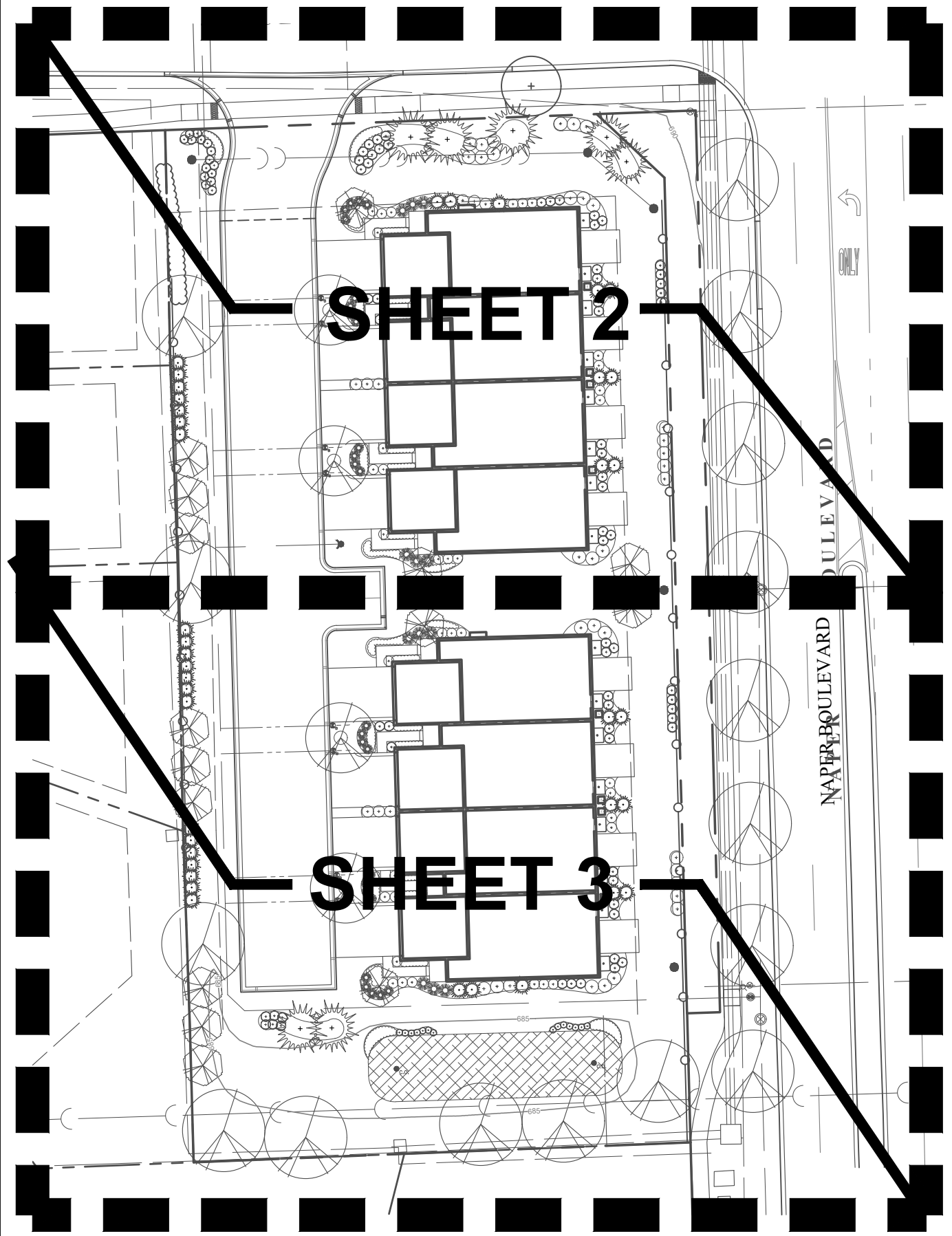
11/21/2017



GARY R. WEBER
 ASSOCIATES, INC.

LAND PLANNING
 ECOLOGICAL CONSULTING
 LANDSCAPE ARCHITECTURE
 212 SOUTH MAIN STREET
 WHEATON, ILLINOIS 60892
 PHONE: 630-668-7197

L:\Projects\DR1712\Acad\DR1712_B01_011L.dwg



GENERAL NOTES

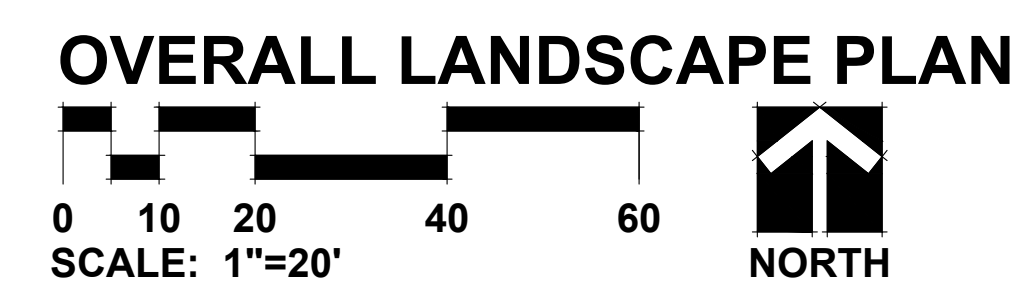
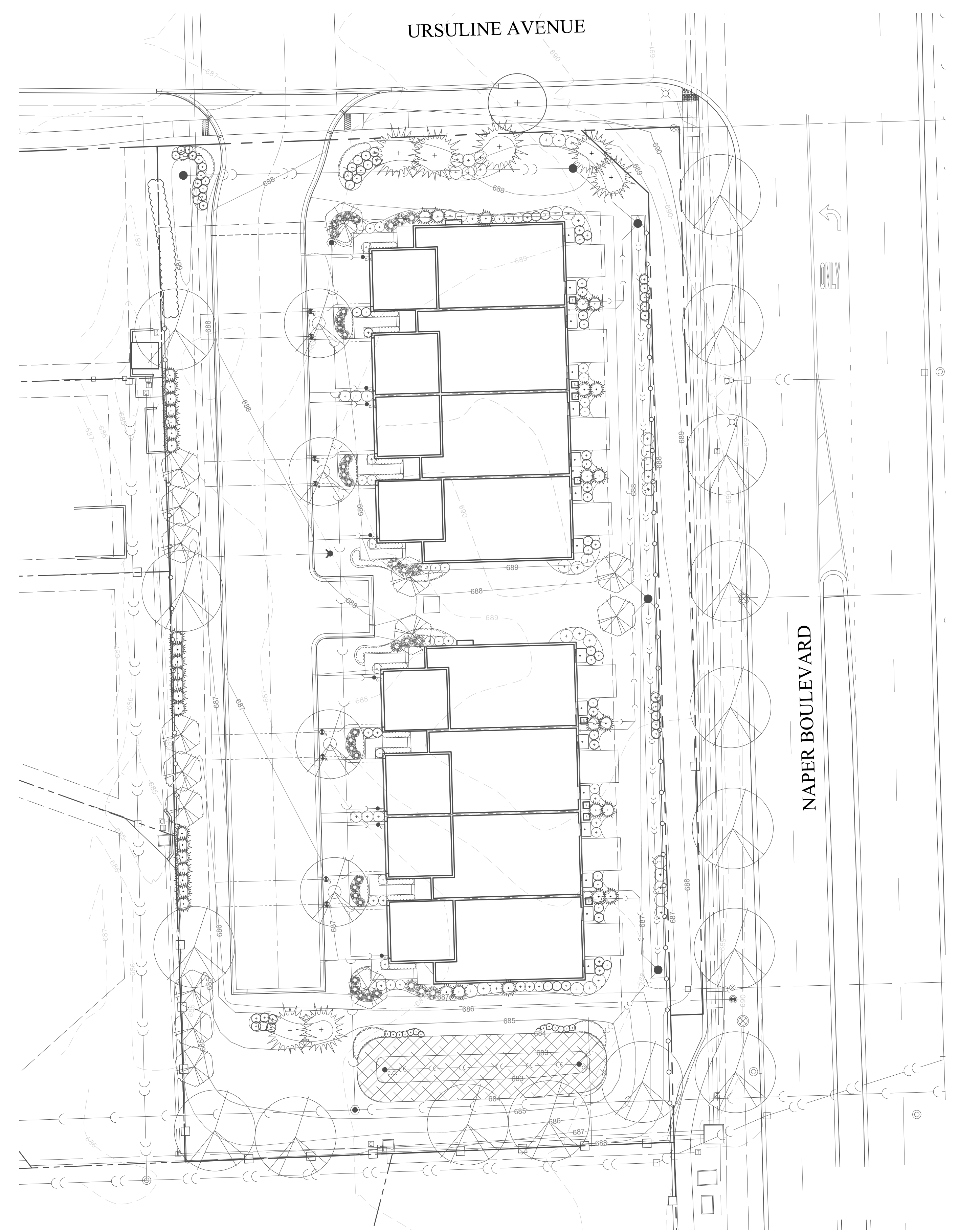
- TREES SHALL BE INSTALLED A MINIMUM OF FIVE (5) FEET HORIZONTALLY FROM UNDERGROUND ELECTRICAL FEEDERS, SANITARY SEWERS, SANITARY SERVICES, WATER MAINS, AND WATER SERVICES. TREES SHALL BE INSTALLED A MINIMUM OF TEN (10) FEET HORIZONTALLY FROM UTILITY STRUCTURES AND APPURTENANCES, INCLUDING, BUT NOT LIMITED TO, MANHOLES, VALVE VAULTS, VALVE BOXES AND FIRE HYDRANTS. NO TREES, SHRUBS OR OBSTACLES WILL BE ALLOWED 10' IN FRONT OF, 5' ON THE SIDES, AND 7' TO THE REAR OF THE ELECTRICAL TRANSFORMER.
- LOCATION OF TREES MAY REQUIRE ADJUSTMENT BASED ON FINAL ENGINEERING PLANS.
- CONTRACTOR SHALL VERIFY UNDERGROUND UTILITY LINES AND IS RESPONSIBLE FOR ANY DAMAGE.
- CONTRACTOR SHALL VERIFY ALL EXISTING CONDITIONS IN THE FIELD PRIOR TO CONSTRUCTION AND SHALL NOTIFY LANDSCAPE ARCHITECT OF ANY VARIANCE.
- MATERIAL QUANTITIES SHOWN ARE FOR CONTRACTOR'S CONVENIENCE ONLY. THE CONTRACTOR MUST VERIFY ALL MATERIAL AND SUPPLY SUFFICIENT MATERIALS TO COMPLETE THE JOB PER PLAN.
- THE LANDSCAPE ARCHITECT RESERVES THE RIGHT TO INSPECT TREES AND SHRUBS EITHER AT PLACE OF GROWTH OR AT SITE BEFORE PLANTING, FOR COMPLIANCE WITH REQUIREMENTS OF VARIETY, SIZE AND QUALITY.
- WORK SHALL CONFORM TO AMERICAN STANDARD FOR NURSERY STOCK, STATE OF ILLINOIS HORTICULTURAL STANDARDS, AND LOCAL MUNICIPAL REQUIREMENTS.
- CONTRACTOR SHALL SECURE AND PAY FOR ALL PERMITS, FEES, AND INSPECTIONS NECESSARY FOR THE PROPER EXECUTION OF THIS WORK AND COMPLY WITH ALL CODES APPLICABLE TO THIS WORK.
- SEE GENERAL CONDITIONS AND SPECIFICATIONS FOR LANDSCAPE WORK FOR ADDITIONAL REQUIREMENTS.

NATURALIZED AREA PLANTINGS

Key	Description
	LOW PROFILE PRAIRIE SEED MIX

PLANT LIST

Key	Qty.	Botanical/Common Name	Size	Remarks
SHADE TREES				
AF4	2	Acer x freemanii 'Jeffer's Red' AUTUMN BLAZE MAPLE	4" Cal.	
AR4	2	Acer rubrum 'Franksred' RED SUNSET RED MAPLE	4" Cal.	
QB	3	Quercus bicolor SWAMP WHITE OAK	2 1/2" Cal.	
SR	4	Syringa reticulata 'Ivory Silk' IVORY SILK JAPANESE TREE LILAC	2 1/2" Cal.	
TT	3	Tilia tomentosa 'Sterling' STERLING SILVER LINDEN	2 1/2" Cal.	
UM	2	Ulmus 'Morton Glossy' TRIUMPH ELM	2 1/2" Cal.	
UM4	4	Ulmus 'Morton Glossy' TRIUMPH ELM	4" Cal.	
ORNAMENTAL TREES				
AG	2	Amelanchier grandiflora APPLE SERVICEBERRY	8' Ht.	Multi-stem
CC	8	Cercis canadensis EASTERN REDBUD	8' Ht.	Multi-stem
MP	5	Malus 'Prairifire' PRAIRIFIRE CRABAPPLE	8' Ht.	Multi-stem
EVERGREEN TREES				
AC	3	Abies concolor WHITE FIR	8' Ht.	
PP	4	Picea pungens GREEN COLORADO SPRUCE	8' Ht.	
DECIDUOUS SHRUBS				
AM	2	Aronia melanocarpa 'Morton' IROQUOIS BEAUTY BLACK CHOKEBERRY	24" Tall	3' O.C.
CA	16	Cornus sericea 'santi' REDSIER DOGWOOD	36" Tall	4' O.C.
CS	9	Cornus sanguinea 'Coto' ARCTIC SUN DOGWOOD	24" Tall	3' O.C.
HP	12	Hydrangea paniculata 'Jane' LITTLE LIME HYDRANGEA	24" Tall	3' O.C.
HA	6	Hydrangea arborescens 'Annabelle' ANNABELLE HYDRANGEA	24" Tall	3' O.C.
RA	12	Rhus aromatica 'Gro-Low' GRO-LOW FRAGRANT SUMAC	24" Wide	4' O.C.
RP	3	Rhododendron 'PJM' PJM RHODODENDRON	24" Tall	3' O.C.
SP	4	Syringa patula 'Miss Kim' MISS KIM LILAC	36" Tall	4' O.C.
VD	6	Viburnum dentatum 'Rozzani' RASPBERRY TART VIBURNUM	36" Tall	4' O.C.
VT	9	Viburnum trilobum 'Redwing' JN SELECT AMERICAN CRANBERRYBUSH VIBURNUM	36" Tall	4' O.C.
EVERGREEN SHRUBS				
JK	26	Juniperus chinensis var. sargentii 'Viridis' GREEN SARGENT JUNIPER	24" Wide	4' O.C.
TM	12	Taxus x media 'Densiflora' DENSE YEW	30" Tall	4' O.C.
TO	18	Thuja occidentalis 'Techny' TECHNY ARBORVITAE	6' Ht.	
PERENNIALS AND ORNAMENTAL GRASSES				
CK	15	Calamagrostis acutiflora 'Karl Foerster' FEATHER REED GRASS	#3	36" O.C.
EM	16	Echinacea 'Magnus' MAGNUS CONEFLOWER	#1	18" O.C.
GB	18	Geranium 'Brookside' BROOKSIDE GERANIUM	#1	18" O.C.
HH	26	Hemerocallis 'Happy Returns' HAPPY RETURNS DAYLILY	#1	18" O.C.
HR	29	Hemerocallis 'Rosy Returns' ROSY RETURNS DAYLILY	#1	18" O.C.
HO	38	Hosta 'Patriot' PATRIOT HOSTA	#1	18" O.C.
HS	42	Hosta 'Hadspen Blue' HADSPEN BLUE HOSTA	#1	18" O.C.
PV	24	Panicum virgatum 'Rotstrahlbusch' RED SWITCH GRASS	#3	36" O.C.
PN	36	Panicum virgatum 'Northwind' NORTHWIND SWITCH GRASS	#3	36" O.C.
HT	33	Heuchera 'Tiramisu' TIRAMISU CORAL BELLS	#1	18" O.C.
RF	16	Rudbeckia fulgida 'Goldsturm' BLACK-EYED SUSAN	#1	18" O.C.
SH	20	Sporobolus heterolepis PRAIRIE DROPSEED	#1	24" O.C.
MATERIALS				
37	Shredded Hardwood Bark Mulch	C.Y.		
2,472	Sod	S.Y.		
464	6' Board on Board Fence	L.F.		



GRWA
GARY R. WEBER ASSOCIATES, INC.
 LAND PLANNING
 ECOLOGICAL CONSULTING
 LANDSCAPE ARCHITECTURE
 212 SOUTH MAIN STREET
 WHEATON, ILLINOIS 60187
 PHONE: 630-668-7197

CLIENT
D.R. HORTON
America's Builder
 750 E. BUNKER COURT, SUITE 500
 VERNON HILLS, ILLINOIS 60061
 CIVIL ENGINEER
HAEGER ENGINEERING
 100 EAST STATE PARKWAY
 SCHAUMBURG, ILLINOIS 60173

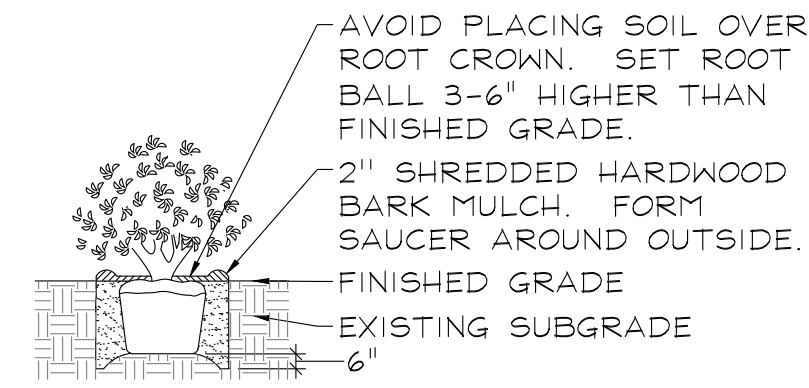
AUBURN MANOR
 NAPERVILLE, ILLINOIS
OVERALL LANDSCAPE PLAN

1	10.25.17
REVISIONS	

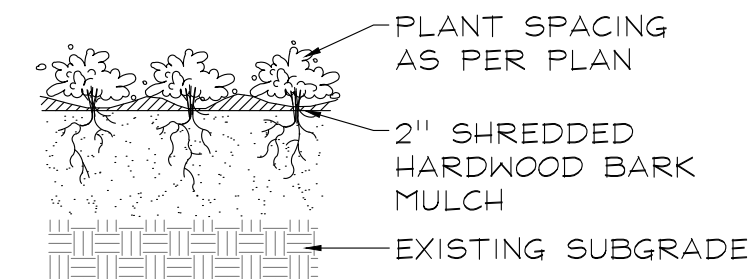
DATE	9.05.17
PROJECT NO.	DR1712
DRAWN	MGM
CHECKED	JCT
SHEET NO.	



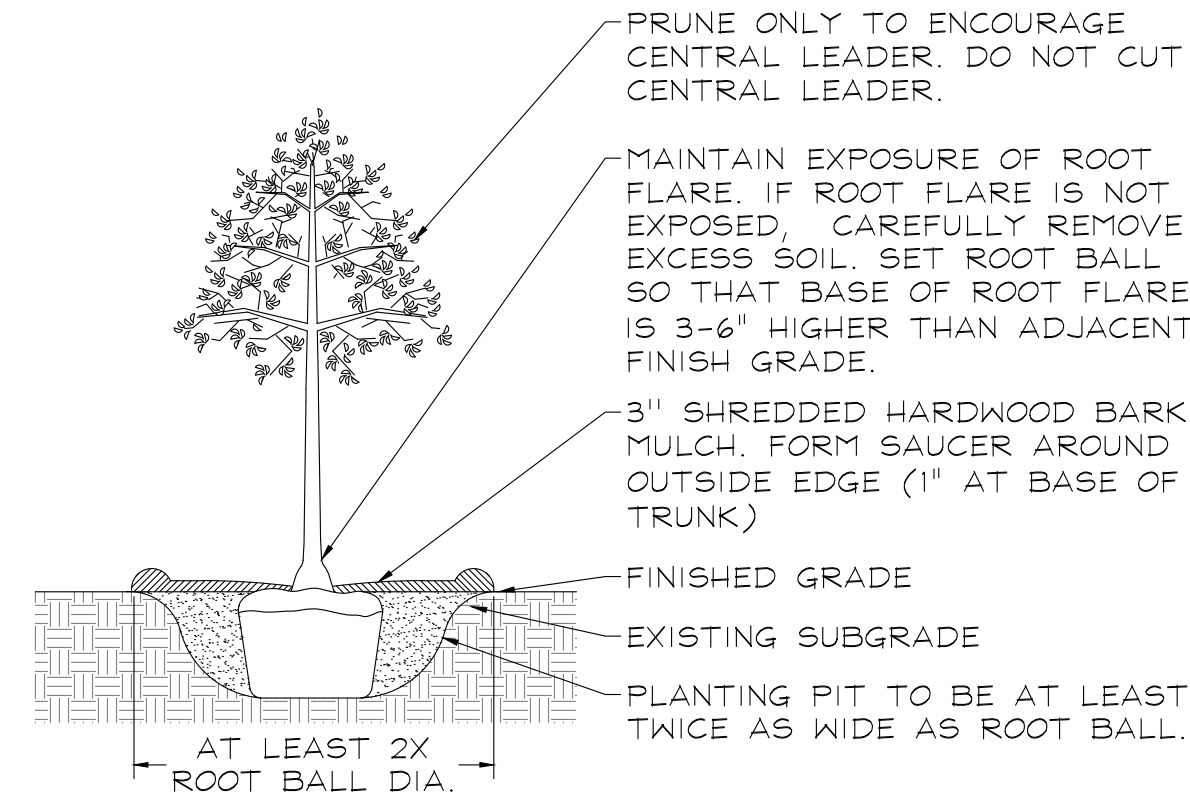
PLANTING DETAILS



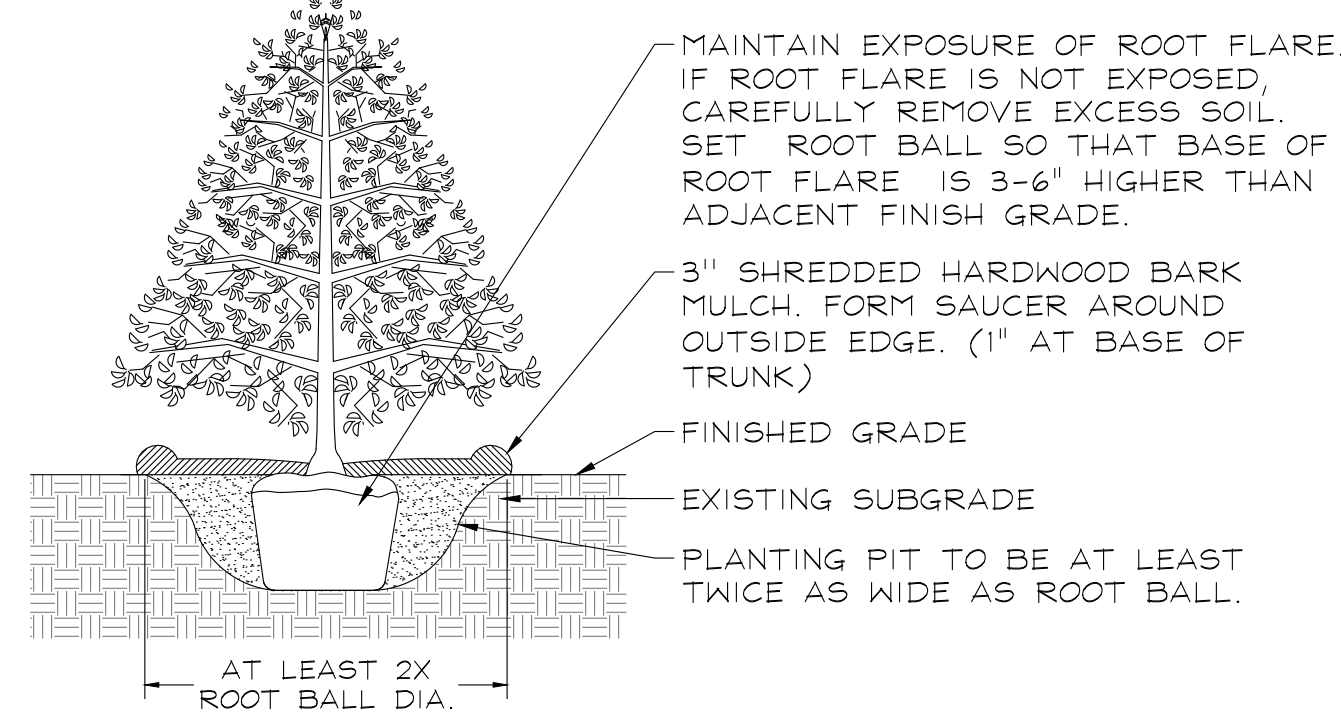
DECIDUOUS AND EVERGREEN SHRUBS
 NOT TO SCALE



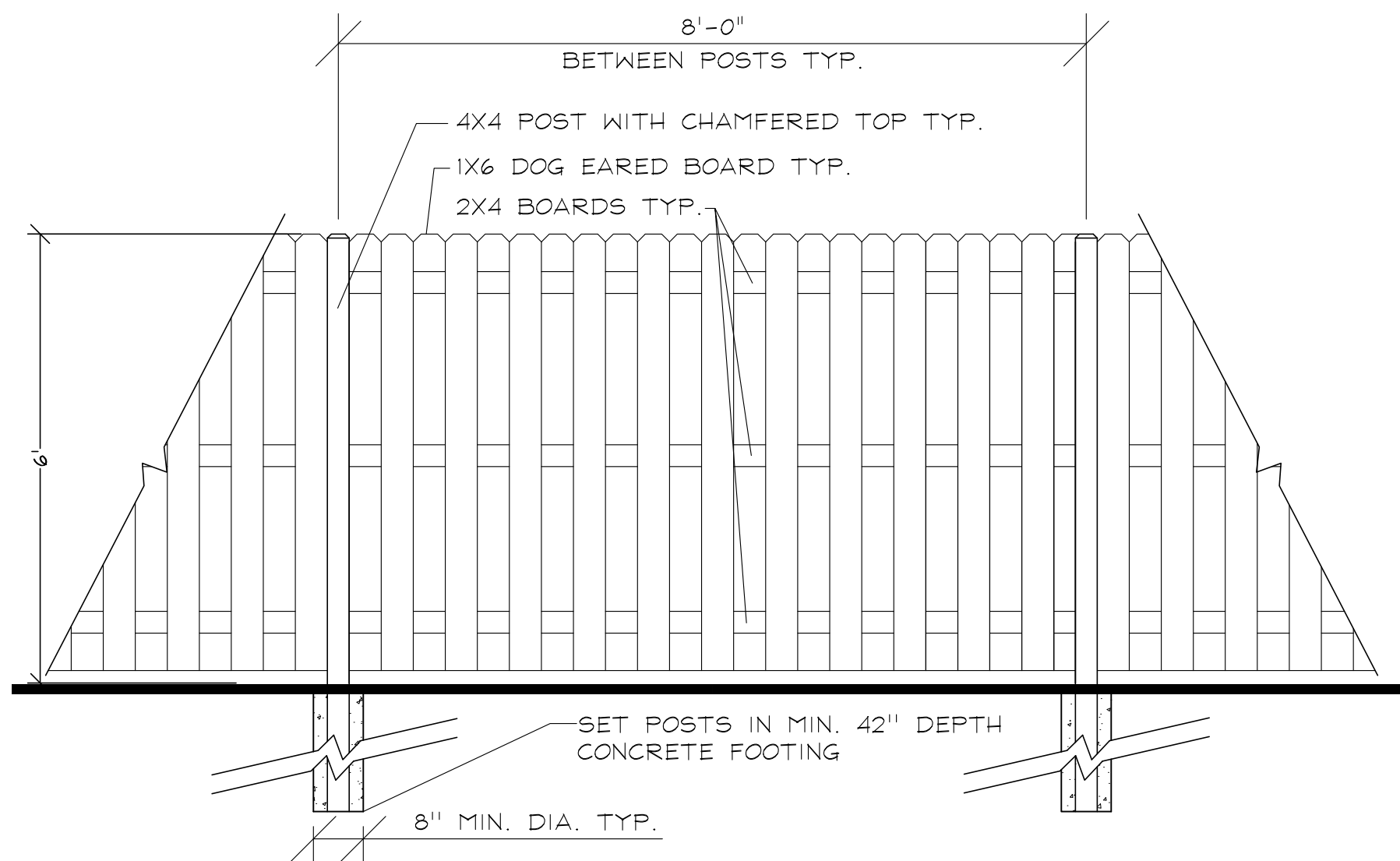
PERENNIALS AND GROUNDCOVERS
 NOT TO SCALE



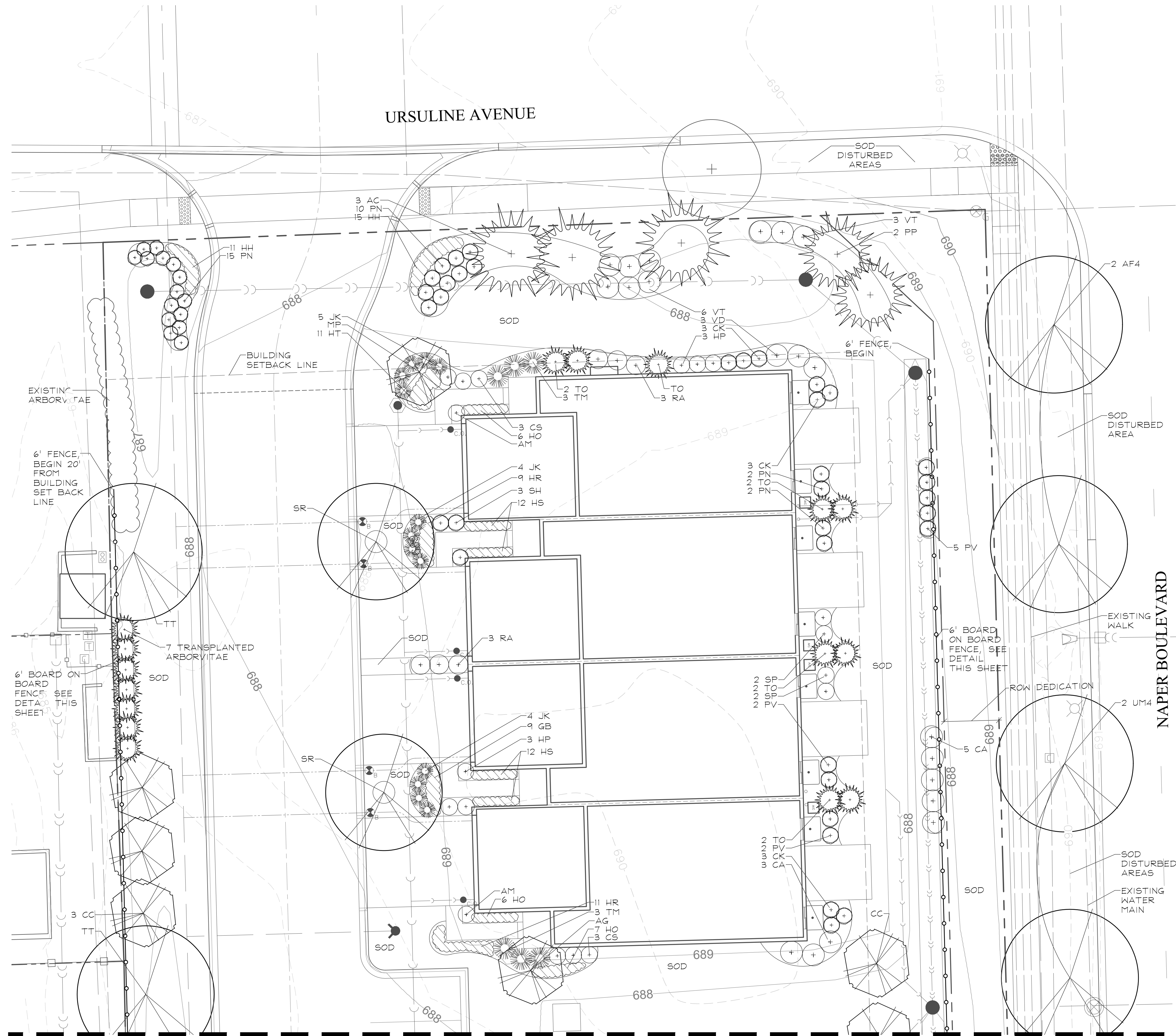
DECIDUOUS TREES
 NOT TO SCALE



EVERGREEN TREES
 NOT TO SCALE



6' BOARD ON BOARD FENCE
 SCALE: NTS



GARY R. WEBER ASSOCIATES, INC.
 LAND PLANNING
 ECOLOGICAL CONSULTING
 LANDSCAPE ARCHITECTURE
 212 SOUTH MAIN STREET
 WHEATON, ILLINOIS 60187
 PHONE: 630-668-7197

CLIENT
D.R. HORTON
America's Builder
 750 E. BUNKER COURT, SUITE 500
 VERNON HILLS, ILLINOIS 60061
 CIVIL ENGINEER
HAEGER ENGINEERING
 100 EAST STATE PARKWAY
 SCHAUMBURG, ILLINOIS 60173

AUBURN MANOR
 NAPERVILLE, ILLINOIS
LANDSCAPE PLAN

1	10.25.17
REVISIONS	

DATE 9.05.17
 PROJECT NO. DR1712
 DRAWN MGM
 CHECKED JCT
 SHEET NO.





GARY R. WEBER
ASSOCIATES, INC.
LAND PLANNING
ECOLOGICAL CONSULTING
LANDSCAPE ARCHITECTURE
212 SOUTH MAIN STREET
WHEATON, ILLINOIS 60187
PHONE: 630-668-7197

CLIENT
D.R. HORTON
America's Builder
750 E. BUNKER COURT, SUITE 500
VERNON HILLS, ILLINOIS 60061
CIVIL ENGINEER
HAEGER ENGINEERING
100 EAST STATE PARKWAY
SCHAUMBURG, ILLINOIS 60173

AUBURN MANOR
NAPERVILLE, ILLINOIS
LANDSCAPE PLAN

1 10.25.17
REVISIONS

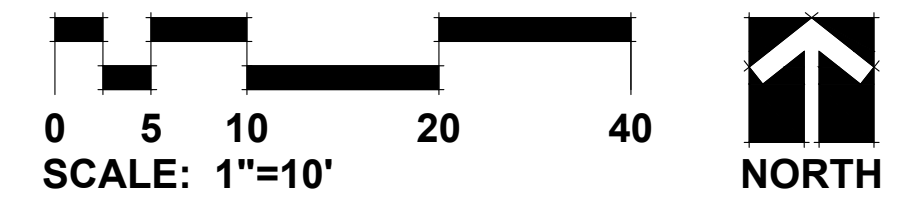
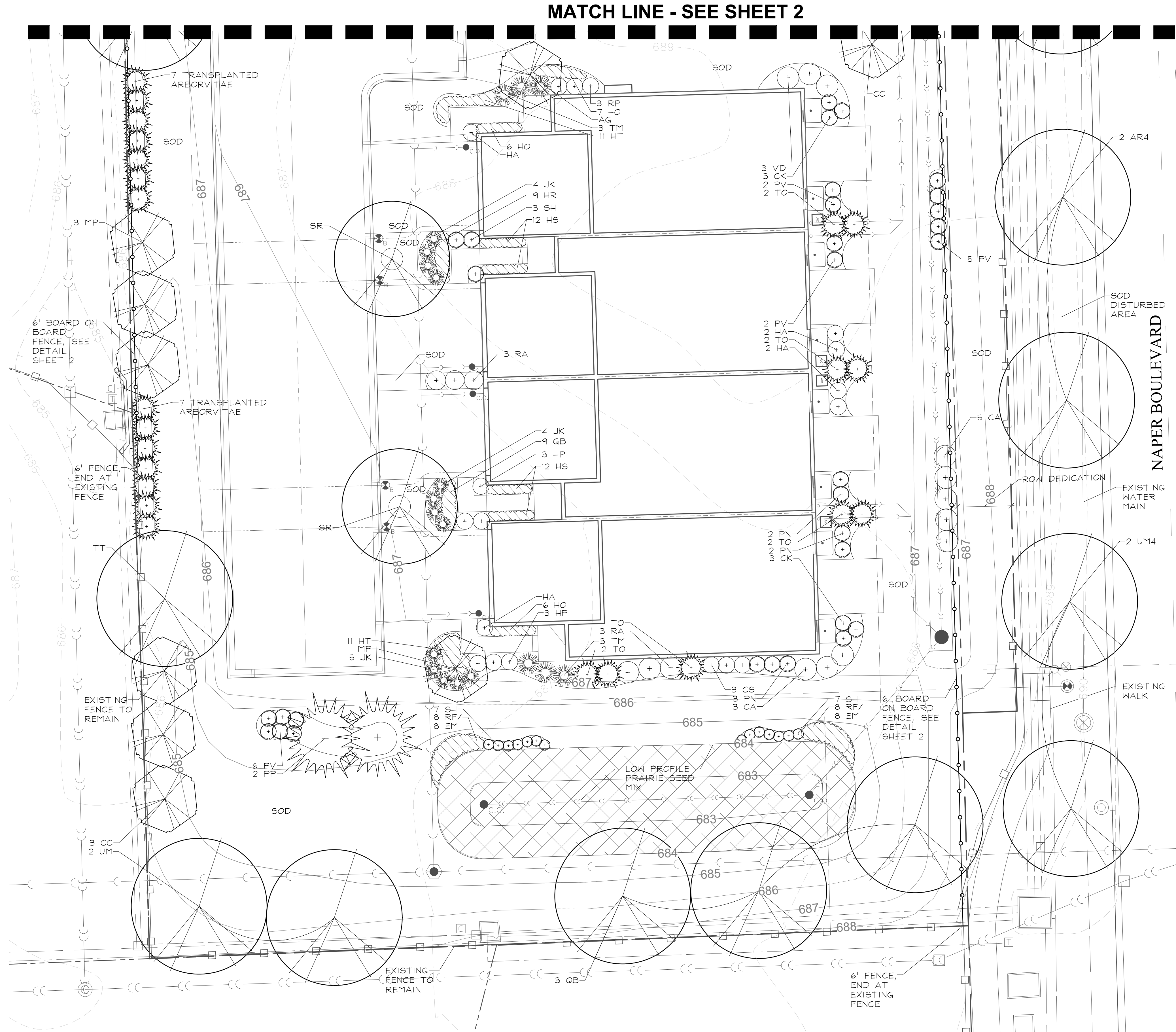
DATE 9.05.17
PROJECT NO. DR1712
DRAWN MGM
CHECKED JCT
SHEET NO.



CITY PROJECT NUMBER: #17-10000101

NATURALIZED AREA PLANTINGS

Key	Description	PLUGS
	LOW PROFILE PRAIRIE SEED MIX - .035 AC.	
A. Low Profile Prairie With Flowers Plug Mixture		
Botanical Name	Common Name	PLUGS
Grasses		
Sporobolus heterolepis	Prairie Dropseed	205
Total Grasses:		205
Wildflowers/Broadleaves		
Allium cernuum	Nodding Wild Onion	30
Asclepias tuberosa	Butterflyweed	30
Coreopsis palmata	Prairie Coreopsis	30
Echinacea pallida	Pale Purple Coneflower	30
Echinacea purpurea	Purple Coneflower	30
Liatris aspera	Rough Blazing Star	30
Liatris pycnostachya	Prairie Blazing Star	30
Monarda fistulosa	Prairie Bergamont	30
Ratibida pinnata	Yellow Coneflower	30
Rudbeckia fulgida var. sullivantii	Showy Black-Eyed Susan	30
Rudbeckia hirta	Black-Eyed Susan	30
Rudbeckia subtomentosa	Sweet Black-Eyed Susan	30
Symphotrichum laeve	Smooth Blue Aster	30
Total Wildflowers/Broadleaves:		390



DATE PLOTTED: 10/25/17

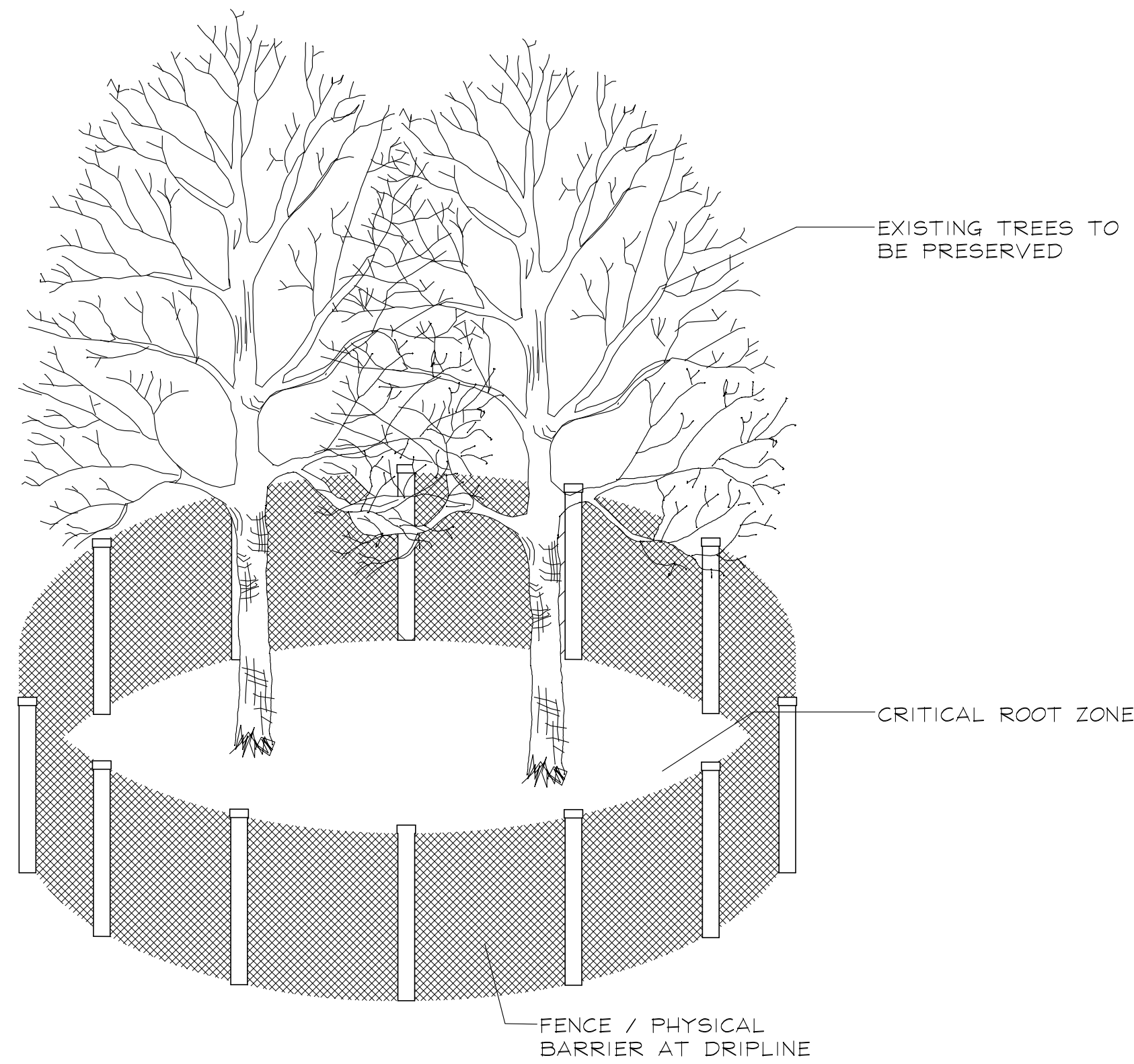
EXISTING TREE INVENTORY

Tree No.	Size (cal.)	Common Name	Cond	Notes	Proposed Action
1	15"	Colorado Spruce	Dead	lying on ground	Remove
2	18"	Colorado Spruce	Good		Remove
3	Multi 12", 14"	Flowering Crabapple	Poor	diseased	Remove
4	17"	Thornless Honeylocust	Good	parkway tree	Preserve
5	15"	Thornless Honeylocust	Good	parkway tree	Remove
6	17"	Thornless Honeylocust	Good	parkway tree	Remove
7	10"	Common Mulberry	Poor	undesireable tree -litter / short lived	Remove
8	Multi 5", 7"	Common Mulberry	Poor	undesireable tree -litter / short lived	Remove
9	6"	Common Mulberry	Poor	undesireable tree -litter / short lived	Remove
10	Multi 4", 4", 5"	Common Mulberry	Poor	undesireable tree -litter / short lived	Remove
11	Multi 3", 4"	Boxelder	Poor	undesireable tree -invasive	Remove
12	Multi 23", 23"	Thornless Honeylocust	Good		Remove
13	10"	Common Mulberry	Poor	undesireable tree -litter / short lived	Remove
14	14"	Colorado Spruce	Dead		Remove
15	11"	Colorado Spruce	Dead		Remove
16	Multi 20", 20"	Silver Maple	Fair	undesireable tree -litter	Remove
17	17"	Colorado Spruce	Dead	90% dead	Remove
18	24"	Sugar Maple	Fair		Remove
19	19"	Sugar Maple	Fair		Remove
20	24"	Colorado Spruce	Fair		Remove
21	20"	Colorado Spruce	Fair-Poor		Remove
22	20"	Norway Spruce	Poor		Remove
23	28"	Silver Maple	Fair	undesireable tree -litter	Remove
24	18"	Norway Spruce	Fair		Remove
25	13"	Common Mulberry	Poor	undesireable tree -litter / short lived	Remove
26	36"	Silver Maple	Fair	undesireable tree -litter	Remove
27	48"	Silver Maple	Fair	undesireable tree -litter	Remove
28	26"	Silver Maple	Fair	undesireable tree -litter	Remove
29	11"	Common Mulberry	Poor	undesireable tree -litter / short lived	Remove
30	6"	Apple -Fruit Tree	Fair-Poor		Remove
31	6"	Apple -Fruit Tree	Fair-Poor		Remove
32	10"	Apple -Fruit Tree	Fair-Poor		Remove
33	6"	Apple -Fruit Tree	Fair-Poor		Remove
34	7"	Black Cherry	Dead		Remove
35	8"	Apple -Fruit Tree	Fair-Poor		Remove
36	7"	Apple -Fruit Tree	Fair-Poor		Remove
37	7"	Apple -Fruit Tree	Fair-Poor		Remove
38	9"	Common Mulberry	Poor	undesireable tree -litter / short lived	Remove
39	8"	Pear -Fruit Tree	Fair-Poor		Remove
40	Multi 6", 6"	Common Mulberry	Poor	undesireable tree -litter / short lived	Remove
41	Multi 8", 8"	Common Mulberry	Poor	undesireable tree -litter / short lived	Remove
42	15"	White Pine	Good		Remove
43	33"	Silver Maple	Fair	undesireable tree -litter	Remove
44	30"	Green Ash	Dead		Remove
45	18"	Norway Spruce	Fair		Remove
46	18"	Norway Spruce	Fair		Remove
47	24"	Sugar Maple	Poor	1/2 dead / storm damage	Remove
48	20"	Colorado Spruce	Good		Remove
49	8"	Common Mulberry	Poor	undesireable tree -litter / short lived	Remove

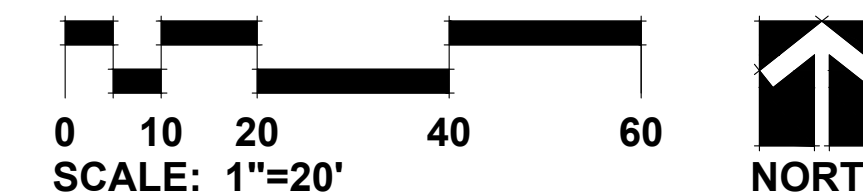
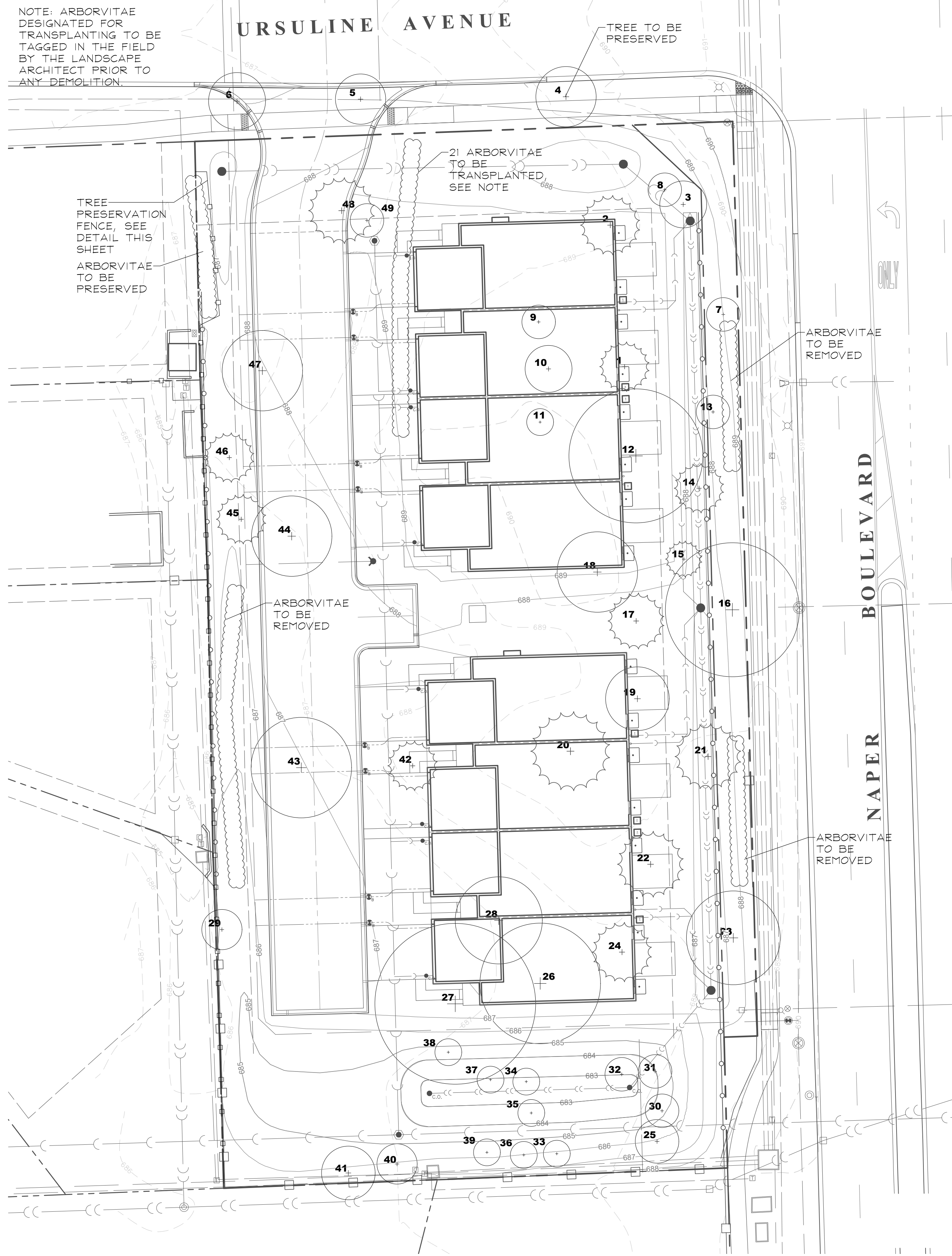
NOTE: TREES TAGGED AND INVENTORIED BY HAEGER ENGINEERING

TREE PRESERVATION NOTES

- 48" high snow fence or wood barriers shall extend to the dripline of the tree or tree mass whenever possible, shall be installed before construction begins, and should not be removed until the completion of construction.
- All accidental damage to existing trees that are to be preserved shall be promptly treated as required in accordance with recognized horticultural practices and the instructions of the professional Arborist, Landscape Architect or Horticulturist.
- Broken or badly bruised branches shall be removed with a clean cut. If recommended by the professional Arborist, Landscape Architect or Horticulturist.
- Care shall be exercised by the contractors to protect all overhead limbs and branches from damage by contact with material, machinery or equipment and by damage from engine exhaust.
- Contractors shall protect trees and vegetation against spills or discharge of fuels, lubricating oils, hydraulic fluids, anti-freeze and coolants, calcium chloride, lime and all other similar hydrocarbons, organic chemicals, and other materials which can be harmful.
- When underground utilities are proposed within 5' of a preserved tree trunk, they must be augered if possible.



TREE PRESERVATION FENCE DETAIL



GRWA
GARY R. WEBER ASSOCIATES, INC.
 LAND PLANNING
 ECOLOGICAL CONSULTING
 LANDSCAPE ARCHITECTURE
 212 SOUTH MAIN STREET
 WHEATON, ILLINOIS 60187
 PHONE: 630-668-7197

CLIENT
D.R. HORTON
America's Builder
 750 E. BUNKER COURT, SUITE 500
 VERNON HILLS, ILLINOIS 60061
 CIVIL ENGINEER
HAEGER ENGINEERING
 100 EAST STATE PARKWAY
 SCHAUMBURG, ILLINOIS 60173

AUBURN MANOR

NAPERVILLE, ILLINOIS

TREE PRESERVATION PLAN

1 10.25.17
 REVISIONS

DATE 9.05.17
 PROJECT NO. DR1712
 DRAWN MGM
 CHECKED JCT
 SHEET NO.



CITY PROJECT NUMBER: #17-10000101