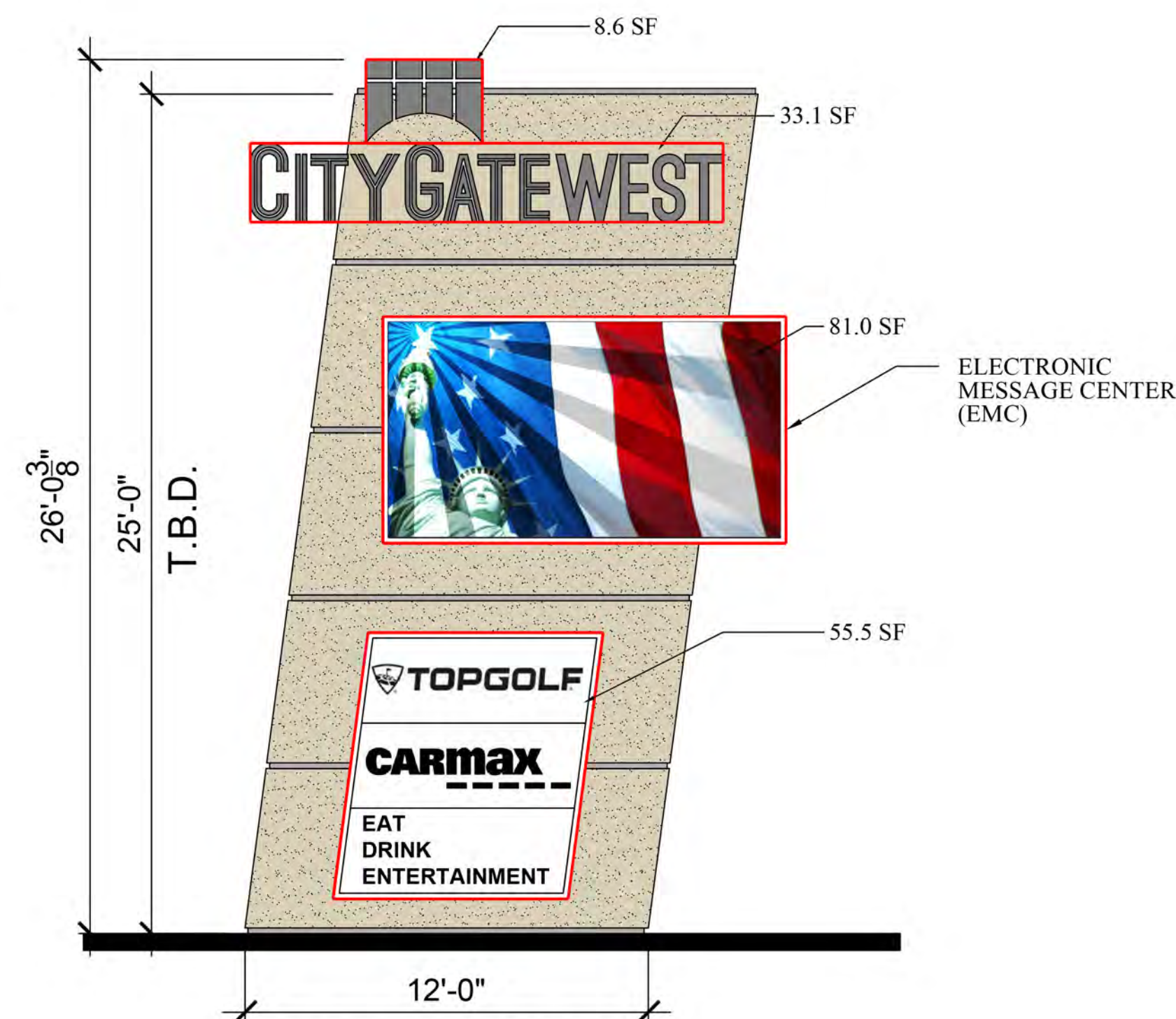
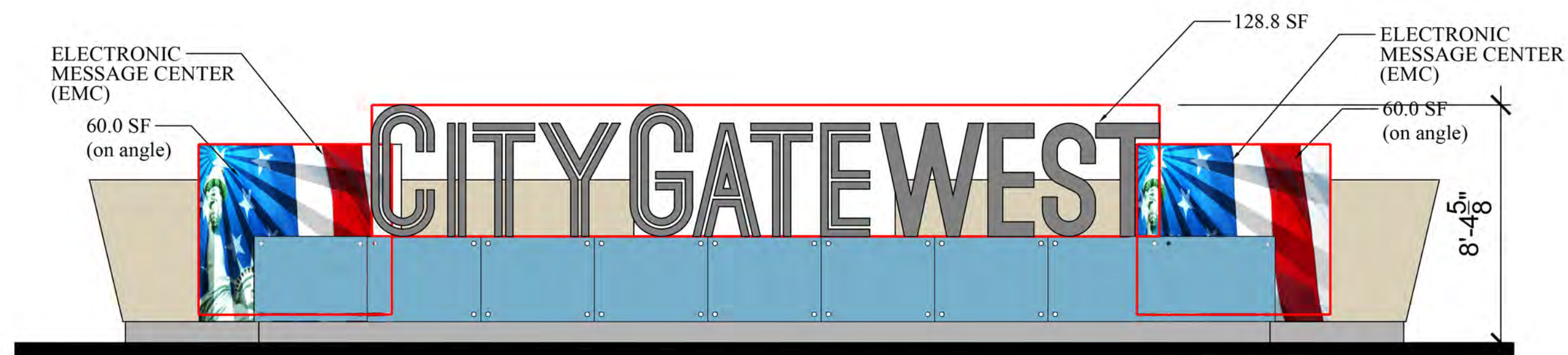


1 CITYGATE WEST TOLLWAY SIGN (WEST SIDE)  
SCALE: 1/4" = 1'-0"



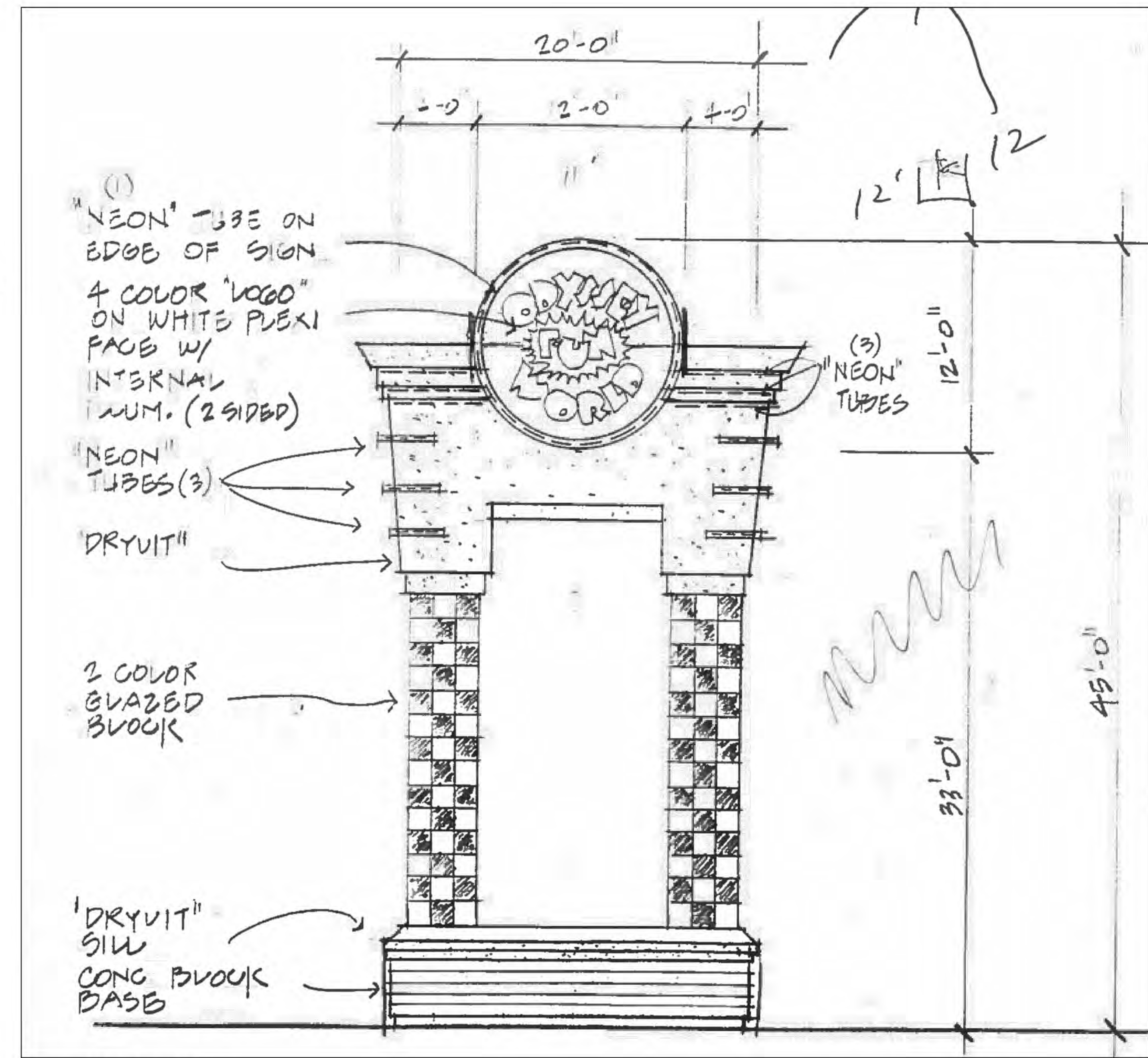
2 CITYGATE WEST DEVELOPMENT SIGN (WEST)  
SCALE: 1/4" = 1'-0"



3 CITYGATE WEST MONUMENT SIGN (RTE. 59 & FERRY ROAD - WEST SIDE)  
SCALE: 1/4" = 1'-0"

**SIGN AREA**

<b>(1) TOLLWAY SIGN</b>	
11.7	SF
45.0	SF
180.0	SF
<b>TOTAL</b>	<b>236.7</b>
<b>(2) DEVELOPMENT SIGN</b>	
8.6	SF
33.1	SF
81.0	SF
55.5	SF
<b>TOTAL</b>	<b>178.2</b>
<b>(3) MONUMENT SIGN</b>	
128.8	SF
60.0	SF
60.0	SF
<b>TOTAL</b>	<b>248.8</b>



4 EXISTING FUN WORLD SIGN  
SCALE: NTS

REVISIONS:	
NO.	DATE

CITYGATE NAPERVILLE  
S.W. CORNER OF U.S. RTE. 59 & FERRY ROAD  
NAPERVILLE, ILLINOIS

**TECH METRA LTD**  
ARCHITECTURE □ ENGINEERING □ CONSTRUCTION MANAGEMENT □ INTERIOR DESIGN  
2221 CAMDEN COURT □ OAK BROOK, IL 60523 □ (630) 560-8100 □ FAX (630) 560-8101

JOB:  
DATE: 1-14-2021  
SCALE: AS NOTED  
SHEET:  
**A-2**

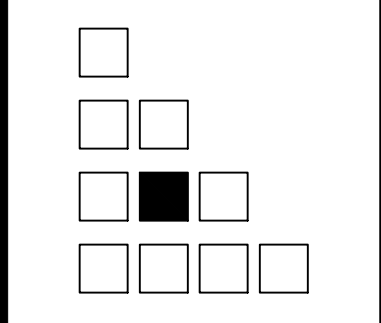
**DEVELOPMENT IDENTITY / SIGNAGE PROGRAM**

REVISIONS:

NO. DATE:

CITYGATE NAPERVILLE  
S.W. CORNER OF U.S. RTE. 59 & FERRY ROAD  
NAPERVILLE, ILLINOIS

TECH METRA LTD  
ARCHITECTURE  ENGINEERING  CONSTRUCTION MANAGEMENT  INTERIOR DESIGN  
2221 CAMDEN COURT OAK BROOK, IL 60523  (630)560-8100  FAX (630)560-8101



JOB:  
DATE: 1-14-2021  
SCALE: AS NOTED  
SHEET:

A-3

Filename: G:\Odyssey West\CityGate Naperville - Signage Program\CityGate-Signage-Bridge-Elevations.dwg May 30, 2017 - 11:10:09 - 001 -



LED panel area = 800 sf

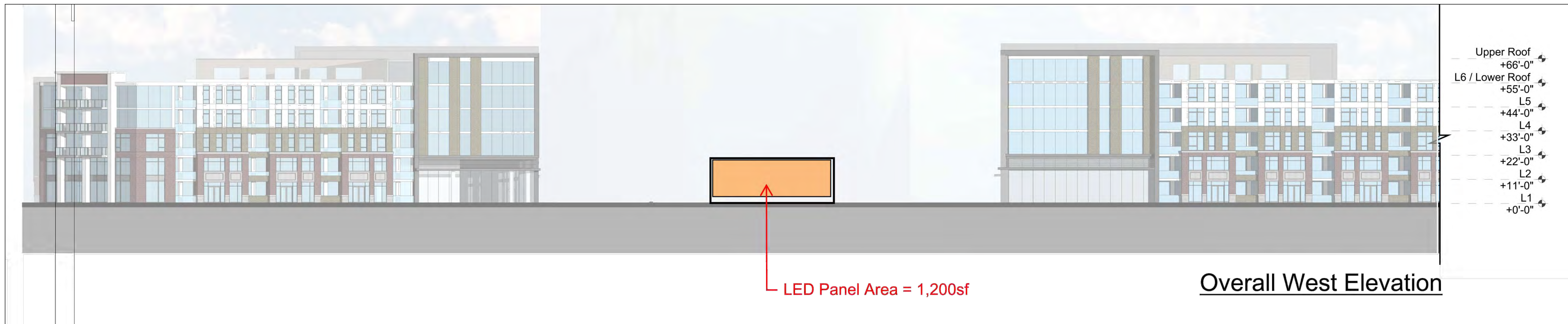
South Residential Building - North Elevation



LED panel area = 800 sf

North Residential Building - South Elevation

DEVELOPMENT IDENTITY / SIGNAGE PROGRAM

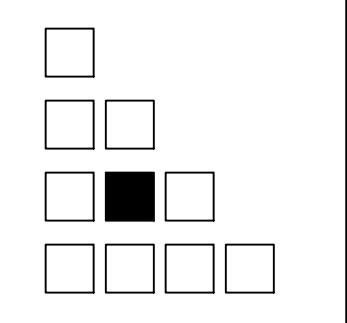


**DEVELOPMENT IDENTITY / SIGNAGE PROGRAM**

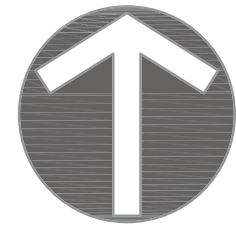
NO.	DATE:	REVISIONS:

**CITYGATE NAPERVILLE**  
 S.W. CORNER OF U.S. RTE. 59 & FERRY ROAD  
 NAPERVILLE, ILLINOIS

**TECH METRA LTD**  
 ARCHITECTURE  ENGINEERING  CONSTRUCTION MANAGEMENT  INTERIOR DESIGN  
 2221 CAMDEN COURT OAK BROOK, IL 60523  (630)560-8100  FAX (630)560-8101



JOB: \_\_\_\_\_  
 DATE: 1-14-2021  
 SCALE: AS NOTED  
 SHEET: **A-4**



NORTH

BASIS OF BEARING:  
ILLINOIS STATE PLANE - EAST ZONE

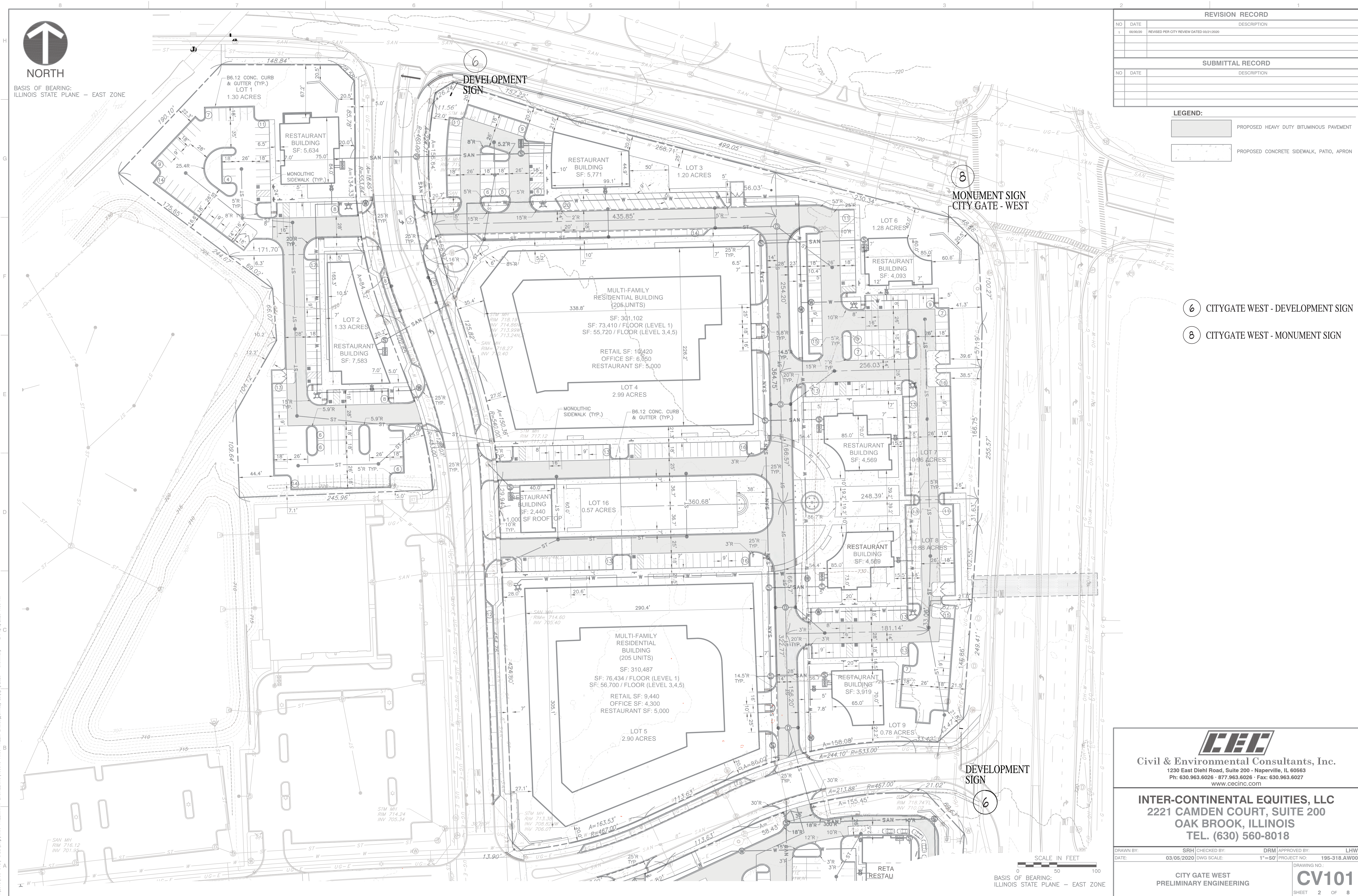
REVISION RECORD		
NO	DATE	DESCRIPTION
1	00/00/00	REVISED PER CITY REVIEW DATED 03/21/2020

SUBMITTAL RECORD		
NO	DATE	DESCRIPTION

**LEGEND:**

	PROPOSED HEAVY DUTY BITUMINOUS PAVEMENT
	PROPOSED CONCRETE SIDEWALK, PATIO, APRON



- ⑥ CITYGATE WEST - DEVELOPMENT SIGN
- ⑧ CITYGATE WEST - MONUMENT SIGN

**CEC**  
**Civil & Environmental Consultants, Inc.**  
 1230 East Dahl Road, Suite 200 - Naperville, IL 60563  
 Ph: 630.963.6026 · 877.963.6026 · Fax: 630.963.6027  
 www.cecinc.com

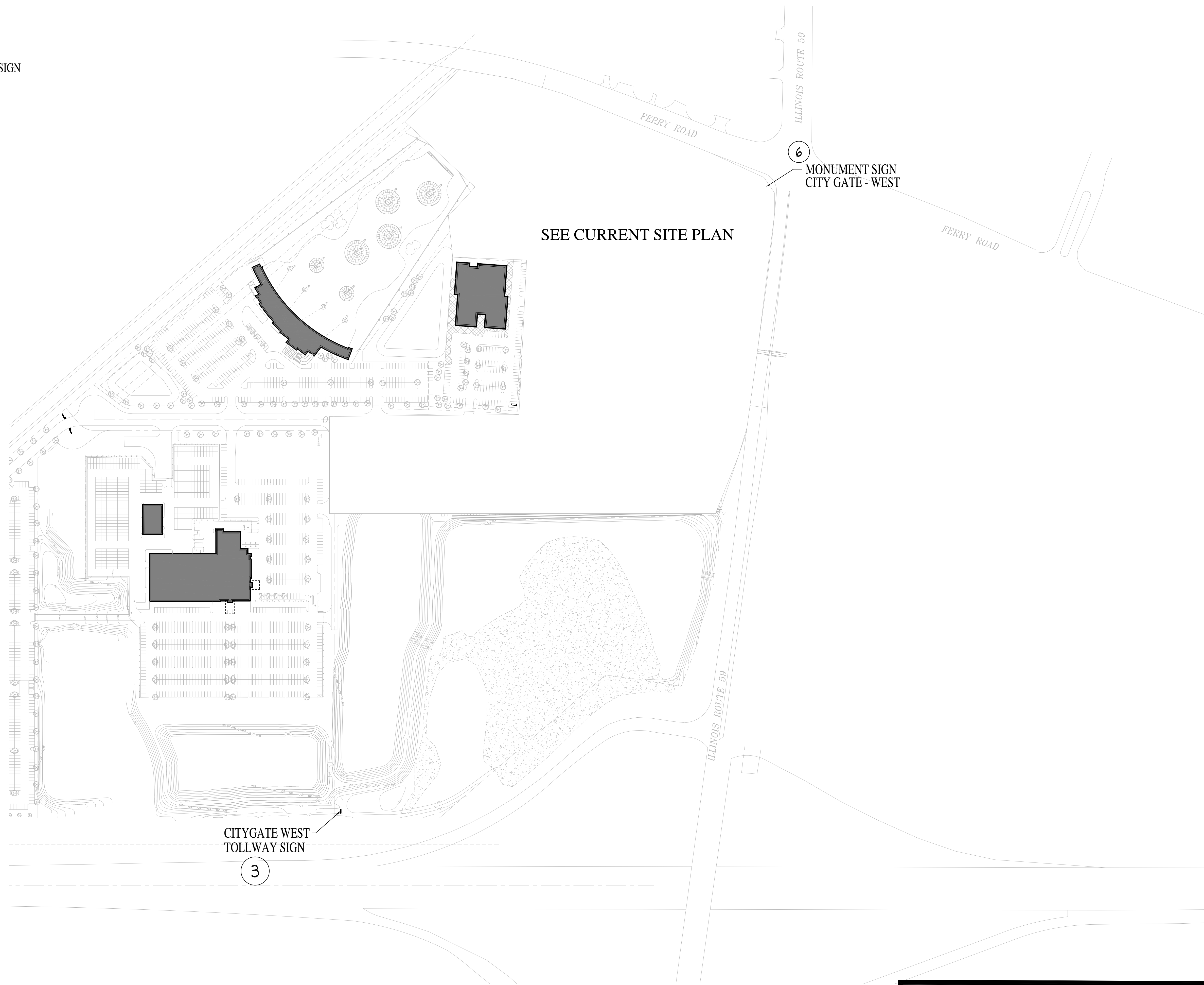
**INTER-CONTINENTAL EQUITIES, LLC**  
 2221 CAMDEN COURT, SUITE 200  
 OAK BROOK, ILLINOIS  
 TEL. (630) 560-8018

DRAWN BY:	SRH	CHECKED BY:	DRM	APPROVED BY:	LHW
DATE:	03/05/2020	DWG SCALE:	1"=50'	PROJECT NO:	195-318.AW00
CITY GATE WEST PRELIMINARY ENGINEERING				DRAWING NO.:	<b>CV101</b>
				SHEET	2 OF 8



P:\2019\195-318-CDD\DWG\MPD-PRELIM\ENGINEERING\195318-MPD-PRELIM\_ENG.dwg (1/21/2020 - 4:06:00 PM) - LP: 5/6/2020 7:03 AM

- ③ CITYGATE WEST - TOLLWAY SIGN
- ⑥ CITYGATE WEST - DEVELOPMENT SIGN



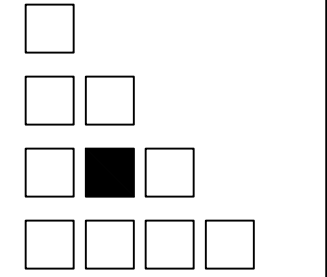
ENLARGED SITE PLAN  
SCALE: N.T.S.

DEVELOPMENT IDENTITY / SIGNAGE PROGRAM

NO.	DATE:	REVISIONS:

**CITYGATE NAPERVILLE**  
S.W. CORNER OF U.S. RTE. 59 & FERRY ROAD  
NAPERVILLE, ILLINOIS

**TECH METRA LTD**  
ARCHITECTURE  ENGINEERING  CONSTRUCTION MANAGEMENT  INTERIOR DESIGN  
2221 CAMDEN COURT  OAK BROOK, IL 60523  (630)560-8100  FAX (630)560-8101



JOB: \_\_\_\_\_  
DATE: 10-02-17  
SCALE: N.T.S.  
SHEET: **SP-2**