

ZONING EXHIBIT FOR WAGNER FARMS

PART OF THE SOUTHWEST QUARTER OF SECTION 10, TOWNSHIP 37 NORTH,
RANGE 9 EAST OF THE THIRD PRINCIPAL MERIDIAN, IN WILL COUNTY, ILLINOIS.

N. QUARTER
CORNER OF SECTION
10-37-9
AS ESTABLISHED PER
DATA ON R96-057627

PARCEL INDEX NUMBER
07-01-10-300-002
07-01-10-300-023
07-01-10-300-029
NAPERVILLE, ILLINOIS



150 75 0 150
SCALE: 1" = 150'

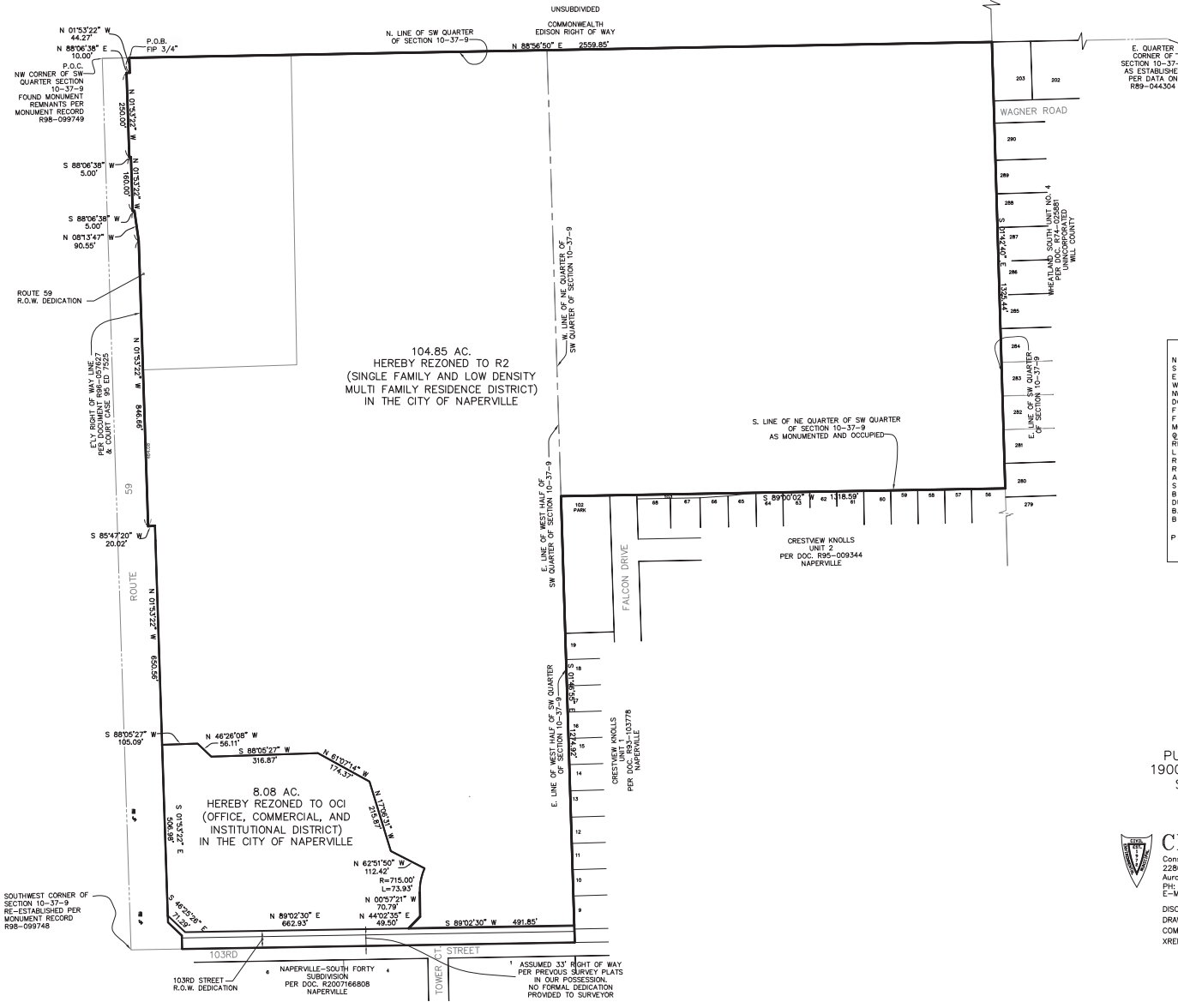


LOCATION MAP

BENCHMARKS/CONTROL POINTS

- ELEVATION REFERENCE MARKS**
- RM1-NAPERVILLE SURVEY MON. #1503. BERNSTEN 3D TOP SECURITY MONUMENT. CONSISTING OF A 9/16" DIA. STAINLESS STEEL DATUM POINT ON THREADED 9/16" X 4" LONG ROD TOTALING 181" IN LENGTH WITH GREASED TOP SECURITY SLEEVE ENCLOSED IN SAND AND 6" PVC PIPE WITH BMAC 6 ALUMINUM ACCESS COVER. ELEVATION=670.06 (NAVD 88)
 - RM2-NAPERVILLE SURVEY MON. #1002. BERNSTEN 3D TOP SECURITY MONUMENT. CONSISTING OF A 9/16" DIA. STAINLESS STEEL DATUM POINT ON THREADED 9/16" X 4" LONG ROD TOTALING 124" IN LENGTH WITH GREASED TOP SECURITY SLEEVE ENCLOSED IN SAND AND 6" PVC PIPE WITH BMAC 6 ALUMINUM ACCESS COVER. ELEVATION=667.49 (NAVD 88)
- (HELD ABOVE BENCHMARKS AS THE BASIS OF VERTICAL DATUM FOR PROJECT)
- CP 102 - CROSS CUT IN TOP OF CURB ADJACENT TO FIRE HYDRANT AT END OF FALCON DRIVE ON WEST SIDE OF ROAD. ELEV: 664.395 NAVD 88
 - CP 113 - CUT CROSS IN CENTERLINE HEADWALL OF TRIPLE 21" RCP AT THE NORTHEAST CORNER OF ROUTE 59 & 103RD STREET. ELEV: 668.19 NAVD88
 - CP 104 - CUT CROSS IN CENTERLINE OF THE END OF THE CONCRETE WALK AT SOUTHEAST CORNER OF SITE. ELEV: 668.25 NAVD88

LINE LEGEND	
	SUBDIVISION BOUNDARY LINE (Heavy Solid Line)
	LOT LINE/PROPERTY LINE (Solid Line)
	EXISTING CORPORATE LIMITS OF THE CITY OF NAPERVILLE (Heavy Dashed Line)
	BUILDING LINE (Long Dashed Lines)
	EASEMENT LINE/LIMITS OF EASEMENT (Short Dashed Lines)
	CENTERLINE (Single Dashed Lines)
	QUARTER SECTION LINE (Double Dashed Lines)
	SECTION LINE (Triple Dashed Lines)
	APPROX. SCALED LIMITS OF ZONE A AS SHOWN ON WILL COUNTY FIRM.



ABBREVIATIONS

N.	- NORTH
S.	- SOUTH
E.	- EAST
W.	- WEST
NW.	- NORTHWEST
DOC.	- DOCUMENT
F.I.P.	- FOUND IRON PIPE
F.I.R.	- FOUND IRON ROD
MON.	- MONUMENT
Q.	- ON LINE
REC.	- RECORD
R.	- RADIUS
R.O.W.	- RIGHT OF WAY
Ac.	- ACRE
S.F.	- SQUARE FEET
B.S.L.	- BUILDING SETBACK LINE
DU/AC	- DWELLING UNITS PER ACRE
B/C	- BACK OF CURB
B-B	- BACK TO BACK

P.U. & D.E. - INDICATES PUBLIC UTILITIES AND DRAINAGE EASEMENT

PREPARED FOR:
PULTE HOME COMPANY, LLC
1900 E. GOLF ROAD, SUITE 300
SCHAUMBURG, IL 60173
(847) 230-5400

PREPARED BY:

CEMCON, Ltd.
Consulting Engineers, Land Surveyors & Planners
2280 White Oak Circle, Suite 100
Aurora, Illinois 60502-9875
PH: 630.862.2100 FAX: 630.862.2199
E-Mail: ccs99@cemcon.com Website: www.cemcon.com

DISC NO.: 402109 FILE NAME: ZONING EXHIBIT
DRAWN BY: KMS FLD. BK / PD. NO.: -----
COMPLETION DATE: 01-29-19 JOB NO.: 402.109
XREF: TOPO PROJECT MANAGER: CRM