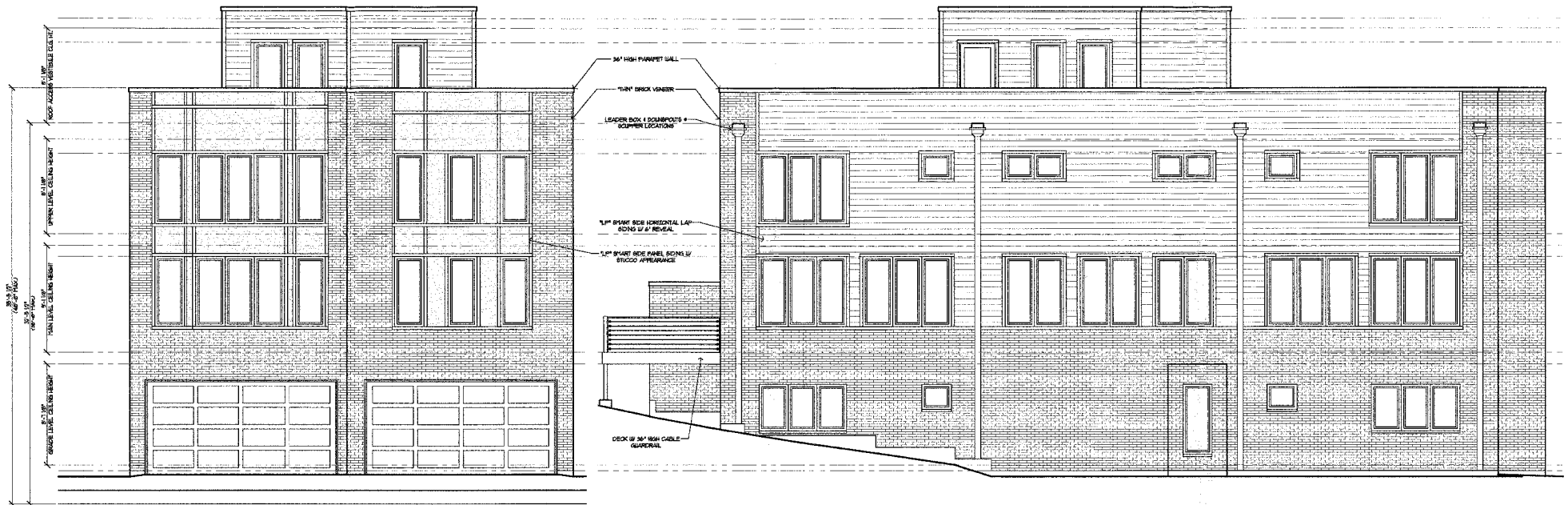


DOWD RESIDENCE

SCHEME #3

125 N. HUFFMAN STREET
NAPERVILLE, ILLINOIS

FEBRUARY 8, 2019



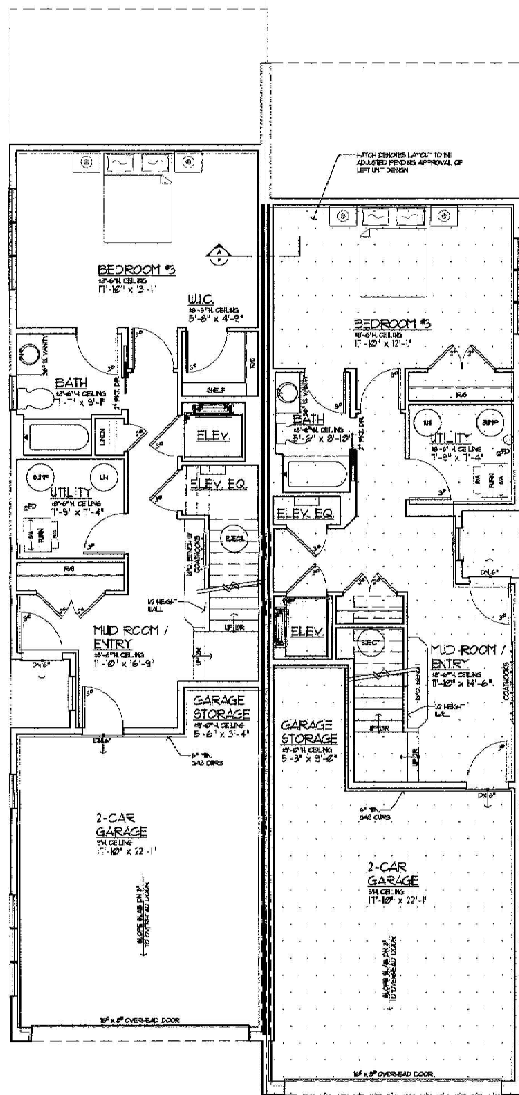
FRONT ELEVATION

SCALE: 1/4"=1'-0"

LEFT SIDE ELEVATION

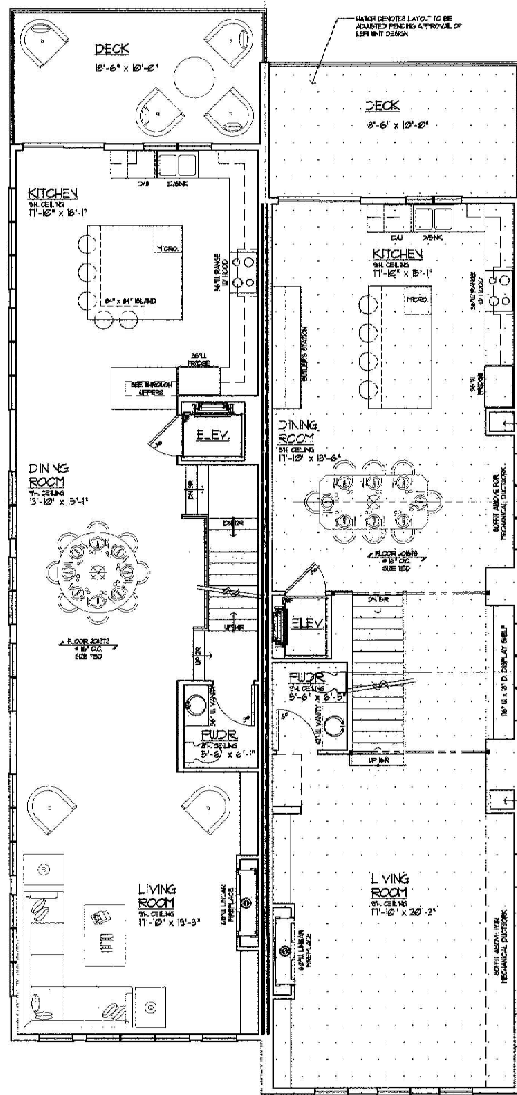
SCALE: 1/4"=1'-0"





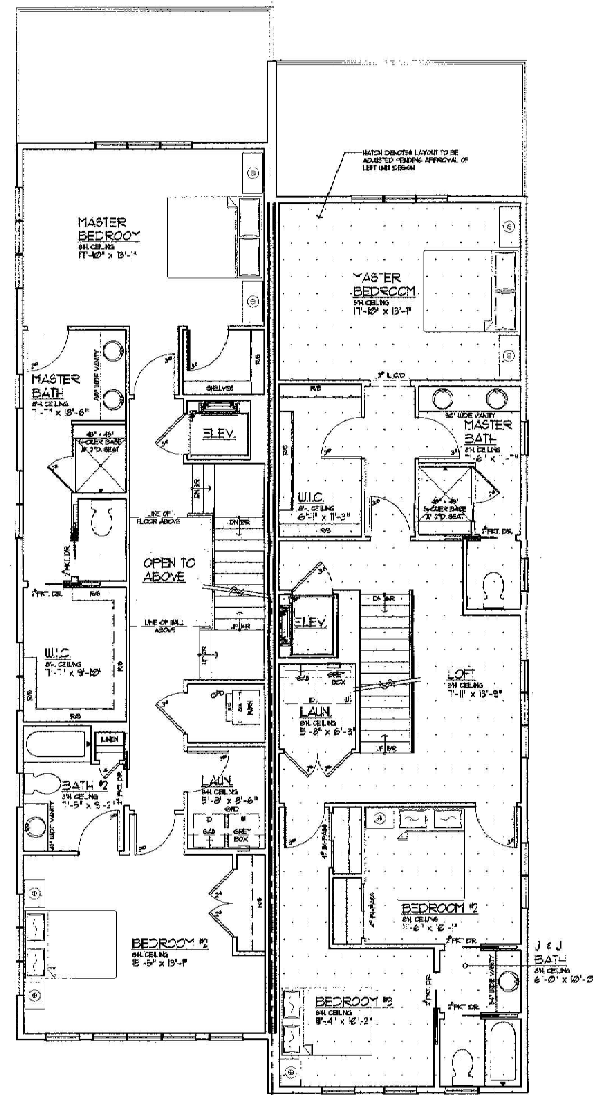
BASEMENT / GRADE LEVEL
SCALE 1/4" = 1'-0"

678 SQ. FT. FINISHED AREA (U)
678 SQ. FT. UNFINISHED + STORAGE (U)
1,480 SQ. FT. 2-CAR GARAGE (EACH UNIT)



MAIN LEVEL
SCALE 1/4" = 1'-0"

1078 SQ. FT. FINISHED AREA (U)
105 SQ. FT. OPEN REAR DECK (EACH U. A. T.)



UPPER LEVEL
SCALE 1/4" = 1'-0"

271 SQ. FT. FINISHED AREA (U)
89 SQ. FT. BL. CONT. (EACH UNIT)



DOWN RESIDENCE

SCHEME #3

125 N. HUFFMAN STREET
NAPERVILLE, ILLINOIS

FEBRUARY 8, 2018

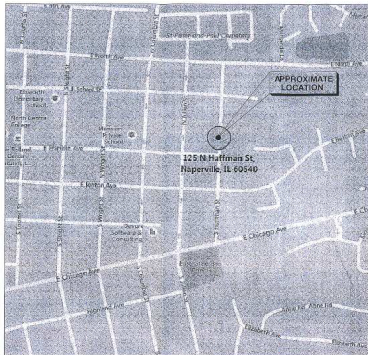
STEVE CARR
BUILDERS
NAPERVILLE, ILLINOIS

Boundary and Topographic Survey

LEGAL DESCRIPTION:
 LOT 6 IN BLOCK IN BELCARA HEIGHTS, IN SECTION 18, TOWNSHIP 38 NORTH, RANGE 10, EAST OF THE
 THIRD PRINCIPAL MERIDIAN, IN DUPAGE COUNTY, ILLINOIS.
 COMMONLY KNOWN AS 126 N. HUFFMAN STREET, NAPERVILLE, ILLINOIS.

LINE TYPE LEGEND

BUILDING SETBACK =	---
COMBINED SEWER =	---CMD---CMD---
DEPRESSED CURB =	---
EASEMENT =	---
ELECTRIC LINE =	---
FENCE =	---
FIBER OPTIC CABLE =	---
GAS LINE =	---
GUARD RAIL =	---
CENTERLINE OF OVERHEAD WIRES =	---
SANITARY SEWER =	---
STORM SEWER =	---
TREE OR BRUSH LINE =	---
WATER LINE =	---



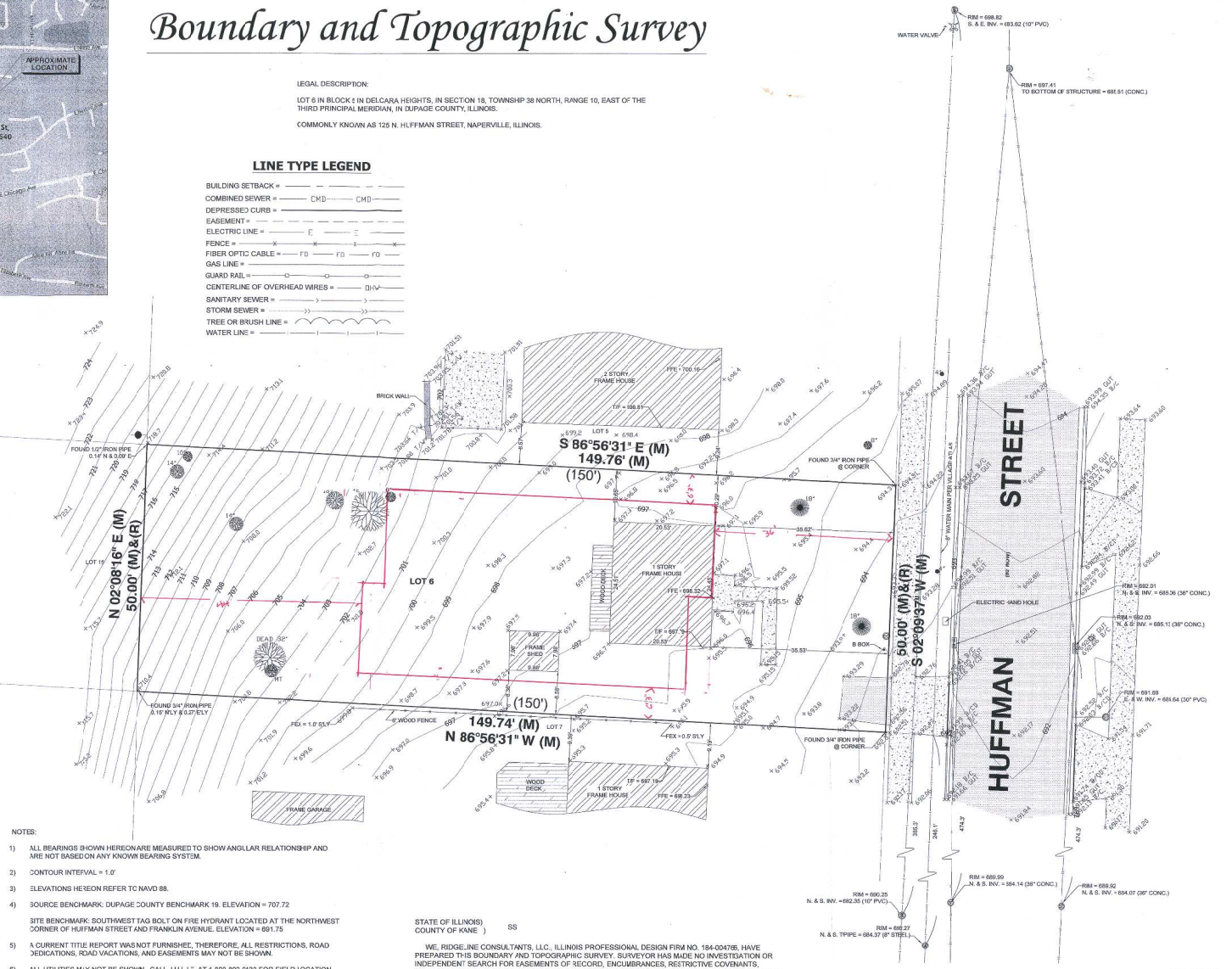
Vicinity Map
(No Scale)

SYMBOL LEGEND

	= ASPHALT
	= A/C UNIT
	= BASKETBALL HOOP
	= BRICK
	= CABLE TV PEDESTAL
	= CATCH BASIN
	= CLEANOUT
	= COMBINED STORM & SANITARY MANHOLE
	= CONCRETE
	= DECIDUOUS TREE
	= DOWNSPOUT
	= ELECTRIC MANHOLE
	= ELECTRIC PEDESTAL
	= ELECTRIC TRANSFORMER
	= FIBER OPTIC PEDESTAL
	= FLAG POLE
	= FOUND CUT CROSS
	= FOUND MONUMENT
	= GAS MANHOLE
	= GRAVEL
	= HYDRANT
	= LIGHT
	= MAIL BOX
	= PINE TREE
	= PAY PHONE
	= SANITARY MANHOLE
	= SET IRON PIPE 12" DIA X 24"
	= SIGN
	= STORM MANHOLE
	= SQUARE CURB DRAIN
	= SWITCH CABINET
	= TELEPHONE MANHOLE
	= TELEPHONE NETWORK INTERFACE
	= TELEPHONE PEDESTAL
	= TRAFFIC LIGHT
	= TRAFFIC MANHOLE
	= UNKNOWN MANHOLE
	= WATER MANHOLE
	= WATER SPIGOT
	= WATER VALVE
	= WOOD
	= WOOD POWER POLE

ABBREVIATION LEGEND

A	= ASPHALT
ADA	= AMERICANS WITH DISABILITY ACT
B/B	= BOTTOM OF ANCHOR BOLT
B/BSS	= BOTTOM OF BUSS
BC	= BACK OF CURB
BCD	= BACK OF DEPRESSED CURB
BSL	= BUILDING SETBACK LINE
BWL	= BOTTOM OF WALL ELEVATION
ILC	= BUILDING CORNER
C	= CONCRETE
C.E.	= CITY EASEMENT
CHD	= CHORD
C.L.	= CENTERLINE
CMF	= CORRUGATED METAL PIPE
CP	= CORRUGATED PLASTIC PIPE
CW	= CONCRETE WALK
(D)	= DEED
DIP	= DUCTILE IRON PIPE
E	= EAST
EB	= EDGE OF BRICK
EC	= EDGE OF CONCRETE
EG	= EDGE OF GRAVEL
ELY	= EASTERLY
EP	= EDGE OF PAVEMENT
EW	= EDGE OF WATER
FES	= FLARED END SECTION
TEX	= FENCE CORNER
FEE	= FINISHED FLOOR ELEVATION
F.I.P.	= FOUND IRON PIPE
F.I.R.	= FOUND IRON ROD
FPK	= FOUND P.C. NAIL
G	= GROUND
GUT	= GUTTER
CV	= IRRIGATION CONTROL VALVE
(M)	= MEASURED DISTANCE
MW	= MONITORING WELL
MT	= MULTI TRUNK
N	= NORTH
N.L.Y.	= NORTHERLY
P.O.B.	= POINT OF BEGINNING
P.O.C.	= POINT OF COMMENCEMENT
PVC	= POLYVINYL CHLORIDE (PLASTIC PIPE)
P.U.E.	= PUBLIC UTILITY EASEMENT
P.U. & D.E.	= PUBLIC UTILITY & DRAINAGE EASEMENT
(R)	= RECORD DISTANCE
RAD	= RADIUS
RCP	= ROUND CONCRETE PIPE
R.L.W.	= RIGHT OF WAY
S	= SOUTH
S.L.Y.	= SOUTHERLY
T/B	= TOP OF ANCHOR BOLT
T/BSS	= TOP OF BUSS
TC	= TOP OF CONCRETE
TF	= TOP OF FOUNDATION ELEVATION
TRP	= TOP OF PIPE
T/W	= TOP OF WALL ELEVATION
T/WW	= TOP OF WINDOW WELL ELEVATION
U&D.E.	= UTILITY & DRAINAGE EASEMENT
W	= WEST
W.L.Y.	= WESTERLY



- NOTES:
- 1) ALL BEARINGS SHOWN HEREON ARE MEASURED TO SHOW ANGULAR RELATIONSHIP AND ARE NOT BASED ON ANY KNOWN BEARING SYSTEM.
 - 2) CONTOUR INTERVAL = 1.0'
 - 3) ELEVATIONS HEREON REFER TO NAVD 83.
 - 4) SOURCE BENCHMARK: DUPAGE COUNTY BENCHMARK 19. ELEVATION = 707.72
 - 5) SITE BENCHMARK: SOUTHWEST TAG BOLT ON FIRE HYDRANT LOCATED AT THE NORTHWEST CORNER OF HUFFMAN STREET AND FRANKLIN AVENUE. ELEVATION = 691.75
 - 6) A CURRENT TITLE REPORT WAS NOT FURNISHED, THEREFORE, ALL RESTRICTIONS, ROAD DEDICATIONS, ROAD VACATIONS, AND EASEMENTS MAY NOT BE SHOWN.
 - 7) ALL UTILITIES MAY NOT BE SHOWN. CALL J.U.L.L.E. AT 1-800-882-0233 FOR FIELD LOCATION OF UNDERGROUND UTILITY LINES PRIOR TO ANY DIGGING OR CONSTRUCTION.
 - 8) THIS PROPERTY MAY BE WITHIN THE CORPORATE LIMITS OF THE CITY OF NAPERVILLE, AND AS SUCH IS SUBJECT TO ZONING AND BUILDING RESTRICTIONS.
 - 9) FIELD WORK COMPLETED ON 6-23-2016.
 - 10) ALL TREES LESS THAN 4 INCHES IN DIAMETER ARE NOT SHOWN HEREON.
 - 11) PARCEL CONTAINS APPROXIMATELY 7487 SQUARE FEET.

STATE OF ILLINOIS)
 COUNTY OF KANE) SS

WE, RIDGELINE CONSULTANTS, LLC, ILLINOIS PROFESSIONAL DESIGN FIRM NO. 184-004786, HAVE PREPARED THIS BOUNDARY AND TOPOGRAPHIC SURVEY. SURVEYOR HAS MADE NO INVESTIGATION OR INDEPENDENT SEARCH FOR EASEMENTS OF RECORD, ENCUMBRANCES, RESTRICTIVE COVENANTS, OWNERSHIP TITLE EVIDENCE, OR ANY OTHER FACTS WHICH AN ACCURATE TITLE SEARCH MAY DISCLOSE. THIS PROFESSIONAL SERVICE CONFORMS TO THE CURRENT ILLINOIS MINIMUM STANDARDS FOR BOUNDARY AND TOPOGRAPHIC SURVEYS.

DATED AT MONTGOMERY, ILLINOIS ON JUNE 2, 2016.

Edward A. Healy



Page 1 of 1	
Rev. No.	Rev. Description
001	Issue
002	Revised
003	Revised
004	Revised
005	Revised
006	Revised
007	Revised
008	Revised
009	Revised
010	Revised
011	Revised
012	Revised
013	Revised
014	Revised
015	Revised
016	Revised
017	Revised
018	Revised
019	Revised
020	Revised
021	Revised
022	Revised
023	Revised
024	Revised
025	Revised
026	Revised
027	Revised
028	Revised
029	Revised
030	Revised
031	Revised
032	Revised
033	Revised
034	Revised
035	Revised
036	Revised
037	Revised
038	Revised
039	Revised
040	Revised
041	Revised
042	Revised
043	Revised
044	Revised
045	Revised
046	Revised
047	Revised
048	Revised
049	Revised
050	Revised
051	Revised
052	Revised
053	Revised
054	Revised
055	Revised
056	Revised
057	Revised
058	Revised
059	Revised
060	Revised
061	Revised
062	Revised
063	Revised
064	Revised
065	Revised
066	Revised
067	Revised
068	Revised
069	Revised
070	Revised
071	Revised
072	Revised
073	Revised
074	Revised
075	Revised
076	Revised
077	Revised
078	Revised
079	Revised
080	Revised
081	Revised
082	Revised
083	Revised
084	Revised
085	Revised
086	Revised
087	Revised
088	Revised
089	Revised
090	Revised
091	Revised
092	Revised
093	Revised
094	Revised
095	Revised
096	Revised
097	Revised
098	Revised
099	Revised
100	Revised

