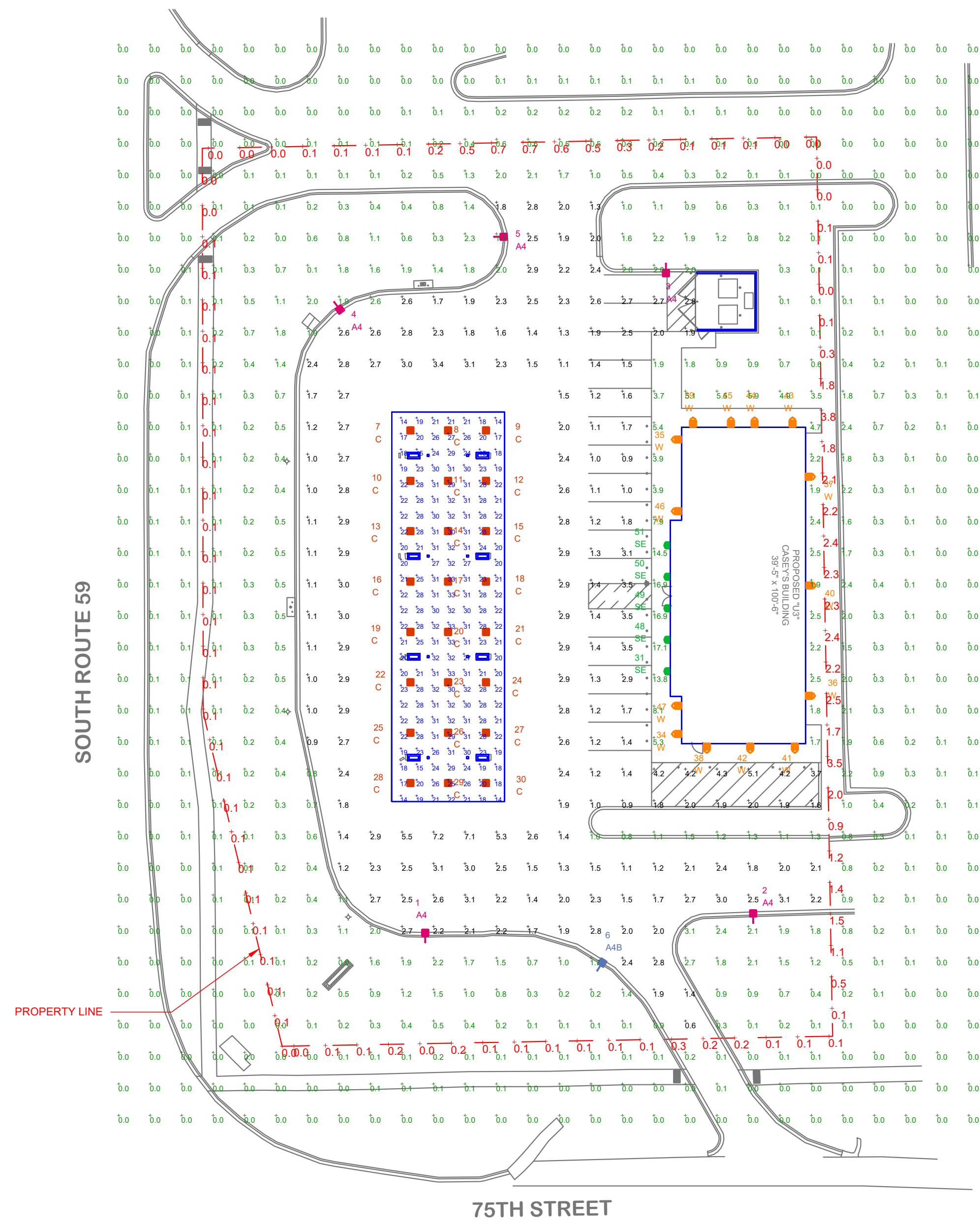


PHOTOMETRIC PLAN PREPARED
FOR CASEY'S STORE #6533
NAPERVILLE, IL



THIS SITE IS LOCATED IN A REGION WHERE LIGHTING IS REGULATED BY LOCAL ORDINANCES

- NOTES:
- ALL AREA LIGHTS ON NEW 15 FT. POLES MOUNTED ON 2 FT. CONCRETE BASES.
 - RED LEONARD ASSOCIATES RECOMMENDS USING THE MANUFACTURER'S VALUES FOR INITIAL LLF IN CASES WHERE LIGHT TRESPASS IS A CONCERN. THESE VALUES ARE DETERMINED VIA PROCEDURES ESTABLISHED IN THE IES TM-21-11 DOCUMENT. LIGHT LEVELS ON THIS PHOTOMETRIC PLAN ARE CALCULATED WITH A LLF=.8 PER THE REQUEST OF OTHERS.
 - THE EXTERIOR LIGHTING DESIGN DEPICTED ON THIS PHOTOMETRIC PLAN COMPLIES WITH THE REQUIREMENTS OF THE NAPERVILLE MUNICIPAL CODE SECTION 6-14-4.3.7.2 AS UNDERSTOOD BY CASEY'S.

LUMINAIRE LOCATION SUMMARY		
LUM NO.	LABEL	MTG. HT.
1	A4	17
2	A4	17
3	A4	17
4	A4	17
5	A4	17
6	A4B	17
7	C	16.5
8	C	16.5
9	C	16.5
10	C	16.5
11	C	16.5
12	C	16.5
13	C	16.5
14	C	16.5
15	C	16.5
16	C	16.5
17	C	16.5
18	C	16.5
19	C	16.5
20	C	16.5
21	C	16.5
22	C	16.5
23	C	16.5
24	C	16.5
25	C	16.5
26	C	16.5
27	C	16.5
28	C	16.5
29	C	16.5
30	C	16.5
31	SE	10
34	W	10
35	W	10
36	W	12
37	W	12
38	W	12
39	W	12
40	W	12
41	W	12
42	W	12
43	W	12
44	W	12
45	W	12
46	W	10
47	W	10
48	SE	10
49	SE	10
50	SE	10
51	SE	10

FOOTCANDLE LEVELS CALCULATED AT GRADE USING INITIAL LUMEN VALUES					
LABEL	AVG	MAX	MIN	AVG/MIN	MAX/MIN
PAVED AREA	2.24	7.2	0.6	3.73	12.00
PROPERTY LINE	0.52	3.8	0.0	N.A.	N.A.
UNDEFINED AREA	0.56	17.1	0.0	N.A.	N.A.
UNDER CANOPY	25.18	33	14	1.80	2.36

LUMINAIRE SCHEDULE										
SYMBOL	QTY	LABEL	ARRANGEMENT	LUMENS	LLF	BUG RATING	WATTS/LUMINAIRE	TOTAL WATTS	MANUFACTURER	CATALOG LOGIC
	5	A4	SINGLE	7565	0.800	B2-U0-G2	66	330	Cre Inc.	ARE-EDG-4M-DA-06-E-UL-BZ-350
	1	A4B	SINGLE	5698	0.800	B1-U0-G2	66	66	CREE, INC.	ARE-EDG-4MB-DA-06-E-UL-BZ-350
	24	C	SINGLE	8475	0.800	B3-U0-G1	53	1272	Cree Lighting	CPY250-C-8L-57K7-F-UL-DM-XX
	5	SE	SINGLE	3902	0.800	B2-U0-G0	34	170	CREE, INC.	SFT-228-PS-RM-03-E-UL-BZ-350-IC
	14	W	SINGLE	2220	0.800	B1-U0-G1	25	350	CREE, INC.	SEC-EDG-2M-WM-02-E-UL-BZ-350

REV.	BY	DATE	DESCRIPTION
R1	JSG	8/25/22	ADD NOTES PER COMMENTS. ADJUST LLF PER COMMENTS. REWORK BUILDING LIGHTING TO MATCH ELEVATION DRAWINGS.
R2	JSG	9/21/22	REVISE NOTES PER COMMENTS

DISCLAIMER
ANY SITE PLAN(S), FLOOR PLAN(S), RENDERING(S), LIGHTING LAYOUT(S) AND PHOTOMETRIC PLAN(S) INCLUDING BUT NOT LIMITED TO ANY PROJECT(S) CREATED/PRODUCED BY RED LEONARD ASSOCIATES INC., ARE ONLY INTENDED FOR ILLUSTRATION AND QUOTING PURPOSES ONLY. RED LEONARD ASSOCIATES HAS THE RIGHT TO USE THIRD PARTY LASERS, SCANNERS, AND CAMERAS BUT ACTUAL PROJECT CONDITIONS, DIMENSIONS, AND ACCURACY OF MEASUREMENTS MAY DIFFER FROM THESE OR ANY PARAMETERS. RED LEONARD ASSOCIATES INC. ASSUMES NO LIABILITY FOR WHAT IS CREATED/PRODUCED IN THESE RECOGNATIONS. THIS INCLUDES BUT IS NOT LIMITED TO THE USE OF, INSTALLATION OF AND/OR INTEGRITY OF EXISTING BUILDING(S), SURROUNDING AREA FOR PRODUCT(S) SUCH AS EXISTING POLES, ANCHOR BOLTS, BASES, ARCHITECTURAL AND SIGNAGE STRUCTURE(S), LANDSCAPING PLAN(S), LIGHTING PLAN(S), FIXTURE SELECTION(S) AND PLACEMENT, MATERIAL(S), COLOR ACCURACY, TEXTURE(S), AND ANYTHING ATTRIBUTED TO PHOTO REALISM THAT IS CREATED. FURTHERMORE, RED LEONARD ASSOCIATES INC. DOES NOT ASSUME LIABILITY WHATSOEVER FOR ANY PURCHASES MADE BY CLIENT BEFORE, DURING, OR AT THE CONCLUSION OF THE PUBLISHED WORK. THE CUSTOMER, ITS RELATIVE AFFILIATES, AS WELL AS ANY OTHER PERSON(S) IN VIEWING OF THIS PRODUCT IS RESPONSIBLE FOR VERIFYING COMPLIANCE WITH ANY BUT NOT LIMITED TO ALL CODES, PERMITS, RESTRICTIONS, INSTRUCTIONS, PURCHASES, AND INSTALLATIONS OF OBJECTS VIEWED WITHIN THIS DOCUMENT(S) OR PROJECT(S). SYMBOLS ARE NOT DRAWN TO SCALE. SIZE IS FOR CLARITY PURPOSES ONLY. SIZES AND DIMENSIONS ARE APPROXIMATE. ACTUAL MEASUREMENTS MAY VARY. DRAWINGS ARE NOT INTENDED FOR ENGINEERING OR CONSTRUCTION USE. THIS DOCUMENT, ANY RED LEONARD DRAWING(S) OR PROJECT(S) IS NOT TO BE USED AND/OR INTENDED FOR ENGINEERING OR CONSTRUCTION PURPOSES, BUT FOR ILLUSTRATIVE PURPOSES ONLY. ANY LOCATIONS OF EMERGENCY LIGHTING SHOWN WERE PROVIDED BY OTHERS. RED LEONARD ASSOCIATES IS NOT RESPONSIBLE FOR INSUFFICIENT LIGHTING DURING AN EMERGENCY EVENT. ANY USE OF THIS DOCUMENTATION AND/OR OTHER ARTICLES PRODUCED BY RED LEONARD WITHOUT WRITTEN AUTHORIZATION FROM JAVINE J. LEONARD IS STRICTLY PROHIBITED.

SCALE: 1" = 30'
LAYOUT BY: BJM
DWG SIZE: D
DATE: 5/07/21

PROJECT NAME:
**CASEY'S #6533
NAPERVILLE, IL**
DRAWING NUMBER:
RL-7345-S1-R2



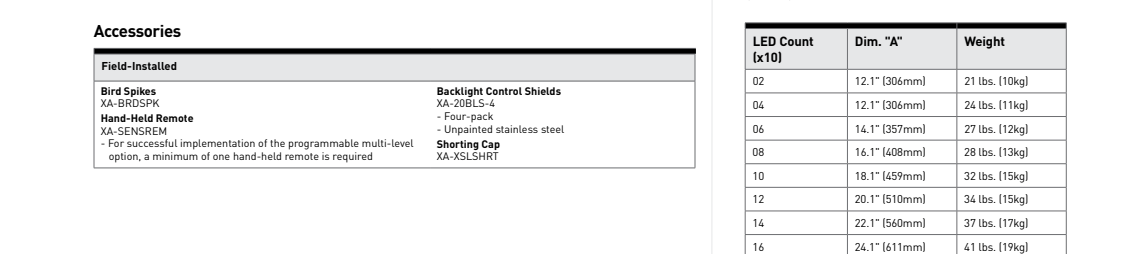
QTY	LABEL	DESCRIPTION
5	A4	ARE-EDG-4M-DA-06-E-UL-BZ-350
1	A4B	ARE-EDG-4MB-DA-06-E-UL-BZ-350

THE EDGE® Series

LED Area/Floor Luminaire

Product Description
The EDGE® Series has a slim, low profile design. Its rugged cast aluminum housing minimizes the need for maintenance and features an integral, weatheright LED driver compartment and high performance aluminum heat sink. Versatile mounting choices. Adjustable Arm, Direct Arm, Direct Arm Long, or Side Arm. Details on page 22. Includes a fasteners guide.

Applications: Parking lots, walkways, campuses, car dealerships, office complexes, and internal courtyards.



Performance Summary

Patented NanoOptic® Product Technology

Assembled in the U.S.A. of U.S. and imported parts

CEC: Minimum 70 CRI

CU: 4000K (v=), 5000K, 5700K (v=), 5000K standard

Limited Warranty: 10 years on luminaires/10 years on ColorStar DeltaGuard® finish

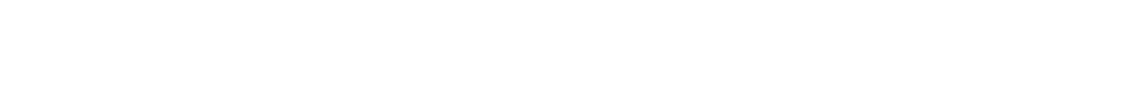
Accessories

LED Count (x10)	Dim. "x"	Weight
02	9.9" (254mm)	20.26 lbs (9.2kg)
04	11.0" (280mm)	23.26 lbs (10.6kg)
06	13.0" (330mm)	25.26 lbs (11.5kg)
08	15.0" (381mm)	27.26 lbs (12.4kg)
10	17.0" (432mm)	29.26 lbs (13.3kg)
12	19.0" (483mm)	31.26 lbs (14.2kg)

Ordering Information

Example: ARE-EDG-5M-4A-12-E-UL-50-100

Product Code	Area	Mounting	LED Series	Color	Options
ARE-EDG-5M	5M	AMP	5000K	5000K	None



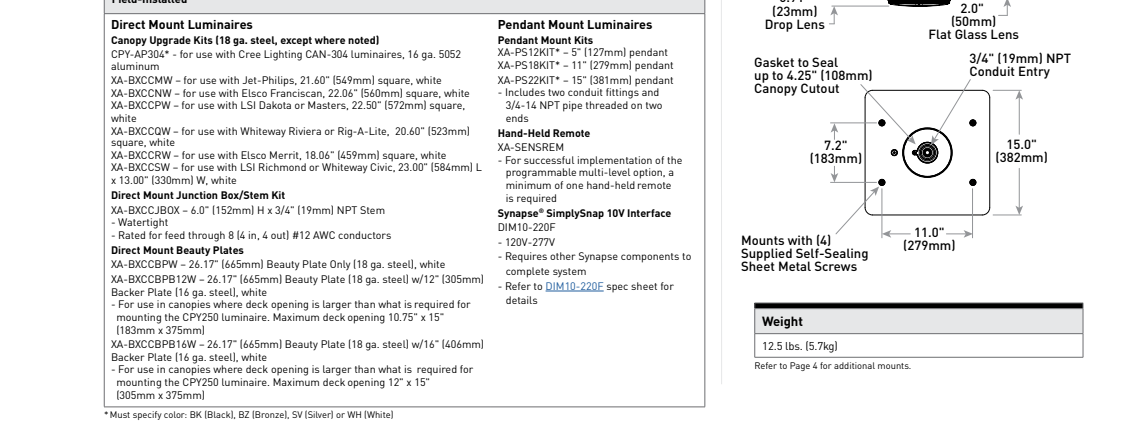
QTY	LABEL	DESCRIPTION
24	C	CPY250-C-8L-57K7-F-UL-DM-XX

CPY Series - Version C

CPY250® LED Canopy/Soft/Luminaire

Product Description
The CPY250® LED Canopy/Soft/Luminaire has an extremely thin profile constructed of rugged cast aluminum. It can be surface mounted directly from below the canopy deck or up to the pendant mounted. Direct lighting of the LEDs is eliminated with a highly efficient patented flat or 0.1° (30mm) drop glass lens.

Applications: Petriuum canopies, CMO housing structures, etc.



Performance Summary

Assembled in the USA by Direct Lighting from US and imported parts

Input Delivered Lumens: Up to 31,000

Efficiency: Up to 145 LPW

CRI: Minimum 70 CRI (40K, 50K, 57K), 80 CRI (40K), 90 CRI (40K, 50K)

CCT: 3000K, 4000K, 5000K, 5700K

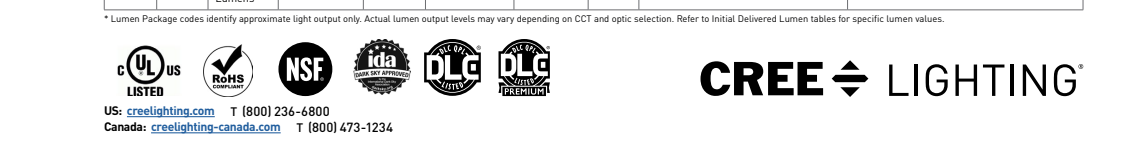
CEC: Minimum 70 CRI

CU: 4000K (v=), 5000K, 5700K (v=), 5000K standard

Limited Warranty: 10 years on luminaires/10 years on ColorStar DeltaGuard® finish

Accessories

LED Count (x10)	Dim. "x"	Weight
02	12.1" (307mm)	27.26 lbs (12.4kg)
04	14.2" (361mm)	29.26 lbs (13.3kg)
06	16.3" (415mm)	31.26 lbs (14.2kg)
08	18.4" (468mm)	33.26 lbs (15.1kg)
10	20.5" (521mm)	35.26 lbs (16.0kg)
12	22.6" (574mm)	37.26 lbs (16.9kg)



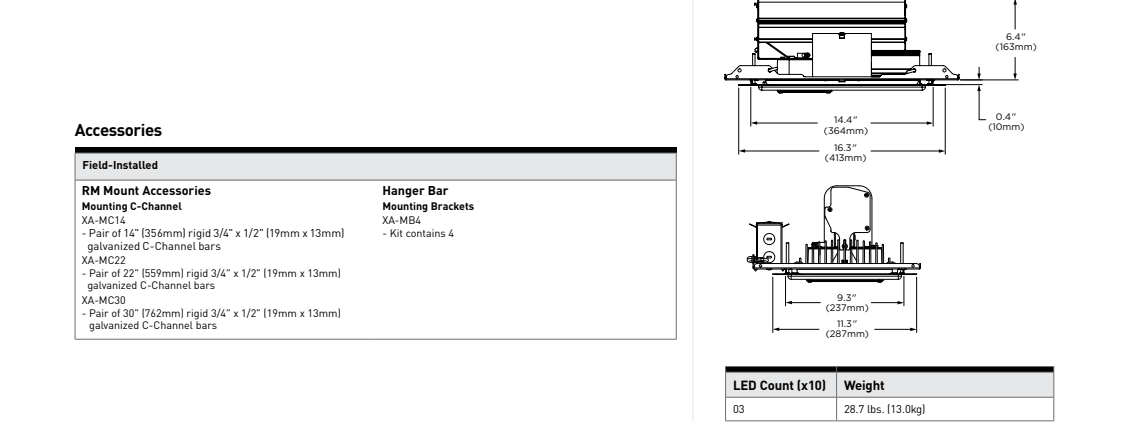
QTY	LABEL	DESCRIPTION
5	SE	SFT-228-PS-RM-03-E-UL-BZ-350-C

228 Series™

LED Soft/Luminaire - IC Rated

Product Description
High performance energy-efficient LED down light designed for use in new construction or remodel applications where there is direct mounting with insulation. The recessed mount is for use (R=2), glass or no lid ceiling with 1" (25mm) to 2" (51mm) on center building construction. Heavy gauge steel recessed mounting flange features 1/2" (12.7mm) deep aperture throat to accommodate most standard ceiling brackets that accept 0.5" (12.7mm) LED cans.

Applications: Petriuum canopies, soffits, indoor retail or industrial spaces.



Performance Summary

Patented NanoOptic® Product Technology

Assembled in the U.S.A. of U.S. and imported parts

CEC: Minimum 70 CRI

CU: 4000K (v=), 5000K, 5700K (v=), 5000K standard

Limited Warranty: 10 years on luminaires/10 years on ColorStar DeltaGuard® finish

Accessories

LED Count (x10)	Weight
02	11.2 lbs (5.1kg)
04	12.2 lbs (5.6kg)
06	13.2 lbs (6.0kg)
08	14.2 lbs (6.4kg)
10	15.2 lbs (6.9kg)
12	16.2 lbs (7.3kg)



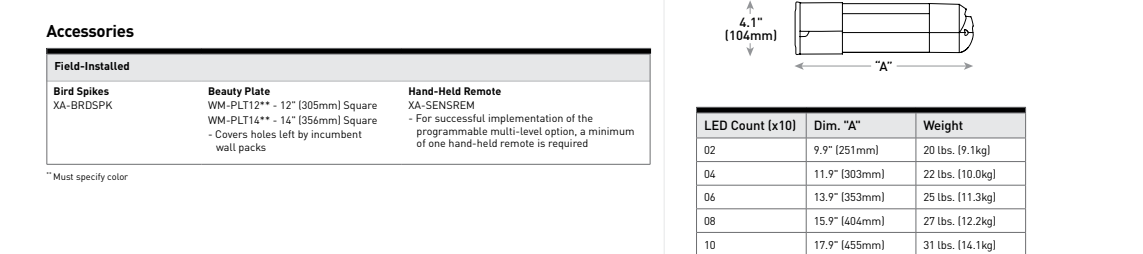
QTY	LABEL	DESCRIPTION
14	W	SEC-EDG-2M-WM-02-E-UL-BZ-350

Cree Edge® Series

LED Security Wall Pack Luminaire

Product Description
The Cree Edge® wall mount luminaire has a slim, low profile design. The luminaire and caps are made from rugged cast aluminum with integral, weatheright LED driver compartment and high performance aluminum heat sink specifically designed for LED applications. Housing is rugged aluminum, includes a threaded mounting bar for installation over standard and roof top lighting with 2-Boss. Secure to wall with two 3/16" (4.8mm) screws by offset. Contact entry top, bottom.

Applications: Includes fasteners guide.



Performance Summary

Patented NanoOptic® Product Technology

Assembled in the U.S.A. of U.S. and imported parts

CEC: Minimum 70 CRI

CU: 4000K (v=), 5000K, 5700K (v=), 5000K standard

Limited Warranty: 10 years on luminaires/10 years on ColorStar DeltaGuard® finish

Accessories

LED Count (x10)	Dim. "x"	Weight
02	9.9" (254mm)	20.26 lbs (9.2kg)
04	11.0" (280mm)	23.26 lbs (10.6kg)
06	13.0" (330mm)	25.26 lbs (11.5kg)
08	15.0" (381mm)	27.26 lbs (12.4kg)
10	17.0" (432mm)	29.26 lbs (13.3kg)
12	19.0" (483mm)	31.26 lbs (14.2kg)



THE EDGE® LED Area/Floor Luminaire

Product Specifications

CONSTRUCTION & MATERIALS

- Slim, low profile design
- Luminaire is constructed of rugged cast aluminum with integral heat sink specifically designed for LED
- Flat lens is 1/2" (12.7mm) recessed glass
- Drop lens is 1/2" (12.7mm) recessed glass
- Direct mount is suitable for use in single or double deck canopy with a recessed 1/2" (12.7mm) recessed glass
- Direct mount luminaire mounts directly to the canopy deck with the drilling Mounting is rugged die cast aluminum, housing is 0.25" (6.35mm) thick
- Mounting is rugged die cast aluminum, housing is 0.25" (6.35mm) thick
- Mounting is rugged die cast aluminum, housing is 0.25" (6.35mm) thick
- Mounting is rugged die cast aluminum, housing is 0.25" (6.35mm) thick
- Mounting is rugged die cast aluminum, housing is 0.25" (6.35mm) thick

Electrical Data*

LED Count (x10)	System Voltage (V)	Total Current (A)
02	120V	2.00
04	120V	4.00
06	120V	6.00
08	120V	8.00
10	120V	10.00
12	120V	12.00

REGULATORY & VOLUNTARY QUALIFICATIONS

- UL Listed
- Suitable for wet locations
- Enclosure rated IP69K per IEC 60529 when ordered with P or R options
- Consistent factory for CE Certified products
- Compliant with ANSI C136.2-01, 02, 03, 04, 05, 06, 07, 08, 09, 10, 11, 12, 13, 14, 15, 16, 17, 18, 19, 20, 21, 22, 23, 24, 25, 26, 27, 28, 29, 30, 31, 32, 33, 34, 35, 36, 37, 38, 39, 40, 41, 42, 43, 44, 45, 46, 47, 48, 49, 50, 51, 52, 53, 54, 55, 56, 57, 58, 59, 60, 61, 62, 63, 64, 65, 66, 67, 68, 69, 70, 71, 72, 73, 74, 75, 76, 77, 78, 79, 80, 81, 82, 83, 84, 85, 86, 87, 88, 89, 90, 91, 92, 93, 94, 95, 96, 97, 98, 99, 100



CPY250® LED Canopy/Soft/Luminaire - Version C

Product Specifications

CONSTRUCTION & MATERIALS

- Slim, low profile design
- Luminaire is constructed of rugged cast aluminum with integral heat sink specifically designed for LED
- Flat lens is 1/2" (12.7mm) recessed glass
- Drop lens is 1/2" (12.7mm) recessed glass
- Direct mount is suitable for use in single or double deck canopy with a recessed 1/2" (12.7mm) recessed glass
- Direct mount luminaire mounts directly to the canopy deck with the drilling Mounting is rugged die cast aluminum, housing is 0.25" (6.35mm) thick
- Mounting is rugged die cast aluminum, housing is 0.25" (6.35mm) thick
- Mounting is rugged die cast aluminum, housing is 0.25" (6.35mm) thick
- Mounting is rugged die cast aluminum, housing is 0.25" (6.35mm) thick
- Mounting is rugged die cast aluminum, housing is 0.25" (6.35mm) thick

Electrical Data*

LED Count (x10)	System Voltage (V)	Total Current (A)
02	120V	2.00
04	120V	4.00
06	120V	6.00
08	120V	8.00
10	120V	10.00
12	120V	12.00

REGULATORY & VOLUNTARY QUALIFICATIONS

- UL Listed
- Suitable for wet locations when ordered with DM DM mount w/IC option, PD mount w/IC option, and the luminaire. General use only when used with used with CEUS Listed wet location junction box per ANSI/IEEE C90.1 necessary for outdoor use only
- Enclosure meets IP69K requirements per IEC 60529 when ordered with DM and DM options
- ANSI C136.2 (ANSI/IESNA) and ANSI/IESNA (ANSI/IESNA) listed for wet locations in accordance with IEEEANSI C92.2-12. Option includes 100V surge protection
- Meets FCC Part 15, Subpart B, Class A limits for conducted and radiated emissions
- Meets FCC Part 15, Subpart B, Class A limits for conducted and radiated emissions
- Meets FCC Part 15, Subpart B, Class A limits for conducted and radiated emissions



228 Series™ LED Soft/Luminaire - IC Rated

Product Specifications

CONSTRUCTION & MATERIALS

- Slim, low profile design
- Luminaire is constructed of rugged die cast aluminum with high performance aluminum heat sink specifically designed for LED applications
- Flat lens is 1/2" (12.7mm) recessed glass
- Drop lens is 1/2" (12.7mm) recessed glass
- Direct mount is suitable for use in single or double deck canopy with a recessed 1/2" (12.7mm) recessed glass
- Direct mount luminaire mounts directly to the canopy deck with the drilling Mounting is rugged die cast aluminum, housing is 0.25" (6.35mm) thick
- Mounting is rugged die cast aluminum, housing is 0.25" (6.35mm) thick
- Mounting is rugged die cast aluminum, housing is 0.25" (6.35mm) thick
- Mounting is rugged die cast aluminum, housing is 0.25" (6.35mm) thick
- Mounting is rugged die cast aluminum, housing is 0.25" (6.35mm) thick

Electrical Data*

LED Count (x10)	System Voltage (V)	Total Current (A)
02	120V	2.00
04	120V	4.00
06	120V	6.00
08	120V	8.00
10	120V	10.00
12	120V	12.00

REGULATORY & VOLUNTARY QUALIFICATIONS

- UL Listed
- Suitable for wet locations when ordered with DM DM mount w/IC option, PD mount w/IC option, and the luminaire. General use only when used with used with CEUS Listed wet location junction box per ANSI/IEEE C90.1 necessary for outdoor use only
- Enclosure meets IP69K requirements per IEC 60529 when ordered with DM and DM options
- ANSI C136.2 (ANSI/IESNA) and ANSI/IESNA (ANSI/IESNA) listed for wet locations in accordance with IEEEANSI C92.2-12. Option includes 100V surge protection
- Meets FCC Part 15, Subpart B, Class A limits for conducted and radiated emissions
- Meets FCC Part 15, Subpart B, Class A limits for conducted and radiated emissions
- Meets FCC Part 15, Subpart B, Class A limits for conducted and radiated emissions



Cree Edge® LED Security Wall Pack Luminaire

Product Specifications

CONSTRUCTION & MATERIALS

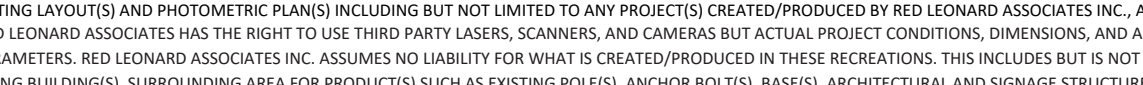
- Slim, low profile design
- Luminaire is constructed of rugged die cast aluminum with integral, weatheright LED driver compartment and high performance aluminum heat sink specifically designed for LED applications
- Flat lens is 1/2" (12.7mm) recessed glass
- Drop lens is 1/2" (12.7mm) recessed glass
- Direct mount is suitable for use in single or double deck canopy with a recessed 1/2" (12.7mm) recessed glass
- Direct mount luminaire mounts directly to the canopy deck with the drilling Mounting is rugged die cast aluminum, housing is 0.25" (6.35mm) thick
- Mounting is rugged die cast aluminum, housing is 0.25" (6.35mm) thick
- Mounting is rugged die cast aluminum, housing is 0.25" (6.35mm) thick
- Mounting is rugged die cast aluminum, housing is 0.25" (6.35mm) thick
- Mounting is rugged die cast aluminum, housing is 0.25" (6.35mm) thick

Electrical Data*

LED Count (x10)	System Voltage (V)	Total Current (A)
02	120V	2.00
04	120V	4.00
06	120V	6.00
08	120V	8.00
10	120V	10.00
12	120V	12.00

REGULATORY & VOLUNTARY QUALIFICATIONS

- UL Listed
- Suitable for wet locations
- Enclosure rated IP69K per IEC 60529 when ordered with P or R options
- Consistent factory for CE Certified products
- Compliant with ANSI C136.2-01, 02, 03, 04, 05, 06, 07, 08, 09, 10, 11, 12, 13, 14, 15, 16, 17, 18, 19, 20, 21, 22, 23, 24, 25, 26, 27, 28, 29, 30, 31, 32, 33, 34, 35, 36, 37, 38, 39, 40, 41, 42, 43, 44, 45, 46, 47, 48, 49, 50, 51, 52, 53, 54, 55, 56, 57, 58, 59, 60, 61, 62, 63, 64, 65, 66, 67, 68, 69, 70, 71, 72, 73, 74, 75, 76, 77, 78, 79, 80, 81, 82, 83, 84, 85, 86, 87, 88, 89, 90, 91, 92, 93, 94, 95, 96, 97, 98, 99, 100



ANY SITE PLANS, FLOOR PLANS, RENDERINGS, LIGHTING LAYOUT(S) AND PHOTOMETRIC PLAN(S) INCLUDING BUT NOT LIMITED TO ANY PROJECT(S) CREATED/PRODUCED BY RED LEONARD ASSOCIATES INC., ARE ONLY INTENDED FOR ILLUSTRATION AND QUOTING PURPOSES ONLY. RED LEONARD ASSOCIATES HAS THE RIGHT TO USE THIRD PARTY LASERS, SCANNERS, AND CAMERAS BUT ACTUAL PROJECT CONDITIONS, DIMENSIONS, AND ACCURACY OF MEASUREMENTS MAY DIFFER FROM THESE OR ANY PARAMETERS. RED LEONARD ASSOCIATES INC. ASSUMES NO LIABILITY FOR WHAT IS CREATED/PRODUCED IN THESE RECREATIONS. THIS INCLUDES BUT IS NOT LIMITED TO THE USE OF, INSTALLATION OF AND/OR INTEGRITY OF EXISTING BUILDINGS, SURROUNDING AREA FOR PRODUCT(S) SUCH AS EXISTING PLOTTING, ANCHOR BOLTS, BASE(S), ARCHITECTURAL AND GEOMETRIC STRUCTURES, LANDSCAPING PLANS, LIGHTING PLANS, FURNITURE SELECTION(S) AND PLACEMENT, MATERIALS, COLOR ACCURACY, TEXTURES, AND ANYTHING ATTRIBUTED TO PHOTO REALISM THAT IS CREATED. FURTHERMORE, RED LEONARD ASSOCIATES INC. DOES NOT ASSUME LIABILITY WHATSOEVER FOR ANY PURCHASES MADE BY CLIENT BEFORE, DURING, OR AT THE CONCLUSION OF THE PUBLISHED WORK. THE CUSTOMER, ITS RELATIVE AFFILIATES, AS WELL AS ANY OTHER PERSON(S) IN VIEWING OF THIS PRODUCT IS RESPONSIBLE FOR VERIFYING COMPLIANCE WITH ALL LOCAL CODES, PERMITS, RESTRICTIONS, INSTRUCTIONS, PURCHASES, AND INSTALLATIONS OF OBJECTS VIEWED WITHIN THIS DOCUMENT(S) OR PROJECT(S). SYMBOLS ARE NOT DRAWN TO SCALE. SIZE IS FOR CLARITY PURPOSES ONLY. SIZES AND DIMENSIONS ARE APPROXIMATE. ACTUAL MEASUREMENTS MAY VARY. DRAWINGS ARE NOT INTENDED FOR ENGINEERING OR CONSTRUCTION USE. THIS DOCUMENT, ANY RED LEONARD DRAWING(S), OR PROJECT(S) IS NOT TO BE USED OR ANYWHERE FOR ENGINEERING OR CONSTRUCTION PURPOSES, BUT FOR ILLUSTRATIVE PURPOSES ONLY. USE OF THIS DOCUMENTATION AND/OR OTHER DOCUMENTS PRODUCED BY RED LEONARD WITHOUT WRITTEN AUTHORIZATION FROM JAYME J. LEONARD IS STRICTLY PROHIBITED.

