

ZONING INFORMATION

B2 ZONING (PUD)
 CHILDCARE FACILITY - CONDITIONAL USE
 REQUIRES MAJOR CHANGE TO PUD
 PARKING 4 SP PER 1,000 SF BLDG AREA
 12,824SF BLDG = 51 SPACES
 NOTE: 40 SPACES PROVIDED ON SITE

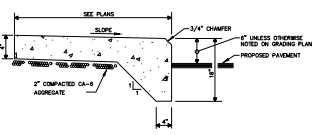
YARD REQUIREMENTS:	BLDG	PKG.
FRONT (BEEBE E)	20'	15'
CORNER SIDE (BEEBE S)	15'	15'
INTERIOR SIDE (N)	10'	5'
REAR (W)	10'	5'

ACCESSORY PLAYGROUND COMPLETELY FENCED
 ALLOWED IN REAR AND CORNER SIDE YARDS

PLAN NOTES:

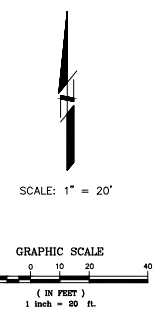
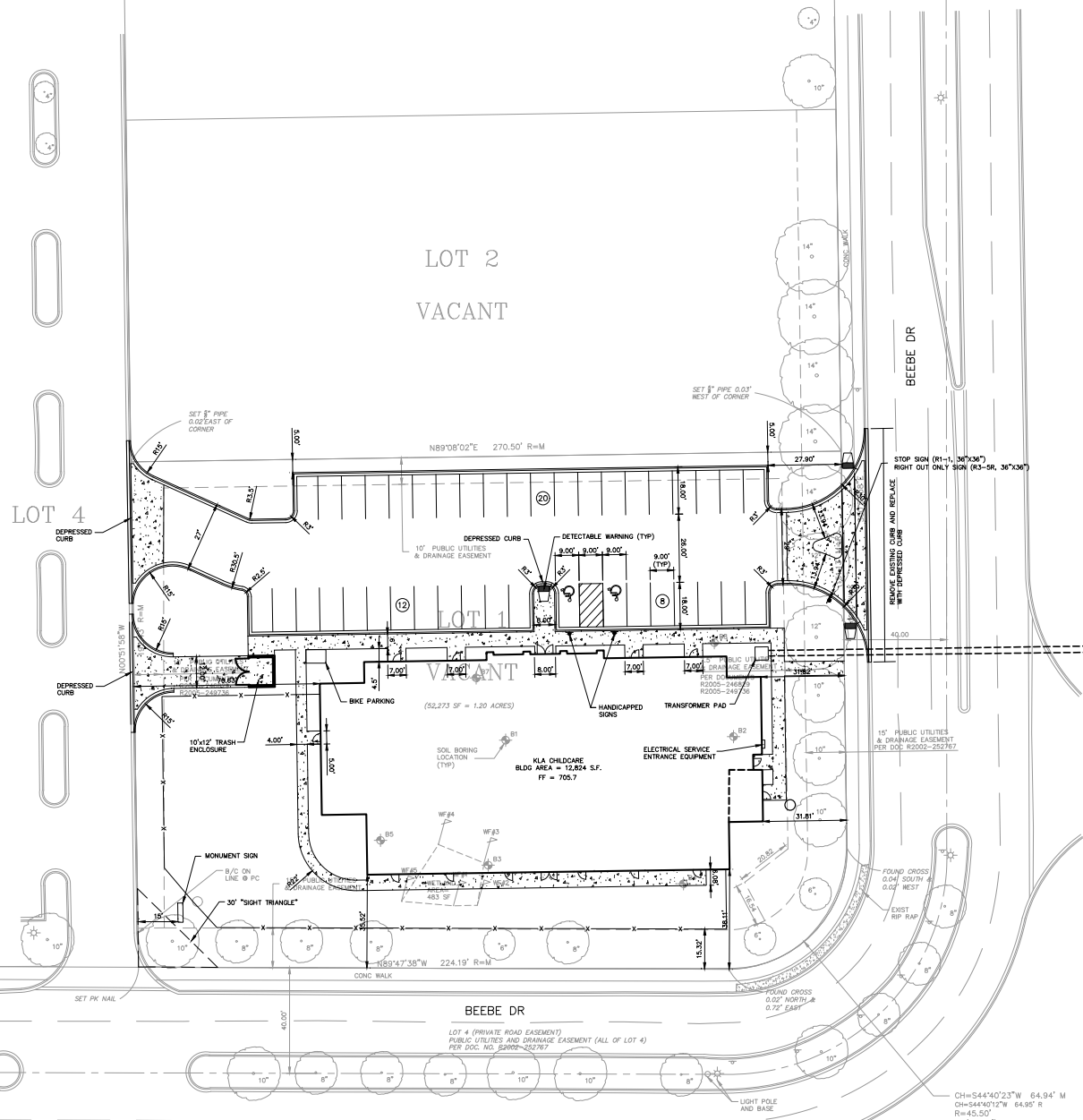
1. ALL DIMENSIONS ARE TO THE BACK OF CURB OR BUILDING FOUNDATION UNLESS OTHERWISE NOTED.
2. ALL PROPOSED CURB IS REVERSE PITCHED 8-1/2" CURB AND GUTTER UNLESS OTHERWISE NOTED. PROVIDE DEPRESSED CURB (PER REVISED IDOT DETAIL 808001-26) AND HANDICAP RAMP (WHERE REQUIRED) WHERE INDICATED. ALL WALKS, PRIOR TO ENTERING THE CROSSWALKS, ARE TO HAVE DETECTABLE WARNING PANEL INSTALLED. THE WIDTH OF THE PANEL SHALL BE THE WIDTH OF THE SIDEWALK.
3. ALL PARKING LOT STRIPING SHALL BE 4" WIDE WHITE PAINT UNLESS OTHERWISE NOTED. ALL HANDICAP PARKING STALLS SHALL BE 4" WIDE YELLOW PAINT.
4. ALL PERPENDICULAR PARKING STALLS ARE 9' WIDE (STRIPING TO STRIPING OR STRIPING TO FACE OF CURB) BY 18.0' DEEP (BACK OF CURB TO END OF STRIPING) EXCLUDING HANDICAP STALLS.

HEADER WALK



- NOTES:**
1. REMOVE ALL TOPSOIL. PLACE CONCRETE ON 2" COMPACTED CA-4 STONE.
 2. A CONTROL (CONTRACTION) JOINT SHALL BE TOoled AT 8' INTERVALS. EXPANSION JOINTS WITH 3/4" BRASSING FILLER MATERIAL SHALL BE TOoled AT 40' INTERVALS.
 3. ALL WALKS SHALL BE FITTED TO DRAIN WITH A MIN. 1/4" PER 1' CROSS SLOPE.
 4. CONCRETE SHALL BE CLASS II.

DRAWING NAME: HEADER



PAVEMENT SECTION

DESCRIPTION	THICKNESS	DI
2" HMA SURFACE COURSE, MN.D. N 70		0.80
2" HMA BINDER COURSE, IL-19, N 70		0.66
12" AGGREGATE BASE COURSE (CA-6)		1.56
		3.02

REVIEW SET
 NOT FOR CONSTRUCTION

PROJECT NO. **2020-004**
 SHEET NO. **5** OF **11**

GEOMETRIC PLAN

KLA CHILDCARE FACILITY
3644 WHITE EAGLE DR.
NAPERVILLE, ILLINOIS

ASR ESTATE, LLC
3644 WHITE EAGLE DR.
NAPERVILLE, IL 60564

INTECH CONSULTANTS, INC.
 1888 UNIVERSITY LANE, SUITE D
 ENGINEERS - SURVEYORS
 LEILE, ILLINOIS 60532
 PHONE: 630-969-0556
 LICENSE: 0309049056

SCALE: 1" = 20'
 DATE: 3-1-21
 DRAWN: SJP
 CHECKED: EFS
 PROJECT NO. 2020-004
 SHEET NO. 5 OF 11

EXHIBIT D