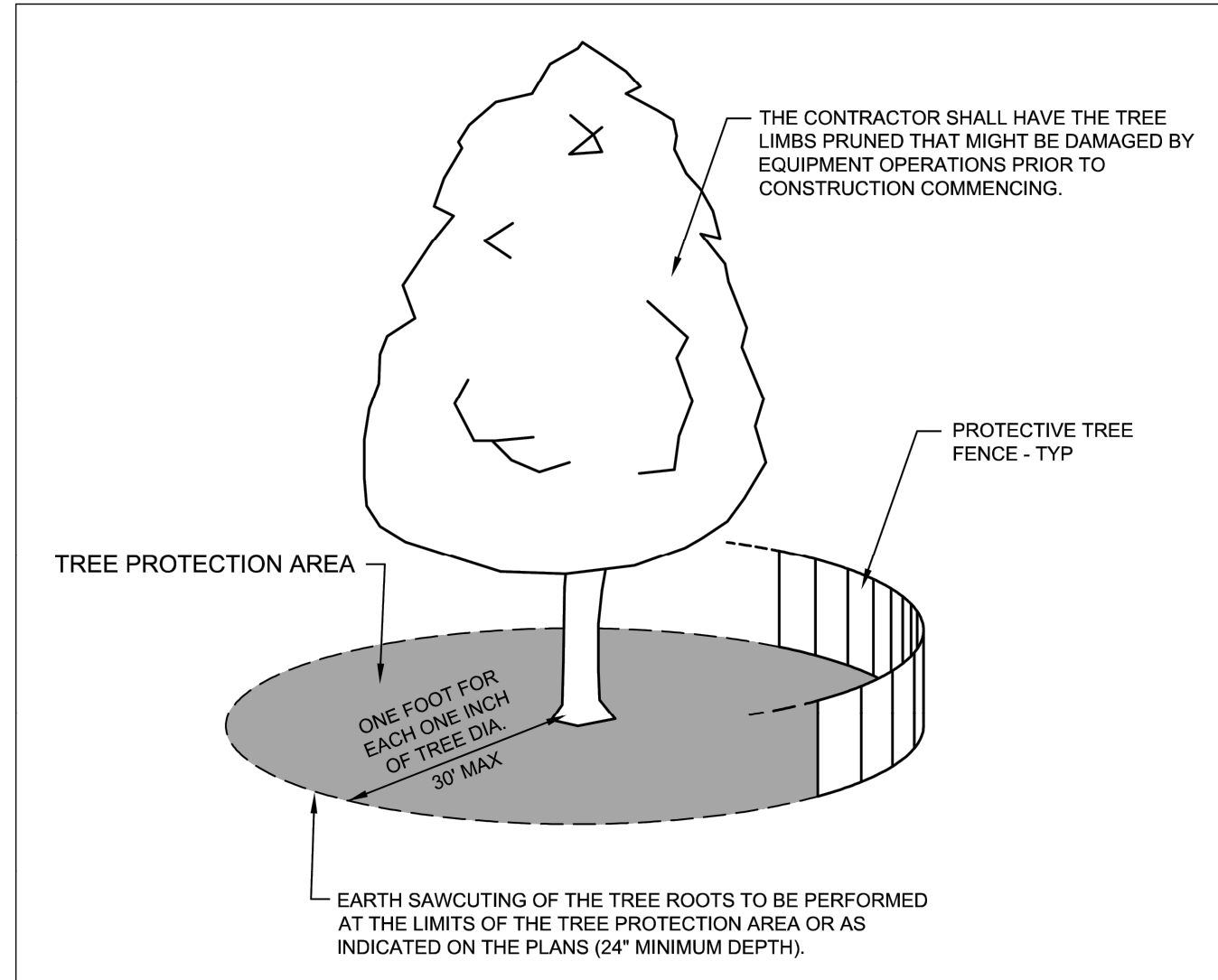
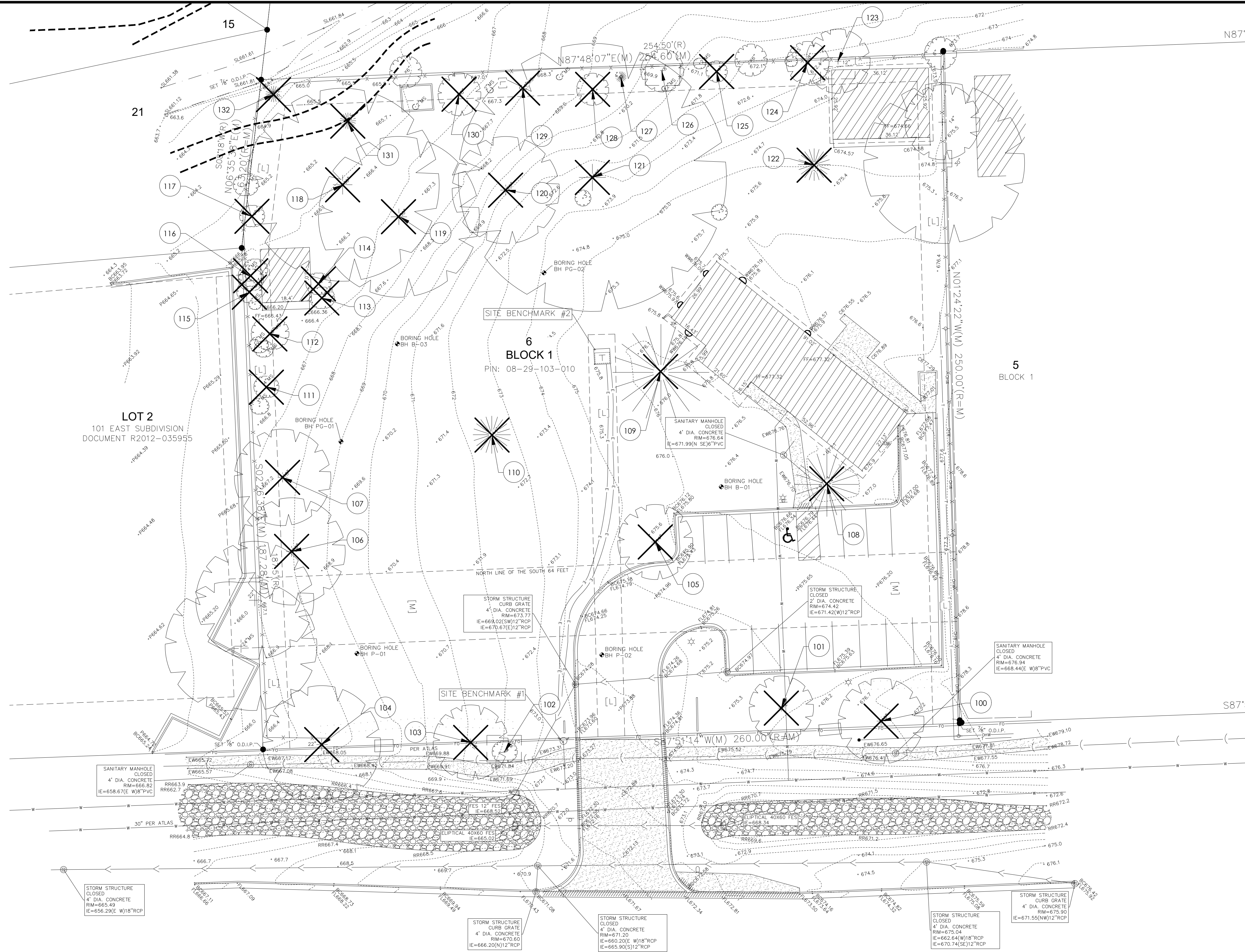


| CALLOUT | COMMON NAME | TRUNK | DBH | CONDITION | NOTES |
|---------|----------------------|--------|-----|-----------|---------|
| 100 | ASH | SINGLE | 16" | FAIR | REMOVE |
| 101 | MAPLE | SINGLE | 12" | POOR | REMOVE |
| 102 | WASHINGTON HAWTHORNE | MULTI | 4" | FAIR | PROTECT |
| 103 | HACKBERRY | SINGLE | 14" | DEAD | REMOVE |
| 104 | ELM | SINGLE | 22" | FAIR | REMOVE |
| 105 | MAPLE | SINGLE | 14" | FAIR | REMOVE |
| 106 | ASH | SINGLE | 20" | FAIR | REMOVE |
| 107 | MAPLE | SINGLE | 18" | FAIR | REMOVE |
| 108 | SPRUCE | SINGLE | 24" | FAIR | REMOVE |
| 109 | SPRUCE | SINGLE | 36" | FAIR | REMOVE |
| 110 | ARBORVITAE | SINGLE | 14" | POOR | REMOVE |
| 111 | BUCKTHORN | MULTI | 4" | UNKNOWN | REMOVE |
| 112 | BUCKTHORN | MULTI | 6" | UNKNOWN | REMOVE |
| 113 | BUCKTHORN | MULTI | 4" | UNKNOWN | REMOVE |
| 114 | BUCKTHORN | MULTI | 4" | UNKNOWN | REMOVE |
| 115 | BUCKTHORN | MULTI | 4" | UNKNOWN | REMOVE |
| 116 | BUCKTHORN | MULTI | 4" | UNKNOWN | REMOVE |
| 117 | BUCKTHORN | MULTI | 4" | UNKNOWN | REMOVE |
| 118 | AMUR CORKTREE | SINGLE | 36" | FAIR | REMOVE |
| 119 | HONEYLOCUST | SINGLE | 30" | FAIR | REMOVE |
| 120 | OAK | SINGLE | 20" | FAIR | REMOVE |
| 121 | ELM | SINGLE | 50" | FAIR | REMOVE |
| 122 | PINE | SINGLE | 12" | FAIR | REMOVE |
| 123 | MULBERRY | SINGLE | 12" | POOR | PROTECT |
| 124 | BUCKTHORN | MULTI | 8" | UNKNOWN | REMOVE |
| 125 | BUCKTHORN | MULTI | 4" | UNKNOWN | REMOVE |
| 126 | MULBERRY | SINGLE | 8" | POOR | PROTECT |
| 127 | ARBORVITAE | SINGLE | 4" | UNKNOWN | PROTECT |
| 128 | UNKNOWN | SINGLE | 6" | DEAD | REMOVE |
| 129 | BUCKTHORN | MULTI | 4" | UNKNOWN | REMOVE |
| 130 | DEAD | SINGLE | 8" | UNKNOWN | REMOVE |
| 131 | JUNIPER | SINGLE | 6" | UNKNOWN | REMOVE |
| 132 | JUNIPER | SINGLE | 6" | UNKNOWN | REMOVE |



- NOTES:
- A TREE PROTECTION AREA SHALL BE ESTABLISHED AROUND A TREE A DISTANCE OF ONE FOOT FOR EACH ONE INCH OF TREE DIAMETER, UP TO A MAXIMUM OF 30 FEET.
 - PROTECTIVE TREE FENCE SHALL BE INSTALLED AT THE LIMITS OF THE TREE PROTECTION AREA. THE FENCE SHALL BE HIGH ENOUGH SO AS TO BE VISIBLE TO ALL CONSTRUCTION PERSONNEL.
 - GRADE CHANGES, UTILITY TRENCHES, STORAGE OF CONSTRUCTION MATERIAL, DUMPING OF WASTE, OR OPERATION OR STORAGE OF ANY EQUIPMENT SHALL NOT BE ALLOWED WITHIN THE TREE PROTECTION AREA.
 - AUGURING IS REQUIRED IF A UTILITY MUST BE INSTALLED WITHIN THE TREE PROTECTION AREA. AUGURED UTILITIES MUST BE A MINIMUM OF 24 INCHES BELOW GRADE.
 - ALL TREES TO BE SAVED WHICH HAVE BEEN SUBJECTED TO CONSTRUCTION ACTIVITY WITHIN THE TREE PROTECTION AREA SHOULD BE SELECTIVELY THINNED 10% BY AN ARBORIST SKILLED AT THE SELECTIVE THINNING PROCEDURE. NONE OF THE TREES SHALL BE TOPPED, HEADED BACK, SKINNED (REMOVAL OF THE INTERIOR BRANCHES), OR CLIMBED WITH SPIKES. ALL DEAD WOOD SHOULD BE REMOVED TO AVOID HAZARD.
 - IT IS RECOMMENDED THAT FOLLOWING CONSTRUCTION, TREES BE MAINTAINED IN THEIR NATIVE CONDITION. NO LAWN SHOULD BE PLACED AROUND THE TREES. IT IS RECOMMENDED THAT THE AREA BE MULCHED WITH 2 INCHES OF DECOMPOSED LEAVES AND 2 INCHES OF WOOD CHIPS OR BARK.

EXISTING TREE CALCULATIONS:

| | |
|---------------------------|----|
| 1. EXISTING TREES REMOVED | 29 |
| EXISTING TREES PROTECTED | 4 |

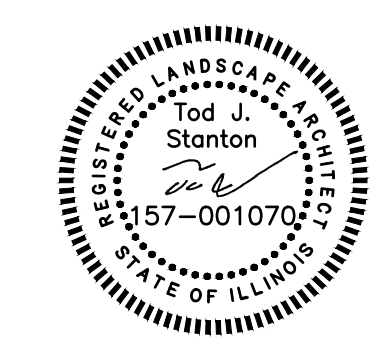
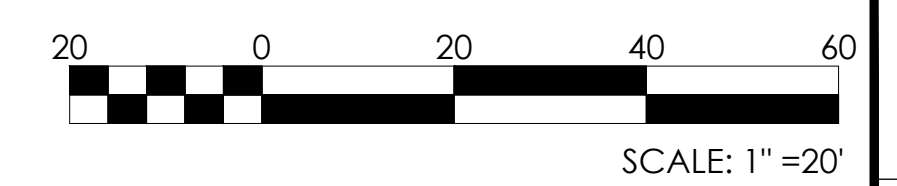
2. TREE PROTECTION FENCING SHALL BE INSTALLED AND APPROVED PRIOR TO ISSUANCE OF BUILDING PERMIT.

3. PRIOR TO REMOVAL OF TREES, CONTRACTOR SHALL CONTACT THE CITY FORESTER FOR SITE VISIT & CONSENT OF REMOVAL.

X = TREE TO BE REMOVED

City of Naperville
STANDARD TREE PROTECTION
 DETAIL
 REVISED: 08/01/2018 SHEET 1 OF 1
 LANDSCAPE 10
790.10

1 TREE PROTECTION FENCE
 SCALE: N.T.S.



PRELIMINARY
 NOT FOR CONSTRUCTION



Design Perspectives, Inc.
 Grounded in Creativity
 1167 Hobson Mill Drive
 Naperville, Illinois 60540
 Telephone: (630) 606-0776
 www.design-perspectives.net

PRIMROSE SCHOOLS:
 NAPERVILLE, IL

25W710 75TH STREET
 NAPERVILLE, IL 60565
 THESE DOCUMENTS CONTAIN INFORMATION PROPRIETARY TO ADA ARCHITECTS, INC.
 UNAUTHORIZED USE OF THESE DOCUMENTS IS EXPRESSLY PROHIBITED UNLESS AGREED UPON IN WRITING.

REVISIONS

| # | DATE | TYPE | DESCRIPTION |
|---|------------|--------------------|-------------|
| 1 | 07-19-2024 | ZONING SUBMITTAL | |
| 2 | 11-12-2024 | CITY RES-SUBMITTAL | |

TREE REMOVAL/ PROTECTION PLAN
 DATE 07/19/2024
 JOB NO. 23529
TP-100
 SHEET NO.