

PRELIMINARY ENGINEERING

FOR CAR WASH FACILITY

AT
1492 W. OGDEN AVE.
NAPERVILLE, IL 60540



PREPARED FOR:

PREPARED BY:

ILLINOIS STATE BOARD OF PROFESSIONAL ENGINEERS - LICENSE #141033030

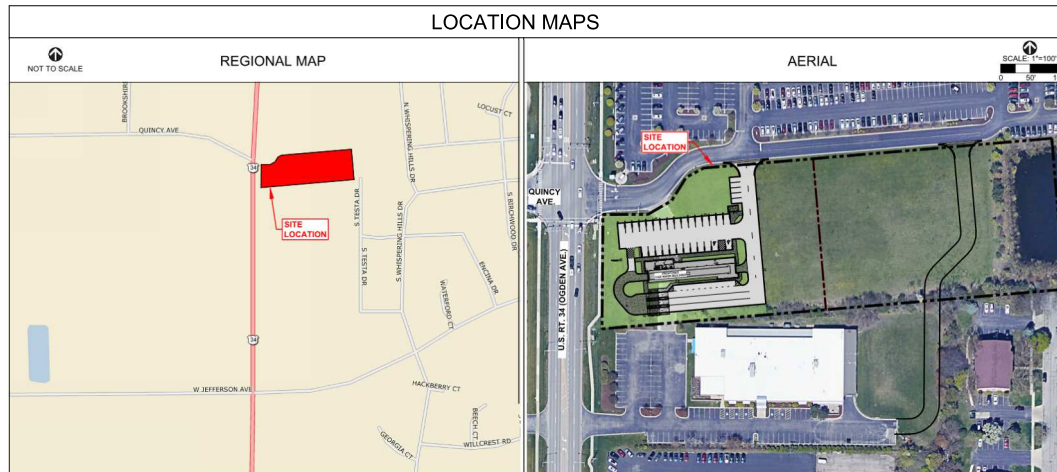
NO.	DESCRIPTION	DATE
1	VLL-PRELM-REV. #1	10-15-22
2	VLL-PRELM-REV. #2	11-16-22

DESCRIPTION	EXISTING	PROPOSED
SEWERY SEWER		
STORM SEWER		
COMMERCIAL POWER		
WATERMAIN		
GAS		
TELEPHONE		
ELECTRIC		
CROSSHEAD FIBER		
CURB		
PLANT		
STORMwater CONTROL OR MANHOLE OPENING		
STORMwater MANHOLE		
STORMwater MANHOLE CLOSED LID		
PLANT & PLUMBED END SECTION		
SEWER CLEANOUT		
FIRE HYDRANT & VALVE VAULT		
MANHOLE CONNECTION & BOX		
WATER METER VAULT		
GAS VALVE		
LIGHTS		
UTILITY POLE & GUY ANCHOR		
DRAINAGE ARROWS		
ELEVATIONS		
TOP OF CURB		
EDGE OF PAVEMENT		
TOP OF CURB		
EDGE OF PAVEMENT		
OUTSIDE AND UNDERFLOW		
SOIL BORINGS		
TRAFFIC SIGN		
TRAFFIC ARROW		
PARKING STALL COUNT		
CONCRETE		
WALL BOX		
TRAFFIC SIGNAL BOX		
TRAFFIC SIGNAL		
TELEPHONE BOX		
FOUND IRON PIPE		
SET IRON PIPE		
FOUND IRON ROD		
SET IRON ROD		
FOUND CUT CROSS		
SET CUT CROSS		
FOUND PAVEMENT		
SET PAVEMENT		
FOUND CONCRETE MONUMENT		
SET CONCRETE MONUMENT		

ALL DIMENSIONS, COORDINATES, AND PROPOSED GRADES ARE REFERENCED TO THE EDGE OF PAVEMENT UNLESS OTHERWISE MARKED. OPEN TO BULK AND DISHED LIDS INDICATE ENTIRE COMPLETION.

OPERATES 24 HOURS A DAY 365 DAYS A YEAR

Call Before You Dig
ILLINOIS ONE CALL SYSTEM
CALL 48 HOURS TOLL FREE (800) 488-6848
48 HOURS BEFORE YOU DIG



AGENCY	APPLICATION #	PERMIT #	DATE ISSUED
CITY OF NAPERVILLE			
ILLINOIS ENVIRONMENTAL PROTECTION AGENCY - WATER POLLUTION CONTROL			
ILLINOIS ENVIRONMENTAL PROTECTION AGENCY - WATER			
ILLINOIS ENVIRONMENTAL PROTECTION AGENCY - NOTICE OF INTENT			

No.	SHEET TITLE
C-1	TITLE SHEET
C-2	SPECIFICATIONS
C-3	EXISTING CONDITIONS
C-4	GEOMETRIC PLAN
C-5	GRADING PLAN
C-6	UTILITY PLAN
C-7	CAR QUEUE LINE EXHIBIT
C-8	CAR TURNING EXHIBIT
C-9	FIRE TRUCK TURNING EXHIBIT
C-10	DRAINAGE EXHIBIT
C-11	STORMWATER POLLUTION PREVENTION PLAN
C-12	STORMWATER POLLUTION PREVENTION DETAILS
C-13	DETAILS
C-14	DETAILS
C-15	DETAILS
C-16	DETAILS

BENCHMARK & DATUM:

SOURCE BENCHMARKS:

- CITY OF NAPERVILLE SURVEY MONUMENT STATION NO. 219
ELEVATION = 692.52 NAVD88
- CITY OF NAPERVILLE SURVEY MONUMENT STATION NO. 1508
ELEVATION = 690.61 NAVD88

UTILITIES CONTACTS

THE CONTRACTOR FOR ALL CONTRACTS SHALL NOTIFY:

NAME (description)	PHONE NUMBER	CONTACT PERSON

**NOT FOR CONSTRUCTION
PENDING PERMIT REVIEW**

SURVEYED BY:

ASM Consultants, Inc.
16 E Wilson St - Batavia IL 60510
(630) 879-0200
advanog@asmcvt.com

PRIOR TO BEGINNING ANY CONSTRUCTION, S&B COMPANIES SHALL ESTABLISH ON THE GROUND, THE LOCATION OF UNDERGROUND PIPES, CONDUITS, OR CABLES ADJOINING OR CROSSING PROPOSED CONSTRUCTION.

PRELIMINARY ENGINEERING

FOR

CAR WASH FACILITY
1492 W. OGDEN AVE.
NAPERVILLE, IL 60540

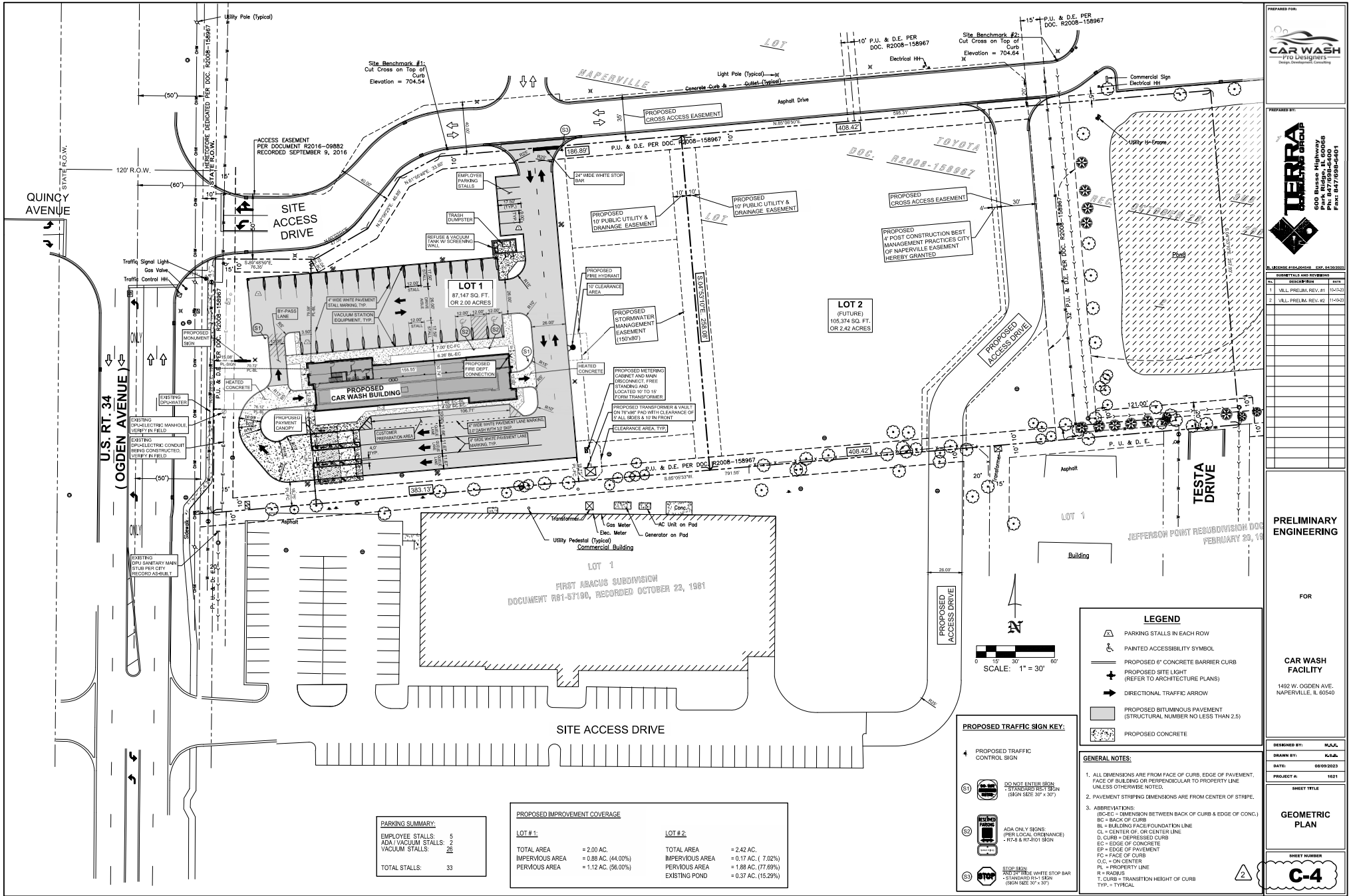
DESIGNED BY: M.C.S.
DRAWN BY: K.S.B.
DATE: 06/09/2023
PROJECT #: 1621

SHEET TITLE

TITLE SHEET

SHEET NUMBER
C-1





PREPARED FOR
CAR WASH
 Pro-Designers
 Design & Construction Company

PREPARED BY
TERRA
 CONSULTANTS
 600 N. Main Highway
 Park Ridge, IL 60068
 Phone: 847/958-6401

REVISIONS

NO.	DESCRIPTION	DATE
1	W.L. PRELIM. REV. #1	10/15/23
2	W.L. PRELIM. REV. #2	11/15/23

PRELIMINARY ENGINEERING

FOR

CAR WASH FACILITY
 1492 W. OGDEN AVE.
 NAPERVILLE, IL 60540

DESIGNED BY: M.J.C.
 DRAWN BY: K.S.B.
 DATE: 06/09/2023
 PROJECT #: 1621

SHEET TITLE
GEOMETRIC PLAN

SHEET NUMBER
C-4

LEGEND

- PARKING STALLS IN EACH ROW
- PAINTED ACCESSIBILITY SYMBOL
- PROPOSED 6" CONCRETE BARRIER CURB
- PROPOSED SITE LIGHT (REFER TO ARCHITECTURE PLANS)
- DIRECTIONAL TRAFFIC ARROW
- PROPOSED BITUMINOUS PAVEMENT (STRUCTURAL NUMBER NO LESS THAN 2.5)
- PROPOSED CONCRETE

GENERAL NOTES:

- ALL DIMENSIONS ARE FROM FACE OF CURB, EDGE OF PAVEMENT, FACE OF BUILDING OR PERPENDICULAR TO PROPERTY LINE UNLESS OTHERWISE NOTED.
- PAVEMENT STRIPING DIMENSIONS ARE FROM CENTER OF STRIPE.
- ABBREVIATIONS:
 (BO-EC = DIMENSION BETWEEN BACK OF CURB & EDGE OF CONC.)
 BC = BACK OF CURB
 BL = BUILDING FACE FOUNDATION LINE
 CL = CENTER OF CURB OR CENTER LINE
 D, CURB = DEPRESSION CURB
 EC = EDGE OF CONCRETE
 EP = EDGE OF PAVEMENT
 FP = FACE OF CURB
 O.C. = ON CENTER
 PL = PROPERTY LINE
 R = RADIUS
 T, CURB = TRANSITION HEIGHT OF CURB
 TYP. = TYPICAL

PROPOSED TRAFFIC SIGN KEY:

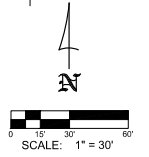
- PROPOSED TRAFFIC CONTROL SIGN
- DO NOT ENTER SIGN - BITUMINOUS REST SIGN (SIGN SIZE 30" x 30")
- ADA ONLY SIGNS (PER LOCAL ORDINANCE) - 18" x 24" R1-10 SIGN
- STOP SIGN - 24" x 24" WHITE STOP BAR - STANDARD R1-1 SIGN (SIGN SIZE 30" x 30")

PARKING SUMMARY:

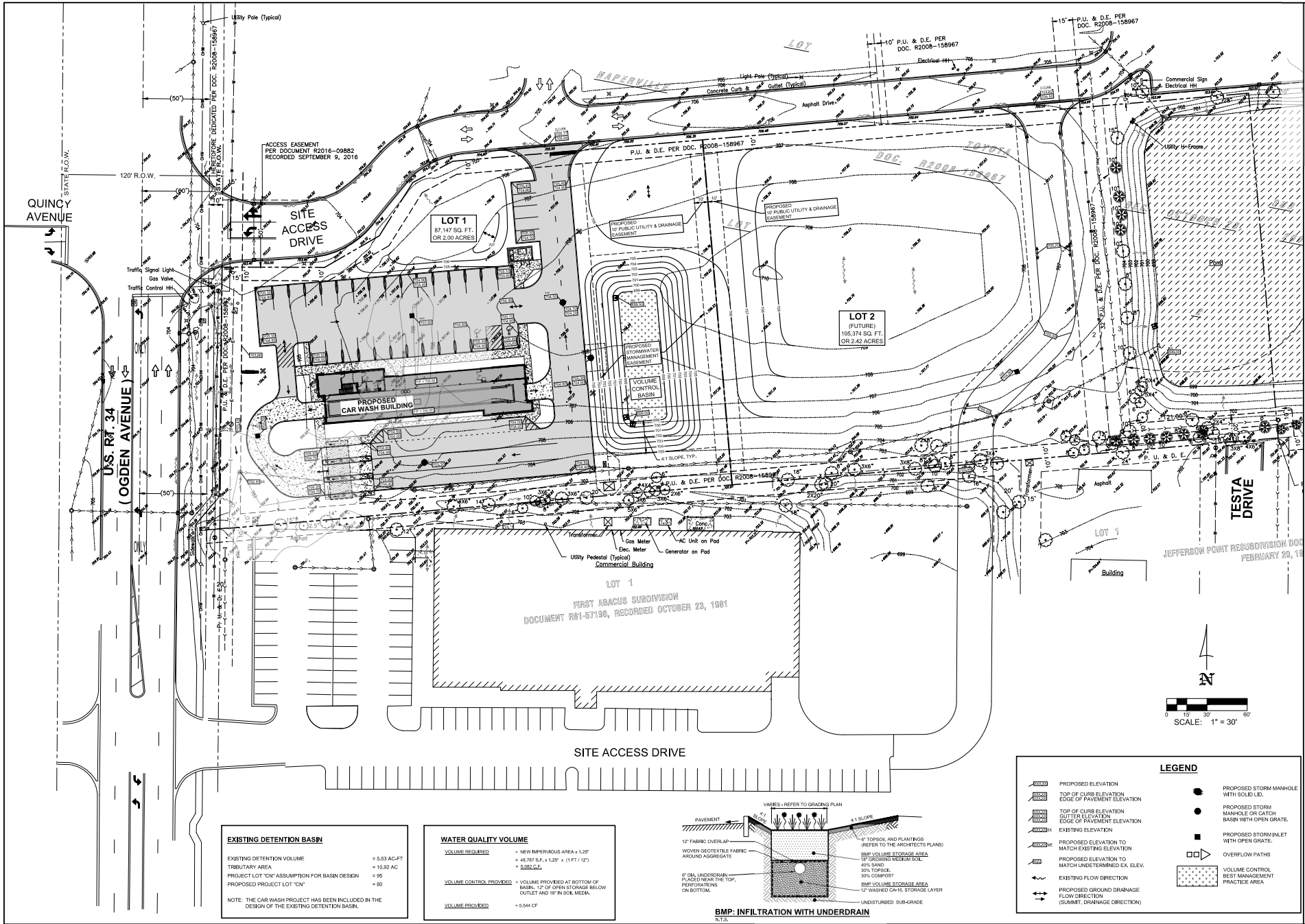
EMPLOYEE STALLS:	5
ADA/VACUUM STALLS:	2
VACUUM STALLS:	26
TOTAL STALLS:	33

PROPOSED IMPROVEMENT COVERAGE

LOT #:	TOTAL AREA	IMPERVIOUS AREA	PERVIOUS AREA	PERVIOUS AREA (%)
LOT # 1:	2.00 AC.	0.88 AC. (44.00%)	1.12 AC. (56.00%)	
LOT # 2:	2.42 AC.	0.17 AC. (7.02%)	1.88 AC. (77.69%)	0.37 AC. (15.29%)



JEFFERSON POINT REBUBDIVISION DOC. FEBRUARY 20, 19



PREPARED FOR
CAR WASH Pro Designers
Design & Construction

PREPARED BY
TERRA
600 Busse Highway
Park Ridge, IL 60068
Tel: 847/958-4301
Fax: 847/958-4301

REVISIONS

NO.	DESCRIPTION	DATE
1	W.L. PRELIM REV. #1	10/15/12
2	W.L. PRELIM REV. #2	11/15/12

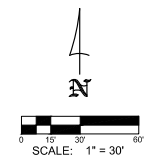
FOR
CAR WASH FACILITY
1492 W. OGDEN AVE.
NAPERVILLE, IL 60540

DESIGNED BY: M.J.C.
DRAWN BY: K.S.A.
DATE: 06/09/2013
PROJECT #: 1021

SHEET TITLE
GRADING PLAN
SHEET NUMBER
C-5

LEGEND

	PROPOSED ELEVATION		PROPOSED STORM MANHOLE WITH SOLID LID.
	TOP OF CURB ELEVATION		PROPOSED STORM MANHOLE OR CATCH BASIN WITH OPEN GRATE.
	EDGE OF PAVEMENT ELEVATION		PROPOSED STORM INLET WITH OPEN GRATE.
	TOP OF CURB ELEVATION		OVERFLOW PATHS
	GUTTER ELEVATION		VOLUME CONTROL BEST MANAGEMENT PRACTICE AREA
	EDGE OF PAVEMENT ELEVATION		
	EXISTING ELEVATION		
	PROPOSED ELEVATION TO MATCH EXISTING ELEVATION		
	PROPOSED ELEVATION TO MATCH UNDETERMINED EX. ELEV.		
	EXISTING FLOW DIRECTION		
	PROPOSED GROUND DRAINAGE FLOW DIRECTION (SUMMIT, DRAINAGE DIRECTION)		



LOT 1
87,147 SQ. FT.
OR 2.00 ACRES

LOT 2
(FUTURE)
105,374 SQ. FT.
OR 2.42 ACRES

LOT 1
FIRST ARACUS SUBDIVISION
DOCUMENT 761-57190, RECORDED OCTOBER 23, 1981

JEFFERSON POINT RESUBDIVISION DOC. 82008-158967
FEBRUARY 20, 1981

ACCESS EASEMENT
PER DOCUMENT R2016-09882
RECORDED SEPTEMBER 9, 2016

P.U. & D.E. PER DOC. R2008-158967

10' P.U. & D.E. PER DOC. R2008-158967

15' P.U. & D.E. PER DOC. R2008-158967

QUINCY AVENUE

US Rt. 34
(OGDEN AVENUE)

SITE ACCESS DRIVE

TESTA DRIVE

Utility Pole (Typical)

Light Pole (Typical)
Concrete Curb & Outlet (Typical)
Asphalt Drive

Commercial Sign Electrical Hub

Traffic Signal Light
Gas Valve
Control Hub

PROPOSED STORMWATER MANAGEMENT EASEMENT

VOLUME CONTROL BASIN

4:1 SLOPE, TYP.

P.U. & D.E. PER DOC. R2008-158967

Gas Meter
Elec. Meter
Generator on Pod

Utility Pedestal (Typical)
Commercial Building

LOT 1

FIRST ARACUS SUBDIVISION
DOCUMENT 761-57190, RECORDED OCTOBER 23, 1981

LOT 1

Building

LOT 1

LOT 1

LOT 1

LOT 1

LOT 1

LOT 1

LOT 1

LOT 1

LOT 1

LOT 1

LOT 1

LOT 1

