

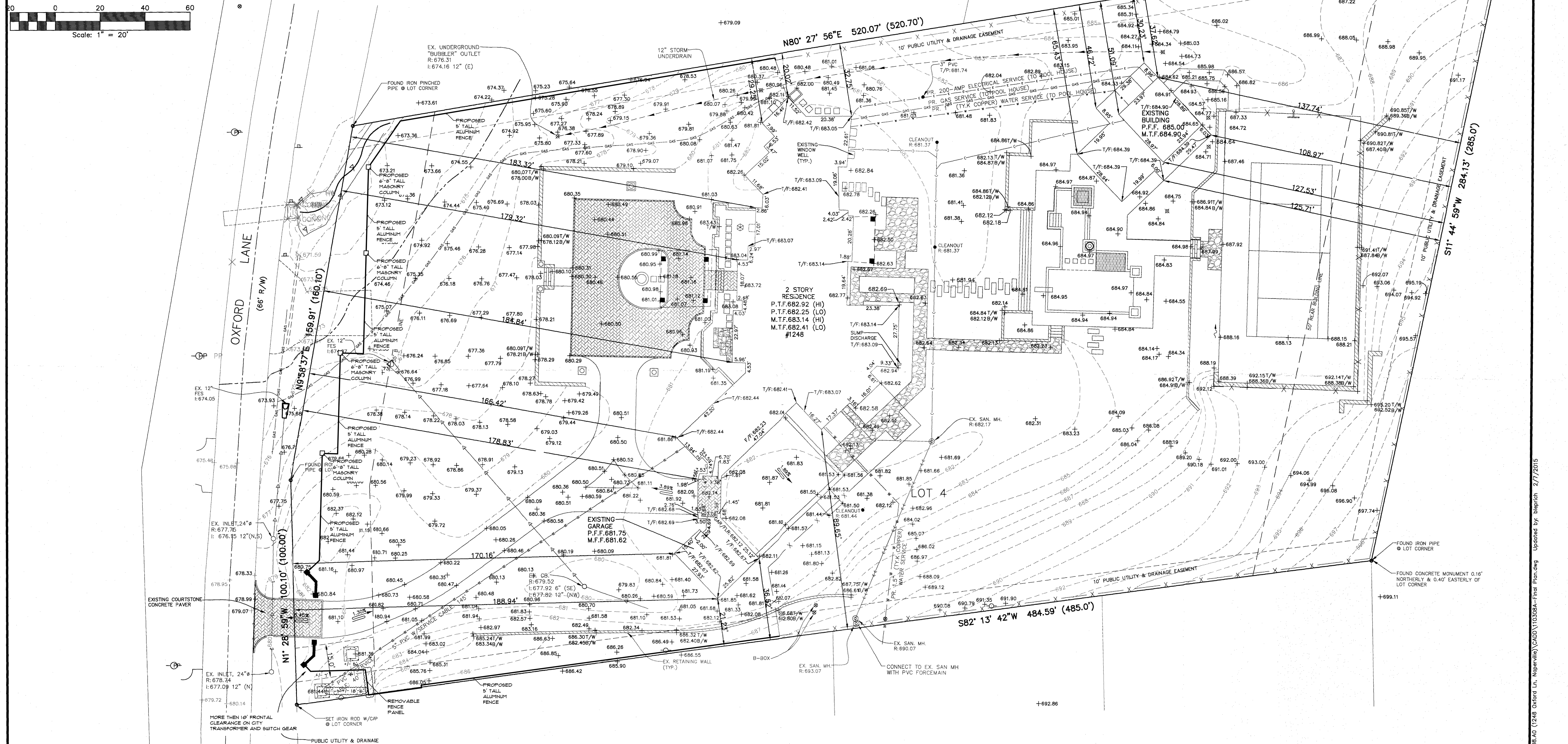
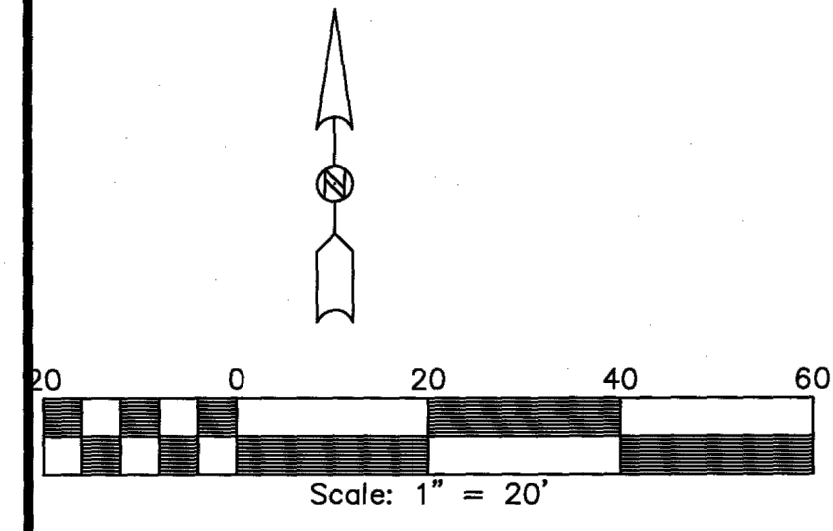
FINAL GRADING PLAN

LOT 4 IN BLOCK 2 IN ARTHUR T. MCINTOSH AND COMPANY'S RIVER GROVE SUBDIVISION, BEING A SUBDIVISION IN PART OF SECTIONS 29 AND 30, TOWNSHIP 38 NORTH, RANGE 10 EAST OF THE THIRD PRINCIPAL MERIDIAN, ACCORDING TO THE PLAT THEREOF RECORDED JANUARY 14, 1926 AS DOCUMENT NO. 206178, IN DUPAGE COUNTY, ILLINOIS.

COMMONLY KNOWN AS: 1248 OXFORD LANE, NAPERVILLE, ILLINOIS

LOT AREA: 131,442.29 S.F OR 3.02 ACRES (MEAS.)

P.I.N.: 08-29-104-005



BENCHMARKS:

REFERENCE: DUPAGE COUNTY BENCHMARK #130002 (NGVD 1929)
BRONZE DISK IN WING WALL OF BRIDGE OVER THE WEST BRANCH OF THE DUPAGE RIVER ON THE SOUTH SIDE OF 75TH STREET
ELEVATION = 664.19'

SITE BENCHMARK #1
TOP OF IRON PIPE AT THE NORTHWEST CORNER OF THE SUBJECT SITE.
ELEVATION = 672.11'

SITE BENCHMARK #2
TOP OF IRON PIPE AT THE SOUTHWEST CORNER OF THE SUBJECT SITE.
ELEVATION = 680.62'

It's smart It's free It's the law

Call before you dig
800.892.0123

ERA JOB #: 110308A
PREPARED FOR: MUELLNER CONSTRUCTION, INC.
G:\PROJECTS\MUELLNER CONSTRUCTION INC\110308A\CADD\110308A-FINAL PLAN.DWG

ENGINEERING RESOURCE ASSOCIATES, INC.
CONSULTING ENGINEERS, SCIENTISTS & SURVEYORS

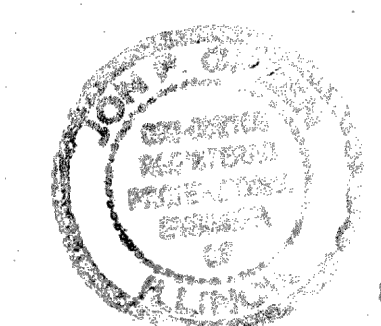
35701 WEST AVENUE, SUITE 150
NAPERVILLE, ILLINOIS 60555
PHONE (630) 393-3060
FAX (630) 393-2152

3002 CROSSING COURT
CHAMPAIGN, ILLINOIS 61822
PHONE (217) 351-6268
FAX (217) 355-1902

| | |
|--------------|----|
| DRAWN BY: | BL |
| CHECKED BY: | SB |
| APPROVED BY: | JG |

CITY OF NAPERVILLE PROJECT # 12-2366

FINAL GRADING PLAN REVISED: FEBRUARY 9, 2015
FINAL GRADING PLAN: NOVEMBER 13, 2014



I, JON P. GREEN, HEREBY VERIFY THAT I HAVE MEASURED THE ABOVE PROPERTY AND THAT THE PLAN HEREON DRAWN IS A CORRECT REPRESENTATION OF SAID CONDITIONS. DATED AT WARRENVILLE, IL. THIS 13TH DAY OF NOVEMBER A.D. 2014

REGISTERED PROFESSIONAL ENGINEER NO. 062-052108
PROFESSIONAL DESIGN FIRM NUMBER: 184.001186

G:\PROJECTS\MueLLner Construction Inc\110308A\110308A-Final Plan.dwg Updated by: bierlich 2/7/2015