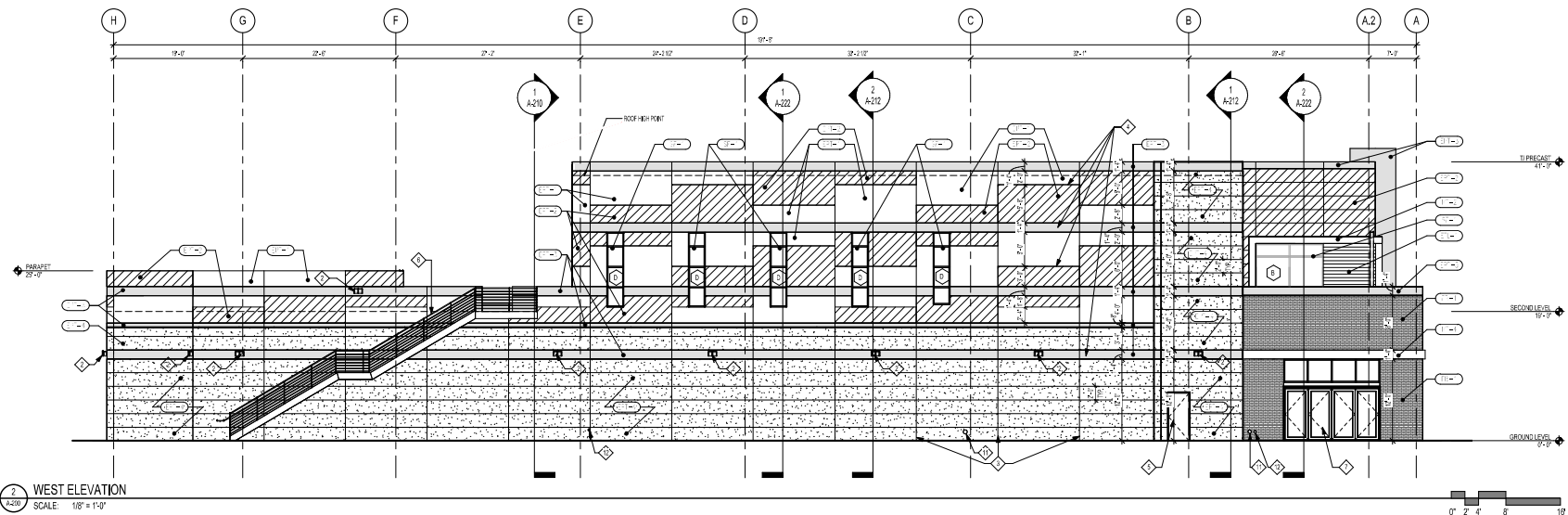
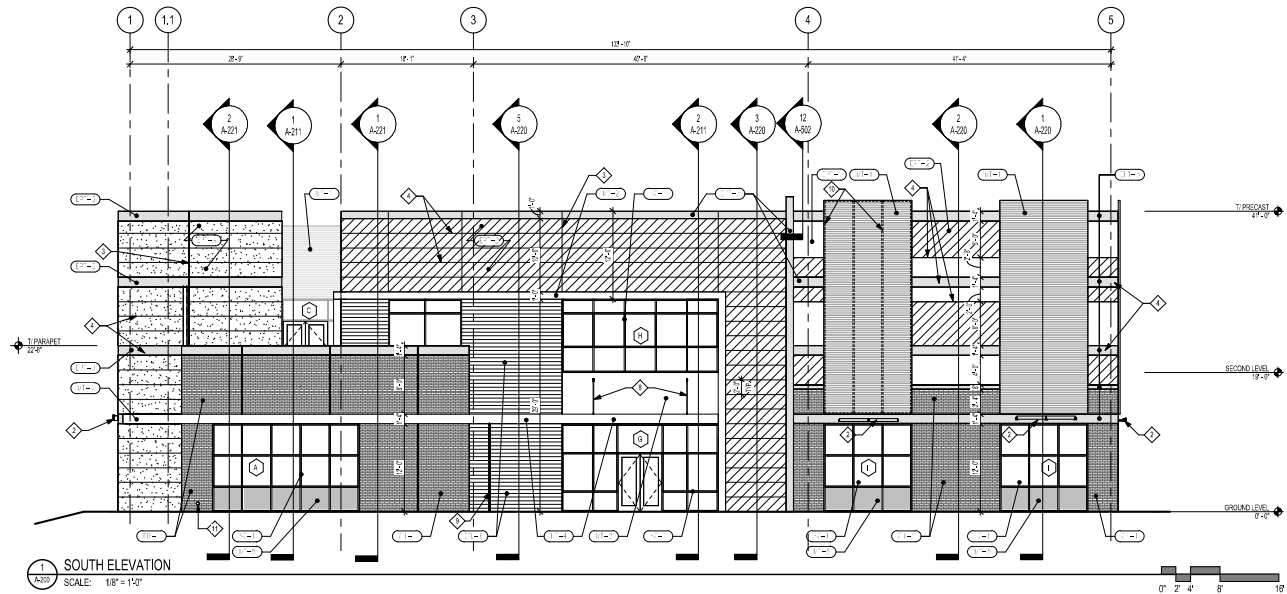


EXTERIOR MATERIAL LEGEND	
ITEM TAG	DESCRIPTION
(C-1)	PRECAST PANEL PAINT
(C-2)	PRECAST PANEL PAINT
(C-3)	PRECAST PANEL PAINT
(C-4)	PRECAST PANEL PAINT
(C-5)	THIN BRICK INTEGRAL TO PRECAST PANEL
(C-6)	CORRUGATED METAL PANEL
(C-7)	METAL COPING AND TRIM
(C-8)	METAL CANOPY
(C-9)	METAL INFILL PANEL
(C-10)	ALUMINUM STOREFRONT
(C-11)	PREFINISHED ALUMINUM SOFFIT PANEL
(C-12)	NON COMBUSTIBLE CEMENTITIOUS SIDING
(C-13)	PORCELAIN TILE

SEE SHEET G-007 FOR MATERIAL SPECIFICATIONS



- KEY NOTES**
- ◊ AREA OF SIGNAGE BY OTHERS - SEE ELEC. DRAWINGS FOR POWER
  - ◊ WALL MOUNTED LIGHT FIXTURE
  - ◊ PRECAST PANEL JOINT
  - ◊ HORIZONTAL PRECAST REVEAL TIP
  - ◊ PAINTED FLUSH DOOR
  - ◊ PAINTED STEEL RAILING PAINT WITH 3 PART HIGH PERFORMANCE COATING
  - ◊ BIFOLD DOORS WITH AIR CURTAIN
  - ◊ STEEL CANOPY TENSION RODS, SEE STRUCT.
  - ◊ CHAIN RAIL LEADER
  - ◊ METAL TUBE FRAME BEHIND CORRUGATED METAL PANELS, TYP.
  - ◊ OVER FLOW ROOF DRAIN LAMBS TONGUE
  - ◊ NON FREEZING HOSE BIB
  - ◊ FIRE DEPARTMENT CONNECTION
  - ◊ GENERATOR CONNECTION & TRANSOCKET
  - ◊ GAS METER



PROJECT NO: \_\_\_\_\_ DESIGNER: \_\_\_\_\_  
 NO: \_\_\_\_\_ BUILDER POSE: \_\_\_\_\_ DATE: \_\_\_\_\_

**OKW**  
Architects

OKW  
Architects  
600 West Jackson Blvd  
Chicago, IL 60604  
T 312.786.7700  
F 312.786.7777  
www.okwarchitects.com

**WHIRLYBALL**  
 3103 ODYSSEY COURT  
 NAPERVILLE, IL 60563

**EXTERIOR ELEVATIONS**

DRAWN BY: \_\_\_\_\_ CHECKED: \_\_\_\_\_  
 DATE: 07/27/2018 DESIGNED: \_\_\_\_\_  
 PROJECT NO: 1070 PRODUCTION: \_\_\_\_\_  
 [1/8" = 1'-0"]

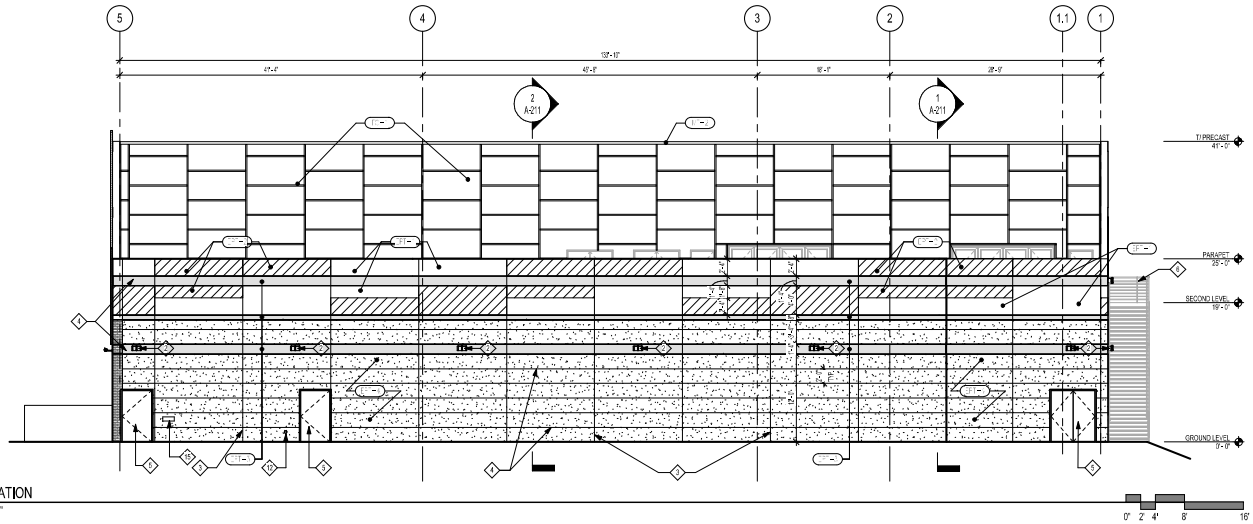
**A-200**

EXHIBIT D

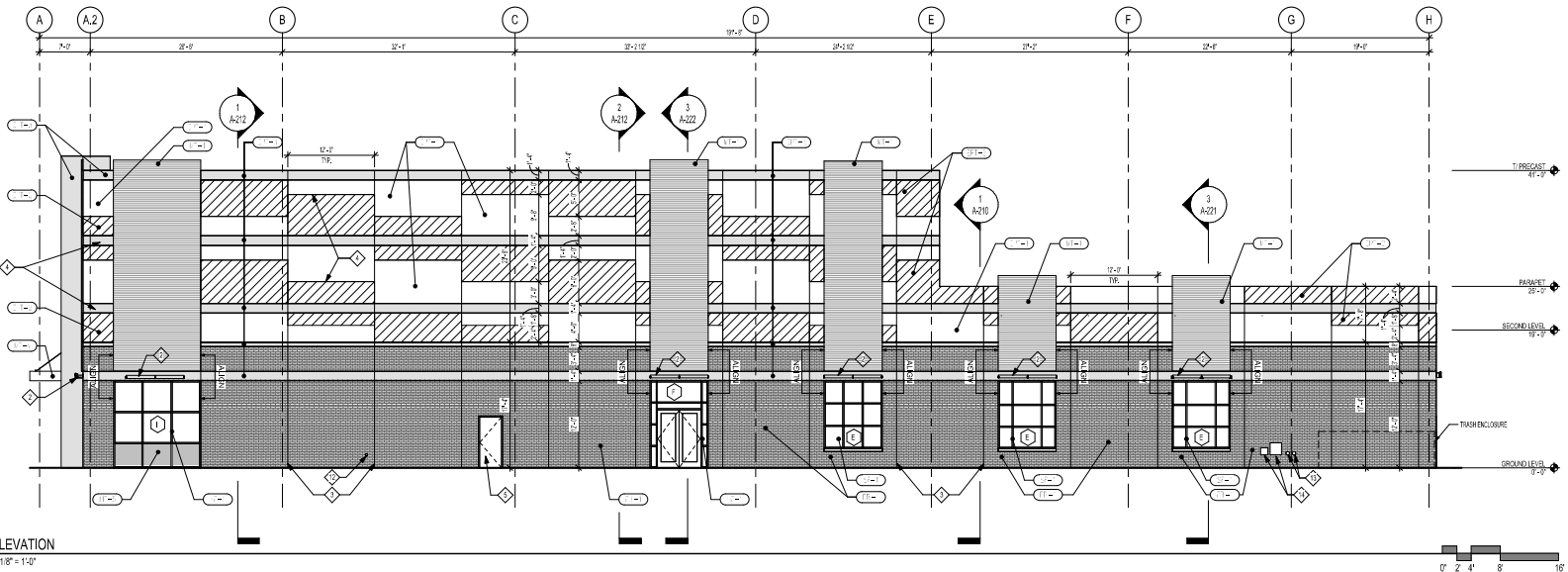
EXTERIOR MATERIAL LEGEND	
ITEM TAG	DESCRIPTION
(1)-(2)	PRECAST PANEL PAINT
(3)-(4)	PRECAST PANEL PAINT
(5)-(6)	PRECAST PANEL PAINT
(7)-(8)	PRECAST PANEL PAINT
(9)-(10)	THIN BRICK INTEGRAL TO PRECAST PANEL
(11)-(12)	CORRUGATED METAL PANEL
(13)-(14)	METAL COPING AND TRIM
(15)-(16)	METAL CANOPY
(17)-(18)	METAL INFILL PANEL
(19)-(20)	ALUMINUM STOREFRONT
(21)-(22)	PREFINISHED ALUMINUM SOFFIT PANEL
(23)-(24)	NON COMBUSTIBLE CEMENTITIOUS SIDING
(25)-(26)	PORCELAIN TILE

SEE SHEET G-007 FOR MATERIAL SPECIFICATIONS

2 NORTH ELEVATION  
SCALE: 1/8" = 1'-0"



1 EAST ELEVATION  
SCALE: 1/8" = 1'-0"



- KEY NOTES**
- ◊ AREA OF SIGNAGE BY OTHERS--SEE ELEC. DRAWINGS FOR POWER
  - ◊ WALL MOUNTED LIGHT FIXTURE
  - ◊ PRECAST PANEL JOINT
  - ◊ HORIZONTAL PRECAST REVEAL TYP.
  - ◊ PAINTED FLUSH DOOR
  - ◊ PAINTED STEEL SIKING PAINT WITH 3 PART HIGH PERFORMANCE COATING
  - ◊ BIFOLD DOORS WITH AIR CURTAIN
  - ◊ STEEL CANOPY TENSION ROOFS SEE STRUCT.
  - ◊ CHAIN RAIN LEADER
  - ◊ 7" METAL TUBE FRAME BEHIND CORRUGATED METAL PANELS TYP.
  - ◊ OVER FLOW SCOFF DRAIN 'LAMBS TONGUE'
  - ◊ NON FREEZING HOSE BIB
  - ◊ FIRE DEPARTMENT CONNECTION
  - ◊ GENERATOR CONNECTION & TRANSOCKET
  - ◊ GAS METER

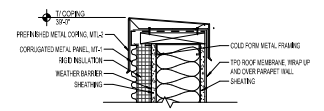


PROJECT NO. \_\_\_\_\_ DATE \_\_\_\_\_  
 TITLE \_\_\_\_\_ REVISION NO. \_\_\_\_\_  
**OKW**  
 Architects  
 OKW Architects  
 650 West Jackson Blvd  
 Chicago, IL 60601  
 T 312.780.7700  
 F 312.780.7777  
 www.okwarchitects.com

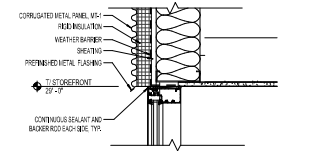
**WHIRLYBALL**  
 3103 ODYSSEY COURT  
 NAPERVILLE, IL 60563

**EXTERIOR ELEVATIONS**

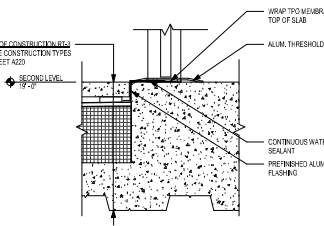
DATE: 07/27/2018  
 DRAWN BY: \_\_\_\_\_ CHECKED: \_\_\_\_\_  
 PROJECT NO. 19079  
**A-201**



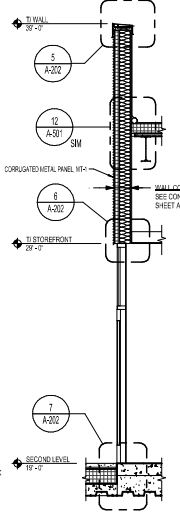
3 SECTION DETAIL @ CORRUGATED PANEL COPING  
SCALE: 1 1/2" = 1'-0"



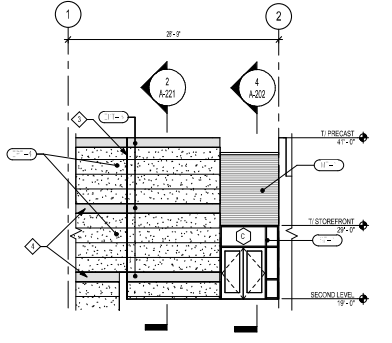
6 SECTION DETAIL @ WINDOW HEAD  
SCALE: 1 1/2" = 1'-0"



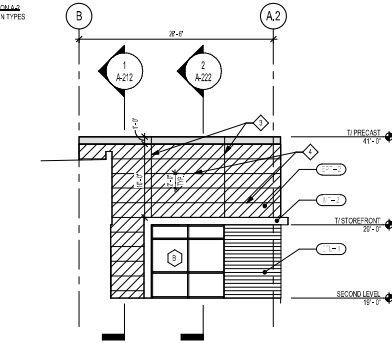
7 SECTION DETAIL @ DOOR SILL  
SCALE: 1 1/2" = 1'-0"



4 WALL SECTION @ CORRUGATED PANEL WALL  
SCALE: 3/8" = 1'-0"



2 PARTIAL SOUTH ELEVATION  
SCALE: 1/8" = 1'-0"

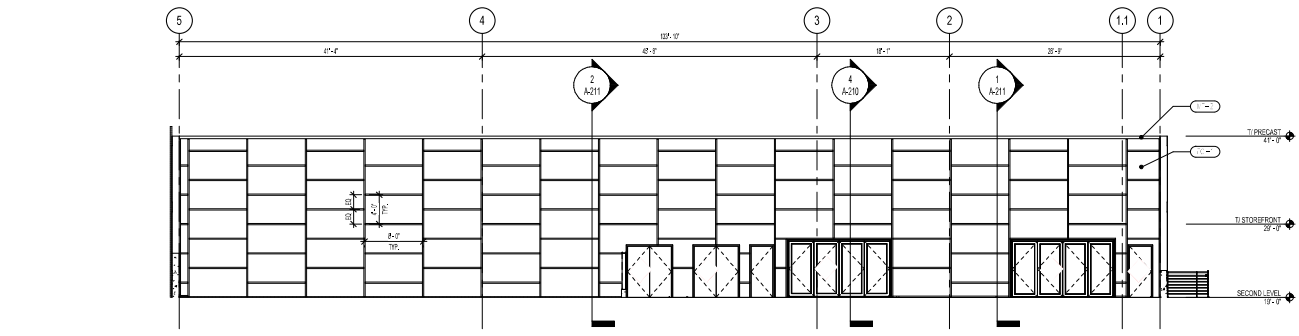


3 PARTIAL WEST ELEVATION  
SCALE: 1/8" = 1'-0"

EXTERIOR MATERIAL LEGEND	
ITEM TAG	DESCRIPTION
(M1-1)	PRECAST PANEL PAINT
(M1-2)	PRECAST PANEL PAINT
(M1-3)	PRECAST PANEL PAINT
(M1-4)	PRECAST PANEL PAINT
(M1-5)	PRECAST PANEL PAINT
(M1-6)	THIN BRICK INTEGRAL TO PRECAST PANEL
(M1-7)	CORRUGATED METAL PANEL
(M1-8)	METAL COPING AND TRIM
(M1-9)	METAL CANOPY
(M1-10)	METAL INFILL PANEL
(M1-11)	ALUMINUM STOREFRONT
(M1-12)	PRE-FINISHED ALUMINUM SOFFIT PANEL
(M1-13)	NON COMBUSTIBLE CEMENTITIOUS SIDING
(M1-14)	PORCELAIN TILE

SEE SHEET G-007 FOR MATERIAL SPECIFICATIONS

KEY NOTES	
◇	AREA OF STORAGE BY OTHERS - SEE ELEC. DRAWINGS FOR POWER
◇	WALL MOUNTED LIGHT FIXTURE
◇	PRECAST PANEL JOINT
◇	HORIZONTAL PRECAST REVEAL TYP.
◇	PAINTED FLUSH DOOR
◇	PAINTED STEEL BALDING PAINT WITH 3 PART HIGH PERFORMANCE COATING
◇	W/POOD DOORS WITH AIR CURTAIN
◇	STEEL CANOPY TENSION RODS, SEE STRUCT.
◇	CHAIN RAIN LEADER
◇	METAL TUBE FRAME BEHIND CORRUGATED METAL PANELS, TYP.
◇	OVER FLOW ROOF DRAIN "LAMBS TONGUE"
◇	NON-FREEDING HOSE BIB
◇	FIRE DEPARTMENT CONNECTION
◇	GENERATOR CONNECTION & TRANSOCKET
◇	GA5 METER



1 PARTIAL NORTH ELEVATION  
SCALE: 1/8" = 1'-0"



PROJECT NO.	ISSUED FOR:	REVISED DATE
1001		

**OKW**  
Architects

OKW  
Architects  
800 West Jackson Blvd  
Chicago, IL 60601  
T 312.786.7700  
F 312.786.7771  
www.okwarchitects.com

**WHIRLYBALL**

3103 ODYSSEY COURT  
NAPERVILLE, IL 60563

**EXTERIOR ELEVATIONS + DETAILS**

DRAWN BY: \_\_\_\_\_ CHECKED BY: \_\_\_\_\_

DATE: 07/27/2018  
PROJECT NO.: 1001  
SHEET NO.: A-202