

THE DESIGN AND DETAILS DISCLOSED HEREIN ARE THE EXCLUSIVE PROPERTY OF RODGER W. BAKER, AIA AND SHALL NOT BE COPIED OR REPRODUCED IN WHOLE OR IN PART WITHOUT HIS PRIOR WRITTEN CONSENT.
 RODGER W. BAKER, AIA

EXTERIOR FINISH SCHEDULE						
EXTERIOR PAINT	DESCRIPTION	FINISH NO.	MFGR.	MFGR. NO.	COLOR	REMARKS
BUILDING WALLS	PAINT *	(A)	SHERWIN WILLIAMS	#7533	KHAKI SHADE	PAINT WITH TWO COATS ACRYLIC LATEX (SATIN)
BUILDING TRIM	PAINT *	(B)	SHERWIN WILLIAMS	#6126	FREDDY'S PEARL	PAINT WITH TWO COATS ACRYLIC LATEX (SATIN)
BOLLARD	PAINT	(P3)	SHERWIN WILLIAMS	#17-572	FREDDY'S RED	PAINT WITH TWO COATS HIGH PERFORMANCE ACRYLIC (GLOSS)
* NOTE: ALL EXTERIOR INSULATED FINISH SYSTEM (E.I.F.S.) IS PRE-MIXED WITH SHERWIN-WILLIAMS COLORS AS SPEC'D. ABOVE. NO PAINTING OF BUILDING E.I.F.S. IS REQUIRED.						
EXT. BRICK & EIFS	DESCRIPTION	FINISH NO.	MFGR.	INTERSTATE BRICK SHANNON PERRY, PH. (517) 922-8915. SHANNON.PERRY@INTERSTATEBRICK.COM	COLOR & TEXTURE	REMARKS
BUILDING BRICK (OPT. #1)	BRICK MODULAR	(BRICK-1)	INTERSTATE BRICK-UTAH		MOUNTAIN RED	GROUT COLOR - GRAY MODULAR & THIN - RUMBLED EXTRA CHARGE
	THIN BRICK	(BRICK-2)	INTERSTATE BRICK-UTAH			GROUT COLOR - GRAY MODULAR & THIN - RUMBLED EXTRA CHARGE
BUILDING BRICK (OPT. #2)	BRICK MODULAR	(BRICK-1)	THE LAKEWOOD BRICK COMPANY	ACME BRICK CO. ATTY: BILLY WHITE P:316-941-3594	WELLSHIRE	GROUT COLOR - GRAY MODULAR & THIN - MADE RUMBLED
	THIN BRICK (OPT. #2)	(BRICK-2)	THE LAKEWOOD BRICK COMPANY			GROUT COLOR - GRAY MODULAR & THIN - MADE RUMBLED
EIFS WALLS		(EIFS-1)			SANDBLAST	MIX SW#7533 W/ FIN. COAT
EIFS CORNICE		(EIFS-2)			SANDBLAST	MIX SW#6126 W/ FIN. COAT
METAL COPING	DESCRIPTION	FINISH NO.			COLOR	REMARKS
BUILDING COPING	COPING	(MTL-1)	DUROLAST		BRITE RED	2 PC COMPRESSION COPING CAP. SLOPE TOWARDS ROOF.

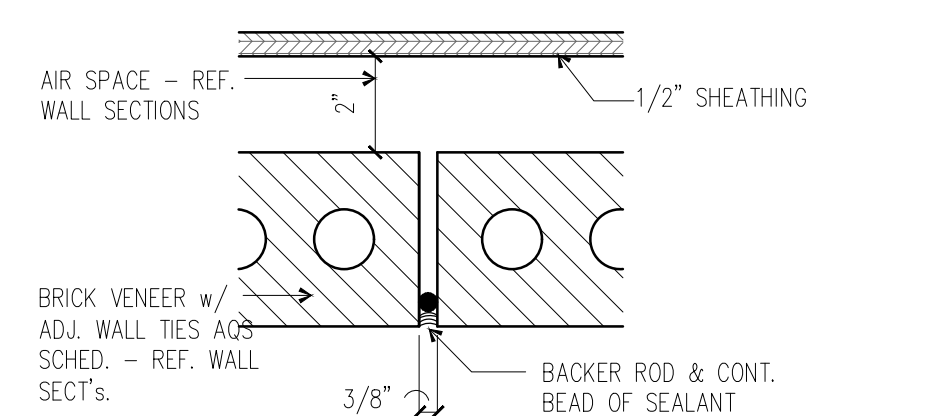
GENERAL NOTES:

SIGNS SHOWN ON THESE ELEVATIONS ARE FOR CODE REVIEW PURPOSES ONLY. THESE SIGN ELEVATIONS ARE NOT TO BE USED AS OR CONSTRUED AS SHOP DRAWINGS FOR SIGN CONSTRUCTION. SIGN SHOP DRAWINGS ARE PRODUCED BY THE SIGN MANUFACTURER FOR REVIEW AND APPROVAL BY THE OWNER.

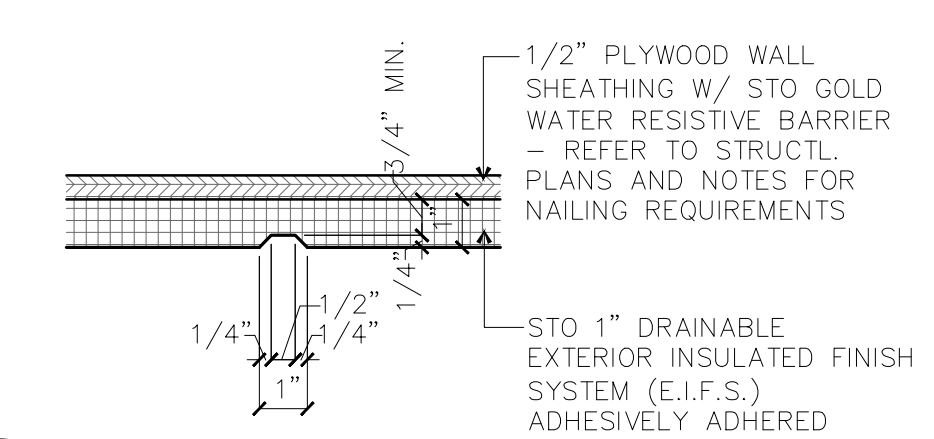
NOTE TO AWNING MANUFACTURER AND AWNING INSTALLER. AWNING FRAME TO BE ENGINEERED FOR APPROVAL BY LOCAL CODE AND DESIGNED TO MISS ALL BUILDING PROTRUSIONS NOT SHOWN ON PLANS.

ELEVATION KEY NOTES:

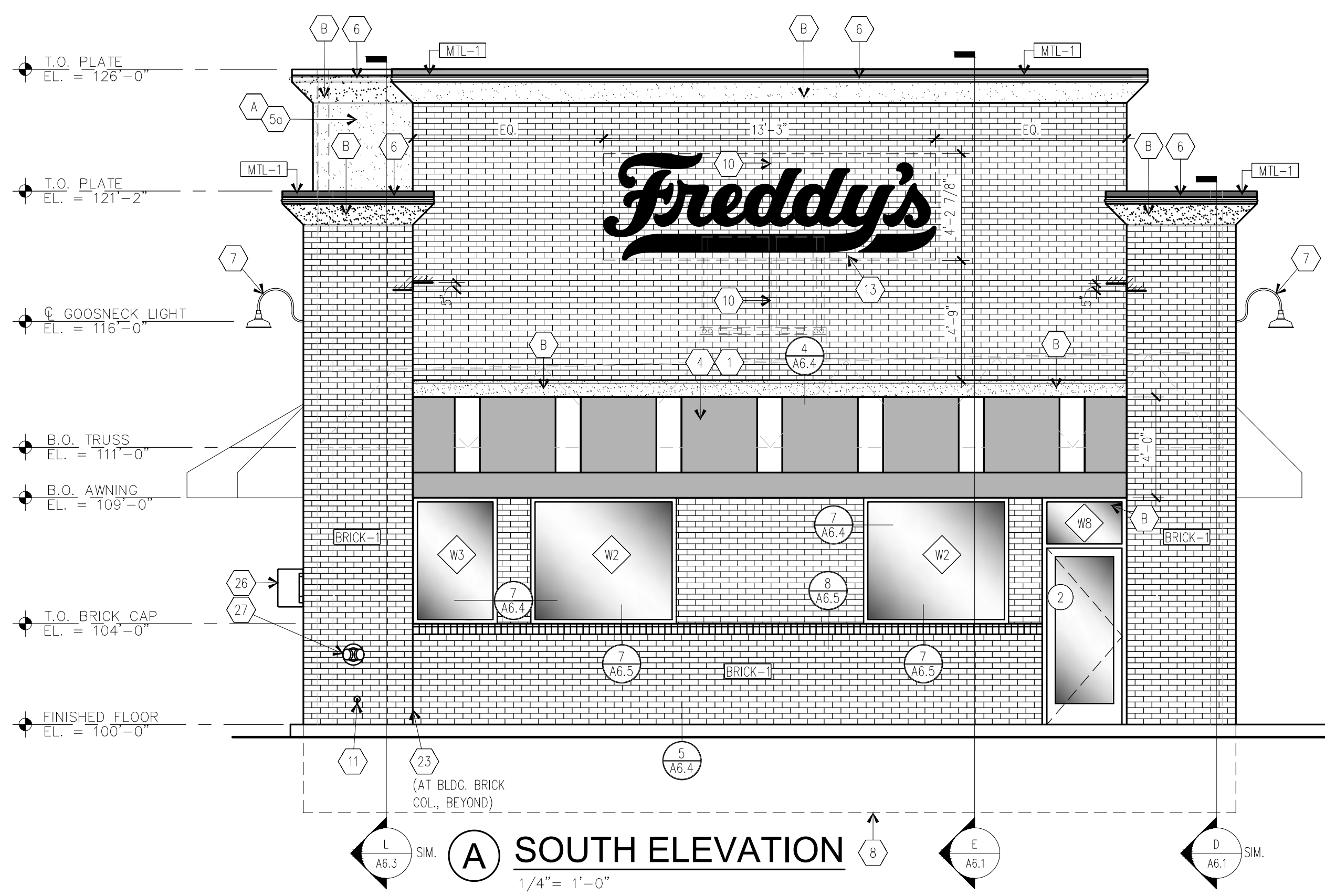
- (1) (2)-TUBE, STRIP LED FIXTURES WITH CLEAR LENS COVERS TO BACK LIGHT AWNINGS, TYP. SUPPLIED BY OWNER. WIRED & INSTALLED BY ELEC. CONTR.
- (2) OVERFLOW DRAIN WITH LAMBS TONGUE
- (3) HOLLOW METAL EXT DR. REF. DOOR SCHED.
- (4) EXTERIOR VINYL AWNING & ALUM FRAME BY OWNER AND AWNING MANUF. TYP. REF. AWNING COLOR KEY SHT'S A3 & A4
- (5a) STO 1 1/2" DRAINABLE EXTERIOR INSULATED FINISH SYSTEM (E.I.F.S.) ADHESIVELY ADHERED "SAND PEBBLE FIN."
- (5b) STO 2 1/2" DRAINABLE EXTERIOR INSULATED FINISH SYSTEM (E.I.F.S.) ADHESIVELY ADHERED "SAND PEBBLE FIN."
- (6) LED STRIP LIGHTING BY SIGN MFGR. TYP.
- (7) GOOSNECK LIGHT FIXTURE "RED"
- (8) CONCRETE FOUNDATION REFER TO STRUCTL. PLANS FOR SIZE AND DETAILS
- (9) NOT USED
- (10) EIFS CONTROL JOINT REF. DETAIL 4/A3
- (11) FROST-PROOF HOSE BIB, REF. PLUMBING DRWS.
- (12) DIAMOND TREAD PLATE, REF. DOOR SCHEDULE
- (13) SIGNAGE BY OWNER - INSTALLATION BY SIGNAGE MANUF., ELEC. CONNECTIONS BY G.C.
- (14) NOT USED
- (15) WALL PACK LIGHT FIXTURE. ABOVE REAR DOOR - REF. ELEC. PLANS
- (16) GAS METER PTD. VERIFY LOC.
- (17) NOT USED
- (18) 4" CONC. FILLED PIPE BOLLARD. FREDDY'S RED
- (19) ILLUMINATED CHANNEL LETTERS BY SIGN MANUF. READY ACCESS MODEL AA300 CURTAIN - 275 PASS-THRU AIR CURTAIN SYSTEM W/ STATUARY BRONZE FIN. ELECTRICAL CONTRACTOR TO VERIFY ELECTRICAL REQ'MS. SEE MANUFACTURER FOR APPROPRIATE AIR CURTAIN CONFIGURATION BASED ON GEOGRAPHY.
- (20) READY ACCESS MODEL 275 WINDOW/ MANUAL SINGLE PANEL SLIDER, 48"W x 60" H. R.O. (INCL. AIR CURTAIN ABOVE). MANUAL OPEN/ ELECTRONIC RELEASE - OPENS ON SIDE THE CAR APPROACHES. BRONZE FINISH - PROVIDED BY & INSTALLED BY G.C.
- (21) RECESSED KNOX BOX
- (22) BRICK EXPANSION JOINT REF. DETAIL 3/A3
- (23) STEEL MESH HINGED GATE (W/LOCK) TO ENCLOSE BOTTOM OF ACCESS LADDER. (PAINT TO MATCH EIFS).
- (24) ELECTRICAL CT CABINET & DISCONNECT - PTD. VERIFY LOCATION
- (25) FREDDY'S PEDESTRIAN CROSSING SIGN. BOTTOM OF SIGN @ 56" A.F.F.
- (26) SIAMSE FIRE DEPARTMENT CONNECTION.



3 BRICK CONTROL JOINT
 3" = 1'-0"
 MARKED CJ ON EXTERIOR ELEVATIONS SHEETS A3 & A4

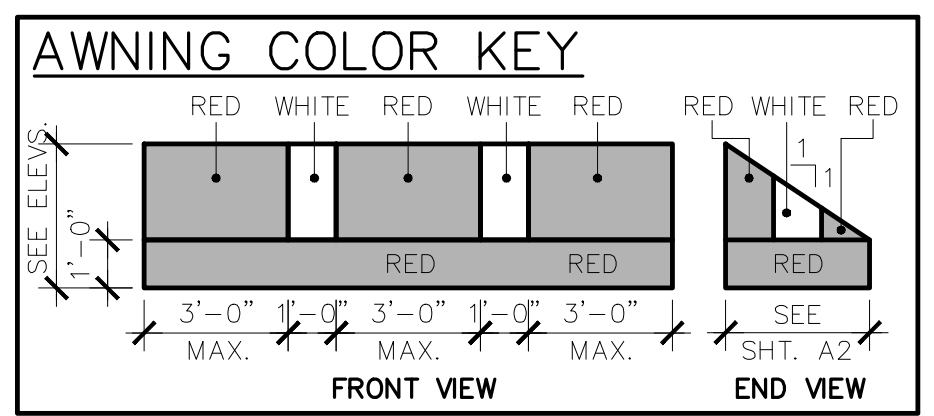


4 EIFS CONTROL JOINT
 3" = 1'-0"
 MARKED CJ ON EXTERIOR ELEVATIONS SHEETS A3 & A4



A SOUTH ELEVATION
 1/4" = 1'-0"

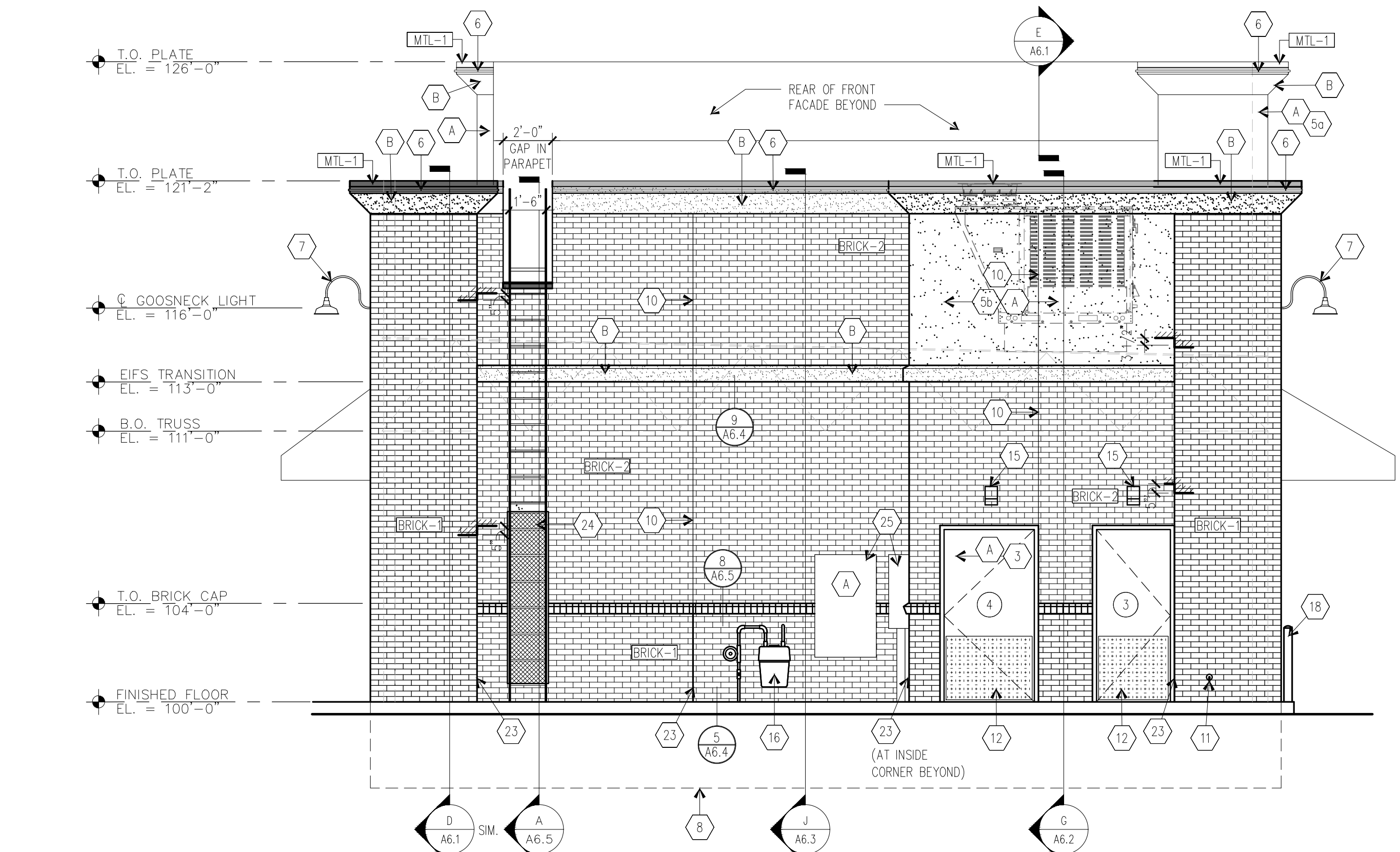
SIGNAGE AREA: SOUTH ELEVATION
 FREDDY'S = 55.5 SQ.FT.
 TOTAL = 55.5 SQ.FT.
 TOTAL SIGNAGE ALLOWED IS 1.5 SQ.FT. OF SIGNAGE PER FOOT OF FACADE LENGTH



NOTE TO AWNING MANUFACTURER AND AWNING INSTALLER. AWNING FRAME TO BE ENGINEERED FOR APPROVAL BY LOCAL CODE AND DESIGNED TO MISS ALL BUILDING PROTRUSIONS NOT SHOWN ON PLANS.

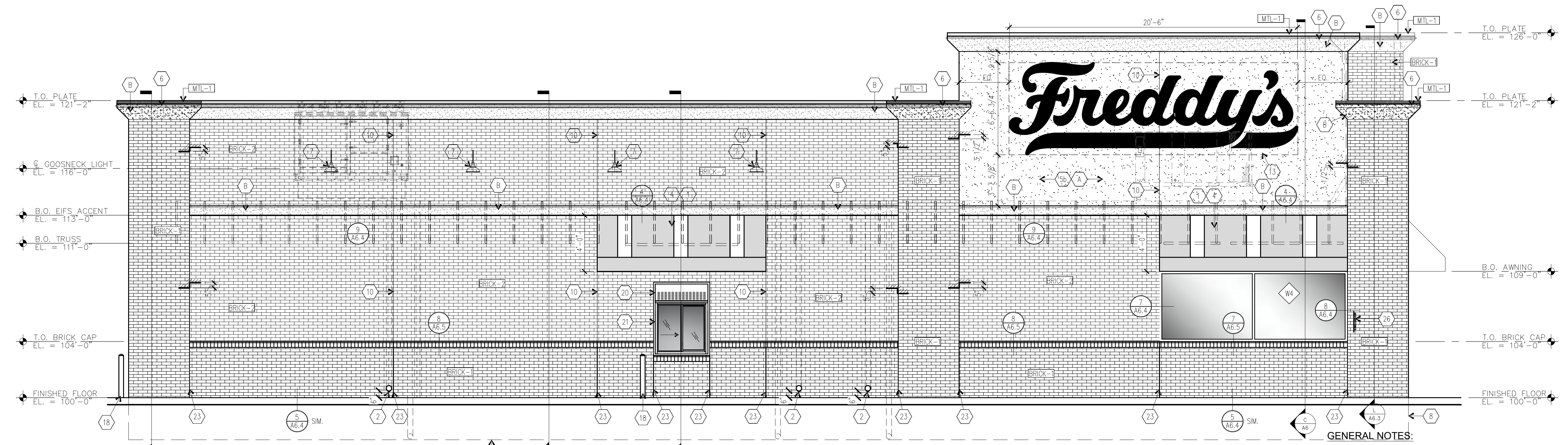
CAULKING COLOR NOTE:
 - AT EIFS / BRICK - MATCH EIFS
 - AT BRICK / BRICK - MATCH BRICK
 - AT EIFS / EIFS - MATCH EIFS
 - AT EIFS / STOREFRONT - MATCH DARK BRONZE FRAME

FINISH MATERIAL CALCULATIONS: SOUTH ELEVATION	FINISH MATERIAL CALCULATIONS: NORTH ELEVATION
BUILDING MATERIALS AREA -	BUILDING MATERIALS AREA -
GLASS WDW'S = 92 SQ.FT. (10%)	BRICK = 654 SQ.FT. (84%)
BRICK = 271 SQ.FT. (86%)	
ACCENT MATERIALS AREA -	ACCENT MATERIALS AREA -
EIFS = 33 SQ.FT. (4%)	EIFS = 122 SQ.FT. (16%)
TOTAL WALL AREA = 923 SQ.FT. (100%)	TOTAL WALL AREA = 776 SQ.FT. (100%)



B NORTH ELEVATION
 1/4" = 1'-0"

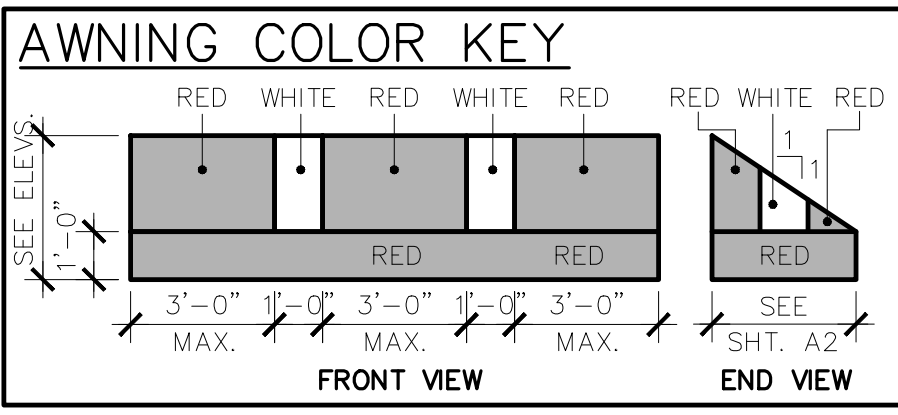
FREDDY'S FROZEN CUSTARD
 1967 GLACIER PARK AVE.
 NAPERVILLE, IL.



(A) WEST ELEVATION
 1/4" = 1'-0"

SIGNAGE AREA: WEST ELEVATION
 FREDDY'S = 136.0 SQ.FT.
 TOTAL = 136.0 SQ.FT.
 TOTAL SIGNAGE ALLOWED IS 1.5 SQ.FT. OF SIGNAGE PER FOOT OF FACADE LENGTH

SIGNAGE AREA: EAST ELEVATION
 FRIES = 7 SQ.FT.
 STEAKBURGERS = 14 SQ.FT.
 FROZEN CUSTARD = 20 SQ.FT.
 TOTAL = 41 SQ.FT.
 TOTAL SIGNAGE ALLOWED IS 1.5 SQ.FT. OF SIGNAGE PER FOOT OF FACADE LENGTH



NOTE TO AWNING MANUFACTURER AND AWNING INSTALLER: AWNING FRAME TO BE ENGINEERED FOR APPROVAL BY LOCAL CODE AND DESIGNED TO MISS ALL BUILDING PROTRUSIONS NOT SHOWN ON PLANS.

CAULKING COLOR NOTE:
 -AT EIFS / BRICK - MATCH EIFS
 -AT BRICK / BRICK - MATCH BRICK
 -AT EIFS / EIFS - MATCH EIFS
 -AT EIFS / STOREFRONT - MATCH DARK BRONZE FRAME

FINISH MATERIAL CALCULATIONS: WEST ELEVATION

BUILDING MATERIALS AREA -	GLASS WDW'S = 72 SQ.FT. (4%)	BRICK = 582 SQ.FT. (74%)
ACCENT MATERIALS AREA -	EIFS = 446 SQ.FT. (22%)	
TOTAL WALL AREA =	2,065 SQ.FT. (100%)	

FINISH MATERIAL CALCULATIONS: EAST ELEVATION

BUILDING MATERIALS AREA -	GLASS WDW'S = 217 SQ.FT. (12%)	BRICK = 979 SQ.FT. (66%)
ACCENT MATERIALS AREA -	EIFS = 398 SQ.FT. (22%)	
TOTAL WALL AREA =	1,803 SQ.FT. (100%)	

EXTERIOR FINISH SCHEDULE

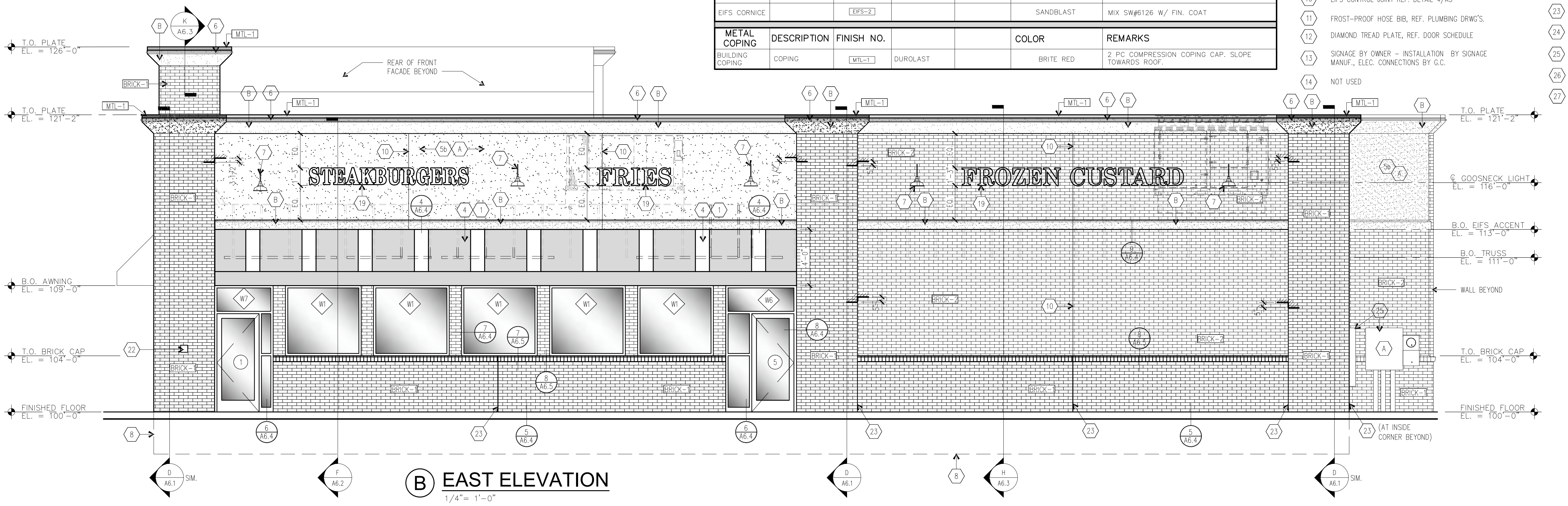
EXTERIOR PAINT	DESCRIPTION	FINISH NO.	MFGR.	MFGR. NO.	COLOR	REMARKS
BUILDING WALLS	PAINT *	(A)	SHERWIN WILLIAMS	#7533	KHAKI SHADE	PAINT WITH TWO COATS ACRYLIC LATEX (SATIN)
BUILDING TRIM	PAINT *	(B)	SHERWIN WILLIAMS	#6126	FREDDY'S PEARL	PAINT WITH TWO COATS ACRYLIC LATEX (SATIN)
BOLLARD	PAINT	(P3)	SHERWIN WILLIAMS	#17-572	FREDDY'S RED	PAINT WITH TWO COATS HIGH PERFORMANCE ACRYLIC (GLOSS)

* NOTE: ALL EXTERIOR INSULATED FINISH SYSTEM (E.I.F.S.) IS PRE-MIXED WITH SHERWIN-WILLIAMS COLORS AS SPEC'D. ABOVE. NO PAINTING OF BUILDING E.I.F.S. IS REQUIRED.

EXT. BRICK & EIFS	DESCRIPTION	FINISH NO.	MFGR.	COLOR & TEXTURE	REMARKS
BUILDING BRICK (OPT. #1)	BRICK MODULAR	(BRICK-1)	INTERSTATE BRICK-UTAH	MOUNTAIN RED	GROUT COLOR - GRAY MODULAR & THIN - RUMBLER EXTRA CHARGE
	THIN BRICK	(BRICK-2)	INTERSTATE BRICK-UTAH		GROUT COLOR - GRAY MODULAR & THIN - RUMBLER EXTRA CHARGE
BUILDING BRICK (OPT. #2)	BRICK MODULAR	(BRICK-1)	THE LAKEWOOD BRICK COMPANY	WELLSHIRE	GROUT COLOR - GRAY MODULAR & THIN - MADE RUMBLER
	THIN BRICK (OPT. #2)	(BRICK-2)	THE LAKEWOOD BRICK COMPANY		GROUT COLOR - GRAY MODULAR & THIN - MADE RUMBLER
EIFS WALLS		(EIFS-1)		SANDBLAST	MIX SW#7533 W/ FIN. COAT
EIFS CORNICE		(EIFS-2)		SANDBLAST	MIX SW#6126 W/ FIN. COAT

METAL COPING	DESCRIPTION	FINISH NO.	COLOR	REMARKS
BUILDING COPING	COPING	(MTL-1)	DUROLAST	BRITE RED 2 PC COMPRESSION COPING CAP. SLOPE TOWARDS ROOF.

- GENERAL NOTES:**
- SIGNS SHOWN ON THESE ELEVATIONS ARE FOR CODE REVIEW PURPOSES ONLY. THESE SIGN ELEVATIONS ARE NOT TO BE USED AS OR CONSTRUED AS SHOP DRAWINGS FOR SIGN CONSTRUCTION. SIGN SHOP DRAWINGS ARE PRODUCED BY THE SIGN MANUFACTURER FOR REVIEW AND APPROVAL BY THE OWNER.
- NOTE TO AWNING MANUFACTURER AND AWNING INSTALLER: AWNING FRAME TO BE ENGINEERED FOR APPROVAL BY LOCAL CODE AND DESIGNED TO MISS ALL BUILDING PROTRUSIONS NOT SHOWN ON PLANS.
- ELEVATION KEY NOTES:**
- (1) (2)-TUBE, STRIP LED FIXTURES WITH CLEAR LENS COVERS TO BACK LIGHT AWNINGS, TYP. SUPPLIED BY OWNER, WIRED & INSTALLED BY ELEC. CONTR.
 - (2) OVERFLOW DRAIN WITH LAMBS TONGUE
 - (3) HOLLOW METAL EXIT DR. REF. DOOR SCHED.
 - (4) EXTERIOR VINYL AWNING & ALUM FRAME BY OWNER AND AWNING MANUF. TYP REF. AWNING COLOR KEY SHT'S A3 & A4
 - (5a) STO 1 1/2" DRAINABLE EXTERIOR INSULATED FINISH SYSTEM (E.I.F.S.) ADHESIVELY ADHERED "SAND PEBBLE FIN."
 - (5b) STO 2 1/2" DRAINABLE EXTERIOR INSULATED FINISH SYSTEM (E.I.F.S.) ADHESIVELY ADHERED "SAND PEBBLE FIN."
 - (6) LED STRIP LIGHTING BY SIGN MFGR. TYP.
 - (7) GOOSENECK LIGHT FIXTURE "RED"
 - (8) CONCRETE FOUNDATION REFER TO STRUCT. PLANS FOR SIZE AND DETAILS
 - (9) NOT USED
 - (10) EIFS CONTROL JOINT REF. DETAIL 4/A3
 - (11) FROST-PROOF HOSE BIB, REF. PLUMBING DRWG'S.
 - (12) DIAMOND TREAD PLATE, REF. DOOR SCHEDULE
 - (13) SIGNAGE BY OWNER - INSTALLATION BY SIGNAGE MANUF., ELEC. CONNECTIONS BY G.C.
 - (14) NOT USED
 - (15) WALL PACK LIGHT FIXTURE. ABOVE REAR DOOR - REF. ELEC. PLANS
 - (16) GAS METER PTD. VERIFY LOC.
 - (17) NOT USED
 - (18) 4" CONC. FILLED PIPE BOLLARD. FREDDY'S RED
 - (19) ILLUMINATED CHANNEL LETTERS BY SIGN MANUF. READY ACCESS MODEL AA300 CURTAIN - 275 PASS-THRU AIR CURTAIN SYSTEM W/ STATUARY BRONZE FIN. ELECTRICAL CONTRACTOR TO VERIFY ELECTRICAL REQ'MTS. SEE MANUFACTURER FOR APPROPRIATE AIR CURTAIN CONFIGURATION BASED ON GEOGRAPHY.
 - (20) READY ACCESS MODEL 275 WINDOW/MANUAL SINGLE PANEL SLIDER, 48"W x 60" H. R.O. (INCL. AIR CURTAIN ABOVE). MANUAL OPEN/ ELECTRONIC RELEASE - OPENS ON SIDE THE CAR APPROACHES. BRONZE FINISH - PROVIDED BY & INSTALLED BY G.C.
 - (21) NOT USED
 - (22) RECESSED KNOX BOX
 - (23) BRICK EXPANSION JOINT REF. DETAIL 3/A3
 - (24) STEEL MESH HINGED GATE (W/LOCK) TO ENCLOSE BOTTOM OF ACCESS LADDER. (PAINT TO MATCH EIFS).
 - (25) ELECTRICAL CT CABINET & DISCONNECT - PTD., VERIFY LOCATION
 - (26) FREDDY'S PEDESTRIAN CROSSING SIGN. BOTTOM OF SIGN @ 56" A.F.F.
 - (27) SIAMSE FIRE DEPARTMENT CONNECTION.



(B) EAST ELEVATION
 1/4" = 1'-0"

THE DESIGN AND DETAILS DISCLOSED HEREIN ARE THE EXCLUSIVE PROPERTY OF RODGER W. BAKER, AIA AND SHALL NOT BE COPIED OR REPRODUCED IN WHOLE OR IN PART WITHOUT HIS PRIOR WRITTEN CONSENT.
 RODGER W. BAKER, AIA

EXTERIOR ELEVATIONS

DATE	
1/3/2023 PLANNING SET	
DRAWN BY:	RB, HM
CHECKED BY:	RB
SHEET NO.	A4