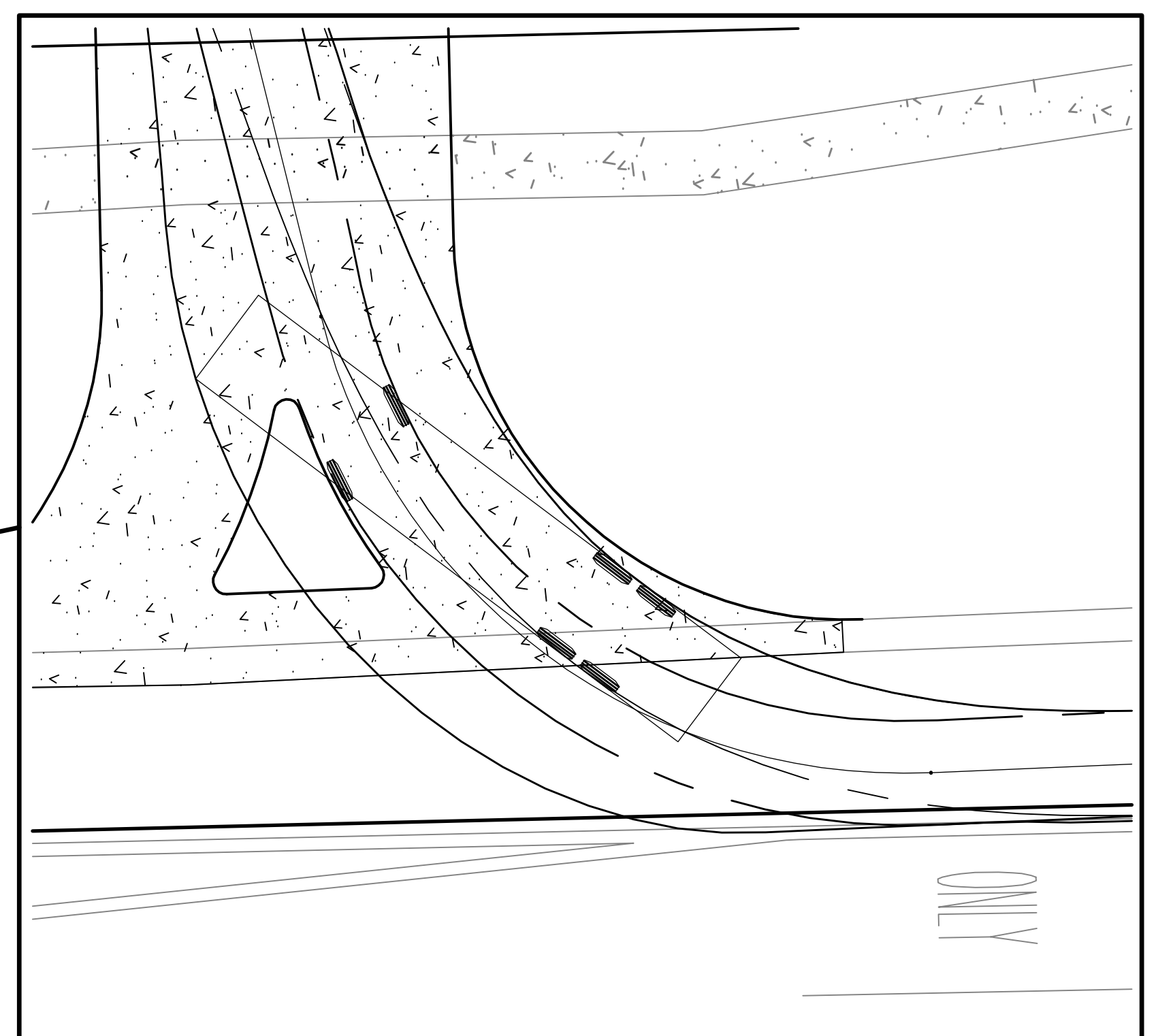
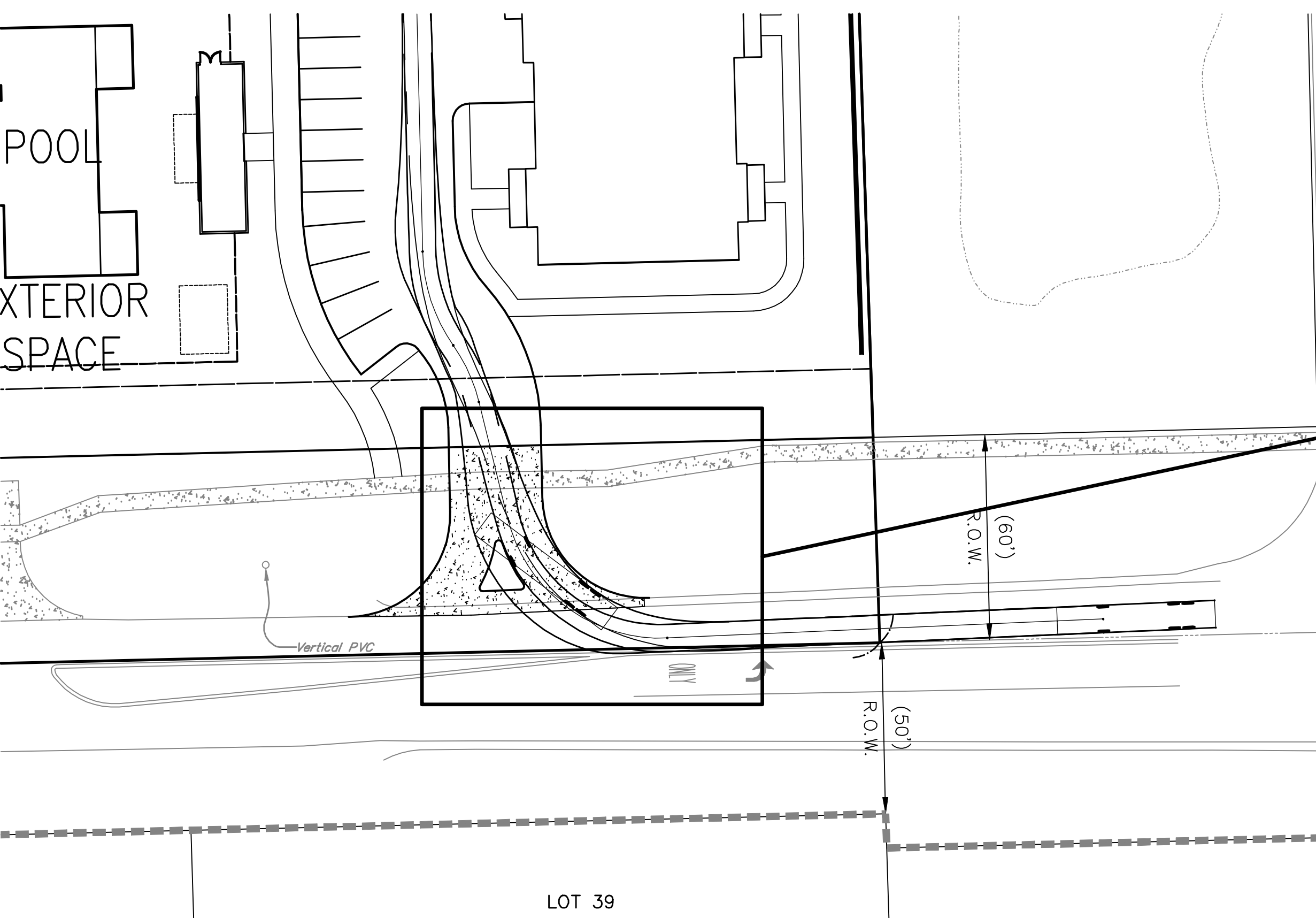
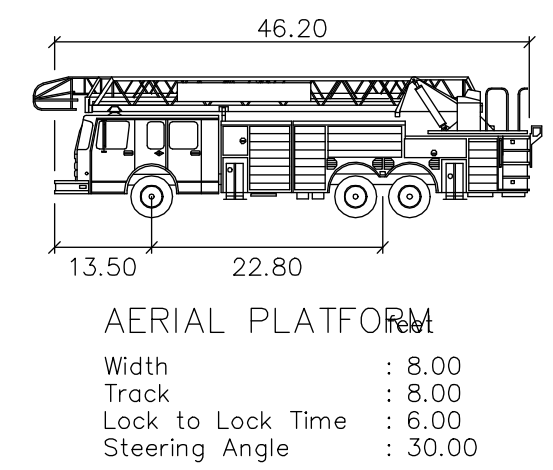
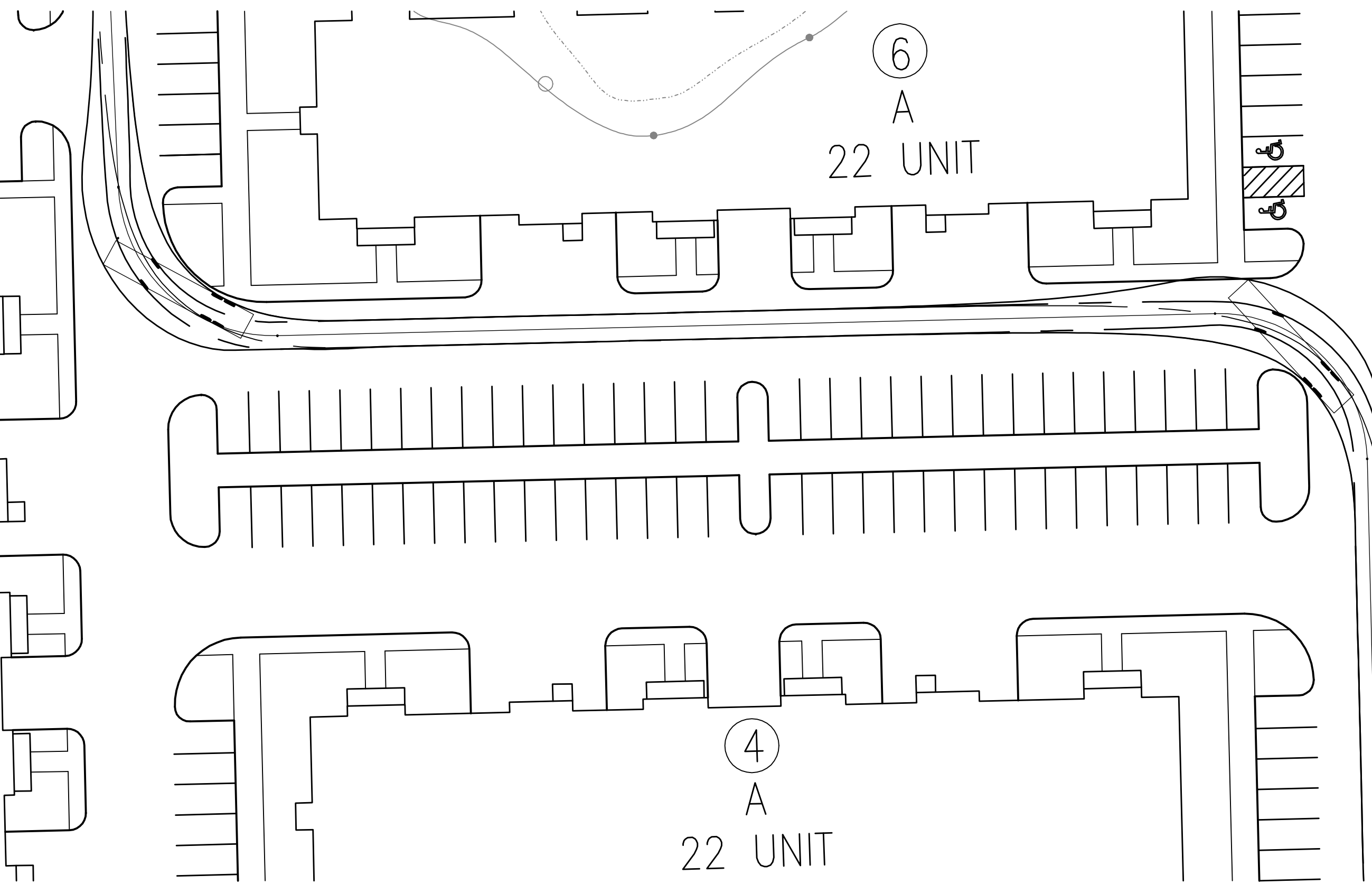
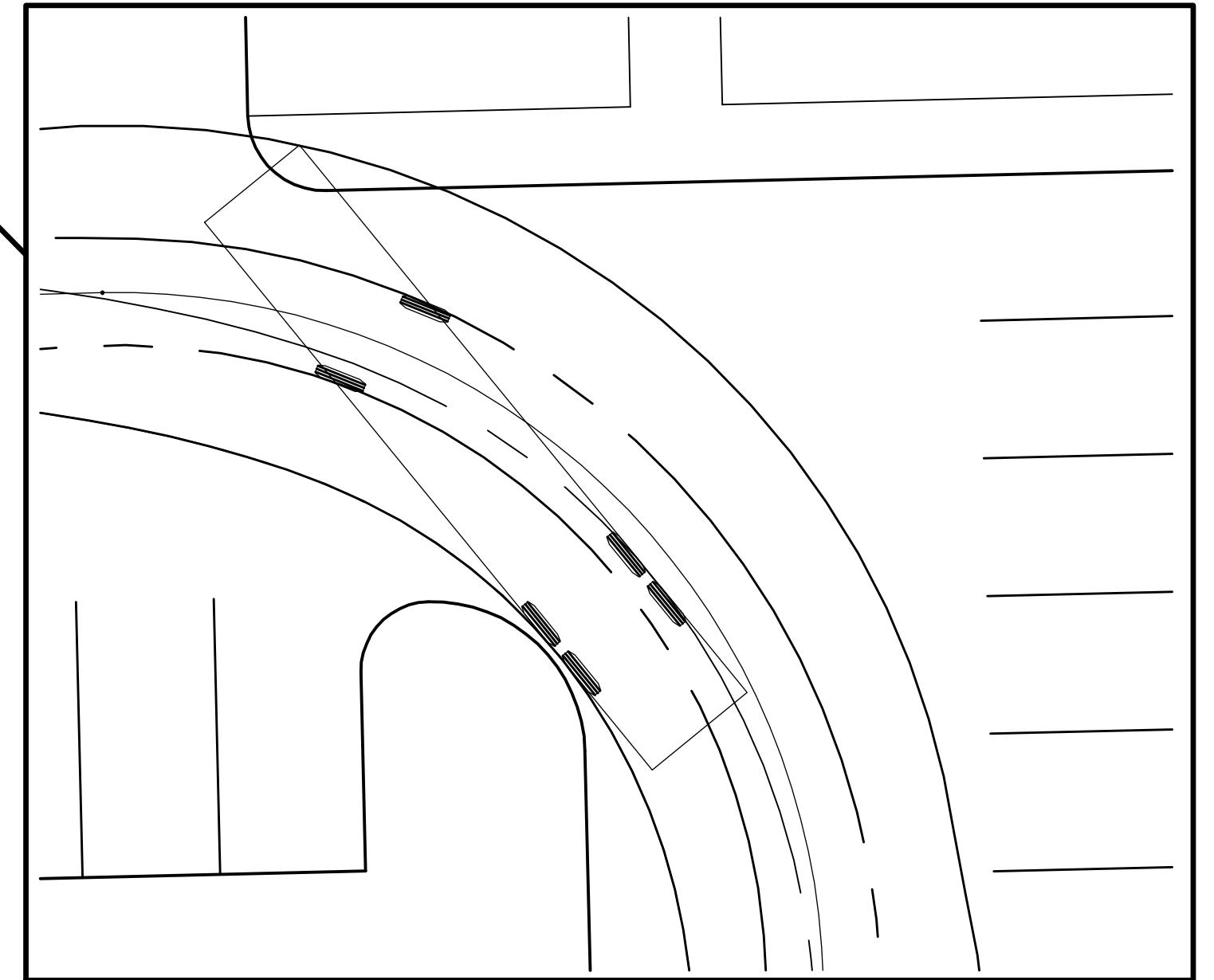
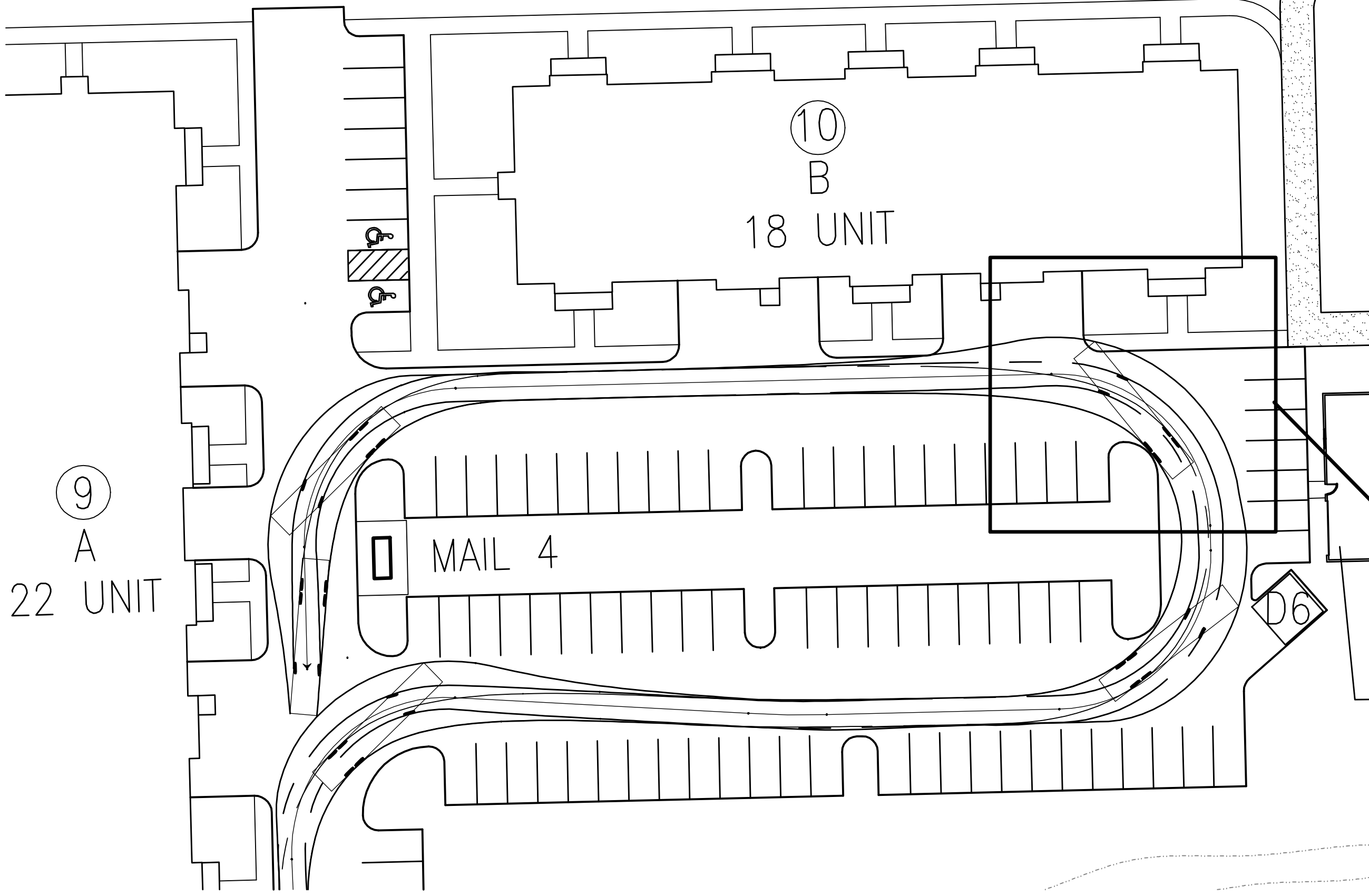
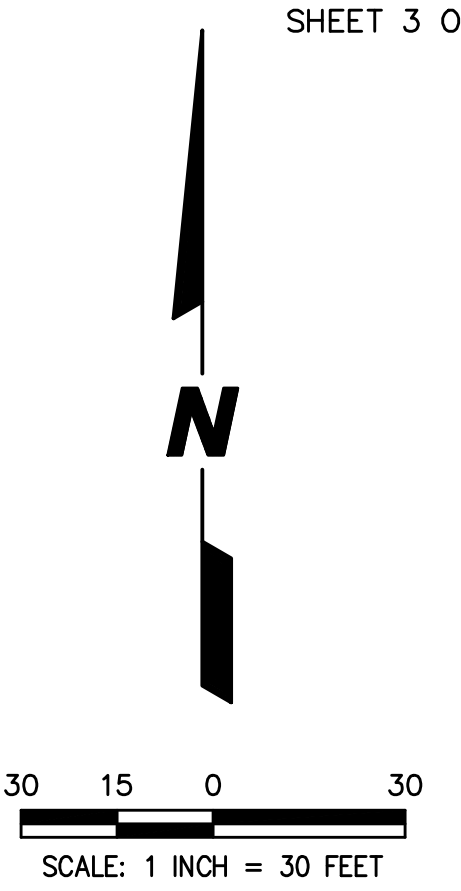


N 88°41'14" E 663.73'
663.73'



LOT 39

PREPARED FOR:
BRIDGE CAPITAL PARTNERS
899 PINE STREET #2000
SAN FRANCISCO, CA. 94108



PREPARED BY:
CEMCON, Ltd.

Consulting Engineers, Land Surveyors & Planners
2280 White Oak Circle, Suite 100
Aurora, Illinois 60502-9675
PH: 630.862.2100 FAX: 630.862.2199
E-Mail: info@cemcon.com Website: www.cemcon.com

DISC NO.: 904411 FILE NAME: AUTOTURN
DRAWN BY: KMS FLD. BK. / PG. NO.: ----
COMPLETION DATE: 03-29-22 JOB NO.: 904.411
XREF : TOPO PROJECT MANAGER : KMM
REV: 05-11-22/KMS PER CITY COMMENTS 04-26-22

**AUTOTURN EXHIBIT FOR THE BELVEDERE
CITY OF NAPERVILLE PROJECT NO. 22-1-023**