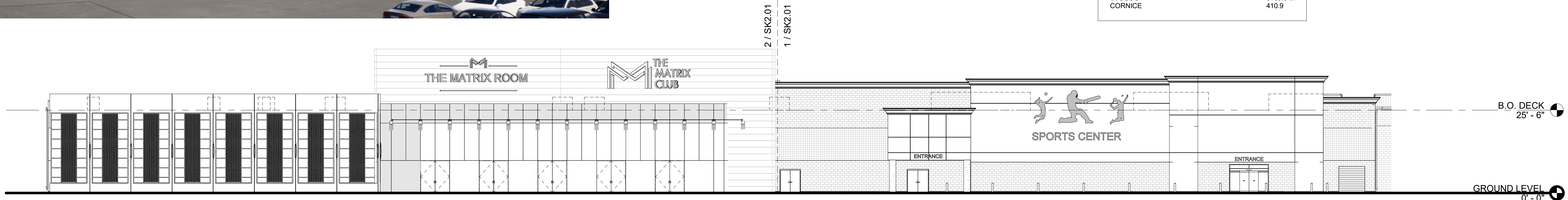




NORTHERN PORTION OF WEST FACADE	
STUCCO	1148.1 SF
MTL GRILL PANEL	775.01 SF
TRESPA PANEL COLOR 1	1137.6 SF
CURTAIN WL / W SPANDREL GLS	907.9 SF
CURTAIN WL & DR(S) / W CLEAR GLS	2023.4 SF
TRESPA PANEL COLOR(S) 2/3	2492.9 SF

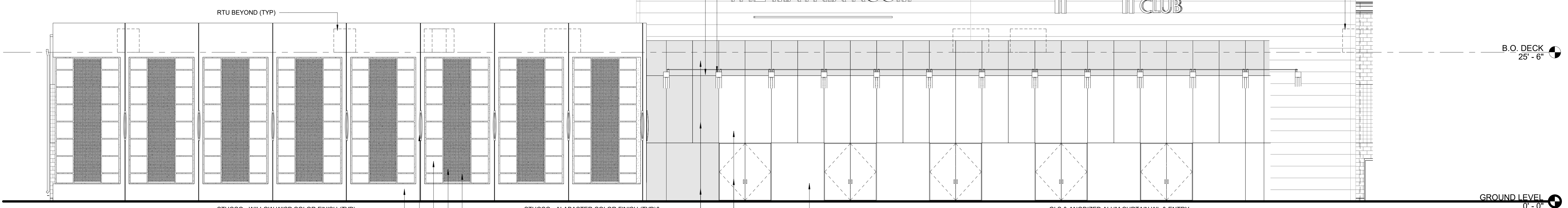
  

SOUTHERN PORTION OF WEST FACADE	
CMU	2529.3 SF
GLS ENTRY	105.9 SF
MTL DR(S)	70 SF
STUCCO	3189.6 SF
CORNICE	410.9



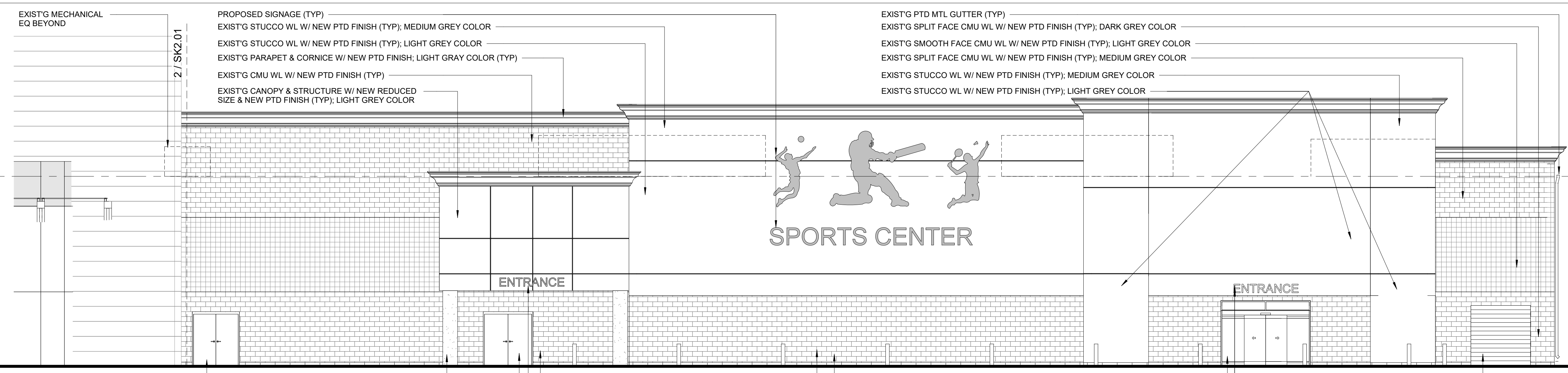
3 PROPOSED WEST ELEVATION - OVERALL  
1/16" = 1'-0"

- PROPOSED PANEL PARAPET WL / WL - ALTERNATING ROWS OF TRESPA LONDON GRAY OBLIQUE & TEMPERED GRAY MATT
- PROPOSED SIGNAGE - BURGUNDY & GOLD LETTERING
- PROPOSED ANODIZED ALUM CLAD CANOPY SUPPORT WITH RECESSED LED LT FIXT (TYP)
- PROPOSED GLS CANOPY (TYP)



2 PROPOSED WEST ELEVATION - NORTHERN PORTION  
1/8" = 1'-0"

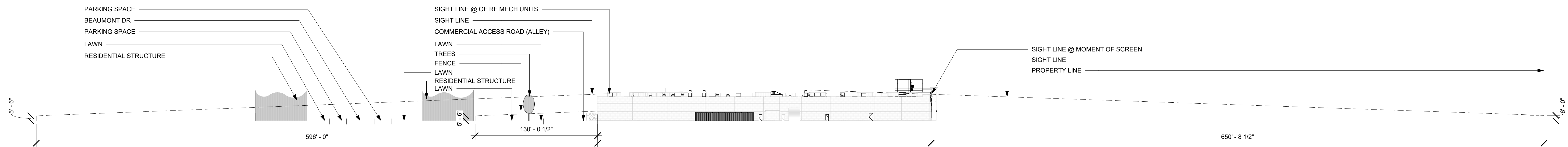
- STUCCO - WILLOW WISP COLOR FINISH (TYP)
- PROPOSED LED SCONCE LIGHT FIXTURE STAINLESS STEEL FINISH(TYP)
- PROPOSED PANEL - TRESPA METEON EAST RED SATIN (TYP)
- STUCCO - ALABASTER COLOR FINISH (TYP)& PERFORATED STAINLESS STEEL SCREEN (TYP)
- PROPOSED PERFORATED STAINLESS STEEL SCREEN (TYP) W/ BACKLIGHTING (TYP)
- GLS & ANODIZED ALUM CURTAIN WL & ENTRY
- CLEAR GLASS (NO FILM)
- 3M FILM FINISH ON GLASS - FEATHER GRADIENT SXJ-0547



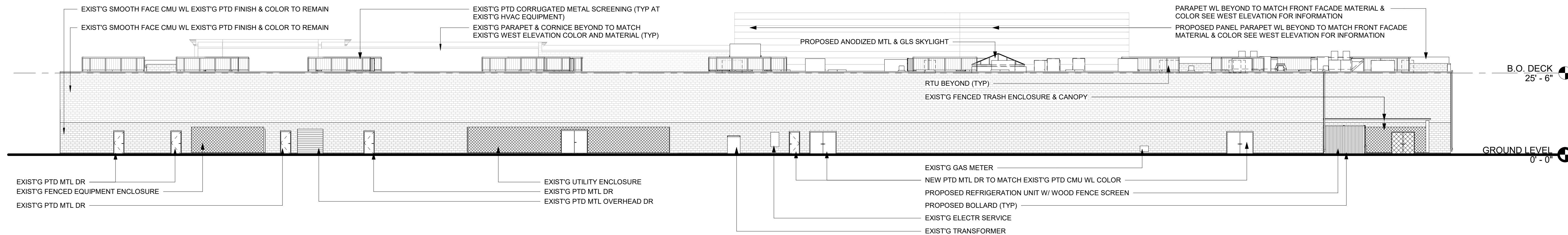
- EXIST'G MECHANICAL EQ BEYOND
- PROPOSED SIGNAGE (TYP)
- EXIST'G STUCCO WL W/ NEW PTD FINISH (TYP); MEDIUM GREY COLOR
- EXIST'G STUCCO WL W/ NEW PTD FINISH (TYP); LIGHT GREY COLOR
- EXIST'G PARAPET & CORNICE W/ NEW PTD FINISH; LIGHT GRAY COLOR (TYP)
- EXIST'G CMU WL W/ NEW PTD FINISH (TYP)
- EXIST'G CANOPY & STRUCTURE W/ NEW REDUCED SIZE & NEW PTD FINISH (TYP); LIGHT GREY COLOR
- EXIST'G PTD MTL GUTTER (TYP)
- EXIST'G SPLIT FACE CMU WL W/ NEW PTD FINISH (TYP); DARK GREY COLOR
- EXIST'G SMOOTH FACE CMU WL W/ NEW PTD FINISH (TYP); LIGHT GREY COLOR
- EXIST'G SPLIT FACE CMU WL W/ NEW PTD FINISH (TYP); MEDIUM GREY COLOR
- EXIST'G STUCCO WL W/ NEW PTD FINISH (TYP); MEDIUM GREY COLOR
- EXIST'G STUCCO WL W/ NEW PTD FINISH (TYP); LIGHT GREY COLOR

1 PROPOSED EAST ELEVATION - SOUTHERN PORTION  
1/8" = 1'-0"

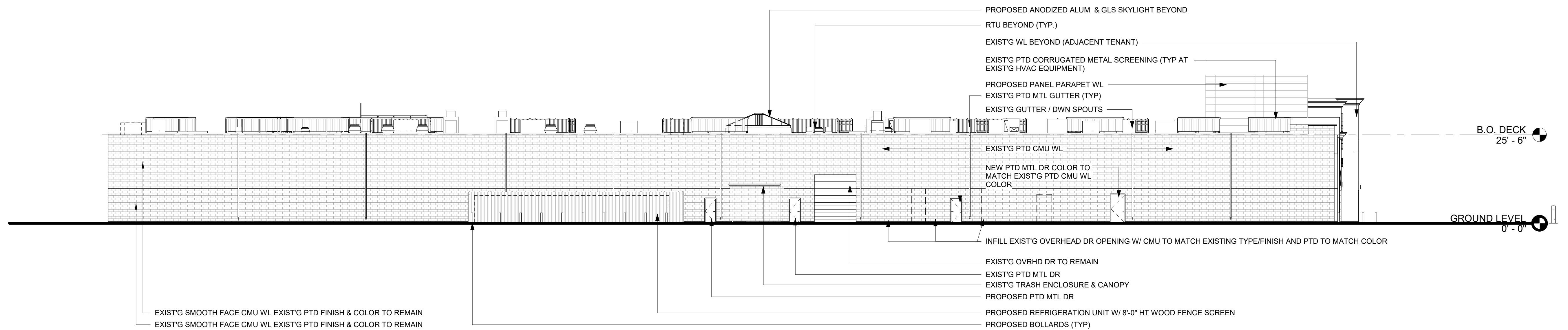
- EXIST'G COLUMN W/ NEW PTD FINISH (TYP); MEDIUM GREY COLOR
- EXIST'G PTD MTL DR (TYP) W/NEW PTD FINISH TO MATCH CMU WL COLOR
- PROPOSED SIGNAGE (TYP)
- EXIST'G SMOOTH FACE CMU WL W/ NEW PTD FINISH; DARK GRAY COLOR (TYP)
- EXIST'G BOLLARD (TYP)
- EXIST'G ALUM & GLS SLIDING DR ENTRY W/ TRANSOM
- PROPOSED SIGNAGE (TYP)
- EXIST'G PTD MTL OVERHEAD DR W/ NEW PTD FINISH TO MATCH CMU WL COLOR



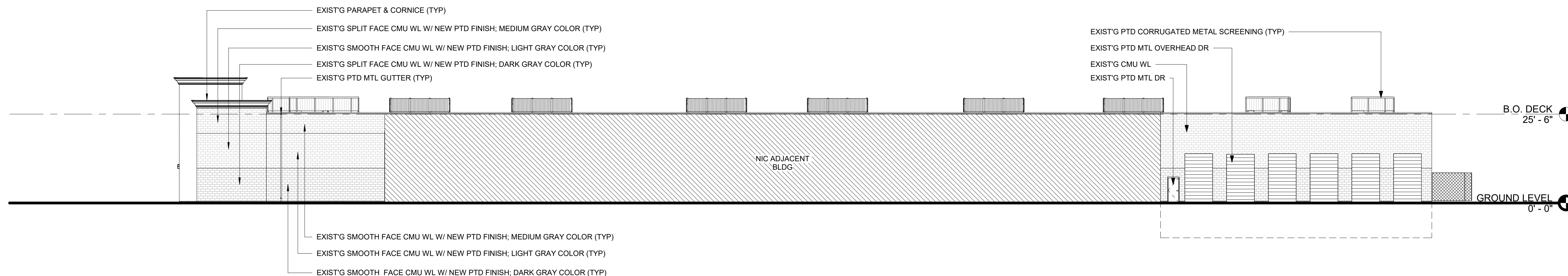
④ DIAGRAM SIGHT LINES @ PROPERTY LINE TO ROOFTOP ENCLOSURES  
1" = 50'-0"



③ EXIST'G EAST ELEVATION  
1/16" = 1'-0"



② EXIST'G NORTH ELEVATION  
1/16" = 1'-0"



① EXIST'G SOUTH ELEVATION  
1/16" = 1'-0"