

STREET # 235-239

DIRECTION S

STREET WASHINGTON

ABB STREET

PIN 0713430031

NUMBER OF STOREFRONTS 2

Listed on existing SURVEY?
Naperville Downtown Walking Tour (Naper Settlement)



GENERAL INFORMATION

CATEGORY building

CONDITION good

INTEGRITY major alterations and/or addition(s)

GENERAL COMMENTS

CURRENT FUNCTION Commerce/Trade

HISTORIC FUNCTION Commerce/Trade/Funery

ARCHITECTURAL DESCRIPTION

ARCHITECTURAL CLASSIFICATION Two-Part Commercial Block

DETAILS Gothic Revival

BEGINYEAR 1928

OTHER YEAR

DATESOURCE Cornerstone

WALL MATERIAL (current) Brick

WALL MATERIAL 2 (current)

WALL MATERIAL (original) Brick

WALL MATERIAL 2 (original)

PLAN rectangular

NO OF STORIES 3

ROOF TYPE Not visible (flat)

ROOF MATERIAL Not visible

FOUNDATION Concrete

WINDOW MATERIAL Aluminum

WINDOW MATERIAL Glass block

WINDOW TYPE display/fixd

WINDOW CONFIG 1-light

SIGNIFICANT FEATURES 2nd and 3rd stories feature window bays with very little ornament and simple stone lintels and sills; large pointed arch openings at north section of building

ALTERATIONS All upper windows have been filled in with brick; signage (Biedelman) probably dates from the 1950s or 60s; 2nd story entry at north end of east elevation changed to display window, in downsized opening; original cornice removed; pointed arch windows at N. end of east elevation and on north elevation filled with glass block

STOREFRONT1 FEATURES

STOREFRONT ALTERATIONS

Original pointed arch opening to funeral home and chapel replaced with flush storefront with south end entry and aluminum at sign level (1950s or 1960s)

HISTORIC INFORMATION

HISTORIC NAME

COMMON NAME

COST

ARCHITECT

ARCHITECT2

BUILDER

ARCHITECT SOURCE

HISTORIC INFO From page 15 of the Naperville Downtown Walking Tour: "Biedelman's was the site of Fred Long's undertaking and furniture business. Oliver and Arthur Biedelman took over Long's business in 1911. They tore the old building down and built this large 3-story store and funeral chapel. The Gothic Style windows were once crowned with a large ornate pediment."

PREPARER

PREPARER ORGANIZATION

SURVEYDATE

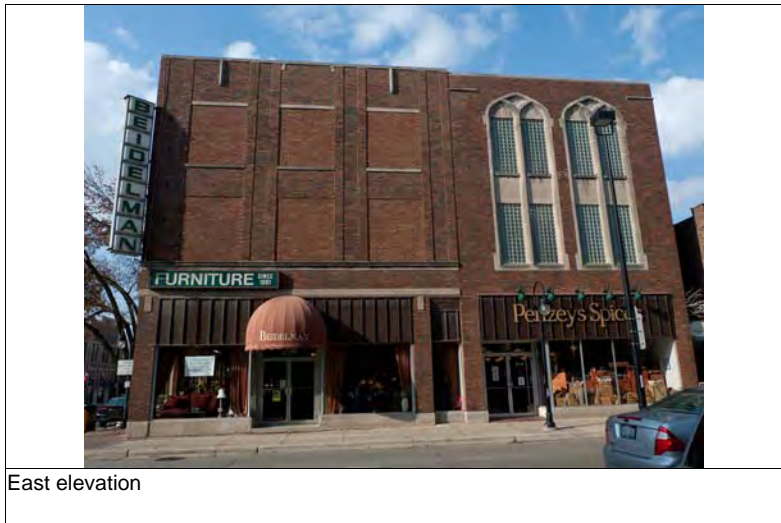
SURVEYAREA

DIGITAL PHOTO ID

DIGITAL PHOTO ID2

DIGITAL PHOTO ID3

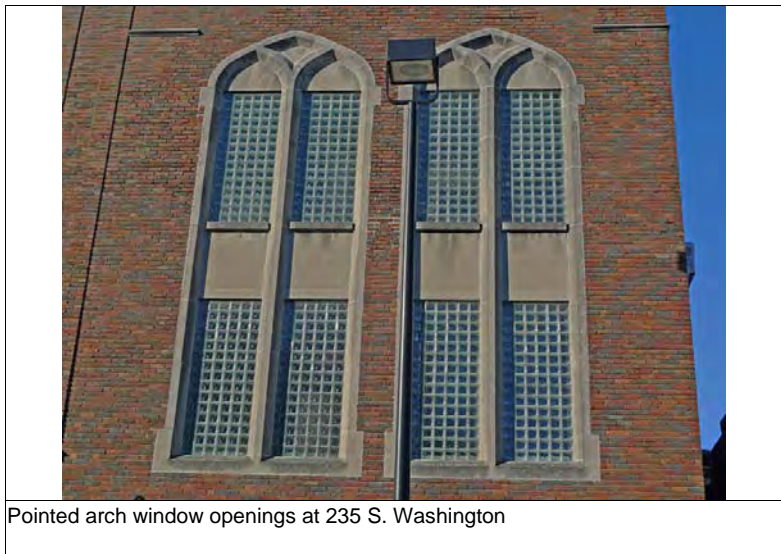
DIGITAL PHOTO ID4



East elevation



235 S. Washington storefront



Pointed arch window openings at 235 S. Washington

STREET #	235-239
DIRECTION	S
STREET	WASHINGTON
ABB	STREET

STREET #

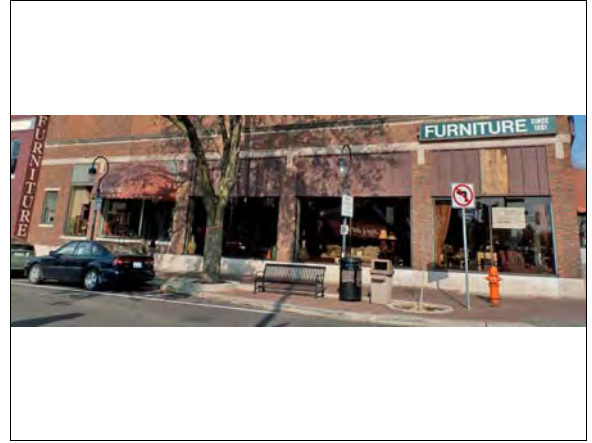
STOREFRONT 2

FEATURES

configuration is historic--slightly recessed center entry on east elevation, with display windows on east and south elevations

ALTERATIONS

replacement display windows; upper section of storefront covered with aluminum; cloth awning over entry; at west end of Jackson elevation, the display windows have been downsized slightly, with brick infill below smaller display windows

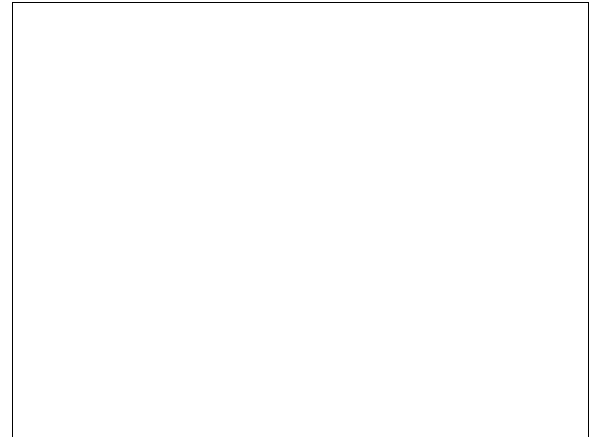


STREET #

STOREFRONT 3

FEATURES

ALTERATIONS



235-239	S	WASHINGTON	STREET
---------	---	------------	--------



South elevation (facing Jackson)



Storefront level at east elevation



Partial north elevation



Historic photograph from collections of Naper Settlement Research Library and Archives

DIGITAL PHOTO ID5

\\Images\WashingtonSt235-239S (3).jpg

DIGITAL PHOTO ID7

\\Images\WashingtonSt235-239S (6).jpg

DIGITAL PHOTO ID6

\\Images\WashingtonSt235-239S (5).jpg

DIGITAL PHOTO ID8

\\Images\WashingtonSt235-239S (historic).jpg