



REAR LEFT



REAR RIGHT



FRONT RIGHT

REPRESENTATION MATERIAL COLOR



- UNA-CLAD COPING "MEDIUM BRONZE"
- METAL CANOPY @ ENTRY & DRIVE-THRU NATURAL ALUM.
- EIFS "TONY TAUPE"
- HARDIEPLANK "KHAKI BROWN"
- GOOSENECKS & SCONCES "BROWN"
- AWNING CANVAS "ROYAL BLUE" (BY OTHERS)
- WINDOW & DOOR FRAMES NATURAL ALUM.
- MFGRD STONE w/ STONE SILL TRIM "ASPEN NICKEL CREEK" TUSCAN LEDGE, ENVIRONMENTAL STONEWORKS



LEFT PERSPECTIVE



RIGHT PERSPECTIVE

FRONT LEFT

EXHIBIT G

©2018

NEW CULVER'S RESTAURANT
Naperville - Wheaton Road
 Naperville, IL 60563
 County of DUPAGE

OLLMANN ERNEST MARTIN
 ARCHITECTS
 200 South State Street
 Belvidere Illinois 61008
 815-544-7790 Phone

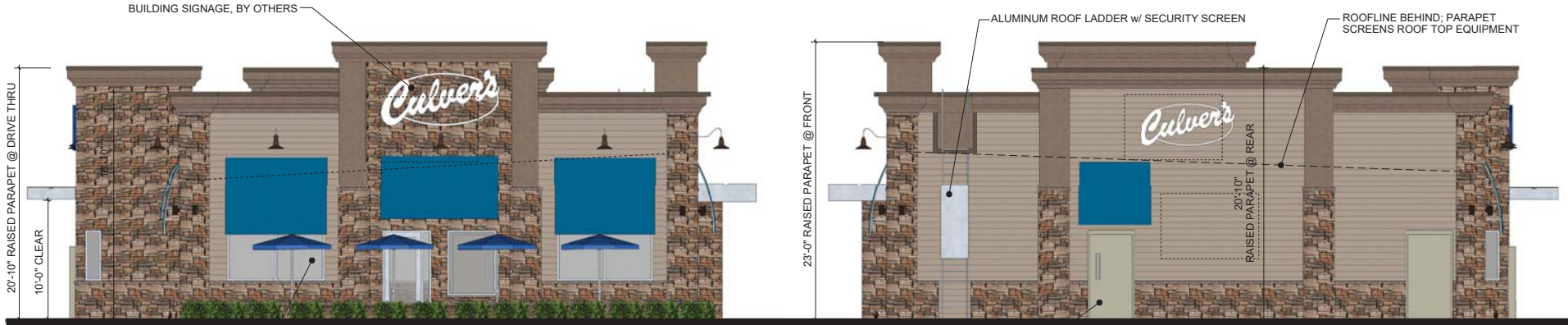
COLOR ELEVATIONS
 NOTE: THOUGH THESE IMAGES HAVE PHOTO
 REALISM, MATERIALS MAY VARY IN APPEARANCE.
 Date: 11-8-2018
 Rev: 001

2018-078

A3

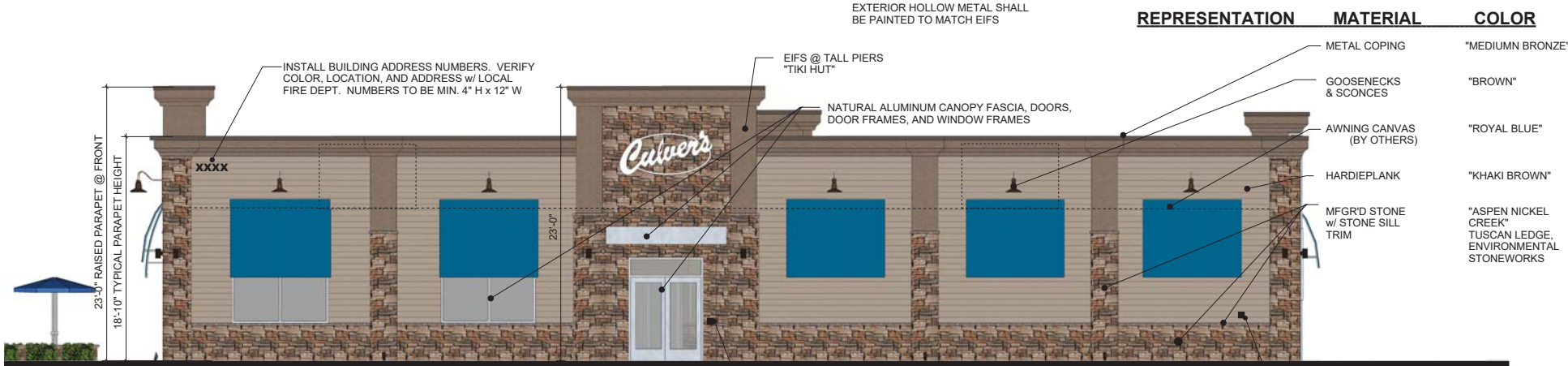


DRIVE THRU ELEVATION



FRONT ELEVATION

REAR ELEVATION



MAIN ENTRY ELEVATION

REPRESENTATION	MATERIAL	COLOR
	METAL COPING	"MEDIUM BRONZE"
	GOOSENECKS & SCONCES	"BROWN"
	AWNING CANVAS (BY OTHERS)	"ROYAL BLUE"
	HARDIEPLANK	"KHAKI BROWN"
	MFG'D STONE w/ STONE SILL TRIM	"ASPEN NICKEL CREEK" "TUSCAN LEDGE, ENVIRONMENTAL STONEWORKS"

KNOX BOX - VERIFY LOCATION & TYPE W/ LOCAL FIRE DEPT

FDC - VERIFY W/ LOCAL FIRE DEPT

EXHIBIT G

©2018

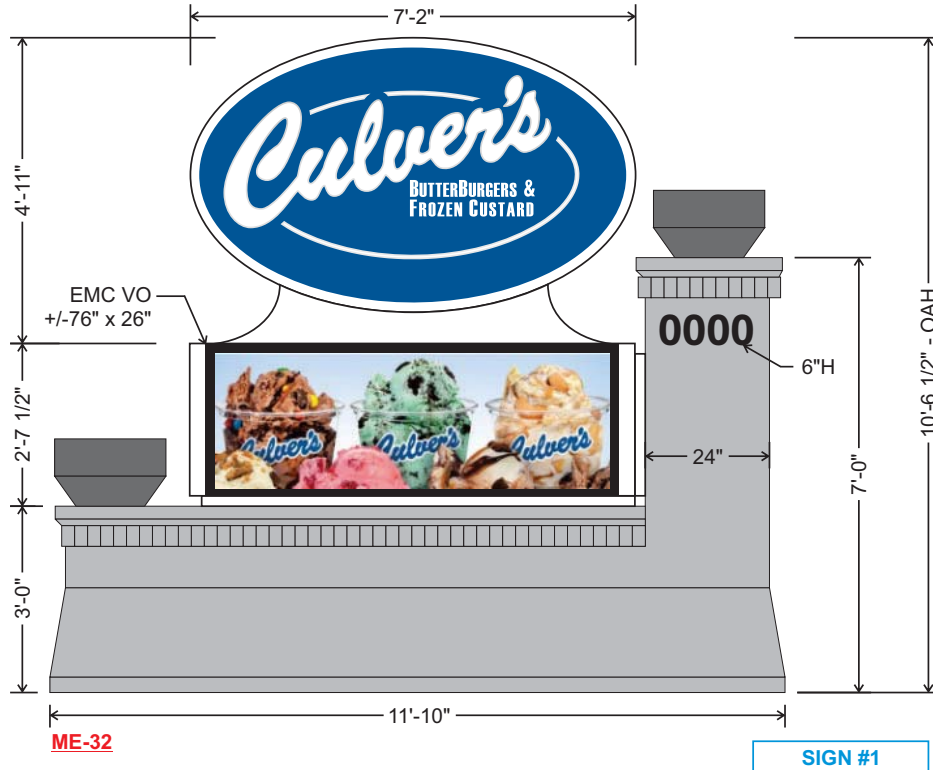
NEW CULVER'S RESTAURANT
Naperville - Wheaton Road
 Naperville, IL 60563
 County of DUPAGE

OLLIVANN ERNEST MARTIN
 ARCHITECTS
 200 South State Street
 Belvidere Illinois 61008
 815-544-7790 Phone

COLOR ELEVATIONS
 NOTE: THOUGH THESE IMAGES HAVE PHOTO
 REALISM, MATERIALS MAY VARY IN APPEARANCE.

Date: 11-2-2018
 Revision:
 2018-078

A2



D/F Illuminated Monument Sign - with Full Color EMC

Scale 1/2" = 1'-0"

Specifications:

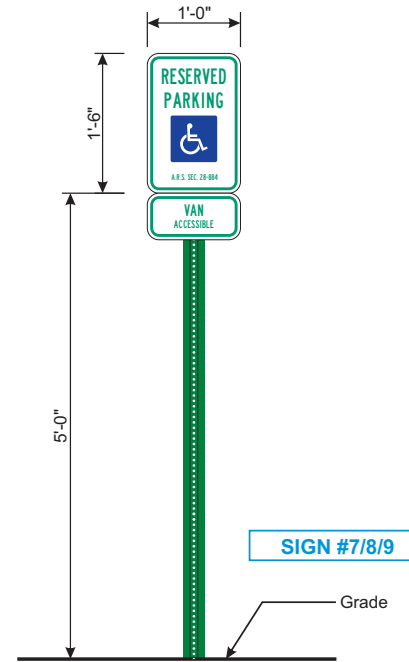
- Sign Cabinet: Aluminum
- Face Panels: .220 White Thermoformed SG Polycarbonate with Translucent film first surface - pan formed & embossed.
- Access: Remove sign face to service inside of sign
- Wind Load: Maximum wind load 30 psf
- EMC Copy Color: Full Color - 16mm
- EMC Electrical Spec: 120 VAC
- EMC Frame Rate: 65 frames per second

Color Specifications:

- Sign Exterior: Matthews N202 White or Equivalent
- Sign Graphics: Color - Blue / PMS - 294c / 3M - Vq109041

Base & Foundation:

- Brick & stone foundation - exact specifications TBD
- Cast limestone caps
- Planters - exact specifications TBD
- Address copy - 1/2"Th painted FCO aluminum numerals stud mounted flush



REG-HC-1 Regulatory Sign -

Scale 3/4" = 1'-0"

Qty Required: (2) Signs

Specifications:

- Sign Face: Corrosion-resistant Aluminum
- Sign Pole: Steel Channel
- Decoration: Sign Face - Reflective enamel finish for day/night visibility
Pre-drilled sign face.
Complies with federal guidelines
Pole - Baked enamel green
- Area: 1.5 Sq Ft
- Weight (Est.): 25 lbs. (crated) - 15 lbs. (uncrated)
- Wind Load: Maximum wind load 35 psf

Design to match City of Chandler required specifications



Culver's of Naperville
N. Naper Blvd & Naperville Rd
Naperville, IL

Sign Type: _____ New Site
Job Number #: _____ 7030306
Drawing Name: _____
7030306_Culvers_Naperville IL.cdr

Metro L 1.4.1

DATE/REVISIONS 09/12/18 RM

MAIN GROUND SIGNAGE



934 N. Church Rd., Elmhurst, AZ 60126



© COPYRIGHT 2011, BY SOUTH WATER SIGNS, LLC.
ALL DESIGNS AT THE SOLE PROPERTY OF SOUTH WATER, LLC.
AND MAY NOT BE REPRODUCED IN PART OR WHOLE WITHOUT
WRITTEN PERMISSION FROM SOUTH WATER SIGNS, LLC.