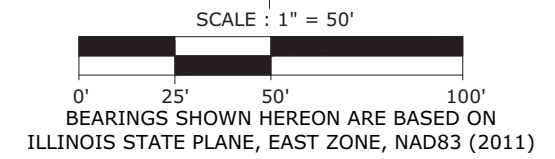
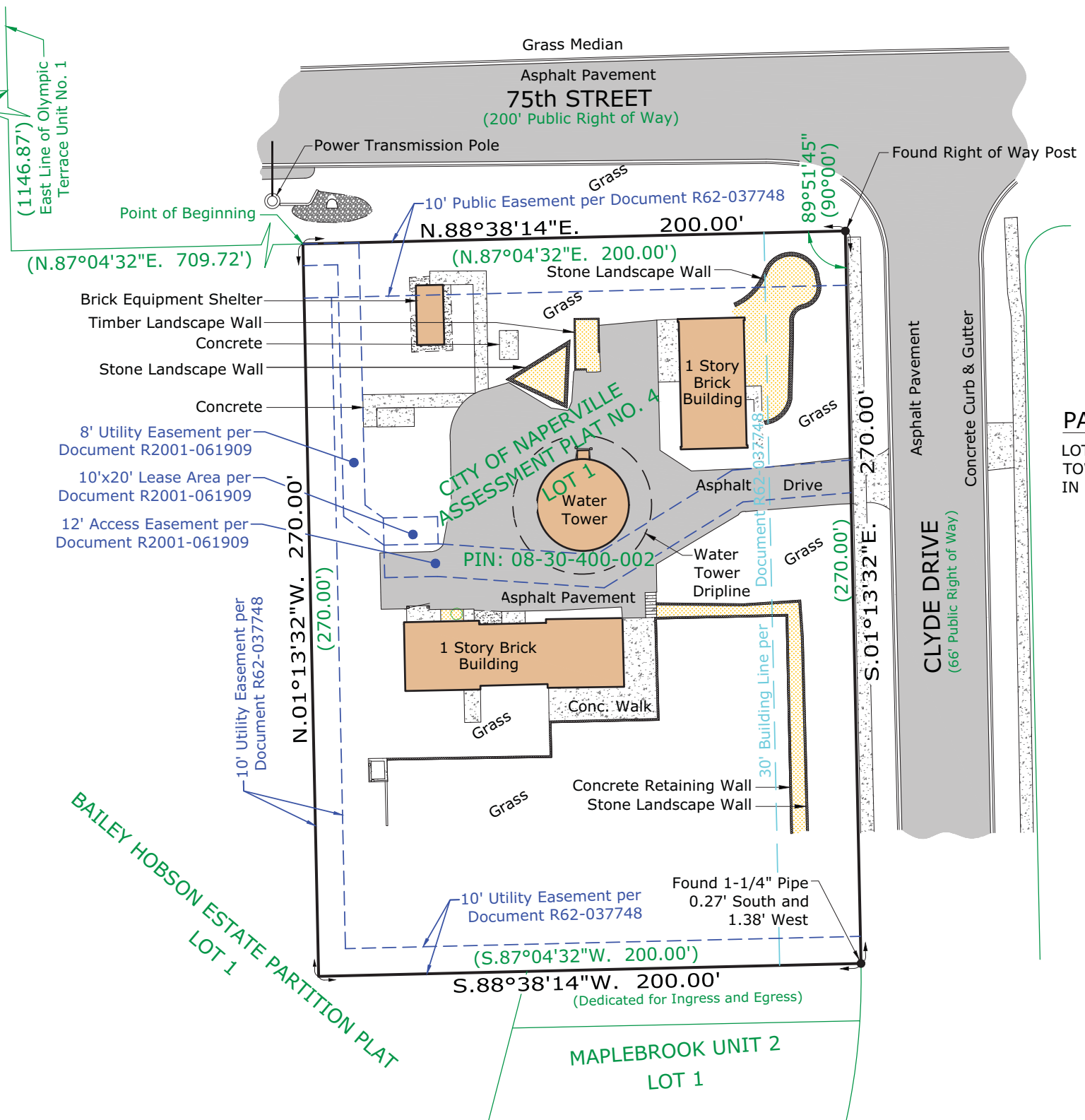


OLYMPIC TERRACE  
UNIT NO. 1  
Document No. 968050

Place of Commencement  
Southeast Corner of  
Olympic Terrace Unit No. 1



**PARENT PARCEL LEGAL DESCRIPTION:**

LOT 1 IN CITY OF NAPERVILLE ASSESSMENT PLAT NO. 4 IN SECTION 30, TOWNSHIP 38 NORTH, RANGE 10 EAST OF THE THIRD PRINCIPAL MERIDIAN, IN DUPAGE COUNTY, ILLINOIS.

**EXHIBIT B**



PREPARED BY:  
**ASM**  
ASM Consultants, Inc.  
16 E Wilson St - Batavia IL 60510  
(630) 879-0200 - advanced@advct.com  
Professional Design Firm #184-006014 expires 4/30/2025  
©COPYRIGHT 2024, ASM CONSULTANTS, INC. ALL RIGHTS RESERVED.

**PLAT OF SURVEY OF LEASE AREA**

PREPARED FOR:  
**T-Mobile**  
1400 OPUS PLACE, SUITE 700  
DOWNERS GROVE, IL 60515  
PHONE: (773) 444-5400  
**KCS CORPORATION**  
CONSULTING ENGINEERS  
1125 Remington Rd.  
Schaumburg, IL 60173

NO.	DATE	REVISION
1.	2/21/2024	FIELD SURVEY COMPLETED
2.	3/14/2024	ISSUED PRELIMINARY SURVEY

SITE DESIGNATION INFORMATION:  
**WASHINGTON & 75TH  
WT - REPLACEMENT**  
CH95363A  
1301 CLYDE DR  
NAPERVILLE, IL 60565  
DUPAGE COUNTY

DRAWN BY: EM  
CHECKED BY: CSJ  
PROJECT NO.  
**750028**  
SHEET  
3 OF 4  
**L-3**