

07-13-105-002
607 W SPRING AVENUE
WEST SPRING LLC

Tree #	Botanical Name	Common Name	Caliper DBH	Condition	Action
501	Pinus nigra	Austrian Pine	49"	Poor	Diseased
502	Acer saccharinum	Silver Maple	27"	Good	Remove - Construction Conflict
503	Acer saccharinum	White Birch	16"	Good	Remove - Construction Conflict
504	Acer saccharinum	Silver Maple	26"	Good	Remove - Construction Conflict
505	Picea pungens	Colorado Blue Spruce	8"	Good	Remove - Construction Conflict
506	Picea pungens	Colorado Blue Spruce	5"	Good	Remove - Construction Conflict
507	Pinus strobus	White Pine	5"	Good	Remove - Construction Conflict
508	Pinus strobus	White Pine	10"	Good	Remove - Construction Conflict
509	Picea pungens	Colorado Blue Spruce	5"	Good	Remove - Construction Conflict
510	TBD	TBD	4"	Good	Remove - Construction Conflict
511	TBD	TBD	5"	Good	Remove - Construction Conflict
512	N/A	N/A	N/A	Good	Remove - Construction Conflict
513	TBD	TBD	6"	Good	Remove - Construction Conflict

MUNICIPAL/AGENCY APPROVAL STAMP

C&M LAND LLC.
CLIENT ADDRESS
CITY, STATE

WEST STREET EXECUTIVE HOMES
241 N. WEST STREET
NAPERVILLE, IL 60540
TREE PRESERVATION PLAN

NO.	DATE	REVISION DESCRIPTION
1	12/17/2023	PER CLIENT'S COMMENTS
2	12/17/2023	PER CLIENT'S COMMENTS
3	03/27/2024	PER CITY'S COMMENTS
4	03/27/2024	PER CITY'S COMMENTS

DESIGNED BY: ARB
REVIEWED BY: KP
DATE: 11/30/2023
PRJ#: 5942-300-32

Weaver
Consultants
Group

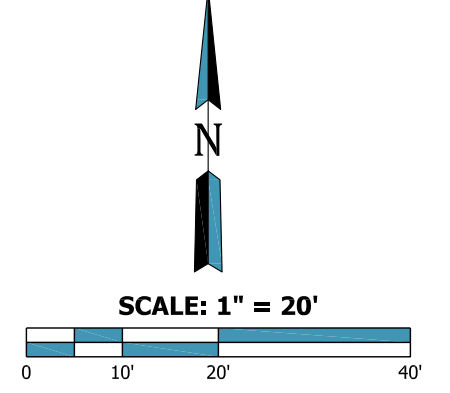
OFFICE LOCATION:
WEAVER CONSULTANTS GROUP
1314 BOND STREET, SUITE 100
NAPERVILLE, ILLINOIS 60563
(630) 717-4848
wcgrp.com

REUSE OF THIS DOCUMENT AND THE DESIGN INCORPORATED HEREIN, AS AN INSTRUMENT OF PROFESSIONAL SERVICE, IS THE PROPERTY OF WEAVER CONSULTANTS GROUP, AND IS NOT TO BE USED IN WHOLE OR IN PART WITHOUT THE WRITTEN AUTHORIZATION OF WEAVER CONSULTANTS GROUP. COPYRIGHT © 2023 WEAVER CONSULTANTS GROUP. ALL RIGHTS RESERVED.

SHEET #:
L-1



LANDSCAPE PREPARED BY WEAVER CONSULTANTS GROUP UNDER DIRECTION OF KENNETH M. PRICE



C:\PROJECTS\5942 - C&M Land LLC - West Street Executive Homes\2\Drawings\5942-300-32.dwg, 11/30/2023, 11:35:55 AM, greg@weaver.com, 11/30/2023

PER DOC. (1870)13102
07-13-105-002
607 W SPRING AVENUE

LANDSCAPE LEGEND

- AS SHOWN = 980 SY
- TURF GRASS SEED AND BLANKET FIELD OF DREAMS GAMEDAY MIXTURE (OR APPROVED EQUAL) APPLICATION RATE 4 LBS PLS PER 1,000 S.F. SEED MIX BY CONSERV FS 1110 MCCONNELL RD WOODSTOCK, IL 60098
- SALT TOLERANT SOD (LOCATED IN PARKWAY)

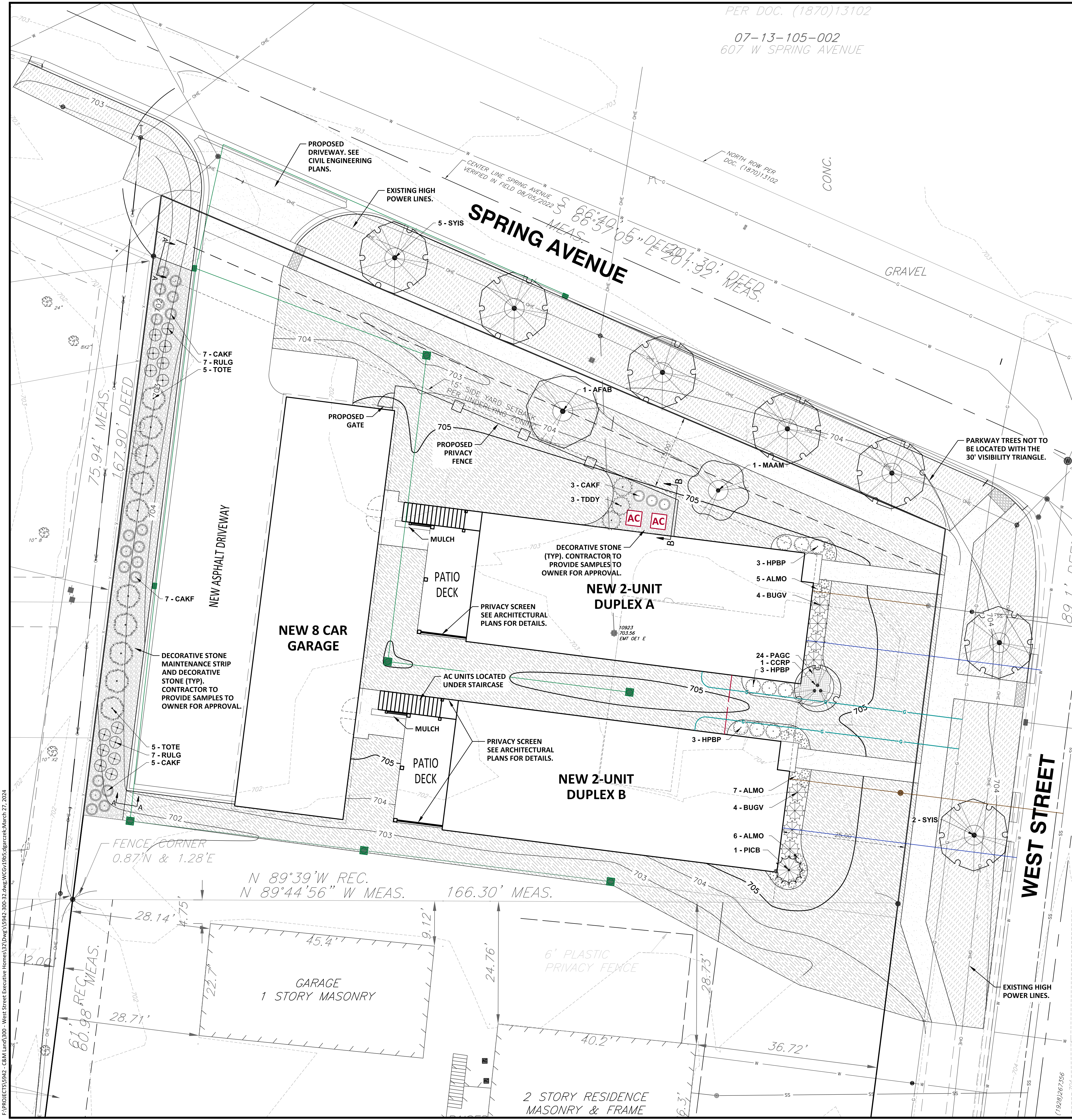
NAPERVILLE LANDSCAPE NOTE

TREES SHOULD BE SET A MINIMUM OF 5 FEET FROM MAINS AND SERVICES, AND 10 FEET FROM MANHOLES, VALVE VAULTS, VALVE BOXES, SERVICE BOXES, FIRE HYDRANTS, ETC.

MUNICIPAL/AGENCY APPROVAL STAMP

PLANT SCHEDULE

SYMBOL	CODE	QTY	BOTANICAL / COMMON NAME	SIZE	FIELD2
TREES					
	AFAB	1	Acer x freemanii 'Jeffersred' / Autumn Blaze® Freeman Maple	2.5' Cal.	B&B
	MAAM	1	Magnolia liliiflora x stellata 'Ann' / Ann Magnolia	6' Ht.	B&B
	PICB	1	Picea pungens 'Glauca Fastigiata' / Columnar Blue Spruce	5 gal.	Pot
EVERGREEN TREES					
	TOTE	10	Thuja occidentalis 'Techny' / Techny Arborvitae	10' Ht.	B&B
ORNAMENTAL TREES					
	CCRP	1	Cotinus coggygria 'Royal Purple' / Royal Purple Smoke Tree	6' Ht.	B&B
	SYIS	7	Syringa reticulata 'Ivory Silk' / Ivory Silk Japanese Tree Lilac	2.5' Cal.	B&B
SHRUBS					
	BUGV	8	Buxus x 'Green Velvet' / Green Velvet Boxwood	3 gal.	Cont.
	HPBP	9	Hydrangea paniculata 'LVOBO'™ / Bobo Panicle Hydrangea	3 gal.	Cont.
	TDDY	3	Taxus x media 'Densiformis' / Dense Anglo-Japanese Yew	5 gal.	Cont.
GRASSES					
	CAKF	22	Calamagrostis x acutiflora 'Karl Foerster' / Karl Foerster Feather Reed Grass	1 gal.	Cont.
PERENNIALS					
	ALMO	18	Allium x 'Millenium' / Millenium Ornamental Onion	1 gal.	Cont.
	RULG	14	Rudbeckia fulgida 'Little Goldstar' / Little Goldstar Coneflower	1 gal.	Cont.
GROUND COVERS					
	PAGC	24	Pachysandra terminalis 'Green Carpet' / Green Carpet Japanese Pachysandra	flat	Contractor to verify quantity 16" o.c.



C&M LAND LLC.
CLIENT ADDRESS
CITY, STATE

WEST STREET EXECUTIVE HOMES
241 N. WEST STREET
NAPERVILLE, IL 60540
FINAL LANDSCAPE PLAN

NO.	DATE	REVISION DESCRIPTION	BY
1	12/17/2023	PER CLIENT'S COMMENTS	DG
2	12/17/2023	PER CLIENT'S COMMENTS	DG
3	03/29/2024	PER CITY'S COMMENTS	DG
4	03/27/2024	PER CITY'S COMMENTS	RP

DESIGNED BY: DG
REVIEWED BY: KP
DATE: 11/30/2023
PRJ#: 5942-300-32

Weaver
Consultants
Group

OFFICE LOCATION:
WEAVER CONSULTANTS GROUP
1314 BOND STREET, SUITE 100
NAPERVILLE, ILLINOIS 60563
(630) 717-4848
wcgrp.com



LANDSCAPE PREPARED BY WEAVER CONSULTANTS GROUP UNDER DIRECTION OF KENNETH M. PRICE

