

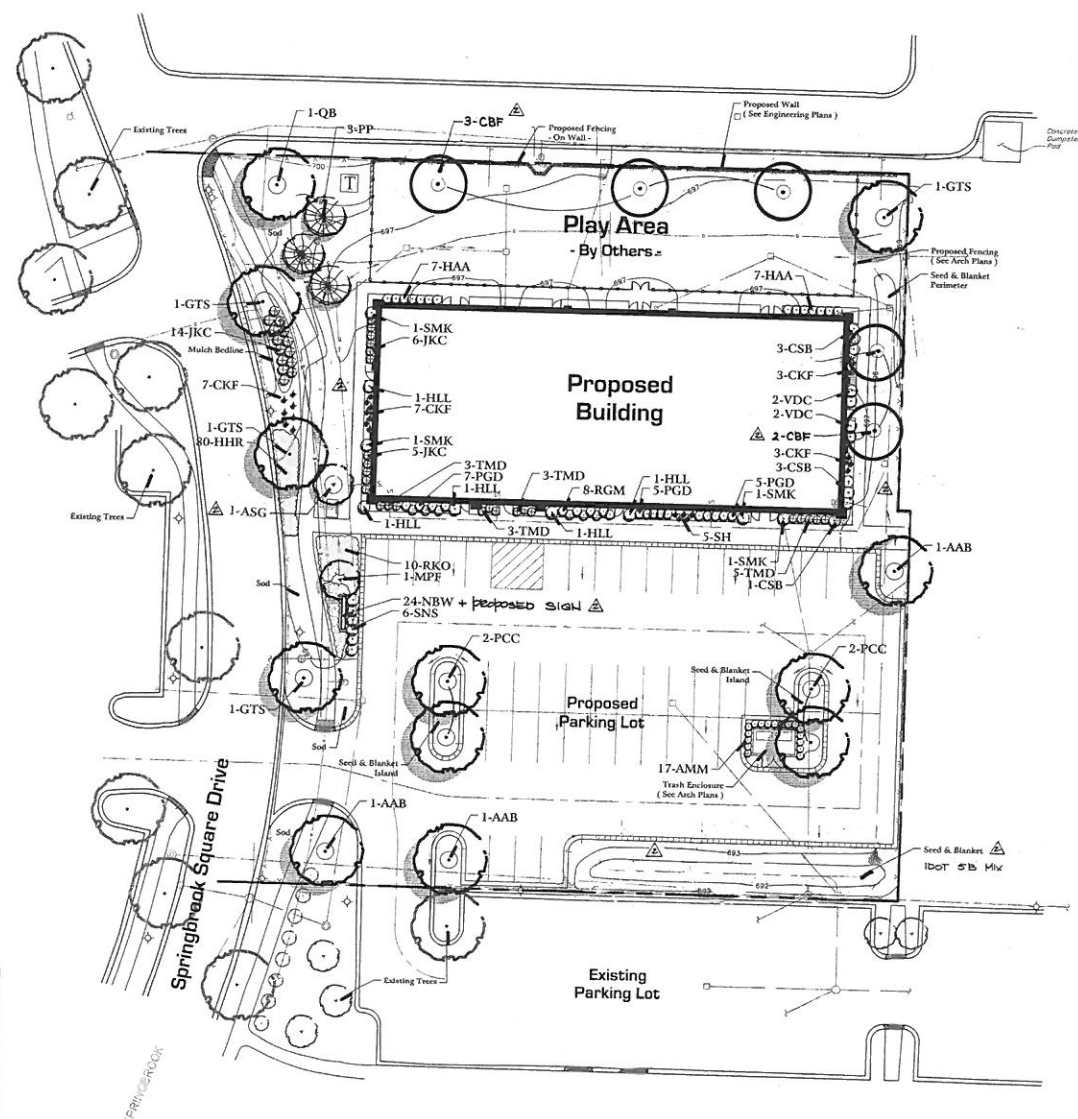
# PLANT & MATERIAL LIST:

Code	Scientific Name	Common Name	Size	Qty	Remarks
<b>SHADE TREES</b>					
AAB	<i>Aspen &amp; Freeman's Autumn Blaze®</i>	Autumn Blaze Maple	3.5"	3	B&B
GTS	<i>Gleditsia triacanthos 'Innocent 360™'</i>	Whitefly Honeylocust	2.5"	4	B&B
PCCK	<i>Pyrus calleryana 'Chantrelle'</i>	Chantrelle Pear	3.5"	4	B&B
WB	<i>Quercus bicolor</i>	Bronze White Oak	2.5"	1	B&B
CDP	<i>Calliandra lanceata 'Trinitaria'</i>	Colombian European Hortisiam	2.5"	3	B&B
<b>ORNAMENTAL TREES</b>					
MPF	<i>Malus 'Redstar'</i>	Pinkflower Flowering Crab	2.5"	1	B&B
ASG	<i>Amelanchier alnifolia</i>	April Snowflower	4"	1	B&B, Multi Stem
<b>EVERGREEN TREES</b>					
EP	<i>Thuja 'Green gem'</i>	Colorado Green Spruce	8"	3	B&B
<b>EVERGREEN SHRUBS</b>					
TMD	<i>Taxus media 'Dumoulinii'</i>	Doyle Tree	24"	14	B&B
PC	<i>Juniperus 'horizontalis' 'Kilgus Compacta'</i>	Kilgus's Compact Juniper	18"	23	1 Galton Container
<b>ORNAMENTAL SHRUBS</b>					
AMM	<i>Artemisia tridentata 'Silver Queen'</i>	Tridentate Beauty Chokeberry	24"	12	5 Galton Container
CSB	<i>Cornus sericea 'White Star'</i>	Baldwin's Star Dogwood	24"	7	5 Galton Container
HAA	<i>Hydrangea arborescens 'Annabelle'</i>	Annabelle Hydrangea	14"	21	2 Galton Container
HEL	<i>Hydrangea 'Little Lime'</i>	Little Lime Hydrangea	30"	2	5 Galton Container
PCH	<i>Prunella 'Purpurea'</i>	Gold Drop Prunella	18"	17	5 Galton Container
ECM	<i>Elaeagnus 'Ocean Pearl'</i>	Ocean Pearl Silver Currant	18"	8	5 Galton Container
RPO	<i>Rosa 'Nocturna'</i>	Nocturna Rose	18"	10	5 Galton Container
SHK	<i>Spirea 'Little Miss Fifi'</i>	Little Miss Spirea	20"	4	5 Galton Container
SNS	<i>Spiraea japonica 'Seminole'</i>	Seminole Spirea	24"	6	5 Galton Container
VDC	<i>Viburnum dentatum 'Cherokee'</i>	Viburnum Blue Muffin	30"	4	5 Galton Container
<b>PERENNIAL &amp; ORNAMENTAL GRASSES</b>					
CFZ	<i>Callirhoe icariensis 'Red Rover'</i>	Red Rover Prairie Flower	1 G	20	Container
HRH	<i>Hemerocallis 'Happy Returns'</i>	Happy Returns Daylily	1 G	50	Container
MW	<i>Muhlenbergia 'Blue Heaven'</i>	Blue Heaven Muhlenbergia	1 G	24	Container
SH	<i>Shibboleth heterophylla</i>	Public Dandelion	1 G	3	Container
<b>MISCELLANEOUS</b>					
Soil	Mixwell Soil Bed	BY	455		See Connection Notes
Seed and Blanket	Seed and Blanket	BY	850		See Connection Notes
Shredded Hardwood Bark Mulch	Shredded Hardwood Bark Mulch	CV	29		See Connection Notes

# CONSTRUCTION NOTES:

- Soil all Parkways and turf areas as noted with an approved blend of Improved Kentucky Bluegrass Sod with a mineral soil bed.
- Drill seed all remaining turf areas as noted and cover with an 8-75 Straw Erosion Control Blanket and stage in place. Seed shall be applied at a rate of 200 lbs. per acre.
- Lawn seed mix shall be as follows:
  - 70% Improved Kentucky Bluegrass (minimum three varieties)
  - 20% Improved Perennial Ryegrass (minimum two varieties with endophytes)
  - 10% Creeping Red Fescue
- Final grading shall provide slopes which are smooth and continuous. Positive drainage shall be provided in all areas.
- Prior to turf installation all areas shall be fertilized with a 12-12-12 granular fertilizer at a rate of 400 lbs. per acre.
- Prepare perennial, ornamental grass, groundcover and annual flower beds with 1 CY mushroom compost per 100 SF, installed to an 8" depth.
- Mulch all trees, shrub, perennial & ornamental grass beds with a minimum of three inches shredded hardwood bark mulch.
- Mulch all groundcover and annual beds with minimum of one inch pinebark fines.
- All bed lines and tree spacing require a 4" deep spaded edge between lawn and mulch areas.
- All evergreen (conifers) trees and shrubs must be grown in a natural shape and not sheared.
- Plant material shall be nursery grown and be either balled and burlapped or container grown. Sizes and spreads on plant lists represent minimum requirements.
- Quantity lists are supplied as a convenience. Contractor shall verify all quantities, and in case of a discrepancy, the plant list shall prevail.
- The Landscape Contractor shall adjust plant locations in field to maintain appropriate spacing from fire hydrants, light poles, all utility structures, driveways and sidewalks. Approval of the Landscape Architect is required when field adjustments to be implemented do not conform to the intent of the plans.
- Contractor shall report any discrepancies in the field to the Landscape Architect and/or Owner.
- The Landscape Contractor shall verify locations of all underground utilities prior to digging, is required to Contact J.U.L.I.E. (1.800.852.9125) and any other public or private agency necessary for utility location 48 hours prior to construction.
- Where underground utilities exist, all field adjustments must be approved by the landscape architect.
- The Landscape Contractor shall water plant material, seed and sod areas until the plants have become adequately established and until final acceptance by the owner. Owner to provide all supplemental watering and proper care and maintenance of all plant materials, seed and sod areas after acceptance of Landscape Contractors work.
- No plants are to be changed or substituted without the approval of the Landscape Architect and the City of Naperville.
- Landscape Contractor shall guarantee all material and labor for a period of one year from the date of final acceptance and shall repair any defects and replace all dead plants material as required during the warranty period.
- Tree shall be set back a minimum of ten (10) feet horizontally from utility structures, including, but not limited to, manholes, valve vaults, valve boxes, fire hydrants, transformers and switch cans. Trees shall be set back a minimum of five (5) feet horizontally from sanitary sewer, water services and underground electric cable. Approval of the Landscape Architect is required when field adjustments to be implemented do not conform to the intent of the plans.
- Parkway Trees must be offset 5 feet from all storm sewer.
- No trees, shrubs or obstacles will be allowed 10" in front, 5" on the sides, and 7' to the rear of the electrical transformer.

See Sheet L102 for Complete Landscape Specifications  
 See Sheet L101 for Planting Details



Land Planning  
 Landscape Architecture  
 Environmental Site Design  
 804 WASHINGTON ST., WAPORVILLE, IL 60067 - 630.369.3800 Fax 630.369.3844

# Little Minds Learning Center

Springbrook Square - Lot 9  
 Naperville, Illinois

# Final Landscape Plan (#17-10000015)

Northstar  
 Commercial Partners  
 1999 Broadway - Suite 770  
 Denver, CO. 80202

Scale: 1" = 20'0"

Revisions:  
 5.24.2017 Per City Review dated 5/24/17  
 4.28.2017 Per Revised Site Plan

original issue date: 10 February 2017

drawn by:  
 checked by:  
 project no.: 27003  
 sheet no.:

Site Plan : Site Plan Layout as per Engineering Plans prepared by CEMCON, Ltd. and dated April 2017.