

Preliminary Landscape Plan

NORTHGATE OF NAPERVILLE

Naperville, Illinois

May 20, 2026

CONSULTANTS:



LANDSCAPE ARCHITECT:
 GARY R. WEBER ASSOCIATES, INC
 402 W. LIBERTY DRIVE
 WHEATON, ILLINOIS 60187



CIVIL ENGINEER:
 V3 COMPANIES
 7325 JANES AVENUE
 WOODRIDGE, ILLINOIS 60517



LOCATION MAP

SCALE: 1"=600'

INDEX OF SHEETS

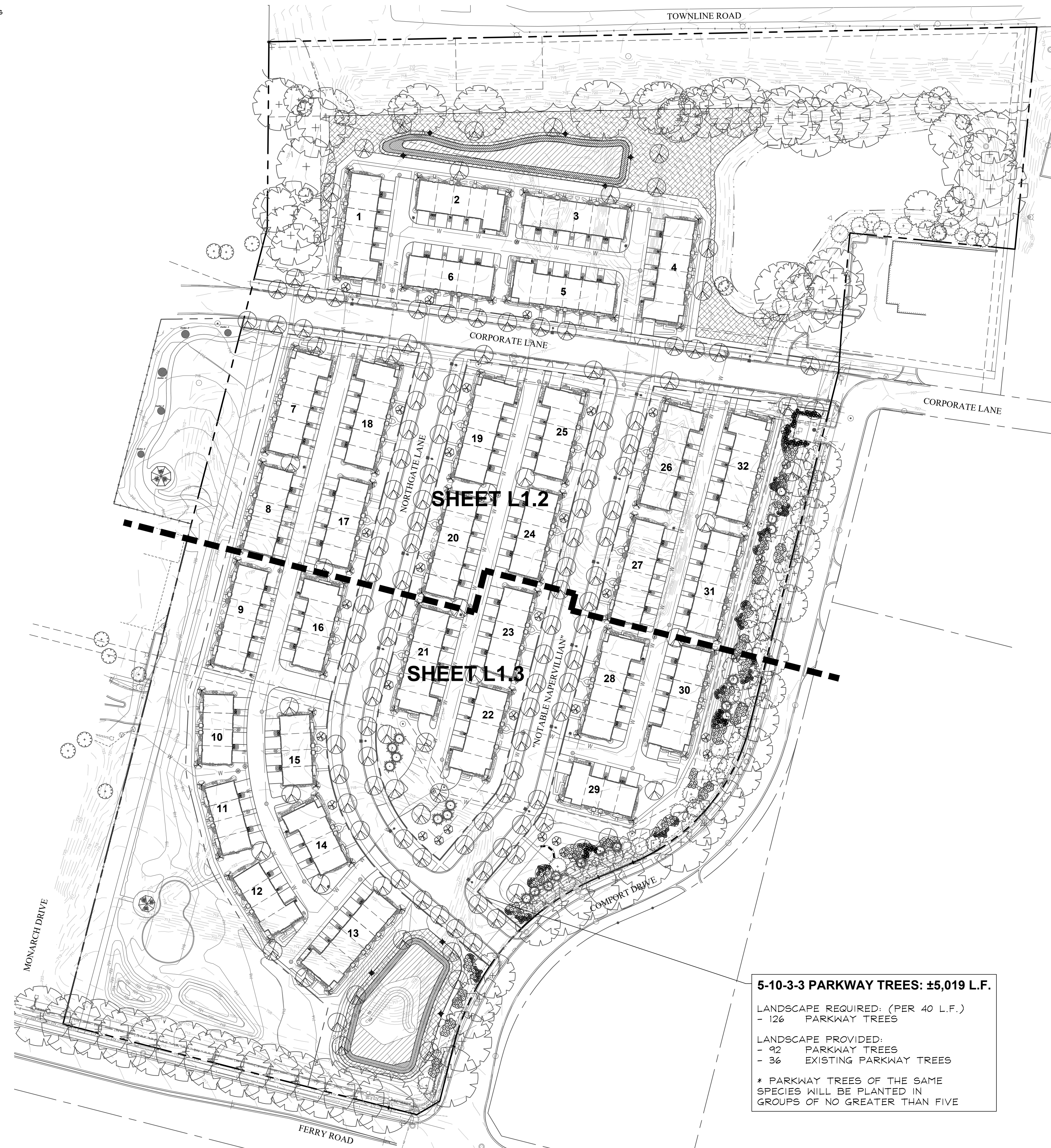
SHEET NO.	DESCRIPTION
L1.0	COVER SHEET
L1.1	OVERALL LANDSCAPE PLAN
L1.2	LANDSCAPE PLAN
L1.3	LANDSCAPE PLAN
L1.4	LANDSCAPE DETAILS
L1.5	TYPICAL FOUNDATION PLANS
L1.6	TYPICAL FOUNDATION PLANS
L1.7	TREE PRESERVATION PLAN
L1.8	TREE INVENTORY
L1.9	TREE INVENTORY

REPRESENTATIVE PLANT LIST

Key	Botanical/Common Name	Size	Remarks	Key	Botanical/Common Name	Size	Remarks
	SHADE TREES				PERENNIALS AND ORNAMENTAL GRASSES		
	Acer miyabei 'Morton'	2 1/2" Cal.			Allium 'Summer Beauty'	#1	18" O.C.
	STATE STREET MAPLE				SUMMER BEAUTY ONION		
	Acer saccharum 'Green Mountain'	2 1/2" Cal.			Calamagrostis x acutiflora 'Karl Foerster'	#1	30" O.C.
	GREEN MOUNTAIN SUGAR MAPLE				FEATHER REED GRASS		
	Celtis occidentalis	2 1/2" Cal.			Calamintha nepeta ssp. nepeta	#1	18" O.C.
	COMMON HACKBERRY				LESSER CALAMINT		
	Gymnocladus dioica 'Espresso-JFS'	2 1/2" Cal.			Hemerocallis 'Happy Returns'	#1	18" O.C.
	ESPRESSO KENTUCKY COFFEETREE				HAPPY RETURNS DAYLILY		
	Quercus bicolor 'JFS-KW12'	2 1/2" Cal.			Penstemon digitalis 'Husker Red'	#1	18" O.C.
	AMERICAN DREAM OAK				HUSKER RED BEARDTONGUE		
	Quercus macrocarpa	2 1/2" Cal.			Panicum virgatum 'Northwind'	#1	30" O.C.
	BUR OAK				NORTHWIND SWITCHGRASS		
	Quercus rubra	2 1/2" Cal.			Salvia x sylvestris 'Mainacht'	#1	18" O.C.
	RED OAK				MAY NIGHT WOOD SAGE		
	Tilia tomentosa 'Sterling'	2 1/2" Cal.			Schizachyrium scoparium 'Twilight Zone'	#1	24" O.C.
	STERLING SILVER LINDEN				TWILIGHT LITTLE BLUESTEM		
	Ulmus carpinifolia 'New Horizon'	2 1/2" Cal.			Sporobolus heterolepis	#1	24" O.C.
	NEW HORIZON SMOOTHLEAF ELM				PRAIRIE DROPSIDE		
	ORNAMENTAL TREES				GROUNDCOVERS		
	Amelanchier x grandiflora	6' Ht.	Multi-Stem		Geranium x cantabrigiense 'Blokova'	#SP4	12" O.C.
	APPLE SERVICEBERRY				BLOKOVO GERANIUM		
	Betula nigra 'Cully'	6' Ht.	Multi-Stem		Vinca minor 'Dart's Blue'	#SP4	12" O.C.
	HERITAGE RIVER BIRCH				DART'S BLUE PERIWINKLE		
	Cercis canadensis	6' Ht.	Multi-Stem				
	EASTERN REDBUD						
	Malus 'Prairifire'	6' Ht.	Multi-Stem				
	PRAIRIFIRE CRABAPPLE						
	Syringa reticulata 'Ivory Silk'	6' Ht.	Multi-Stem				
	IVORY SILK JAPANESE TREE LILAC						
	EVERGREEN TREES						
	Picea abies	8' Ht.					
	NORWAY SPRUCE						
	Picea glauca var. densata	8' Ht.					
	BLACK HILLS SPRUCE						
	Picea omorika	8' Ht.					
	SERBIAN SPRUCE						
	Pinus strobus	8' Ht.					
	EASTERN WHITE PINE						
	Thuja occidentalis 'Techny'	8' Ht.					
	TECHNY ARBORVITAE						
	DECIDUOUS SHRUBS						
	Cornus sericea 'Bailey'	36" Tall	5' O.C.				
	BAILEY'S REDTWIG DOGWOOD						
	Fothergilla gardenii	24" Tall	3' O.C.				
	DWARF FOTHERGILLA						
	Hydrangea paniculata 'SMHPLQF'	24" Tall	3' O.C.				
	LITTLE QUICK FIRE HYDRANGEA						
	Itea virginica 'Little Henry'	24" Tall	3' O.C.				
	LITTLE HENRY VIRGINIA SWEETSPIRE						
	Physocarpus opulifolius 'Seward'	30" Tall	4' O.C.				
	SUMMER WINE NINEBARK						
	Syringa meyeri 'Paladin'	24" Tall	4' O.C.				
	DWARF KOREAN LILAC						
	Viburnum x juddii	36" Tall	4' O.C.				
	JUDD VIBURNUM						
	Weigela florida 'Bramwell'	24" Tall	3' O.C.				
	FINE WINE WEIGELA						
	EVERGREEN SHRUBS						
	Buxus 'Glennae'	24" Wide	4' O.C.				
	CHICAGO LAND GREEN BOXWOOD						
	Ilex glabra 'Shamrock'	24" Wide	3' O.C.				
	SHAMROCK INKBERRY						
	Thuja occidentalis 'Woodwardii'	24" Wide	4' O.C.				
	GLOBE ARBORVITAE						

Parkway Summary

Corporate Lane East	1,025 LF
	180 LF
	825 LF
Corporate Lane North	876 LF
	85 LF
	39 LF
	39 LF
	39 LF
	106 LF
	138 LF
	236 LF
	117 LF
	38 LF
Northgate Lane	1,363 LF
	150 LF
	153 LF
	409 LF
	561 LF
	42 LF
	48 LF
Polar Lane	1,269 LF
	660 LF
	432 LF
	177 LF
Ferry Lane	486 LF
	486 LF



GENERAL LANDSCAPE NOTES

- Contractor shall verify underground utility lines and is responsible for any damage.
- Contractor shall verify all existing conditions in the field prior to construction and shall notify landscape architect of any variance.
- Material quantities shown are for contractors convenience only. The Contractor must verify all material and supply sufficient materials to complete the job per plan.
- The landscape architect reserves the right to inspect trees and shrubs either at place of growth or at site before planting, for compliance with requirements of variety, size and quality.
- Work shall conform to American Standard for Nursery Stock, State of Illinois Horticultural Standards, and Local Municipal requirements.
- Contractor shall secure and pay for all permits, fees, and inspections necessary for the proper execution of this work and comply with all codes applicable to this work.
- See General Conditions and Specifications for landscape work for additional requirements.
- Plan is consistent with the conservation easement restrictions as outlined in documents R2005-102300 and R2005-102300 and the landscape easement as outlined in documents R2014-111352 and R2014-111359.
- Landscaping complies with separation distances as specified in Section 5-10-3.10 of the Municipal Code.

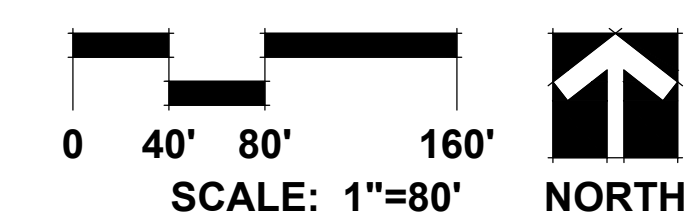
NATIVE AREA LEGEND

Key	Description
	EMERGENT PLANTINGS
	WET MEADOW SEED MIX & EROSION CONTROL BLANKET
	LOW PROFILE PRAIRIE SEED MIX & EROSION CONTROL BLANKET
	NATIVE AREA SIGN

EXISTING TREE LEGEND

	DECIDUOUS TREE TO BE PRESERVED
	EVERGREEN TREE TO BE PRESERVED

OVERALL LANDSCAPE PLAN



GRWA
GARY R. WEBER ASSOCIATES, INC.
 LAND PLANNING
 ECOLOGICAL CONSULTING
 LANDSCAPE ARCHITECTURE
 402 W. LIBERTY DRIVE
 WHEATON, ILLINOIS 60187
 PHONE: 630-668-7197
 www.grwainc.com

CLIENT

M/I HOMES
 2135 CITY GATE LANE
 SUITE 620
 NAPERVILLE, IL 60563

CIVIL ENGINEER

V3 COMPANIES
 7325 JANES AVENUE
 WOODRIDGE, ILLINOIS 60517

NORTHGATE OF NAPERVILLE
 NAPERVILLE, ILLINOIS
PRELIMINARY LANDSCAPE PLAN
OVERALL LANDSCAPE PLAN

2	2026.05.20
1	2026.04.01
REVISION	DATE

DATE	2025.12.17
PROJECT NO.	MI22208
DRAWN	CLE
CHECKED	DHS
SHEET NO.	

L1.1



GARY R. WEBER
ASSOCIATES, INC.
LAND PLANNING
ECOLOGICAL CONSULTING
LANDSCAPE ARCHITECTURE
402 W. LIBERTY DRIVE
WHEATON, ILLINOIS 60187
PHONE: 630-668-7197
www.grwainc.com

CLIENT

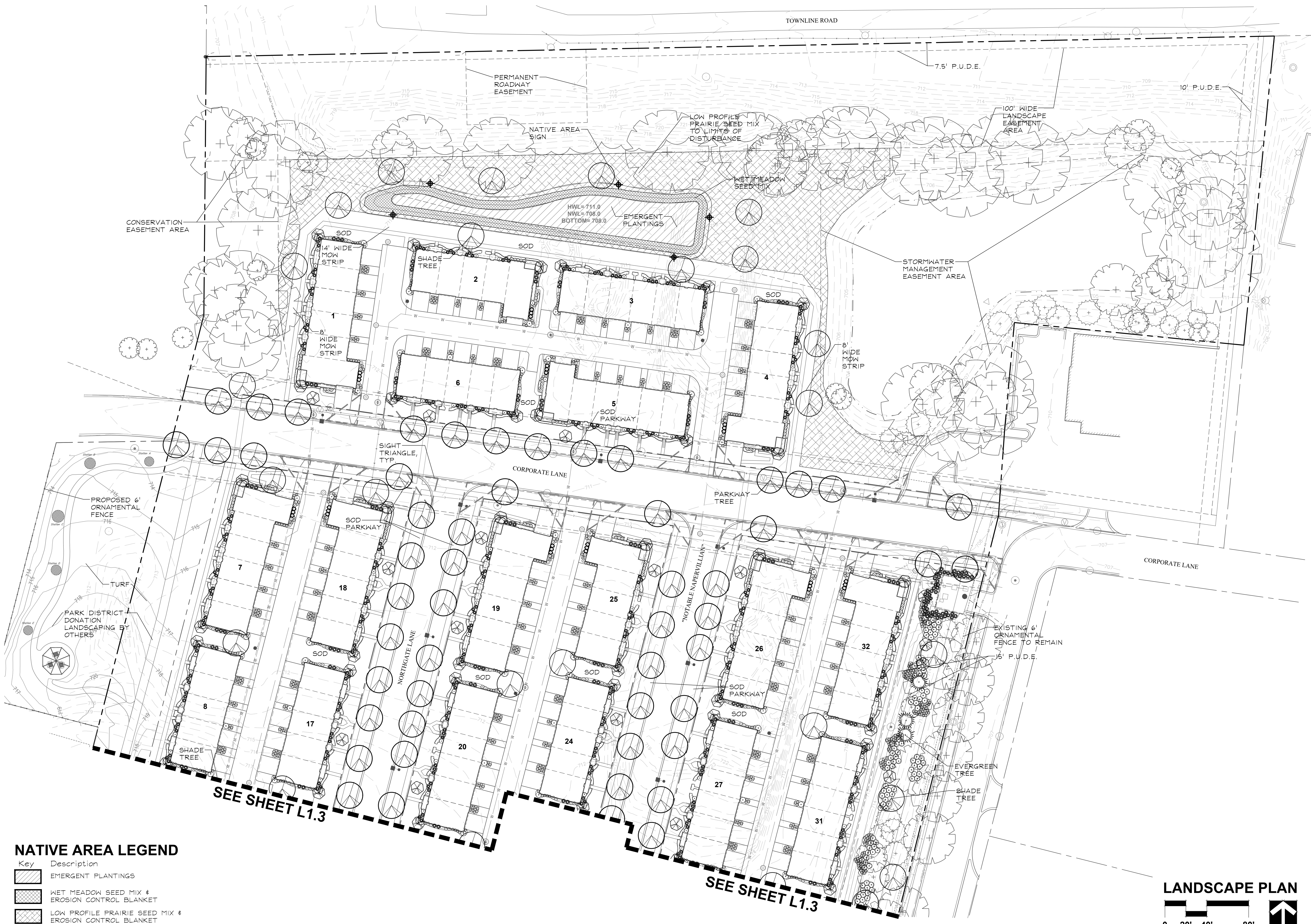


M/I HOMES
2135 CITY GATE LANE
SUITE 620
NAPERVILLE, IL 60563

CIVIL ENGINEER

V3 COMPANIES
7325 JANES AVENUE
WOODRIDGE, ILLINOIS 60517

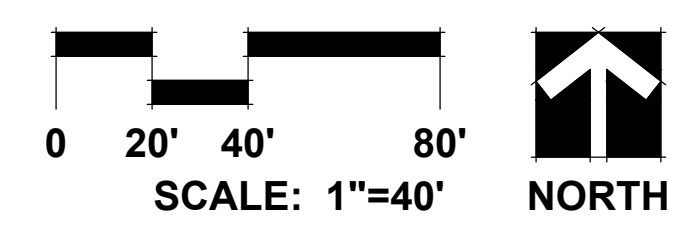
NORTHGATE OF NAPERVILLE
NAPERVILLE, ILLINOIS
PRELIMINARY LANDSCAPE PLAN
LANDSCAPE PLAN



NATIVE AREA LEGEND

Key	Description
	EMERGENT PLANTINGS
	WET MEADOW SEED MIX & EROSION CONTROL BLANKET
	LOW PROFILE PRAIRIE SEED MIX & EROSION CONTROL BLANKET
	NATIVE AREA SIGN

LANDSCAPE PLAN



REVISION	DATE
2	2026.05.20
1	2026.04.01

DATE	2025.12.17
PROJECT NO.	MI22208
DRAWN	CLE
CHECKED	DHS
SHEET NO.	

L1.2

I:\Projects\MI22208\Acad\MI22208_002_02PLP.dwg 5/20/2026 1:52 PM



GARY R. WEBER
ASSOCIATES, INC.
LAND PLANNING
ECOLOGICAL CONSULTING
LANDSCAPE ARCHITECTURE
402 W. LIBERTY DRIVE
WHEATON, ILLINOIS 60187
PHONE: 630-668-7197
www.grwainc.com

CLIENT

M/I HOMES
2135 CITY GATE LANE
SUITE 620
NAPERVILLE, IL 60563

CIVIL ENGINEER

V3 COMPANIES
7325 JANES AVENUE
WOODRIDGE, ILLINOIS 60517

NORTHGATE OF NAPERVILLE
NAPERVILLE, ILLINOIS
PRELIMINARY LANDSCAPE PLAN
LANDSCAPE PLAN



NATIVE AREA LEGEND

Key	Description
	EMERGENT PLANTINGS
	WET MEADOW SEED MIX & EROSION CONTROL BLANKET
	LOW PROFILE PRAIRIE SEED MIX & EROSION CONTROL BLANKET
	NATIVE AREA SIGN

LANDSCAPE PLAN



REVISION	DATE
2	2026.05.20
1	2026.04.01

DATE	2025.12.17
PROJECT NO.	MI22208
DRAWN	CLE
CHECKED	DHS
SHEET NO.	

L1.3



GARY R. WEBER
ASSOCIATES, INC.

LAND PLANNING
ECOLOGICAL CONSULTING
LANDSCAPE ARCHITECTURE

402 W. LIBERTY DRIVE
WHEATON, ILLINOIS 60187
PHONE: 630-668-7197
www.grwainc.com

CLIENT



CIVIL ENGINEER

V3 COMPANIES
7325 JANES AVENUE
WOODRIDGE, ILLINOIS 60517

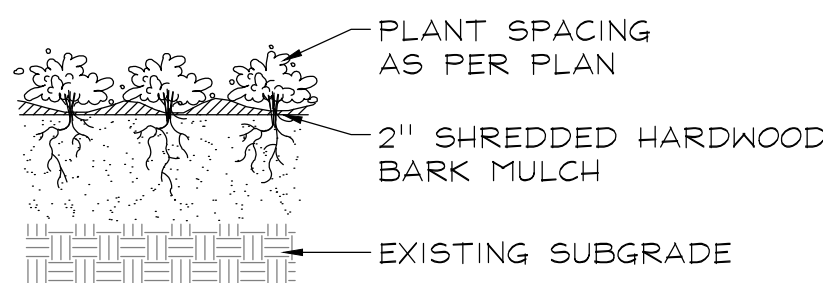
NORTHGATE OF NAPERVILLE
 NAPERVILLE, ILLINOIS
 PRELIMINARY LANDSCAPE PLAN
LANDSCAPE DETAILS

2	2026.05.20
1	2026.04.01
REVISION	DATE

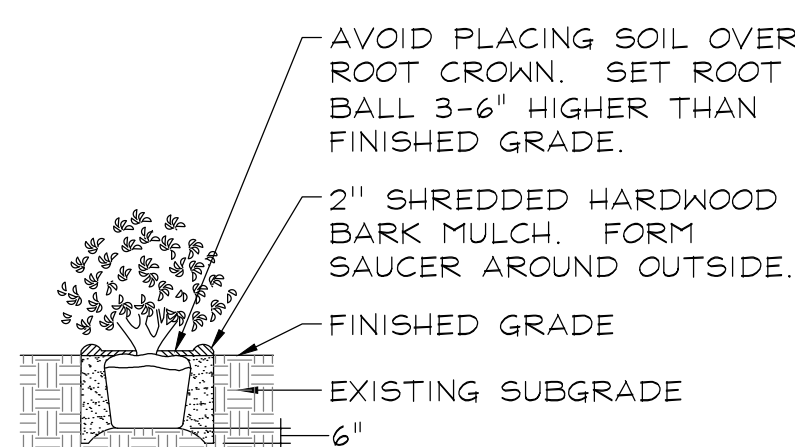
DATE	2025.12.17
PROJECT NO.	MI22208
DRAWN	CLE
CHECKED	DHS
SHEET NO.	

L1.4

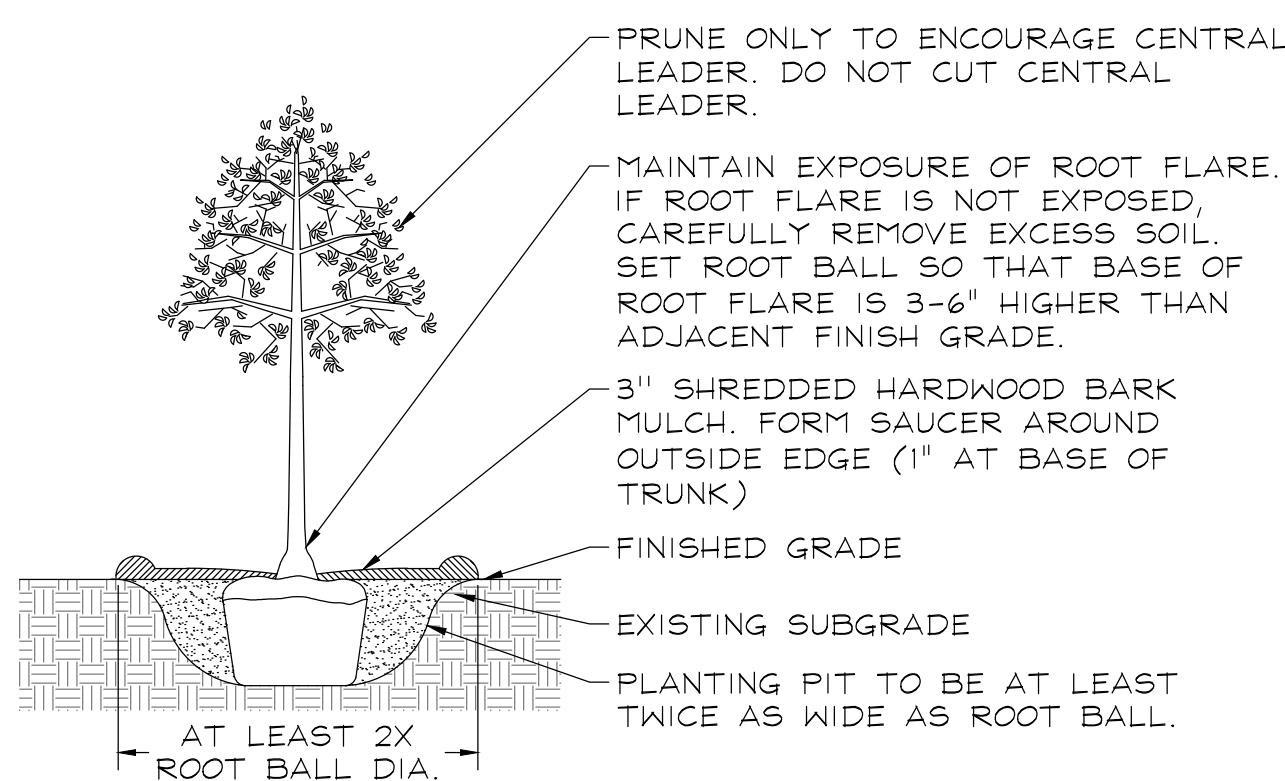
PLANTING DETAILS



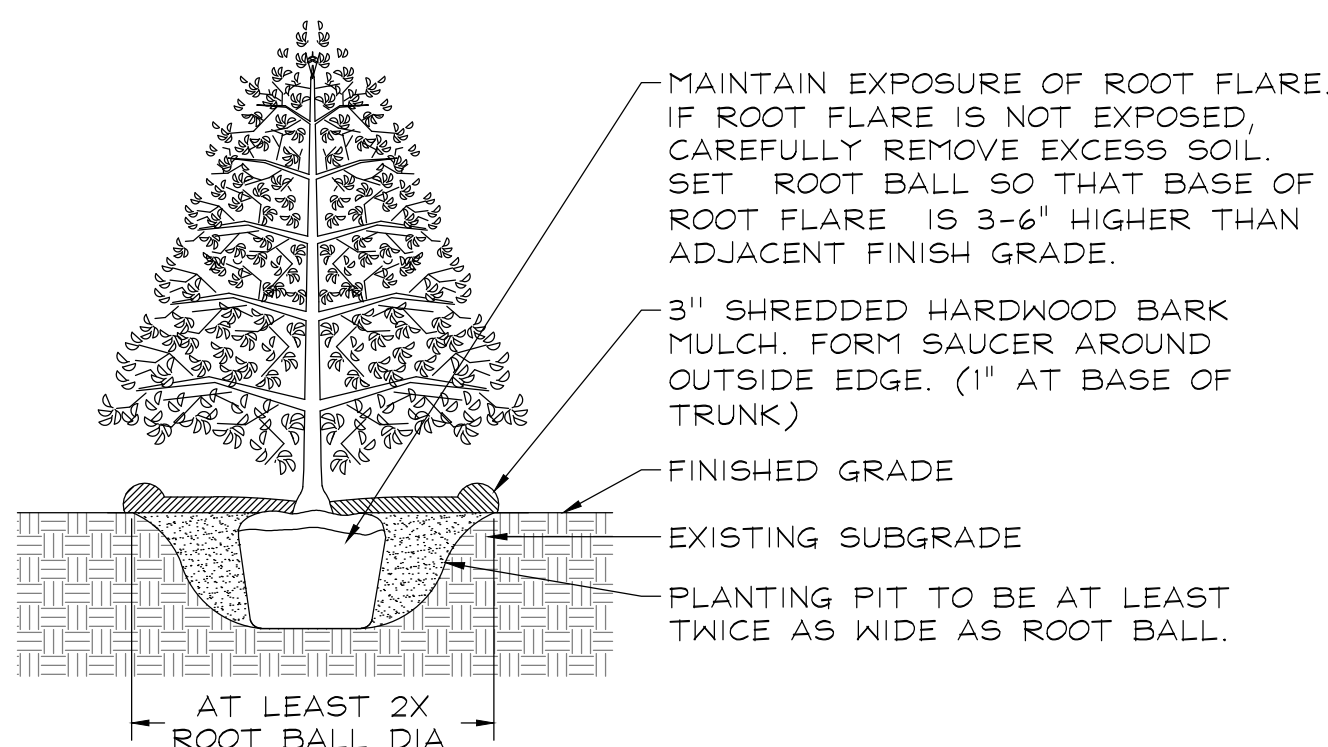
PERENNIALS AND GROUNDCOVERS
NOT TO SCALE



DECIDUOUS AND EVERGREEN SHRUBS
NOT TO SCALE



DECIDUOUS TREES
NOT TO SCALE



EVERGREEN TREES
NOT TO SCALE



Emergent Plant Seed and Plug Mixture

Stormwater basin bottoms from NWL to 12" below NWL

Botanical Name	Common Name	lbs / AC	Plugs / AC.
<i>Acorus americanus</i>	Sweet Flag	0.500	494
<i>Alisma subcordatum</i>	Water Plantain	1.250	
<i>Carex stricta</i>	Tussock Sedge	0.060	
<i>Eleocharis obtusa</i>	Blunt Spike Rush	0.250	494
<i>Iris virginica shrevei</i>	Blue Flag	0.500	988
<i>Juncus effusus</i>	Common Rush	0.500	494
<i>Leersia oryzoides</i>	Rice Cut Grass	1.250	
<i>Pontederia cordata</i>	Pickereel Weed	0.250	988
<i>Sagittaria latifolia</i>	Common Arrowhead	1.250	494
<i>Scirpus fluviatilis</i>	River Bulrush	0.500	988
<i>Scirpus cyperinus</i>	Wool Grass	0.250	494
<i>Schoenoplectus tabernaemontani</i>	Softstem Bulrush	0.500	988
<i>Sparganium eurycarpum</i>	Bur Reed	1.000	988
Total Emergent Wetland Mix		8.060	7410

Low Profile Prairie with Flowers Seed Mix

Upper basin slopes

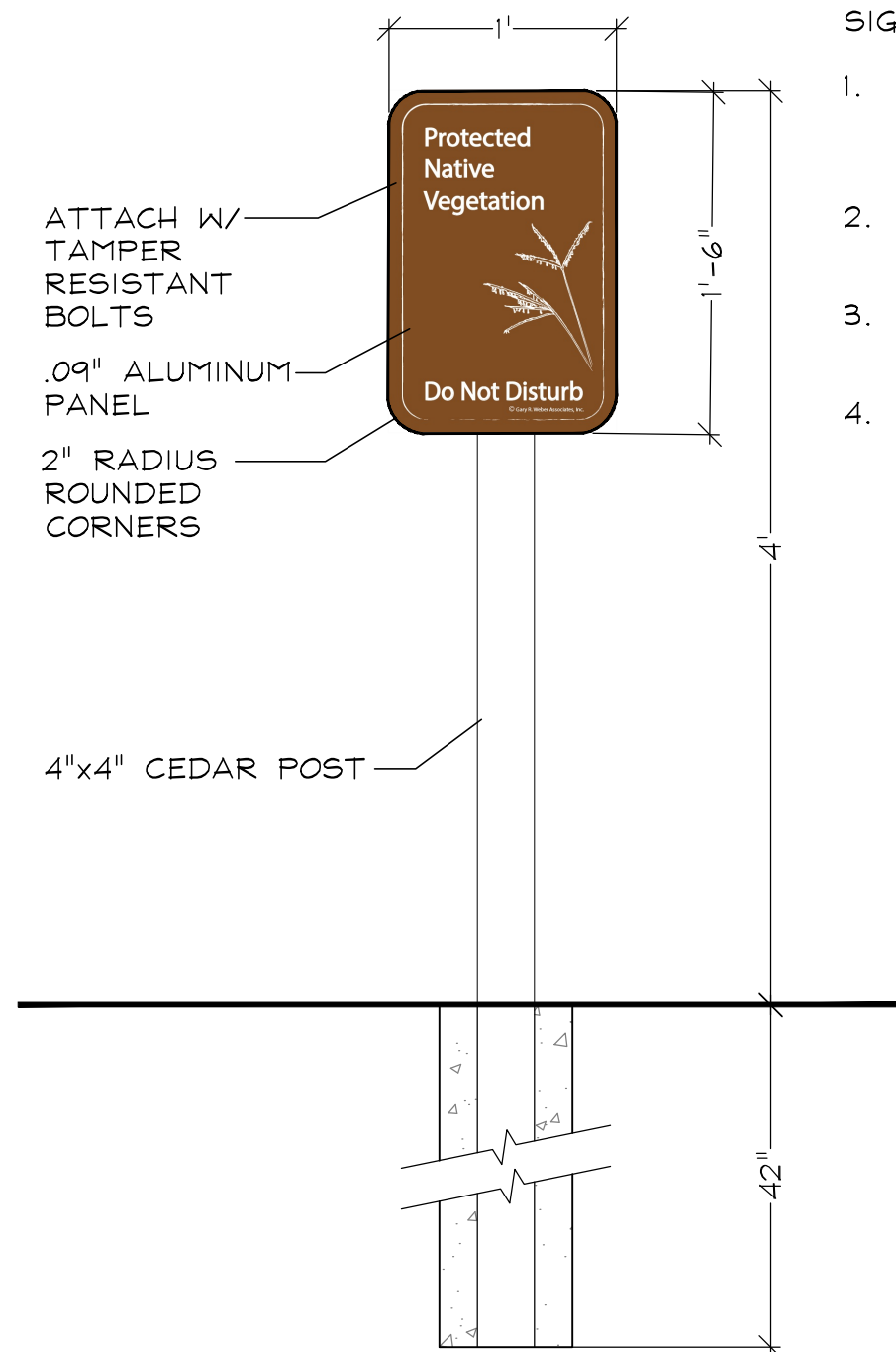
Botanical Name	Common Name	lbs / AC
Grasses		
<i>Bouteloua curtipendula</i>	Side Oats Grama	8.000
<i>Panicum virgatum</i>	Prairie Switch Grass	0.125
<i>Elymus canadensis</i>	Prairie Wild Rye	1.000
<i>Schizachyrium scoparium</i>	Little Bluestem	6.000
Total Grasses		15.125

Wildflowers/Broadleaves

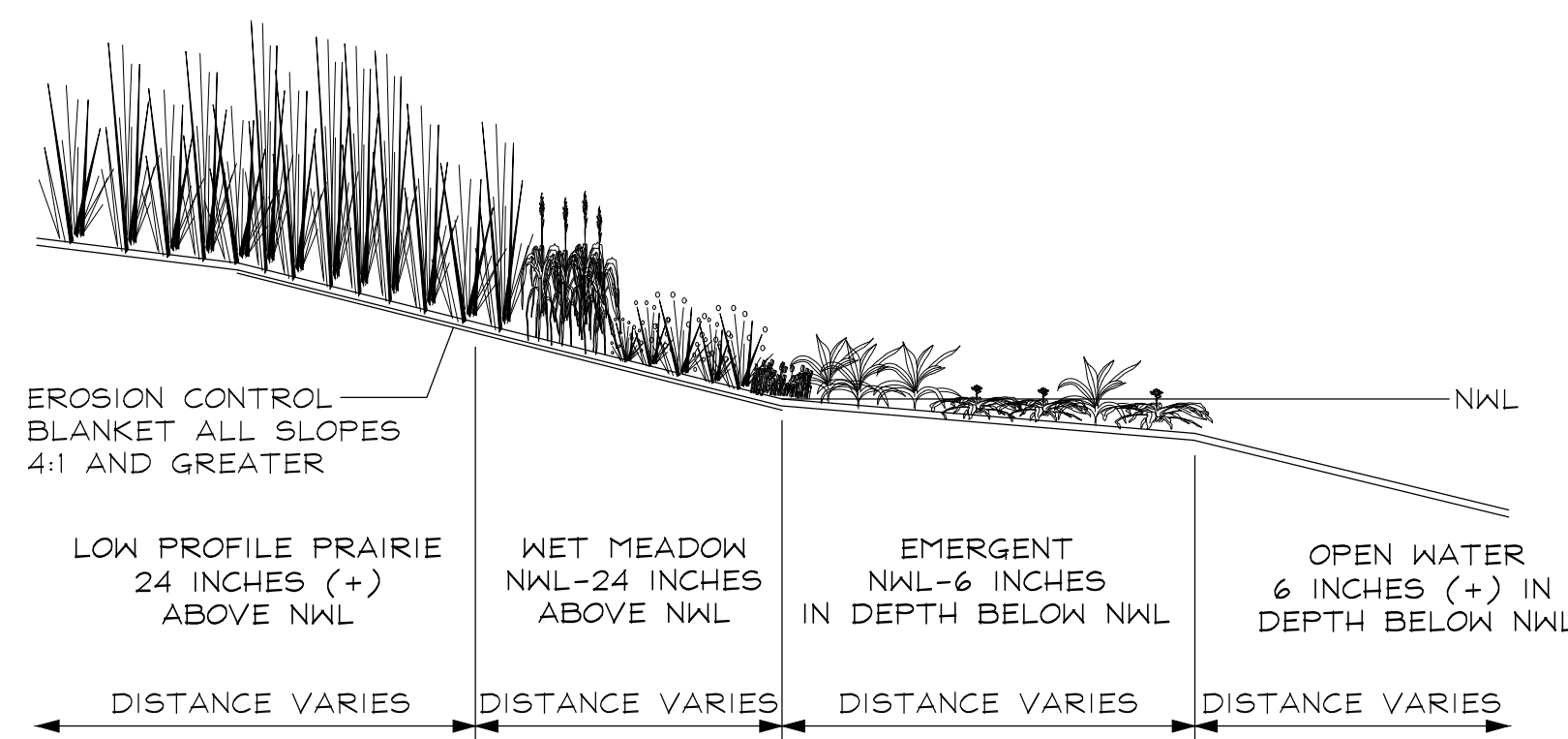
<i>Allium cernuum</i>	Nodding Wild Onion	0.190
<i>Amorpha canescens</i>	Lead Plant	0.125
<i>Asclepias tuberosa</i>	Butterflyweed	0.500
<i>Astragalus canadensis</i>	Canada Milk Vetch	0.063
<i>Coreopsis palmata</i>	Prairie Coreopsis	0.025
<i>Chamaecrista fasciculata</i>	Partridge pea	0.188
<i>Dalea purpurea</i>	Purple Prairie Clover	0.560
<i>Echinacea pallida</i>	Pale Purple Coneflower	1.000
<i>Echinacea purpurea</i>	Purple Coneflower	0.500
<i>Eryngium yuccifolium</i>	Rattlesnake Master	0.125
<i>Helicopsis helianthoides</i>	False Sunflower	1.000
<i>Lespedeza capitata</i>	Round-Headed Bush Clover	0.125
<i>Liatris aspera</i>	Rough Blazing Star	0.250
<i>Liatris pycnostachya</i>	Prairie Blazing Star	0.188
<i>Monarda fistulosa</i>	Prairie Bergamot	0.063
<i>Parthenium integrifolium</i>	Wild Quinine	0.016
<i>Penstemon digitalis</i>	Foglove Beard Tongue	0.125
<i>Petalostemum candidum</i>	White Prairie Clover	0.125
<i>Petalostemum purpureum</i>	Purple Prairie Clover	0.156
<i>Potentilla arguta</i>	Prairie Cinquefoil	0.031
<i>Pycnanthemum tenuifolium</i>	Slender Mountain Mint	0.031
<i>Ratibida pinnata</i>	Yellow Coneflower	0.125
<i>Rudbeckia hirta</i>	Black-Eyed Susan	0.500
<i>Rudbeckia subtomentosa</i>	Sweet Black-Eyed Susan	0.063
<i>Rudbeckia triloba</i>	Brown-eyed Susan	0.500
<i>Solidago rigida</i>	Stiff Goldenrod	0.250
<i>Symphotrichum laeve</i>	Smooth Blue Aster	0.063
<i>Symphotrichum novae-angliae</i>	New England Aster	0.250
<i>Tradescantia ohioensis</i>	Common Spiderwort	0.063
<i>Verbena stricta</i>	Hoary Vervain	0.125
<i>Zizia aurea</i>	Golden Alexanders	0.500
Total Forbs		7.825
Total Low Profile Prairie Seed Mix		22.950

SIGN NOTES:

- SIGN BACKGROUND COLOR: C=40, M=70, Y=100, K=28
SIGN FONT AND GRAPHIC COLOR: WHITE
- FONT STYLE: MYRIAD PRO
FONT SIZE: 116 PT.
- SIGN ARTWORK SHALL BE PROVIDED BY GARY R. WEBER ASSOCIATES, INC.
- CONTRACTOR TO SUBMIT SHOP DRAWING AND COLOR SAMPLE FOR THE PROTECTED NATIVE VEGETATION SIGN FOR REVIEW AND APPROVAL BY THE LANDSCAPE ARCHITECT PRIOR TO FABRICATION AND INSTALLATION.



NATIVE AREA SIGN DETAIL
SCALE: NTS



NATURALIZED STORMWATER BASIN SECTION
SCALE: NTS

NATIVE SEED MIXTURES

Temporary Cover Crop

Cover crops shall be installed in all planting areas containing dry mesic, mesic, and wet mesic soils to, stabilize soils, and combat weed pressure during the germination and establishment of the native seeding area.

Botanical Name	Common Name	lbs / AC
<i>Avena sativa</i>	Seed Oats	40.000

Wet Meadow Seed Mixture

Lower slopes of basin

Botanical Name	Common Name	lbs / AC
Grasses / Sedges		
<i>Carex bebbii</i>	Bebbs Oval Sedge	0.250
<i>Carex bicknellii</i>	Bicknells Sedge	0.125
<i>Carex brevior</i>	Plains Oval Sedge	0.250
<i>Carex cristatella</i>	Crested Oval Sedge	0.060
<i>Carex molesta</i>	Field Oval Sedge	0.250
<i>Carex normalis</i>	Spreading Oval Sedge	0.015
<i>Carex scoparia</i>	Pointed Broom Sedge	0.190
<i>Carex stipata</i>	Common Fox Sedge	0.060
<i>Carex vulpinoidea</i>	Brown Fox Sedge	0.250
<i>Elymus virginicus</i>	Virginia Wild Rye	3.000
<i>Glyceria striata</i>	Fowl Manna Grass	0.130
<i>Juncus dudleyi</i>	Dudleys Rush	0.020
<i>Juncus torreyi</i>	Torreys Rush	0.031
<i>Panicum virgatum</i>	Switch Grass	3.000
<i>Scirpus atrovirens</i>	Dark Green Bulrush	0.060
<i>Scirpus cyperinus</i>	Wool Grass	0.030
Total Grasses / Sedges		7.721

Wildflowers/Broadleaves

<i>Asclepias incamata</i>	Swamp Milkweed	0.125
<i>Bidens cernua</i>	Nodding Bur Marigold	0.190
<i>Boltonia asteroides</i>	False Aster	0.031
<i>Eupatorium perfoliatum</i>	Common Boneset	0.015
<i>Euthamia graminifolia</i>	Grassleaved Goldenrod	0.300
<i>Helenium autumnale</i>	Sneezeweed	0.063
<i>Hibiscus laevis</i>	Halberd-leaved Rose Mallow	0.380
<i>Iris virginica shrevei</i>	Blue Flag Iris	1.000
<i>Lobelia siphilitica</i>	Great Blue Lobelia	0.031
<i>Mimulus ringens</i>	Monkey Flower	0.031
<i>Physostegia virginiana</i>	Obedient Plant	0.031
<i>Pycnanthemum virginianum</i>	Common Mountain Mint	0.063
<i>Solidago rigida</i>	Stiff Goldenrod	0.125
<i>Symphotrichum novae-angliae</i>	New England Aster	0.250
<i>Vernonia fasciculata</i>	Common Ironweed	0.380
<i>Verbena hastata</i>	Blue Vervain	0.380
<i>Zizia aurea</i>	Golden Alexanders	0.500
Total Forbs		3.895
Total Wet Meadow Seed Mix		11.616



GARY R. WEBER
ASSOCIATES, INC.

LAND PLANNING
ECOLOGICAL CONSULTING
LANDSCAPE ARCHITECTURE

402 W. LIBERTY DRIVE
WHEATON, ILLINOIS 60187
PHONE: 630-668-7197
www.grwainc.com

CLIENT



M/I HOMES
2135 CITY GATE LANE
SUITE 620
NAPERVILLE, IL 60563

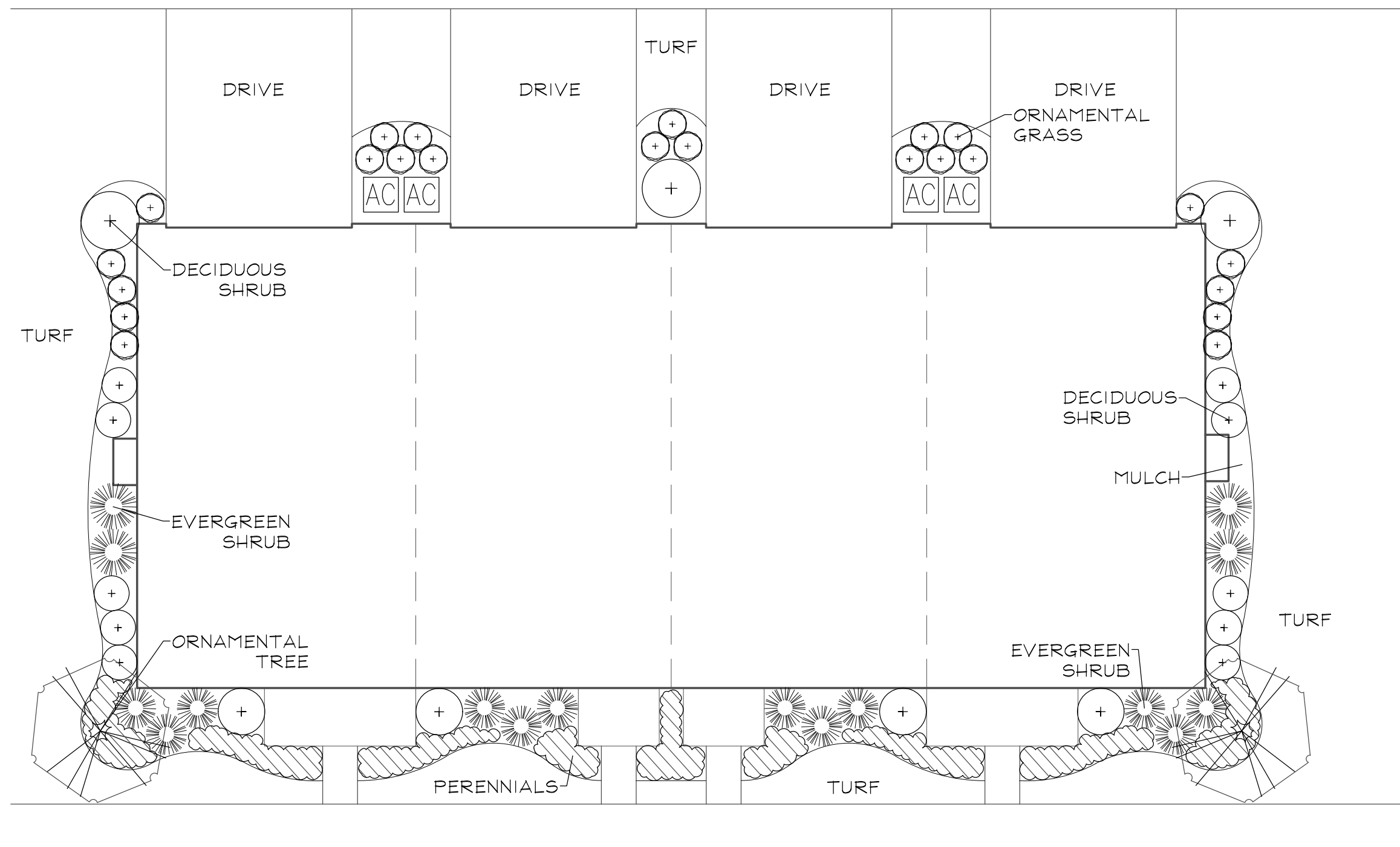
CIVIL ENGINEER

V3 COMPANIES
7325 JANES AVENUE
WOODRIDGE, ILLINOIS 60517

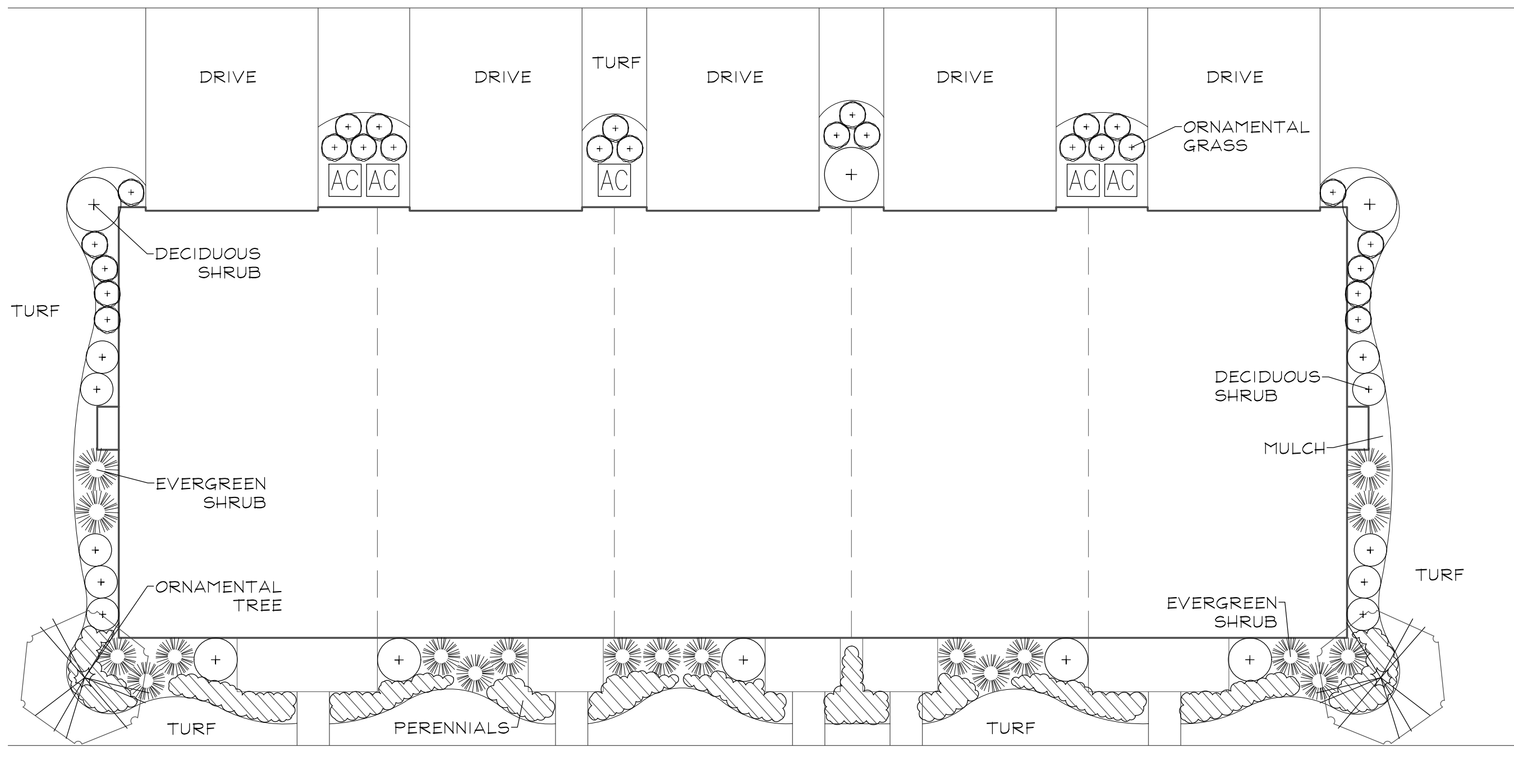
NORTHGATE OF NAPERVILLE
NAPERVILLE, ILLINOIS
PRELIMINARY LANDSCAPE PLAN
TYPICAL FOUNDATION PLANS

REPRESENTATIVE FOUNDATION PLANT LIST

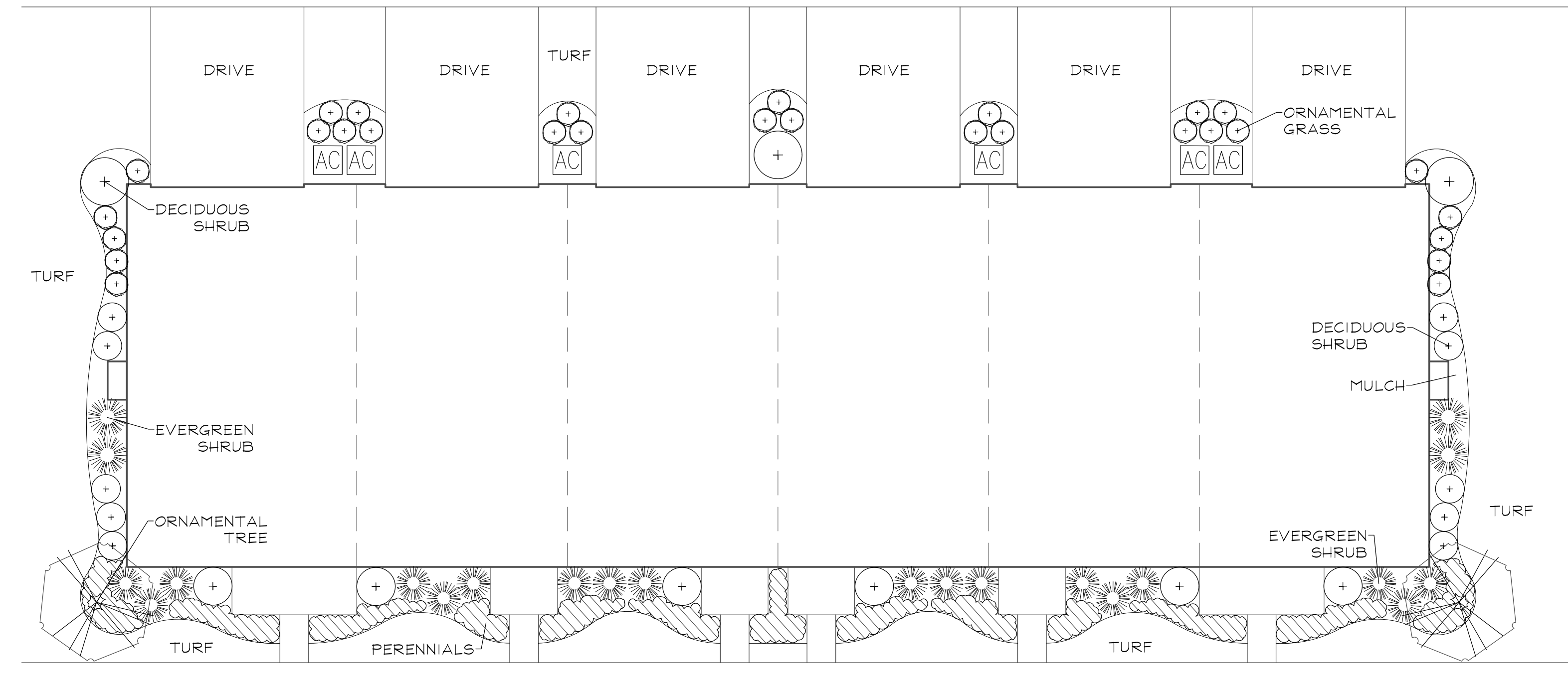
Key	Botanical/Common Name	Size	Remarks	Key	Botanical/Common Name	Size	Remarks
ORNAMENTAL TREES				ORNAMENTAL GRASSES			
	Amelanchier grandiflora APPLE SERVICEBERRY	6' Tall	Clump Form		Panicum virgatum 'Rotstrahlbusch' RED SWITCHGRASS	#1	30" O.C.
	Cornus mas CORNELIANCHERRY DOGWOOD	6' Tall	Clump Form		Pennisetum alapecuroides 'Hameln' DWARF FOUNTAIN GRASS	#1	24" O.C.
	Magnolia stellata 'Royal Star' ROYAL STAR MAGNOLIA	6' Tall	Clump Form		Sporobolus heterolepis PRAIRIE DROPSSEED	#1	24" O.C.
	Malus sargentii SARGENT CRABAPPLE	6' Tall	Clump Form		PERENNIALS		
	Syringa reticulata 'Ivory Silk' IVORY SILK JAPANESE TREE LILAC	6' Tall	Clump Form		Coreopsis verticillata 'Zagreb' ZAGREB COREOPSIS	#1	18" O.C.
EVERGREEN TREES					Hosta 'Patriot' PATRIOT HOSTA	#1	24" O.C.
	Thuja occidentalis 'Smaragd' EMERALD GREEN ARBORVITAE	5' Tall			Hemerocallis 'Rosy Returns' ROSY RETURNS DAYLILY	#1	18" O.C.
	Thuja occidentalis 'Nigra' DARK GREEN ARBORVITAE	8' Ht.	4' O.C.		Rudbeckia fulgida 'Goldsturm' BLACK-EYED SUSAN	#1	18" O.C.
DECIDUOUS SHRUBS					GROUNDCOVERS		
	Cornus sericea 'Bailey' BAILEY'S REDTWIG DOGWOOD	30" Tall	4' O.C.		Euonymus fortunei var. 'Coloratus' PURPLELEAF WINTERCREEPER	#SP4	12" O.C.
	Itea virginica 'Sprich' LITTLE HENRY VIRGINIA SWEETSPIRE	24" Tall	3' O.C.		Vinca minor 'Dart's Blue' DART'S BLUE PERIWINKLE	#SP4	12" O.C.
	Rosa 'Radrazz' KNOCKOUT ROSE	18" Tall	3' O.C.				
	Syringa meyeri 'Palibin' DWARF KOREAN LILAC	24" Tall	4' O.C.				
	Viburnum dentatum 'Christam' BLUE MUFFIN ARROWWOOD VIBURNUM	30" Tall	4' O.C.				
	Weigela florida 'Bramwell' FINE WINE WEIGELA	24" Tall	3' O.C.				
EVERGREEN SHRUBS							
	Buxus 'Glencoe' CHICAGOLAND GREEN BOXWOOD	24" Wide	4' O.C.				
	Ilex glabra 'Shamrock' SHAMROCK INKBERRY	24" Wide	3' O.C.				
	Thuja occidentalis 'Woodwardii' GLOBE ARBORVITAE	24" Wide	4' O.C.				



4 UNIT REAR-LOADED TOWNHOME FOUNDATION DETAIL
SCALE: 1"=10'



5 UNIT REAR-LOADED TOWNHOME FOUNDATION DETAIL
SCALE: 1"=10'



6 UNIT REAR-LOADED TOWNHOME FOUNDATION DETAIL
SCALE: 1"=10'

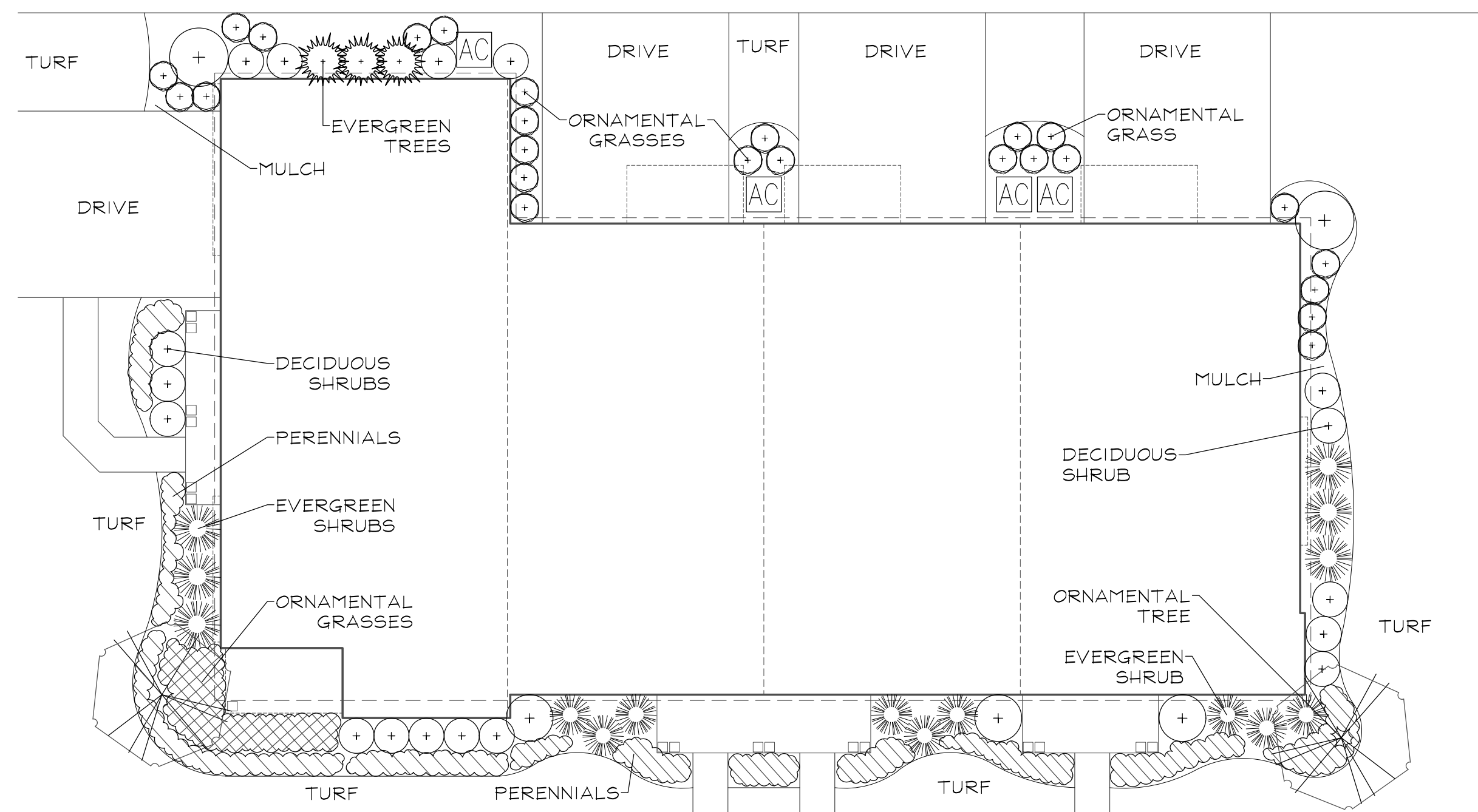
REVISION	DATE
2	2026.05.20
1	2026.04.01

DATE	2025.12.17
PROJECT NO.	M122208
DRAWN	CLE
CHECKED	DHS
SHEET NO.	

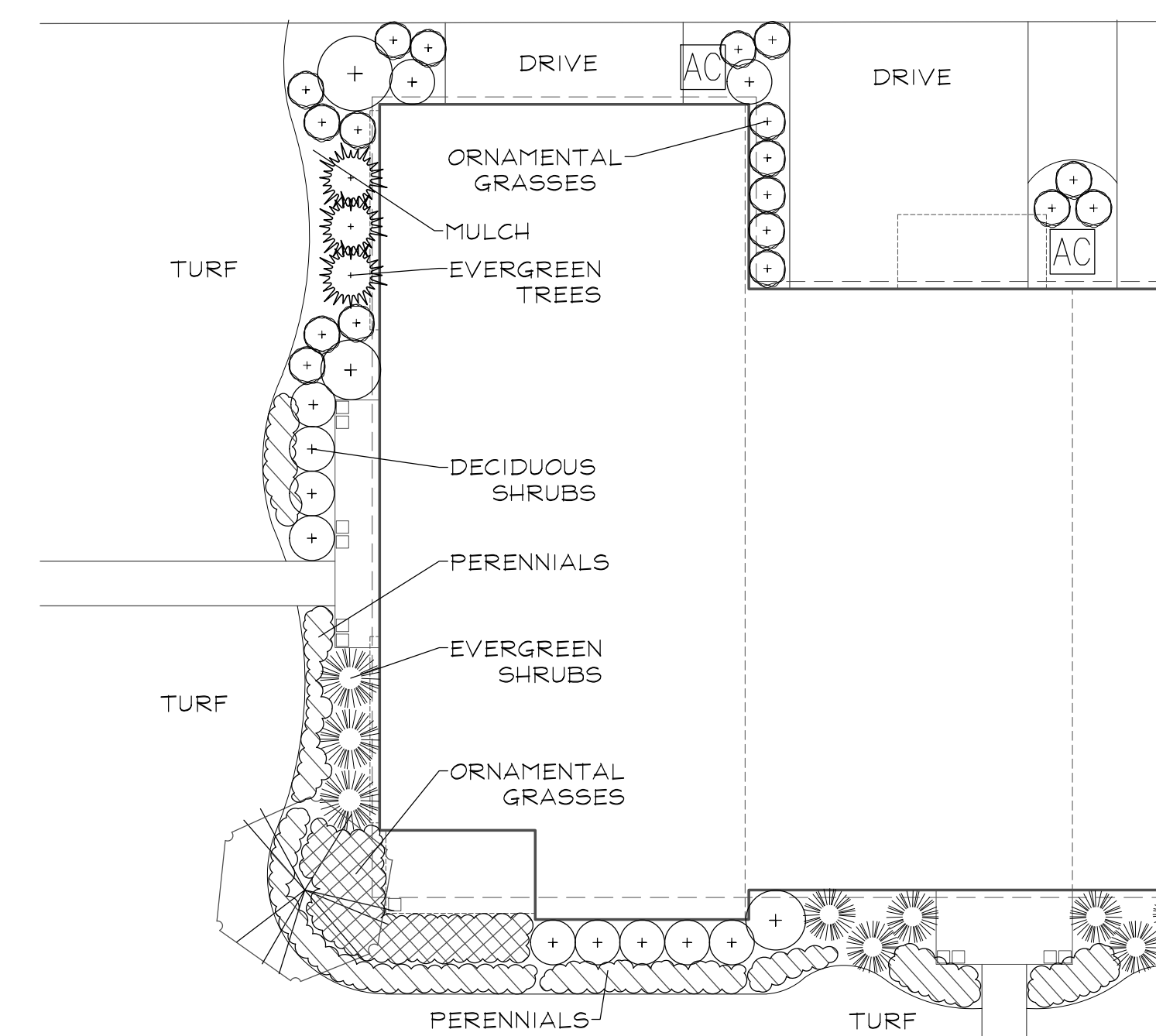
L1.5

REPRESENTATIVE FOUNDATION PLANT LIST

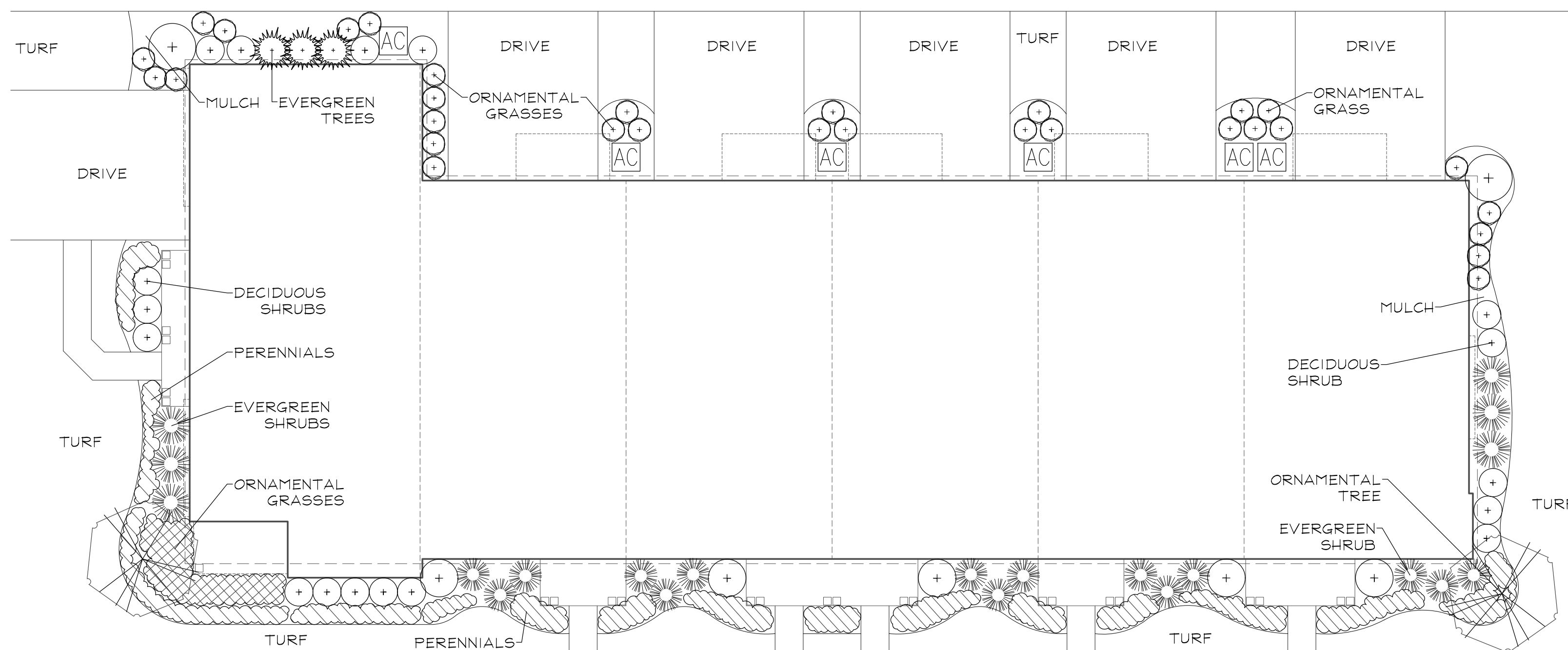
Key	Botanical/Common Name	Size	Remarks	Key	Botanical/Common Name	Size	Remarks	Key	Botanical/Common Name	Size	Remarks
	ORNAMENTAL TREES				DECIDUOUS SHRUBS				ORNAMENTAL GRASSES		
	Amelanchier grandiflora APPLE SERVICEBERRY	6' Tall	Clump Form		Cornus sericea 'Bailey' BAILEY'S REDTWIG DOGWOOD	30" Tall	4' O.C.		Panicum virgatum 'Rotstrahlbusch' RED SWITCHGRASS	#1	30" O.C.
	Cornus mas CORNELIANCHERRY DOGWOOD	6' Tall	Clump Form		Itea virginica 'Sprich' LITTLE HENRY VIRGINIA SWEETSPIRE	24" Tall	3' O.C.		Fernisetum alopecuroides 'Hornell' DWARF FOUNTAIN GRASS	#1	24" O.C.
	Magnolia stellata 'Royal Star' ROYAL STAR MAGNOLIA	6' Tall	Clump Form		Rosa 'Radrazz' KNOCKOUT ROSE	18" Tall	3' O.C.		Sporobolus heterolepis PRAIRIE DROPSSEED	#1	24" O.C.
	Malus sargentii SARGENT CRABAPPLE	6' Tall	Clump Form		Syringa meyeri 'Palibin' DWARF KOREAN LILAC	24" Tall	4' O.C.		PERENNIALS		
	Syringa reticulata 'Ivory Silk' IVORY SILK JAPANESE TREE LILAC	6' Tall	Clump Form		Viburnum dentatum 'Christom' BLUE MUFFIN ARROWWOOD VIBURNUM	30" Tall	4' O.C.		Coreopsis verticillata 'Zagreb' ZAGREB COREOPSIS	#1	18" O.C.
	EVERGREEN TREES				EVERGREEN SHRUBS				Hosta 'Patriot' PATRIOT HOSTA	#1	24" O.C.
	Thuja occidentalis 'Smaragd' EMERALD GREEN ARBORVITAE	5' Tall			Buxus 'Glencoe' CHICAGOLAND GREEN BOXWOOD	24" Wide	4' O.C.		Hemerocallis 'Rosy Returns' ROSY RETURNS DAYLILY	#1	18" O.C.
	Thuja occidentalis 'Nigra' DARK GREEN ARBORVITAE	8' Ht.	4' O.C.		Ilex glabra 'Shamrock' SHAMROCK INKBERRY	24" Wide	3' O.C.		Rudbeckia fulgida 'Goldsturm' BLACK-EYED SUSAN	#1	18" O.C.
					Thuja occidentalis 'Woodwardii' GLOBE ARBORVITAE	24" Wide	4' O.C.		Salvia nemorosa 'East Friesland' EAST FRIESLAND SALVIA	#1	18" O.C.
									GROUNDCOVERS		
									Euonymus fortunei var. 'Coloratus' PURPLELEAF WINTERCREEPER	#SP4	12" O.C.
									Vinca minor 'Dart's Blue' DART'S BLUE PERIWINKLE	#SP4	12" O.C.



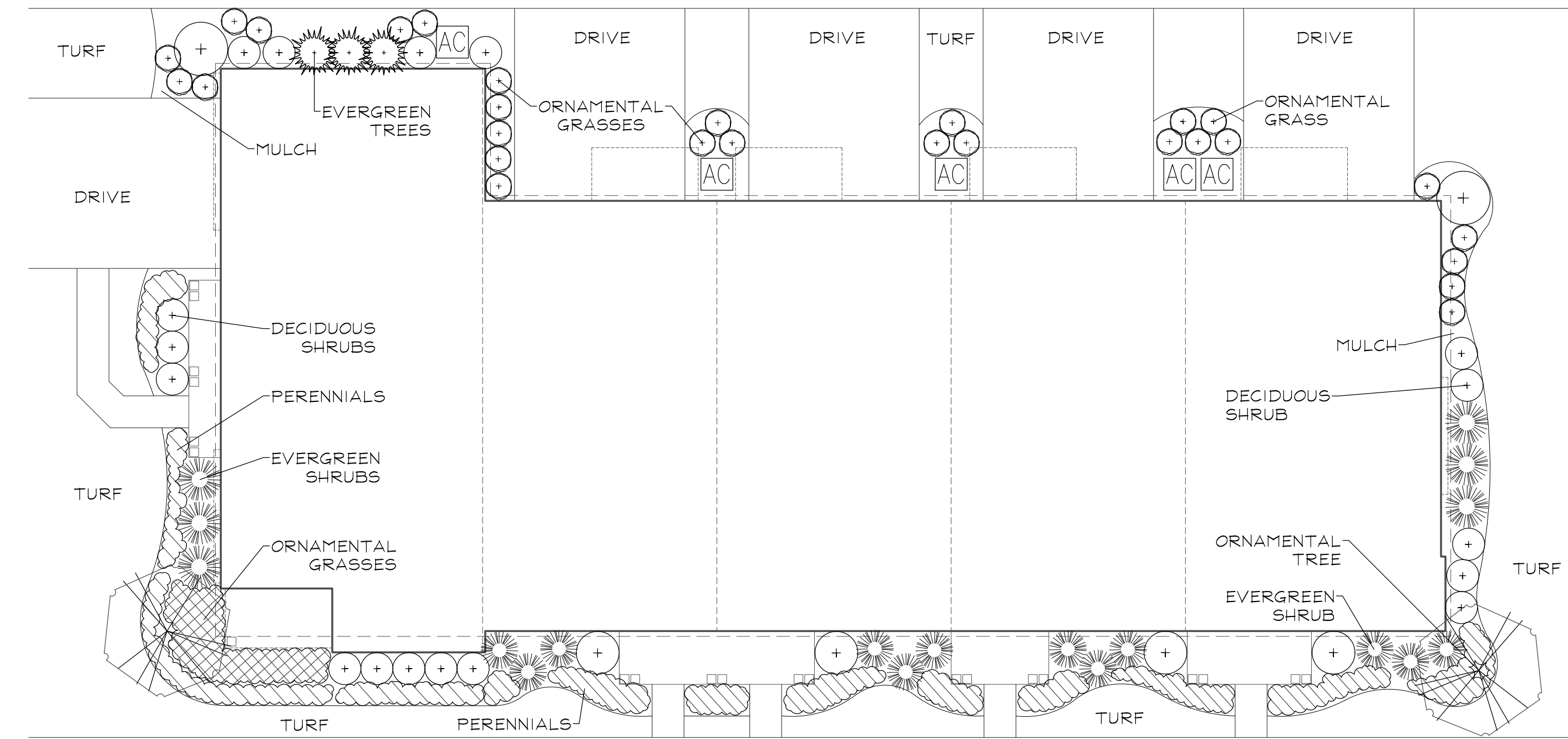
4 UNIT ALTERNATIVE REAR-LOADED TOWNHOME FOUNDATION DETAIL
SCALE: 1"=10'



ALTERNATIVE END UNIT FOUNDATION DETAIL
SCALE: 1"=10'



6 UNIT ALTERNATIVE REAR-LOADED TOWNHOME FOUNDATION DETAIL
SCALE: 1"=10'



5 UNIT ALTERNATIVE REAR-LOADED TOWNHOME FOUNDATION DETAIL
SCALE: 1"=10'



GARY R. WEBER
ASSOCIATES, INC.

LAND PLANNING
ECOLOGICAL CONSULTING
LANDSCAPE ARCHITECTURE
402 W. LIBERTY DRIVE
WHEATON, ILLINOIS 60187
PHONE: 630-668-7197
www.grwainc.com

CLIENT



M/I HOMES
2135 CITY GATE LANE
SUITE 620
NAPERVILLE, IL 60563

CIVIL ENGINEER

V3 COMPANIES
7325 JANES AVENUE
WOODRIDGE, ILLINOIS 60517

NORTHGATE OF NAPERVILLE
NAPERVILLE, ILLINOIS
PRELIMINARY LANDSCAPE PLAN
TYPICAL FOUNDATION PLANS

2	2026.05.20
1	2026.04.01
REVISION	DATE

DATE	2025.12.17
PROJECT NO.	M122208
DRAWN	CLE
CHECKED	DHS
SHEET NO.	

L1.6



GARY R. WEBER
ASSOCIATES, INC.
LAND PLANNING
ECOLOGICAL CONSULTING
LANDSCAPE ARCHITECTURE
402 W. LIBERTY DRIVE
WHEATON, ILLINOIS 60187
PHONE: 630-668-7197
www.grwainc.com

CLIENT



M/I HOMES
2135 CITY GATE LANE
SUITE 620
NAPERVILLE, IL 60563

CIVIL ENGINEER

V3 COMPANIES
7325 JANES AVENUE
WOODRIDGE, ILLINOIS 60517

NORTHGATE OF NAPERVILLE
PRELIMINARY LANDSCAPE PLAN
TREE PRESERVATION PLAN

2 2026.05.20
1 2026.04.01
REVISION DATE

DATE 2025.12.17
PROJECT NO. MI22208
DRAWN CLE
CHECKED DHS
SHEET NO.

L1.7

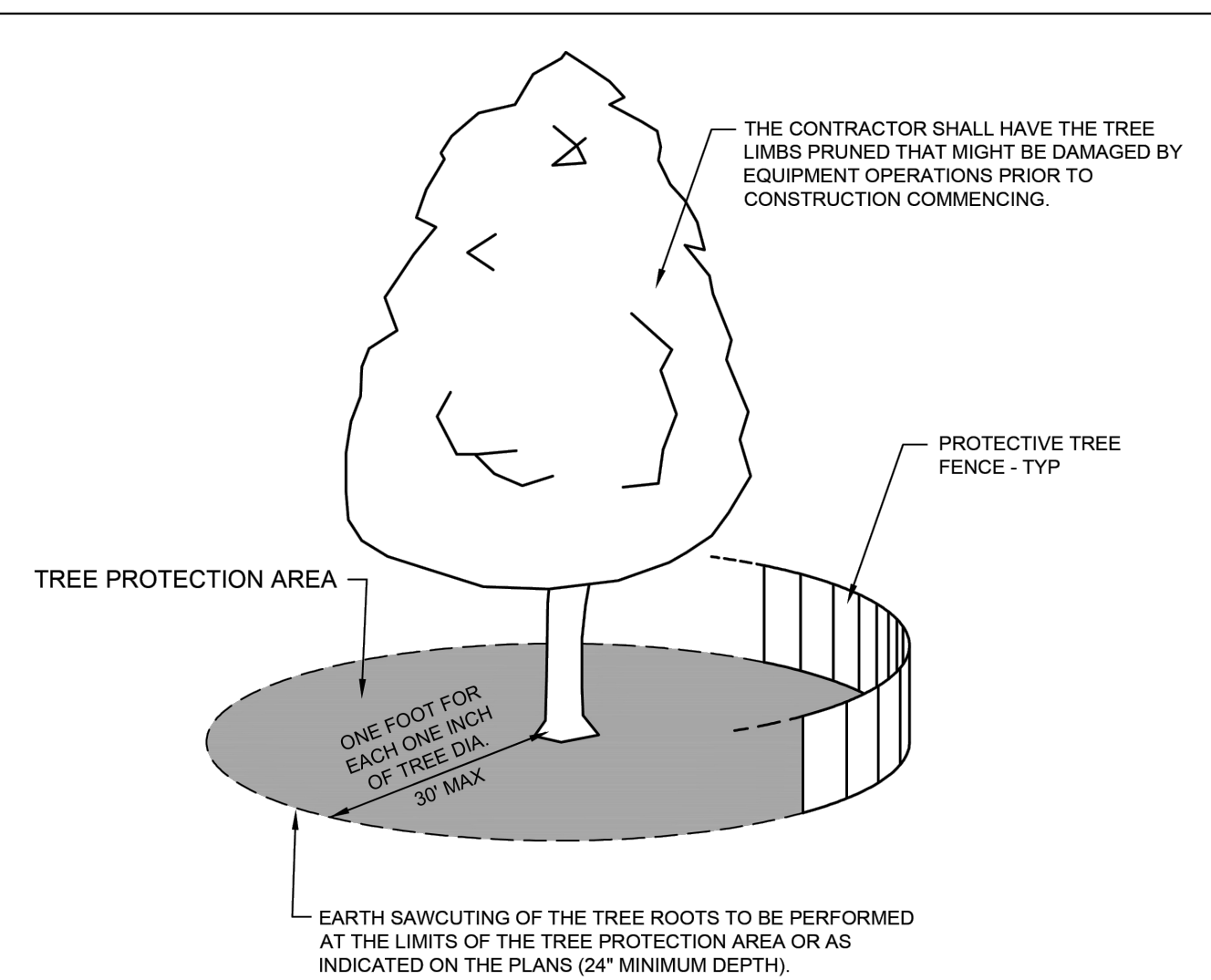
TREE PRESERVATION NOTES

- Property line shall be located and staked by a professional land surveyor prior to tree removal.
- Tree locations are shown utilizing a Trimble Catalyst GPS which does not constitute a professionally licensed survey. If survey-grade location and elevation of tagged trees is desired, a professional surveyor should be engaged.
- All trees with a trunk size of 4 inches in diameter or greater, as measured 5 feet above the ground; have been surveyed for the tree preservation plan.
- 48" high snow fence or wood barriers shall extend to the dripline of the tree or tree mass whenever possible, shall be installed before construction begins, and should not be removed until the completion of construction.
- Contractor shall take extreme care to protect the root system of existing trees. Should root pruning be necessary it shall not exceed 25% of the tree's root system and shall be done in accordance with recognized horticulture practices under the supervision of a professional arborist, Landscape Architect or Horticulturist.
- All accidental damage to existing trees that are to be preserved shall be promptly treated as required in accordance with recognized horticultural practices and the instructions of the professional Arborist, Landscape Architect or Horticulturist.
- Broken or badly bruised branches shall be removed with a clean cut. If recommended by the professional Arborist, Landscape Architect or Horticulturist.
- Care shall be exercised by the contractors to protect all overhead limbs and branches from damage by contact with material, machinery or equipment and by damage from engine exhaust.
- Contractors shall protect trees and vegetation against spills or discharge of fuels, lubricating oils, hydraulic fluids, anti-freeze and coolants, calcium chloride, lime and all other similar hydrocarbons, organic chemicals, and other materials which can be harmful.
- When underground utilities are proposed within 5' of a preserved tree trunk, they must be augered if possible.
- This plan is consistent with the conversation easement restrictions as outlined in documents R2005-102300 and R2005-102300 and the landscape easement as outlined in documents R2014-111352 and R2014-111359.

LEGEND

- 12.34 TREE TO BE PRESERVED
- 40.23 TREE TO BE REMOVED

TOTAL TREE COUNT: 536
OFFSITE TREES: 49
PRESERVED TREES: 105
REMOVED TREES: 382



NOTES:

- A TREE PROTECTION AREA SHALL BE ESTABLISHED AROUND A TREE A DISTANCE OF ONE FOOT FOR EACH ONE INCH OF TREE DIAMETER, UP TO A MAXIMUM OF 30 FEET.
- PROTECTIVE TREE FENCE SHALL BE INSTALLED AT THE LIMITS OF THE TREE PROTECTION AREA. THE FENCE SHALL BE HIGH ENOUGH SO AS TO BE VISIBLE TO ALL CONSTRUCTION PERSONNEL.
- GRADE CHANGES, UTILITY TRENCHES, STORAGE OF CONSTRUCTION MATERIAL, DUMPING OF WASTE, OR OPERATION OR STORAGE OF ANY EQUIPMENT SHALL NOT BE ALLOWED WITHIN THE TREE PROTECTION AREA.
- AUGURING IS REQUIRED IF A UTILITY MUST BE INSTALLED WITHIN THE TREE PROTECTION AREA. AUGURED UTILITIES MUST BE A MINIMUM OF 24 INCHES BELOW GRADE.
- ALL TREES TO BE SAVED WHICH HAVE BEEN SUBJECTED TO CONSTRUCTION ACTIVITY WITHIN THE TREE PROTECTION AREA SHOULD BE SELECTIVELY THINNED 10% BY AN ARBORIST SKILLED AT THE SELECTIVE THINNING PROCEDURE. NONE OF THE TREES SHALL BE TOPPED, HEADED BACK, SKINNED (REMOVAL OF THE INTERIOR BRANCHES), OR CLIMBED WITH SPIKES. ALL DEAD WOOD SHOULD BE REMOVED TO AVOID HAZARD.
- IT IS RECOMMENDED THAT FOLLOWING CONSTRUCTION, TREES BE MAINTAINED IN THEIR NATIVE CONDITION. NO LAWN SHOULD BE PLACED AROUND THE TREES. IT IS RECOMMENDED THAT THE AREA BE MULCHED WITH 2 INCHES OF DECOMPOSED LEAVES AND 2 INCHES OF WOOD CHIPS OR BARK.

	City of Naperville	LANDSCAPE 10
	STANDARD DETAIL	
TREE PROTECTION		790.10
REVISED: 08/01/2018	SHEET 1 OF 1	

RATING AND SURVEY CRITERIA

- Trees measured at 4.5 ft. above the ground - DBH (diameter Breast Height)
- All trees 4" DBH and above tagged. Dead trees were tagged for removal. Invasive shrubs were not tagged.
- Health Rating:

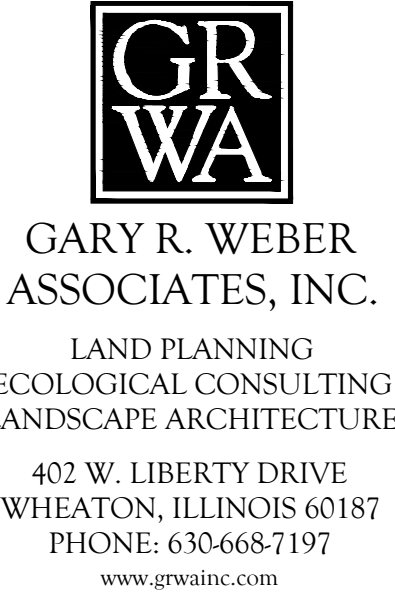
Rating	Description	Criteria
1	Excellent	Less than 10% dead wood, typical growth for species, no observed defects
2	Good	Less than 20% dead wood, minor defects, sound structure, no decay
3	Fair	Less than 30% dead wood, minor crown die-back, minor trunk damage or cavities
4	Fair to Poor	Approximately 30-50% dead wood, lacking full crown, minor disease evidence, trunk damage
5	Poor	Over 50% dead wood, lacking full crown, disease or decay evident, structural damage/cavities
6	Dead	Less than 10% living wood, greater than 50% missing bark, adventitious growth only, decay

TOTAL TREE COUNT: 536

Table with columns: TAG NO., SCIENTIFIC NAME, COMMON NAME, DBH (inches), CONDITION, STRUCTURE, HEALTH, PROPOSED ACTION. Contains detailed tree inventory data for the first section of the site.

Table with columns: TAG NO., SCIENTIFIC NAME, COMMON NAME, DBH (inches), CONDITION, STRUCTURE, HEALTH, PROPOSED ACTION. Contains detailed tree inventory data for the second section of the site.

Table with columns: TAG NO., SCIENTIFIC NAME, COMMON NAME, DBH (inches), CONDITION, STRUCTURE, HEALTH, PROPOSED ACTION. Contains detailed tree inventory data for the third section of the site.



NORTHGATE OF NAPERVILLE NAPERVILLE, ILLINOIS PRELIMINARY LANDSCAPE PLAN TREE INVENTORY

Table with columns: REVISION, DATE. Contains revision history for the document.



GARY R. WEBER
ASSOCIATES, INC.

LAND PLANNING
ECOLOGICAL CONSULTING
LANDSCAPE ARCHITECTURE

402 W. LIBERTY DRIVE
WHEATON, ILLINOIS 60187
PHONE: 630-668-7197
www.grwainc.com

CLIENT



M/I HOMES
2135 CITY GATE LANE
SUITE 620
NAPERVILLE, IL 60563

CIVIL ENGINEER

V3 COMPANIES
7325 JANES AVENUE
WOODRIDGE, ILLINOIS 60517

NORTHGATE OF NAPERVILLE
NAPERVILLE, ILLINOIS
PRELIMINARY LANDSCAPE PLAN
TREE INVENTORY

3677	Populus deltoides	Eastern Cottonwood	7.24 - Fair/Poor	V-shaped joint, Double Leader, Poor Form		Remove
3678	Populus deltoides	Eastern Cottonwood	6.3 - Fair	Poor Form		Remove
3679	Populus deltoides	Eastern Cottonwood	6.3 - Fair	Poor Form - Crowded	10% dead wood	Remove
3680	Populus deltoides	Eastern Cottonwood	4.3 - Fair	Poor Form - Crowded		Remove
3681	Populus deltoides	Eastern Cottonwood	4.3 - Fair	Lean, Poor Form - Crowded		Remove
3682	Populus deltoides	Eastern Cottonwood	4.3 - Fair	Poor Form	10% dead wood	Remove
3683	Populus deltoides	Eastern Cottonwood	6.45 - Poor	V-shaped joint, Double Leader, Split Risk		Remove
3684	Populus deltoides	Eastern Cottonwood	6.35 - Poor	V-shaped joint, Multi Leader, Split Risk		Remove
3685	Robinia pseudoacacia	Black Locust	7.6.6.6.3.5 - Poor	V-shaped joint, Multi Leader, Split Risk		Preserve
3686	Robinia pseudoacacia	Black Locust	6.55 - Poor	V-shaped joint, Double Leader, Split Risk, Crown Lean		Preserve
3687	Robinia pseudoacacia	Black Locust	4.4 - Fair/Poor		Trunk Scar	Preserve
3688	Robinia pseudoacacia	Black Locust	5.3 - Fair			Preserve
3689	Populus deltoides	Eastern Cottonwood	4.3 - Fair	Poor Form - Crowded		Preserve
3690	Populus deltoides	Eastern Cottonwood	8.3 - Fair		10% dead wood	Preserve
3691	Morus alba	White Mulberry	5.4 - Fair/Poor	Lean, Crown Lean		Preserve
3692	Pyrus calleryana	Pear	4.35 - Poor	V-shaped joint, Double Leader, Split Risk		Preserve
3693	Robinia pseudoacacia	Black Locust	4.4 - Fair/Poor	Poor Form	Trunk Scar	Preserve
3694	Ulmus pumila	Siberian Elm	6.55 - Fair	Lean		Preserve
3695	Quercus bicolor	Swamp White Oak	6.3.3.2.4 - Fair/Poor	U-shaped joint, Multi Leader, Broken Leader		Preserve
3696	Quercus bicolor	Swamp White Oak	6.6.3.3.4 - Fair/Poor	U-shaped joint, Multi Leader, Broken Leader		Preserve
3697	Quercus bicolor	Swamp White Oak	5.54 - Fair/Poor	U-shaped joint, Double Leader, Broken Leader		Preserve
3698	Quercus bicolor	Swamp White Oak	7.7.6.4 - Fair/Poor	U-shaped joint, Multi Leader, Broken Leader		Preserve
3699	Quercus bicolor	Swamp White Oak	4.3.3.2.4 - Fair/Poor	U-shaped joint, Multi Leader, Broken Leader		Preserve
3700	Cataegus spp.	Hawthorn	4.25 - Poor	Broken Leader	>50% dead wood, Trunk Scar	Preserve
3701	Morus alba	White Mulberry	5.3.35 - Poor	V-shaped joint, Multi Leader, Split Risk		Preserve
3702	Crataegus spp.	Hawthorn	4.3.3.6 - Dead			Remove
3703	Juglans nigra	Black Walnut	4.4.35 - Poor	V-shaped joint, Multi Leader		Preserve
3704	Populus deltoides	Eastern Cottonwood	8.85 - Poor	V-shaped joint, Double Leader, Split Risk		Preserve
3705	Populus deltoides	Eastern Cottonwood	5.3.3.2.2.4 - Fair/Poor	V-shaped joint, Multi Leader, Broken Leader	Beaver damage	Preserve
3706	Quercus rubra	Red Oak	7.3.4 - Fair/Poor	U-shaped joint, Double Leader, Broken Leader	Beaver damage, resprouts	Preserve
3707	Quercus rubra	Red Oak	4.3.2.4 - Fair/Poor	V-shaped joint, Multi Leader, Broken Leader	Beaver damage, resprouts	Preserve
3708	Salix nigra	Black Willow	5.4 - Poor	V-shaped joint, Double Leader, Split Risk, Broken Leader		Preserve
3709	Salix nigra	Black Willow	4.33 - Fair	U-shaped joint, Double Leader		Preserve
3710	Pinus nigra	Austrian Pine	13.40HT3 - Fair	Crowded	20% dead wood	Preserve
3711	Pinus nigra	Austrian Pine	11.35HT3 - Fair	Crowded	20% dead wood	Preserve
3712	Pinus nigra	Austrian Pine	11.35HT3 - Fair	Crowded	20% dead wood	Preserve
3713	Pinus nigra	Austrian Pine	12.35HT3 - Fair	Crowded	20% dead wood	Preserve
3714	Pinus nigra	Austrian Pine	12.35HT3 - Fair		10% dead wood	Preserve
3715	Picea pungens	Colorado Spruce	7.25HT4 - Fair/Poor		40% dead wood	Preserve
3716	Ulmus pumila	Siberian Elm	6.4 - Fair/Poor	Lean, Poor Form - Crowded		Preserve
3717	Picea pungens	Colorado Spruce	8.25HT4 - Fair/Poor	Crowded	30% dead wood	Preserve
3718	Picea pungens	Colorado Spruce	9.25HT4 - Fair/Poor		40% dead wood	Preserve
3719	Salix nigra	Black Willow	4.35 - Poor	V-shaped joint, Double Leader, Split Risk, Crown Lean		Preserve
3720	Picea pungens	Colorado Spruce	7.20HT3 - Fair		20% dead wood	Preserve
3721	Picea pungens	Colorado Spruce	7.20HT3 - Poor		>50% dead wood	Preserve
3722	Picea pungens	Colorado Spruce	7.20HT4 - Fair/Poor		40% dead wood	Preserve
3723	Picea pungens	Colorado Spruce	11.20HT4 - Fair/Poor	Lean	30% dead wood	Preserve
3724	Picea pungens	Colorado Spruce	8.25HT3 - Fair		20% dead wood	Preserve
3725	Acer spp.	Maple Cultivar	8.4 - Fair/Poor		Trunk Scar	Preserve
3726	Acer spp.	Maple Cultivar	9.4 - Fair/Poor		Cavity	Preserve
3727	Acer spp.	Maple Cultivar	10.2 - Good			Preserve
3728	Acer spp.	Maple Cultivar	9.4 - Fair/Poor		Cavity	Preserve
3729	Salix nigra	Black Willow	10.3 - Fair		10% dead wood	Preserve
3730	Ulmus pumila	Siberian Elm	12.3 - Fair			Preserve
3731	Picea pungens	Colorado Spruce	6.15HT3 - Fair		20% dead wood	Preserve
3732	Picea pungens	Colorado Spruce	7.15HT2 - Good		10% dead wood	Preserve
3733	Picea pungens	Colorado Spruce	7.15HT3 - Fair	Lean	10% dead wood	Preserve
3734	Acer negundo	Box Elder	6.35 - Poor	V-shaped joint, Double Leader, Split Risk, Lean		Remove
3735	Pyrus calleryana	Pear	6.55 - Poor	V-shaped joint, Double Leader, Split Risk		Remove
3736	Acer negundo	Box Elder	6.55 - Poor	V-shaped joint, Double Leader, Split Risk		Remove
3737	Acer saccharinum	Silver Maple	4.4.3.35 - Poor	V-shaped joint, Multi Leader, Split Risk	Trunk Scar	Remove
3738	Populus deltoides	Eastern Cottonwood	9.3 - Fair	Crowded	10% dead wood	Remove
3739	Populus deltoides	Eastern Cottonwood	7.3 - Fair	Lean, Crowded	10% dead wood	Remove
3740	Populus deltoides	Eastern Cottonwood	5.3 - Fair	Poor Form - Crowded		Remove
3741	Populus deltoides	Eastern Cottonwood	8.4 - Fair/Poor	Lean, Unbalanced, Crowded	Trunk Scar	Remove
3742	Populus deltoides	Eastern Cottonwood	7.3 - Fair	Crowded	10% dead wood	Remove
3743	Populus deltoides	Eastern Cottonwood	4.3 - Fair	Unbalanced, Crown Lean, Crowded		Remove
3744	Populus deltoides	Eastern Cottonwood	5.3 - Fair	Crown Lean, Crowded		Remove
3745	Populus deltoides	Eastern Cottonwood	10.3 - Fair			Remove
3746	Populus deltoides	Eastern Cottonwood	4.3 - Fair	Lean, Crowded		Remove
3747	Populus deltoides	Eastern Cottonwood	7.6.65 - Poor	V-shaped joint, Multi Leader, Split Risk	10% dead wood	Remove
3748	Acer negundo	Box Elder	4.3.35 - Poor	V-shaped joint, Multi Leader, Split Risk		Remove
3749	Acer negundo	Box Elder	5.4 - Fair/Poor	Lean, Poor Form		Remove
3750	Populus deltoides	Eastern Cottonwood	5.3 - Fair	Lean, Crowded		Remove
3751	Populus deltoides	Eastern Cottonwood	4.3 - Fair			Remove
3752	Populus deltoides	Eastern Cottonwood	5.3 - Fair	Poor Form - Crowded		Remove
3753	Populus deltoides	Eastern Cottonwood	5.45 - Poor	V-shaped joint, Double Leader, Split Risk		Remove
3754	Populus deltoides	Eastern Cottonwood	5.3 - Fair	Unbalanced	10% dead wood	Remove
3755	Populus deltoides	Eastern Cottonwood	6.3 - Fair	Unbalanced	10% dead wood	Remove
3756	Populus deltoides	Eastern Cottonwood	5.3 - Fair	Poor Form		Remove
3757	Populus deltoides	Eastern Cottonwood	4.3 - Fair			Remove
3758	Populus deltoides	Eastern Cottonwood	6.35 - Poor	V-shaped joint, Double Leader, Split Risk	10% dead wood	Remove
3759	Populus deltoides	Eastern Cottonwood	4.3 - Fair	Poor Form		Remove
3760	Populus deltoides	Eastern Cottonwood	4.3 - Fair	Poor Form - Crowded		Remove
3761	Populus deltoides	Eastern Cottonwood	5.3 - Fair	Poor Form - Crown Lean	10% dead wood	Remove
3762	Populus deltoides	Eastern Cottonwood	5.3 - Fair		10% dead wood	Remove
3763	Populus deltoides	Eastern Cottonwood	6.3 - Fair	Lean		Remove
3764	Populus deltoides	Eastern Cottonwood	6.3 - Fair	Lean	10% dead wood	Remove
3765	Populus deltoides	Eastern Cottonwood	4.3 - Fair	Lean		Remove
3766	Populus deltoides	Eastern Cottonwood	5.35 - Poor	V-shaped joint, Double Leader, Split Risk, Lean		Remove
3767	Populus deltoides	Eastern Cottonwood	6.4 - Fair/Poor	Poor Form	Trunk Scar	Remove
3768	Populus deltoides	Eastern Cottonwood	4.3 - Fair	Lean, Crowded		Remove
3769	Populus deltoides	Eastern Cottonwood	7.3 - Fair			Remove
3770	Populus deltoides	Eastern Cottonwood	5.3 - Fair	Lean, Crowded		Remove
3771	Populus deltoides	Eastern Cottonwood	5.3 - Fair	Crowded		Remove
3772	Populus deltoides	Eastern Cottonwood	4.3 - Fair	Poor Form		Remove
3773	Populus deltoides	Eastern Cottonwood	4.3 - Fair	Poor Form		Remove
3774	Prunus serotina	Black Cherry	4.3 - Fair			Remove
3775	Populus deltoides	Eastern Cottonwood	6.3 - Fair	Lean		Remove
3776	Populus deltoides	Eastern Cottonwood	4.3 - Fair	Crowded		Remove
3777	Populus deltoides	Eastern Cottonwood	7.3 - Fair		10% dead wood	Remove

2	2026.05.20
1	2026.04.01
REVISION	DATE

DATE	2025.12.17
PROJECT NO.	MI22208
DRAWN	CLE
CHECKED	DHS
SHEET NO.	