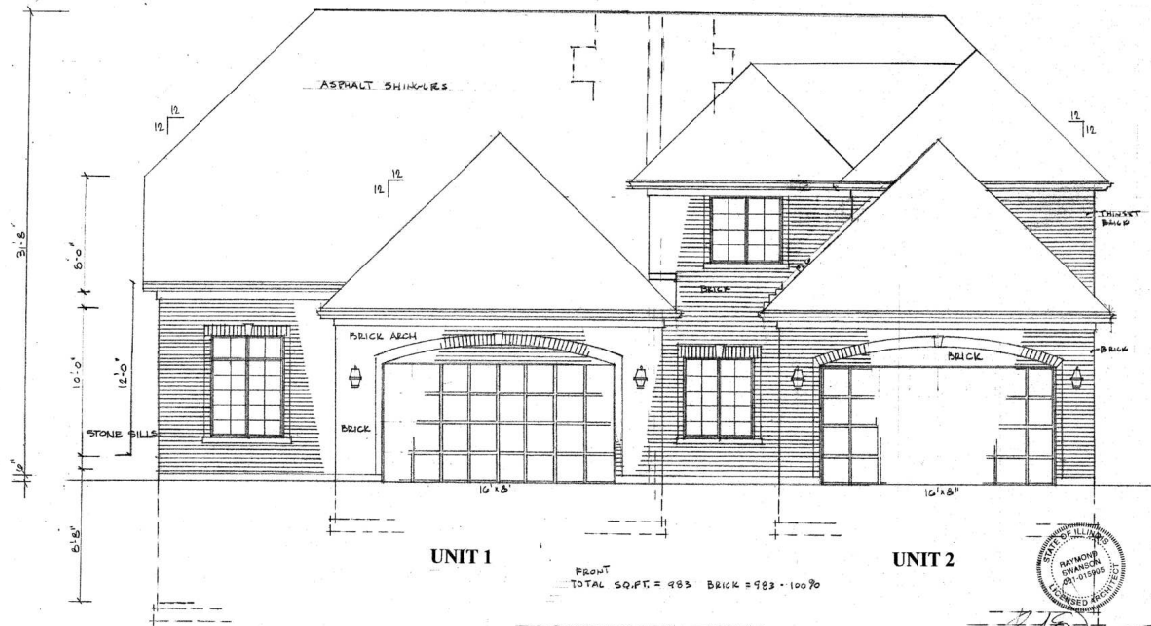


LEFT ELEVATION

LEFT
 TOTAL SQ. FT. = 1144
 BRICK = 191 = 17%
 SIDING = 552 = 51%

To: Naperville Zoning Department
 Re: Ashwood Park Two Unit Townhome Plans
 Brick wall square footage calculations

	Total Brick	Siding		
Front	983	983	100%	0%
Left	1144	792	69%	352
Rear	1318	817	62%	501
Right	1240	856	69%	384
Total	4685	3448	74%	1237



UNIT 1

UNIT 2

FRONT
 TOTAL SQ. FT. = 983 BRICK = 983 = 100%

FRONT ELEVATION



LIC 8711-70-2020

REVISIONS	DATE
1-6-2019	
1-22-2019	

ARCHITECT'S PLUS LTD
 10 S 373 NORMANTOWN ROAD
 NAPERVILLE, IL 60564
 630-978-7670

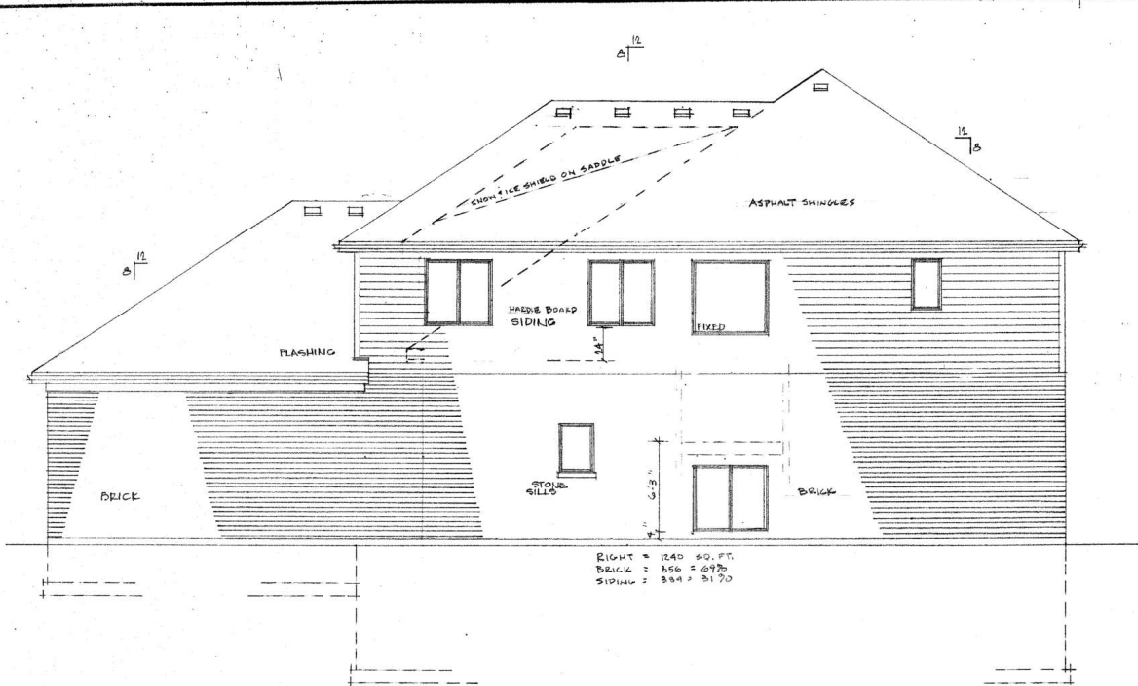
ASHWOOD PARK NORTH
 TOWNHOMES
 NAPERVILLE, IL.

BID SET

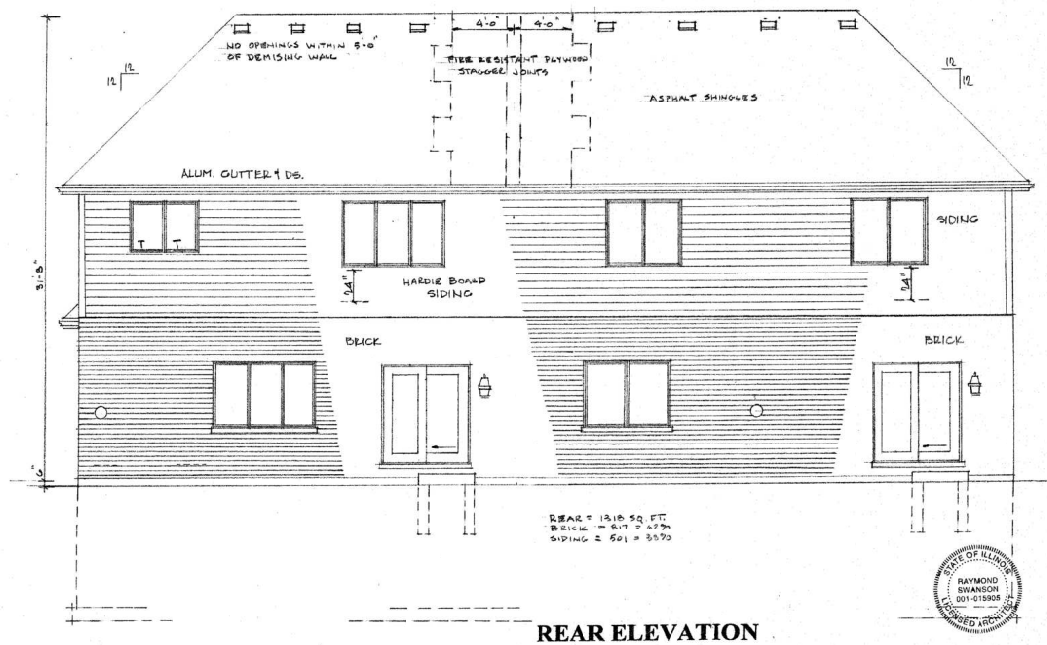
CRESTVIEW BUILDERS
 AN UNLICENSED CONTRACTOR

Date	1-26-2019
Scale	1/4" = 1'-0"
Drawn	RS/SL
Job	15-APT
Sheet	1
Of Six	Draws

EXHIBIT D



RIGHT ELEVATION



REAR ELEVATION



REVISIONS	
11-2-2017	
11-22-2017	

ARCHITECTS PLUS LTD
10 S 372 NORMANTOWN ROAD
NAPERVILLE, IL 60564
630-978-7670

ASHWOOD PARK NORTH
TOWNHOMES
NAPERVILLE, IL.

BID SET

CRESTVIEW BUILDERS
INCORPORATED

Date	7-28-2017
Scale	1/4" = 1'-0"
Drawn	RS SC
Job	15-APT4
Sheet	2

Of 517 Sheets