



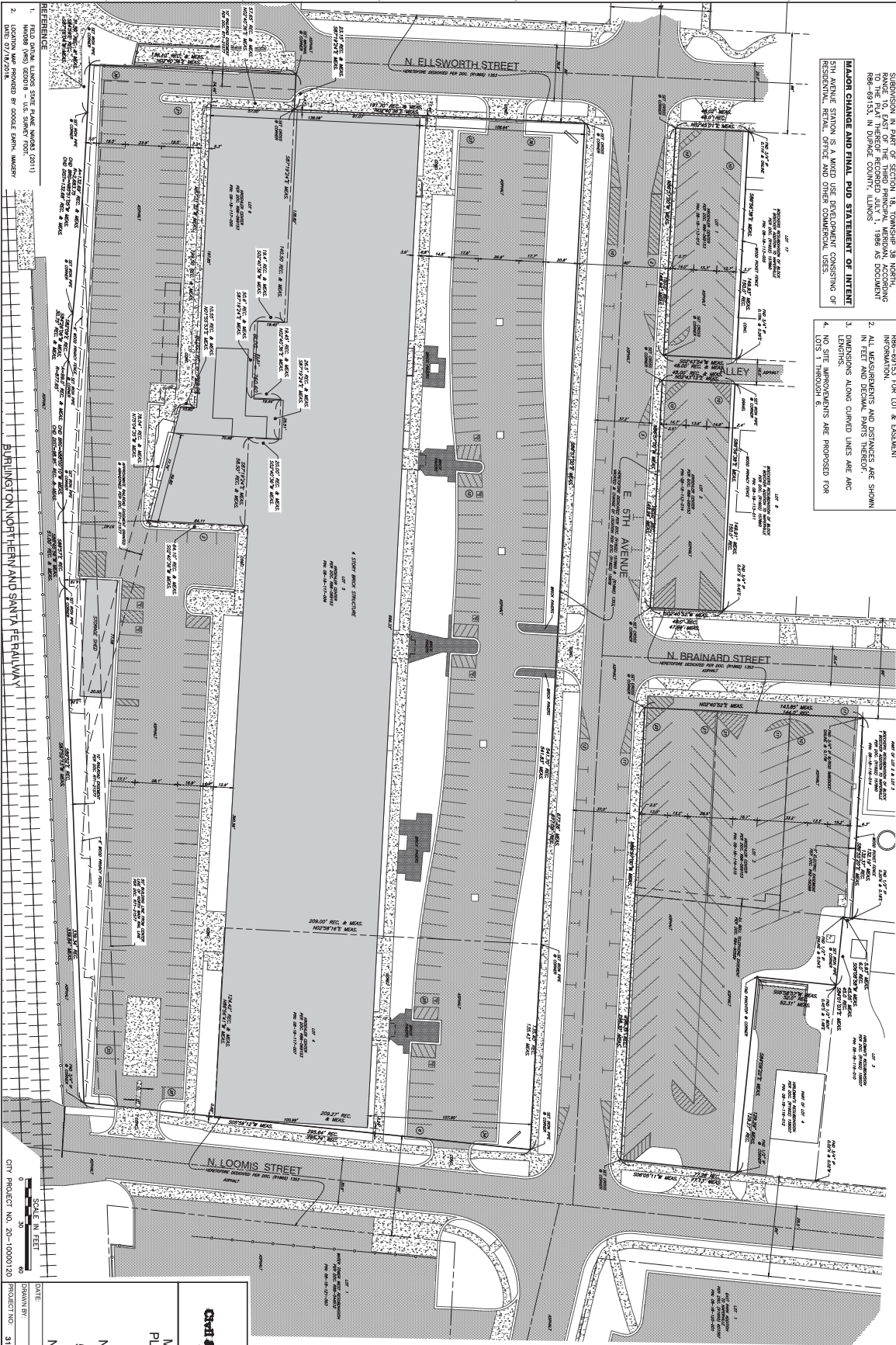
# MAJOR CHANGE AND FINAL PLANNED UNIT DEVELOPMENT FOR 5TH AVENUE STATION NAPERVILLE, ILLINOIS

PART OF THE SECTION 18, TOWNSHIP 28 NORTH, RANGE 10 EAST OF THE THIRD PRINCIPAL MERIDIAN, ACCORDING TO THE PLAT OF THE BURLINGTON NORTHERN AND SANTA FE RAILWAY

**LEGAL DESCRIPTION**  
 LOTS 1, 2, 3, 4, 5, AND 6 IN REGULAR CENTER, BEING A SUBDIVISION IN PART OF SECTION 18, TOWNSHIP 28 NORTH, RANGE 10 EAST OF THE THIRD PRINCIPAL MERIDIAN, ACCORDING TO THE PLAT OF THE BURLINGTON NORTHERN AND SANTA FE RAILWAY, BEING 89-0153, IN DUPAGE COUNTY, ILLINOIS, 1990 AS DESCRIBED

**MAJOR CHANGE AND FINAL PUD STATEMENT OF INTENT**  
 5TH AVENUE STATION IS A MAJOR USE DEVELOPMENT CONSISTING OF RESIDENTIAL, RETAIL, OFFICE AND OTHER COMMERCIAL USES.

**NOTES**  
 THIS IS NOT A PLAN OF SUBDIVISION  
 1. REFER TO FINAL PLANNED UNIT DEVELOPMENT AND SUBDIVISION PLAN REGISTERED CENTER, R88-08173 FOR LOT & EXISTENT INFORMATION.  
 2. ALL MEASUREMENTS AND DISTANCES ARE SHOWN IN FEET AND DECIMAL FRACS THEREOF.  
 3. DIMENSIONS ALONG CURVED LINES ARE ARC LENGTHS.  
 4. NO SITE IMPROVEMENTS ARE PROPOSED FOR LOTS 1 THROUGH 6.



THIS PLAN HAS BEEN SUBMITTED FOR RECORDATION BY AND RETURN TO:  
 ADDRESS: 405 S. CALLE STREET  
 NAPERVILLE, ILLINOIS 60564

ADDRESS: 200 S. FIFTH AVENUE  
 NAPERVILLE, IL 60563

REVISION RECORD

NO.	DATE	DESCRIPTION
01	08-18-13	13-131
02	08-18-13	13-134
03	08-18-13	13-135
04	08-18-13	13-136
05	08-18-13	13-137
06	08-18-13	13-138
07	08-18-13	13-139
08	08-18-13	13-140
09	08-18-13	13-141
10	08-18-13	13-142
11	08-18-13	13-143
12	08-18-13	13-144
13	08-18-13	13-145
14	08-18-13	13-146
15	08-18-13	13-147
16	08-18-13	13-148
17	08-18-13	13-149
18	08-18-13	13-150
19	08-18-13	13-151
20	08-18-13	13-152
21	08-18-13	13-153
22	08-18-13	13-154
23	08-18-13	13-155
24	08-18-13	13-156
25	08-18-13	13-157
26	08-18-13	13-158
27	08-18-13	13-159
28	08-18-13	13-160
29	08-18-13	13-161
30	08-18-13	13-162
31	08-18-13	13-163
32	08-18-13	13-164
33	08-18-13	13-165
34	08-18-13	13-166
35	08-18-13	13-167
36	08-18-13	13-168
37	08-18-13	13-169
38	08-18-13	13-170
39	08-18-13	13-171
40	08-18-13	13-172
41	08-18-13	13-173
42	08-18-13	13-174
43	08-18-13	13-175
44	08-18-13	13-176
45	08-18-13	13-177
46	08-18-13	13-178
47	08-18-13	13-179
48	08-18-13	13-180
49	08-18-13	13-181
50	08-18-13	13-182
51	08-18-13	13-183
52	08-18-13	13-184
53	08-18-13	13-185
54	08-18-13	13-186
55	08-18-13	13-187
56	08-18-13	13-188
57	08-18-13	13-189
58	08-18-13	13-190
59	08-18-13	13-191
60	08-18-13	13-192
61	08-18-13	13-193
62	08-18-13	13-194
63	08-18-13	13-195
64	08-18-13	13-196
65	08-18-13	13-197
66	08-18-13	13-198
67	08-18-13	13-199
68	08-18-13	13-200
69	08-18-13	13-201
70	08-18-13	13-202
71	08-18-13	13-203
72	08-18-13	13-204
73	08-18-13	13-205
74	08-18-13	13-206
75	08-18-13	13-207
76	08-18-13	13-208
77	08-18-13	13-209
78	08-18-13	13-210
79	08-18-13	13-211
80	08-18-13	13-212
81	08-18-13	13-213
82	08-18-13	13-214
83	08-18-13	13-215
84	08-18-13	13-216
85	08-18-13	13-217
86	08-18-13	13-218
87	08-18-13	13-219
88	08-18-13	13-220
89	08-18-13	13-221
90	08-18-13	13-222
91	08-18-13	13-223
92	08-18-13	13-224
93	08-18-13	13-225
94	08-18-13	13-226
95	08-18-13	13-227
96	08-18-13	13-228
97	08-18-13	13-229
98	08-18-13	13-230
99	08-18-13	13-231
100	08-18-13	13-232
101	08-18-13	13-233
102	08-18-13	13-234
103	08-18-13	13-235
104	08-18-13	13-236
105	08-18-13	13-237
106	08-18-13	13-238
107	08-18-13	13-239
108	08-18-13	13-240
109	08-18-13	13-241
110	08-18-13	13-242
111	08-18-13	13-243
112	08-18-13	13-244
113	08-18-13	13-245
114	08-18-13	13-246
115	08-18-13	13-247
116	08-18-13	13-248
117	08-18-13	13-249
118	08-18-13	13-250
119	08-18-13	13-251
120	08-18-13	13-252
121	08-18-13	13-253
122	08-18-13	13-254
123	08-18-13	13-255
124	08-18-13	13-256
125	08-18-13	13-257
126	08-18-13	13-258
127	08-18-13	13-259
128	08-18-13	13-260
129	08-18-13	13-261
130	08-18-13	13-262
131	08-18-13	13-263
132	08-18-13	13-264
133	08-18-13	13-265
134	08-18-13	13-266
135	08-18-13	13-267
136	08-18-13	13-268
137	08-18-13	13-269
138	08-18-13	13-270
139	08-18-13	13-271
140	08-18-13	13-272
141	08-18-13	13-273
142	08-18-13	13-274
143	08-18-13	13-275
144	08-18-13	13-276
145	08-18-13	13-277
146	08-18-13	13-278
147	08-18-13	13-279
148	08-18-13	13-280
149	08-18-13	13-281
150	08-18-13	13-282
151	08-18-13	13-283
152	08-18-13	13-284
153	08-18-13	13-285
154	08-18-13	13-286
155	08-18-13	13-287
156	08-18-13	13-288
157	08-18-13	13-289
158	08-18-13	13-290
159	08-18-13	13-291
160	08-18-13	13-292
161	08-18-13	13-293
162	08-18-13	13-294
163	08-18-13	13-295
164	08-18-13	13-296
165	08-18-13	13-297
166	08-18-13	13-298
167	08-18-13	13-299
168	08-18-13	13-300
169	08-18-13	13-301
170	08-18-13	13-302
171	08-18-13	13-303
172	08-18-13	13-304
173	08-18-13	13-305
174	08-18-13	13-306
175	08-18-13	13-307
176	08-18-13	13-308
177	08-18-13	13-309
178	08-18-13	13-310
179	08-18-13	13-311
180	08-18-13	13-312
181	08-18-13	13-313
182	08-18-13	13-314
183	08-18-13	13-315
184	08-18-13	13-316
185	08-18-13	13-317
186	08-18-13	13-318
187	08-18-13	13-319
188	08-18-13	13-320
189	08-18-13	13-321
190	08-18-13	13-322
191	08-18-13	13-323
192	08-18-13	13-324
193	08-18-13	13-325
194	08-18-13	13-326
195	08-18-13	13-327
196	08-18-13	13-328
197	08-18-13	13-329
198	08-18-13	13-330
199	08-18-13	13-331
200	08-18-13	13-332
201	08-18-13	13-333
202	08-18-13	13-334
203	08-18-13	13-335
204	08-18-13	13-336
205	08-18-13	13-337
206	08-18-13	13-338
207	08-18-13	13-339
208	08-18-13	13-340
209	08-18-13	13-341
210	08-18-13	13-342
211	08-18-13	13-343
212	08-18-13	13-344
213	08-18-13	13-345
214	08-18-13	13-346
215	08-18-13	13-347
216	08-18-13	13-348
217	08-18-13	13-349
218	08-18-13	13-350
219	08-18-13	13-351
220	08-18-13	13-352
221	08-18-13	13-353
222	08-18-13	13-354
223	08-18-13	13-355
224	08-18-13	13-356
225	08-18-13	13-357
226	08-18-13	13-358
227	08-18-13	13-359
228	08-18-13	13-360
229	08-18-13	13-361
230	08-18-13	13-362
231	08-18-13	13-363
232	08-18-13	13-364
233	08-18-13	13-365
234	08-18-13	13-366
235	08-18-13	13-367
236	08-18-13	13-368
237	08-18-13	13-369
238	08-18-13	13-370
239	08-18-13	13-371
240	08-18-13	13-372
241	08-18-13	13-373
242	08-18-13	13-374
243	08-18-13	13-375
244	08-18-13	13-376
245	08-18-13	13-377
246	08-18-13	13-378
247	08-18-13	13-379
248	08-18-13	13-380
249	08-18-13	13-381
250	08-18-13	13-382
251	08-18-13	13-383
252	08-18-13	13-384
253	08-18-13	13-385
254	08-18-13	13-386
255	08-18-13	13-387
256	08-18-13	13-388
257	08-18-13	13-389
258	08-18-13	13-390
259	08-18-13	13-391
260	08-18-13	13-392
261	08-18-13	13-393
262	08-18-13	13-394
263	08-18-13	13-395
264	08-18-13	13-396
265	08-18-13	13-397
266	08-18-13	13-398
267	08-18-13	13-399
268	08-18-13	13-400
269	08-18-13	13-401
270	08-18-13	13-402
271	08-18-13	13-403
272	08-18-13	13-404
273	08-18-13	13-405
274		

