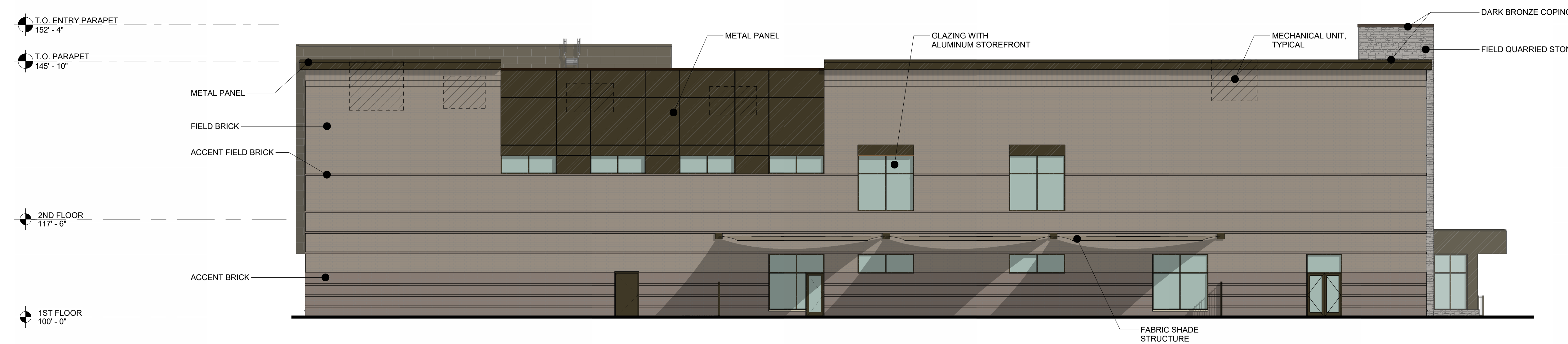


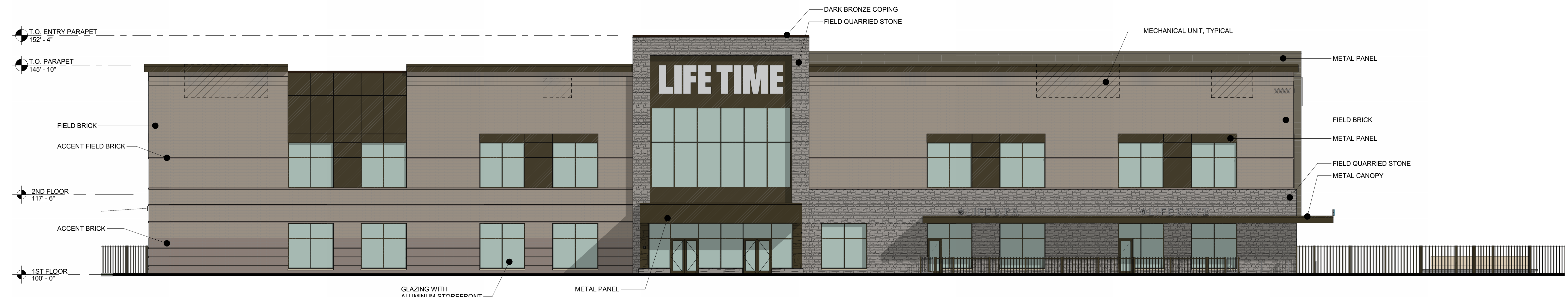
4 EXTERIOR ELEVATION - WEST  
3/32" = 1'-0"



3 EXTERIOR ELEVATION - SOUTH  
3/32" = 1'-0"



2 EXTERIOR ELEVATION - EAST  
3/32" = 1'-0"



1 EXTERIOR ELEVATION - NORTH  
3/32" = 1'-0"

# NAPERVILLE, IL E-BOX PLUS

**EXTERIOR BUILDING ELEVATION MATERIAL TABLE:**

**NORTH BUILDING ELEVATION -**

INCLUDED MATERIAL						EXCLUDED MATERIAL	TOTALS	
BRICK		STONE		MTL PANEL		WDW/DOOR		
5,459 SF	57%	1,871 SF	19%	2,322 SF	24%	2,604 SF	2,604 SF	21%
							9,652 SF	79%

**EAST BUILDING ELEVATION -**

INCLUDED MATERIAL						EXCLUDED MATERIAL	TOTALS	
BRICK		STONE		MTL PANEL		WDW/DOOR		
7,234 SF	80%	172 SF	2%	1,654 SF	18%	800 SF	800 SF	8%
							9,060 SF	92%

**SOUTH BUILDING ELEVATION -**

INCLUDED MATERIAL						EXCLUDED MATERIAL	TOTALS	
BRICK		STONE		MTL PANEL		WDW/DOOR		
5,022 SF	48%	00 SF	0%	5,440 SF	52%	1,622 SF	1,622 SF	13%
							10,462 SF	87%

**WEST BUILDING ELEVATION -**

INCLUDED MATERIAL						EXCLUDED MATERIAL	TOTALS	
BRICK		STONE		MTL PANEL		WDW/DOOR		
4,849 SF	53%	1,084 SF	12%	3,163 SF	35%	1,038 SF	1,038 SF	10%
							9,096 SF	90%