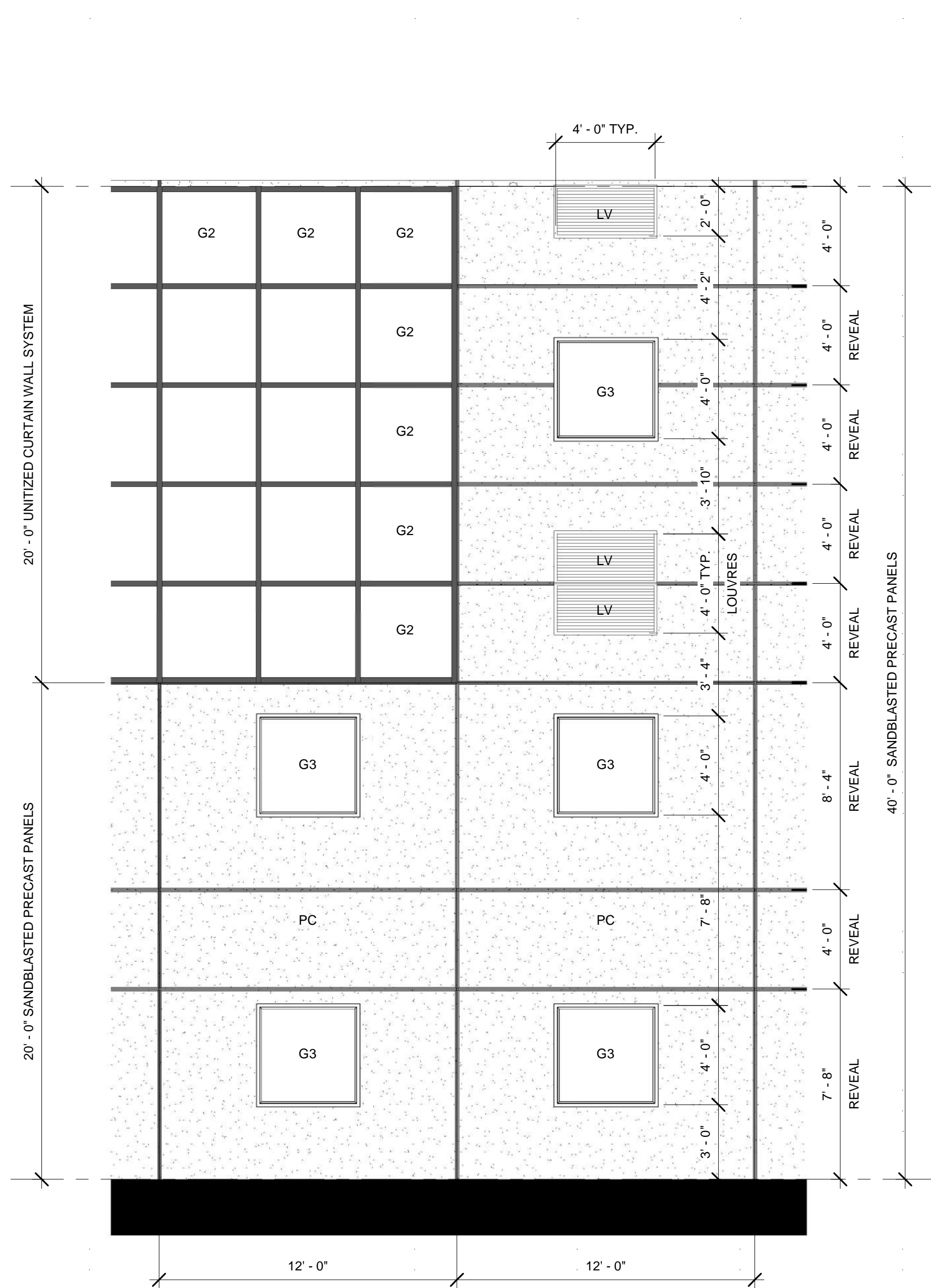
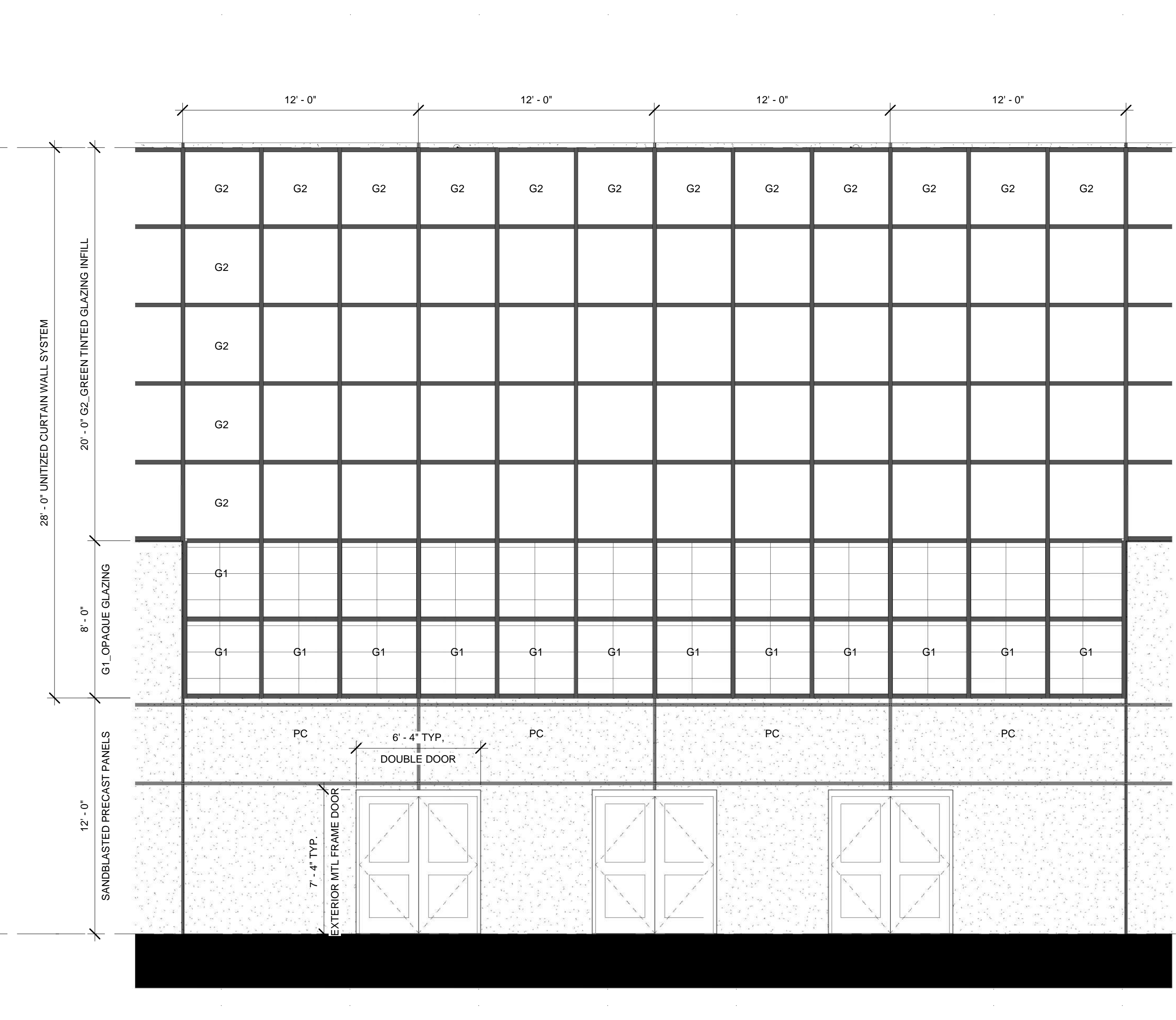


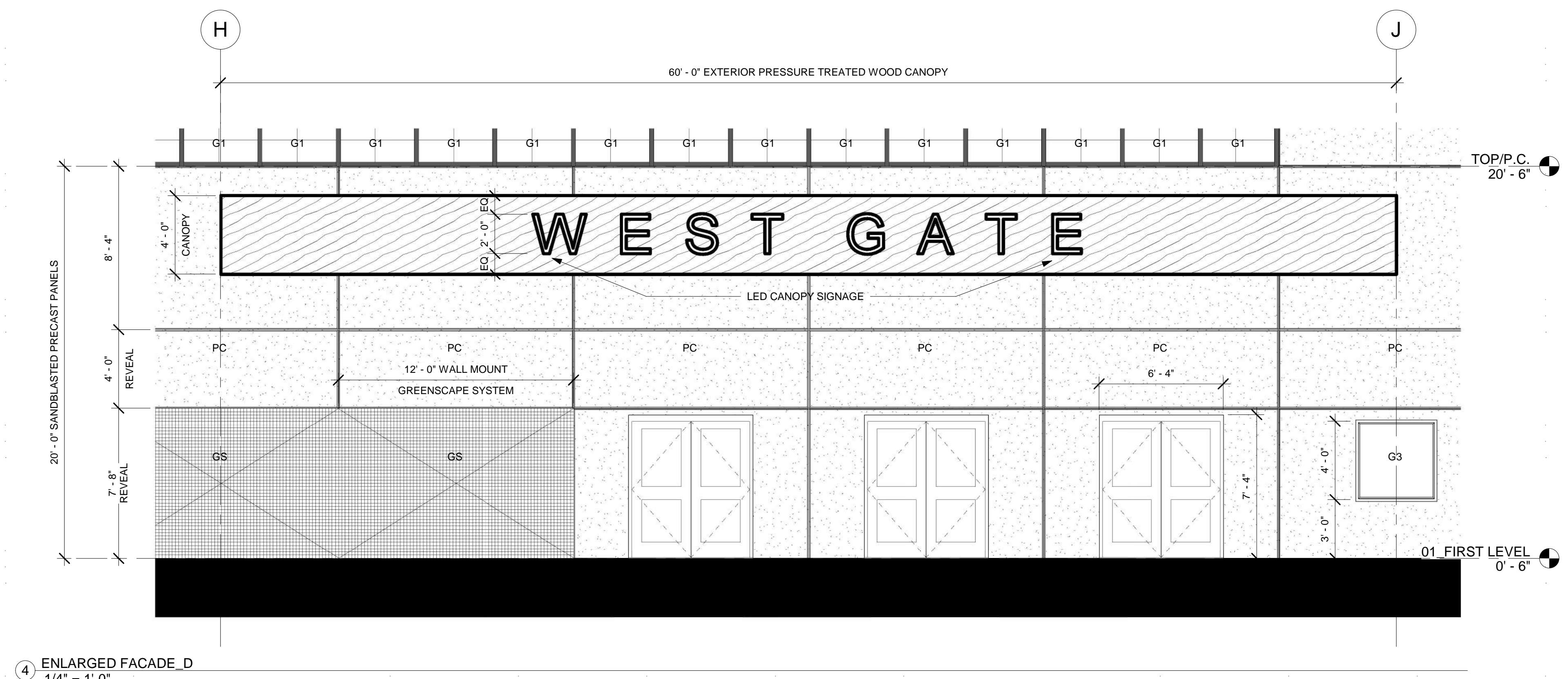
1 ENLARGED FACADE A
1/4" = 1'-0"



2 ENLARGED FACADE B
1/4" = 1'-0"



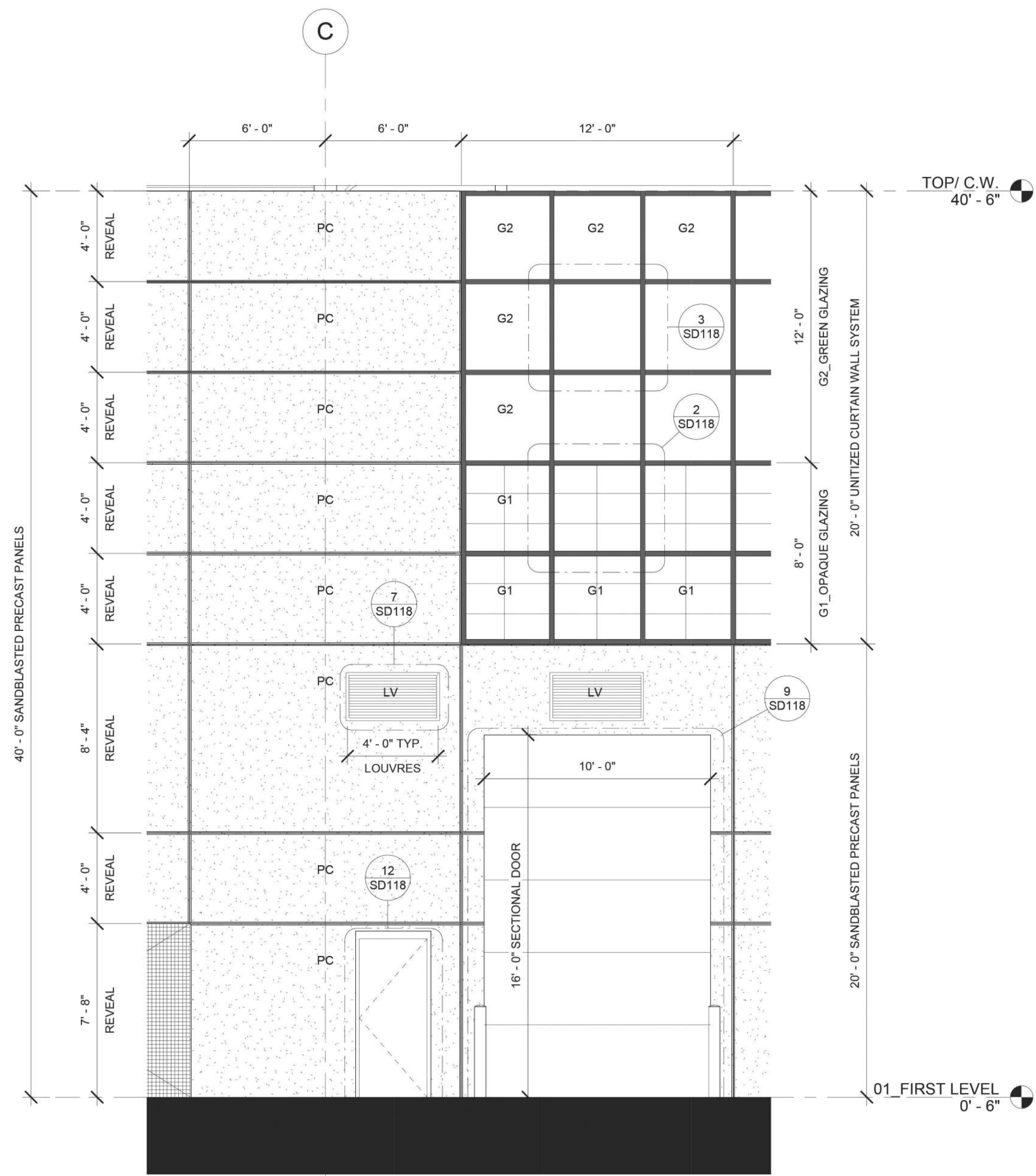
3 ENLARGED FACADE C
1/4" = 1'-0"



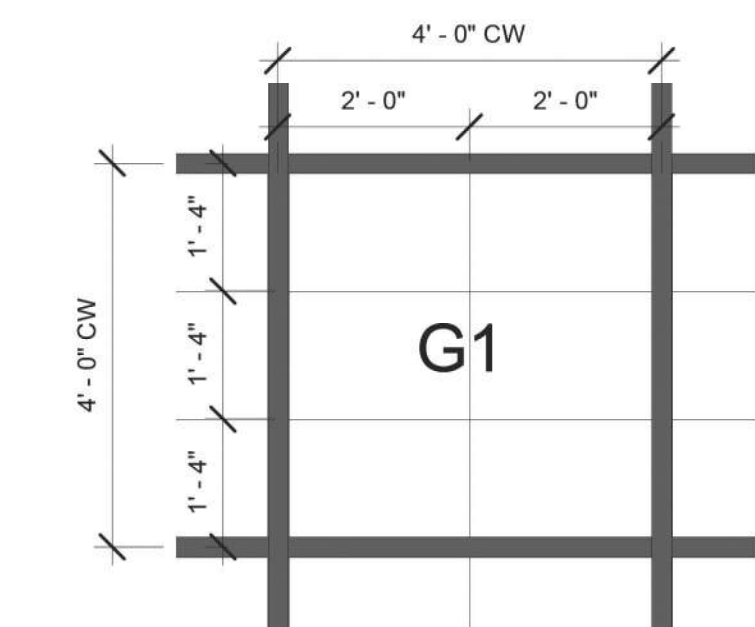
4 ENLARGED FACADE D
1/4" = 1'-0"

EXTERIOR FACADE MATERIALS

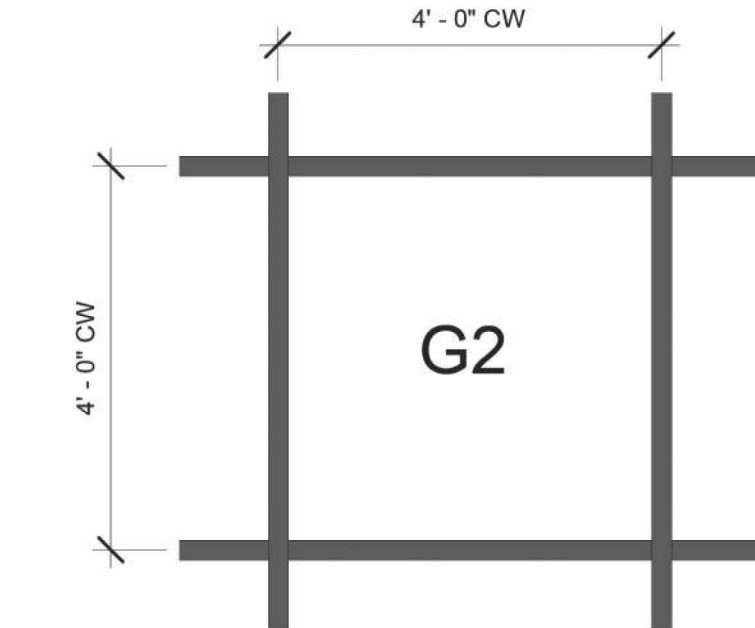
- G1** INSULATED OPAQUE GLAZING INFILL
- G2** INSULATED GREEN TINTED GLAZING INFILL
- G3** 4'x4' INSULATED FIXED WINDOW
- PC** SANDBLASTED FINISH INSULATED PRECAST PANELS
- CW** 4'x4' UNITIZED CURTAIN WALL SYSTEM
- WD** PRESURETREATED WOOD CANOPY
- LV** METAL LOUVRES
- GS** WALL MOUNTED PANELS - GREENSCAPE SYSTEM



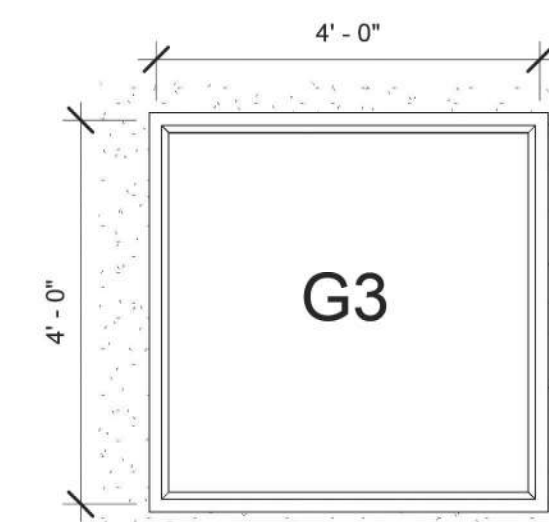
1 ENLARGED FACADE_E
1/4" = 1'-0"



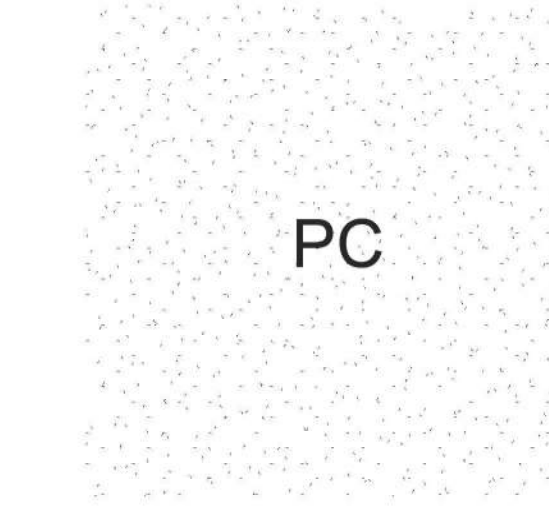
2 G1_OPAQUE GLAZING INFILL
1/2" = 1'-0"



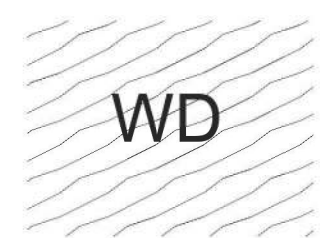
3 G2_GREEN GLAZING INFILL
1/2" = 1'-0"



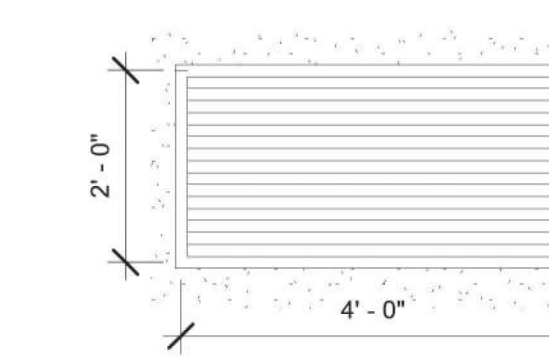
4 G3_FIXED WINDOW
1/2" = 1'-0"



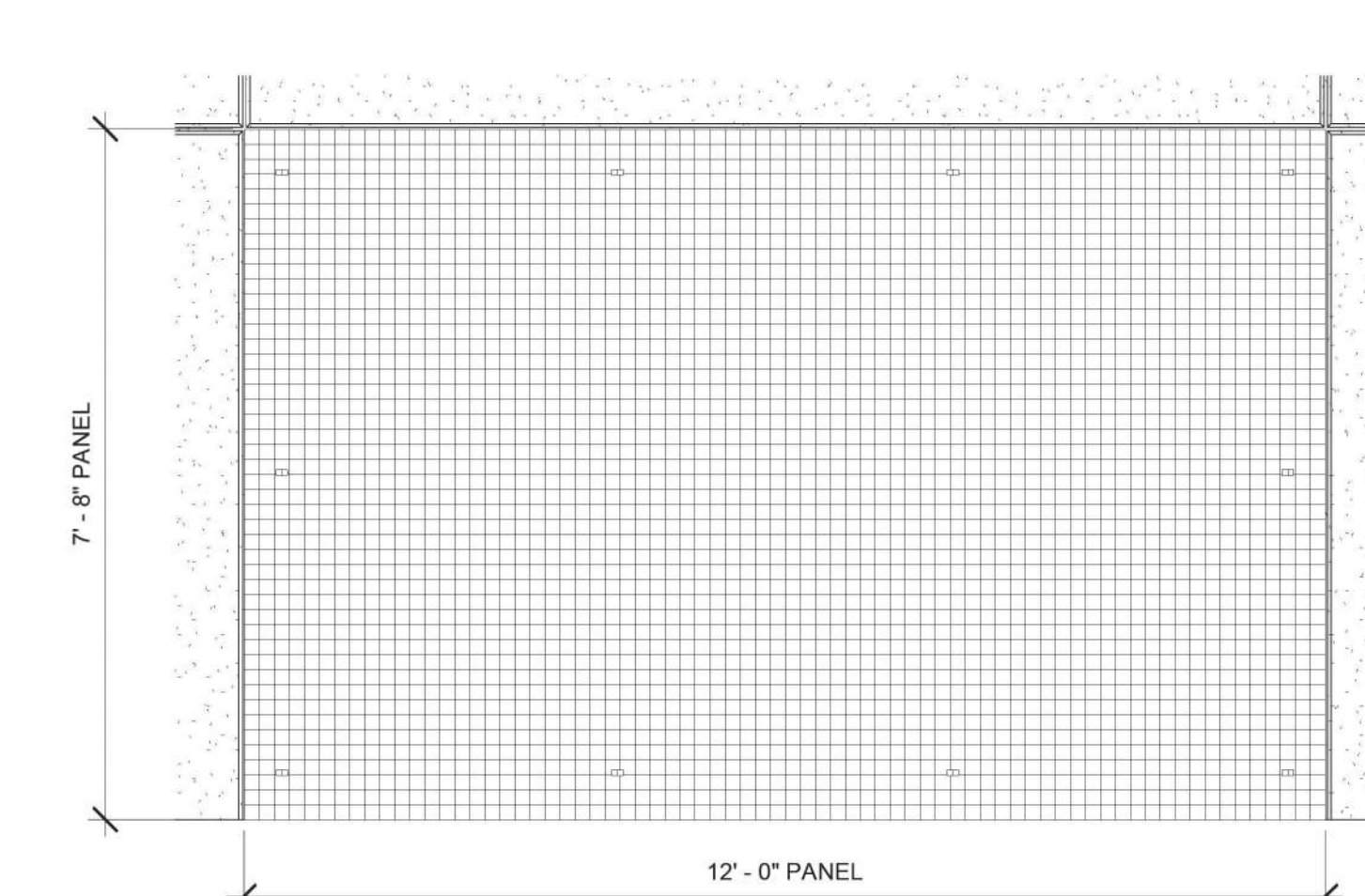
5 PC_PRECAST PANELS
1/2" = 1'-0"



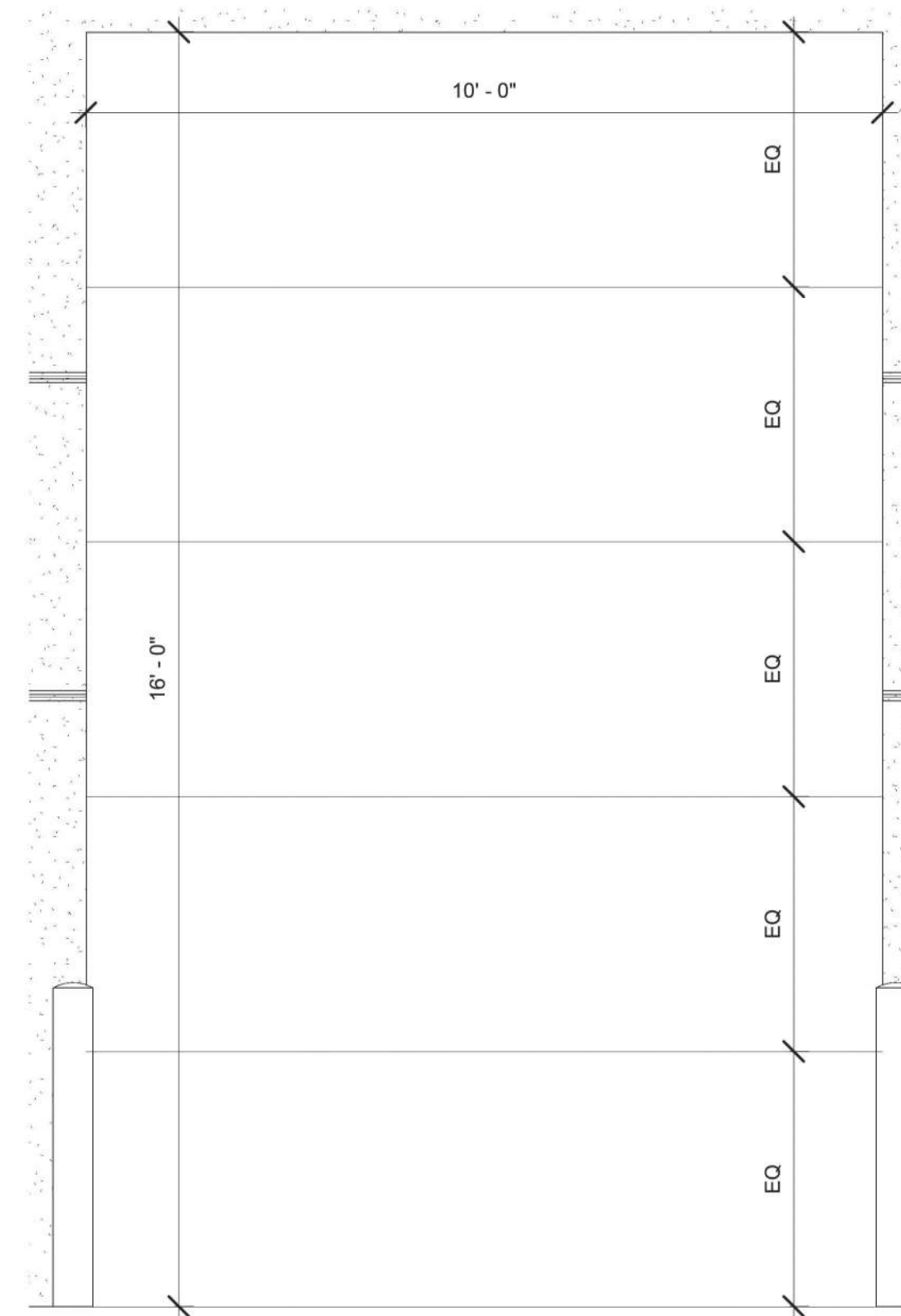
6 WD_WOOD CANOPY
1/2" = 1'-0"



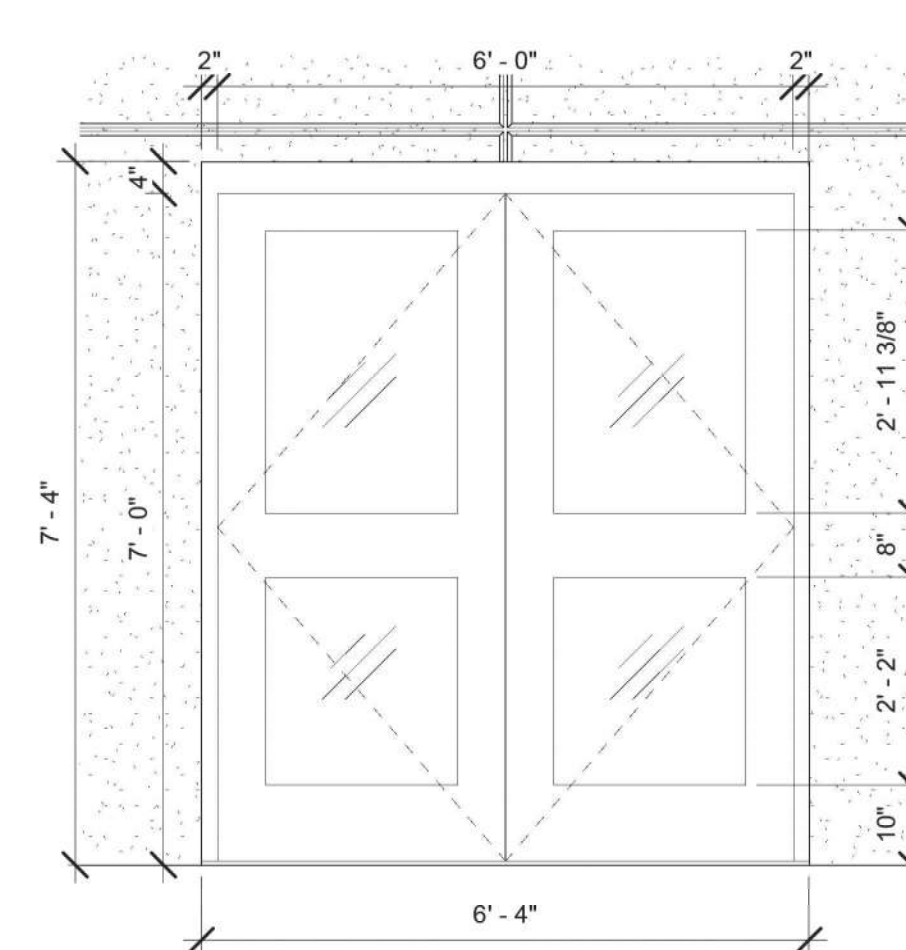
7 LV_METAL LOUVRES
1/2" = 1'-0"



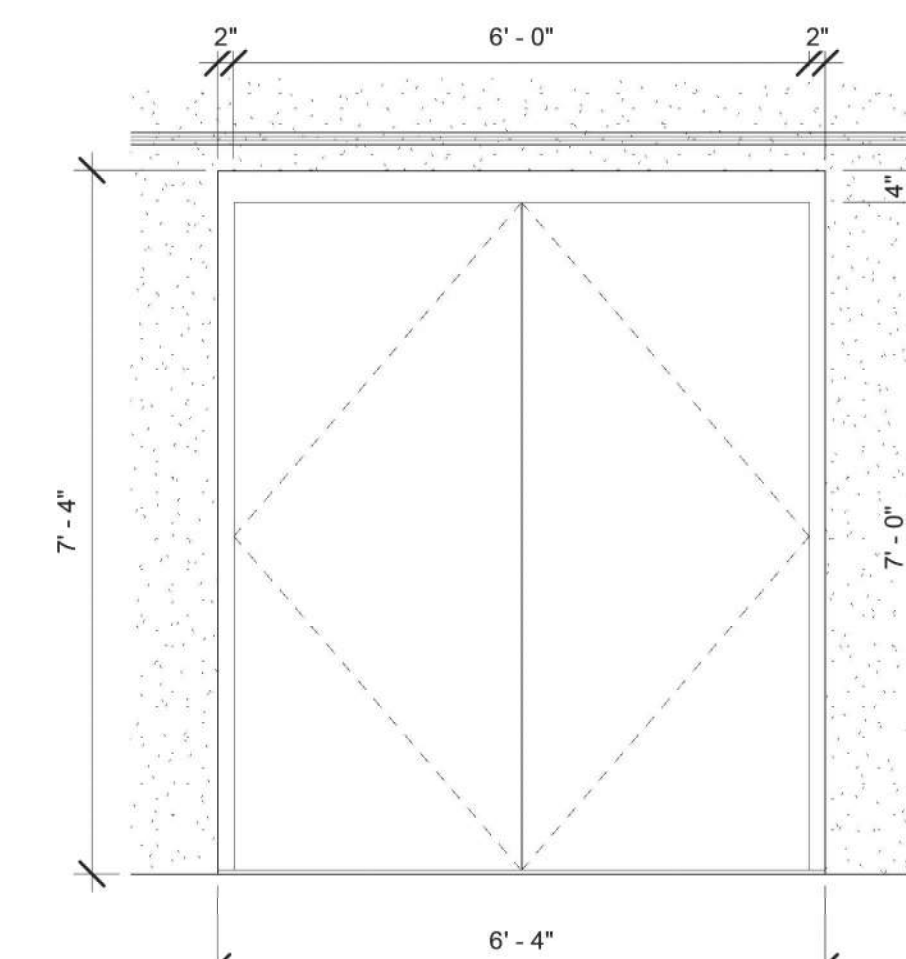
8 GS_WALL MOUNT GREENSCAPE PANELS
1/2" = 1'-0"



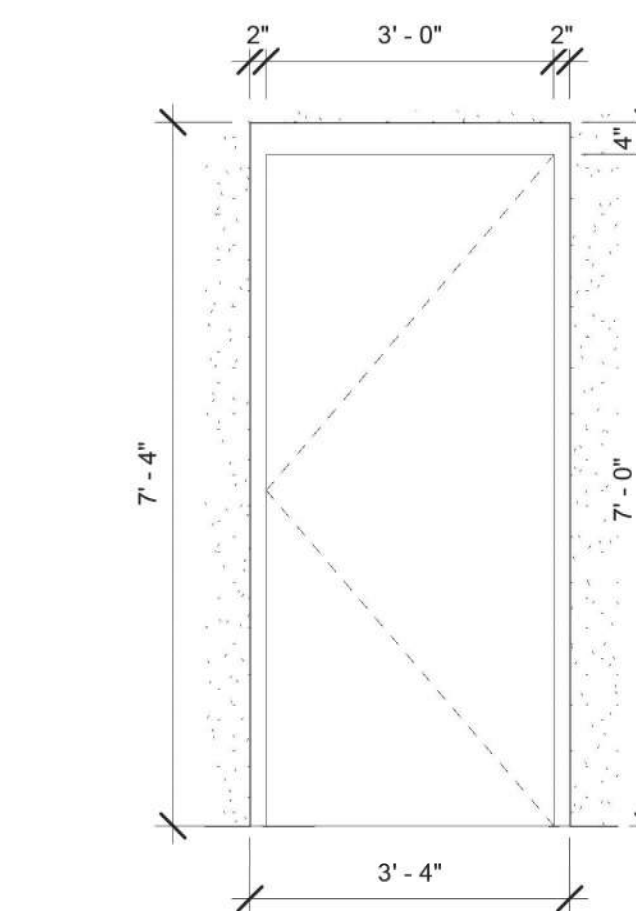
9 EXTERIOR SECTIONAL DOOR W/
BOLLARDS
1/2" = 1'-0"



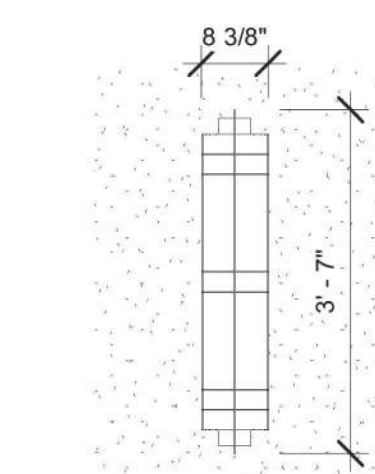
10 EXTERIOR DOUBLE DOOR_GLAZED
1/2" = 1'-0"



11 EXTERIOR DOUBLE DOOR_EGRESS
1/2" = 1'-0"



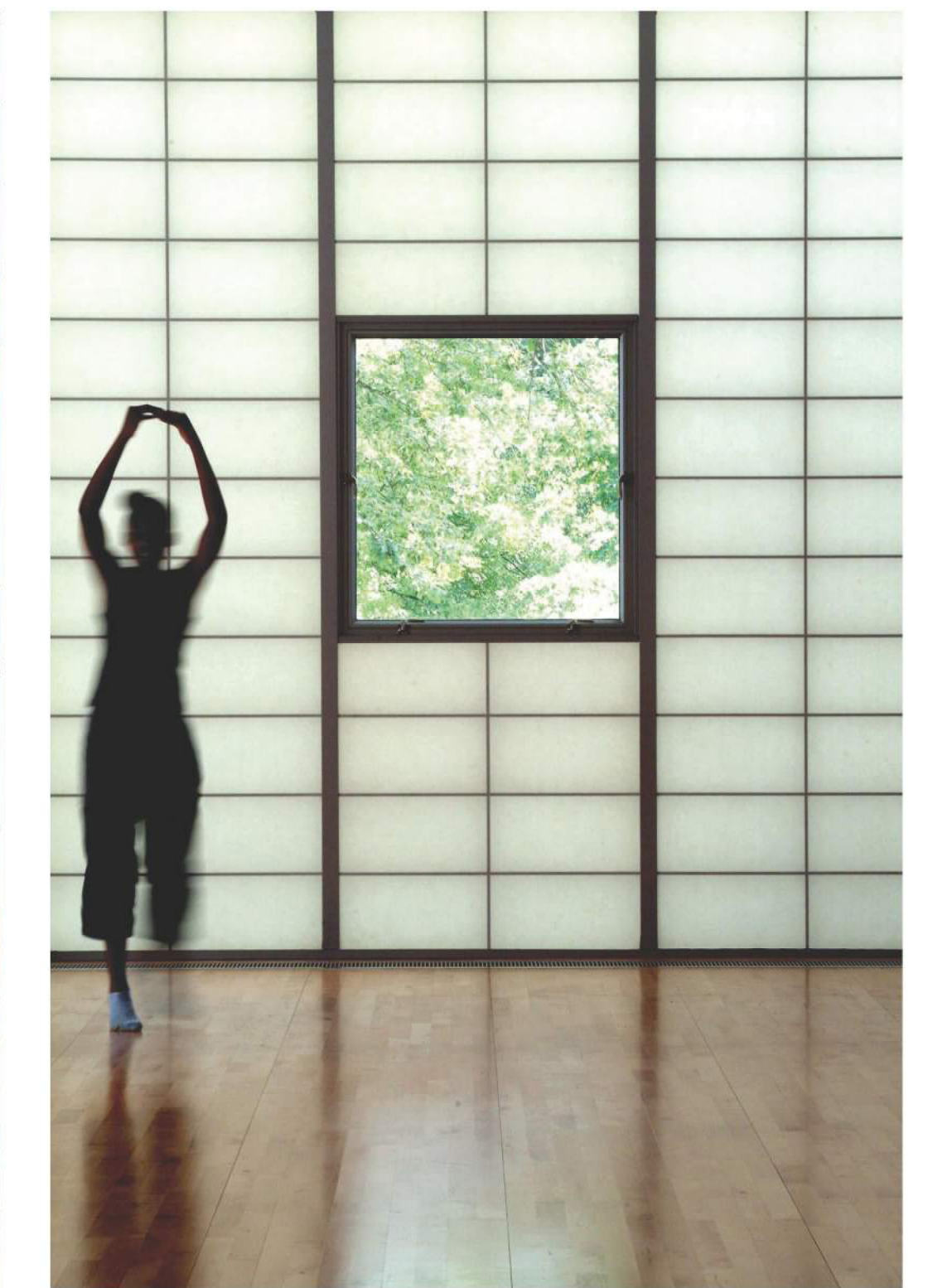
12 EXTERIOR SINGLE DOOR_EGRESS
1/2" = 1'-0"



13 EXTERIOR WALL SCONCE
1/2" = 1'-0"

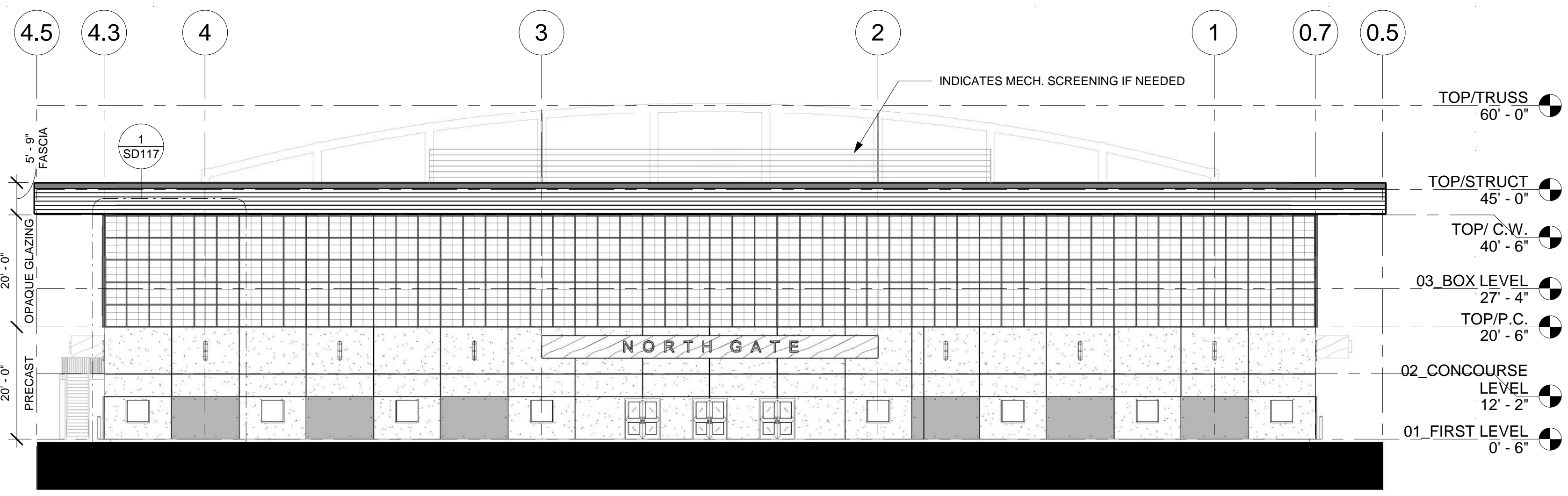


MATCH EXISTING PRECAST
FINISH FROM HOTEL ARISTA

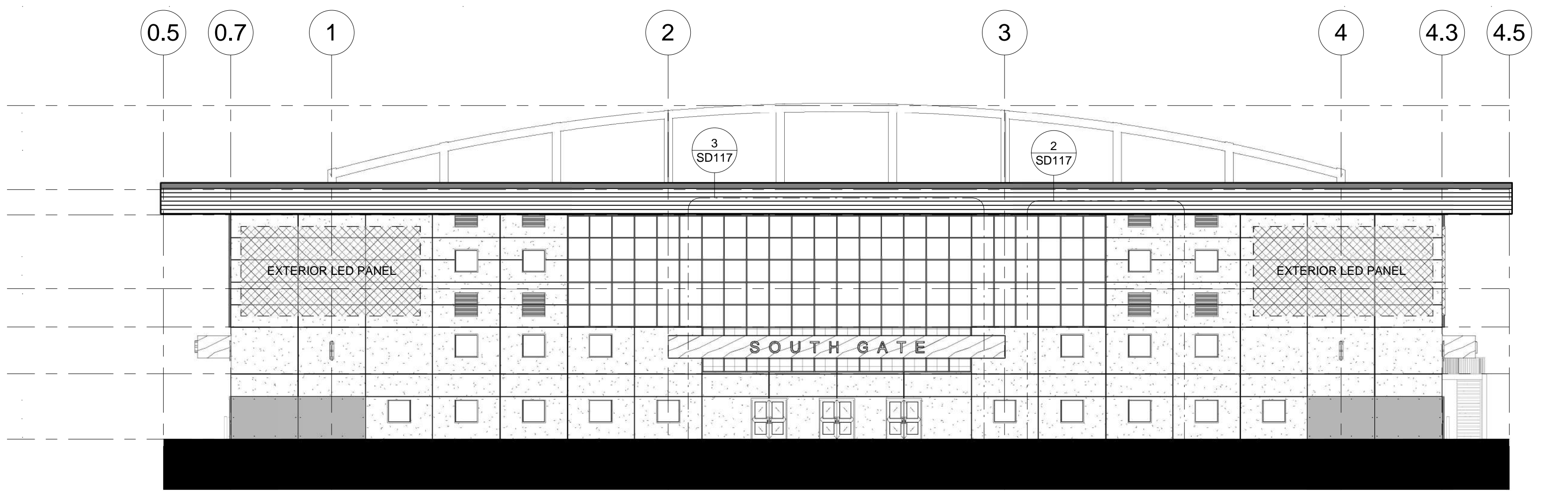


EXTERIOR FACADE MATERIALS

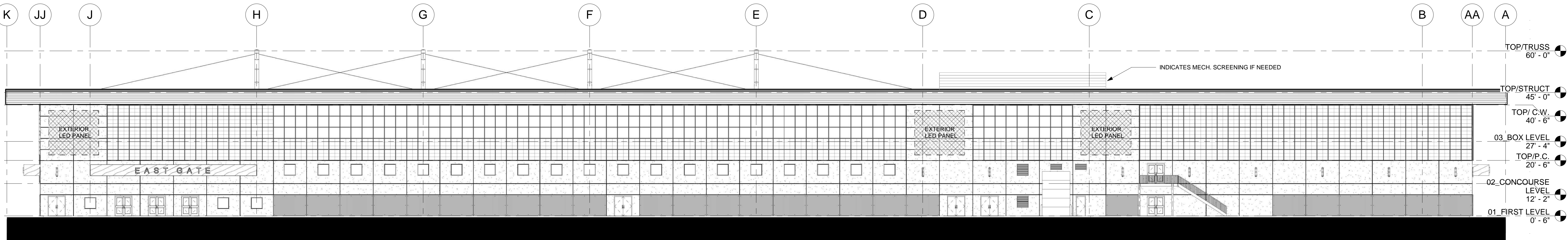
- G1** INSULATED OPAQUE GLAZING INFILL
- G2** INSULATED GREEN TINTED GLAZING INFILL
- G3** 4'x4' INSULATED FIXED WINDOW
- PC** SANDBLASTED FINISH INSULATED PRECAST PANELS
- CW** 4'x4' UNITIZED CURTAIN WALL SYSTEM
- WD** PRESURETREATED WOOD CANOPY
- LV** METAL LOUVRES
- GS** WALL MOUNTED PANELS - GREENSCAPE SYSTEM



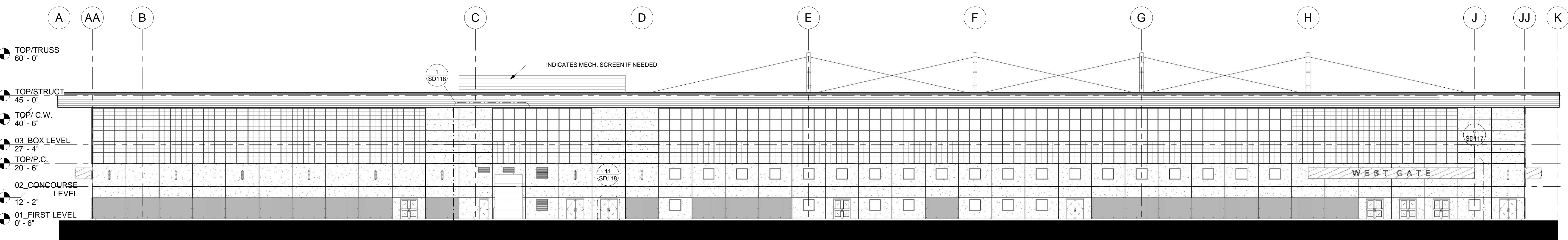
1 NORTH
1/16" = 1'-0"



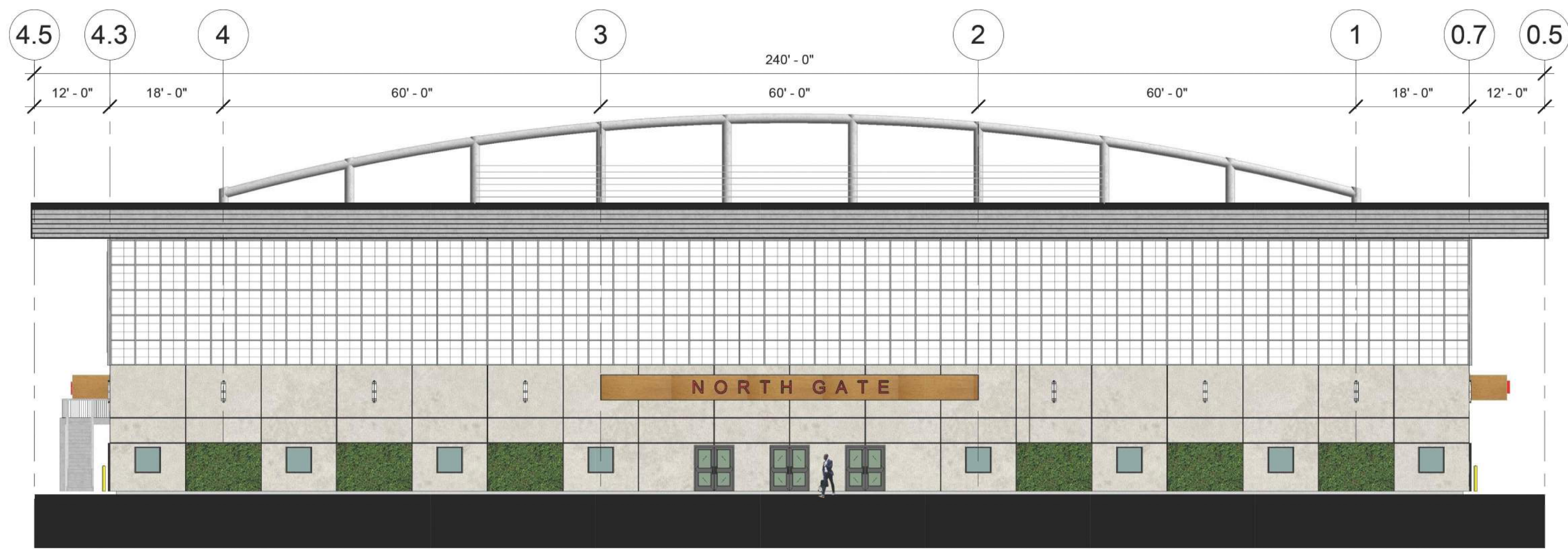
2 SOUTH
1/16" = 1'-0"



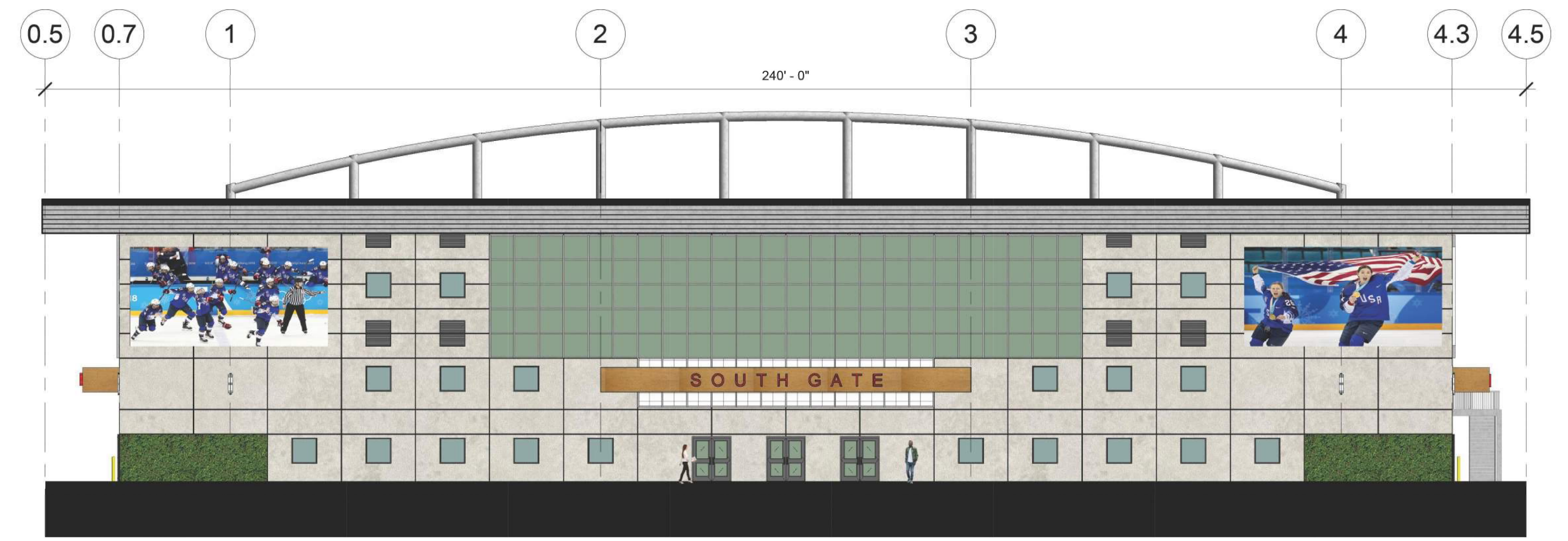
3 EAST
1/16" = 1'-0"



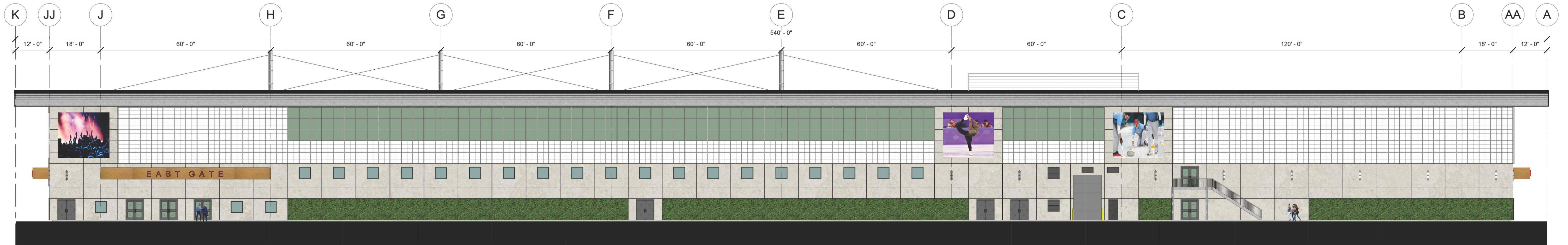
4 WEST
1/16" = 1'-0"



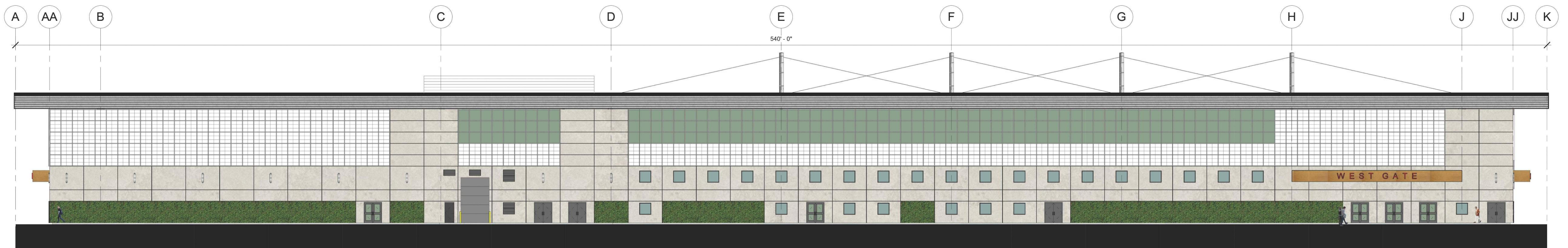
① NORTH_FINISH
1/16" = 1'-0"



② SOUTH_FINISH
1/16" = 1'-0"



③ EAST_FINISH
1/16" = 1'-0"



④ WEST_FINISH
1/16" = 1'-0"