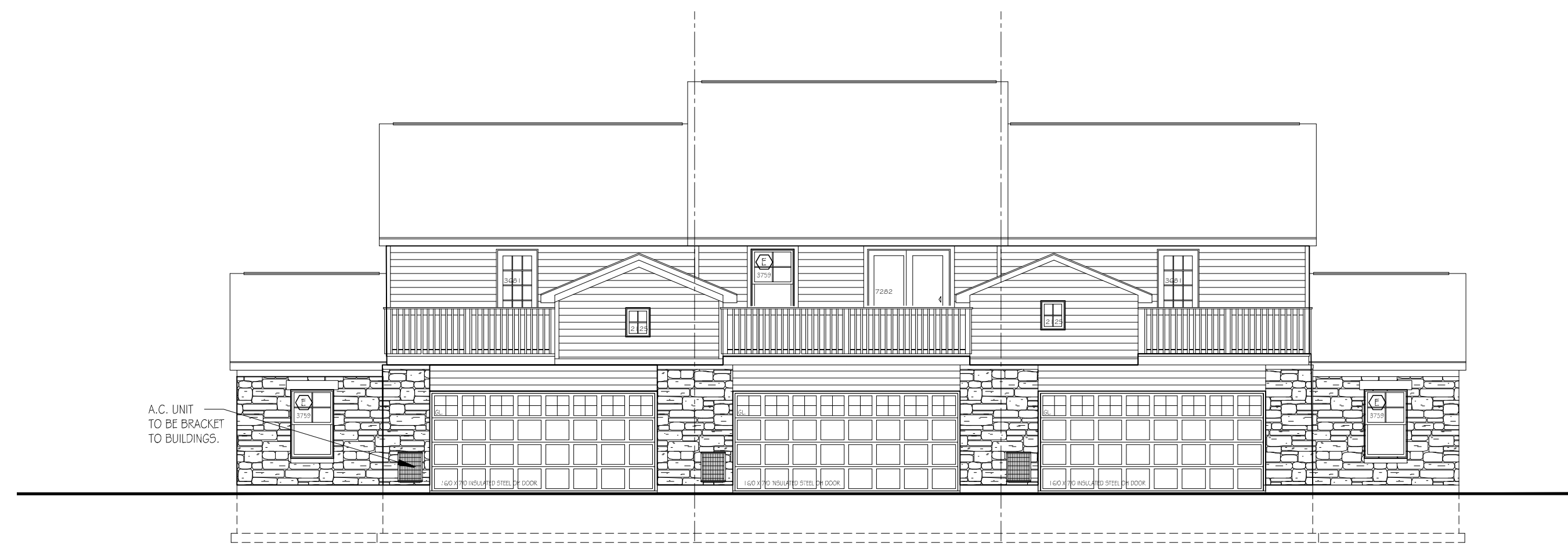


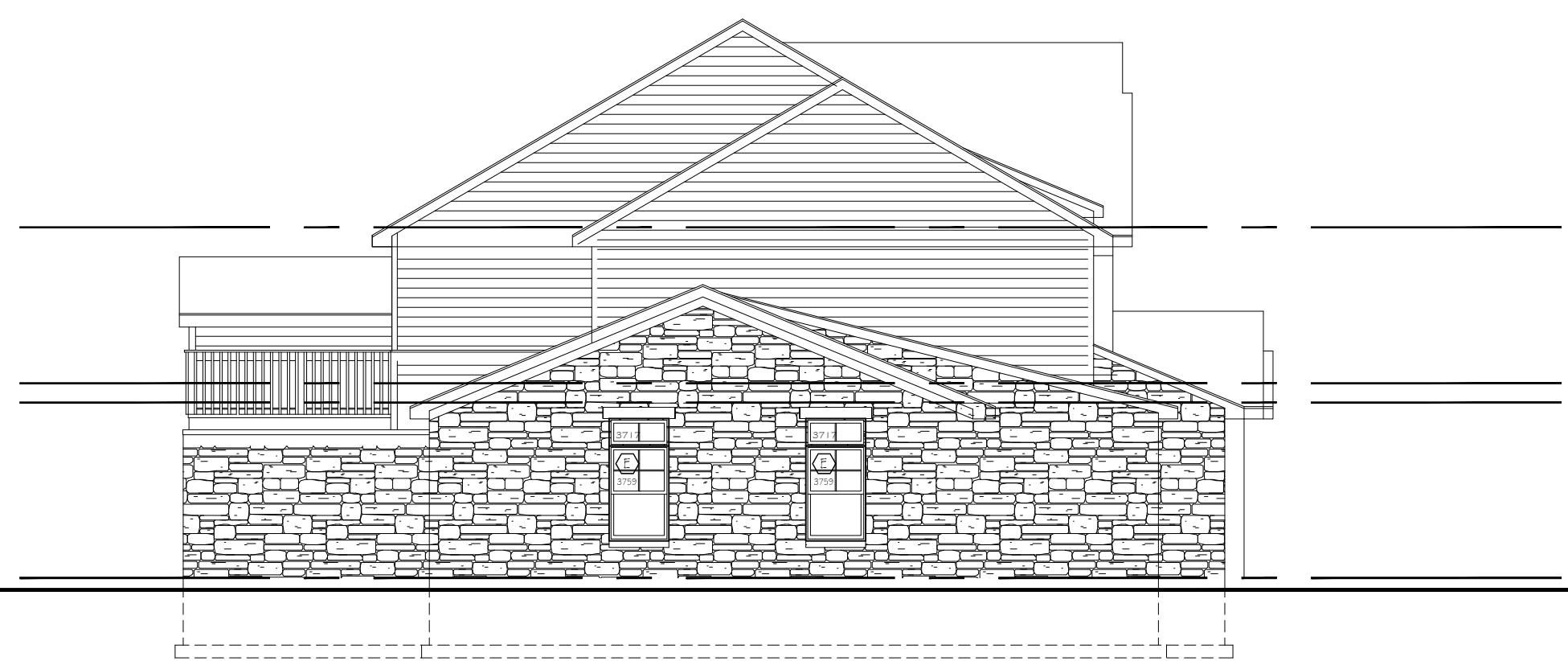


PROPOSED FRONT ELEVATION



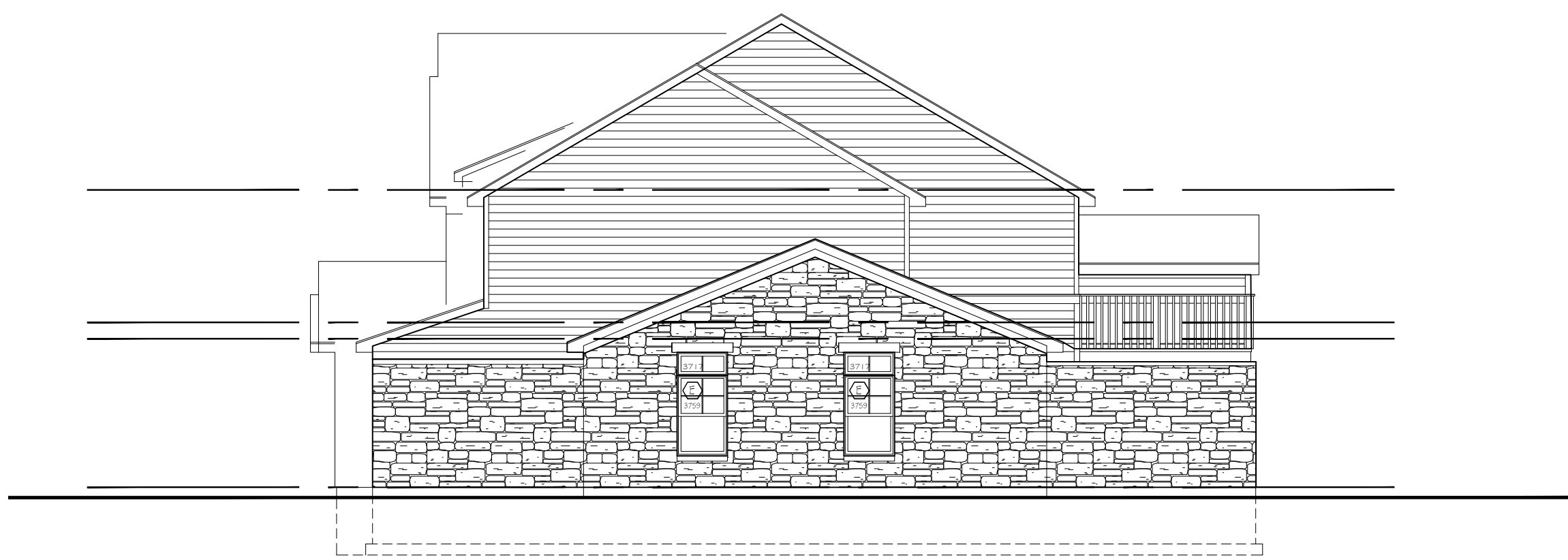
**REAR ELEVATION**

SCALE: 1/8"=1'-0"



**LEFT SIDE ELEVATION**

SCALE: 1/8"=1'-0"



**RIGHT SIDE ELEVATION**

SCALE: 1/8"=1'-0"



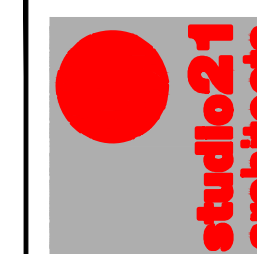
**THREE UNIT FRONT ELEVATION**

SCALE: 1/8"=1'-0"

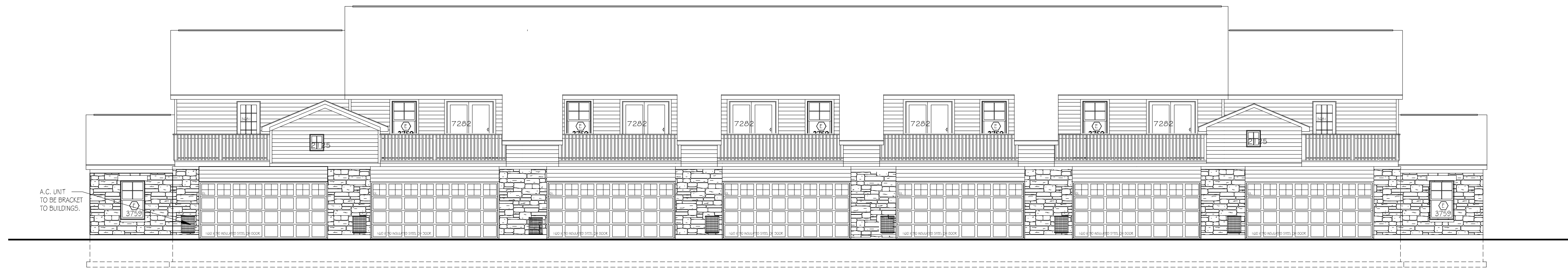
**MASONRY CALCULATION**

MASONRY = 1,957.37 SQUARE FEET = 50.1%  
 COMPOSITE = 1,955.00 SQUARE FEET = 49.9%  
 TOTAL = 3,912.37 SQUARE FEET

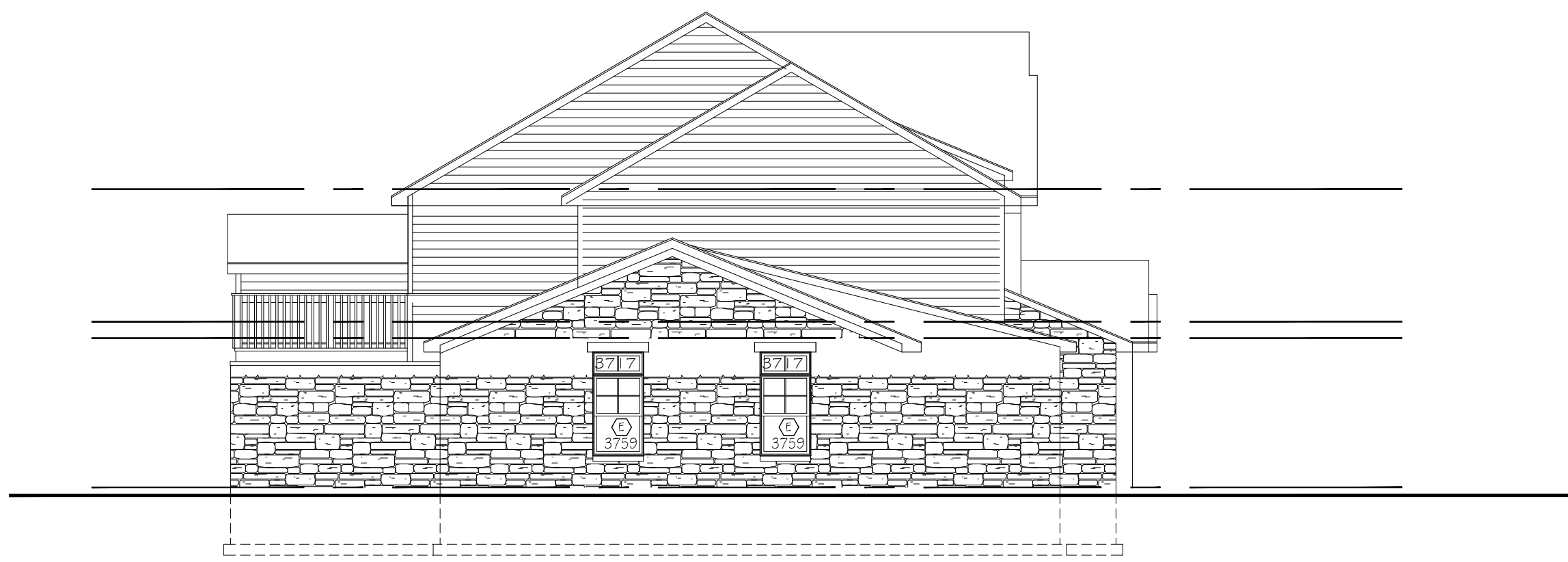
NOTE: SEE EIGHT UNIT ELEVATIONS FOR BUILDING MATERIALS



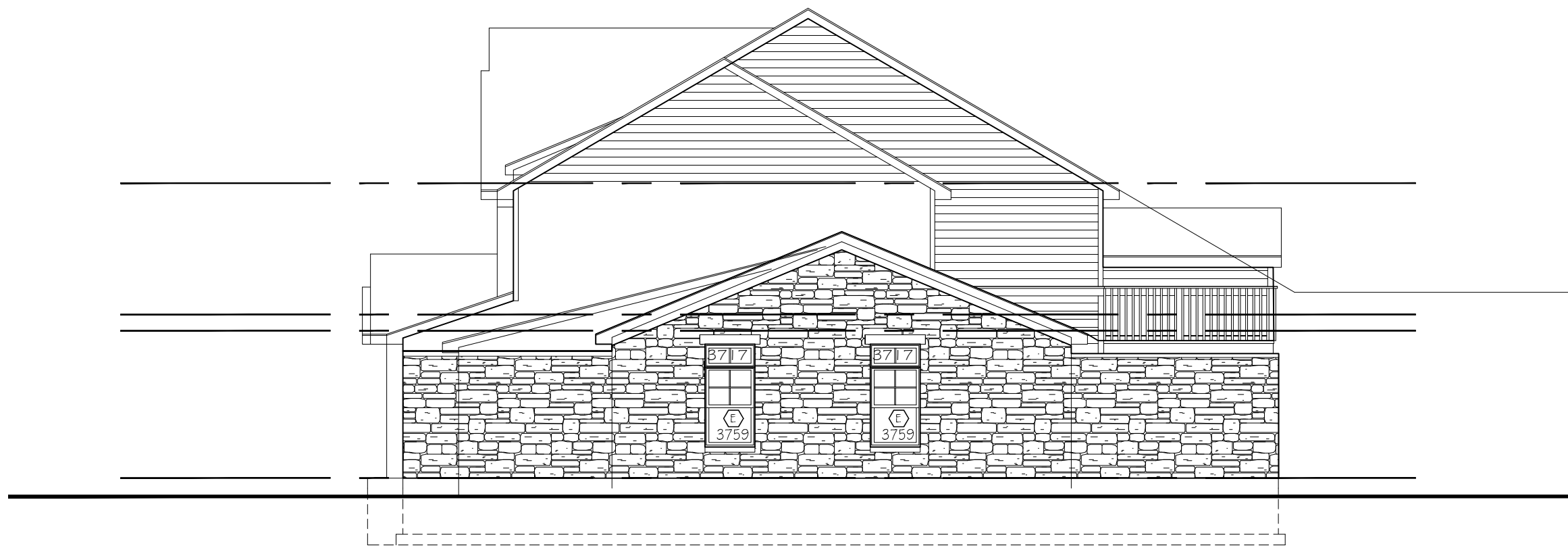
REVISIONS



REAR ELEVATION  
SCALE: 1/8"=1'-0"



LEFT SIDE ELEVATION  
SCALE: 1/8"=1'-0"



RIGHT SIDE ELEVATION  
SCALE: 1/8"=1'-0"



SEVEN UNIT FRONT ELEVATION  
SCALE: 1/8"=1'-0"