

# THE PROSPERITA & ORION STEM SCHOOL

Naperville, Illinois

## PRELIMINARY LANDSCAPE IMPROVEMENT PLANS

PREPARED BY:



126 S. Main Street  
Oswego, IL 60543  
p: 630 551-3355  
f: 630 551-3639  
schoppedesign.net

PREPARED FOR:

**VRUTTHI, LLC**  
3644 White Eagle Dr.  
Naperville, IL 60560

LOCATION MAP



SHEET INDEX

1. COVER SHEET
2. OVERALL PRELIMINARY LANDSCAPE PLAN
3. ORION STEM SCHOOL PRELIMINARY LANDSCAPE PLAN
4. THE PROSPERITA PRELIMINARY LANDSCAPE PLAN
5. DETAILS & SPECIFICATIONS

GENERAL NOTES

1. Contractor and/or sub-contractors shall verify locations of all underground utilities prior to digging. Contact J.U.L.I.E. (Joint Utility Locating for Excavators) at 1-800-892-0123 or dial 811.
2. Topographic & boundary information obtained from Preliminary Site Development Plan for The Prosperita and Orion Stem School prepared by Cemcon Ltd, dated 02/09/23.
3. Verify site conditions and information on drawings prior to commencement of work. Promptly report any concealed conditions, mistakes, discrepancies, or deviations from the information shown in the Contract Documents. The Owner is not responsible for unauthorized changes or extra work required to correct unreported discrepancies.
4. Secure and pay for permits, fees and inspections necessary for the proper execution of this work. Comply with codes applicable to this work.
5. Plants and other materials are quantified and summarized for the convenience of the Owner and jurisdictional agencies. Confirm and install sufficient quantities to complete the work as drawn. No additional payments will be made for materials required to complete the work as drawn.
6. Refer to the specifications for additional conditions, standards and notes.
7. Final locations of trees within rights-of-ways are subject to change based on the final driveway and utility locations.
8. Electric meters shall have a minimum of four feet (4') clear to the front and two feet (2') clear to each side. Transformer pads shall have a minimum five foot (5') clearance from all sides and ten feet (10') from the front. Trees shall be separated from electric facilities by a minimum of five feet (5').
9. Trees shall be set back a minimum of ten feet (10') horizontally from utility structures, including, but not limited to, manholes, valve vaults, valve boxes, fire hydrants, transformers and switch cans. Trees shall be set back a minimum of five feet (5') horizontally from storm sewer lines, sanitary sewer lines, and water mains in addition to storm sewer, sanitary sewer and water services. Contractor to make necessary adjustments under the approval of owner. Refer to civil drawings prepared by others.
10. The number, location and species of the parkway trees to be planted along West Street, Diehl Road and Mill Street shall be determined by the City at the time of building permit application for said lot(s) based on the provisions of Section 5-10-3.3 of Naperville Municipal Code.

UTILITY LOCATION NOTICE



Know what's below.  
Call before you dig.

Contractor and/or sub-contractors shall verify locations of all underground utilities prior to digging. Contact J.U.L.I.E. (Joint Utility Locating for Excavators) at 1-800-892-0123 or dial 811.

REVISION HISTORY

REV.	DATE	SHEET NUMBER	PURPOSE
8	-	-	-
7	-	-	-
6	-	-	-
5	-	-	-
4	-	-	-
3	-	-	-
2	2023-02-13	ALL	ISSUED IN RESPONSE TO CITY & COUNTY COMMENTS
1	2022-12-16	ALL	ISSUED IN RESPONSE TO 10/31/22 CITY COMMENTS
0	2022-10-05	ALL	ISSUED FOR CLIENT REVIEW

Naperville Project Number 22-1-097



Project For:  
**VRUTTHI, LLC**  
3644 WHITE EAGLE DR  
NAPERVILLE, IL 60560

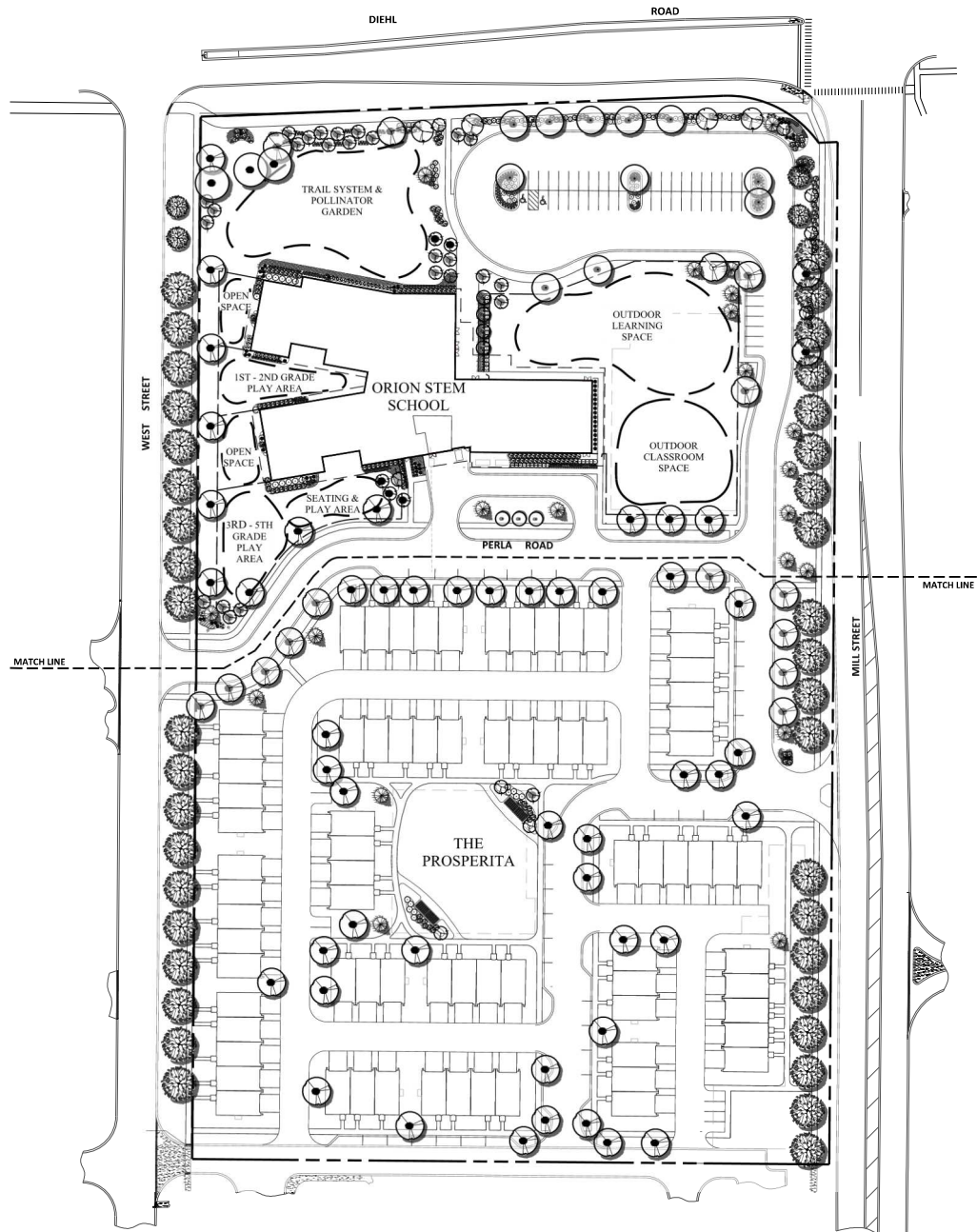
Project Name:  
**THE PROSPERITA &  
ORION STEM SCHOOL**  
Naperville, Illinois

Sheet Name:  
**PRELIMINARY  
LANDSCAPE PLAN  
COVER SHEET**



Revisions  
Date: 2022-10-05  
Scale: 3/8"=1'-0"  
Job #: 226.001.03  
Drawn:  
File:

SHEET:  
**1**



Prepared By:  
  
 Schoppe Design Associates, Inc.  
 LAND PLANNING & LANDSCAPE ARCHITECTURE  
 1216 S. Main Street  
 Chicago, IL 60643  
 P: 773.513.3030  
 F: 773.513.3039  
 schoppe@sdainc.com

Project For:  
**VRUTTHI, LLC**  
 344 WOODFIELD DR  
 NAPERVILLE, IL 60569

Project Name:  
**THE PROSPERITA & ORION STEM SCHOOL**  
 Naperville, Illinois

Sheet Name:  
**PRELIMINARY LANDSCAPE PLAN OVERALL PLAN**



Revisions

No.	Description	Date

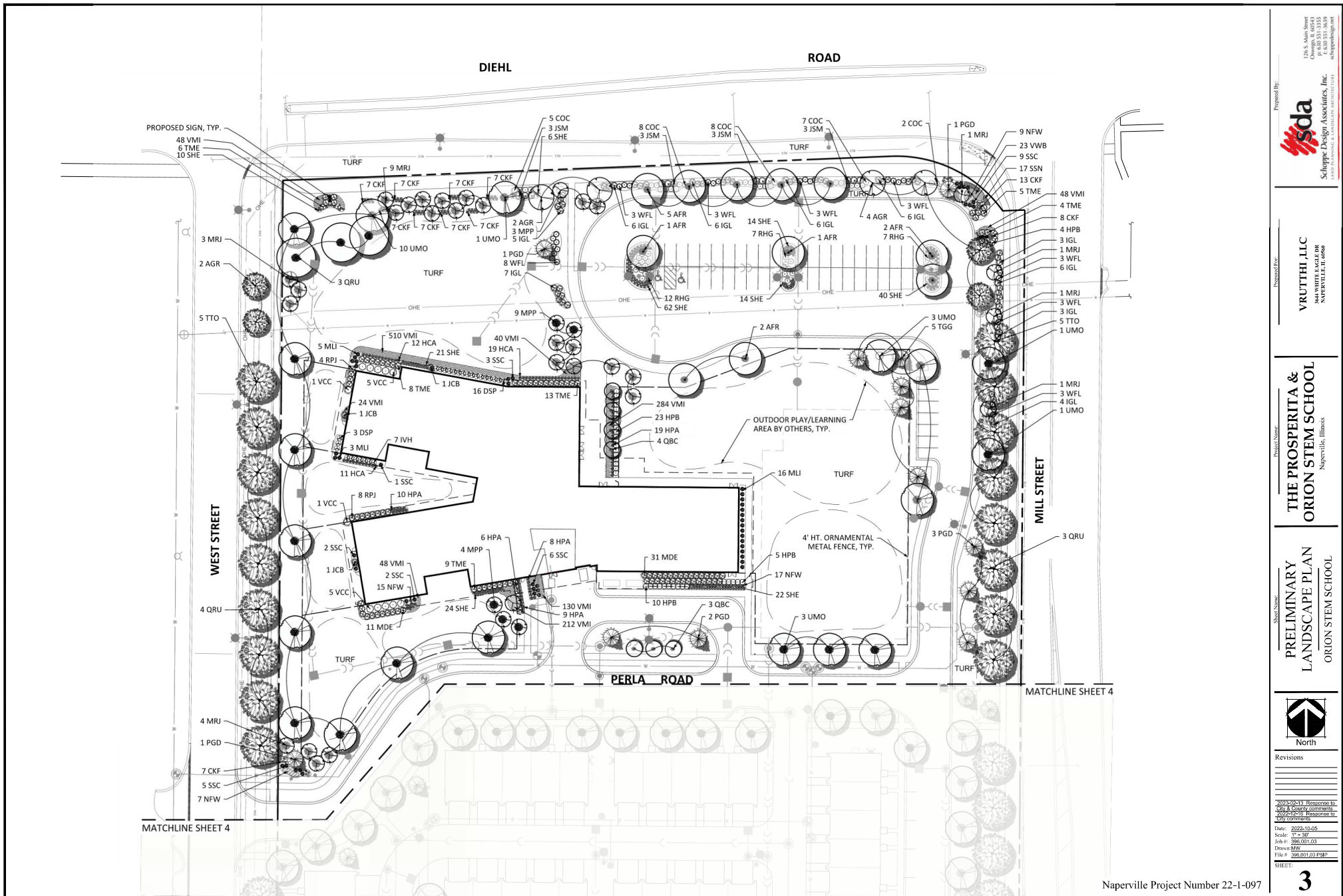
2020-2021 Illinois Professional Land Surveyor License No. 0000000000  
 City & County Commission  
 2020-2021 Illinois Professional Landscape Architect License No. 0000000000  
 City Commission

Date: 2022-10-05  
 Scale: 1"=50'  
 Job #: 22-001-03  
 Drawn: J.M.W.  
 Title: 22-001-03-02P

SHEET: **2**

Naperville Project Number 22-1-097

EXHIBIT E



PROPOSED SIGN, TYP.  
48 VMI  
6 TME  
10 SHE

MATCHLINE SHEET 4

MATCHLINE SHEET 4

Presented By:  
**sda**  
Schoppe Design Associates, Inc.  
LAND PLANNING & LANDSCAPE ARCHITECTURE  
126 S. Main Street  
Chicago, IL 60643  
P: 312.924.1200  
F: 312.924.3039  
schoppe@sdainc.com

Project For:  
**VRUTHI, LLC**  
444 WOODS LAGER DR  
NAPERVILLE, IL 60569

Project Name:  
**THE PROSPERITA &  
ORION STEM SCHOOL**  
Naperville, Illinois

Client Name:  
**PRELIMINARY  
LANDSCAPE PLAN  
ORION STEM SCHOOL**



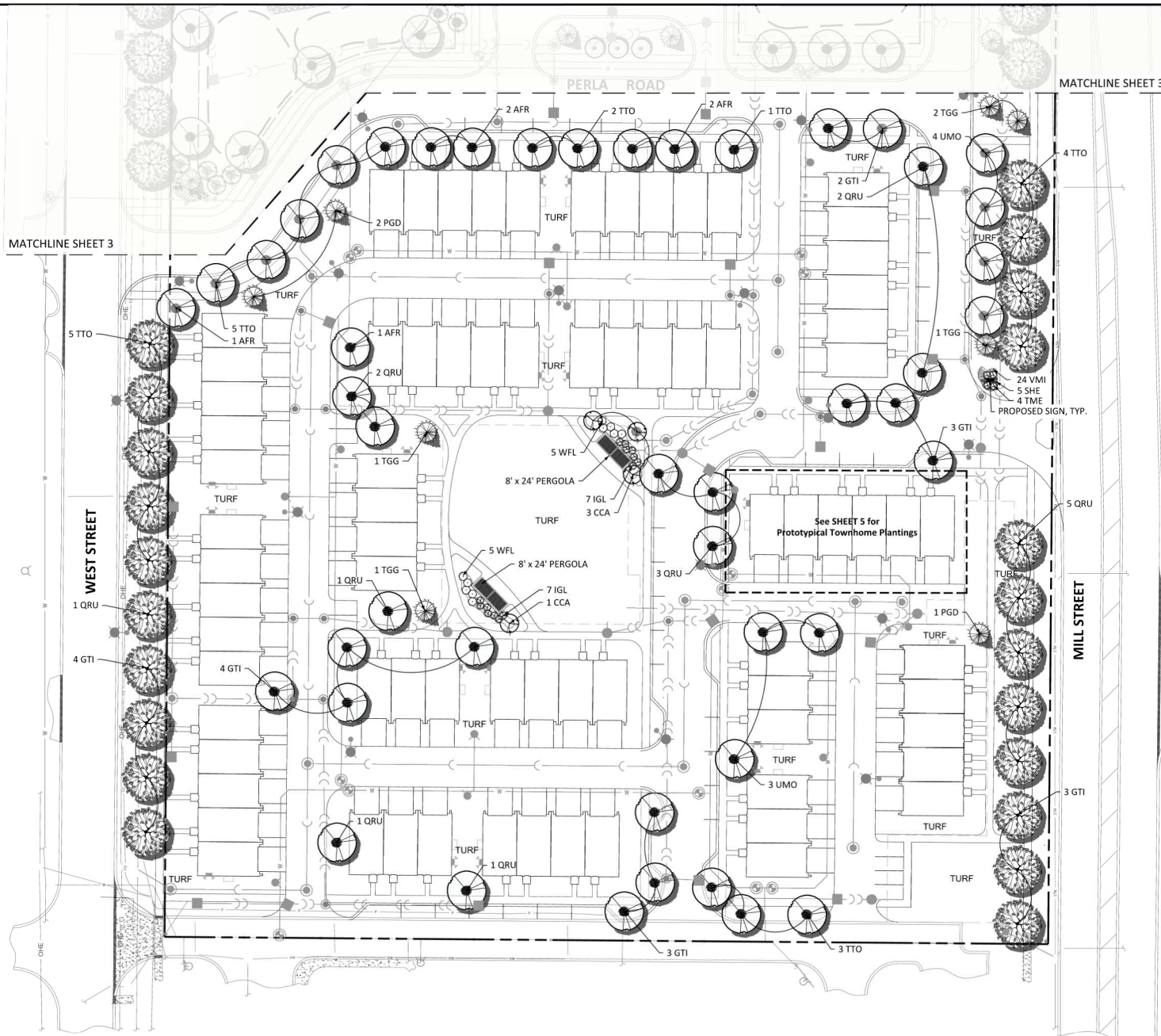
Revisions

NO.	DATE	DESCRIPTION

Date: 2022-10-05  
Scale: 1"=30'  
Job #: 22-1-097  
Drawn: MW  
Title: PRELIMINARY LANDSCAPE PLAN  
SHEET:

Naperville Project Number 22-1-097

**EXHIBIT E**



126 S. Main Street  
 Chicago, IL 60643  
 P. 773.313.3039  
 sda@schoopedesign.com



Presented By:  
**VRUTTHI, LLC**  
 344 WOODS AVE. #200  
 NAPERVILLE, IL 60569

Project Name:  
**THE PROSPERITA &  
 ORION STEM SCHOOL**  
 Naperville, Illinois

Client Name:  
**PRELIMINARY  
 LANDSCAPE PLAN**  
 THE PROSPERITA



Revisions

NO.	DESCRIPTION	DATE

2025-10-13 10:00:00 AM  
 City of Naperville  
 2025-10-13 10:00:00 AM  
 City of Naperville

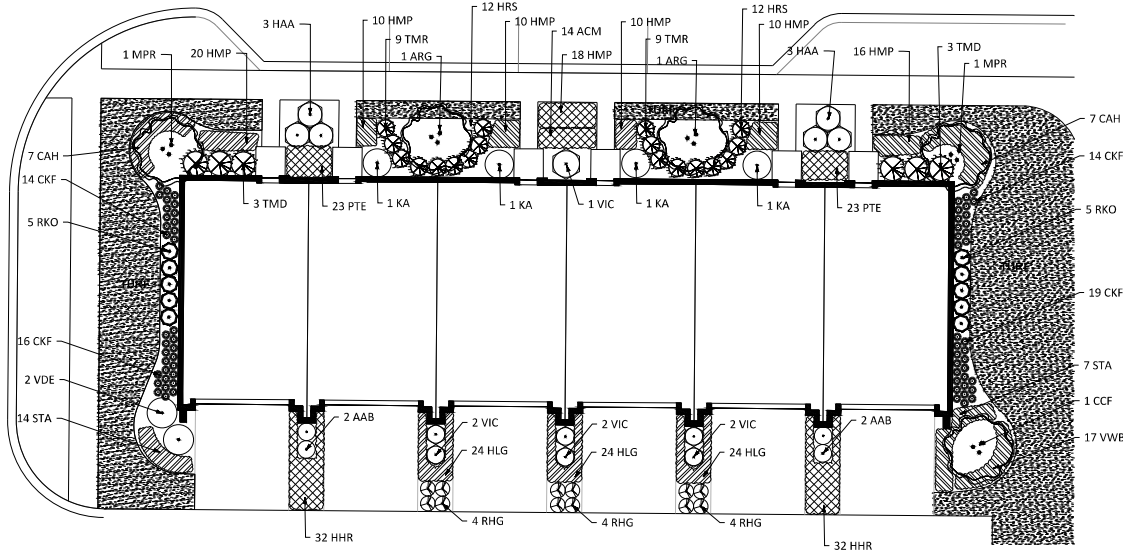
Date: 2025-10-05  
 Scale: 1/8" = 1'-0"  
 Job #: 250103-1.03  
 Drawn: MW / CK  
 Title #: 250103-1.03-01

SHEET: **4**

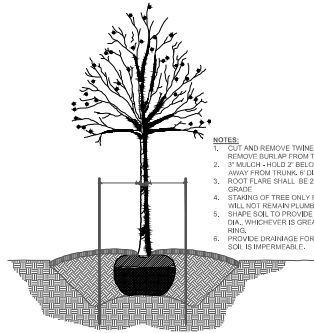
Naperville Project Number 22-1-097

EXHIBIT E

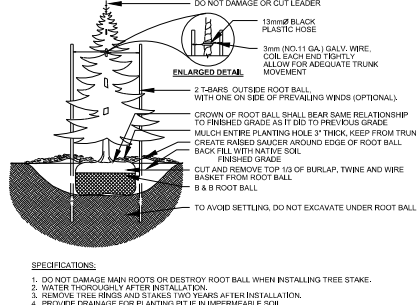
**1 TOWNHOME PLANTING PROTOTYPE DETAIL PLAN**  
SCALE: 1" = 10'



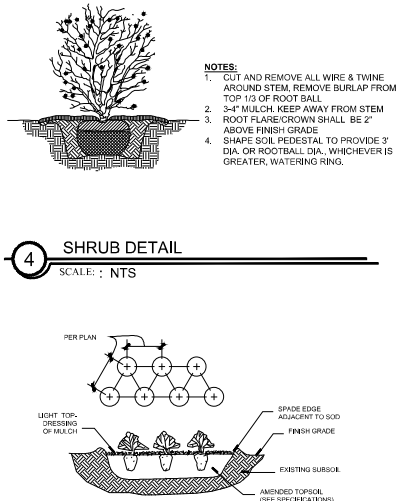
**2 DECIDUOUS TREE DETAIL**  
SCALE: NTS



**3 CONIFEROUS TREE DETAIL**  
SCALE: NTS



**4 SHRUB DETAIL**  
SCALE: NTS



**5 PERENNIAL DETAIL**  
SCALE: NTS

**MATERIALS LIST (TOWNHOME PROTOTYPE ONLY)**

Code	Botanical Name	Common Name	Qty	Unit	Size
<b>Deciduous Trees</b>					
AGR	Amelanchier grandifolia 'Autumn Brilliance'	Autumn Brilliance Serviceberry	5	Each	6' Hgt.
CCF	Cercis canadensis 'Forest Pansy'	Forest Pansy Redbud	1	Each	6' Hgt.
MRF	Malus 'Red Jewel'	Red Jewel Crabapple	2	Each	6' Hgt.
<b>Deciduous Shrubs</b>					
ACM	Arctostaphylos uva-ursi	Red Chokeberry	4	Each	36" Hgt.
CAH	Celastrus scandens 'Hummelbird'	Summer-leaf Cestrum	14	Each	24" Hgt.
HAA	Hydrangea arborescens 'Annabelle'	Annabelle Hydrangea	6	Each	24" Hgt.
RHG	Rhus aromatica 'Gro-Low'	Gro-Low Sumac	12	Each	18" Hgt.
RPG	Rosa 'Knock Out'	Knock Out Rose	19	Each	24" Hgt.
VDE	Viburnum dentatum	Arrowwood Viburnum	2	Each	36" Hgt.
VIC	Viburnum cerasifolium 'Aurora'	Green Spice Viburnum	7	Each	36" Hgt.
<b>Evergreen Shrubs</b>					
KA	Rhododendron 'Kaiser'	Kaiser Azalea	4	Each	24" Hgt.
TMR	Taxus media 'Burkii'	Summit Juniper	6	Each	24" Hgt.
TMR	Taxus media 'Thurberii'	Summit Juniper	18	Each	18" Hgt.
<b>Perennials, Ornamental Grasses and Groundcovers</b>					
AGM	Anemone 'Anemone'	Allegre Daisy A-18	14	Each	1 Gal.
OFF	Oenothera 'Flame King'	Flame King Grass	63	Each	1 Gal.
HBC	Hebe 'Hemlock Hill'	Hebe	64	Each	1 Gal.
HCC	Hebe 'Hemlock Hill'	Hebe	72	Each	1 Gal.
HMP	Heuchera micrantha 'Palace Purple'	Purple Palace Coral Bells	94	Each	1 Gal.
HRS	Hebe 'Royal Standard'	Royal Standard Hebe	24	Each	1 Gal.
PTE	Physocarpus opulifolius	Physocarpus	48	Each	24" Hgt.
STA	Stachys spectabilis 'Autumn Joy'	Autumn Joy Sedum	21	Each	1 Gal.
VMB	Vernonia 'Waterpiper'	Waterpiper Blue Speeder	17	Each	1 Gal.

**MATERIALS LIST**

Code	Botanical Name	Common Name	Qty	Unit	Size
<b>Street Trees (Group)</b>					
AFT	Aster 'Fountain'	Fountain Aster	174	Each	2.5 Gal.
GTI	Geometric 'Illumination'	Illumination	19	Each	2.5 Gal.
QBC	Quercus 'Blackwood'	Blackwood Oak	7	Each	2.5 Gal.
QRU	Quercus 'Rubra'	Rubra Oak	26	Each	2.5 Gal.
TTO	Tilia 'Tomlinson'	Tomlinson Linden	50	Each	2.5 Gal.
UMD	Ulmus 'Morton'	Morton Elm	35	Each	2.5 Gal.
<b>Evergreen Trees</b>					
PGD	Podocarpus 'Densata'	Black Hills Spruce	11	Each	6' Hgt.
TGG	Thuja 'Green Giant'	Green Giant Arborvitae	10	Each	6' Hgt.
<b>Underside Trees</b>					
AGR	Amelanchier grandifolia 'Autumn Brilliance'	Autumn Brilliance Serviceberry	8	Each	6' Hgt.
CCF	Cercis canadensis	Eastern Redbud	4	Each	6' Hgt.
MRF	Malus 'Red Jewel'	Red Jewel Crabapple	16	Each	6' Hgt.
MRJ	Malus 'Red Jewel'	Red Jewel Crabapple	20	Each	6' Hgt.
<b>Deciduous Shrubs</b>					
DSP	Dianthus 'Splendens'	Nightlow Bush Honeysuckle	19	Each	24" Hgt.
HPB	Hydrangea 'Boto'	Boto Hydrangea	42	Each	18" Hgt.
HA	Hieracium 'Hemlock Hill'	Hemlock Hill Virginia Sweetpine	7	Each	24" Hgt.
RHG	Rhus aromatica 'Gro-Low'	Gro-Low Sumac	26	Each	18" Hgt.
VCC	Viburnum cerasifolium 'Compactum'	Compactum Viburnum	12	Each	36" Hgt.
WFL	Wigelia 'Florida'	Sonic Bloom Pink Wigelia	39	Each	30" Hgt.
<b>Evergreen Shrubs</b>					
IGL	Ilex glabra 'Shamrock'	Shamrock Inkberry	66	Each	30" Hgt.
JCB	Juniperus communis 'Blue Point'	Blue Point Juniper	3	Each	6' Hgt.
JSM	Juniperus communis 'Mowbray'	Mowbray Juniper	12	Each	12" Hgt.
MEI	Microbiota decussata 'Ditto Prip'	Celtic Pride Siberian Cypress	42	Each	18" Hgt.
RPJ	Rhododendron 'P.J.M.'	P.J.M. Rhododendron	12	Each	24" Hgt.
TME	Taxus media 'Everjoy'	Everjoy Yew	43	Each	18" Hgt.
<b>Perennials, Ornamental Grasses and Groundcovers</b>					
CAH	Celastrus 'Hummelbird'	Flame King Grass	44	Each	1 Gal.
HCA	Heuchera 'Carmel'	Carmel Alumroot	42	Each	1 Gal.
HPA	Hebe 'Palace'	Palace Hebe	52	Each	1 Gal.
MLT	Miscanthus 'Titan'	Titan Miscanthus	8	Each	1 Gal.
NFW	Nepenthes 'Fascination'	Fascination Nepenthes	41	Each	1 Gal.
SHE	Sparganium angustifolium	Prairie Dropseed	197	Each	1 Gal.
SSC	Schizanthus scoparium 'Princess'	Princess Bluebell	28	Each	1 Gal.
SSN	Sedum spectabile 'Nectar'	Nectar Sedum	17	Each	1 Gal.
MM	Miscanthus	Perennials	56	Each	24" Hgt.

**2 DECIDUOUS TREE DETAIL**  
SCALE: NTS

**3 CONIFEROUS TREE DETAIL**  
SCALE: NTS

**5 PERENNIAL DETAIL**  
SCALE: NTS