

# Preliminary Landscape Plan

# Polo Club

Naperville, Illinois

July 6, 2018

## CONSULTANTS:



LANDSCAPE ARCHITECT:  
GARY R. WEBER ASSOCIATES, INC  
212 SOUTH MAIN STREET  
WHEATON, ILLINOIS 60187



CIVIL ENGINEER:  
CEMCON, LTD.  
2280 WHITE OAK CIRCLE, SUITE 100  
AURORA, ILLINOIS 60502



LOCATION MAP

SCALE: 1"=600'

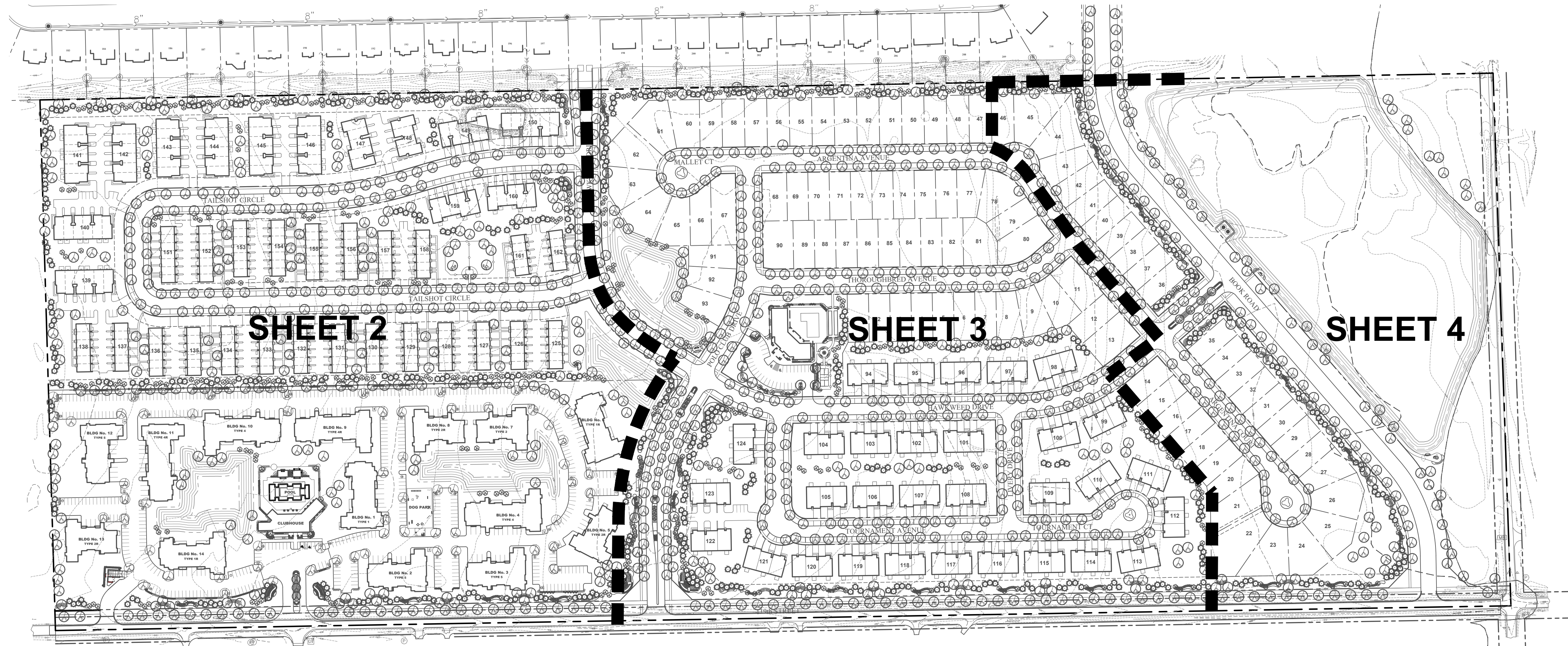
## INDEX OF SHEETS

<u>SHEET NO.</u>	<u>DESCRIPTION</u>
0	COVER SHEET
1	OVERALL LANDSCAPE PLAN
2	PRELIMINARY LANDSCAPE PLAN
3	PRELIMINARY LANDSCAPE PLAN
4	PRELIMINARY LANDSCAPE PLAN
5	LANDSCAPE DETAILS
6	LANDSCAPE DETAILS
7	TYPICAL FOUNDATION LANDSCAPE PLANS
8	TREE PRESERVATION PLAN



# GENERAL NOTES

- TREES SHALL BE INSTALLED A MINIMUM OF FIVE (5) FEET HORIZONTALLY FROM UNDERGROUND ELECTRICAL FEEDERS, SANITARY SEWERS, SANITARY SERVICES, WATER MAINS, AND WATER SERVICES. TREES SHALL BE INSTALLED A MINIMUM OF TEN (10) FEET HORIZONTALLY FROM UTILITY STRUCTURES AND APPURTENANCES, INCLUDING, BUT NOT LIMITED TO, MANHOLES, VALVE VAULTS, VALVE BOXES AND FIRE HYDRANTS. NO TREES, SHRUBS OR OBSTACLES WILL BE ALLOWED 10' IN FRONT OF, 5' ON THE SIDES, AND 7' TO THE REAR OF THE ELECTRICAL TRANSFORMER.
- LOCATION OF TREES MAY REQUIRE ADJUSTMENT BASED ON FINAL ENGINEERING PLANS.
- CONTRACTOR SHALL VERIFY UNDERGROUND UTILITY LINES AND IS RESPONSIBLE FOR ANY DAMAGE.
- CONTRACTOR SHALL VERIFY ALL EXISTING CONDITIONS IN THE FIELD PRIOR TO CONSTRUCTION AND SHALL NOTIFY LANDSCAPE ARCHITECT OF ANY VARIANCE.
- MATERIAL QUANTITIES SHOWN ARE FOR CONTRACTOR'S CONVENIENCE ONLY. THE CONTRACTOR MUST VERIFY ALL MATERIAL AND SUPPLY SUFFICIENT MATERIALS TO COMPLETE THE JOB PER PLAN.
- THE LANDSCAPE ARCHITECT RESERVES THE RIGHT TO INSPECT TREES AND SHRUBS EITHER AT PLACE OF GROWTH OR AT SITE BEFORE PLANTING, FOR COMPLIANCE WITH REQUIREMENTS OF VARIETY, SIZE AND QUALITY.
- WORK SHALL CONFORM TO AMERICAN STANDARD FOR NURSERY STOCK, STATE OF ILLINOIS HORTICULTURAL STANDARDS, AND LOCAL MUNICIPAL REQUIREMENTS.
- CONTRACTOR SHALL SECURE AND PAY FOR ALL PERMITS, FEES, AND INSPECTIONS NECESSARY FOR THE PROPER EXECUTION OF THIS WORK AND COMPLY WITH ALL CODES APPLICABLE TO THIS WORK.
- SEE GENERAL CONDITIONS AND SPECIFICATIONS FOR LANDSCAPE WORK FOR ADDITIONAL REQUIREMENTS.

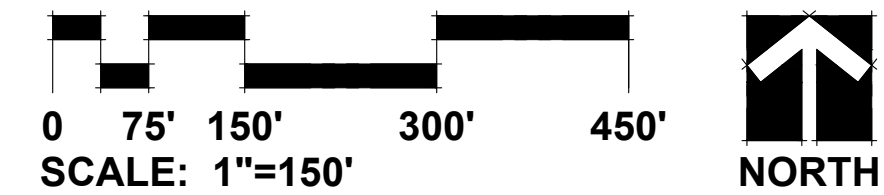


## REPRESENTATIVE PLANT LIST

Key	Botanical/Common Name	Size	Remarks	Key	Botanical/Common Name	Size	Remarks
	<b>SHADE TREES</b>				<b>EVERGREEN TREES</b>		
	Acer x freemanii 'Jeffer's Red'	2 1/2" Cal.			Abies concolor	6' Tall	
	Acer miyabei 'Morton'	2 1/2" Cal.			Picea glauca 'Densata'	6' Tall	
	Acer saccharum 'Green Mountain'	2 1/2" Cal.			Picea pungens	6' Tall	
	Celtis occidentalis	2 1/2" Cal.			Picea amarica	6' Tall	
	Gleditsia triacanthos var. inermis 'Skycole'	2 1/2" Cal.			<b>DECIDUOUS SHRUBS</b>		
	Platanus x acerifolia 'Exclamation'	2 1/2" Cal.			Cornus alba 'Baibata'	30" Tall	3' O.C.
	Quercus bicolor	2 1/2" Cal.			Cornus sanguinea 'Cata'	24" Tall	3' O.C.
	Quercus rubra	2 1/2" Cal.			Itea virginica 'Sprich'	24" Tall	3' O.C.
	Quercus macrocarpa	2 1/2" Cal.			Hydrangea macrophylla 'Bailmer'	24" Tall	3' O.C.
	Tilia americana 'Redmond'	2 1/2" Cal.			Rosa 'Radcon'	24" Tall	3' O.C.
	Tilia cordata 'Greenspire'	2 1/2" Cal.			Syringa meyeri 'Palibin'	24" Tall	4' O.C.
	Ulmus carpiniifolia 'New Horizon'	2 1/2" Cal.			Viburnum dentatum	36" Tall	5' O.C.
	<b>ORNAMENTAL TREES</b>				Viburnum trilobum 'Hah's'	36" Tall	4' O.C.
	Amelanchier grandiflora	6' Tall	Multi-Stem		<b>EVERGREEN SHRUBS</b>		
	Betula nigra	6' Tall	Multi-Stem		Juniperus chinensis v. sargentii 'Viridis'	24" Wide	5' O.C.
	Cercis canadensis	6' Tall	Multi-Stem		Juniperus chinensis 'Seagreen'	30" Wide	4' O.C.
	Crataegus crus-galli inermis	6' Tall	Multi-Stem		Juniperus chinensis 'Kallays Compact'	24" Wide	4' O.C.
	Malus 'Prairifire'	6' Tall	Multi-Stem				
	Syringa reticulata 'Ivory Silk'	6' Tall	Multi-Stem				

Key	Botanical/Common Name	Size	Remarks
	<b>PERENNIALS AND ORNAMENTAL GRASSES</b>		
	Allium 'Summer Beauty'	#1	18" O.C.
	Calamagrostis x acutiflora 'Karl Foerster'	#2	24" O.C.
	Hemerocallis 'Happy Returns'	#1	18" O.C.
	Hemerocallis 'Rosy Returns'	#1	24" O.C.
	Panicum virgatum 'Northwind'	#2	24" O.C.
	Pennisetum alopecuroides 'Hameln'	#2	24" O.C.
	Phlox 'Forever Pink'	#1	18" O.C.
	Perovskia atriplicifolia 'Little Spire'	#1	18" O.C.
	Rudbeckia fulgida 'Goldsturm'	#1	18" O.C.
	Sporobolus heterolepis	#1	18" O.C.

## OVERALL LANDSCAPE PLAN



NOTE: PARKWAY TREES TO BE ADJUSTED AROUND UTILITIES ON FINAL LANDSCAPE PLANS.

**GRWA**  
 GARY R. WEBER ASSOCIATES, INC.  
 LAND PLANNING  
 ECOLOGICAL CONSULTING  
 LANDSCAPE ARCHITECTURE  
 212 SOUTH MAIN STREET  
 WHEATON, ILLINOIS 60187  
 PHONE: 630-668-7197

CLIENTS  
**D.R. HORTON**  
*America's Builder*  
 750 E. BUNKER COURT, SUITE 500  
 VERNON HILLS, IL 60061  
**OCULUS DEVELOPMENT**  
 1202 W. MONROE STREET  
 CHICAGO, IL 60607  
 ENGINEER:  
**CEMCON, LTD.**  
 2280 WHITE OAK CIR, SUITE 100  
 AURORA, ILLINOIS 60502

**POLO CLUB**  
 NAPERVILLE, ILLINOIS  
**OVERALL LANDSCAPE PLAN**

REVISIONS	DATE
3	7.06.18
2	6.04.18
1	5.15.18

DATE 3.26.18  
 PROJECT NO. DR1705  
 DRAWN MGM  
 CHECKED JCT  
 SHEET NO.



GARY R. WEBER  
ASSOCIATES, INC.  
LAND PLANNING  
ECOLOGICAL CONSULTING  
LANDSCAPE ARCHITECTURE  
212 SOUTH MAIN STREET  
WHEATON, ILLINOIS 60187  
PHONE: 630-668-7197

CLIENTS  
**D.R. HORTON**  
*America's Builder*  
750 E. BUNKER COURT, SUITE 500  
VERNON HILLS, IL 60061  
**OCULUS DEVELOPMENT**  
1202 W. MONROE STREET  
CHICAGO, IL 60607  
ENGINEER:  
**CEMCON, LTD.**  
2280 WHITE OAK CIR, SUITE 100  
AURORA, ILLINOIS 60502

**POLO CLUB**  
NAPERVILLE, ILLINOIS  
**PRELIMINARY LANDSCAPE PLAN**

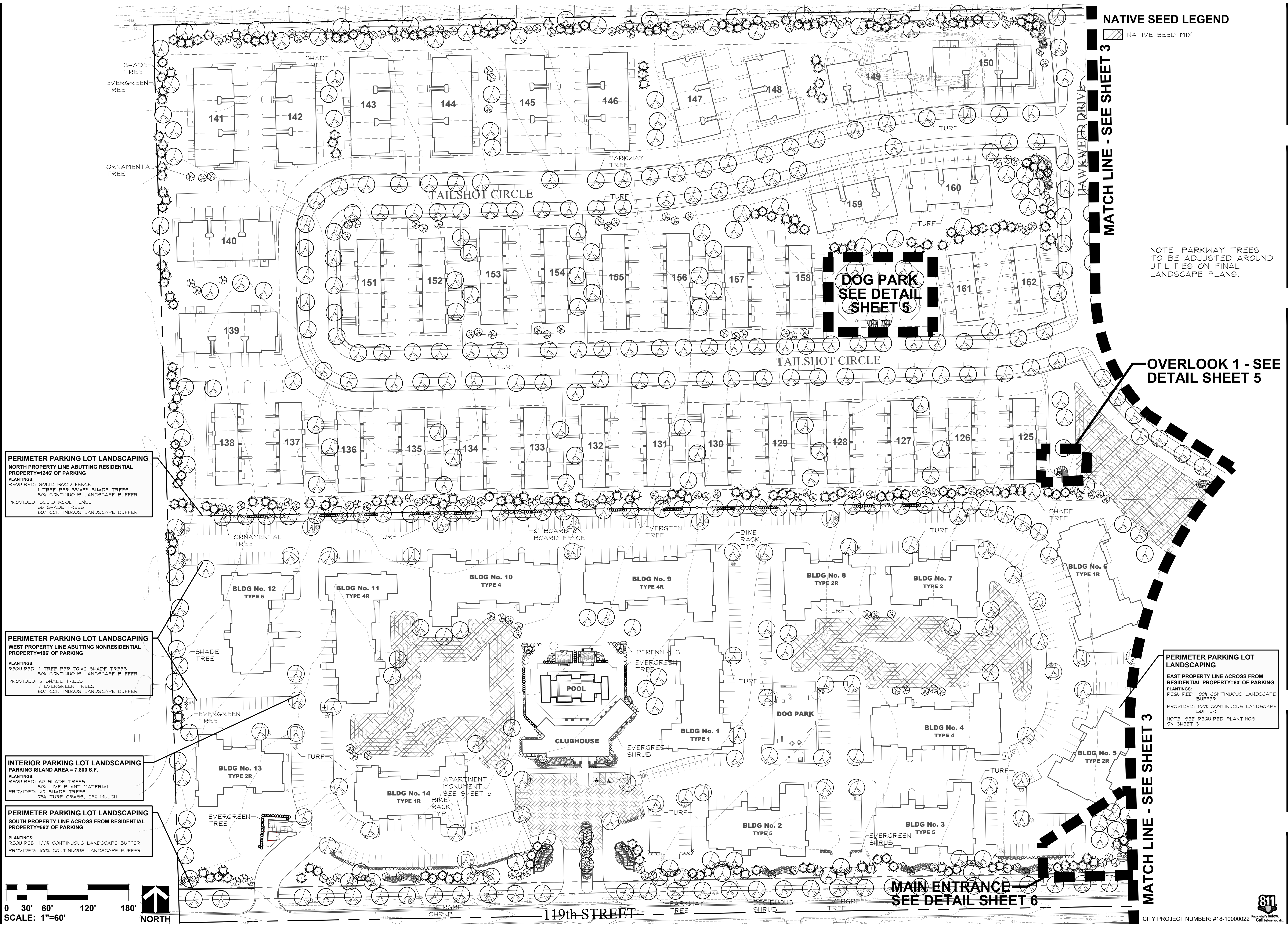
REVISIONS	DATE
3	7.06.18
2	6.04.18
1	5.15.18

DATE 3.26.18  
PROJECT NO. DR1705  
DRAWN MGM  
CHECKED JCT  
SHEET NO.

**NATIVE SEED LEGEND**

☒ NATIVE SEED MIX

NOTE: PARKWAY TREES TO BE ADJUSTED AROUND UTILITIES ON FINAL LANDSCAPE PLANS.



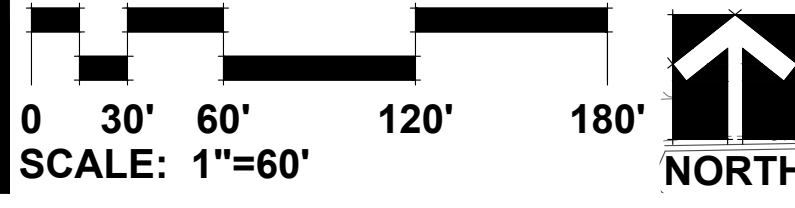
**PERIMETER PARKING LOT LANDSCAPING**  
NORTH PROPERTY LINE ABUTTING RESIDENTIAL PROPERTY=1246' OF PARKING  
PLANTINGS:  
REQUIRED: SOLID WOOD FENCE  
1 TREE PER 35'-35' SHADE TREES  
50% CONTINUOUS LANDSCAPE BUFFER  
PROVIDED: SOLID WOOD FENCE  
35 SHADE TREES  
50% CONTINUOUS LANDSCAPE BUFFER

**PERIMETER PARKING LOT LANDSCAPING**  
WEST PROPERTY LINE ABUTTING NONRESIDENTIAL PROPERTY=106' OF PARKING  
PLANTINGS:  
REQUIRED: 1 TREE PER 70'+2 SHADE TREES  
50% CONTINUOUS LANDSCAPE BUFFER  
PROVIDED: 2 SHADE TREES  
7 EVERGREEN TREES  
50% CONTINUOUS LANDSCAPE BUFFER

**INTERIOR PARKING LOT LANDSCAPING**  
PARKING ISLAND AREA = 7,800 S.F.  
PLANTINGS:  
REQUIRED: 60 SHADE TREES  
50% LIVE PLANT MATERIAL  
PROVIDED: 60 SHADE TREES  
75% TURF GRASS, 25% MULCH

**PERIMETER PARKING LOT LANDSCAPING**  
SOUTH PROPERTY LINE ACROSS FROM RESIDENTIAL PROPERTY=562' OF PARKING  
PLANTINGS:  
REQUIRED: 100% CONTINUOUS LANDSCAPE BUFFER  
PROVIDED: 100% CONTINUOUS LANDSCAPE BUFFER

**PERIMETER PARKING LOT LANDSCAPING**  
EAST PROPERTY LINE ACROSS FROM RESIDENTIAL PROPERTY=60' OF PARKING  
PLANTINGS:  
REQUIRED: 100% CONTINUOUS LANDSCAPE BUFFER  
PROVIDED: 100% CONTINUOUS LANDSCAPE BUFFER  
NOTE: SEE REQUIRED PLANTINGS ON SHEET 3



MATCH LINE - SEE SHEET 3

MATCH LINE - SEE SHEET 3

MAIN ENTRANCE - SEE DETAIL SHEET 6

DOG PARK - SEE DETAIL SHEET 5

OVERLOOK 1 - SEE DETAIL SHEET 5

**NATIVE SEED LEGEND**

☒ NATIVE SEED MIX

MATCH LINE - SEE SHEET 2

MATCH LINE - SEE SHEET 4

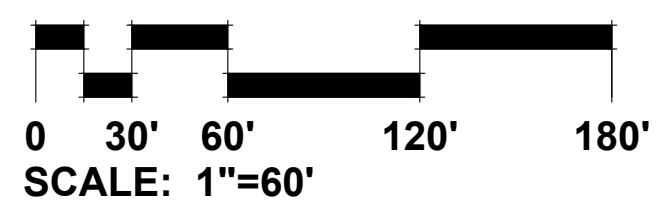
MATCH LINE - SEE SHEET 2

MATCH LINE - SEE SHEET 4

OVERLOOK 2 - SEE  
DETAIL SHEET 5

MAIN ENTRANCE  
SEE DETAIL SHEET 6

NOTE: PARKWAY TREES TO BE  
ADJUSTED AROUND UTILITIES ON  
FINAL LANDSCAPE PLANS.



GARY R. WEBER  
ASSOCIATES, INC.  
LAND PLANNING  
ECOLOGICAL CONSULTING  
LANDSCAPE ARCHITECTURE  
212 SOUTH MAIN STREET  
WHEATON, ILLINOIS 60187  
PHONE: 630-668-7197

CLIENTS  
**D.R. HORTON**  
*America's Builder*  
750 E. BUNKER COURT, SUITE 500  
VERNON HILLS, IL 60061  
**OCULUS DEVELOPMENT**  
1202 W. MONROE STREET  
CHICAGO, IL 60607  
ENGINEER:  
**CEMCON, LTD.**  
2280 WHITE OAK CIR, SUITE 100  
AURORA, ILLINOIS 60502

**POLO CLUB**  
NAPERVILLE, ILLINOIS  
**PRELIMINARY LANDSCAPE PLAN**

NO.	DATE	DESCRIPTION
3	7.06.18	
2	6.04.18	
1	5.15.18	

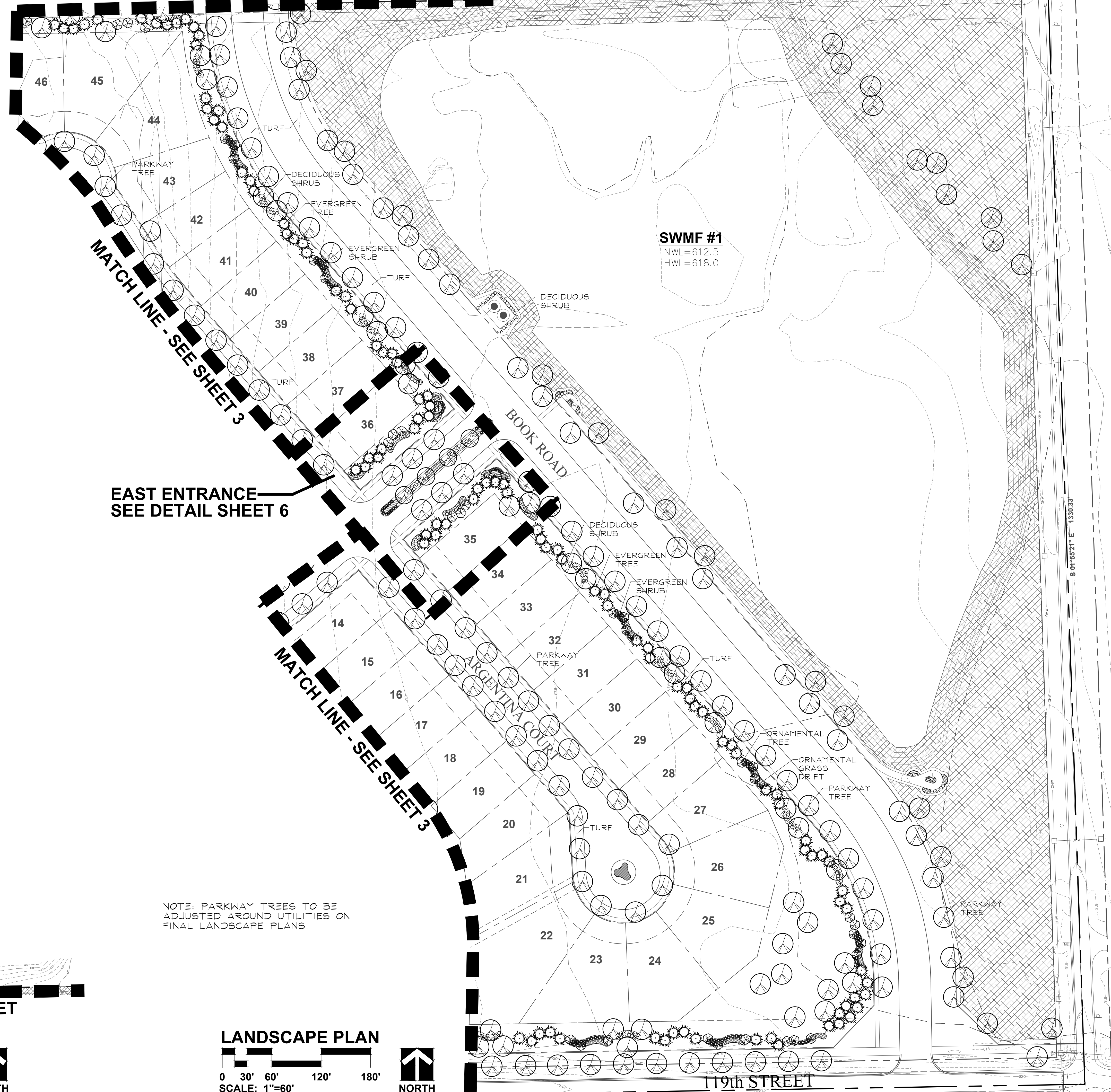
DATE 3.26.18  
PROJECT NO. DR1705  
DRAWN MGM  
CHECKED JCT  
SHEET NO.

**3 OF 8**

**NATIVE SEED LEGEND**

☒ NATIVE SEED MIX

**BOOK ROAD EXTENSION- SEE DETAIL THIS SHEET**



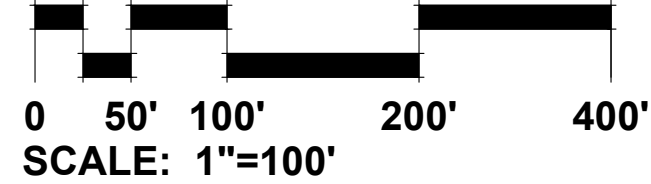
**SWMF #1**  
 NWL=612.5  
 HWL=618.0

**EAST ENTRANCE**  
 SEE DETAIL SHEET 6

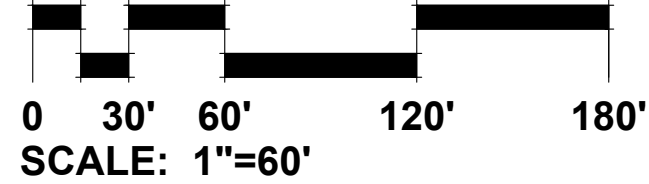
NOTE: PARKWAY TREES TO BE ADJUSTED AROUND UTILITIES ON FINAL LANDSCAPE PLANS.

**SEE DETAIL THIS SHEET**

**BOOK ROAD EXTENSION**



**LANDSCAPE PLAN**



**GARY R. WEBER ASSOCIATES, INC.**  
 LAND PLANNING  
 ECOLOGICAL CONSULTING  
 LANDSCAPE ARCHITECTURE  
 212 SOUTH MAIN STREET  
 WHEATON, ILLINOIS 60187  
 PHONE: 630-668-7197

CLIENTS  
**D.R. HORTON**  
*America's Builder*  
 750 E. BUNKER COURT, SUITE 500  
 VERNON HILLS, IL 60061  
**OCULUS DEVELOPMENT**  
 1202 W. MONROE STREET  
 CHICAGO, IL 60607  
 ENGINEER  
**CEMCON, LTD.**  
 2280 WHITE OAK CIR. SUITE 100  
 AURORA, ILLINOIS 60502

**POLO CLUB**  
 NAPERVILLE, ILLINOIS  
**PRELIMINARY LANDSCAPE PLAN**

REVISIONS	DATE
3	7.06.18
2	6.04.18
1	5.15.18

DATE	3.26.18
PROJECT NO.	DR1705
DRAWN	MGM
CHECKED	JCT
SHEET NO.	

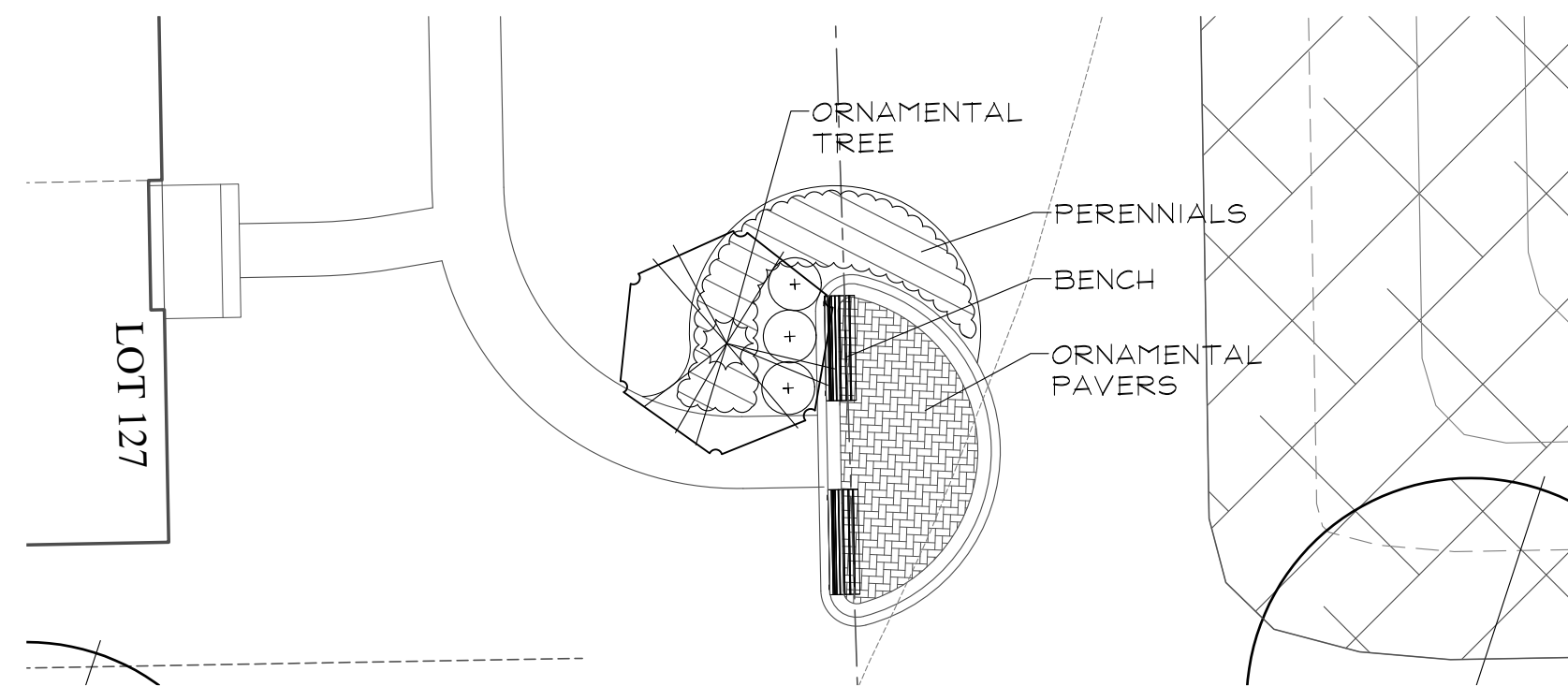
**4 OF 8**



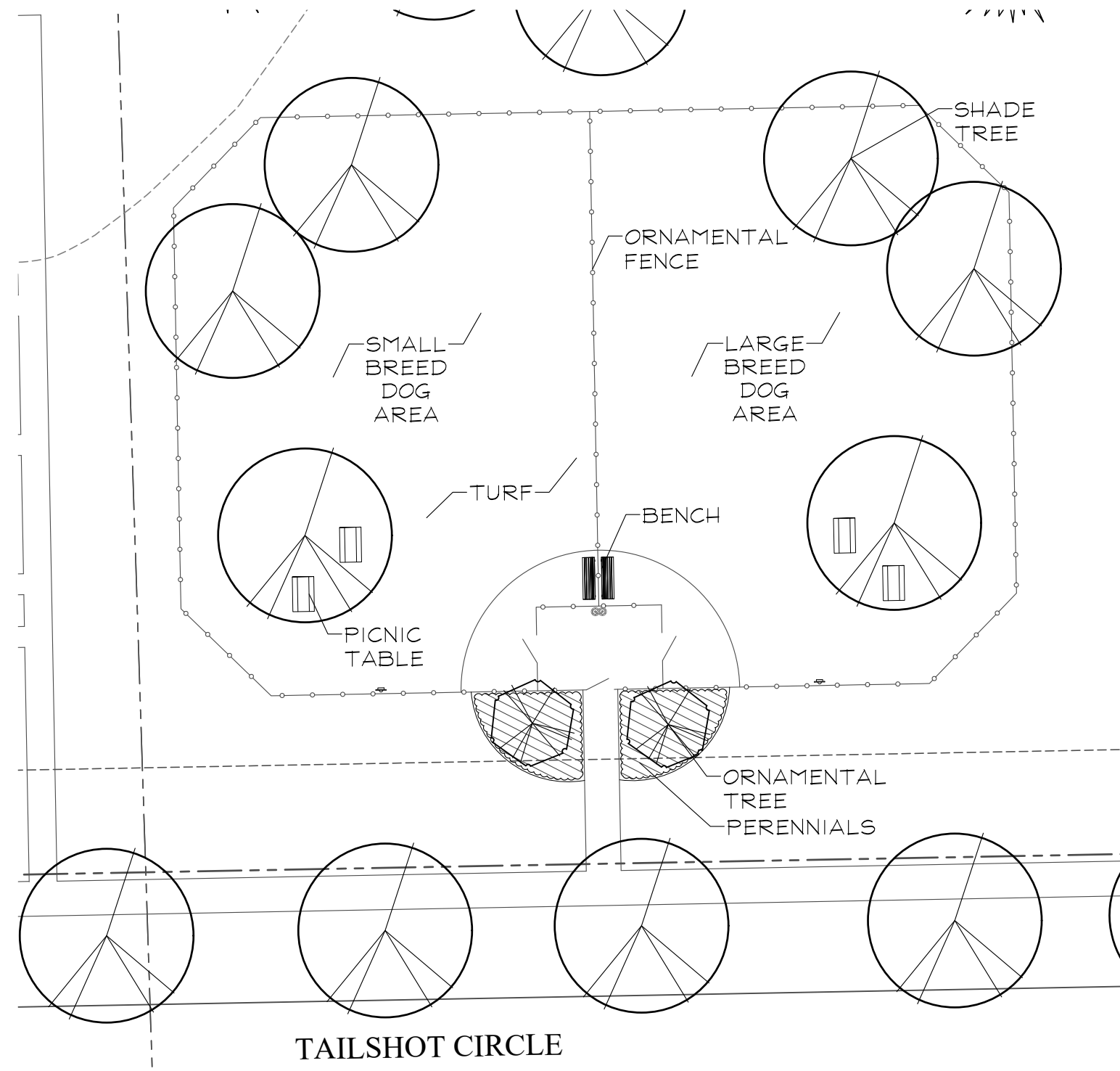
GARY R. WEBER ASSOCIATES, INC.  
 LAND PLANNING  
 ECOLOGICAL CONSULTING  
 LANDSCAPE ARCHITECTURE  
 212 SOUTH MAIN STREET  
 WHEATON, ILLINOIS 60187  
 PHONE: 630-668-7197

CLIENTS  
**D.R. HORTON**  
*America's Builder*  
 750 E. BUNKER COURT, SUITE 500  
 VERNON HILLS, IL 60061  
**OCULUS DEVELOPMENT**  
 1202 W. MONROE STREET  
 CHICAGO, IL 60607  
 ENGINEER  
**CEMCON, LTD.**  
 2280 WHITE OAK CIR, SUITE 100  
 AURORA, ILLINOIS 60502

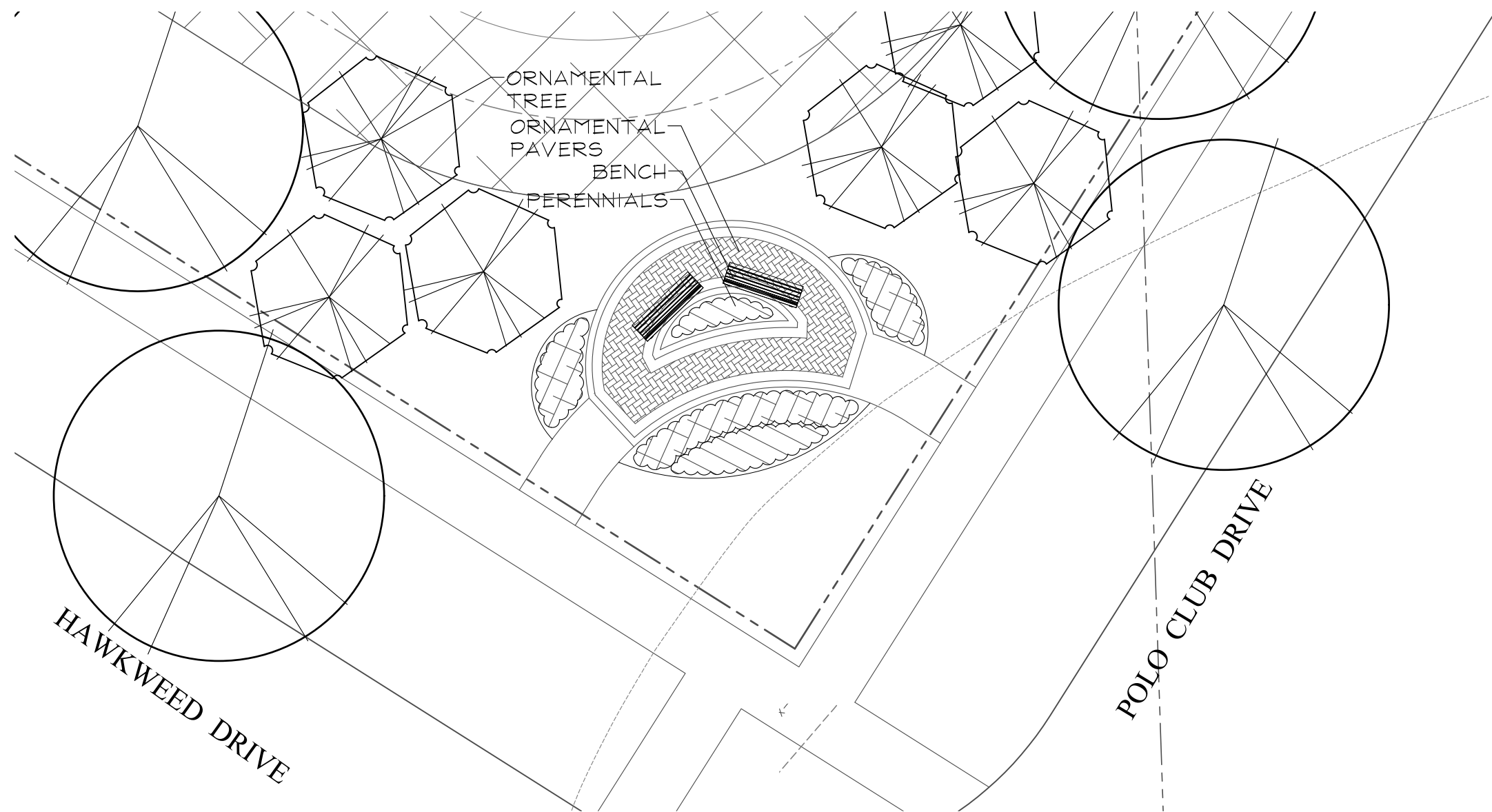
**POLO CLUB**  
 NAPERVILLE, ILLINOIS  
**LANDSCAPE DETAILS**



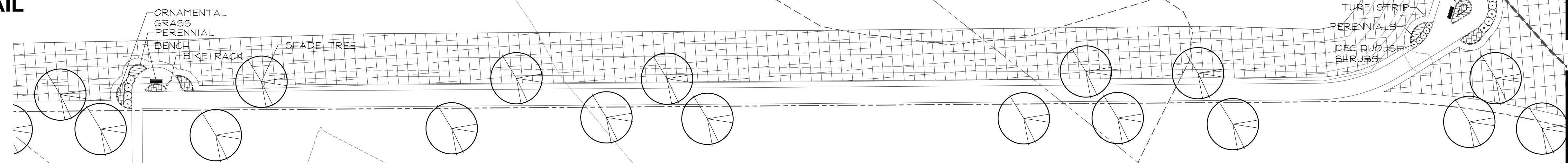
**OVERLOOK 1 LANDSCAPE DETAIL**  
 SCALE: 1"=10'



**DOG PARK LANDSCAPE DETAIL**  
 SCALE: 1"=20'



**OVERLOOK 2 LANDSCAPE DETAIL**  
 SCALE: 1"=10'



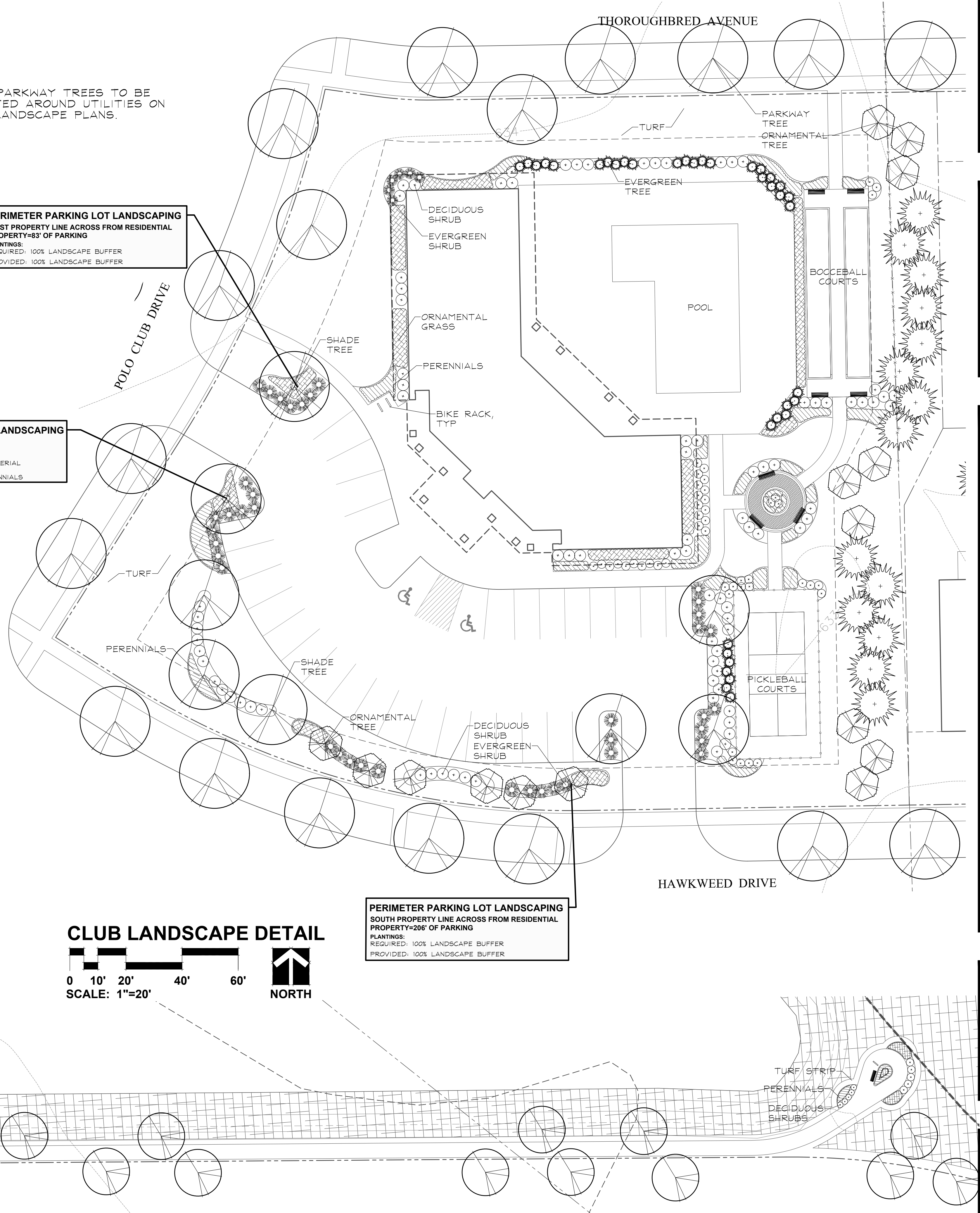
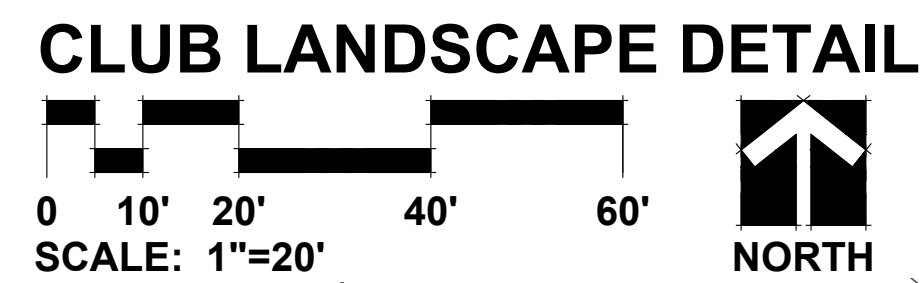
**BIKE TRACK AMENITY**  
 SCALE: 1"=30'

NOTE: PARKWAY TREES TO BE ADJUSTED AROUND UTILITIES ON FINAL LANDSCAPE PLANS.

**PERIMETER PARKING LOT LANDSCAPING**  
 WEST PROPERTY LINE ACROSS FROM RESIDENTIAL PROPERTY=83' OF PARKING  
 PLANTINGS:  
 REQUIRED: 100% LANDSCAPE BUFFER  
 PROVIDED: 100% LANDSCAPE BUFFER

**INTERIOR PARKING LOT LANDSCAPING**  
 PARKING ISLAND AREA = 650 S.F.  
 PLANTINGS:  
 REQUIRED: 5 SHADE TREES  
 50% LIVE PLANT MATERIAL  
 PROVIDED: 5 SHADE TREES  
 100% SHRUBS & PERENNIALS

**PERIMETER PARKING LOT LANDSCAPING**  
 SOUTH PROPERTY LINE ACROSS FROM RESIDENTIAL PROPERTY=206' OF PARKING  
 PLANTINGS:  
 REQUIRED: 100% LANDSCAPE BUFFER  
 PROVIDED: 100% LANDSCAPE BUFFER



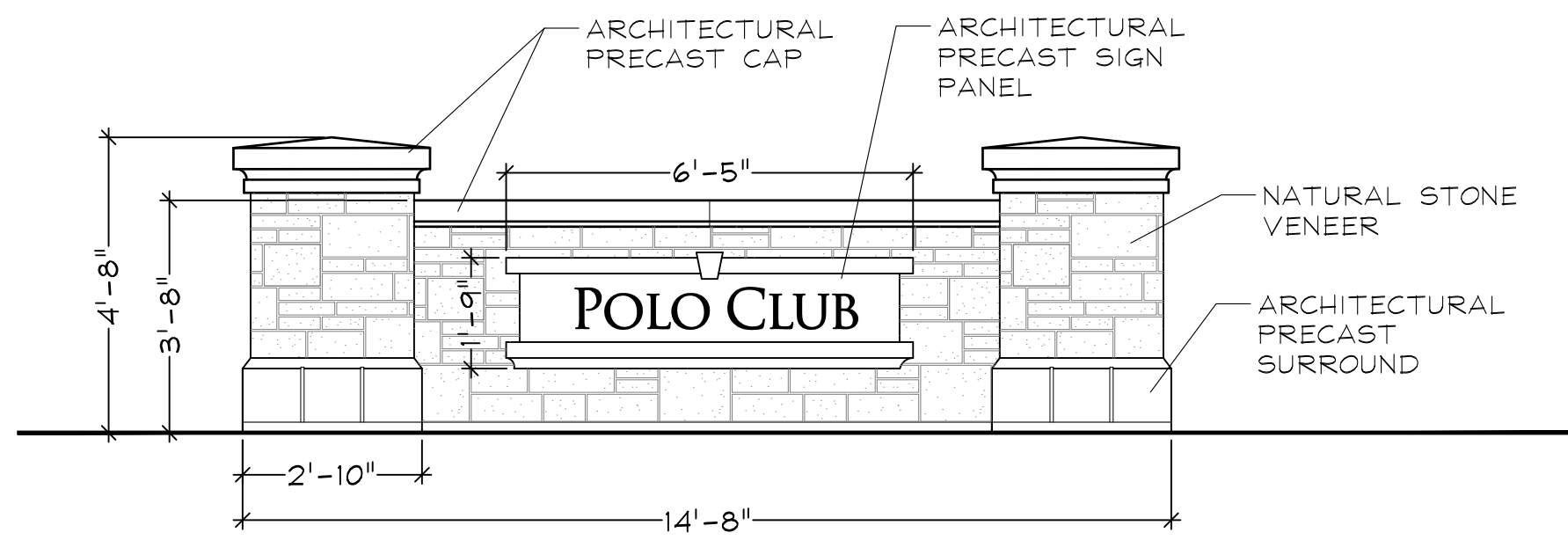
REVISIONS	DATE
3	7.06.18
2	6.04.18
1	5.15.18

DATE	3.26.18
PROJECT NO.	DR1705
DRAWN	MGM
CHECKED	JCT
SHEET NO.	

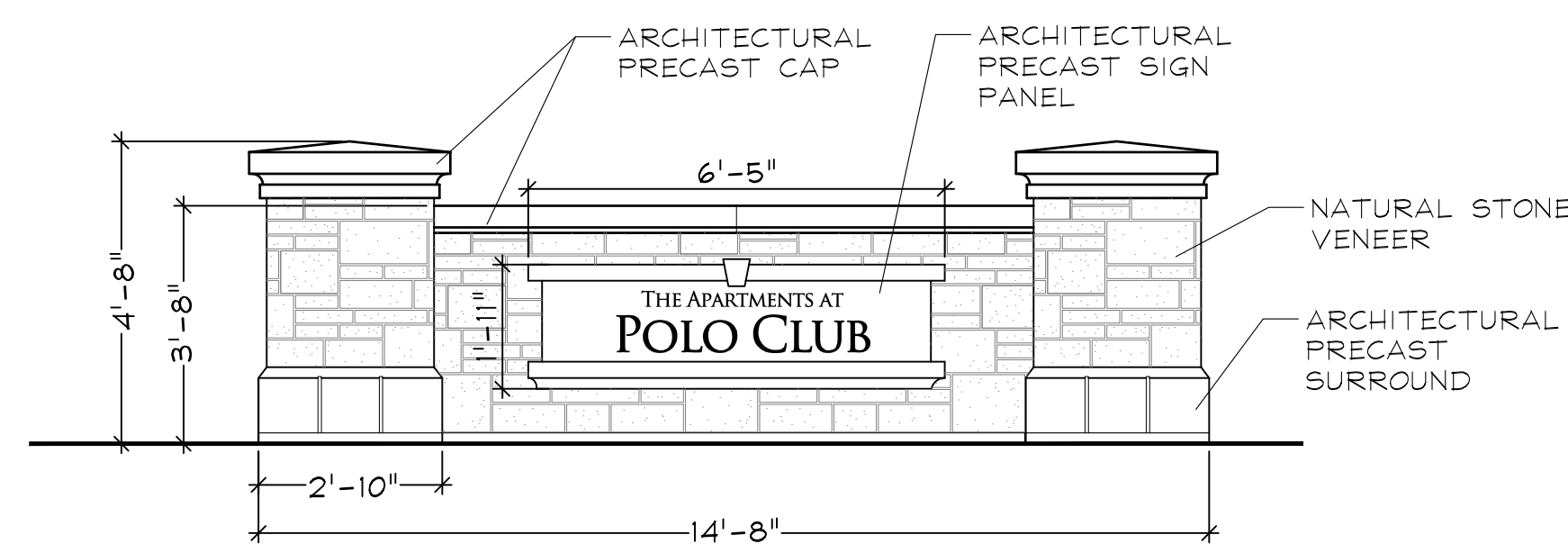


GARY R. WEBER  
ASSOCIATES, INC.  
LAND PLANNING  
ECOLOGICAL CONSULTING  
LANDSCAPE ARCHITECTURE  
212 SOUTH MAIN STREET  
WHEATON, ILLINOIS 60187  
PHONE: 630-668-7197

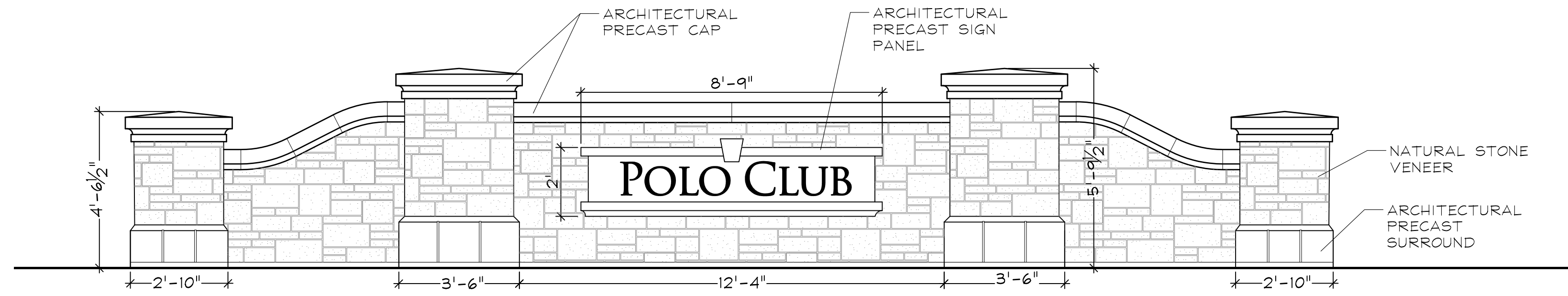
CLIENTS  
**D-R-HORTON**  
*America's Builder*  
750 E. BUNKER COURT, SUITE 500  
VERNON HILLS, IL 60061  
**OCULUS DEVELOPMENT**  
1202 W. MONROE STREET  
CHICAGO, IL 60607  
ENGINEER:  
**CEMCON, LTD.**  
2280 WHITE OAK CIR, SUITE 100  
AURORA, ILLINOIS 60502



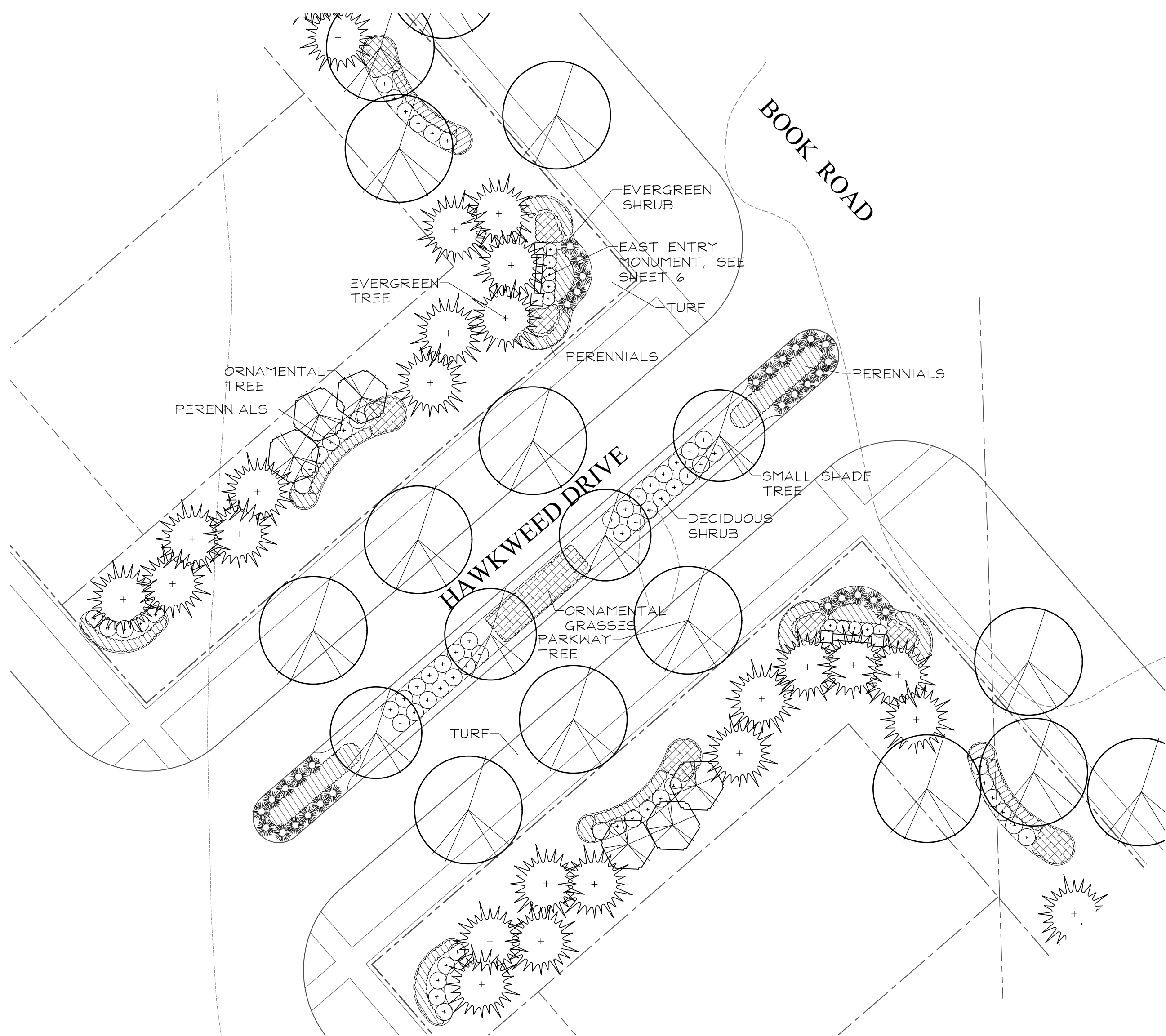
**EAST ENTRY MONUMENT ELEVATION**  
SCALE: 3/8"=1'



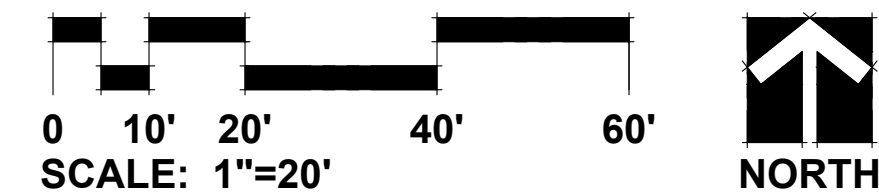
**APARTMENT MONUMENT ELEVATION**  
SCALE: 3/8"=1'



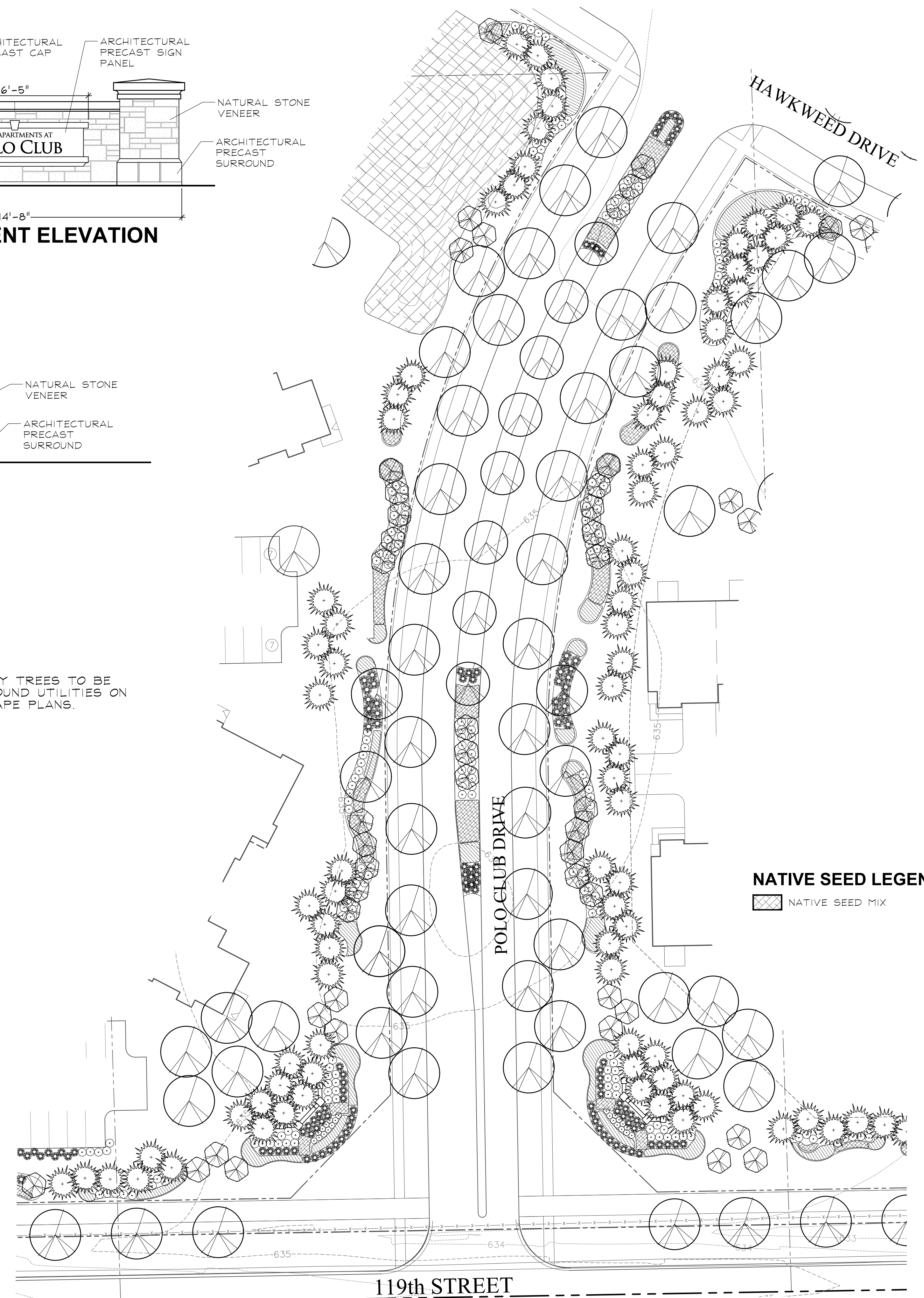
**MAIN ENTRY MONUMENT ELEVATION**  
SCALE: 3/8"=1'



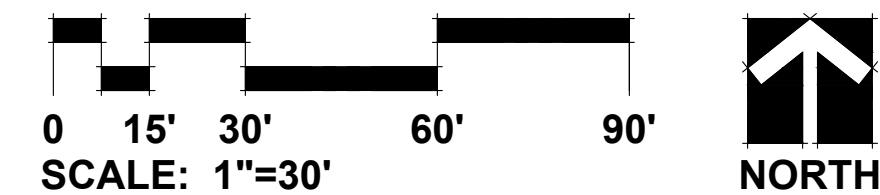
**EAST ENTRANCE LANDSCAPE DETAIL**



NOTE: PARKWAY TREES TO BE ADJUSTED AROUND UTILITIES ON FINAL LANDSCAPE PLANS.



**MAIN ENTRANCE LANDSCAPE DETAIL**



**POLO CLUB**  
NAPERVILLE, ILLINOIS  
**LANDSCAPE DETAILS**

REVISIONS	DATE
3	7.06.18
2	6.04.18
1	5.15.18

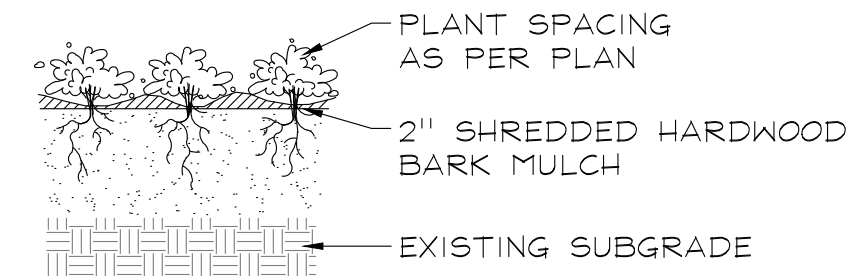
DATE	3.26.18
PROJECT NO.	DR1705
DRAWN	MGM
CHECKED	JCT
SHEET NO.	

**6 OF 8**

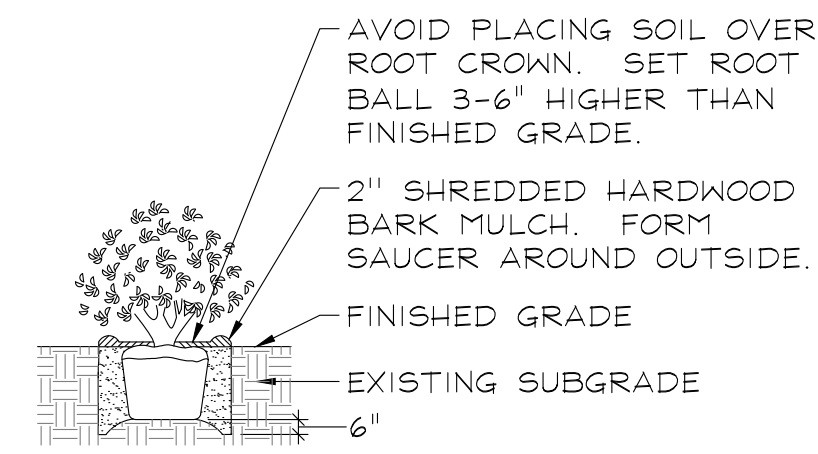
CITY PROJECT NUMBER: #18-1000022



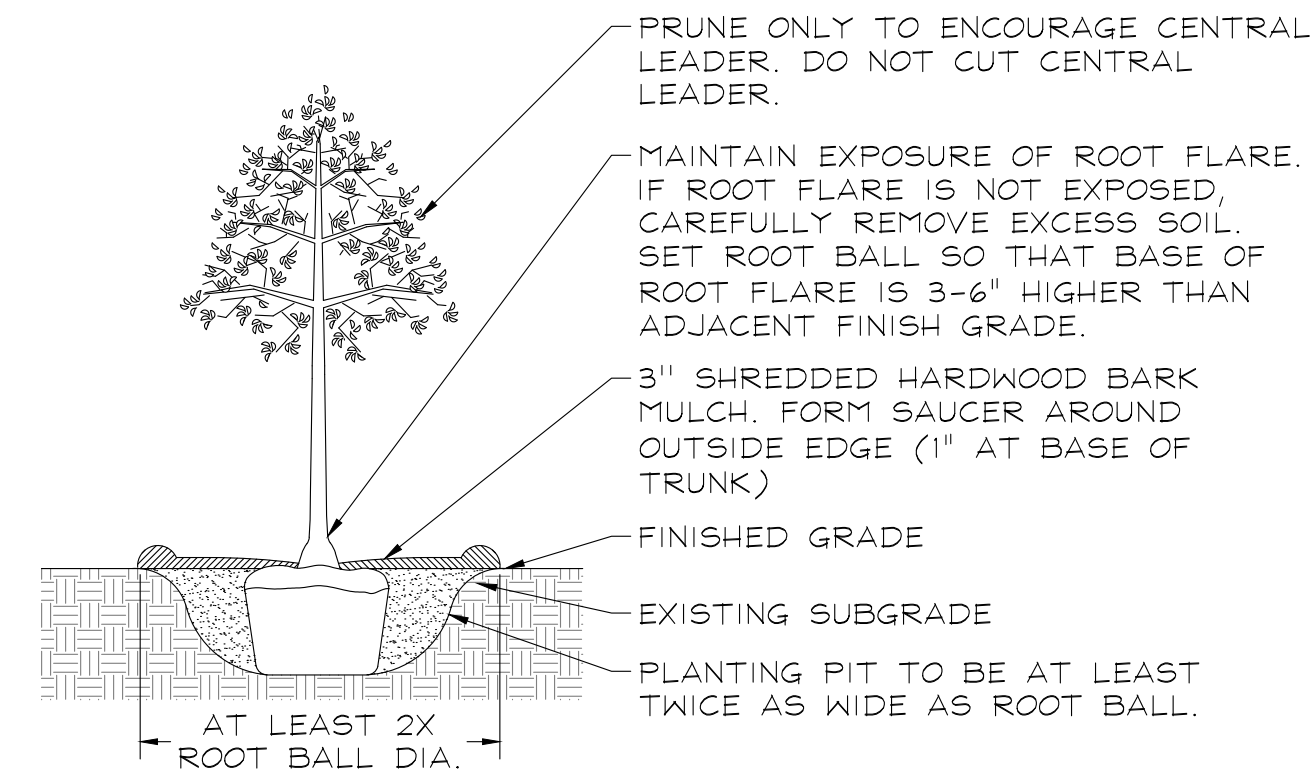
## PLANTING DETAILS



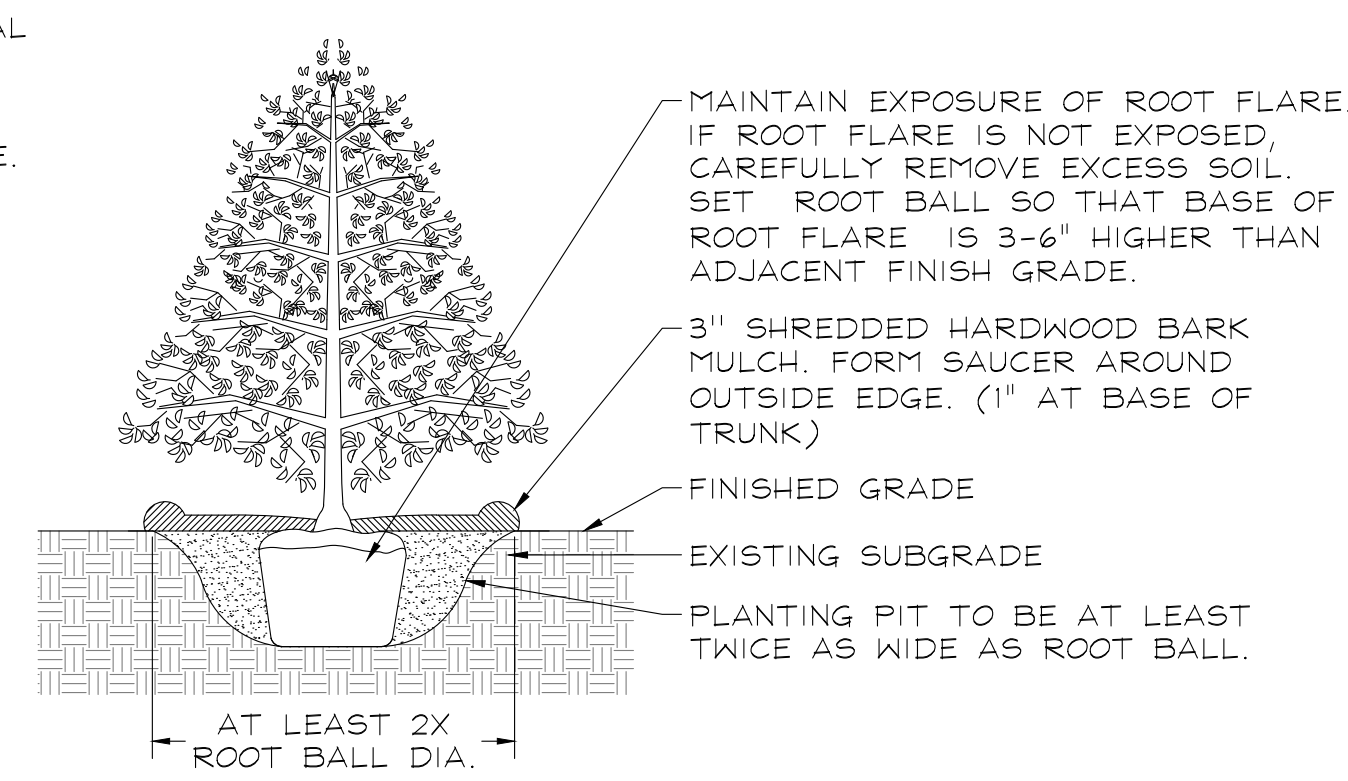
### PERENNIALS AND GROUNDCOVERS NOT TO SCALE



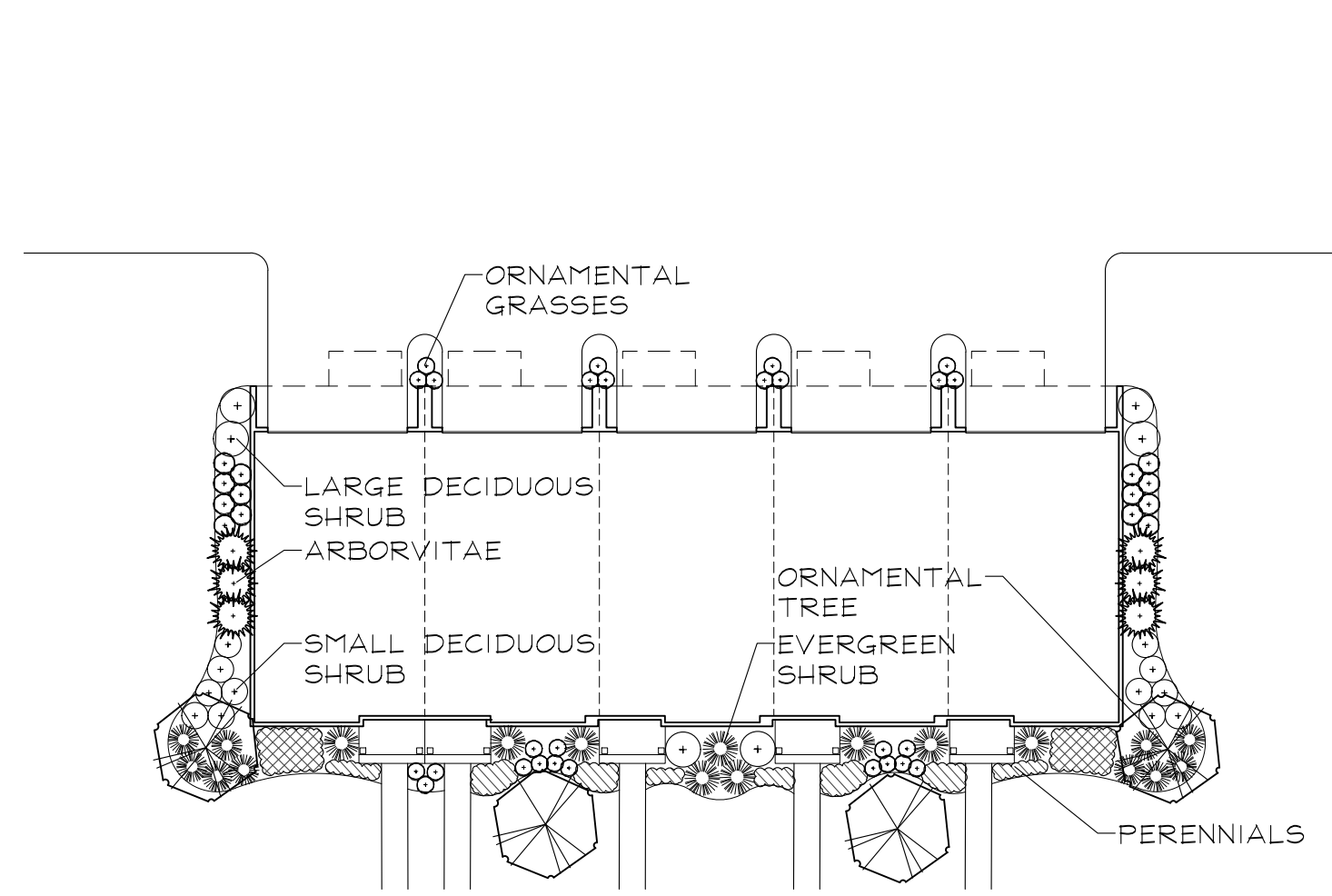
### DECIDUOUS AND EVERGREEN SHRUBS NOT TO SCALE



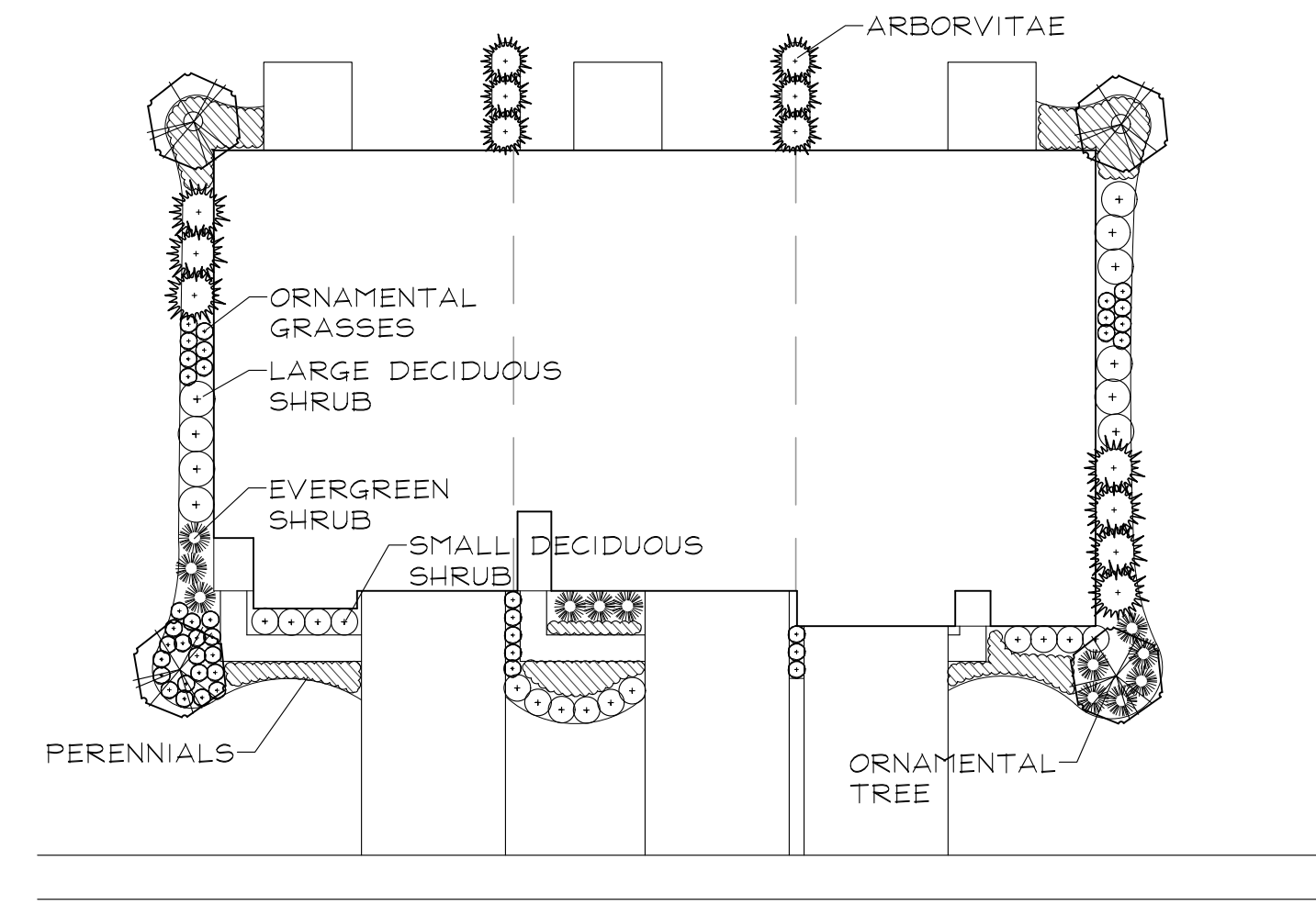
### DECIDUOUS TREES NOT TO SCALE



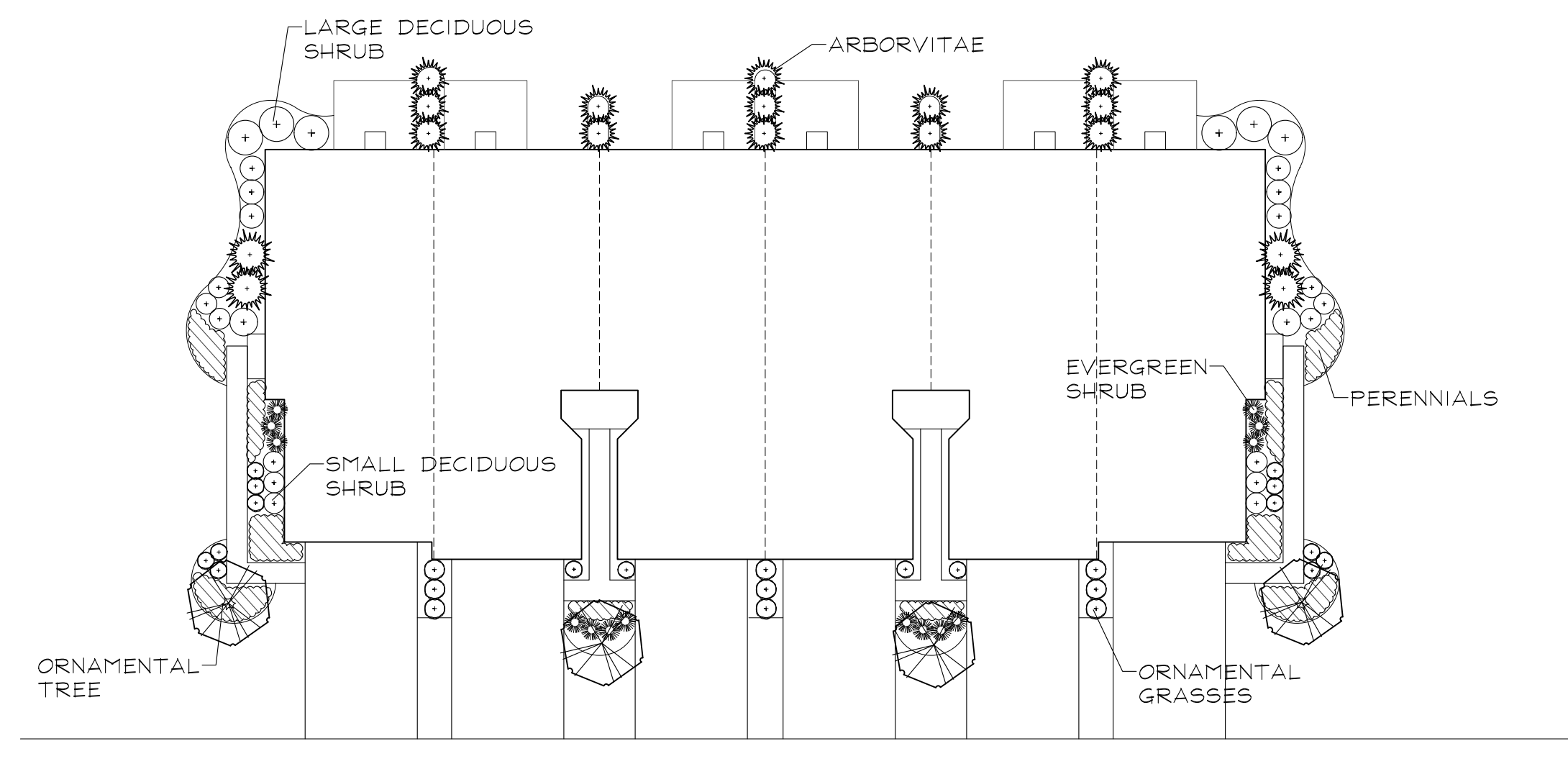
### EVERGREEN TREES NOT TO SCALE



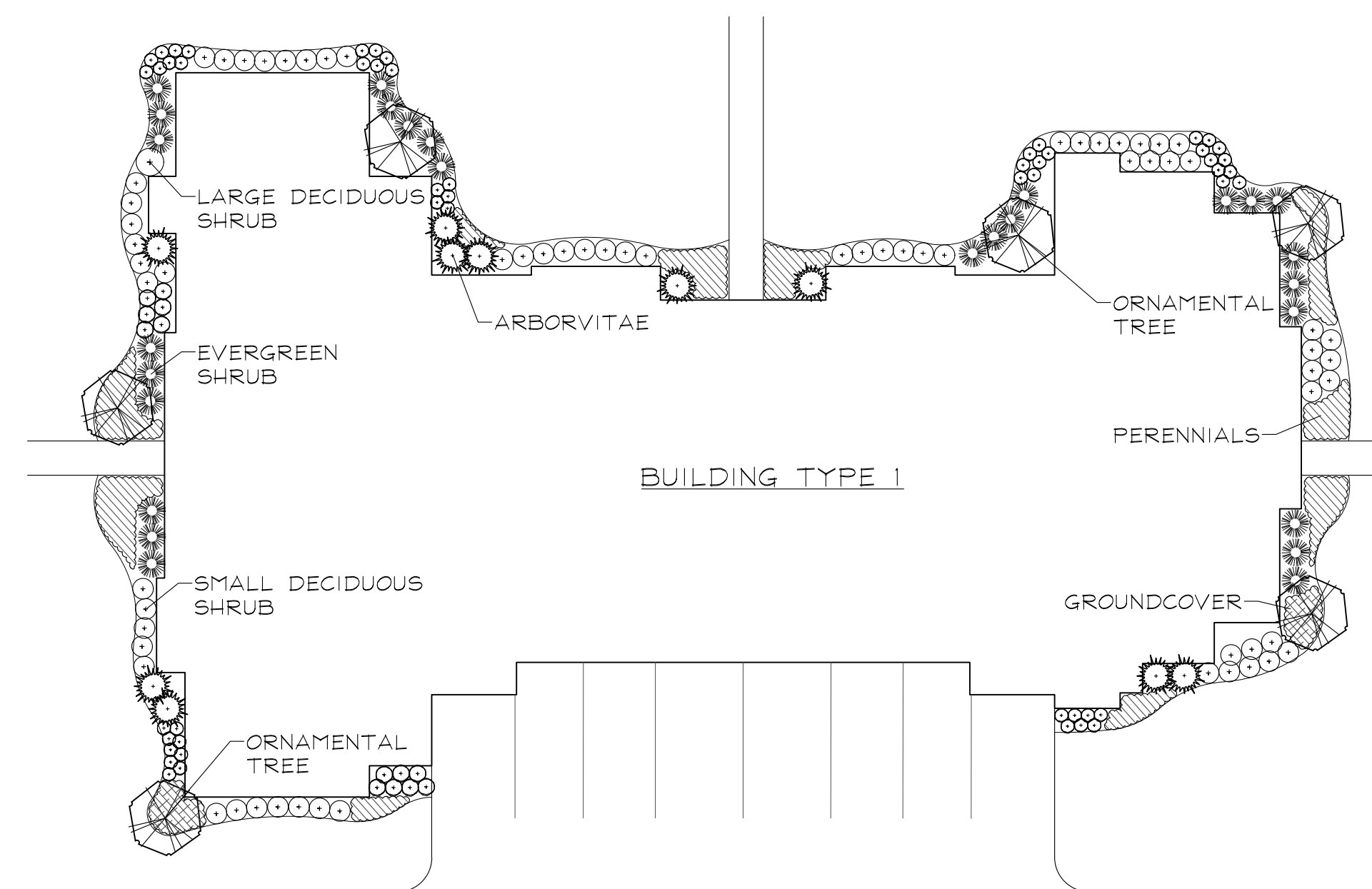
**TYPICAL SEABOARD TOWNHOME FOUNDATION LANDSCAPE PLAN**  
SCALE: 1"=20'



**TYPICAL AGE-TARGETED TOWNHOME FOUNDATION LANDSCAPE PLAN**  
SCALE: 1"=20'



**TYPICAL BUCKINGHAM TOWNHOME FOUNDATION LANDSCAPE PLAN**  
SCALE: 1"=20'



**TYPICAL APARTMENT FOUNDATION LANDSCAPE PLAN**  
SCALE: 1"=20'

## FOUNDATION PLAN REPRESENTATIVE PLANT LIST

Key	Botanical/Common Name	Size	Remarks
	<b>ORNAMENTAL TREES</b>		
	<i>Amelanchier grandiflora</i> APPLE SERVICEBERRY	6' Tall	Multi-Stem
	<i>Cornus mas</i> CORNELIANCHERRY DOGWOOD	6' Tall	Multi-Stem
	<i>Magnolia stellata</i> 'Royal Star' ROYAL STAR MAGNOLIA	6' Tall	Multi-Stem
	<i>Syringa pectinensis</i> 'Morton' CHINA SNOW PEKING LILAC	6' Tall	Multi-Stem
	<b>DECIDUOUS SHRUBS</b>		
	<i>Hydrangea macrophylla</i> 'Bailmer' ENDLESS SUMMER HYDRANGEA	24" Wide	3' O.C.
	<i>Rhus aromatica</i> 'Gro-low' GRO-LOW FRAGRANT SUMAC	24" Wide	3' O.C.
	<i>Spiraea betulifolia</i> 'Tor' BIRCHLEAF SPIREA	24" Tall	3' O.C.
	<i>Spiraea nipponica</i> 'Snowmound' SNOWMOUND SPIREA	30" Wide	4' O.C.
	<i>Syringa patula</i> 'Miss Kim' MISS KIM LILAC	30" Tall	4' O.C.
	<i>Viburnum x juddii</i> JUDD VIBURNUM	36" Tall	4' O.C.
	<i>Viburnum trilobum</i> 'Redwing' Highbush CRANBERRY VIBURNUM	36" Tall	4' O.C.
	<i>Weigela florida</i> 'Verweil-4' SONIC BOOM RED WEIGELA	24" Tall	4' O.C.
	<b>EVERGREEN SHRUBS</b>		
<i>Juniperus chinensis</i> var. <i>sargentii</i> 'Glauca' BLUE SARGENT JUNIPER	24" Wide 6" Tall	4' O.C.	
<i>Taxus x media</i> 'Densiflora' DENSE YEW	24" Wide	3' O.C.	
<i>Thuja occidentalis</i> 'Smaragd' EMERALD GREEN ARBORVITAE	4' Tall	3' O.C.	
	<b>ORNAMENTAL GRASSES &amp; PERENNIALS</b>		
	<i>Calamagrostis x acutiflora</i> 'Overdam' WHITE FEATHER REED GRASS	#1	30" O.C.
	<i>Coreopsis</i> 'Jethro Tull' JETHRO TULL COREOPSIS	#1	18" O.C.
	<i>Echinacea purpurea</i> PURPLE CONEFLOWER	#1	18" O.C.
	<i>Hemerocallis</i> 'Pardon Me' PARDON ME DAYLILY	#1	18" O.C.
	<i>Hosta</i> 'Patriot' PATRIOT HOSTA	#1	24" O.C.
	<i>Pennisetum alopecuroides</i> 'Hamelin' DWARF FOUNTAIN GRASS	#1	24" O.C.
	<b>GROUNDCOVERS</b>		
	<i>Geranium sanguineum</i> var. <i>striatum</i> STRIATUM BLOODY CRANESBILL	#SP4	12" O.C.
	<i>Vinca minor</i> 'Dart's Blue' DART'S BLUE PERIWINKLE	#SP4	12" O.C.

**GRWA**  
GARY R. WEBER  
ASSOCIATES, INC.  
LAND PLANNING  
ECOLOGICAL CONSULTING  
LANDSCAPE ARCHITECTURE  
212 SOUTH MAIN STREET  
WHEATON, ILLINOIS 60187  
PHONE: 630-668-7197

CLIENTS  
**D.R. HORTON**  
*America's Builder*  
750 E. BUNKER COURT, SUITE 500  
VERNON HILLS, IL 60061  
**OCULUS DEVELOPMENT**  
1202 W. MONROE STREET  
CHICAGO, IL 60607  
ENGINEER  
**CEMCON, LTD.**  
2280 WHITE OAK CIR, SUITE 100  
AURORA, ILLINOIS 60502

**POLO CLUB**  
NAPERVILLE, ILLINOIS  
**TYPICAL FOUNDATION LANDSCAPE PLANS**

REVISIONS	DATE	BY
3	7.06.18	
2	6.04.18	
1	5.15.18	

DATE 3.26.18  
PROJECT NO. DR1705  
DRAWN MGM  
CHECKED JCT  
SHEET NO.

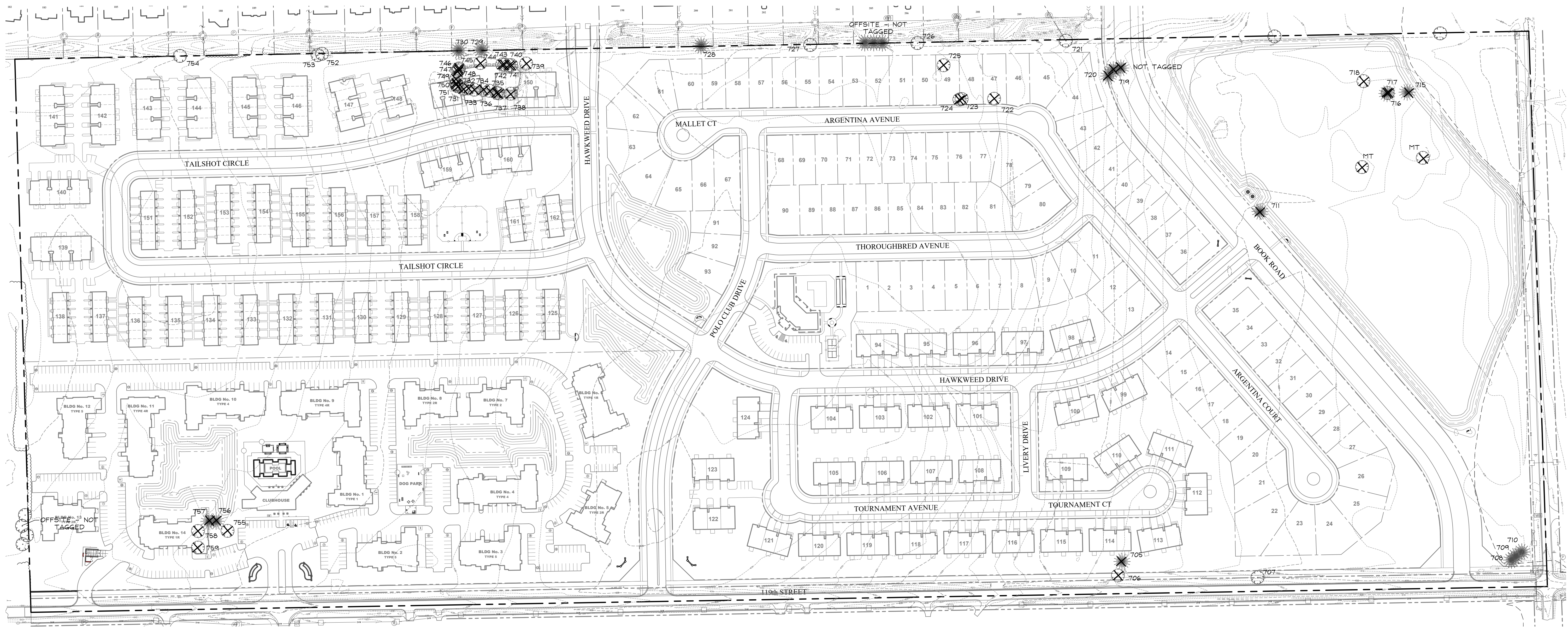




GARY R. WEBER  
ASSOCIATES, INC.  
LAND PLANNING  
ECOLOGICAL CONSULTING  
LANDSCAPE ARCHITECTURE  
212 SOUTH MAIN STREET  
WHEATON, ILLINOIS 60187  
PHONE: 630-668-7197

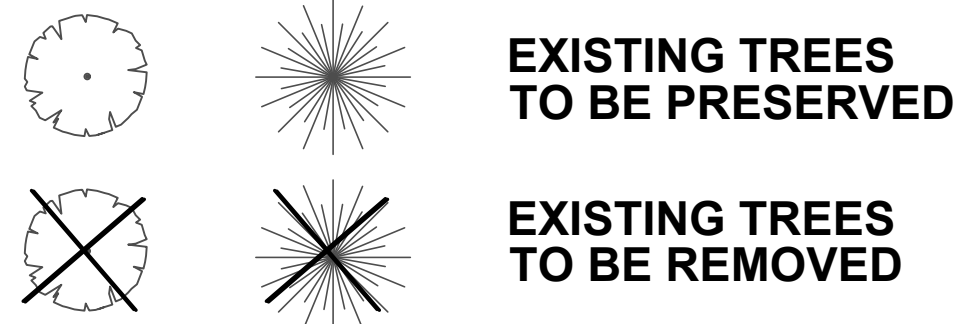
CLIENTS  
**D-R-HORTON**  
*America's Builder*  
750 E. BUNKER COURT, SUITE 500  
VERNON HILLS, IL 60061  
**OCULUS DEVELOPMENT**  
1202 W. MONROE STREET  
CHICAGO, IL 60607  
ENGINEER: **CEMCON, LTD.**  
2280 WHITE OAK CIR, SUITE 100  
AURORA, ILLINOIS 60502

**POLO CLUB**  
NAPERVILLE, ILLINOIS  
**TREE PRESERVATION PLAN**



**LEGEND**

DECIDUOUS EVERGREEN



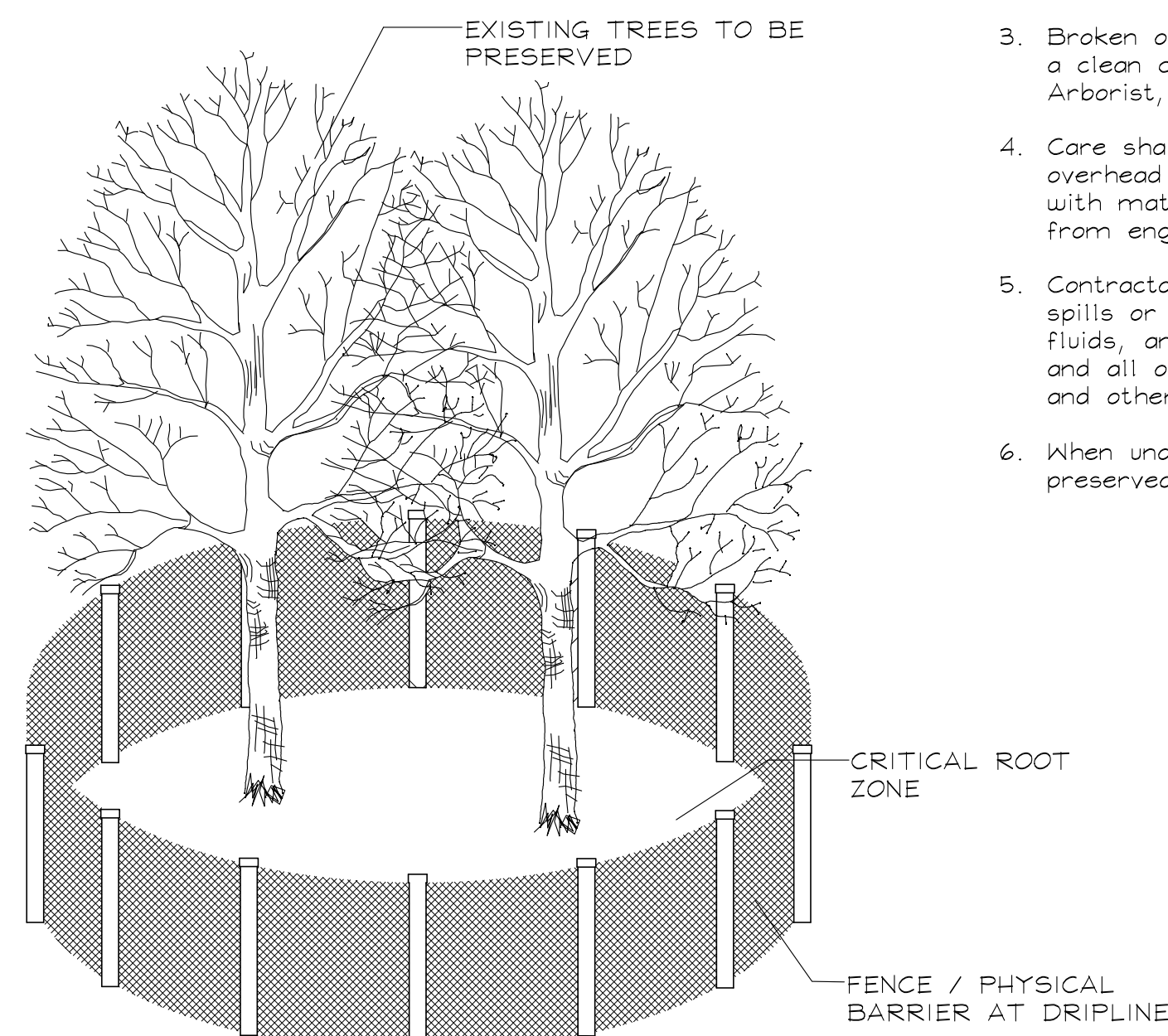
**TREE PRESERVATION NOTES**

- 48" high snow fence or wood barriers shall extend to the dripline of the tree or tree mass whenever possible, shall be installed before construction begins, and should not be removed until the completion of construction.
- All accidental damage to existing trees that are to be preserved shall be promptly treated as required in accordance with recognized horticultural practices and the instructions of the professional Arborist, Landscape Architect or Horticulturist.
- Broken or badly bruised branches shall be removed with a clean cut, if recommended by the professional Arborist, Landscape Architect or Horticulturist.
- Care shall be exercised by the contractors to protect all overhead limbs and branches from damage by contact with material, machinery or equipment and by damage from engine exhaust.
- Contractors shall protect trees and vegetation against spills or discharge of fuels, lubricating oils, hydraulic fluids, anti-freeze and coolants, calcium chloride, lime and all other similar hydrocarbons, organic chemicals, and other materials which can be harmful.
- When underground utilities are proposed within 5' of a preserved tree trunk, they must be augered if possible.

**TREE INVENTORY**

TAG NO.	BOTANICAL NAME	COMMON NAME	SIZE	HEALTH/STRUCTURE	PROPOSED ACTION
705	<i>Picea abies</i>	Norway Spruce	8"	Good	Remove
706	<i>Acer rubra</i>	Red Maple	10"	Good	Remove
707	<i>Morus rubra</i>	Mulberry	14"	Poor; Missing/Dead Limbs	Preserve
708	<i>Picea abies</i>	Norway Spruce	10"	Fair; Crowded	Preserve
709	<i>Picea abies</i>	Norway Spruce	7"	Fair; Crowded	Preserve
710	<i>Picea abies</i>	Norway Spruce	14"	Fair; Crowded	Preserve
711	<i>Pinus nigra</i>	Austrian Pine	10"	Poor; Leaning	Remove
712	<i>Malus</i>	Apple/Crab	12"	Poor; Missing/Dead Limbs	Remove
713	<i>Pinus nigra</i>	Austrian Pine	6"	Poor; Crowded	Remove
714	<i>Salix nigra</i>	Black Willow	14", 10", 12"	Poor; Missing/Dead Limbs	Remove
715	<i>Pinus nigra</i>	Austrian Pine	10"	Poor; Missing/Dead Limbs	Remove
716	<i>Morus rubra</i>	Mulberry	14"	Poor; Missing/Dead Limbs	Remove
717	<i>Pinus nigra</i>	Austrian Pine	10"	Poor; Missing/Dead Limbs	Remove
718	<i>Salix nigra</i>	Black Willow	20"	Poor; Missing/Dead Limbs	Remove
719	<i>Picea abies</i>	Norway Spruce	10"	Fair	Remove
720	<i>Picea abies</i>	Norway Spruce	14"	Fair	Remove
721	<i>Malus</i>	Apple/Crab	14"	Poor; Missing/Dead Limbs	Preserve
722	<i>Morus rubra</i>	Mulberry	10"	Poor; Missing/Dead Limbs	Remove
723	<i>Salix nigra</i>	Black Willow	10", 6"	Poor; Leaning	Remove
724	<i>Salix nigra</i>	Black Willow	10"	Poor; Crowded	Remove
725	<i>Acer rubra</i>	Red Maple	10", 14"	Poor; Split Risk	Remove
726	<i>Acer rubra</i>	Red Maple	50", 34"	Fair; Split Risk	Preserve
727	<i>Acer rubra</i>	Red Maple	24", 20", 27"	Good	Preserve
728	<i>Pinus nigra</i>	Austrian Pine	9"	Fair; Missing/Dead Limbs	Preserve
729	<i>Pinus strobus</i>	White Pine	7"	Good	Preserve
730	<i>Pinus strobus</i>	White Pine	9"	Good	Preserve
731	<i>Populus deltoides</i>	Eastern Cottonwood	16"	Poor; Leaning	Remove
732	<i>Populus deltoides</i>	Eastern Cottonwood	16"	Poor; Leaning	Remove
733	<i>Populus deltoides</i>	Eastern Cottonwood	14", 10"	Poor; Split Risk	Remove
734	<i>Populus deltoides</i>	Eastern Cottonwood	10", 12", 6"	Poor; Split Risk	Remove
735	<i>Populus deltoides</i>	Eastern Cottonwood	12"	Poor; Leaning	Remove
736	<i>Populus deltoides</i>	Eastern Cottonwood	16"	Fair	Remove
737	<i>Populus deltoides</i>	Eastern Cottonwood	18"	Poor; Leaning	Remove
738	<i>Salix nigra</i>	Black Willow	6", 8", 12"	Poor; Split Risk	Remove

TAG NO.	BOTANICAL NAME	COMMON NAME	SIZE	HEALTH/STRUCTURE	PROPOSED ACTION
739	<i>Populus deltoides</i>	Eastern Cottonwood	6", 8"	Poor; Split Risk	Remove
740	<i>Populus deltoides</i>	Eastern Cottonwood	6", 12", 10"	Poor; Split Risk	Remove
741	<i>Populus deltoides</i>	Eastern Cottonwood	32"	Poor; Leaning	Remove
742	<i>Populus deltoides</i>	Eastern Cottonwood	12", 12"	Poor; Split Risk	Remove
743	<i>Morus rubra</i>	Mulberry	4", 4", 4"	Poor; Missing/Dead Limbs	Remove
744	<i>Malus</i>	Apple/Crab	5"	Good	Remove
745	<i>Populus deltoides</i>	Eastern Cottonwood	16"	Poor; Leaning	Remove
746	<i>Populus deltoides</i>	Eastern Cottonwood	18"	Poor; Leaning	Remove
747	<i>Populus deltoides</i>	Eastern Cottonwood	6"	Poor; Leaning	Remove
748	<i>Populus deltoides</i>	Eastern Cottonwood	14"	Poor; Leaning	Remove
749	<i>Populus deltoides</i>	Eastern Cottonwood	12"	Poor; Leaning	Remove
750	<i>Populus deltoides</i>	Eastern Cottonwood	16"	Poor; Leaning	Remove
751	<i>Populus deltoides</i>	Eastern Cottonwood	30"	Poor; Leaning	Remove
752	<i>Acer negundo</i>	Box Elder	6", 7", 6"	Poor; Crowded	Preserve
753	<i>Acer negundo</i>	Box Elder	9", 4", 6"	Poor; Crowded	Preserve
754	<i>Celtis occidentalis</i>	Common Hackberry	16", 14", 12"	Good	Preserve
755	<i>Gleditsia triacanthos</i>	Honey Locust	32"	Fair; Missing/Dead Limbs	Remove
756	<i>Pinus nigra</i>	Austrian Pine	26"	Poor; Missing/Dead Limbs	Remove
757	<i>Pinus nigra</i>	Austrian Pine	24"	Poor; Leaning	Remove
758	<i>Gleditsia triacanthos</i>	Honey Locust	28"	Fair; Missing/Dead Limbs	Remove
759	<i>Gleditsia triacanthos</i>	Honey Locust	44"	Fair; Missing/Dead Limbs	Remove



**TREE PRESERVATION DETAIL**

3	7.06.18
2	6.04.18
1	5.15.18

DATE	3.26.18
PROJECT NO.	DR1705
DRAWN	MG
CHECKED	JCT
SHEET NO.	