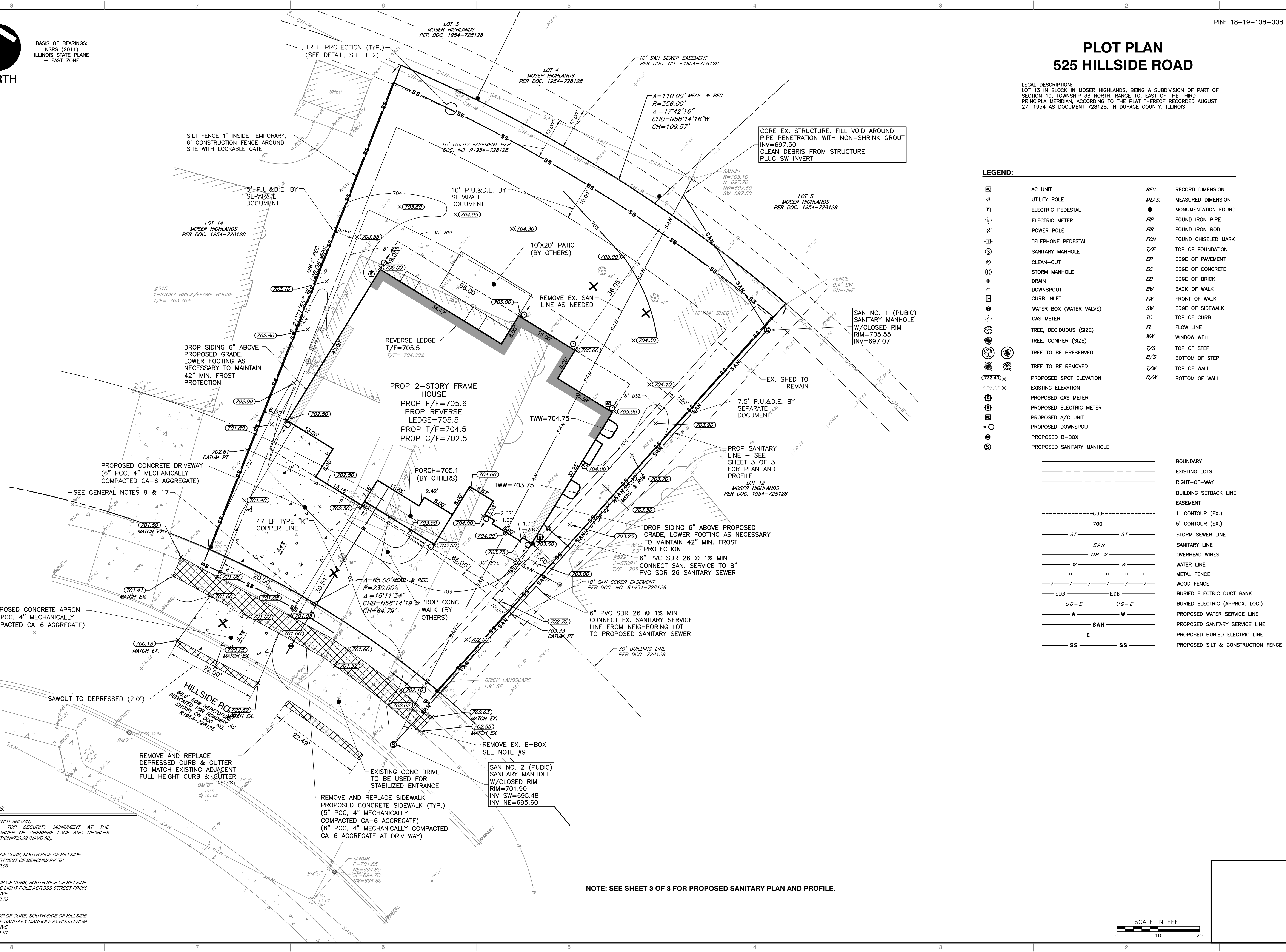


BASIS OF BEARINGS:
NSRS (2011)
ILLINOIS STATE PLANE
- EAST ZONE

PLOT PLAN

525 HILLSIDE ROAD

LEGAL DESCRIPTION:
LOT 13 IN BLOCK IN MOSER HIGHLANDS, BEING A SUBDIVISION OF PART OF SECTION 19, TOWNSHIP 38 NORTH, RANGE 10, EAST OF THE THIRD PRINCIPAL MERIDIAN, ACCORDING TO THE PLAT THEREOF RECORDED AUGUST 27, 1954 AS DOCUMENT 728128, IN DUPAGE COUNTY, ILLINOIS.



LEGEND:

	AC UNIT		RECORD DIMENSION
	UTILITY POLE		MEASURED DIMENSION
	ELECTRIC PEDESTAL		MONUMENTATION FOUND
	ELECTRIC METER		FOUND IRON PIPE
	POWER POLE		FOUND IRON ROD
	TELEPHONE PEDESTAL		FOUND CHISELED MARK
	SANITARY MANHOLE		TOP OF FOUNDATION
	CLEAN-OUT		EDGE OF PAVEMENT
	STORM MANHOLE		EDGE OF CONCRETE
	DRAIN		EDGE OF BRICK
	DOWNSPOUT		BACK OF WALK
	CURB INLET		FRONT OF WALK
	WATER BOX (WATER VALVE)		EDGE OF SIDEWALK
	GAS METER		TOP OF CURB
	TREE, DECIDUOUS (SIZE)		FLOW LINE
	TREE, CONIFER (SIZE)		WINDOW WELL
	TREE TO BE PRESERVED		TOP OF STEP
	TREE TO BE REMOVED		BOTTOM OF STEP
	PROPOSED SPOT ELEVATION		TOP OF WALL
	EXISTING ELEVATION		BOTTOM OF WALL
	PROPOSED GAS METER		
	PROPOSED ELECTRIC METER		
	PROPOSED A/C UNIT		
	PROPOSED DOWNSPOUT		
	PROPOSED B-BOX		
	PROPOSED SANITARY MANHOLE		

	BOUNDARY
	EXISTING LOTS
	RIGHT-OF-WAY
	BUILDING SETBACK LINE
	EASEMENT
	1' CONTOUR (EX.)
	5' CONTOUR (EX.)
	STORM SEWER LINE
	SANITARY LINE
	OVERHEAD WIRES
	WATER LINE
	METAL FENCE
	WOOD FENCE
	BURIED ELECTRIC DUCT BANK
	BURIED ELECTRIC (APPROX. LOC.)
	PROPOSED WATER SERVICE LINE
	PROPOSED SANITARY SERVICE LINE
	PROPOSED BURIED ELECTRIC LINE
	PROPOSED SILT & CONSTRUCTION FENCE

A: 1320-2001-0521-5911-0002 [09:13:28:97-C091-S01-REV] Plan.mxd [LOT PLAN EXHIBIT] 13/12/2022 10:29 AM

BENCHMARKS:

STATION # 1007 (NOT SHOWN)
BERNTSEN 3D TOP SECURITY MONUMENT AT THE
SOUTHEAST CORNER OF CHESHIRE LANE AND CHARLES
STREET. ELEVATION=733.69 (NAVD 88).

BM A:
"X" CUT ON TOP OF CURB, SOUTH SIDE OF HILLSIDE
DRIVE 23 1/2 NORTHWEST OF BENCHMARK "B".
ELEVATION = 700.06

BM B:
"X" CUT ON TOP OF CURB, SOUTH SIDE OF HILLSIDE
DRIVE, OPPOSITE LIGHT POLE ACROSS STREET FROM
525 HILLSIDE DRIVE.
ELEVATION = 700.70

BM C:
"X" CUT ON TOP OF CURB, SOUTH SIDE OF HILLSIDE
DRIVE, OPPOSITE SANITARY MANHOLE ACROSS FROM
529 HILLSIDE DRIVE.
ELEVATION = 701.61

NOTE: SEE SHEET 3 OF 3 FOR PROPOSED SANITARY PLAN AND PROFILE.



REVISION RECORD	
NO.	DATE

Civil & Environmental Consultants, Inc.
1230 East Diehl Road, Suite 200 - Naperville, IL 60563
www.cecinc.com
630-963-6026 - 877-963-6026

525 EAST HILLSIDE ROAD

NAPERVILLE, ILLINOIS 60540

PLOT PLAN	DATE: JUNE 7, 2022	DRAWN BY: CPJ	
	DWG SCALE: 1"=10'	CHECKED BY: TJG	
	PROJECT NO: 323-897	APPROVED BY: TJG	

DRAWING NO.: **CV-01**

SHEET 1 OF 1