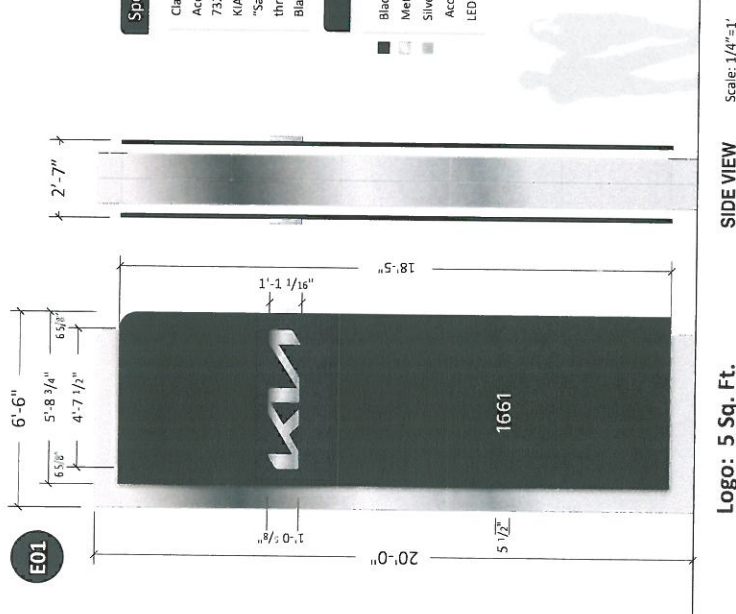


KUSPS20



Logo: 5 Sq. Ft.
Total: 130 Sq. Ft.

NOTE:
Will attempt to reuse existing foundation.
Dealer to provide electrical prior to installation.

Specifications

- Cladding – 4MM KIA Black and Metallic Silver ACM
- Accent Lighting – 7100K LED illumination with 7328 White Polycarbonate Lens
- KIA Wordmark – Milled Aluminum and Plastic
- “Sandwich” Design with 7100K LED illumination thru edge of filler
- Black edge always toward street >

COLORS

- Black KIA ACM – TBD
- Metallic Silver KIA ACM – Alflex Exotic Mica
- Silver Reflective Vinyl
- Accent Lighting Lens – 7328 White LED – 7100K White illumination

TO BE REMOVED



Existing KPSN20 Pylon

NOTE: PSG to remove & scrap existing pylon.

Project ID
JH2-44361-R2

Date: 03-28-2022
Scale: As noted
Sales: E. Mackle
Designer: D. Reyes

Rev. #: R2
Date: 05-24-2022

Revision Note:
R2: Add the number portion of the address to the pylon “1661” (silver reflective vinyl).

Missing Information

Required:

Electrical

120V
 347V
Other

Customer Approval

Signature
MM/DD/YYYY

It is the Customer's responsibility to ensure that the structure of the building is designed and constructed to accept the installation of the signs being ordered. Please ask PSG to provide further details if required.

All rights reserved. The artwork design and layout are copyright and are the exclusive property of Pattison Sign Group and as such cannot be reproduced in whole or in part without written permission by Pattison Sign Group.

IL054
Gerald Kia of Naperville
1661 Aurora Ave
Naperville, IL 60540

Sign Item
E01

Any non-compliant Kia logo (i.e., window vinyl, doors/entry vinyl, parking signs, directional signs, multi-tenant signs, reader board graphics, etc.) not represented in this proposal must be updated by the Dealer to the current compliant Kia logo or must be removed.



520 W Summit Hill, Suite 702, Knoxville TN, 37902
(Toll Free) 1.866.635.1110 (Fax) 1.888.694.1106
www.pattisonsign.com



This sign is installed in accordance with the requirements of Article 600 of the National Electrical Code and all applicable codes. This includes proper grounding and bonding of the sign.

Fluorescent, Neon and HID lamps contain Mercury (Hg). Dispose of the lamps according to local, Provincial, State or Federal laws.

EXHIBIT C