

Preliminary Landscape Plan

NORTHWOODS OF NAPERVILLE

Naperville, Illinois
January 02, 2024

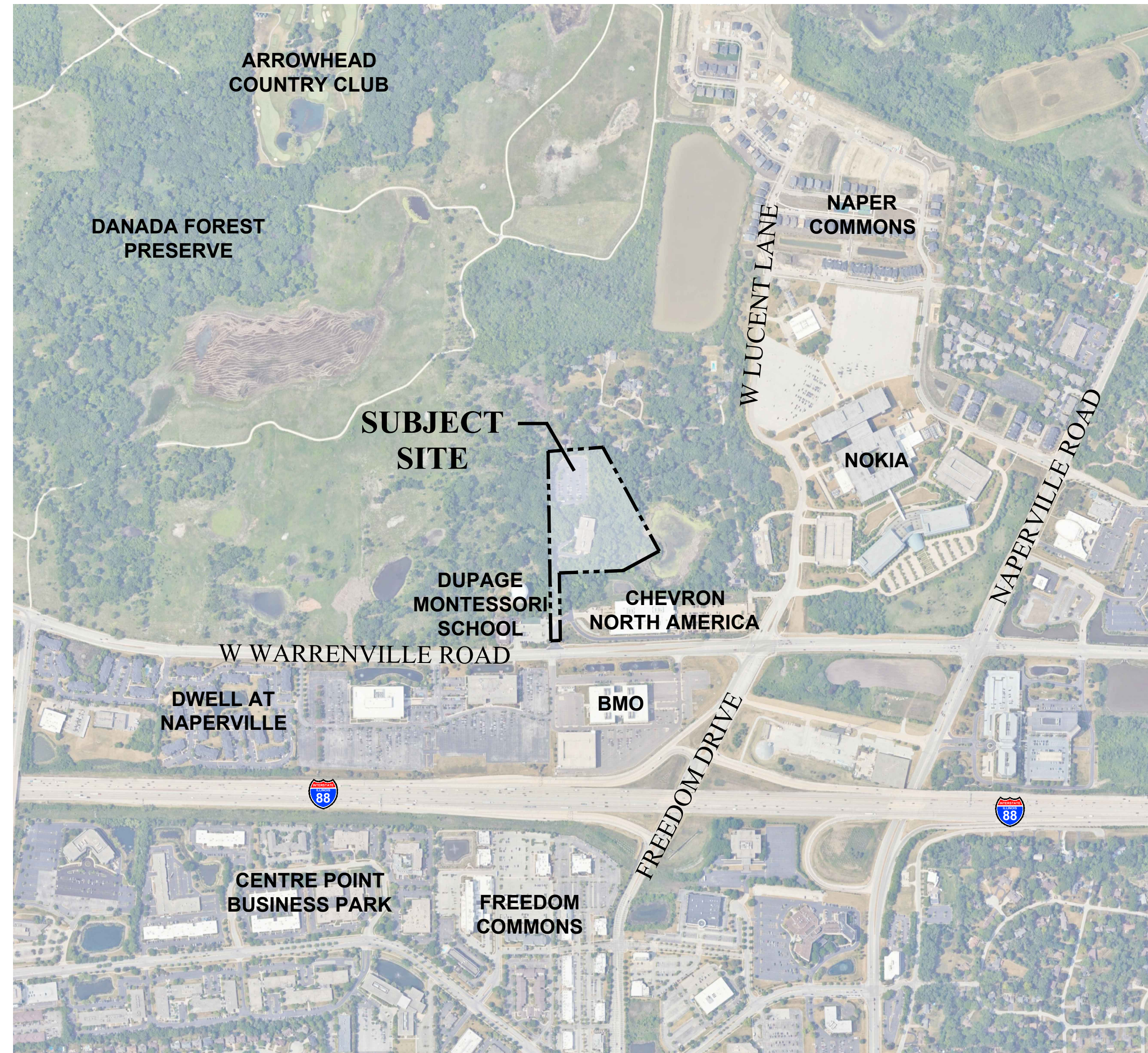
CONSULTANTS:



LANDSCAPE ARCHITECT:
GARY R. WEBER ASSOCIATES, INC
402 W. LIBERTY DRIVE
WHEATON, ILLINOIS 60187



CIVIL ENGINEER:
CAGE
2200 CABOT DR., SUITE 325
LISLE, IL 60532



LOCATION MAP
SCALE: 1"=600'



INDEX OF SHEETS

SHEET NO.	DESCRIPTION
0	COVER SHEET
1	OVERALL LANDSCAPE PLAN
2	LANDSCAPE PLAN
3	LANDSCAPE PLAN
4	TYPICAL FOUNDATION LANDSCAPE PLAN
5	TYPICAL FOUNDATION LANDSCAPE PLAN
6	TYPICAL FOUNDATION LANDSCAPE PLAN
7	OVERALL TREE PRESERVATION PLAN
8	TREE PRESERVATION PLAN
9	TREE PRESERVATION PLAN
10	TREE INVENTORY
11	TREE INVENTORY
12	TREE INVENTORY

REPRESENTATIVE PLANT LIST

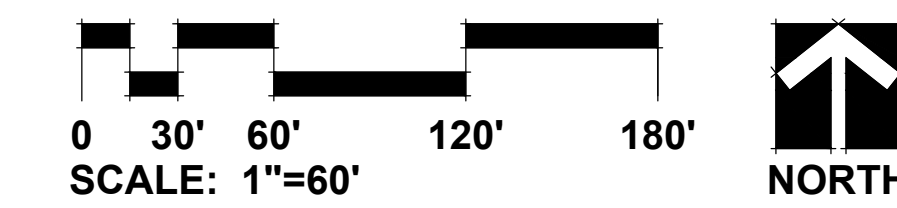
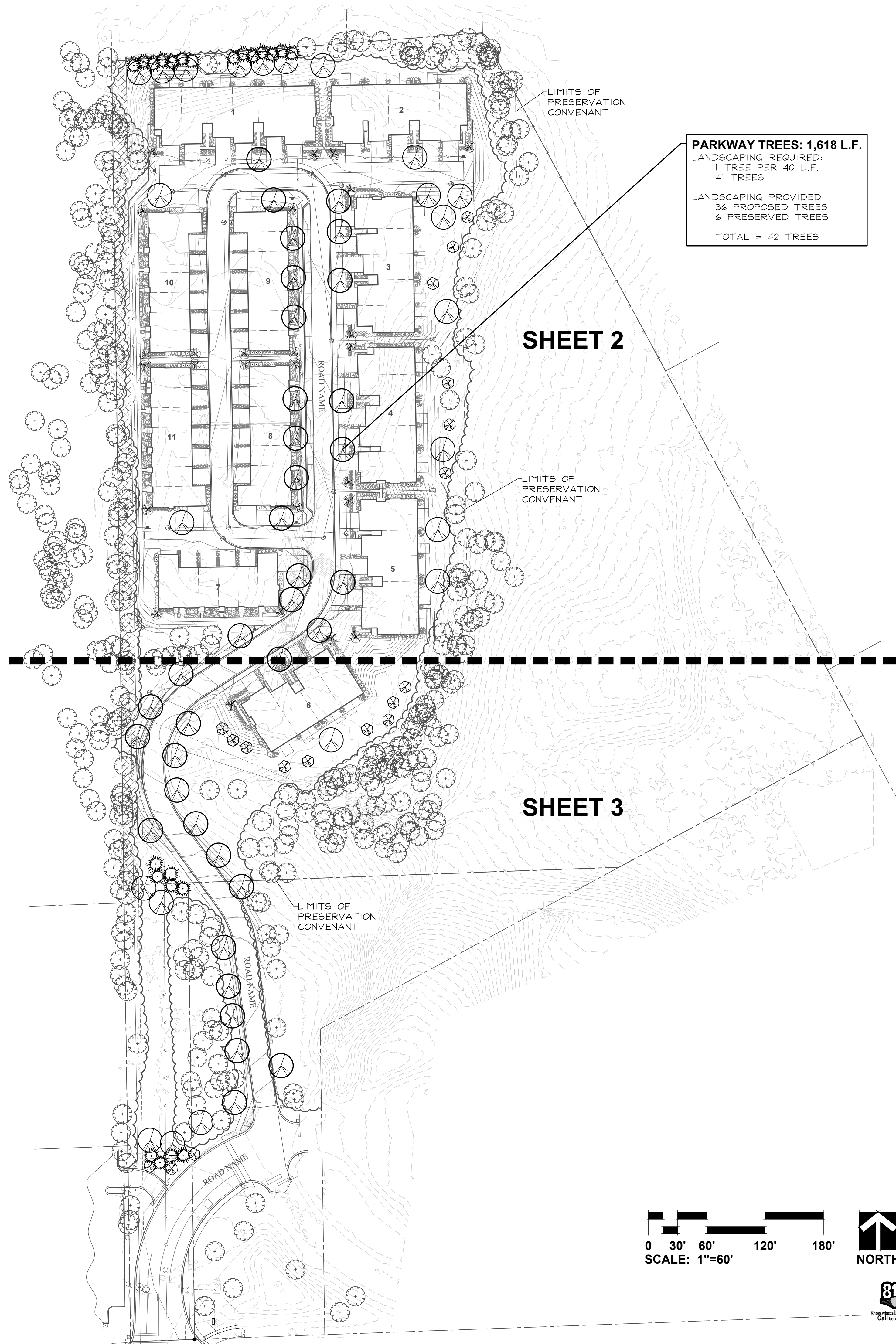
Key	Botanical/Common Name	Size	Remarks
	SHADE TREES		
	Acer x freemanii 'Jeffers Red' AUTUMN BLAZE MAPLE	2 1/2" Cal.	PARKWAY
	Acer saccharum 'Green Mountain' GREEN MOUNTAIN SUGAR MAPLE	2 1/2" Cal.	PARKWAY
	Celtis occidentalis COMMON HACKBERRY	2 1/2" Cal.	PARKWAY
	Gleditsia triacanthos var. inermis 'Skycole' SKYLINE HONEYLOCUST	2 1/2" Cal.	PARKWAY
	Quercus bicolor SWAMP WHITE OAK	2 1/2" Cal.	PARKWAY
	Quercus macrocarpa BUR OAK	2 1/2" Cal.	PARKWAY
	Tilia americana 'Redmond' REDMOND AMERICAN LINDEN	2 1/2" Cal.	PARKWAY
	Tilia cordata 'Greenspire' GREENSPIRE LITTLELEAF LINDEN	2 1/2" Cal.	PARKWAY
	Ulmus carpinifolia 'New Horizon' NEW HORIZON SMOOTHLEAF ELM	2 1/2" Cal.	PARKWAY
	ORNAMENTAL TREES		
	Amelanchier x grandiflora APPLE SERVICEBERRY	6' Ht.	Multi-Stem
	Betula nigra 'Cully' HERITAGE RIVER BIRCH	6' Ht.	Multi-Stem
	Cercis canadensis EASTERN REDBUD	6' Ht.	Multi-Stem
	Malus 'Prairifire' PRAIRIFIRE CRABAPPLE	6' Ht.	Multi-Stem
	Syringa reticulata 'Ivory Silk' IVORY SILK JAPANESE TREE LILAC	6' Ht.	Multi-Stem
	EVERGREEN TREES		
	Abies concolor WHITE FIR	8' Ht.	
	Picea abies NORWAY SPRUCE	8' Ht.	
	Picea glauca var. densata BLACK HILLS SPRUCE	8' Ht.	
	Picea omorika SERBIAN SPRUCE	8' Ht.	
	Pinus strobus EASTERN WHITE PINE	8' Ht.	
	DECIDUOUS SHRUBS		
	Cornus sericea 'Bailey' BAILEY'S REDTWIG DOGWOOD	36" Tall	5' O.C.
	Hydrangea paniculata 'SMHPLOF' LITTLE QUICK FIRE HYDRANGEA	24" Tall	3' O.C.
	Itea virginica 'Little Henry' LITTLE HENRY VIRGINIA SWEETSPIRE	24" Tall	3' O.C.
	Physocarpus opulifolius 'Seward' SUMMER WINE NINEBARK	30" Tall	4' O.C.
	Rhus aromatica 'Gro-low' GRO-LOW SUMAC	24" Wide	4' O.C.
	Syringa meyeri 'Paladin' DWARF KOREAN LILAC	24" Tall	4' O.C.
	Viburnum x juddii JUDD VIBURNUM	36" Tall	4' O.C.
	Weigela florida 'Bramwell' FINE WINE WEIGELA	24" Tall	3' O.C.
	EVERGREEN SHRUBS		
	Juniperus chinensis 'Kallays Compact' KALLAYS COMPACT PFITZER JUNIPER	24" Wide	4' O.C.
	Juniperus chinensis 'Sea Green' SEA GREEN JUNIPER	30" Wide	5' O.C.
	Taxus x media 'Densiflora' DENSE YEW	24" Wide	4' O.C.
	PERENNIALS AND ORNAMENTAL GRASSES		
	Allium 'Summer Beauty' SUMMER BEAUTY ONION	#1	18" O.C.
	Calamagrostis x acutiflora 'Karl Foerster' FEATHER REED GRASS	#1	30" O.C.
	Echinacea 'CBG Cone 2' PIXIE MEADOWBRITE CONEFLOWER	#1	18" O.C.
	Hemerocallis 'Happy Returns' HAPPY RETURNS DAYLILY	#1	18" O.C.
	Nepeta racemosa 'Walker's Low' WALKER'S LOW GATMINT	#1	18" O.C.
	Panicum virgatum 'Heavy Metal' HEAVY METAL SWITCHGRASS	#1	24" O.C.
	Perovskia atriplicifolia RUSSIAN SAGE	#1	24" O.C.
	Schizachyrium scoparium 'Twilight Zone' TWILIGHT LITTLE BLUESTEM	#1	24" O.C.
	Sporobolus heterolepis PRAIRIE DROPSEED	#1	24" O.C.
	GROUNDCOVERS		
	Liriope spicata CREEPING LILYTURF	#SP4	18" O.C.
	Vinca minor 'Dart's Blue' DART'S BLUE PERIWINKLE	#SP4	12" O.C.
	NATIVE SEEDING		

GENERAL LANDSCAPE NOTES

- Contractor shall verify underground utility lines and is responsible for any damage.
- Contractor shall verify all existing conditions in the field prior to construction and shall notify landscape architect of any variance.
- Material quantities shown are for contractors convenience only. The Contractor must verify all material and supply sufficient materials to complete the job per plan.
- The landscape architect reserves the right to inspect trees and shrubs either at place of growth or at site before planting, for compliance with requirements of variety, size and quality.
- Work shall conform to American Standard for Nursery Stock, State of Illinois Horticultural Standards, and Local Municipal requirements.
- Contractor shall secure and pay for all permits, fees, and inspections necessary for the proper execution of this work and comply with all codes applicable to this work.
- See General Conditions and Specifications for landscape work for additional requirements.

DEPARTMENT OF PUBLIC UTILITIES: ELECTRICAL GENERAL NOTES

- Clearance to transformer pad SHALL be 5' from all sides, 10' from front, and the area above must be completely clear of obstruction. No trees, shrubs, or other obstacles will be allowed within this area. Transformer pad SHALL maintain minimum clearance of 20' from egress points. Per DPUE specifications C10-2130 AND C30-0016.
- Clearance to underground electric service conductors should be at least 2'. No trees, shrubs, or other obstacles will be allowed within this area.
- At all times, the Customer shall be solely responsible for maintaining a suitable approach to the meter location, with no obstructions within four (4') feet of the front and two (2') feet of the sides of the Meter. Per NAPERVILLE SERVICE RULES AND POLICIES 22.2.F



GARY R. WEBER
ASSOCIATES, INC.
LAND PLANNING
ECOLOGICAL CONSULTING
LANDSCAPE ARCHITECTURE
402 W. LIBERTY DRIVE
WHEATON, ILLINOIS 60187
PHONE: 630-668-7197
www.grwainc.com

CLIENT



M/I HOMES
2135 CITY GATE LANE, SUITE 620
NAPERVILLE, IL 60563

ENGINEER

CAGE
2200 CABOT DRIVE
SUITE 325
LISLE, IL 60532

NORTHWOODS OF NAPERVILLE
NAPERVILLE, ILLINOIS

OVERALL LANDSCAPE PLAN

1 01.02.2024
REVISIONS

DATE 11.12.2024
PROJECT NO. MI24251
DRAWN AJG
CHECKED DHS
SHEET NO.

1 OF 12





GARY R. WEBER
ASSOCIATES, INC.
LAND PLANNING
ECOLOGICAL CONSULTING
LANDSCAPE ARCHITECTURE
402 W. LIBERTY DRIVE
WHEATON, ILLINOIS 60187
PHONE: 630-668-7197
www.grwainc.com

CLIENT



M/I HOMES
2135 CITY GATE LANE, SUITE 620
NAPERVILLE, IL 60563

ENGINEER

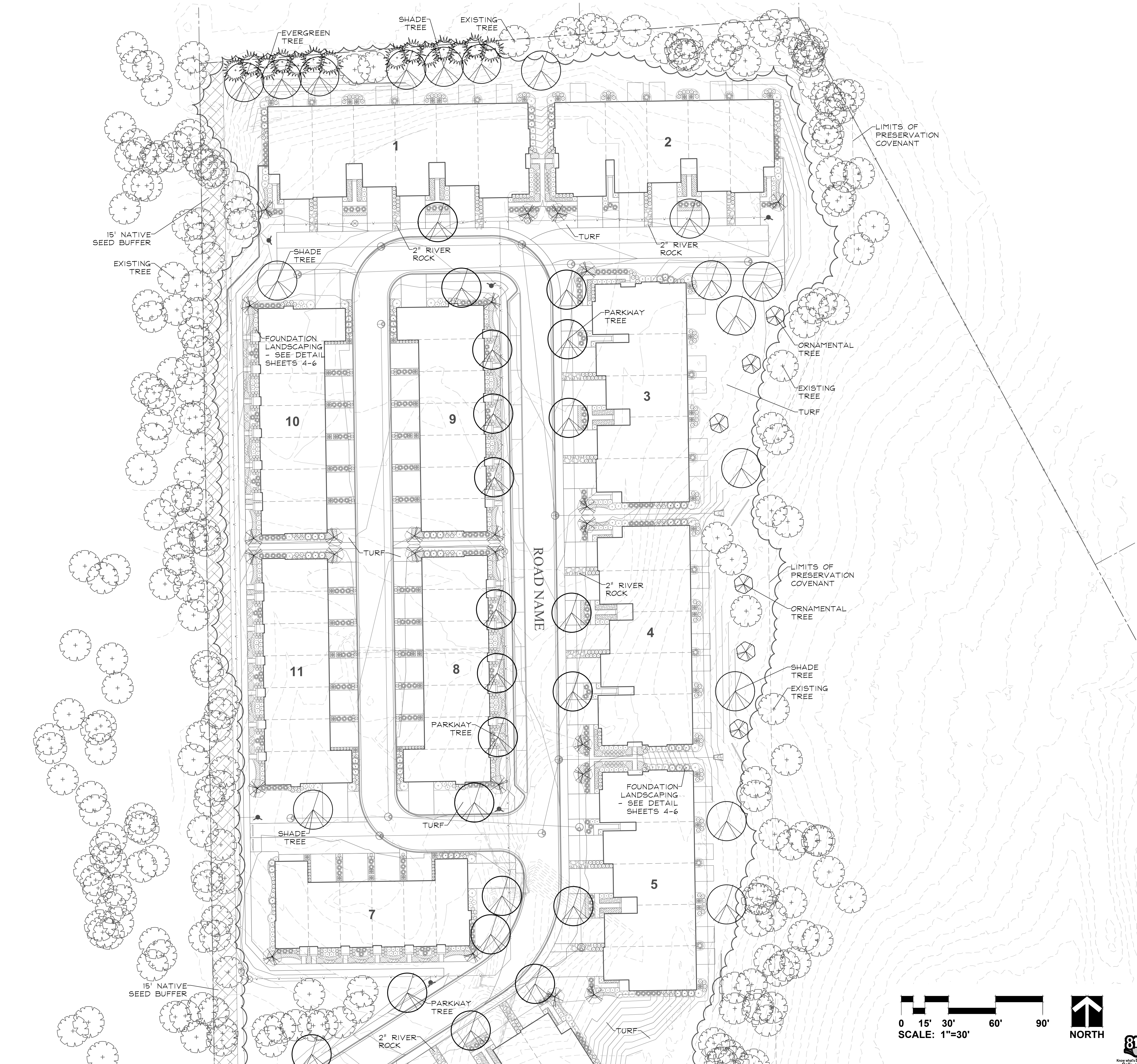
CAGE
2200 CABOT DRIVE
SUITE 325
LISLE, IL 60532

NORTHWOODS OF NAPERVILLE
NAPERVILLE, ILLINOIS
LANDSCAPE PLAN

NO.	DATE	REVISIONS
1	01.02.2024	

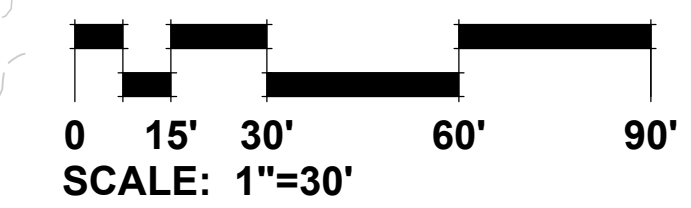
DATE 11.12.2024
PROJECT NO. M124251
DRAWN AJG
CHECKED DHS
SHEET NO.

2 OF 12



LEGEND

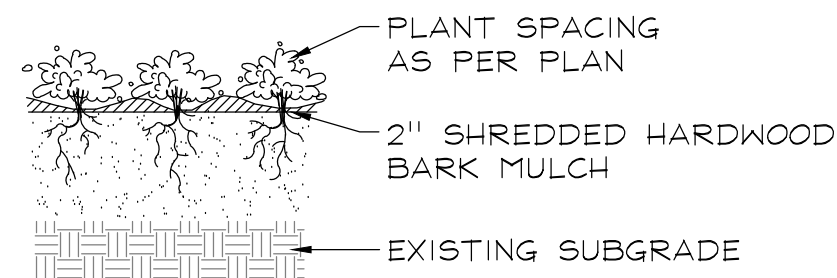
- SHADE TREES
- ORNAMENTAL TREES
- EVERGREEN TREES
- DECIDUOUS SHRUBS
- EVERGREEN SHRUBS
- PERENNIALS
- ORNAMENTAL GRASSES
- GROUNDCOVERS
- NATIVE SEEDING



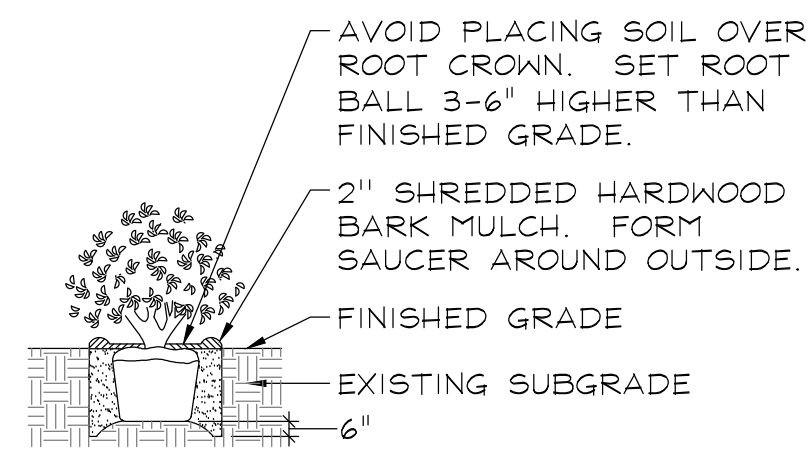
MATCHLINE - SHEET 3



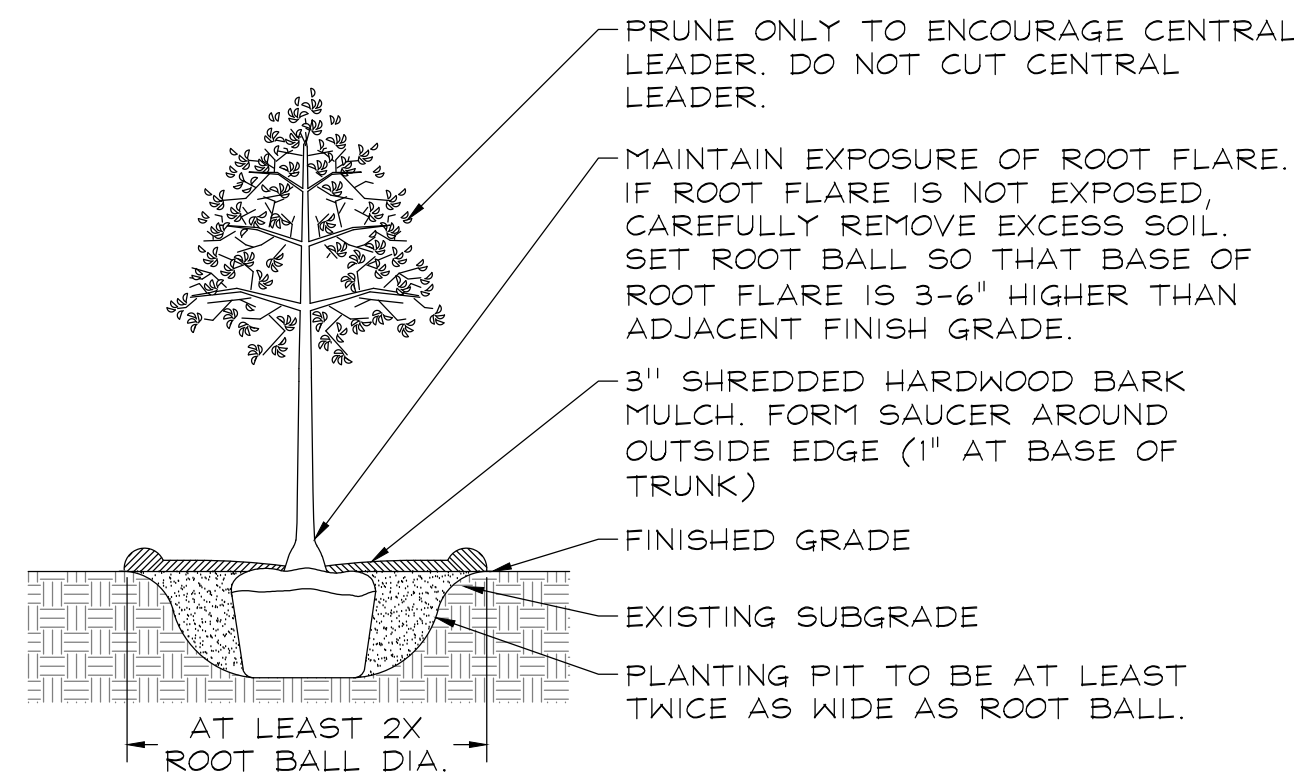
PLANTING DETAILS



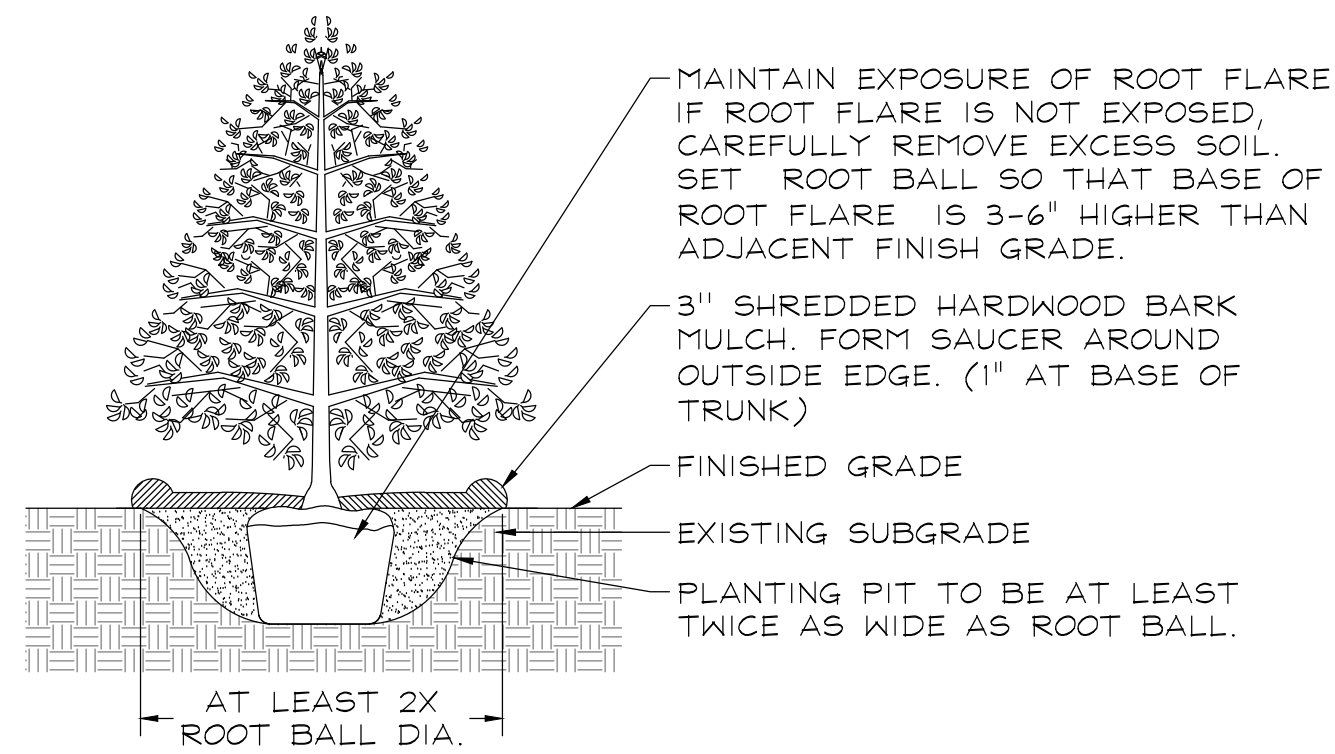
PERENNIALS AND GROUNDCOVERS NOT TO SCALE



DECIDUOUS AND EVERGREEN SHRUBS NOT TO SCALE



DECIDUOUS TREES NOT TO SCALE



EVERGREEN TREES NOT TO SCALE

LEGEND

- SHADE TREES
- ORNAMENTAL TREES
- EVERGREEN TREES
- DECIDUOUS SHRUBS
- EVERGREEN SHRUBS
- PERENNIALS
- ORNAMENTAL GRASSES
- GROUNDCOVERS
- NATIVE SEEDING

MATCHLINE - SHEET 2



GARY R. WEBER ASSOCIATES, INC.
LAND PLANNING
ECOLOGICAL CONSULTING
LANDSCAPE ARCHITECTURE
402 W. LIBERTY DRIVE
WHEATON, ILLINOIS 60187
PHONE: 630-668-7197
www.grwainc.com

CLIENT



M/I HOMES
2135 CITY GATE LANE, SUITE 620
NAPERVILLE, IL 60563

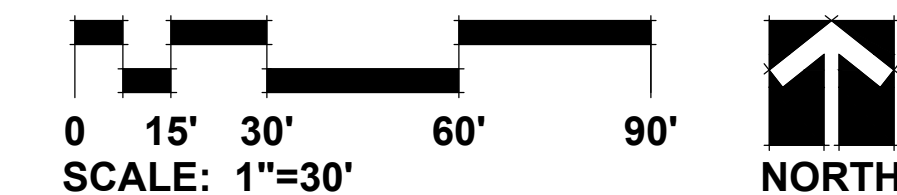
ENGINEER

CAGE
2200 CABOT DRIVE
SUITE 325
LISLE, IL 60532

NORTHWOODS OF NAPERVILLE NAPERVILLE, ILLINOIS LANDSCAPE PLAN

REVISIONS	DATE
1	01.02.2024

DATE 11.12.2024
PROJECT NO. M124251
DRAWN AJG
CHECKED DHS
SHEET NO.



811
Dig safely below.
Call before you dig.



GARY R. WEBER
ASSOCIATES, INC.
LAND PLANNING
ECOLOGICAL CONSULTING
LANDSCAPE ARCHITECTURE
402 W. LIBERTY DRIVE
WHEATON, ILLINOIS 60187
PHONE: 630-668-7197
www.grwainc.com

CLIENT



M/I HOMES
2135 CITY GATE LANE, SUITE 620
NAPERVILLE, IL 60563

ENGINEER

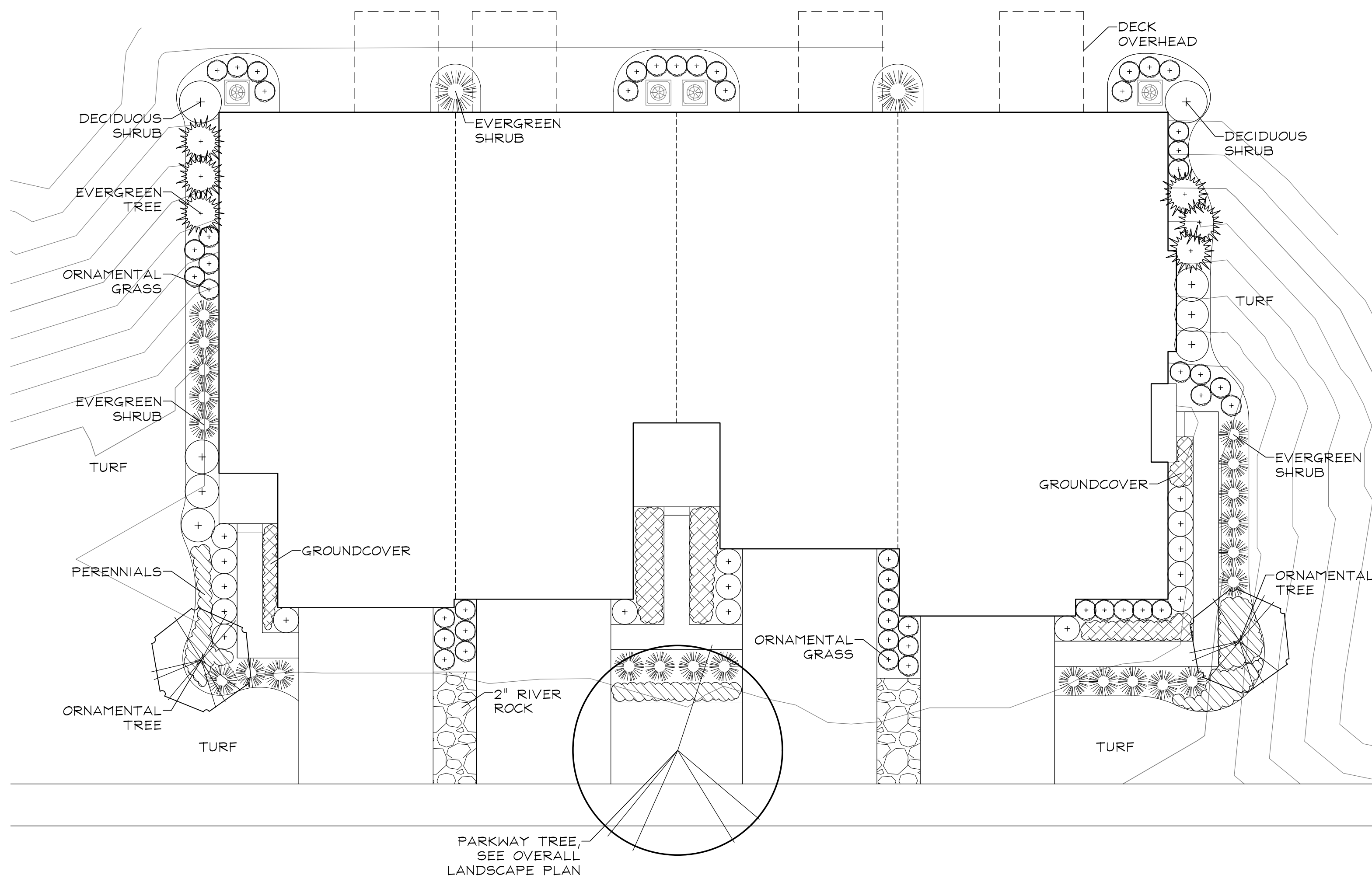
CAGE
2200 CABOT DRIVE
SUITE 325
LISLE, IL 60532

NORTHWOODS OF NAPERVILLE
NAPERVILLE, ILLINOIS

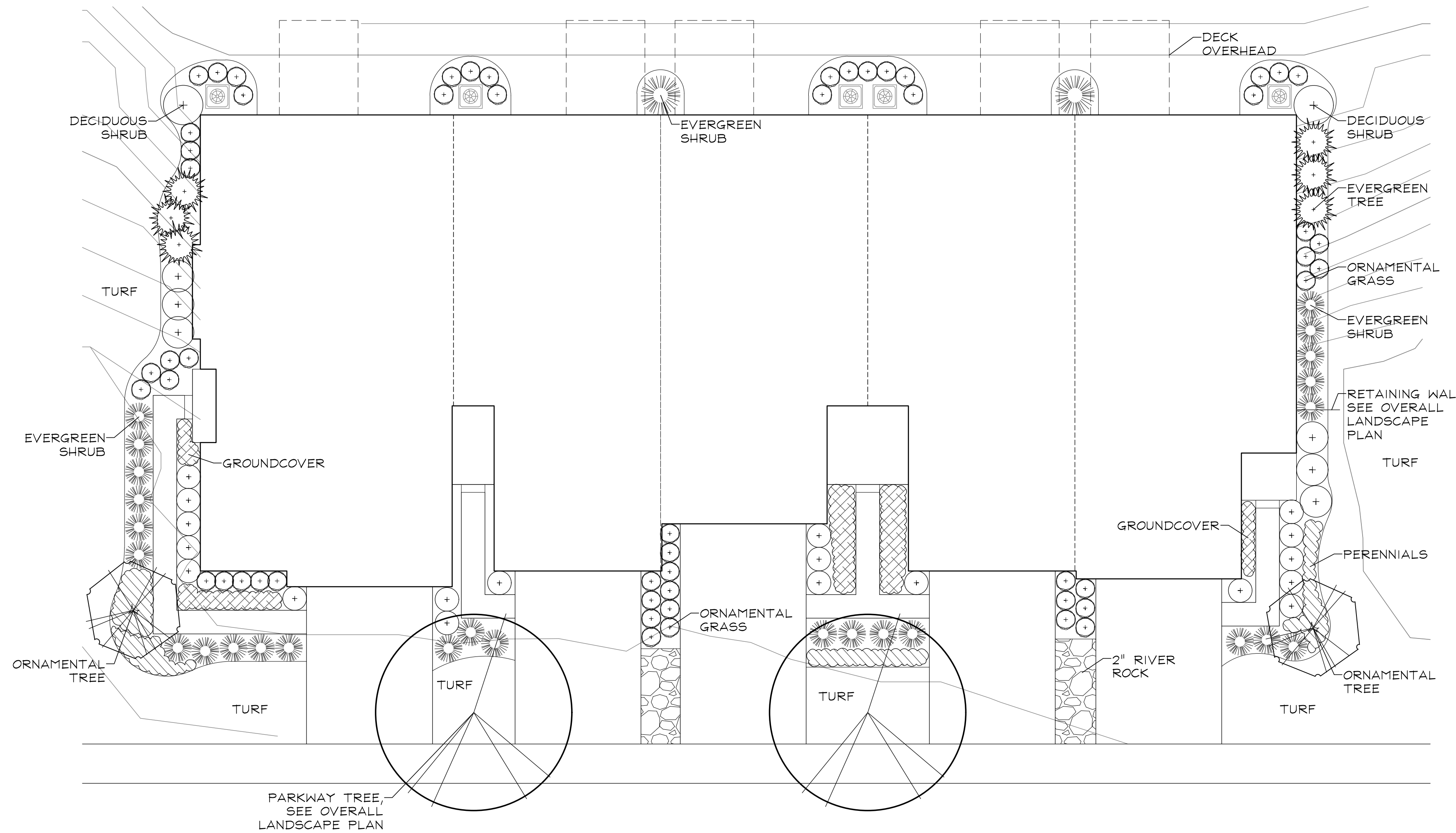
TYPICAL FOUNDATION LANDSCAPE PLANS

REPRESENTATIVE FOUNDATION PLANT LIST

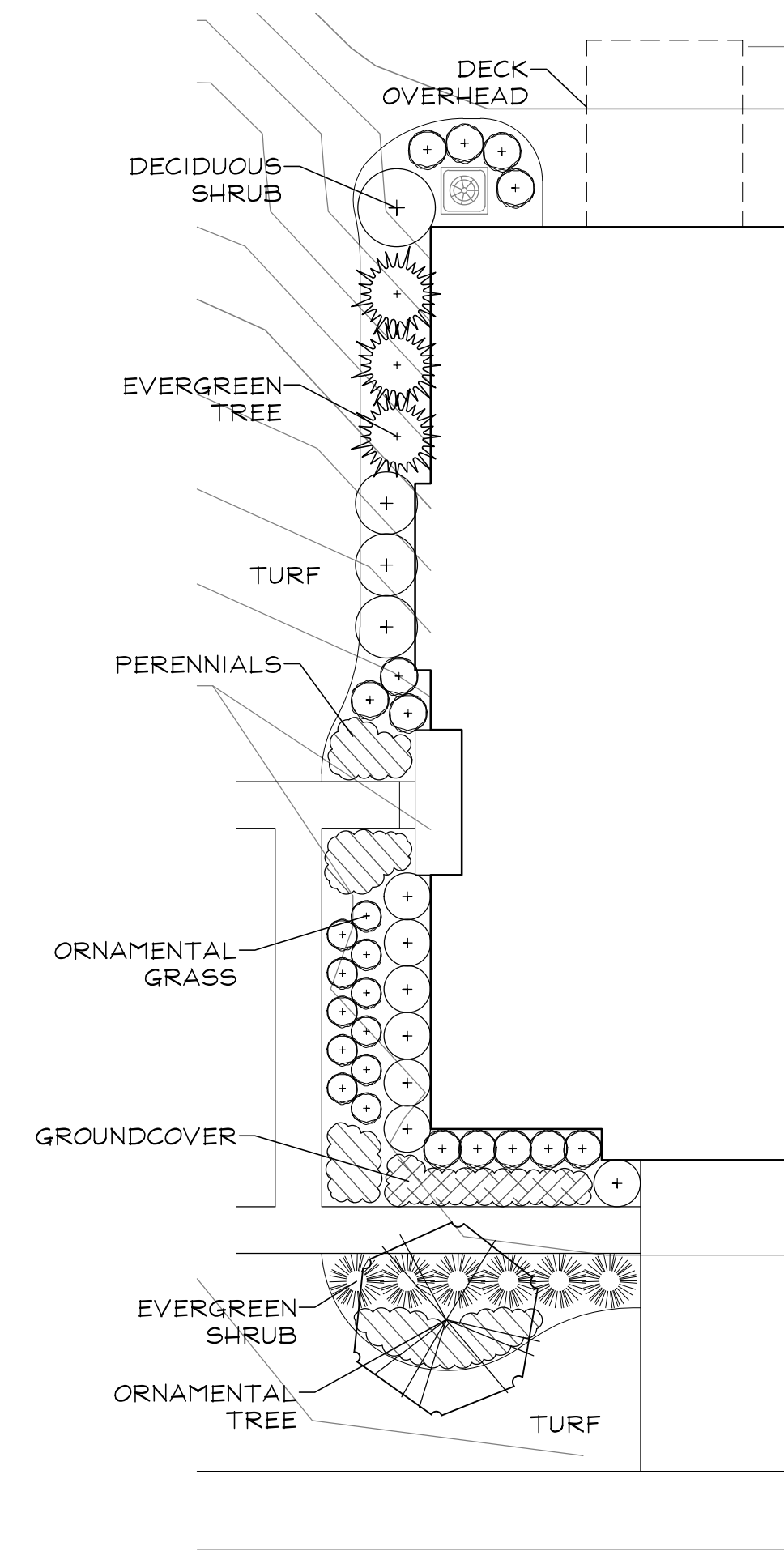
Key	Botanical/Common Name	Size	Remarks	Key	Botanical/Common Name	Size	Remarks
	ORNAMENTAL TREES				ORNAMENTAL GRASSES		
	Amelanchier grandiflora APPLE SERVICEBERRY	6' Tall	Clump Form		Panicum virgatum 'Rotstrahibusch' RED SWITCHGRASS	#1	30" O.C.
	Cornus mas CORNELIANCHERRY DOGWOOD	6' Tall	Clump Form		Miscanthus sinensis 'Purpurascens' PURPLE MAIDEN GRASS	#3	36" O.C.
	Magnolia stellata 'Royal Star' ROYAL STAR MAGNOLIA	6' Tall	Clump Form		Pennisetum alopecuroides 'Hameln' DWARF FOUNTAIN GRASS	#1	24" O.C.
	Malus sargentii SARGENT'S CRABAPPLE	6' Tall	Clump Form		Sporobolus heterolepis PRAIRIE DROPSSEED	#1	24" O.C.
	Syringa reticulata 'Ivory Silk' IVORY SILK JAPANESE TREE LILAC	6' Tall	Clump Form		PERENNIALS		
	EVERGREEN TREES				Coreopsis verticillata 'Zagreb' ZAGREB COREOPSIS	#1	18" O.C.
	Thuja occidentalis 'Emerald' EMERALD GREEN ARBORVITAE	5' Tall			Hosta 'Patriot' PATRIOT HOSTA	#1	24" O.C.
	DECIDUOUS SHRUBS				Hemerocallis 'Rosy Returns' ROSY RETURNS DAYLILY	#1	18" O.C.
	Cornus sericea 'Bailey' BAILEY'S REDTWIG DOGWOOD	30" Tall	4' O.C.		Rudbeckia fulgida 'Goldsturm' BLACK-EYED SUSAN	#1	18" O.C.
	Hydrangea quercifolia 'Munchkin' MUNCHKIN OAKLEAF HYDRANGEA	24" Tall	3' O.C.		Salvia nemorosa 'East Friesland' EAST FRIESLAND SALVIA	#1	18" O.C.
	Itea virginica 'Sprich' LITTLE HENRY VIRGINIA SWEETSPIRE	24" Tall	3' O.C.		GROUNDCOVERS		
	Rosa 'Radrazz' KNOCKOUT ROSE	18" Tall	3' O.C.		Euonymus fortunei var. 'Coloratus' PURPLELEAF WINTERCREEPER	#SP4	12" O.C.
	Syringa meyeri 'Palibin' DWARF KOREAN LILAC	24" Tall	4' O.C.		Vinca minor 'Dart's Blue' DART'S BLUE PERIWINKLE	#SP4	12" O.C.
	Viburnum dentatum 'Christom' BLUE MUFFIN ARROWWOOD VIBURNUM	30" Tall	4' O.C.		MISC. MATERIALS		
	Weigela florida 'Branmuell' FINE WINE WEIGELA	24" Tall	3' O.C.		RIVER ROCK	C.Y.	3" DEPTH
	EVERGREEN SHRUBS						
	Buxus 'Glencoe' CHICAGOLAND GREEN BOXWOOD	24" Wide	4' O.C.				
	Juniperus chinensis 'Kallays Compact' KALLAY COMPACT PFITZER JUNIPER	24" Wide	4' O.C.				
	Taxus x media 'Densiflora' DENSE YEW	24" Wide	4' O.C.				
	Thuja occidentalis 'Nigra' DARK GREEN ARBORVITAE	8' Ht.	4' O.C.				



TYPICAL 4 UNIT FRONT-LOAD TOWNHOME FOUNDATION LANDSCAPE PLAN
SCALE: 1"=10'



TYPICAL 5 UNIT FRONT-LOAD TOWNHOME FOUNDATION LANDSCAPE PLAN
SCALE: 1"=10'



ALTERNATE 5 UNIT END
FOUNDATION LANDSCAPE PLAN
SCALE: 1"=10'

CODE REVIEW

**4 UNIT FRONT-LOAD TOWNHOME
FOUNDATION LANDSCAPING: 396'**
LANDSCAPING REQUIRED:
1 PLANT PER 3 L.F. = 132 PLANTS
LANDSCAPING PROVIDED:
132 PLANTS

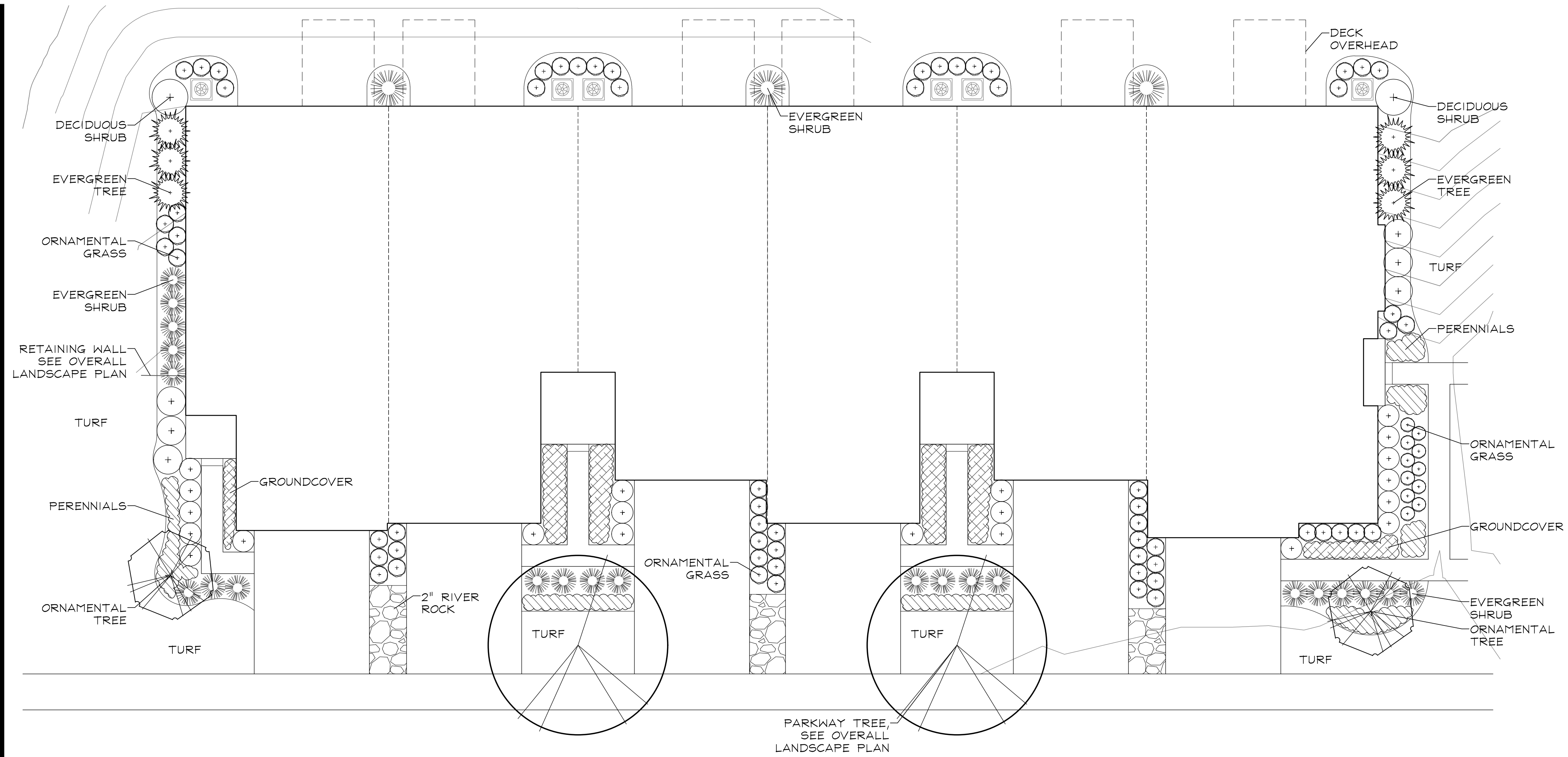
**5 UNIT FRONT-LOAD TOWNHOME
FOUNDATION LANDSCAPING: 491'**
LANDSCAPING REQUIRED:
1 PLANT PER 3 L.F. = 164 PLANTS
LANDSCAPING PROVIDED:
164 PLANTS

1 01.02.2024
REVISIONS

DATE 11.12.2024
PROJECT NO. M124251
DRAWN AJG
CHECKED DHS
SHEET NO.



Know what's below.
Call before you dig.



TYPICAL 6 UNIT FRONT-LOAD TOWNHOME FOUNDATION LANDSCAPE PLAN
SCALE: 1"=10'

CODE REVIEW

6 UNIT FRONT-LOAD TOWNHOME FOUNDATION LANDSCAPING: 543'
LANDSCAPING REQUIRED:
1 PLANT PER 3 L.F. = 181 PLANTS
LANDSCAPING PROVIDED:
181 PLANTS

6 UNIT REAR-LOAD TOWNHOME FOUNDATION LANDSCAPING: 399'
LANDSCAPING REQUIRED:
1 PLANT PER 3 L.F. = 133 PLANTS
LANDSCAPING PROVIDED:
133 PLANTS



GARY R. WEBER ASSOCIATES, INC.
LAND PLANNING
ECOLOGICAL CONSULTING
LANDSCAPE ARCHITECTURE
402 W. LIBERTY DRIVE
WHEATON, ILLINOIS 60187
PHONE: 630-668-7197
www.grwainc.com

CLIENT



M/I HOMES
2135 CITY GATE LANE, SUITE 620
NAPERVILLE, IL 60563

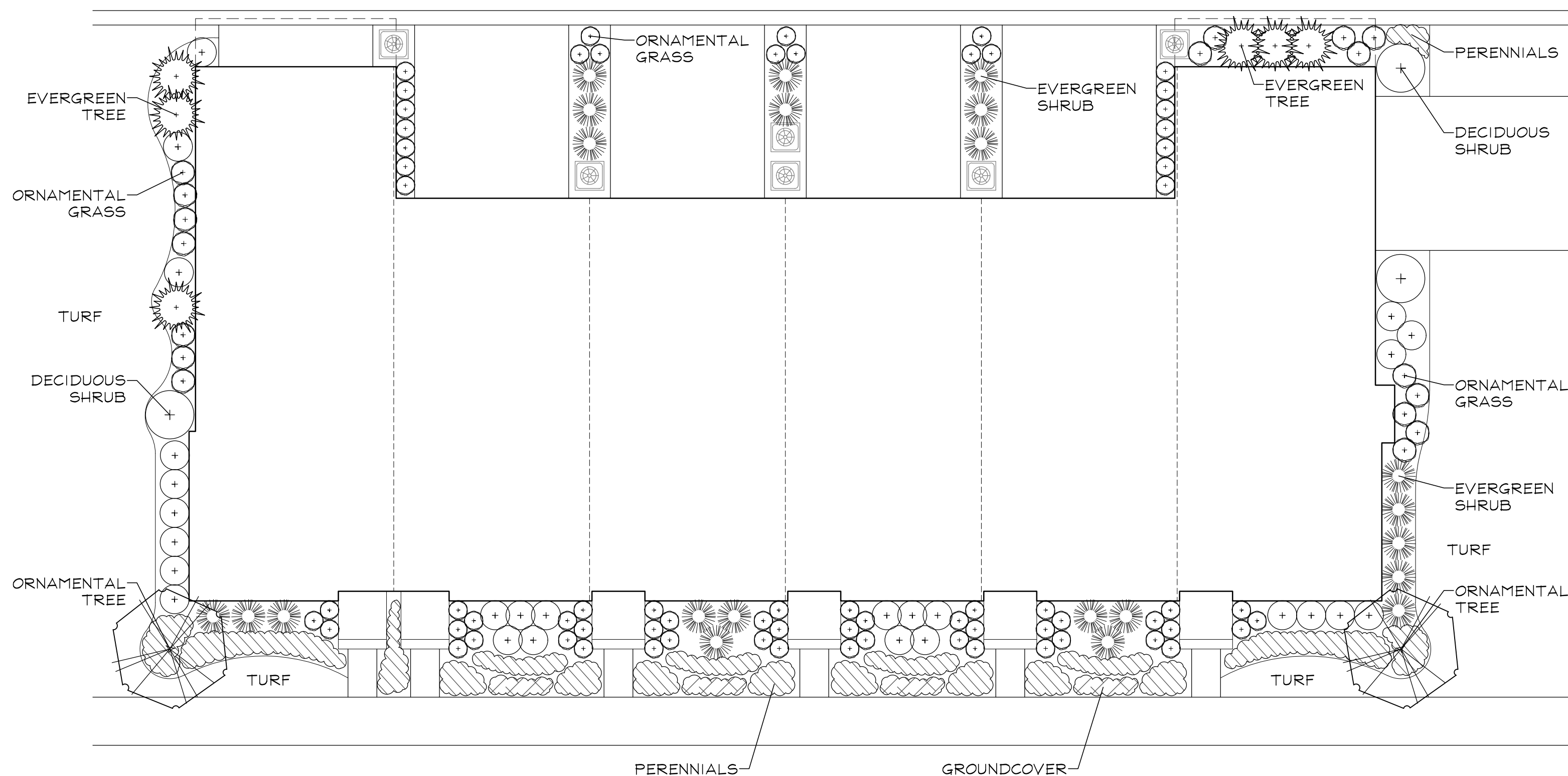
ENGINEER

CAGE
2200 CABOT DRIVE
SUITE 325
LISLE, IL 60532

NORTHWOODS OF NAPERVILLE
NAPERVILLE, ILLINOIS
TYPICAL FOUNDATION LANDSCAPE PLANS

REPRESENTATIVE FOUNDATION PLANT LIST

Key	Botanical/Common Name	Size	Remarks	Key	Botanical/Common Name	Size	Remarks
ORNAMENTAL TREES				ORNAMENTAL GRASSES			
	Amelanchier grandiflora APPLE SERVICEBERRY	6' Tall	Clump Form		Panicum virgatum 'Rotstrahlbusch' RED SWITCHGRASS	#1	30" O.C.
	Cornus mas CORNELIANCHERRY DOGWOOD	6' Tall	Clump Form		Miscanthus sinensis 'Purpurascens' PURPLE MAIDEN GRASS	#3	36" O.C.
	Magnolia stellata 'Royal Star' ROYAL STAR MAGNOLIA	6' Tall	Clump Form		Pennisetum alopecuroides 'Hameln' DWARF FOUNTAIN GRASS	#1	24" O.C.
	Malus sargentii SARGENT CRABAPPLE	6' Tall	Clump Form		Sporobolus heterolepis PRAIRIE DROPSSEED	#1	24" O.C.
	Syringa reticulata 'Ivory Silk' IVORY SILK JAPANESE TREE LILAC	6' Tall	Clump Form	PERENNIALS			
	EVERGREEN TREES				Coreopsis verticillata 'Zagreb' ZAGREB COREOPSIS	#1	18" O.C.
	Thuja occidentalis 'Emerald' EMERALD GREEN ARBORVITAE	5' Tall			Hosta 'Patriot' PATRIOT HOSTA	#1	24" O.C.
	DECIDUOUS SHRUBS				Hemerocallis 'Rosy Returns' ROSY RETURNS DAYLILY	#1	18" O.C.
	Cornus sericea 'Bailey' BAILEY'S REDTWIG DOGWOOD	30" Tall	4' O.C.		Rudbeckia fulgida 'Goldsturm' BLACK-EYED SUSAN	#1	18" O.C.
	Hydrangea opacifolia 'Munchkin' MUNCHKIN OAKLEAF HYDRANGEA	24" Tall	3' O.C.		Salvia nemorosa 'East Friesland' EAST FRIESLAND SALVIA	#1	18" O.C.
	Itea virginica 'Sprich' LITTLE HENRY VIRGINIA SWEETSPIRE	24" Tall	3' O.C.	GROUNDCOVERS			
	Rosa 'Radrazz' KNOCKOUT ROSE	18" Tall	3' O.C.		Euonymus fortunei var. 'Coloratus' PURPLELEAF WINTERCREEPER	#SP4	12" O.C.
	Syringa meyeri 'Palibin' DWARF KOREAN LILAC	24" Tall	4' O.C.		Vinca minor 'Dart's Blue' DART'S BLUE PERIWINKLE	#SP4	12" O.C.
	Viburnum dentatum 'Christom' BLUE MUFFIN ARROWWOOD VIBURNUM	30" Tall	4' O.C.	MISC. MATERIALS			
	Weigela florida 'Bramwell' FINE WINE WEIGELA	24" Tall	3' O.C.		RIVER ROCK	C.Y.	3" DEPTH
	EVERGREEN SHRUBS						
	Buxus 'Glencoe' CHICAGO LAND GREEN BOXWOOD	24" Wide	4' O.C.				
	Juniperus chinensis 'Kallays Compact' KALLAY COMPACT PFITZER JUNIPER	24" Wide	4' O.C.				
	Taxus x media 'Densiformis' DENSE YEW	24" Wide	4' O.C.				
	Thuja occidentalis 'Nigra' DARK GREEN ARBORVITAE	8' Ht.	4' O.C.				



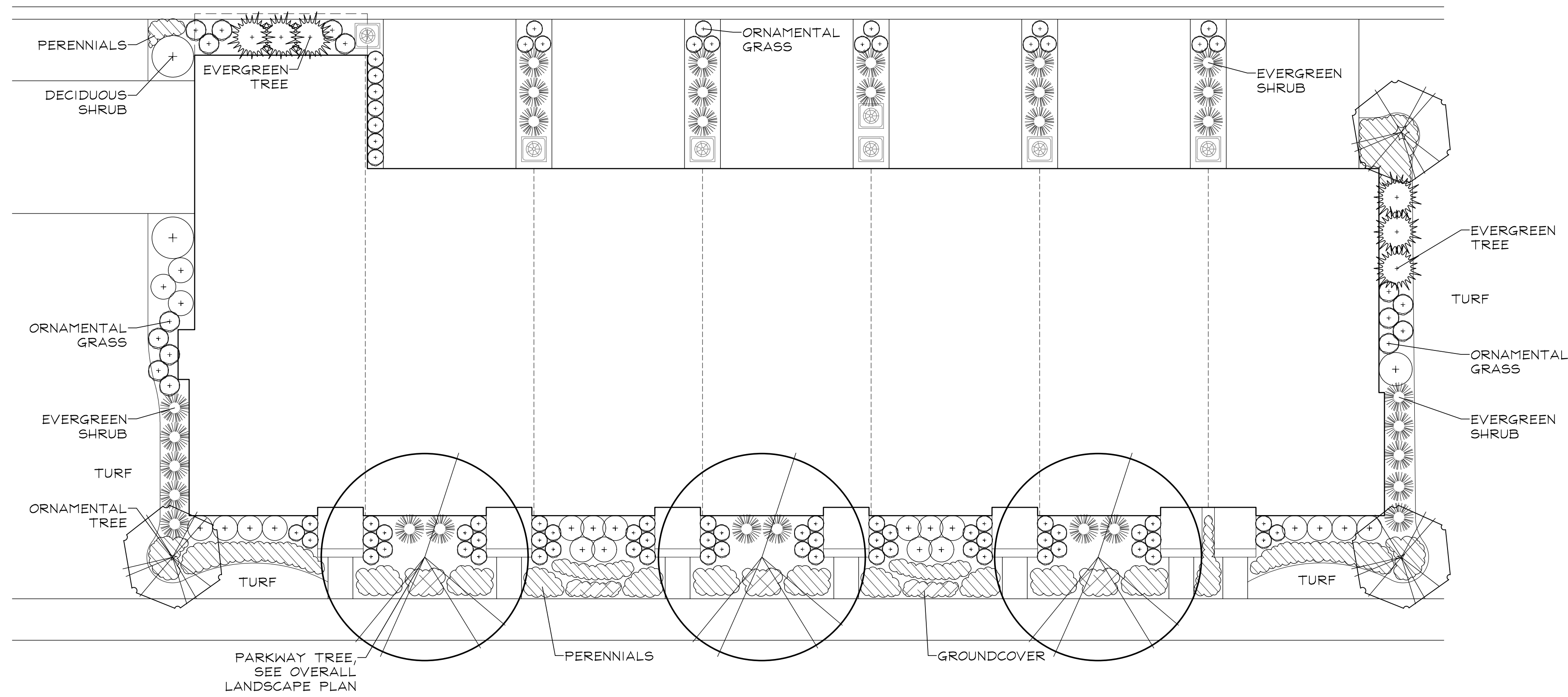
TYPICAL 6 UNIT REAR-LOAD TOWNHOME FOUNDATION LANDSCAPE PLAN
SCALE: 1"=10'

1	01.02.2024
REVISIONS	

DATE	11.12.2024
PROJECT NO.	M124251
DRAWN	AJG
CHECKED	DHS
SHEET NO.	



Know what's below.
Call before you dig.



TYPICAL 7 UNIT REAR-LOAD TOWNHOME FOUNDATION LANDSCAPE PLAN
 SCALE: 1"=10'

REPRESENTATIVE FOUNDATION PLANT LIST

Key	Botanical/Common Name	Size	Remarks	Key	Botanical/Common Name	Size	Remarks
ORNAMENTAL TREES				ORNAMENTAL GRASSES			
	<i>Amelanchier grandiflora</i> APPLE SERVICEBERRY	6' Tall	Clump Form		<i>Panicum virgatum</i> 'Rotstrahbusch' RED SWITCHGRASS	#1	30" O.C.
	<i>Cornus mas</i> CORNELIANCHERRY DOGWOOD	6' Tall	Clump Form		<i>Miscanthus sinensis</i> 'Purpurascens' PURPLE MAIDEN GRASS	#3	36" O.C.
	<i>Magnolia stellata</i> 'Royal Star' ROYAL STAR MAGNOLIA	6' Tall	Clump Form		<i>Pennisetum alopecuroides</i> 'Hameln' DWARF FOUNTAIN GRASS	#1	24" O.C.
	<i>Malus sargentii</i> SARGENT CRABAPPLE	6' Tall	Clump Form		<i>Sporobolus heterolepis</i> PRAIRIE DROPSSEED	#1	24" O.C.
	<i>Syringa reticulata</i> 'Ivory Silk' IVORY SILK JAPANESE TREE LILAC	6' Tall	Clump Form	PERENNIALS			
	EVERGREEN TREES				<i>Coreopsis verticillata</i> 'Zagreb' ZAGREB COREOPSIS	#1	18" O.C.
	<i>Thuja occidentalis</i> 'Smaragd' EMERALD GREEN ARBORVITAE	5' Tall			<i>Hosta 'Patriot'</i> PATRIOT HOSTA	#1	24" O.C.
	DECIDUOUS SHRUBS				<i>Hemerocallis 'Rosy Returns'</i> ROSY RETURNS DAYLILY	#1	18" O.C.
	<i>Cornus sericea</i> 'Bailey' BAILEY'S REDTIG DOGWOOD	30" Tall	4' O.C.		<i>Rudbeckia fulgida</i> 'Goldsturm' BLACK-EYED SUSAN	#1	18" O.C.
	<i>Hydrangea quercifolia</i> 'Munchkin' MUNCHKIN OAKLEAF HYDRANGEA	24" Tall	3' O.C.		<i>Salvia nemorosa</i> 'East Friesland' EAST FRIESLAND SALVIA	#1	18" O.C.
	<i>Itea virginica</i> 'Sprich' LITTLE HENRY VIRGINIA SWEETSPIRE	24" Tall	3' O.C.	GROUNDCOVERS			
	<i>Rosa 'Radratz'</i> KNOCKOUT ROSE	18" Tall	3' O.C.		<i>Euonymus fortunei</i> var. 'Coloratus' PURPLELEAF WINTERCREEPER	#SP4	12" O.C.
	<i>Syringa meyeri</i> 'Palibin' DWARF KOREAN LILAC	24" Tall	4' O.C.		<i>Vinca minor</i> 'Dart's Blue' DART'S BLUE PERIWINKLE	#SP4	12" O.C.
	<i>Viburnum dentatum</i> 'Christam' BLUE MUFFIN ARROWWOOD VIBURNUM	30" Tall	4' O.C.	MISC. MATERIALS			
	<i>Weigela florida</i> 'Bromwell' FINE WINE WEIGELA	24" Tall	3' O.C.		RIVER ROCK	C.Y.	3" DEPTH
	EVERGREEN SHRUBS						
	<i>Buxus 'Glencoe'</i> CHICAGOLAND GREEN BOXWOOD	24" Wide	4' O.C.				
	<i>Juniperus chinensis</i> 'Kallays Compact' KALLAY COMPACT PFITZER JUNIPER	24" Wide	4' O.C.				
	<i>Taxus x media</i> 'Densiformis' DENSE YEW	24" Wide	4' O.C.				
	<i>Thuja occidentalis</i> 'Nigra' DARK GREEN ARBORVITAE	8' Ht.	4' O.C.				

CODE REVIEW

7 UNIT REAR-LOAD TOWNHOME FOUNDATION LANDSCAPING: 414'
 LANDSCAPING REQUIRED:
 1 PLANT PER 3 L.F. = 138 PLANTS
 LANDSCAPING PROVIDED:
 138 PLANTS



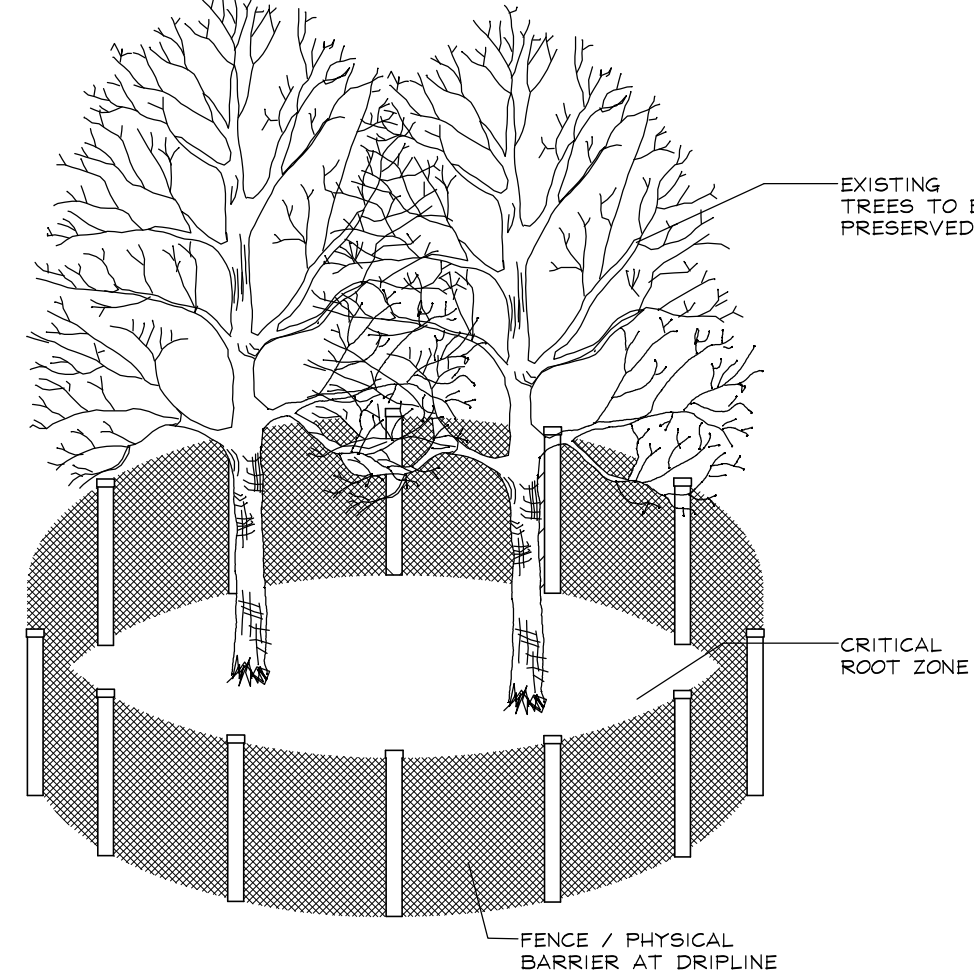
RATING AND SURVEY CRITERIA

- 1) Trees measured at 4.5 ft above the ground - DBH (diameter Breast Height)
- 2) All trees 4" DBH and above tagged. Dead trees were tagged for removal. Invasive shrubs were not tagged.
- 3) Health Rating:

Rating	Description	Criteria
1	Excellent	Less than 10% dead wood, typical growth for species, no observed defects
2	Good	Less than 20% dead wood, minor defects, sound structure, no decay
3	Fair	Less than 30% dead wood, minor crown die-back, minor trunk damage or cavities
4	Fair to Poor	Approximately 30-50% dead wood, lacking full crown, minor disease evidence, trunk damage
5	Poor	Over 50% dead wood, lacking full crown, disease or decay evident, structural damage/cavities
6	Dead	Less than 10% living wood, greater than 50% missing bark, adventitious growth only, decay

TOTAL TREE COUNT: 845

TAG NO.	SCIENTIFIC NAME	COMMON NAME	DBH (inches)	CONDITION	STRUCTURE	HEALTH	PROPOSED ACTION	NOTES
623	<i>Gleditsia triacanthos</i>	Honey Locust	9	2 - Good			Remove	Conflict with proposed development
624	<i>Gleditsia triacanthos</i>	Honey Locust	9	2 - Good			Remove	Conflict with proposed development
625	<i>Gleditsia triacanthos</i>	Honey Locust	10	2 - Good			Remove	Conflict with proposed development
626	<i>Gleditsia triacanthos</i>	Honey Locust	9	2 - Good			Remove	Conflict with proposed development
627	<i>Gleditsia triacanthos</i>	Honey Locust	10	2 - Good			Remove	Conflict with proposed development
628	<i>Gleditsia triacanthos</i>	Honey Locust	10	3 - Fair	poor root collar		Remove	Conflict with proposed development
629	<i>Acer saccharum</i>	Sugar Maple	8	3 - Fair	Unbalanced		Remove	Conflict with proposed development
630	<i>Acer saccharum</i>	Sugar Maple	8	5 - Poor		40% dead wood, Hollow	Remove	Conflict with proposed development
631	<i>Acer saccharum</i>	Sugar Maple	7	4 - Fair/Poor	Crowded	Dead Limbs	Remove	Conflict with proposed development
632	<i>Ulmus americana</i>	American Elm	10	4 - Fair/Poor	Lean, Unbalanced		Remove	Conflict with proposed development
633	<i>Quercus alba</i>	White Oak	20	3 - Fair	Unbalanced		Remove	Conflict with proposed development
634	<i>Quercus alba</i>	White Oak	22	4 - Fair/Poor		20% dead wood, Dead Limbs	Remove	Conflict with proposed development
635	<i>Quercus alba</i>	White Oak	22	2 - Good			Remove	Conflict with proposed development
636	<i>Quercus alba</i>	White Oak	20	4 - Fair/Poor		20% dead wood, Dead Limbs	Remove	Conflict with proposed development
637	<i>Quercus alba</i>	White Oak	20	3 - Fair		Dead Limbs	Remove	Conflict with proposed development
638	<i>Juglans nigra</i>	Black Walnut	18	2 - Good			Remove	Conflict with proposed development
639	<i>Acer saccharum</i>	Sugar Maple	6	2 - Good			Remove	Conflict with proposed development
640	<i>Ulmus americana</i>	American Elm	12	6 - Dead			Remove	Conflict with proposed development
641	<i>Acer saccharum</i>	Sugar Maple	6	2 - Good			Remove	Conflict with proposed development
642	<i>Ulmus americana</i>	American Elm	7	3 - Fair	Lean, Crowded		Remove	Conflict with proposed development
643	<i>Acer saccharum</i>	Sugar Maple	10	2 - Good			Remove	Conflict with proposed development
644	<i>Quercus alba</i>	White Oak	28	3 - Fair		Dead Limbs, Tip die-back	Remove	Conflict with proposed development
645	<i>Ulmus americana</i>	American Elm	4	4 - Fair/Poor	Crown Lean, Crowded		Remove	Conflict with proposed development
646	<i>Quercus alba</i>	White Oak	26	3 - Fair	Crown Lean		Remove	Conflict with proposed development
647	<i>Ulmus americana</i>	American Elm	11	4 - Fair/Poor	Unbalanced, Crown Lean		Remove	Conflict with proposed development
648	<i>Ulmus americana</i>	American Elm	4	4 - Fair/Poor	Unbalanced, Crown Lean		Remove	Conflict with proposed development
649	<i>Pinus strobus</i>	White Pine	8	3 - Fair	Unbalanced		Remove	Conflict with proposed development
650	<i>Quercus alba</i>	White Oak	32	2 - Good		Tip die-back	Remove	Conflict with proposed development
651	<i>Acer saccharum</i>	Sugar Maple	11	4 - Fair/Poor		Adventitious Growth, Trunk Scar	Remove	Conflict with proposed development
652	<i>Quercus alba</i>	White Oak	20	2 - Good			Remove	Conflict with proposed development
653	<i>Acer saccharum</i>	Silver Maple	5	2 - Good			Remove	Conflict with proposed development
654	<i>Ulmus americana</i>	American Elm	7	5 - Poor	Lean	Cavity	Remove	Conflict with proposed development
655	<i>Prunus serotina</i>	Black Cherry	10	5 - Poor	Crown Lean	40% dead wood, Dead Limbs	Remove	Conflict with proposed development
656	<i>Acer saccharum</i>	Sugar Maple	8	2 - Good			Remove	Conflict with proposed development
657	<i>Acer saccharum</i>	Sugar Maple	5	3 - Fair	Unbalanced, Crowded		Remove	Conflict with proposed development
658	<i>Quercus alba</i>	White Oak	31	2 - Good			Remove	Conflict with proposed development
659	<i>Ulmus americana</i>	American Elm	7	4 - Fair/Poor	Unbalanced, Crown Lean	20% dead wood	Remove	Conflict with proposed development
660	<i>Acer saccharum</i>	Sugar Maple	4	2 - Good			Remove	Conflict with proposed development
661	<i>Quercus alba</i>	White Oak	18	2 - Good			Remove	Conflict with proposed development
662	<i>Quercus alba</i>	White Oak	15	3 - Fair		20% dead wood	Remove	Conflict with proposed development
663	<i>Ulmus americana</i>	American Elm	6	5 - Poor	Unbalanced, Crown Lean	30% dead wood	Remove	Conflict with proposed development
664	<i>Quercus alba</i>	White Oak	20	4 - Fair/Poor	Unbalanced	Adventitious Growth	Remove	Conflict with proposed development
665	<i>Quercus alba</i>	White Oak	21	3 - Fair		Adventitious Growth	Remove	Conflict with proposed development
666	<i>Quercus alba</i>	White Oak	23	2 - Good		Tip die-back	Remove	Conflict with proposed development
667	<i>Acer saccharum</i>	Sugar Maple	4	2 - Good			Remove	Conflict with proposed development
668	<i>Acer saccharum</i>	Sugar Maple	6	2 - Good			Remove	Conflict with proposed development
669	<i>Quercus alba</i>	White Oak	16	2 - Good			Remove	Conflict with proposed development
670	<i>Quercus alba</i>	White Oak	19	3 - Fair		20% dead wood, Tip die-back	Remove	Conflict with proposed development
671	<i>Ulmus americana</i>	American Elm	8	4 - Fair/Poor		30% dead wood, Adventitious Growth	Remove	Conflict with proposed development
672	<i>Quercus alba</i>	White Oak	18	3 - Fair		Tip die-back	Remove	Conflict with proposed development
673	<i>Quercus alba</i>	White Oak	21	2 - Good		20% dead wood	Remove	Conflict with proposed development
674	<i>Quercus alba</i>	White Oak	16	3 - Fair	Crown Lean		Remove	Conflict with proposed development
675	<i>Acer saccharum</i>	Sugar Maple	10	2 - Good			Remove	Conflict with proposed development



TREE PRESERVATION DETAIL




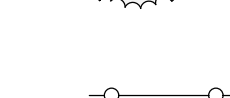
(NOT TO SCALE)
SEE NOTES

TREE PRESERVATION NOTES

1. 48" high snow fence or wood barriers shall extend to the dripline of the tree or tree mass whenever possible, shall be installed before construction begins, and should not be removed until the completion of construction.
2. All accidental damage to existing trees that are to be preserved shall be promptly treated as required in accordance with recognized horticultural practices and the instructions of the professional Arborist, Landscape Architect or Horticulturist.
3. Broken or badly bruised branches shall be removed with a clean cut. If recommended by the professional Arborist, Landscape Architect or Horticulturist.
4. Care shall be exercised by the contractors to protect all overhead limbs and branches from damage by contact with material, machinery or equipment and by damage from engine exhaust.
5. Contractors shall protect trees and vegetation against spills or discharge of fuels, lubricating oils, hydraulic fluids, anti-freeze and coolants, calcium chloride, lime and all other similar hydrocarbons, organic chemicals, and other materials which can be harmful.
6. When underground utilities are proposed within 5' of a preserved tree trunk, they must be augered if possible.
7. Trees within the limits of the Preservation Covenant shall not be disturbed or impacted by development.

Trees were located with a GPS device. Exact location is within a ±5' margin of error. Final location will be surveyed for final plan.

LEGEND

-  EXISTING TREE TO BE PRESERVED
-  ATTEMPT TO PRESERVE; POTENTIALLY IMPACTED TREE
-  EXISTING TREE TO BE REMOVED
-  PROTECTIVE FENCING

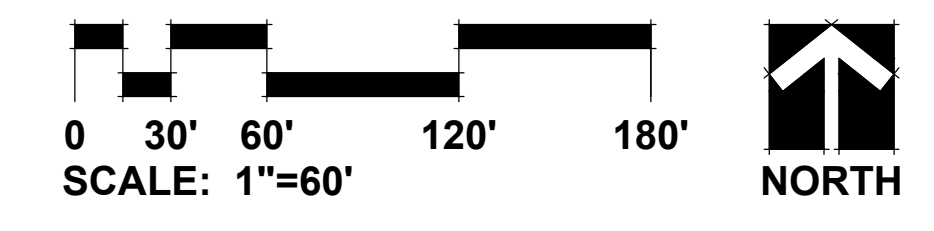


GRWA
GARY R. WEBER ASSOCIATES, INC.
LAND PLANNING
ECOLOGICAL CONSULTING
LANDSCAPE ARCHITECTURE
402 W. LIBERTY DRIVE
WHEATON, ILLINOIS 60187
PHONE: 630-668-7197
www.grwa.com


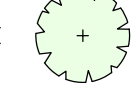
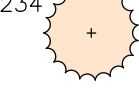
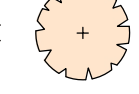


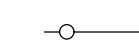
CLIENT
M/I HOMES
2135 CITY GATE LANE, SUITE 620
NAPERVILLE, IL 60563
ENGINEER
CAGE
2200 CABOT DRIVE
SUITE 325
LISLE, IL 60532

NORTHWOODS OF NAPERVILLE
NAPERVILLE, ILLINOIS
OVERALL TREE PRESERVATION PLAN

1 01.02.2024
REVISIONS
DATE 11.12.2024
PROJECT NO. MI24251
DRAWN A.JG
CHECKED DHS
SHEET NO.
7 OF 12



LEGEND

- 

EXISTING TREE TO BE PRESERVED
- 

ATTEMPT TO PRESERVE; POTENTIALLY IMPACTED TREE
- 

EXISTING TREE TO BE REMOVED
- 
PROTECTIVE FENCING



GARY R. WEBER
ASSOCIATES, INC.
LAND PLANNING
ECOLOGICAL CONSULTING
LANDSCAPE ARCHITECTURE
402 W. LIBERTY DRIVE
WHEATON, ILLINOIS 60187
PHONE: 630-668-7197
www.grwainc.com

CLIENT



M/I HOMES
2135 CITY GATE LANE, SUITE 620
NAPERVILLE, IL 60563

ENGINEER

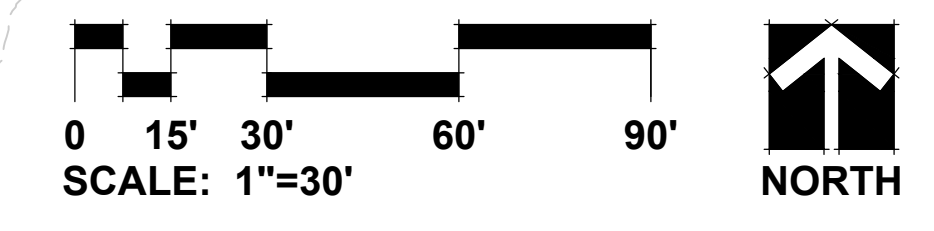
CAGE
2200 CABOT DRIVE
SUITE 325
LISLE, IL 60532

NORTHWOODS OF NAPERVILLE
NAPERVILLE, ILLINOIS
TREE PRESERVATION PLAN

1 01.02.2024


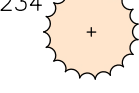

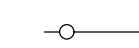
REVISIONS

DATE 11.12.2024
PROJECT NO. MI24251
DRAWN AJG
CHECKED DHS
SHEET NO.



MATCHLINE - SHEET 9

LEGEND

-  EXISTING TREE TO BE PRESERVED
-  ATTEMPT TO PRESERVE; POTENTIALLY IMPACTED TREE
-  EXISTING TREE TO BE REMOVED
-  PROTECTIVE FENCING



GARY R. WEBER
ASSOCIATES, INC.
LAND PLANNING
ECOLOGICAL CONSULTING
LANDSCAPE ARCHITECTURE
402 W. LIBERTY DRIVE
WHEATON, ILLINOIS 60187
PHONE: 630-668-7197
www.grwainc.com

CLIENT



M/I HOMES
2135 CITY GATE LANE, SUITE 620
NAPERVILLE, IL 60563

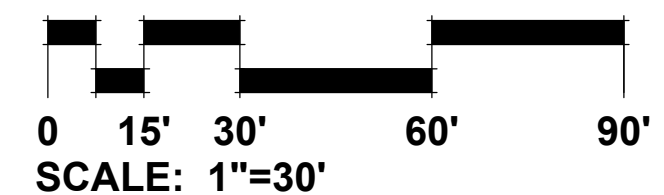
ENGINEER

CAGE
2200 CABOT DRIVE
SUITE 325
LISLE, IL 60532

NORTHWOODS OF NAPERVILLE
NAPERVILLE, ILLINOIS
TREE PRESERVATION PLAN

NO.	REVISIONS	DATE
1		01.02.2024

DATE 11.12.2024
PROJECT NO. MI24251
DRAWN AJG
CHECKED DHS
SHEET NO.



TAG NO.	SCIENTIFIC NAME	COMMON NAME	DBH (inches)	CONDITION	STRUCTURE	HEALTH	PROPOSED ACTION	NOTES
676	<i>Ulmus americana</i>	American Elm	8	4 - Fair/Poor	Unbalanced, Crown Lean, Broken Limb		Remove	Conflict with proposed development
677	<i>Acer saccharum</i>	Sugar Maple	14	4 - Fair/Poor	Unbalanced, Crown Lean		Remove	Conflict with proposed development
678	<i>Ulmus americana</i>	American Elm	14	4 - Fair/Poor	Crown Lean	Adventitious Growth, root girdle	Remove	Conflict with proposed development
679	<i>Ulmus americana</i>	American Elm	14	4 - Fair/Poor	Unbalanced, Crown Lean		Remove	Conflict with proposed development
680	<i>Acer saccharum</i>	Sugar Maple	4	2 - Good			Remove	Conflict with proposed development
681	<i>Ulmus americana</i>	American Elm	9	6 - Dead			Remove	Conflict with proposed development
682	<i>Quercus alba</i>	White Oak	22	2 - Good			Remove	Conflict with proposed development
683	<i>Pinus strobus</i>	White Pine	10	6 - Dead			Remove	Conflict with proposed development
684	<i>Acer ginnala</i>	Amur Maple	3/4	4 - Fair/Poor	Multi Leader		Remove	Conflict with proposed development
685	<i>Acer ginnala</i>	Amur Maple	4.3, 3.2	4 - Fair/Poor			Remove	Conflict with proposed development
686	<i>Acer ginnala</i>	Amur Maple	3/4	4 - Fair/Poor			Remove	Conflict with proposed development
687	<i>Acer ginnala</i>	Amur Maple	5.4, 3.4	4 - Fair/Poor			Remove	Conflict with proposed development
688	<i>Acer spp.</i>	Maple Cultivar	11	2 - Good			Remove	Conflict with proposed development
689	<i>Acer spp.</i>	Maple Cultivar	9	4 - Fair/Poor	Unbalanced	Trunk Damage, Peeling Bark	Remove	Conflict with proposed development
690	<i>Acer spp.</i>	Maple Cultivar	12	2 - Good			Remove	Conflict with proposed development
691	<i>Acer spp.</i>	Maple Cultivar	10	3 - Fair	Crowded		Remove	Conflict with proposed development
692	<i>Acer ginnala</i>	Amur Maple	6	4 - Fair/Poor		Cavity	Remove	Conflict with proposed development
693	<i>Pinus strobus</i>	White Pine	12	3 - Fair		Sparse foliage	Remove	Conflict with proposed development
694	<i>Pinus strobus</i>	White Pine	11	3 - Fair		Sparse foliage	Remove	Conflict with proposed development
695	<i>Carya ovata</i>	Shagbark Hickory	19	5 - Poor	Broken Leader		Remove	Conflict with proposed development
696	<i>Carya ovata</i>	Shagbark Hickory	15	3 - Fair	Crown Lean		Remove	Conflict with proposed development
697	<i>Acer saccharum</i>	Sugar Maple	8	3 - Fair	Crowded		Remove	Conflict with proposed development
698	<i>Acer saccharum</i>	Sugar Maple	8	3 - Fair	Unbalanced		Remove	Conflict with proposed development
699	<i>Pyrus calleryana</i>	Pear	8	5 - Poor			Remove	Conflict with proposed development
700	<i>Pyrus calleryana</i>	Pear	10	5 - Poor			Remove	Conflict with proposed development
701	<i>Ulmus rubra</i>	slippery elm	17	3 - Fair		20% dead wood	Remove	Impact to critical root zone
702	<i>Ulmus americana</i>	American Elm	10	3 - Fair			Remove	Conflict with proposed development
703	<i>Acer saccharum</i>	Sugar Maple	8	3 - Fair	V-shaped joint, Double Leader		Remove	Conflict with proposed development
704	<i>Acer saccharum</i>	Sugar Maple	8	2 - Good			Remove	Conflict with proposed development
705	<i>Quercus alba</i>	White Oak	16	2 - Good			Remove	Conflict with proposed development
706	<i>Acer saccharum</i>	Sugar Maple	16	5 - Poor		30% dead wood, Sparse foliage, Discoloration	Preserve	Poor condition, Within limits of Preservation Covenant
707	<i>Ostrya virginiana</i>	Ironwood	7	3 - Fair	Crown Lean		Preserve	No impact
708	<i>Ostrya virginiana</i>	Ironwood	5	4 - Fair/Poor		Cavity	Preserve	No impact
709	<i>Ostrya virginiana</i>	Ironwood	6	3 - Fair	Unbalanced		Preserve	No impact
710	<i>Ostrya virginiana</i>	Ironwood	4	2 - Good			Preserve	Potential impact, Within limits of Preservation Covenant
711	<i>Ostrya virginiana</i>	Ironwood	8	3 - Fair	Fused Leaders		Preserve	No impact
712	<i>Pinus strobus</i>	White Pine	14	3 - Fair	Unbalanced		Preserve	Potential impact, Within limits of Preservation Covenant
713	<i>Ostrya virginiana</i>	Ironwood	7	2 - Good			Preserve	No impact
714	<i>Quercus alba</i>	White Oak	20	2 - Good	Crown Lean		Preserve	No impact
715	<i>Acer saccharum</i>	Sugar Maple	9	2 - Good			Preserve	No impact
716	<i>Acer saccharum</i>	Sugar Maple	9	3 - Fair		Sparse foliage	Preserve	No impact
717	<i>Acer saccharum</i>	Sugar Maple	7	2 - Good			Preserve	No impact
718	<i>Quercus alba</i>	White Oak	31	3 - Fair	Crown Lean		Preserve	No impact
719	<i>Acer saccharum</i>	Sugar Maple	22	5 - Poor		Dead Leader, Cavity, Peeling Bark	Preserve	No impact
720	<i>Acer saccharum</i>	Sugar Maple	7	4 - Fair/Poor	Unbalanced, Crown Lean		Preserve	No impact
721	<i>Acer saccharum</i>	Sugar Maple	6	3 - Fair	Unbalanced		Preserve	No impact
722	<i>Quercus alba</i>	White Oak	27	2 - Good	Crown Lean		Preserve	No impact
723	<i>Quercus alba</i>	White Oak	23	2 - Good			Preserve	No impact
724	<i>Acer saccharum</i>	Sugar Maple	4	4 - Fair/Poor	Fused Leaders, Crowded	Dead Limbs	Preserve	No impact
725	<i>Acer saccharum</i>	Sugar Maple	7	2 - Good			Preserve	No impact
726	<i>Acer saccharum</i>	Sugar Maple	7	2 - Good			Preserve	No impact
727	Unknown	Unknown	7	6 - Dead			Preserve	No impact
728	<i>Acer saccharum</i>	Sugar Maple	8	2 - Good			Preserve	No impact
729	<i>Ostrya virginiana</i>	Ironwood	12	2 - Good			Preserve	No impact
730	<i>Quercus rubra</i>	Red Oak	50	3 - Fair		Tip die-back	Preserve	No impact
731	<i>Acer saccharum</i>	Sugar Maple	6	2 - Good			Preserve	No impact
732	<i>Acer saccharum</i>	Sugar Maple	7	2 - Good			Preserve	No impact
733	<i>Acer saccharum</i>	Sugar Maple	5	5 - Poor	Strong lean	Cavity, Trunk Damage	Preserve	No impact
734	<i>Ostrya virginiana</i>	Ironwood	8	2 - Good			Preserve	No impact
735	<i>Acer saccharum</i>	Sugar Maple	4	2 - Good			Preserve	No impact
736	<i>Acer saccharum</i>	Sugar Maple	7	3 - Fair	poor form		Preserve	No impact
737	<i>Acer saccharum</i>	Sugar Maple	11	2 - Good			Preserve	No impact
738	<i>Acer saccharum</i>	Sugar Maple	5	2 - Good			Preserve	No impact
739	<i>Acer saccharum</i>	Sugar Maple	8	2 - Good			Preserve	No impact
740	<i>Acer saccharum</i>	Sugar Maple	13	2 - Good			Preserve	No impact
741	<i>Ostrya virginiana</i>	Ironwood	4	2 - Good			Preserve	No impact
742	<i>Acer saccharum</i>	Sugar Maple	7	2 - Good			Preserve	No impact
743	<i>Acer saccharum</i>	Sugar Maple	6	2 - Good			Preserve	No impact
744	<i>Acer saccharum</i>	Sugar Maple	10	3 - Fair		30% dead wood	Preserve	No impact
745	<i>Acer saccharum</i>	Sugar Maple	6	3 - Fair		Sparse foliage	Preserve	Potential impact, Within limits of Preservation Covenant
746	<i>Acer saccharum</i>	Sugar Maple	11	2 - Good			Preserve	Potential impact, Within limits of Preservation Covenant
747	<i>Celtis occidentalis</i>	Hackberry	6	3 - Fair		Adventitious Growth	Preserve	Potential impact, Within limits of Preservation Covenant
748	Unknown	Unknown	9	6 - Dead			Preserve	Dead, Within limits of Preservation Covenant
749	<i>Acer saccharum</i>	Sugar Maple	8	2 - Good			Preserve	Potential impact, Within limits of Preservation Covenant
750	<i>Acer saccharum</i>	Sugar Maple	10	3 - Fair	Unbalanced		Preserve	Potential impact, Within limits of Preservation Covenant
751	<i>Ostrya virginiana</i>	Ironwood	5	2 - Good			Preserve	Potential impact, Within limits of Preservation Covenant
752	<i>Acer saccharum</i>	Sugar Maple	8	3 - Fair	Lean		Preserve	Potential impact, Within limits of Preservation Covenant
753	<i>Acer saccharum</i>	Sugar Maple	10	2 - Good			Preserve	No impact
754	<i>Acer saccharum</i>	Sugar Maple	6	2 - Good			Preserve	No impact
755	Unknown	Unknown	7	6 - Dead			Preserve	No impact
756	<i>Acer saccharum</i>	Sugar Maple	4	2 - Good			Preserve	No impact
757	<i>Acer saccharum</i>	Sugar Maple	6	2 - Good			Preserve	No impact
758	<i>Acer saccharum</i>	Sugar Maple	4	2 - Good			Preserve	No impact
759	<i>Acer saccharum</i>	Sugar Maple	5	2 - Good			Preserve	No impact
760	<i>Acer saccharum</i>	Sugar Maple	8	2 - Good			Preserve	No impact
761	<i>Acer saccharum</i>	Sugar Maple	7	2 - Good			Preserve	No impact
762	<i>Quercus alba</i>	White Oak	26	4 - Fair/Poor		30% dead wood, Tip die-back	Preserve	No impact
763	<i>Ulmus americana</i>	American Elm	10	2 - Good			Preserve	No impact
764	<i>Ulmus americana</i>	American Elm	8	3 - Fair	Strong lean		Preserve	No impact
765	<i>Ulmus americana</i>	American Elm	9	5 - Poor		50% dead wood, Hollow, Adventitious Growth	Preserve	No impact
766	<i>Acer saccharum</i>	Sugar Maple	5	2 - Good			Preserve	No impact
767	<i>Acer saccharum</i>	Sugar Maple	5	3 - Fair	Crowded		Preserve	No impact
768	<i>Quercus alba</i>	White Oak	32	2 - Good			Preserve	No impact
769	<i>Acer saccharum</i>	Sugar Maple	4	4 - Fair/Poor	poor form		Preserve	No impact
770	<i>Acer saccharum</i>	Sugar Maple	6	2 - Good			Preserve	No impact
771	<i>Acer saccharum</i>	Sugar Maple	4	3 - Fair	Unbalanced		Preserve	No impact
772	<i>Acer saccharum</i>	Sugar Maple	6	2 - Good			Preserve	No impact
773	<i>Acer saccharum</i>	Sugar Maple	8	2 - Good			Preserve	No impact
774	<i>Juglans nigra</i>	Black Walnut	25	2 - Good			Preserve	No impact
775	<i>Acer saccharum</i>	Sugar Maple	8	2 - Good			Preserve	No impact
776	<i>Acer saccharum</i>	Sugar Maple	6	3 - Fair	Lean		Preserve	No impact
777	<i>Acer saccharum</i>	Sugar Maple	8	3 - Fair	Crowded		Preserve	No impact
778	<i>Acer saccharum</i>	Sugar Maple	7	2 - Good			Preserve	No impact
779	<i>Acer saccharum</i>	Sugar Maple	4	2 - Good			Preserve	No impact
780	<i>Acer saccharum</i>	Sugar Maple	8	2 - Good			Preserve	No impact
781	<i>Acer saccharum</i>	Sugar Maple	7	2 - Good			Preserve	No impact
782	Unknown	Unknown	18	6 - Dead			Preserve	No impact
783	<i>Acer saccharum</i>	Sugar Maple	4	3 - Fair		Adventitious Growth	Preserve	No impact
784	<i>Acer saccharum</i>	Sugar Maple	8	2 - Good			Preserve	No impact
785	<i>Quercus alba</i>	White Oak	34	2 - Good			Preserve	No impact
786	<i>Acer saccharum</i>	Sugar Maple	5	2 - Good		Adventitious Growth	Preserve	No impact
787	<i>Ulmus americana</i>	American Elm	10	2 - Good			Preserve	No impact
788	<i>Ulmus americana</i>	American Elm	15	2 - Good			Preserve	No impact
789	<i>Prunus serotina</i>	Black Cherry	5	3 - Fair	Lean		Preserve	No impact
790	<i>Acer saccharum</i>	Sugar Maple	4	2 - Good			Preserve	No impact
791	<i>Acer saccharum</i>	Sugar Maple	6	2 - Good			Preserve	No impact
792	<i>Quercus alba</i>	White Oak	34	2 - Good			Remove	Impact to critical root zone
793	<i>Quercus alba</i>	White Oak	24	2 - Good			Preserve	High quality tree near proposed impacts
794	<i>Ulmus americana</i>	American Elm	11	2 - Good			Preserve	High quality tree near proposed impacts
795	<i>Acer saccharum</i>	Sugar Maple	4	2 - Good			Preserve	No impact
796	<i>Acer saccharum</i>	Sugar Maple	4	2 - Good			Preserve	No impact
797	<i>Quercus alba</i>	White Oak	33	3 - Fair	Crown Lean		Preserve	No impact
798	Unknown	Unknown	16	6 - Dead			Preserve	No impact
799	<i>Acer saccharum</i>	Silver Maple	6	2 - Good			Remove	Dead
800	<i>Quercus alba</i>	White Oak	17	3 - Fair	Crown Lean		Preserve	High quality tree near proposed impacts
801	<i>Acer saccharum</i>	Sugar Maple	5	2 - Good			Remove	Impact to critical root zone
802	<i>Acer saccharum</i>	Sugar Maple	4	4 - Fair/Poor	Lean, Unbalanced		Remove	Impact to critical root zone
803	<i>Quercus alba</i>	White Oak	19	2 - Good	Crown Lean		Remove	Impact to critical root zone
804	<i>Quercus alba</i>	White Oak	23	3 - Fair		Adventitious Growth	Remove	Impact to critical root zone
805	<i>Prunus serotina</i>	Black Cherry	8	3 - Fair	poor form		Remove	Impact to critical root zone
806	<i>Acer saccharum</i>	Sugar Maple	7	2 - Good			Remove	Impact to critical root zone
807	<i>Quercus alba</i>	White Oak	28	3 - Fair	Crown Lean		Preserve	High quality tree near proposed impacts

TAG NO.	SCIENTIFIC NAME	COMMON NAME	DBH (inches)	CONDITION	STRUCTURE	HEALTH	PROPOSED ACTION	NOTES
808	<i>Acer saccharum</i>	Sugar Maple	6	2 - Good			Preserve	No impact
809	<i>Ulmus americana</i>	American Elm	6	4 - Fair/Poor	Strong lean, Unbalanced		Preserve	No impact
810	<i>Acer saccharum</i>	Sugar Maple	7	1 - Good			Preserve	No impact
811	<i>Carya ovata</i>	Shagbark Hickory	24	4 - Fair/Poor	Strong lean		Preserve	No impact
812	<i>Acer saccharum</i>	Sugar Maple	9	2 - Good			Preserve	No impact
813	<i>Ulmus americana</i>	American Elm	9	6 - Dead			Remove	Dead
814	<i>Acer saccharum</i>	Sugar Maple	6	2 - Good			Preserve	Potential impact
815	<i>Acer saccharum</i>	Sugar Maple	7	5 - Poor	Broken Leader		Remove	Poor condition
816	<i>Acer saccharum</i>	Sugar Maple	7	4 - Fair/Poor	Crowded		Preserve	Potential impact
817	<i>Acer saccharum</i>	Sugar Maple	6	5 - Poor	Crowded, Broken Leader		Remove	Poor condition
818	<i>Ulmus americana</i>	American Elm	6	4 - Fair/Poor	Strong lean		Preserve	Potential impact
819	<i>Quercus alba</i>	White Oak	35	3 - Fair		Adventitious Growth, Tip die-back	Preserve	High quality tree near proposed impacts
820	<i>Quercus alba</i>	White Oak	22	2 - Good			Preserve	High quality tree near proposed impacts
821	<i>Quercus alba</i>	White Oak	18	2 - Good			Preserve	No impact
822	<i>Acer saccharum</i>	Sugar Maple	19	2 - Good			Preserve	No impact
823	<i>Carya ovata</i>	Shagbark Hickory	14	2 - Good			Preserve	No impact
824	<i>Acer saccharum</i>	Sugar Maple	5	2 - Good			Preserve	No impact
825	<i>Acer saccharum</i>	Sugar Maple	6	3 - Fair	Crowded		Preserve	No impact
826	<i>Ulmus americana</i>	American Elm	6	4 - Fair/Poor		Adventitious Growth, Sparse foliage	Preserve	No impact
827	<i>Prunus serotina</i>	Black Cherry	7	2 - Good			Preserve	Low quality species, Within limits of Preservation Covenant
828	<i>Quercus alba</i>	White Oak	23	2 - Good			Preserve	High quality tree near proposed impacts, Within limits of Preservation Covenant
829	<i>Prunus serotina</i>	Black Cherry	7	2 - Good			Remove	Low quality species
830	<i>Carya ovata</i>	Shagbark Hickory	19	2 - Good			Preserve	High quality tree near proposed impacts
831	<i>Acer saccharum</i>	Sugar Maple	8	2 - Good			Preserve	Potential impact
832	<i>Ulmus americana</i>	American Elm	7	2 - Good			Preserve	Potential impact, Within limits of Preservation Covenant
833	<i>Celtis occidentalis</i>	Hackberry	6	2 - Good			Preserve	No impact
834	<i>Celtis occidentalis</i>	Hackberry	6	2 - Good			Remove	Conflict with proposed development
835	<i>Juglans nigra</i>	Black Walnut	14	2 - Good			Remove	Conflict with proposed development
836	<i>Prunus serotina</i>	Black Cherry	11	4 - Fair/Poor		20% dead wood, Dead Limbs	Remove	Conflict with proposed development
837	<i>Quercus alba</i>	White Oak	14	2 - Good			Remove	Conflict with proposed development
838	<i>Juglans nigra</i>	Black Walnut	7	4 - Fair/Poor	U-shaped joint, Crown Lean		Remove	Conflict with proposed development
839	<i>Ulmus americana</i>	American Elm	9	2 - Good			Remove	Conflict with proposed development
840	<i>Acer saccharum</i>	Sugar Maple	6	2 - Good			Remove	Conflict with proposed development
841	<i>Quercus alba</i>	White Oak	28	2 - Good		Dead Limbs	Remove	Conflict with proposed development
842	<i>Ulmus americana</i>	American Elm	4	5 - Poor	Strong lean, Crown Lean		Remove	Conflict with proposed development
843	<i>Acer saccharum</i>	S						

TAG NO.	SCIENTIFIC NAME	COMMON NAME	DBH (inches)	CONDITION	STRUCTURE	HEALTH	PROPOSED ACTION	NOTES
2248	<i>Carya ovata</i>	Shagbark Hickory	14	2 - Good	Crown Lean		Remove	Impact to critical root zone
2247	<i>Ulmus americana</i>	American Elm	7	3 - Fair	Crown Lean	10% dead wood	Remove	No impact
2248	<i>Ulmus americana</i>	American Elm	6	3 - Fair	Crown Lean	20% dead wood	Preserve	No impact
2249	<i>Acer saccharum</i>	Sugar Maple	6	2 - Good			Preserve	No impact
2250	<i>Acer saccharum</i>	Sugar Maple	7	2 - Good	Unbalanced		Remove	Impact to critical root zone
2251	<i>Quercus alba</i>	White Oak	25	2 - Good	Unbalanced		Remove	Impact to critical root zone
2252	<i>Acer saccharum</i>	Sugar Maple	4	2 - Good	Unbalanced		Remove	Impact to critical root zone
2253	<i>Acer saccharum</i>	Sugar Maple	6	2 - Good	Unbalanced		Preserve	No impact
2254	<i>Acer saccharum</i>	Sugar Maple	6	2 - Good	Crown Lean		Preserve	No impact
2255	<i>Quercus alba</i>	White Oak	19	2 - Good	Crown Lean		Preserve	No impact
2256	<i>Quercus alba</i>	White Oak	27	2 - Good		10% dead wood	Remove	No impact
2257	<i>Quercus alba</i>	White Oak	34	2 - Good		10% dead wood	Remove	Impact to critical root zone
2258	<i>Ulmus americana</i>	American Elm	7	5 - Poor		>50% dead wood	Remove	Impact to critical root zone
2259	<i>Ulmus americana</i>	American Elm	8	4 - Fair/Poor	Crown Lean	20% dead wood	Preserve	No impact
2260	<i>Ulmus americana</i>	American Elm	7	4 - Fair/Poor	Lean	30% dead wood	Preserve	No impact
2261	<i>Acer saccharum</i>	Sugar Maple	4	2 - Good			Preserve	No impact
2262	<i>Ulmus americana</i>	American Elm	8	4 - Fair/Poor		40% dead wood, Trunk Scar	Remove	Impact to critical root zone
2263	Unknown	Unknown	8	6 - Dead			Preserve	No impact
2264	<i>Carya ovata</i>	Shagbark Hickory	27	2 - Good			Preserve	No impact
2265	<i>Ulmus americana</i>	American Elm	6	3 - Fair	Unbalanced	20% dead wood	Preserve	No impact
2266	<i>Carya ovata</i>	Shagbark Hickory	16	2 - Good	Lean		Remove	Impact to critical root zone
2267	<i>Ulmus americana</i>	American Elm	7	4 - Fair/Poor	Crown Lean	30% dead wood	Preserve	Potential impact
2268	<i>Carya ovata</i>	Shagbark Hickory	22	3 - Fair	Lean, Crown Lean		Remove	Impact to critical root zone
2269	<i>Ulmus americana</i>	American Elm	7	4 - Fair/Poor	Crown Lean	30% dead wood	Remove	Impact to critical root zone
2270	<i>Juglans nigra</i>	Black Walnut	9	4 - Fair/Poor	Crown Lean, Crowded	Vines	Remove	Impact to critical root zone
2271	<i>Ulmus americana</i>	American Elm	10	3 - Fair			Preserve	No impact
2272	<i>Ulmus americana</i>	American Elm	7	3 - Fair	Unbalanced		Preserve	No impact
2273	<i>Ulmus americana</i>	American Elm	7	4 - Fair/Poor	Lean, Crown Lean	20% dead wood	Preserve	No impact
2274	<i>Ulmus americana</i>	American Elm	6	5 - Poor	Lean	50% dead wood	Preserve	No impact
2275	<i>Ulmus americana</i>	American Elm	6	6 - Dead			Preserve	No impact
2276	<i>Ulmus americana</i>	American Elm	17	5 - Poor	Crown Lean	>50% dead wood	Remove	Conflict with proposed development
2277	<i>Carya ovata</i>	Shagbark Hickory	26	2 - Good		Fungus-Stem	Remove	Conflict with proposed development
2278	<i>Ulmus americana</i>	American Elm	8	4 - Fair/Poor	Crown Lean	30% dead wood	Remove	Impact to critical root zone
2279	<i>Ulmus americana</i>	American Elm	4	4 - Fair/Poor		40% dead wood	Preserve	No impact
2280	<i>Ulmus americana</i>	American Elm	4	4 - Fair/Poor	Unbalanced	30% dead wood	Preserve	No impact
2281	<i>Ulmus americana</i>	American Elm	12	3 - Fair	Crown Lean		Remove	Conflict with proposed development
2282	<i>Ulmus americana</i>	American Elm	8	3 - Fair		Girdling Root	Preserve	No impact
2283	<i>Acer saccharum</i>	Sugar Maple	10	3 - Fair		Trunk Scar	Preserve	No impact
2284	<i>Quercus rubra</i>	Red Oak	10	2 - Good	Lean		Preserve	No impact
2285	<i>Carya ovata</i>	Shagbark Hickory	19	2 - Good			Preserve	High quality tree near proposed impacts
2286	<i>Ulmus americana</i>	American Elm	7	3 - Fair	Crown Lean		Remove	Conflict with proposed development
2287	<i>Ulmus americana</i>	American Elm	10	3 - Fair	Lean		Remove	Conflict with proposed development
2288	<i>Quercus alba</i>	White Oak	19	2 - Good			Remove	Impact to critical root zone
2289	<i>Ostrya virginiana</i>	Ironwood	4	2 - Good			Remove	Impact to critical root zone
2290	<i>Ulmus americana</i>	American Elm	6	3 - Fair	Lean, Unbalanced		Remove	Impact to critical root zone
2291	<i>Quercus rubra</i>	Red Oak	11	2 - Good			Preserve	High quality tree near proposed impacts
2292	<i>Acer saccharum</i>	Sugar Maple	8	2 - Good	Lean		Preserve	High quality tree near proposed impacts
2293	<i>Acer saccharum</i>	Sugar Maple	8	2 - Good			Preserve	High quality tree near proposed impacts
2294	<i>Ulmus americana</i>	American Elm	18	3 - Fair	Unbalanced, Crown Lean	10% dead wood	Preserve	High quality tree near proposed impacts
2295	<i>Ulmus americana</i>	American Elm	11	2 - Good		10% dead wood	Preserve	High quality tree near proposed impacts
2296	<i>Ulmus americana</i>	American Elm	8	2 - Good	Crown Lean		Preserve	High quality tree near proposed impacts
2297	<i>Ulmus americana</i>	American Elm	13	6 - Dead			Remove	Dead
2298	<i>Ulmus americana</i>	American Elm	13	6 - Dead			Remove	Conflict with proposed development
2299	<i>Morus alba</i>	White Mulberry	4	3 - Fair	Lean		Remove	Impact to critical root zone
2300	<i>Morus alba</i>	White Mulberry	6	4 - Fair/Poor	Lean, Crown Lean, Crowded		Remove	Impact to critical root zone
2301	<i>Ulmus americana</i>	American Elm	6	4 - Fair/Poor	Lean, Crown Lean	10% dead wood	Preserve	No impact
2302	<i>Ulmus americana</i>	American Elm	11	3 - Fair	Unbalanced, Crown Lean		Preserve	No impact
2303	<i>Quercus rubra</i>	Red Oak	33	2 - Good			Preserve	No impact
2304	<i>Acer saccharum</i>	Sugar Maple	15	2 - Good			Preserve	No impact
2305	<i>Carya ovata</i>	Shagbark Hickory	16	2 - Good	Lean		Preserve	No impact
2306	<i>Ulmus americana</i>	American Elm	9	4 - Fair/Poor	Lean, Crown Lean	Vines	Preserve	No impact
2307	<i>Ulmus americana</i>	American Elm	8	6 - Dead			Preserve	No impact
2308	<i>Acer saccharum</i>	Sugar Maple	11	2 - Good	Lean		Preserve	Potential impact
2309	<i>Quercus rubra</i>	Red Oak	11	2 - Good	Lean		Preserve	Impact to critical root zone
2310	<i>Ulmus americana</i>	American Elm	7	2 - Good	Lean		Preserve	No impact
2311	Unknown	Unknown	9	6 - Dead			Preserve	No impact
2312	Unknown	Unknown	10	6 - Dead			Preserve	No impact
2313	<i>Morus alba</i>	White Mulberry	7	3 - Fair	Crown Lean		Remove	Low quality species
2314	<i>Ulmus americana</i>	American Elm	16	4 - Fair/Poor	Lean, Crown Lean		Remove	Impact to critical root zone
2315	<i>Ulmus americana</i>	American Elm	7	4 - Fair/Poor	Lean, Crown Lean, Crowded		Remove	Impact to critical root zone
2316	<i>Acer saccharum</i>	Sugar Maple	13	2 - Good			Preserve	Potential impact
2317	Unknown	Unknown	7	6 - Dead			Remove	Dead
2318	<i>Prunus serotina</i>	Black Cherry	6	5 - Poor	Lean, Crown Lean	50% dead wood	Remove	Poor condition
2319	<i>Quercus rubra</i>	Red Oak	29	3 - Fair		Cavity, Trunk Scar	Preserve	No impact
2320	<i>Quercus alba</i>	White Oak	38	2 - Good	Broken Limb		Preserve	Off-site
2321	<i>Acer saccharum</i>	Sugar Maple	8	3 - Fair	Lean, Unbalanced		Preserve	High quality tree near proposed impacts
2322	<i>Quercus rubra</i>	Red Oak	5	2 - Good		10% dead wood	Preserve	Off-site
2323	<i>Carya ovata</i>	Shagbark Hickory	9	4 - Fair/Poor	Lean, Crown Lean, Crowded		Preserve	Off-site
2324	<i>Ulmus americana</i>	American Elm	5	2 - Good	Lean		Preserve	Off-site
2325	<i>Prunus serotina</i>	Black Cherry	10	4 - Fair/Poor	Lean, Unbalanced, Crowded		Preserve	Off-site
2326	<i>Ulmus americana</i>	American Elm	12	4 - Fair/Poor	Lean, Unbalanced	Trunk Damage	Preserve	Off-site
2327	<i>Ulmus americana</i>	American Elm	11	4 - Fair/Poor	Lean, Crown Lean, Crowded		Remove	Impact to critical root zone
2328	<i>Acer saccharum</i>	Sugar Maple	14	4 - Fair/Poor	Unbalanced, Crowded	Trunk Scar	Remove	Impact to critical root zone
2329	<i>Quercus alba</i>	White Oak	38	2 - Good	Broken Limb	10% dead wood	Preserve	High quality tree near proposed impacts
2330	<i>Ulmus americana</i>	American Elm	9	4 - Fair/Poor	Lean, Crown Lean, Crowded		Remove	Impact to critical root zone
2331	<i>Quercus rubra</i>	Red Oak	18	2 - Good	Unbalanced		Preserve	Off-site
2332	<i>Quercus rubra</i>	Red Oak	10	2 - Good	Unbalanced		Preserve	Off-site
2333	<i>Quercus rubra</i>	Red Oak	13	2 - Good			Preserve	Off-site
2334	<i>Quercus rubra</i>	Red Oak	19	2 - Good			Preserve	Off-site
2335	<i>Quercus rubra</i>	Red Oak	20	2 - Good	Lean	Girdling Root	Preserve	Off-site
2336	<i>Quercus rubra</i>	Red Oak	14	2 - Good			Preserve	Off-site
2337	<i>Quercus rubra</i>	Red Oak	13	2 - Good	Unbalanced		Preserve	Off-site
2338	<i>Carya ovata</i>	Shagbark Hickory	9	2 - Good	Lean		Preserve	Off-site
2339	<i>Quercus rubra</i>	Red Oak	13	2 - Good	Lean		Preserve	Off-site
2340	<i>Quercus rubra</i>	Red Oak	16	2 - Good			Preserve	Off-site
2341	<i>Ulmus americana</i>	American Elm	8	2 - Good			Preserve	Off-site
2342	<i>Quercus rubra</i>	Red Oak	20	2 - Good	Lean, Crown Lean		Preserve	Off-site
2343	<i>Quercus rubra</i>	Red Oak	10	2 - Good	Unbalanced		Preserve	Off-site
2344	<i>Fraxinus spp.</i>	Ash	12	5 - Poor	V-shaped joint, Double Leader, Split Risk	>50% dead wood, Dead Leader	Remove	Impact to critical root zone
2345	<i>Ulmus americana</i>	American Elm	6	3 - Fair	Lean, Unbalanced		Preserve	Potential impact
2346	<i>Acer saccharum</i>	Sugar Maple	6	3 - Fair		Trunk Scar	Preserve	Off-site
2347	<i>Ulmus americana</i>	American Elm	4	4 - Fair/Poor	Crown Lean, Crowded	Growing in Fence	Remove	Poor condition
2348	<i>Morus alba</i>	White Mulberry	10	4 - Fair/Poor	Lean, Crown Lean	Trunk Damage, Trunk Scar	Remove	Impact to critical root zone
2349	<i>Quercus alba</i>	White Oak	18	6 - Dead			Remove	Dead
2350	<i>Quercus alba</i>	White Oak	16	2 - Good	Lean		Preserve	High quality tree near proposed impacts
2351	<i>Quercus alba</i>	White Oak	17	2 - Good	Lean		Preserve	High quality tree near proposed impacts
2352	<i>Acer saccharum</i>	Sugar Maple	6	2 - Good			Preserve	High quality tree near proposed impacts
2353	<i>Quercus alba</i>	White Oak	17	2 - Good	Unbalanced		Preserve	High quality tree near proposed impacts
2354	<i>Quercus alba</i>	White Oak	21	6 - Dead			Remove	Dead
2355	<i>Acer saccharum</i>	Sugar Maple	10	2 - Good	Lean		Preserve	High quality tree near proposed impacts
2356	<i>Acer saccharum</i>	Sugar Maple	4	2 - Good	Unbalanced		Preserve	High quality tree near proposed impacts
2357	<i>Quercus alba</i>	White Oak	17	6 - Dead			Remove	Dead
2358	<i>Acer saccharum</i>	Sugar Maple	6	2 - Good	Lean, Unbalanced		Preserve	High quality tree near proposed impacts
2359	<i>Quercus alba</i>	White Oak	24	2 - Good	Lean		Preserve	High quality tree near proposed impacts
2360	<i>Acer saccharum</i>	Sugar Maple	4	2 - Good	Crown Lean		Preserve	High quality tree near proposed impacts
2361	<i>Acer saccharum</i>	Sugar Maple	7	2 - Good			Remove	Impact to critical root zone
2362	<i>Quercus alba</i>	White Oak	14	2 - Good	Lean		Preserve	High quality tree near proposed impacts
2363	<i>Quercus alba</i>	White Oak	23	2 - Good			Remove	Impact to critical root zone
2364	<i>Acer saccharum</i>	Sugar Maple	7	2 - Good	Unbalanced		Remove	Impact to critical root zone
2365	<i>Quercus alba</i>	White Oak	28	2 - Good	U-shaped joint, Double Leader		Preserve	High quality tree near proposed impacts
2366	<i>Quercus alba</i>	White Oak	26	3 - Fair	Lean, Crown Lean	10% dead wood	Preserve	Off-site
2367	<i>Carya ovata</i>	Shagbark Hickory	10	2 - Good			Preserve	Off-site
2368	<i>Quercus rubra</i>	Red Oak	15	2 - Good		10% dead wood	Preserve	Off-site
2369	<i>Ulmus americana</i>	American Elm	11	3 - Fair	Unbalanced		Preserve	Off-site
2370	<i>Tilia americana</i>	American Basswood	9	3 - Fair	Unbalanced, Crowded		Preserve	Off-site
2371	<i>Quercus macrocarpa</i>	Bur Oak	34	2 - Good	Crown Lean		Preserve	Off-site
2372	<i>Ulmus americana</i>	American Elm	4	3 - Fair			Preserve	Off-site
2373	<i>Quercus alba</i>	White Oak	26	2 - Good	Crown Lean		Preserve	Off-site
2374	<i>Acer saccharum</i>	Sugar Maple	5	2 - Good	Unbalanced		Preserve	High quality tree near proposed impacts
2375	<i>Acer saccharum</i>	Sugar Maple	6	2 - Good	Lean, Unbalanced		Remove	Impact to critical root zone
2376	<i>Acer saccharum</i>	Sugar Maple	4	2 - Good			Remove	Impact to critical root zone
2377	<i>Quercus alba</i>	White Oak	26	2 - Good	Crown Lean		Preserve	High quality tree near proposed impacts
2378	<i>Acer saccharum</i>	Sugar Maple	4	2 - Good	Lean		Remove	Impact to critical root zone
2379	<i>Quercus alba</i>	White Oak	28	2 - Good			Remove	Conflict with proposed development

TAG NO.	SCIENTIFIC NAME	COMMON NAME	DBH (inches)	CONDITION	STRUCTURE	HEALTH	PROPOSED ACTION	NOTES
2380	<i>Quercus alba</i>	White Oak	20	2 - Good	Crown Lean		Remove	Conflict with proposed development
2381	<i>Acer saccharum</i>	Sugar Maple	6	3 - Fair	Unbalanced	Trunk Scar	Remove	Conflict with proposed development
2382	<i>Ulmus americana</i>	American Elm	6	3 - Fair	Unbalanced, Crown Lean		Remove	Impact to critical root zone
2383	<i>Acer saccharum</i>	Sugar Maple	5	2 - Good			Remove	Impact to critical root zone
2384	<i>Pinus strobus</i>	White Pine	16	50 - 3 - Fair	Lean, Unbalanced		Remove	Conflict with proposed development
2385	<i>Pinus strobus</i>	White Pine	14	50 - 3 - Fair	Lean, Unbalanced		Remove	Conflict with proposed development
2386	<i>Pinus strobus</i>	White Pine	11	50 - 3 - Fair	Lean, Unbalanced		Remove	Conflict with proposed development
2387	<i>Pinus strobus</i>	White Pine	11	40 - 3 - Fair	Lean, Unbalanced		Remove	Conflict with proposed development
2388	<i>Quercus alba</i>	White Oak	33	2 - Good	Lean, Crown Lean		Remove	Conflict with proposed development
2389	<i>Quercus alba</i>	White Oak	18	6 - Dead			Remove	Conflict with proposed development
2390	<i>Quercus alba</i>	White Oak	22	2 - Good			Remove	Conflict with proposed development
2391	<i>Quercus alba</i>	White Oak	24	2 - Good	Lean		Remove	Conflict with proposed development
2392	<i>Quercus alba</i>	White Oak	24	2 - Good			Remove	Conflict with proposed development
2393	<i>Quercus alba</i>	White Oak	25	2 - Good	Crown Lean		Remove	Conflict with proposed development
2394	<i>Acer saccharum</i>	Sugar Maple	6	2 - Good	Unbalanced		Remove	Conflict with proposed development
2395	<i>Acer saccharum</i>	Sugar Maple	5	2 - Good	Lean, Unbalanced		Remove	Conflict with proposed development
2396	<i>Acer saccharum</i>	Sugar Maple	7	2 - Good			Remove	Conflict with proposed development
2397	<i>Quercus alba</i>	White Oak	21	2 - Good	Lean, Crown Lean		Remove	Conflict with proposed development
2398	<i>Quercus alba</i>	White Oak	17	2 - Good			Remove	Conflict with proposed development
2399	<i>Quercus alba</i>	White Oak	17	2 - Good			Remove	Conflict with proposed development
2400	<i>Quercus alba</i>	White Oak	17	2 - Good	Lean, Crown Lean		Remove	Conflict with proposed development
2401	<i>Quercus alba</i>	White Oak	18	5 - Poor	Lean, Crown Lean	>50% dead wood	Preserve	No impact
2402	<i>Quercus alba</i>	White Oak	17	3 - Fair	Unbalanced, Crown Lean	30% dead wood	Preserve	High quality tree near proposed impacts
2403	<i>Quercus alba</i>	White Oak	17	2 - Good	Lean, Crown Lean	10% dead wood	Preserve	Off-site
2404	<i>Ulmus americana</i>	American Elm	6	3 - Fair	Lean, Unbalanced		Preserve	

TAG NO.	SCIENTIFIC NAME	COMMON NAME	DBH (inches)	CONDITION	STRUCTURE	HEALTH	PROPOSED ACTION	NOTES
2514	<i>Acer saccharum</i>	Sugar Maple	4.2	Good	Crowded		Remove	Conflict with proposed development
2515	<i>Acer saccharum</i>	Sugar Maple	7.3	Good	Crown Lean, Crowded		Remove	Conflict with proposed development
2516	<i>Carya ovata</i>	Shagbark Hickory	21.2	Good			Remove	Conflict with proposed development
2517	<i>Acer saccharum</i>	Sugar Maple	6.2	Good	Unbalanced		Remove	Conflict with proposed development
2518	<i>Acer saccharum</i>	Sugar Maple	4.4	Fair/Poor	Lean, Unbalanced	Trunk Scar, Sparse foliage	Remove	Conflict with proposed development
2519	<i>Acer saccharum</i>	Sugar Maple	5.2	Good			Remove	Conflict with proposed development
2520	<i>Acer saccharum</i>	Sugar Maple	7.2	Good	Unbalanced		Remove	Conflict with proposed development
2521	<i>Prunus serotina</i>	Black Cherry	8.3	Fair	Lean		Remove	Conflict with proposed development
2522	<i>Acer saccharum</i>	Sugar Maple	6.3	Fair	Crown Lean		Remove	Conflict with proposed development
2523	<i>Quercus rubra</i>	Red Oak	7.2	Good	Lean		Remove	Conflict with proposed development
2524	<i>Quercus rubra</i>	Red Oak	12.2	Good	Unbalanced		Remove	Conflict with proposed development
2525	<i>Acer saccharum</i>	Sugar Maple	6.2	Good			Remove	Conflict with proposed development
2526	<i>Acer saccharum</i>	Sugar Maple	4.2	Good	Unbalanced		Remove	Impact to critical root zone
2527	<i>Acer saccharum</i>	Sugar Maple	6.2	Good	Unbalanced		Preserve	No impact
2528	<i>Acer saccharum</i>	Sugar Maple	10.2	Good	Unbalanced		Preserve	High quality tree near proposed impacts
2529	<i>Acer saccharum</i>	Sugar Maple	4.2	Good			Preserve	Off-site
2530	<i>Acer saccharum</i>	Sugar Maple	6.5	Poor	Broken Leader		Preserve	Off-site
2531	<i>Ulmus americana</i>	American Elm	7.3	Fair	Crown Lean, Broken Limb		Preserve	Off-site
2532	<i>Quercus alba</i>	White Oak	3.2	Good			Preserve	Off-site
2533	<i>Ulmus americana</i>	American Elm	7.3	Fair	Lean	Trunk Scar	Preserve	Off-site
2534	<i>Ulmus americana</i>	American Elm	11.3	Fair	Unbalanced		Preserve	Off-site
2535	<i>Ulmus americana</i>	American Elm	4.3	Fair	Lean, Crown Lean		Preserve	Off-site
2536	<i>Ulmus americana</i>	American Elm	7.3	Fair	Crown Lean		Preserve	Off-site
2537	<i>Prunus serotina</i>	Black Cherry	7.3	Fair	Crown Lean, Crowded		Preserve	Off-site
2538	<i>Quercus alba</i>	White Oak	38.2	Good	Lean, Crown Lean	10% dead wood	Preserve	Off-site
2539	<i>Quercus alba</i>	White Oak	27.6	Dead			Preserve	Off-site
2540	<i>Quercus alba</i>	White Oak	30.2	Good			Preserve	Off-site
2541	<i>Carya ovata</i>	Shagbark Hickory	30.5	Poor		40% dead wood, Dead Limbs, Cavity	Preserve	Off-site
2542	<i>Prunus serotina</i>	Black Cherry	10.3	Fair	Unbalanced		Preserve	Off-site
2543	<i>Acer saccharum</i>	Sugar Maple	8.2	Good	Unbalanced		Preserve	Off-site
2544	<i>Ulmus americana</i>	American Elm	11.4	Fair/Poor	Lean, Crown Lean, Crowded	Vines	Preserve	Off-site
2545	<i>Quercus alba</i>	White Oak	28.4	Fair/Poor	Lean, Crown Lean	30% dead wood, Cavity	Preserve	Off-site
2546	<i>Quercus alba</i>	White Oak	28.2	Good		30% dead wood	Preserve	Off-site
2547	<i>Quercus alba</i>	White Oak	28.3	Fair	Strong lean	30% dead wood	Preserve	Off-site
2548	<i>Quercus alba</i>	White Oak	28.6	Dead			Preserve	Off-site
2549	<i>Ulmus americana</i>	American Elm	6.3	Fair	Lean, Crown Lean		Preserve	Off-site
2550	<i>Ulmus americana</i>	American Elm	10.3	Fair	Crown Lean		Preserve	Off-site
2551	<i>Ulmus americana</i>	American Elm	11.3	Fair	Lean		Preserve	Off-site
2552	<i>Ulmus americana</i>	American Elm	5.5	Poor	Lean, Crown Lean	>50% dead wood	Preserve	Off-site
2553	<i>Prunus serotina</i>	Black Cherry	9.3	Fair	Unbalanced, Crown Lean		Preserve	Off-site
2554	<i>Ulmus americana</i>	American Elm	14.4	Fair/Poor	Lean, Crown Lean, Crowded		Preserve	Off-site
2555	<i>Quercus alba</i>	White Oak	37.2	Good	Lean		Preserve	Off-site
2556	<i>Prunus serotina</i>	Black Cherry	8.3	Fair	Lean, Crown Lean		Preserve	Off-site
2557	<i>Quercus alba</i>	White Oak	27.2	Good			Preserve	Off-site
2558	<i>Quercus alba</i>	White Oak	35.4	Fair/Poor	Lean	40% dead wood, Dead Limbs	Preserve	Off-site
2559	<i>Carya ovata</i>	Shagbark Hickory	8.3	Fair	Lean, Crown Lean		Preserve	Off-site
2560	<i>Carya ovata</i>	Shagbark Hickory	17.2	Good	Lean, Crown Lean		Preserve	Off-site
2561	<i>Ulmus americana</i>	American Elm	14.3	Fair	Lean, Crown Lean		Preserve	Off-site
2562	<i>Ulmus americana</i>	American Elm	22.3	Fair	Unbalanced, Crown Lean		Preserve	Off-site
2563	<i>Morus alba</i>	White Mulberry	5.4	Fair/Poor	Lean, Crown Lean, Crowded	Trunk Scar	Remove	Impact to critical root zone
2564	<i>Juglans nigra</i>	Black Walnut	13.2	Good	Unbalanced		Remove	Impact to critical root zone
2565	<i>Morus alba</i>	White Mulberry	8.6	Dead			Remove	Dead
2566	<i>Ulmus americana</i>	American Elm	5.5	Poor	Lean, Crown Lean	Cavity, Vines	Remove	Poor condition
2567	<i>Ulmus americana</i>	American Elm	16.3	Fair	Lean, Crown Lean		Preserve	Potential impact
2568	<i>Prunus serotina</i>	Black Cherry	10.3	Fair	Lean, Crown Lean		Preserve	Off-site
2569	<i>Prunus serotina</i>	Black Cherry	6.5	Poor	Strong lean		Preserve	Off-site
2570	<i>Quercus alba</i>	White Oak	30.2	Good	Lean		Preserve	Off-site
2571	<i>Morus alba</i>	White Mulberry	12.4, 4.5	Poor	V-shaped joint, Multi Leader, Split Risk	Trunk Damage	Remove	Impact to critical root zone
2572	<i>Carya ovata</i>	Shagbark Hickory	4.3	Fair	Lean, Crown Lean, Crowded		Preserve	High quality tree near proposed impacts
2573	<i>Carya ovata</i>	Shagbark Hickory	5.3	Fair	Lean, Crown Lean		Preserve	High quality tree near proposed impacts
2574	<i>Carya ovata</i>	Shagbark Hickory	7.6	Dead			Remove	Impact to critical root zone
2575	<i>Carya ovata</i>	Shagbark Hickory	6.6	Dead			Remove	Impact to critical root zone
2576	<i>Carya ovata</i>	Shagbark Hickory	7.3	Fair	Lean, Crown Lean	Vines	Remove	Impact to critical root zone
2577	<i>Carya ovata</i>	Shagbark Hickory	9.3	Fair	Lean, Crown Lean		Preserve	High quality tree near proposed impacts
2578	<i>Ulmus americana</i>	American Elm	6.3	Fair	Crown Lean		Remove	Conflict with proposed development
2579	<i>Ulmus americana</i>	American Elm	8.3	Fair	Lean, Crown Lean	10% dead wood	Remove	Conflict with proposed development
2580	<i>Juglans nigra</i>	Black Walnut	13.3	Fair	Unbalanced		Remove	Conflict with proposed development
2581	<i>Fraxinus spp.</i>	Ash	6.6	Dead			Remove	Conflict with proposed development
2582	<i>Juglans nigra</i>	Black Walnut	12.3	Fair	Unbalanced	10% dead wood	Remove	Impact to critical root zone
2583	<i>Juglans nigra</i>	Black Walnut	9.3	Fair	Lean, Crown Lean		Remove	Impact to critical root zone
2584	<i>Juglans nigra</i>	Black Walnut	16.2	Good	Lean		Remove	Impact to critical root zone
2585	<i>Fraxinus spp.</i>	Ash	11.6	Dead			Remove	Conflict with proposed development
2586	<i>Carya ovata</i>	Shagbark Hickory	4.5	Poor	Lean	>50% dead wood	Remove	Conflict with proposed development
2587	<i>Juglans nigra</i>	Black Walnut	10.3	Fair	Lean, Unbalanced	10% dead wood	Remove	Conflict with proposed development
2588	<i>Ulmus americana</i>	American Elm	7.4	Fair/Poor	Lean, Crown Lean, Crowded	10% dead wood	Remove	Conflict with proposed development
2589	<i>Ulmus rubra</i>	Slippery Elm	4.4	Fair/Poor	Lean, Crown Lean, Crowded		Remove	Conflict with proposed development
2590	<i>Ulmus rubra</i>	Slippery Elm	5.3	Fair	Lean, Crown Lean		Remove	Conflict with proposed development
2591	<i>Juglans nigra</i>	Black Walnut	12.3	Fair	Lean		Remove	Conflict with proposed development
2592	<i>Ulmus americana</i>	American Elm	4.5	Poor		>50% dead wood, Vines	Remove	Conflict with proposed development
2593	<i>Carya ovata</i>	Shagbark Hickory	4.3	Fair		Trunk Scar	Remove	Conflict with proposed development
2594	<i>Juglans nigra</i>	Black Walnut	14.2	Good	Lean		Remove	Conflict with proposed development
2595	<i>Carya ovata</i>	Shagbark Hickory	5.3	Fair	Lean, Crown Lean		Preserve	High quality tree near proposed impacts
2596	<i>Carya ovata</i>	Shagbark Hickory	4.3	Fair	Lean, Crown Lean		Preserve	High quality tree near proposed impacts
2597	<i>Carya ovata</i>	Shagbark Hickory	4.3	Fair	Unbalanced, Crowded		Preserve	High quality tree near proposed impacts
2598	<i>Ulmus americana</i>	American Elm	9.8, 5	Poor	V-shaped joint, Double Leader, Split Risk	Growing in Fence	Preserve	Off-site
2599	<i>Carya ovata</i>	Shagbark Hickory	11.3	Fair	Lean		Preserve	Off-site
2600	<i>Carya ovata</i>	Shagbark Hickory	9.2	Good			Preserve	Off-site
2601	<i>Carya ovata</i>	Shagbark Hickory	5.3	Fair	Lean, Crown Lean		Preserve	Off-site
2602	<i>Carya ovata</i>	Shagbark Hickory	13.2	Good	Lean		Preserve	Off-site
2603	<i>Carya ovata</i>	Shagbark Hickory	10.3	Fair	Lean	Trunk Scar	Preserve	Off-site
2604	<i>Carya ovata</i>	Shagbark Hickory	11.2	Good	Lean		Preserve	Off-site
2605	<i>Carya ovata</i>	Shagbark Hickory	13.2	Good	Lean		Preserve	Off-site
2606	<i>Quercus rubra</i>	Red Oak	7.2	Good	Crown Lean		Preserve	Off-site
2607	<i>Ulmus americana</i>	American Elm	8.2	Good			Preserve	Off-site
2608	<i>Quercus rubra</i>	Red Oak	27.2	Good			Preserve	Off-site
2609	<i>Quercus rubra</i>	Red Oak	9.2	Good	Lean		Preserve	Off-site
2610	<i>Carya ovata</i>	Shagbark Hickory	15.2	Good	Lean		Preserve	Off-site
2611	<i>Carya ovata</i>	Shagbark Hickory	12.2	Good	Unbalanced		Preserve	Off-site
2612	<i>Carya ovata</i>	Shagbark Hickory	15.2	Good	Unbalanced		Preserve	Off-site
2613	<i>Quercus rubra</i>	Red Oak	32.4	Fair/Poor		Trunk Scar	Preserve	Off-site
2614	<i>Ulmus americana</i>	American Elm	11.3	Fair	Unbalanced, Crown Lean		Preserve	Off-site
2615	<i>Carya ovata</i>	Shagbark Hickory	6.2	Good		Vines	Preserve	Off-site
2616	<i>Carya ovata</i>	Shagbark Hickory	12.3	Fair	Lean	Trunk Scar	Preserve	Off-site
2617	<i>Ulmus americana</i>	American Elm	28.3	Fair		Trunk Scar	Preserve	Off-site
2618	<i>Carya ovata</i>	Shagbark Hickory	7.2	Good	Lean		Preserve	Off-site
2619	<i>Acer negundo</i>	Box Elder	7.5	Poor	Strong lean, Broken Leader		Remove	Conflict with proposed development
2620	<i>Ulmus americana</i>	American Elm	21.6	Dead			Remove	Conflict with proposed development
2621	<i>Carya ovata</i>	Shagbark Hickory	5.6	Dead			Remove	Conflict with proposed development
2622	<i>Pinus strobus</i>	Scots Pine	16.50	Good	Unbalanced		Remove	Conflict with proposed development
2623	<i>Carya ovata</i>	Shagbark Hickory	4.6	Dead			Remove	Conflict with proposed development
2624	<i>Acer negundo</i>	Box Elder	25.6	Dead			Remove	Impact to critical root zone
2625	<i>Carya ovata</i>	Shagbark Hickory	8.3	Fair	Lean, Crown Lean		Remove	Impact to critical root zone
2626	<i>Ulmus americana</i>	American Elm	13.2	Good			Preserve	High quality tree near proposed impacts
2627	<i>Ulmus americana</i>	American Elm	5.5	Poor	Strong lean, Crown Lean		Remove	Impact to critical root zone
2628	<i>Ulmus americana</i>	American Elm	5.5	Poor	Strong lean, Crown Lean		Remove	Impact to critical root zone
2629	<i>Juglans nigra</i>	Black Walnut	18.2	Good	Lean		Remove	Impact to critical root zone
2630	<i>Carya ovata</i>	Shagbark Hickory	4.3	Fair	Lean, Crown Lean		Remove	Impact to critical root zone
2631	<i>Ulmus americana</i>	American Elm	12.3	Fair	Lean, Crown Lean		Remove	Impact to critical root zone
2632	<i>Ulmus americana</i>	American Elm	7.4	Fair/Poor	Lean, Crown Lean, Crowded		Remove	Impact to critical root zone
2633	<i>Ulmus americana</i>	American Elm	5.4	Fair/Poor	Lean, Crown Lean, Crowded	20% dead wood	Remove	Impact to critical root zone
2634	<i>Ulmus americana</i>	American Elm	28.2	Good			Preserve	High quality tree near proposed impacts
2635	<i>Ulmus americana</i>	American Elm	9.5	Poor	Lean, Broken Leader	Vines	Remove	Poor condition
2636	<i>Tilia americana</i>	American Basswood	17.15, 7.5	Poor	Multi Leader, Broken Leader	Growing in Fence	Remove	Poor condition
2637	<i>Pinus sylvestris</i>	Scots Pine	13.45	Fair	Lean, Unbalanced		Remove	Conflict with proposed development
2638	<i>Ulmus pumila</i>	Siberian Elm	29.3	Fair			Remove	Conflict with proposed development
2639	<i>Ulmus americana</i>	American Elm	5.3	Fair	Crown Lean, Crowded		Remove	Conflict with proposed development
2640	<i>Ulmus rubra</i>	Slippery Elm	6.3	Fair			Remove	Impact to critical root zone
2641	<i>Crateagus spp.</i>	Hawthorn	7.3	Fair	Crown Lean		Remove	Impact to critical root zone
2642	<i>Ulmus americana</i>	American Elm	6.3	Fair	Unbalanced, Crown Lean		Remove	Impact to critical root zone
2643	<i>Ulmus americana</i>	American Elm	10.5	Poor	Strong lean	Dead Leaning On	Remove	Poor condition
2644	<i>Fraxinus spp.</i>	Ash	13.6	Dead			Remove	Dead
2645	<i>Juglans nigra</i>	Black Walnut	28.4	Fair/Poor		Dead Limbs, Trunk Scar	Remove	Poor condition
2646	<i>Juglans nigra</i>	Black Walnut	28.5	Poor		>50% dead wood, Dead Limbs, Cavity	Remove	Poor condition
2647	<i>Tilia americana</i>	American Basswood	12.2	Good			Preserve	No impact

TAG NO.	SCIENTIFIC NAME	COMMON NAME	DBH (inches)	CONDITION	STRUCTURE	HEALTH	PROPOSED ACTION	NOTES
2648	<i>Morus alba</i>	White Mulberry	18.10, 8.9	Poor	Multi Leader, Split Risk, Split Leaders	Fungus-Stem, Trunk Damage	Remove	Conflict with proposed development
2649	<i>Ulmus americana</i>	American Elm	17.1	Poor	Lean, Crown Lean	Dead Leaning On	Remove	Impact to critical root zone
2650	<i>Carya ovata</i>	Shagbark Hickory	4.3	Fair			Preserve	No impact
2651	<i>Juglans nigra</i>	Black Walnut	26.2	Good			Preserve	Off-site
2652	<i>Fagus grandifolia</i>	American Beech	20.4	Fair/Poor	Fused Leaders	Dead Leader, Trunk Scar	Preserve	Off-site
2653	<i>Juglans nigra</i>	Black Walnut	17.2	Good	Unbalanced		Preserve	Off-site
2654	<i>Ulmus americana</i>	American Elm	15.3	Fair	Lean, Crown Lean		Remove	Impact to critical root zone
2655	<i>Ulmus americana</i>	American Elm	8.3	Fair	Crown Lean	10% dead wood	Remove	Impact to critical root zone
2656	<i>Quercus rubra</i>	Red Oak	21.2	Good			Remove	Conflict with proposed development
2657	<i>Celtis occidentalis</i>	Hackberry	13.2	Good	Crown Lean		Preserve	Off-site
2658	<i>Ulmus americana</i>	American Elm	18.3	Fair	Lean, Crown Lean		Preserve	Potential impact
2659	<i>Tilia americana</i>	American Basswood	6.4	Fair/Poor	Lean, Crown Lean	Trunk Scar	Remove	Poor condition
2660	<i>Tilia americana</i>	American Basswood	5.3	Fair	Unbalanced, Crown Lean		Preserve	Potential impact
2661	<i>Tilia americana</i>	American Basswood	7.4	Fair/Poor	Lean, Crown Lean	Trunk Scar	Remove	Poor condition
2662	<i>Tilia americana</i>	American Basswood	11.3	Fair	Lean, Unbalanced		Remove	Potential impact
2663	<i>Tilia americana</i>	American Basswood	10.3	Fair	Lean, Unbalanced		Preserve	Potential impact
2664	<i>Tilia americana</i>	American Basswood	13.2	Good			Preserve	Potential impact
2665	<i>Tilia americana</i>	American Basswood	11.4	Fair/Poor	Unbalanced, Crown Lean	Trunk Scar	Remove	Poor condition
2666	<i>Tilia americana</i>	American Basswood	4.3	Fair	Unbalanced, Crown Lean		Preserve	Potential impact
2667	<i>Ulmus americana</i>	American Elm	8.3	Fair	Lean, Crown Lean		Remove	Impact to critical root zone
2668	<i>Carya ovata</i>	Shagbark Hickory	6.2	Good			Remove	Conflict with proposed development
2669	<i>Carya ovata</i>	Shagbark Hickory	4.4	Fair/Poor	Lean, Crown Lean		Remove	Conflict with proposed development
2670	<i>Fraxinus spp.</i>	Ash	6.6	Dead			Remove</	