

HOME No. 122

\$907⁰⁰

HOME No. 122

For \$907.00 we will furnish the material to build this home, consisting of all lumber, lath, shingles, flooring, finishing lumber, doors, windows, frames, trim, sash weights, building paper, hardware, pipe and gutter, and painting material.

We absolutely guarantee the material we furnish to be sufficient to build the house according to our plans and specifications.

Home No. 122 has an originality and charm all its own, coupled with sane ideas and sound practicability. The slight suggestion of Swiss chalet effect appeals strongly to many, while the square porch, the divided windows, the exposed chimney, the dormer arrangement, and the contrast between the shingles above the belt course and the siding below are features that always please. In many ways this home is an unusual value for the amount invested.

GENERAL SPECIFICATIONS

Built on a brick foundation. Siding carried around porch. Double first floor, with one floor good inch lumber, over which is laid finish floor. Outside walls have sheathing and building paper, sided with clear Cypress siding up to belt course, above which are shingles (see plans). All framing material the best quality Yellow Pine lumber. Extra Star A Star Red Cedar shingles. No. 1 lath. Windows, glazed "A" quality glass. Excellent grade of hardware. Coverall Brand paint, your choice of colors, wood filler and varnish for interior. Read full description of each item in Building Material Catalogue.

By allowing a fair price for labor, brick, cement, and plaster, which we do not furnish, this home can be built for about \$1,925.00.

FIRST FLOOR

Bevel plate door leads into a charming reception hall, with pair of Colonial sash, and a seat at the stair landing. Entering the living room through the cased opening, the big brick fireplace is the center of attraction, set off by single sash on each side. Triple windows in front give an abundance of light. Through another cased opening is the dining room, with triple and double windows. To the right of this room is the kitchen. The kitchen has sink, pantry, basement stairs, and a rear porch. There is also a closet in the entrance way between kitchen and reception hall. An eminently satisfactory first floor arrangement. Yellow Pine trim. Ceilings, 9 feet high.

SECOND FLOOR

Stairway leads into hall, lighted by gable windows. Three good, light bedrooms and bath on this floor, each with closet. Front bedroom especially attractive, on account of the triple windows. Yellow Pine trim. Ceilings, 8 feet 6 inches high, except for slight slope in eaves.

BASEMENT

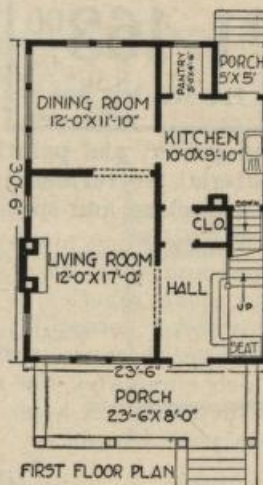
Excavated under entire house. Cement floor. Three-light cellar sash. Seven feet to joists.

Heating and Plumbing

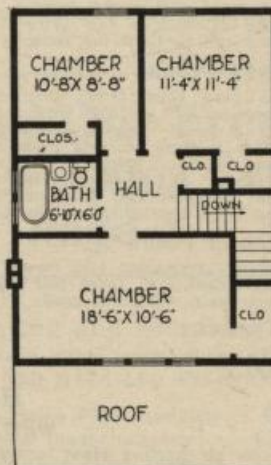
WRITE FOR DETAILED ESTIMATES

Warm Air Heating Plant, complete.....	\$ 80.50
Steam Heating Plant, complete.....	158.00
Hot Water Heating Plant, complete.....	178.00
Plumbing System, complete.....	107.50

The above heating estimates are figured for localities where the temperature does not go below zero. For lower temperatures the prices advance slightly.



Size, Exclusive of Porches:
Width, 23 feet, 6 inches
Length, 30 ft. 6 in.



SECOND FLOOR PLAN

Read Our Free Plan
Offer on Page Two