

# PLAT OF SURVEY

OF  
 LOTS 7, 8, 9 AND 10 IN EDWARD HOSPITAL 2ND RESUBDIVISION, BEING A RESUBDIVISION OF PART OF THE SOUTH 1/2 OF SECTION 24, TOWNSHIP 38 NORTH, RANGE 9, EAST OF THE THIRD PRINCIPAL MERIDIAN, ACCORDING TO THE PLAT THEREOF RECORDED AUGUST 30, 2006 AS DOCUMENT R2006-168022, IN DU PAGE COUNTY, ILLINOIS.  
 COMMONLY KNOWN AS: 801 SOUTH WASHINGTON STREET, NAPERVILLE, ILLINOIS 60540

PIN NOS: 07-24-400.013  
 07-24-400.014  
 07-24-400.015  
 07-24-400.016

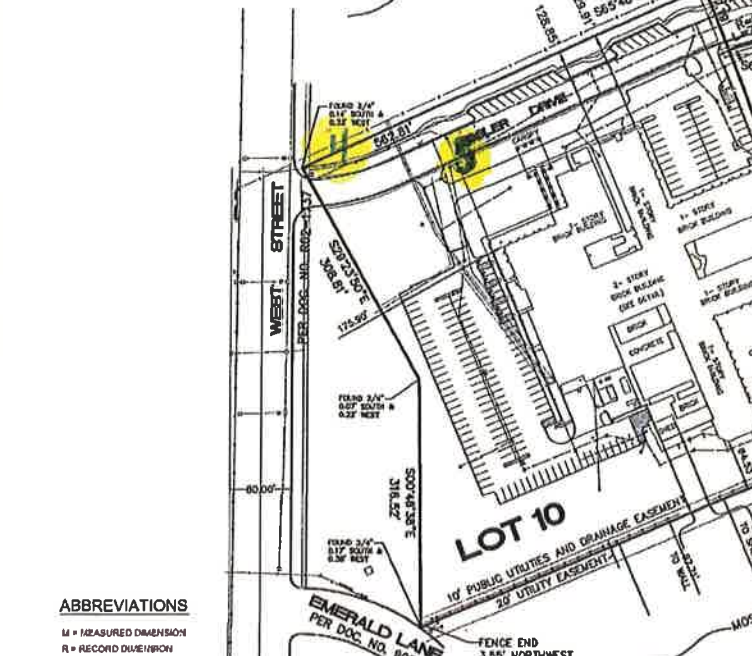
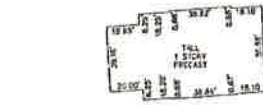
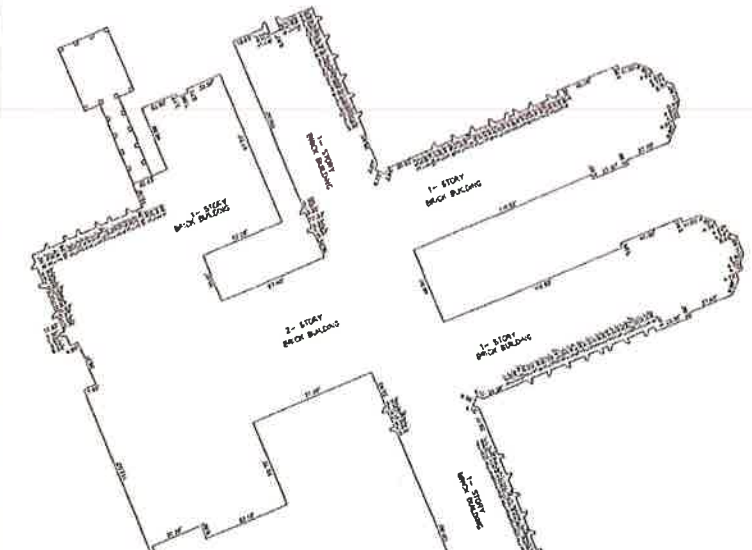
SCALE: 1" =  
 BASIS OF BEARING - ASSUMED

## LEGEND

- DISTINGUISH
- SANITARY SEWER WITH MANHOLE
- WATERMAIN WITH HYDRANT
- STORM SEWER
- OVERHEAD WIRES
- GAS LINE
- ELECTRIC LINE
- CURB INLET
- INLET, TYPE A
- UTILITY MANHOLE
- FENCE POST OR CORNER POST
- STREET LIGHT
- WATER VALVE VAULT
- B-BOX
- CONCRETE WALK
- CURB AND GUTTER
- UTILITY POLE
- GUY WIRE
- OVERHEAD WIRES
- SIGN
- GUARD RAIL
- MAILBOX
- WELL LOCATION
- GAS VALVE
- PEDESTAL

## AREA TABLE

LOT	ROUL	ACRES
7	1,016,866	23.24
8	382,832	8.61
9	360,488	8.24
10	332,035	7.74
<b>TOTAL</b>	<b>2,118,401</b>	<b>48.83</b>



**ABBREVIATIONS**  
 M = MEASURED DIMENSION  
 R = RECORDED DIMENSION

THIS PROFESSIONAL SERVICE CONFORMS TO THE CURRENT ILLINOIS MINIMUM STANDARD FOR A BOUNDARY SURVEY

ORDERED BY: EDWARD HOSPITAL

NOTE: COMPARE ALL POINTS BEFORE BUILDING AND REPORT ANY DIFFERENCE AT ONCE. EASEMENTS AND BUILDING LINES BRACKETED ARE TAKEN FROM ORIGINAL RECORDED SUBDIVISION PLAT FOR SUBSEQUENT EASEMENTS AND BUILDING LINES CHECK, ALTERED, OR NOT DEPICTED UPON RECORDED SURVEY PLAT, REFER TO THIS POLICY, DEED OR INSTRUMENT CREATING SAME.

### NOTES:

- PUBLIC UTILITIES AND DRAINAGE EASEMENTS OVER ALL OF LOTS 7 THROUGH 11 (INCLUSIVE) EXCEPTING THEREFROM, ANY BUILDINGS OR STORMWATER MANAGEMENT EASEMENT AREAS (PER DOCUMENT R2006-168022)
- EASEMENTS SHOWN ON THIS SURVEY, THAT ARE NOT SHOWN ON THE EDWARD HOSPITAL 2ND RESUBDIVISION PLAT, COME FROM AN ALTA SURVEY PREPARED BY INTECH CONSULTANTS, INC. ON OCTOBER 10, 2009. THESE EASEMENTS ARE SHOWN FOR INFORMATION ONLY AND HAVE NOT BEEN VERIFIED BY A CURRENT TITLE COMMITMENT.

### SURVEYOR'S CERTIFICATE

STATE OF ILLINOIS )  
 SS )  
 COUNTY OF DU PAGE )  
 WE, INTECH CONSULTANTS, INC. HEREBY STATE THAT WE HAVE SURVEYED THE ABOVE DESCRIBED PROPERTY AND THE PLAT HEREON DRAWN IS A CORRECT REPRESENTATION OF THE SAME.  
 DATED THIS 13<sup>th</sup> DAY OF June A.D. 2018  
 Mark J. Williams, S.E.  
 ILLINOIS PROFESSIONAL LAND SURVEYOR NO. 35-2587  
 MY LICENSE EXPIRES/RENEWS 11-30-2018



### INTECH CONSULTANTS, INC.

1989 UNIVERSITY LAKE, SUITE D ENGINEERS - SURVEYORS  
 LISLE, ILLINOIS 60552  
 PHONE: 630-984-5650 ILLINOIS REGISTRATION NO. 186-061812

PREPARED: 6-13-18

SHEET No. 1 of 1

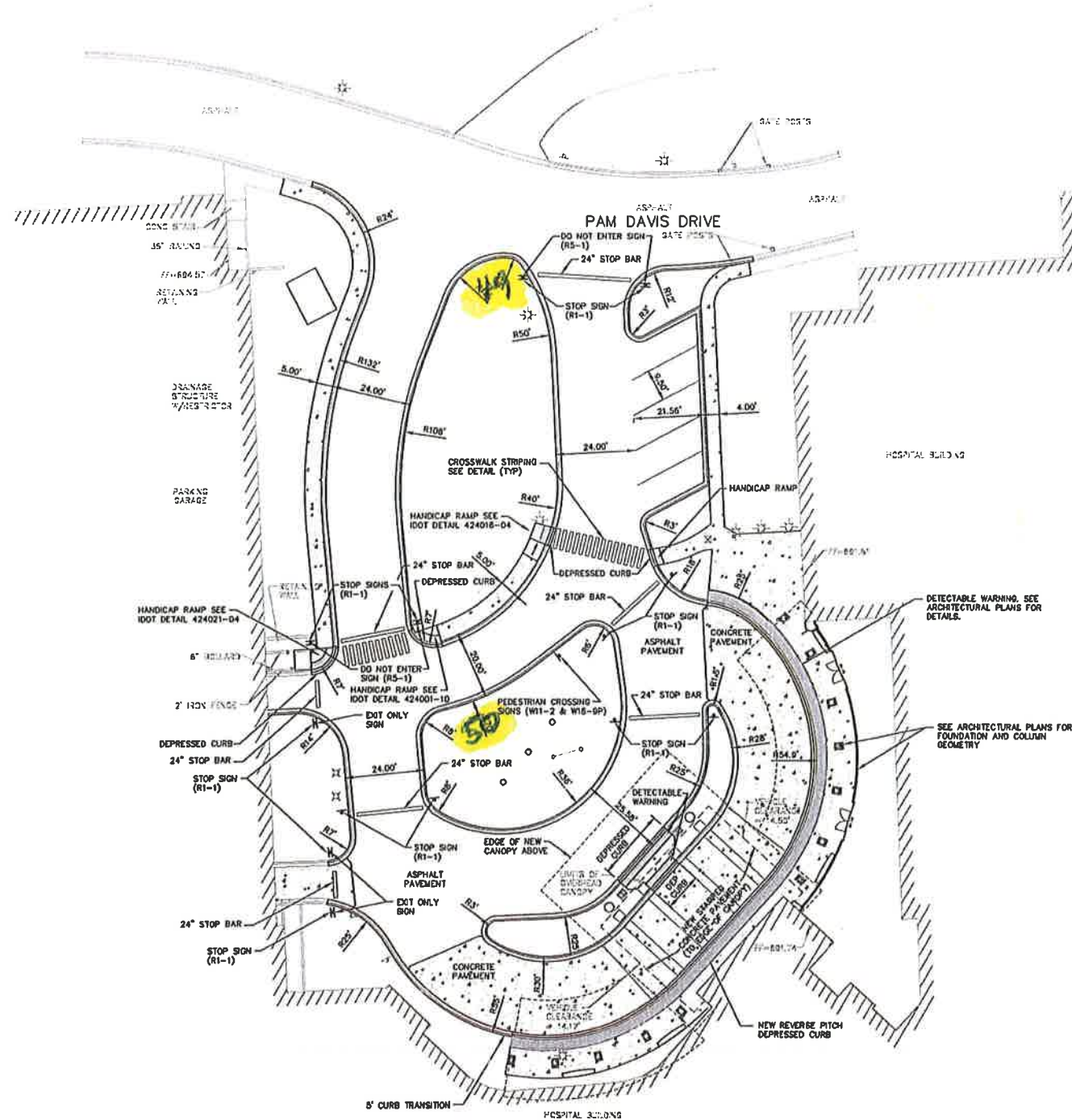
JOB No.: 83036

M:\CAD\Projects\2018\061318\061318.dwg SURVEY, 02/20/18 7:16:54 AM, S.P.



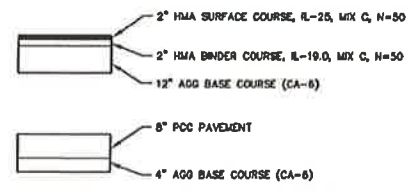
SIGNS 49 AND 50

SCALE: 1" = 20'



- NOTES**
1. ALL DIMENSIONS ARE TO BACK OF CURB UNLESS OTHERWISE NOTED.
  2. SEE ARCHITECTURAL PLANS FOR DETAILS OF CONCRETE PAVEMENT AND PATTERN/COLOR TO BE PROVIDED FOR THE STAMPED CONCRETE PAVEMENT.
  3. STOP BARS AND CROSSWALK STRIPING SHALL BE WHITE PAINT.
  4. ALL CURBING TO BE B-6 12 CURB AND GUTTER UNLESS OTHERWISE NOTED.

**PAVEMENT SECTION**



**INTECH CONSULTANTS, INC.**  
 1989 UNIVERSITY LANE, SUITE D  
 NAPERVILLE, ILLINOIS 60563  
 PHONE: 630-994-9926  
 LICENSE REGISTRATION NO. 164-01000

EDWARD HOSPITAL  
 801 S. WASHINGTON ST.  
 NAPERVILLE, ILLINOIS 60540

EDWARD HOSPITAL  
 NORTH ENTRANCE REVISIONS  
 NAPERVILLE, ILLINOIS

**GEOMETRIC PLAN**

SCALE	1"=20'
DATE	6-25-18
DRAWN	SJP
DESIGNED	EFS
PROJECT NO.	83036EB
SHEET	4 OF 13

REVIEW SET  
 NOT FOR CONSTRUCTION